



**SUNRISE**  **ANGUS**  
*Bull Sale*

**WEDNESDAY APRIL 8 2026**  
*1 pm at Fort Macleod Livestock Auction*



# W SUNRISE BULL SALE

Fort Macleod, AB at Fort Macleod Livestock Auction

WEDNESDAY APRIL 8 2026

*Selling*  
**93**

**BLACK ANGUS** 1-34  
**"PURPLE" BULLS** 35-39  
**RED ANGUS** 40-70  
**SIMMENTALS** 71-93

# welcome from **W SUNRISE**

**I**t is a great privilege to welcome all of you to our annual W Sunrise Bull Sale. Without the great support of you none of this would be possible. All the help from family, friends and neighbors to get to this point in overwhelming, we are truly grateful. It is exciting to work with some of the best commercial and purebred ranches in Canada and the United States. Staying true to what we believe in, we feel this set of bulls represents what we set out to achieve. Easy doing, attractive cattle with the females the biggest focus. No matter what breed we always put the greatest emphasis on the maternal side. We believe now, more then ever, the

importance of the mother cow. As we enter into a new era of high prices and low cattle numbers, that maternal side of the cattle industry is going to play a major role in the rebuild. At W Sunrise our cattle are constantly challenged with weather and environment and not only have to maintain but have to thrive. Each year all efforts are exhausted finding what we feel is the best each breed has to offer for our next walking sire or AI sire, with all focus being on the maternal side of the breed. Once again we have fed our bulls with Bullseye Nutrition, the bulls are fed to express muscle, performance and phenotype with out bring burnt out. New to this year our bulls are fed in large pens where they can move around and get plenty of exercise. Longevity has always been our main focus while feeding and maintaining these bulls. If you get a chance stop by the ranch anytime we would be happy to tour you threw this outstanding set of bulls and we would also be excited to spend a little extra time to show you the exceptional set of cows that raise them. We look forward to seeing everyone at the ranch before the sale or visiting on the phone beforehand and on sale day. Please feel free to reach out anytime with any questions of this exciting offer.

*Sincerely*

*Tanner, Megan, Paige and Quinn*



BOX 1327, CLARESHOLM, AB T0L 0T0  
403.741.5075

BULLS@WSUNRISEANGUS.COM  
WWW.WSUNRISEANGUS.COM

# sale INFORMATION

## Sale Day Contacts

Tanner Walgenbach 403.741.5075  
Megan Walgenbach 403.741.5104

## Bohrson Marketing Services

Scott Bohrson 403.370.3010  
Taylor Richards 306.821.4169  
Darryl Snider 780.385.5561  
Nate Marin 306.869.7130

## Buyer Representatives

Fort Macleod Auction 403.553.3315  
Allen Lively 403.627.7776  
Ryan Konynebelt 403.892.6534

## USA Buyer Representative

Mike Marlow 405.880.0108

## Sale Staff

Dan Skeels, *Auctioneer* 403.783.1217  
Nate Marin, *Ringman* 306.869.7130  
Justin Keeley, *Ringman* 403.627.6534

## Insurance

Jill Wildman 780.305.1146

## Online Bidding

www.DLMS.ca  
Mark Shologan 780.699.5082

## Photography

Jordan Buba 780.818.4047

## Terms & Conditions

**In-herd Semen** W Sunrise retains the right for in herd semen use on all sale bulls. All sale bulls in the catalog are sire verified.

**EPD's** Printed EPD's are the current CCA EPDs at publication time.

**Breeder Guarantee** All bulls have been registered, unless indicated in the catalog, and papers will be transferred to the new owner. All bulls sold are guaranteed to the standard breed association guarantees. In no event shall the seller be responsible for reimbursing more than the purchase price.

**Sight Unseen** We would love to have you with us; however we do understand how busy things can get around the ranch. Our sight unseen program is simple. Call Scott Bohrson or Tanner Walgenbach in advance and we will discuss your needs, cowherd, goals, budget and which bull or bulls work best for you.

**Delivery** FREE DELIVERY to central points near your ranch in Alberta, Saskatchewan and British Columbia. All other points will be cost shared. Delivered at the seller's earliest convenience after arrangements to do so. We will take \$200 off the price of the bulls if taken home sale day. All bulls that are returned to the feedlot will be delivered by April 20 for the convenience of the feedlot.

**Loading Out** Loading will not be allowed until the conclusion of the sale.

**Insurance** All bulls returning to the seller must be insured.

**Liabilities** All persons attend the sale at their own risk. The sellers and/or sales staff assume no liability legal or otherwise, for accidents that occur in, on or about the premises.

**Semen Test** All bulls will be semen tested before sale day.

**Terms** The terms of the sale are cash or cheque. All monies are in Canadian funds. The right of property shall not pass until after settlement has been made. All settlements must be made with the clerk before any cattle will be released.

**Disputes** Every animal sells to the highest bidder and in the case of disputes, the auctioneer's decision will be final. Announcements from the auction block take precedence over the printed matter in the catalog.

**Viewing** Bulls are at home at the ranch, stop by anytime prior to the sale to view bulls and dams. Bulls will be trucked to town on Sunday April 6th where they can be viewed up until sale time.

**Health** Bulls and the entire ranch are on a full herd health program with Zoetis.

## schedule of EVENTS

### Wednesday April 8

**9 AM** Bull Viewing  
Doughnuts & coffee available all day

**1 PM** Sale presented by W Sunrise Angus  
Social with BBQ beef dinner & refreshments to follow





# welcome

from **BOHRSON MARKETING**

**W**elcome to the W Sunrise Angus & Simmental Bull Sale from the Walgenbach family, Tanner, Megan, and their kids. They are truly one of the hardworking, ranch-oriented families we have the privilege of working with. Through dedication and a clear vision, they have assembled an outstanding set of red and black Angus cattle alongside a strong, functional Simmental cowherd.

The Walgenbachs have built trusted relationships with some of the top ranches across North America. Their bulls are proven to work and perform in a wide range of environments and climates, speaking to the consistency and reliability behind their program.

Their cowherd is exactly what today's industry demands – big-bodied, easy fleshing females with excellent feet and strong, functional udders. The bulls on offer reflect that same foundation: muscular, athletic, hairy, and designed with a strong balance of calving ease and performance. This year's offering features an exciting lineup of black, red, and Simmental bulls, backed by both fresh, progressive pedigrees and proven, predictable genetics.

We encourage you to reach out to Tanner and Megan to discuss the program and arrange a time to tour the pens ahead of the sale. We hope you can join us at S.A.L.E in Fort Macleod on April 8th. If you are unable to attend, please don't hesitate to contact the team at Bohrson Marketing – we would be happy to assist you with your next herd bull purchase.

*Best Regards,  
The Bohrson Marketing Team*



Scott Bohrson

Taylor Richards

Martin Bohrson

Rob Voice

Jaxon Payne



Cody Haney

Darryl Snider

Nate Marin

Riley Bohrson





**W SUNRISE LIT UP 79N**

2460985 :: TMP 79N :: FEBRUARY 04 2025

CANADIAN ANGUS ASSOCIATION EPD'S

| Act BW | Adj WW | Adj YW | CE   | BW  | WW | YW  | Milk | MCE | REA |
|--------|--------|--------|------|-----|----|-----|------|-----|-----|
| 90     | 669    | 1233   | -1.0 | 3.8 | 60 | 105 | 28   | 4.5 |     |

BROOKING EMERALD 9179

**RF LIT UP 357**

LFE BA JENNIFER 29J

SOO LINE MOTIVE 9016

**BROOKING ANNIE K 6133**

SOO LINE ANNIE K 2176

Staying true to the maternal side with his highly attractive look, RF Lit Up was a must have for us. One of the most, if not the most, impressive herd bulls I have ever seen. Once the dust settled, he had sold to Duff Cattle for \$190,000 and we were lucky enough to buy the Canadian rights on this impressive herd bull. We are extremely excited to bring this new and exciting sire group. Lot 1 is exactly what we were hoping for from Lit Up, he is perfect in his structure and phenotype and stands on great feet. He is highly attractive with a "look at me" herd bull presence. Not to mention, comes from one of the nicest cows on the ranch. Brooking Annie K is a highly attractive, big middled cow with exceptional foot and utter and a highly productive track record



**SIRE**  
RF LIT UP



**DAM**  
BROOKING ANNIE K 6133



**MATERNAL SISTER**  
570H



**MATERNAL GRANDAM**  
SOO LINE ANNIE K 2176



**PATERNAL GRANDAM**  
LFE BA JENNIFER 29J



**MATERNAL GRANDAM**  
W SUNRISE BLOSSOM 723E



**W SUNRISE LIT UP 118N**  
2460994 :: TMP 118N :: FEBRUARY 09 2025

CANADIAN ANGUS ASSOCIATION EPD'S

| Act BW | Adj WW | Adj YW | CE  | BW  | WW | YW  | Milk | MCE | REA |
|--------|--------|--------|-----|-----|----|-----|------|-----|-----|
| 88     | 659    | 1341   | 4.0 | 2.2 | 67 | 118 | 25   | 7.5 |     |

- BROOKING EMERALD 9179
- RF LIT UP 357**
- LFE BA JENNIFER 29J
- U2 COALITION 265G
- W SUNRISE BLOSSOM 57J**
- W SUNRISE BLOSSOM 732E

Here is a big time herd bull that we are really excited about for many reasons. He is stout hipped, soft made and extremely attractive in his profile. The maternal side of this exciting herd bull doesn't get any more special, his dam 57J is a daughter to the 732E harvester cow which is one of the most gorgeous cows on the ranch. She is sharp fronted, beautiful uttered and extremely sound made. With the great cows in this young bulls pedigree combined with Lit Up makes for a bright and predictable future



**W SUNRISE LIT UP 40N**  
2460970 :: TMP 40N :: FEBRUARY 02 2025

CANADIAN ANGUS ASSOCIATION EPD'S

| Act BW | Adj WW | Adj YW | CE  | BW  | WW | YW | Milk | MCE | REA |
|--------|--------|--------|-----|-----|----|----|------|-----|-----|
| 87     | 747    | 1347   | 3.0 | 2.3 | 55 | 97 | 28   | 8.5 |     |

- BROOKING EMERALD 9179
- RF LIT UP 357**
- LFE BA JENNIFER 29J
- ELLINGSON HOMEGROWN 8053
- W SUNRISE ROSEBUD 69J**
- HF ROSEBUD 268D

All these bulls are stamped much like there great sire Lit Up, sharp fronted, have lots of eye appeal and move extremely sound. 40N is one of our favorites from this group, he exemplifies these traits to a t, and is one of the first bulls to be found in the pen by every visitor. He is backed by the HF Rosebud cow family, out of a Ellingson Homegrown daughter. This bull is loaded up with real world maternal traits





**W SUNRISE LIT UP 133N**

2461005 :: TMP 133N :: FEBRUARY 14 2025

CANADIAN ANGUS ASSOCIATION EPD'S

| Act BW | Adj WW | Adj YW | CE   | BW  | WW | YW  | Milk | MCE | REA |
|--------|--------|--------|------|-----|----|-----|------|-----|-----|
| 97     | 775    | 1505   | -1.5 | 3.8 | 69 | 117 | 26   | 5.5 |     |

BROOKING EMERALD 9179 | PLEASANT VALLEY LUTE 1207  
**RF LIT UP 357** | **W SUNRISE TIBBIE 66J**  
 LFE BA JENNIFER 29J | W SUNRISE TIBBIE 220G

Here is a big time performance bull, wrapped up in a highly maternal package. Its rare to achieve this much muscle mass, masculinity and attractiveness and still hold a maternal line. His dam is an exceptional uttered Lute daughter that goes back to our HF 211D cow. 211D had been an extremely productive cow with a predictable track record, she still stands here on perfect feet and gorgeous udder to this day



**W SUNRISE LIT UP 67N**

2460981 :: TMP 67N :: FEBRUARY 04 2025

CANADIAN ANGUS ASSOCIATION EPD'S

| Act BW | Adj WW | Adj YW | CE   | BW  | WW | YW | Milk | MCE | REA |
|--------|--------|--------|------|-----|----|----|------|-----|-----|
| 83     | 753    | 1341   | -1.5 | 3.9 | 57 | 96 | 27   | 7.5 |     |

BROOKING EMERALD 9179 | HF ELECTRIC AVENUE 196D  
**RF LIT UP 357** | **W SUNRISE ENCHANTRESS 90J**  
 LFE BA JENNIFER 29J | BAR-E-L ENCHANTRESS 119A

Here is a bull that always catches your attention, he is big, stout, attractive and commands a big time herd bull presence. He is a bull that will not be missed in the bull pen this year. His maternal granddam 119A came out of one of the best cow herds in Canada, Bar E-L. She is super footed and gorgeous uddered.





**W SUNRISE LIT UP 51N**

2460976 :: TMP 51N :: FEBRUARY 02 2025

CANADIAN ANGUS ASSOCIATION EPD'S

| Act BW | Adj WW | Adj YW | CE   | BW  | WW | YW  | Milk | MCE | REA |
|--------|--------|--------|------|-----|----|-----|------|-----|-----|
| 89     | 683    | 1247   | -2.0 | 3.7 | 58 | 104 | 28   | 5.5 |     |

BROOKING EMERALD 9179 | HF DEFENDER 146B  
**RF LIT UP 357** | **HF TIBBIE 211D**  
 LFE BA JENNIFER 29J | HF TIBBIE 69A

If you want to make some exceptional females, here is your herd bull. 51N is long, thick and stylish with an unmistakable herd bull presence. Is super sleek in his front third and moves effortlessly. Not to mention, he is the direct son out of the great HF 211D cow.



**W SUNRISE LIT UP 90N**

2460990 :: TMP 90N :: FEBRUARY 05 2025

CANADIAN ANGUS ASSOCIATION EPD'S

| Act BW | Adj WW | Adj YW | CE  | BW  | WW | YW | Milk | MCE | REA |
|--------|--------|--------|-----|-----|----|----|------|-----|-----|
| 80     | 730    | 1307   | 4.0 | 2.1 | 56 | 98 | 25   | 7.5 |     |

BROOKING EMERALD 9179 | HF SYNDICATE 213Z  
**RF LIT UP 357** | **HF ECHO 225D**  
 LFE BA JENNIFER 29J | HF ECHO 269B

True to this impressive sire group, this Lit up son has a very attractive side profile with a soft easy doing look to him. Stands on exceptional feet and is backed by a highly productive, HF Syndicate daughter. The Syndicate females are held in high regard s here, for being extremely sound, attractive cattle with gorgeous utters.



**W SUNRISE LIT UP 144N**

2461006 :: TMP 144N :: FEBRUARY 20 2025

CANADIAN ANGUS ASSOCIATION EPD'S

| Act BW | Adj WW | Adj YW | CE   | BW  | WW | YW  | Milk | MCE | REA |
|--------|--------|--------|------|-----|----|-----|------|-----|-----|
| 95     | 711    | 1211   | -1.5 | 4.0 | 61 | 104 | 22   | 5.5 |     |

BROOKING EMERALD 9179 | PLEASANT VALLEY LUTE 1207  
**RF LIT UP 357** | **HF TIBBIE 252D**  
 LFE BA JENNIFER 29J | HF TIBBIE 23Y

HF Tibbie 252D has been extraordinary cow for us, the Tibbie cow family is held in high regards here. 144N is chalked full of real world traits in a highly attractive profile. The consistency of this sire group of Lit Up sons is hard to achieve





**W SUNRISE LIT UP 124N**

2460996 :: TMP 124N :: FEBRUARY 14 2025

CANADIAN ANGUS ASSOCIATION EPD'S

| Act BW | Adj WW | Adj YW | CE  | BW  | WW | YW  | Milk | MCE | REA |
|--------|--------|--------|-----|-----|----|-----|------|-----|-----|
| 77     | 654    | 1218   | 0.5 | 3.1 | 60 | 104 | 22   | 6.5 |     |

BROOKING EMERALD 9179

SSS DEUCE 2H

**RF LIT UP 357**

**W SUNRISE ROSEBUD CUB 912K**

LFE BA JENNIFER 29J

W SUNRISE ROSEBUD CUB 23F

124N has all the shape and performance while maintaining a low birth number. Super smooth made with a true angus head and foot structure. A calf that can get his head up on the move and profiles extremely nice.



**W SUNRISE LIT UP 48N**

2460973 :: TMP 48N :: FEBRUARY 02 2025

CANADIAN ANGUS ASSOCIATION EPD'S

| Act BW | Adj WW | Adj YW | CE   | BW  | WW | YW  | Milk | MCE | REA |
|--------|--------|--------|------|-----|----|-----|------|-----|-----|
| 86     | 701    | 1360   | -0.5 | 3.2 | 63 | 108 | 24   | 6.0 |     |

BROOKING EMERALD 9179

BROOKING BLUE FIRE 9316

**RF LIT UP 357**

**W SUNRISE ECHO 919K**

LFE BA JENNIFER 29J

HF ECHO 220D

Here is a big time herd bull with an absolute stacked pedigree. Cows like Brooking Annie K, HF 220D are just some of the great cow families in this exciting herd bulls pedigree. One of our pen favorites from this sire group for his attractive profile and flawless phenotype. His granddam HF 220D is an absolute sweet heart of a cow with a perfect utter and true angus look.



**W SUNRISE LIT UP 168N**

2461010 :: TMP 168N :: FEBRUARY 27 2025

CANADIAN ANGUS ASSOCIATION EPD'S

| Act BW | Adj WW | Adj YW | CE   | BW  | WW | YW  | Milk | MCE | REA |
|--------|--------|--------|------|-----|----|-----|------|-----|-----|
| 89     | 778    | 1343   | -1.0 | 3.7 | 60 | 100 | 23   | 5.5 |     |

BROOKING EMERALD 9179

ANCHORAGE YOUNGBLOOD 9235

**RF LIT UP 357**

**W SUNRISE BLACKBIRD EVE 189J**

LFE BA JENNIFER 29J

W SUNRISE BLACKBIRD EVE 318G

A real complete made, performance driven herd bull with extra length of body, exceptional hair and good feet. An easy doing, functional herd bull with lots of eye appeal. His great granddam 29X was one of the original Brown Creek cows we purchased when we started, she was an exceptional cow with a great production record.



**W SUNRISE LIT UP 17N**

2460968 :: TMP 17N :: FEBRUARY 01 2025

CANADIAN ANGUS ASSOCIATION EPD'S

| Act BW | Adj WW | Adj YW | CE   | BW  | WW | YW  | Milk | MCE | REA |
|--------|--------|--------|------|-----|----|-----|------|-----|-----|
| 86     | 785    | 1350   | -0.5 | 3.0 | 63 | 110 | 26   | 6.5 |     |

BROOKING EMERALD 9179 | W SUNRISE EXECUTIVE LAW 507H  
**RF LIT UP 357** | **W SUNRISE JOCELYN 712K**  
 LFE BA JENNIFER 29J | W SUNRISE JOCELYN 9F

17N is the type and kind we are trying to raise, highly attractive cattle with extra look and style that are maternally driven. This young herd bull has an ideal angus head, good footed and is backed by an exceptional Executive Law daughter.



**W SUNRISE LIT UP 146N**

2461008 :: TMP 146N :: FEBRUARY 20 2025

CANADIAN ANGUS ASSOCIATION EPD'S

| Act BW | Adj WW | Adj YW | CE  | BW  | WW | YW  | Milk | MCE | REA |
|--------|--------|--------|-----|-----|----|-----|------|-----|-----|
| 88     | 723    | 1323   | 3.5 | 2.4 | 56 | 101 | 26   | 8.5 |     |

BROOKING EMERALD 9179 | SSS DEUCE 2H  
**RF LIT UP 357** | **W SUNRISE BUD CUB 727K**  
 LFE BA JENNIFER 29J | W SUNRISE ROSE BUD CUB 334G

Soft made Lit Up son with tons of muscle expression with added stretch and growth. His maternal granddam the 780E cow has undoubtedly one of the best bulls in the sale again this year. Backed by a hard working SSS Deuce daughter.



**W SUNRISE LIT UP 72N**

2460983 :: TMP 72N :: FEBRUARY 04 2025

CANADIAN ANGUS ASSOCIATION EPD'S

| Act BW | Adj WW | Adj YW | CE   | BW  | WW | YW  | Milk | MCE | REA |
|--------|--------|--------|------|-----|----|-----|------|-----|-----|
| 85     | 688    | 1276   | -0.5 | 2.9 | 64 | 108 | 25   | 3.0 |     |

BROOKING EMERALD 9179 | S TITILEST 1145  
**RF LIT UP 357** | **W SUNRISE NEONIA 403D**  
 LFE BA JENNIFER 29J | REMITALL WEST NEONIA 42B

Wide and massive with a cool herd bull look. A high performance bull built to last, backed by an outstanding outcrossed cow.





**W SUNRISE LIT UP 18N**

2460969 :: TMP 18N :: FEBRUARY 01 2025

CANADIAN ANGUS ASSOCIATION EPD'S

| Act BW | Adj WW | Adj YW | CE  | BW  | WW | YW  | Milk | MCE | REA |
|--------|--------|--------|-----|-----|----|-----|------|-----|-----|
| 72     | 698    | 1180   | 5.5 | 1.4 | 57 | 100 | 26   | 9.5 |     |

BROOKING EMERALD 9179

SSS DEUCE 2H

**RF LIT UP 357**

**W SUNRISE ROSE BUD CUB 718K**

LFE BA JENNIFER 29J

W SUNRISE ROSE BUD CUB 527H

A highly attractive, clean fronted, long spined easy doing herd bull. With a couple of great cows here at W Sunrise in his pedigree.



**W SUNRISE OAKLAND 195N**

2444694 :: TMP 195N :: MARCH 12 2025

CANADIAN ANGUS ASSOCIATION EPD'S

| Act BW | Adj WW | Adj YW | CE  | BW  | WW | YW  | Milk | MCE | REA |
|--------|--------|--------|-----|-----|----|-----|------|-----|-----|
| 72     | 748    | 1242   | 9.0 | 0.9 | 63 | 113 | 24   | 9.0 |     |

COLEMAN TRIUMPH 9145

SSS DEUCE 2H

**RIVERFRONT OAKLAND 330L**

**W SUNRISE BLOSSOM 234L**

RIVERFRONT ANNIE K 119J

W SUNRISE BLOSSOM 57J

These next two calving ease herd sires are the result of a really special bull we purchased from Riverfront Angus in 2024. Oakland was purchased for many reasons but maybe the most influential part was his dam. The Annie K 119 cow was an absolutely outstanding cow. 195N is defiantly a sale feature calving ease bull, extremely attractive, backed by some of the most maternal cows on both sides of his pedigree



**W SUNRISE OAKLAND 161N**

2442126 :: TMP 161N :: FEBRUARY 27 2025

CANADIAN ANGUS ASSOCIATION EPD'S

| Act BW | Adj WW | Adj YW | CE  | BW  | WW | YW  | Milk | MCE | REA |
|--------|--------|--------|-----|-----|----|-----|------|-----|-----|
| 77     | 727    | 1198   | 6.0 | 1.4 | 60 | 106 | 22   | 9.0 |     |

COLEMAN TRIUMPH 9145

SSS DEUCE 2H

**RIVERFRONT OAKLAND 330L**

**W SUNRISE JOCELYN 249L**

RIVERFRONT ANNIE K 119J

W SUNRISE JOCELYN 9F

161N is a heifer bull specialist. Smooth made, nice skulled, with a herd bull presence. These Oakland calves will calve heifers and also leave behind a set of daughters.



**W SUNRISE JUDGEMENT 6N**

2437459 :: TMP 6N :: FEBRUARY 01 2025

CANADIAN ANGUS ASSOCIATION EPD'S

| Act | Adj | Adj  |     |     |    |     |      |     |     |  |
|-----|-----|------|-----|-----|----|-----|------|-----|-----|--|
| BW  | WW  | YW   | CE  | BW  | WW | YW  | Milk | MCE | REA |  |
| 87  | 791 | 1362 | 2.0 | 2.9 | 64 | 110 | 28   | 6.0 |     |  |

- SQUARE B ATLANTIS 8060
- MONTANA JUDGEMENT 1038**
- MILL BRAE FP JOANIE 3063
- BROOKING BLACK INK 4019
- W SUNRISE ROSE BUD CUB 780E**
- LINDON ROSE BUD CUB 12B

Definitely a sale feature this year, a favorite choice of many. 6N has stood out since an early age alongside his beautiful uttered dam who has been absolutely outstanding here. These Montana Judgement sons possess a lot of the characteristics we are trying to achieve at W Sunrise. They are up headed, nice skulled, attractive, hairy, big middled bulls with a flawless phenotype. 6N is backed by some of the nicest cows on both side of the border. The Montana Judgement sire group this year is defiantly one we are excited about for many reasons. The exemplify as much performance, mass and masculinity while still maintaining a highly maternal line. They are sound made, free moving, real world cattle.



**SIRE**  
MONTANA JUDGEMENT 1038



**DAM OF SIRE**  
MILL BRAE FP JOANIE 3063



**MATERNAL BROTHER**  
TMP 4J



**MATERNAL GRANDDAM**  
BROOKING QUEEN 5067



**W SUNRISE JUDGEMENT 28N**

2437694 :: TMP 28N :: FEBRUARY 02 2025

CANADIAN ANGUS ASSOCIATION EPD'S

| Act BW | Adj WW | Adj YW | CE  | BW  | WW | YW | Milk | MCE | REA |
|--------|--------|--------|-----|-----|----|----|------|-----|-----|
| 89     | 707    | 1383   | 3.0 | 3.0 | 52 | 95 | 25   | 6.0 |     |

SQUARE B ATLANTIS 8060

PM EXECUTIVE DECISION 5'17

**MONTANA JUDGEMENT 1038**

**W SUNRISE QUEEN 697H**

MILL BRAE FP JOANIE 3063

BROOKING QUEEN 5067

Here is a big time herd bull with a bright future. One of our favorite bulls for many reasons. Has an absolutely stacked pedigree with exceptional females with proven track records. His mom is a maternal sister to the \$115,000 W Sunrise 4J that went to good folks at Rideau Angus Farm. Montana Judgement mixed with the Queen cow family will make for a very exciting cross. The females left as a result of this will leave a lasting impression in your herd.



**W SUNRISE JUDGEMENT 56N**

2437730 :: TMP 56N :: FEBRUARY 02 2025

CANADIAN ANGUS ASSOCIATION EPD'S

| Act BW | Adj WW | Adj YW | CE  | BW  | WW | YW | Milk | MCE | REA  |
|--------|--------|--------|-----|-----|----|----|------|-----|------|
| 92     | 683    | 1271   | 2.0 | 3.3 | 46 | 80 | 26   | 6.0 | 0.47 |

SQUARE B ATLANTIS 8060

HF G-MAN 29B

**MONTANA JUDGEMENT 1038**

**HF BLOSSOM 30D**

MILL BRAE FP JOANIE 3063

HF BLOSSOM 5W

56N is a herd bull that you always gravitate to in the pen. He is up headed, attractive made with an impressive herd bull presence. He has had these characteristics since a young age. His dam HF 30D is one of the hardest working, no miss cows on the ranch. She is very moderate with a beautiful utter and never disappoints.





**W SUNRISE JUDGEMENT 41N**

2437713 :: TMP 41N :: FEBRUARY 02 2025

CANADIAN ANGUS ASSOCIATION EPD'S

| Act BW | Adj WW | Adj YW | CE  | BW  | WW | YW | Milk | MCE  | REA |
|--------|--------|--------|-----|-----|----|----|------|------|-----|
| 70     | 727    | 1327   | 9.0 | 0.6 | 50 | 90 | 25   | 10.0 |     |

SQUARE B ATLANTIS 8060

**MONTANA JUDGEMENT 1038**

MILL BRAE FP JOANIE 3063

SSS DEUCE 2H

**W SUNRISE ROSEBUD 228L**

W SUNRISE ROSEBUD 69J

41N has been a standout all summer. He has had a herd bull look from a very early age. He exhibits a rare combination of attractiveness and power while maintaining a soft easy doing look. He has shown expressive amount of growth from his modest 70lb birth weight to his big weaning and yearling weight and holding it all together with a flawless phenotype



**W SUNRISE JUDGEMENT 97N**

2438461 :: TMP 97N :: FEBRUARY 07 2025

CANADIAN ANGUS ASSOCIATION EPD'S

| Act BW | Act WW | Adj YW | CE  | BW  | WW | YW | Milk | MCE | REA |
|--------|--------|--------|-----|-----|----|----|------|-----|-----|
| 79     | 721    | 1180   | 5.0 | 2.4 | 54 | 97 | 22   | 8.0 |     |

SQUARE B ATLANTIS 8060

**MONTANA JUDGEMENT 1038**

MILL BRAE FP JOANIE 3063

SSS DEUCE 2H

**W SUNRISE STIMULATOR 297L**

BROWN CREEK STIMULATOR 10D

Here is a bull that always catches your attention, he is big, stout, attractive and commands a big time herd bull presence. He is a bull that will not be missed in the bull pen this year. His maternal granddam 119A came out of one of the best cow herds in Canada, Bar E-L. She is super footed and gorgeous uddered.





**W SUNRISE INCENTIVE 33N**

2456894 :: TMP 33N :: FEBRUARY 02 2025

CANADIAN ANGUS ASSOCIATION EPD'S

| Act BW | Adj WW | Adj YW | CE  | BW  | WW | YW  | Milk | MCE | REA |
|--------|--------|--------|-----|-----|----|-----|------|-----|-----|
| 72     | 795    | 1454   | 4.0 | 1.3 | 65 | 122 | 7.0  | 27  |     |

SITZ INCENTIVE 704H    W SUNRISE EXECUTIVE 4J  
**KR INCENTIVE 3052**    **W SUNRISE ANNIE K 355L**  
 KR MISS BELL 8036    BROOKING ANNIE K 5106

Here is an exciting new outcross calving ease sire group. We have been excited about these calves ever since the first one was born. The KR Incentive calves come easy and grow like crazy. They have as much performance, shape and style as any heifer bull we have ever used. They are sound made and highly maternal, and offer a different twist in pedigree to any program in Canada. We were lucky enough to obtain a semen pack from our good friends at Golden Oaks and we couldn't be more pleased with the first calf crop. Not to mention the best part about this new outcross sire is not only can he make outstanding bulls but the females are looking to be exceptional. 33N is an Incentive calf that is royally bred here. Backed by the cherished Annie K cow family, this young herd bull offers a unique maternal package. He has an exciting herd bull presence with true angus characteristics. His maternal granddam Brooking Annie K 5106 has been an exceptional donor dam with a highly predictable performance record.



**SIRE**  
KR INCENTIVE 3052



**W SUNRISE INCENTIVE 26N**

2456889 :: TMP 26N :: FEBRUARY 02 2025

CANADIAN ANGUS ASSOCIATION EPD'S

| Act BW | Adj WW | Adj YW | CE  | BW  | WW | YW  | Milk | MCE  | REA |
|--------|--------|--------|-----|-----|----|-----|------|------|-----|
| 78     | 737    | 1349   | 6.0 | 2.3 | 63 | 116 | 22   | 11.0 |     |

SITZ INCENTIVE 704H

**KR INCENTIVE 3052**

KR MISS BELL 8036

SSS DEUCE 2H

**W SUNRISE MARG 365L**

W SUNRISE MARG 627H

These exciting Incentive sons possess a lot of the same characteristics as their sire. Here is a calving ease specialist that is up headed, nice skulled with an attractive phenotype. He is a powerful made calving ease bull with lots of maternal value going back to the Marg cow family from Bar -E-L



**W SUNRISE INCENTIVE 32N**

2456892 :: TMP 32N :: FEBRUARY 02 2025

CANADIAN ANGUS ASSOCIATION EPD'S

| Act BW | Adj WW | Adj YW | CE  | BW  | WW | YW  | Milk | MCE  | REA |
|--------|--------|--------|-----|-----|----|-----|------|------|-----|
| 76     | 737    | 1278   | 7.0 | 1.6 | 61 | 116 | 23   | 11.0 |     |

SITZ INCENTIVE 704H

**KR INCENTIVE 3052**

KR MISS BELL 8036

SSS DEUCE 2H

**W SUNRISE ECHO 326L**

W SUNRISE ECHO 607H

Here is an exciting sale feature backed by some of the most beautiful uttered females on the entire ranch. His dam, granddam and great granddam are model angus cows with gorgeous utters. To be able to have calving ease, maternal with performance and style is sometimes hard to achieve. Here is a big time herd bull with all the tools.





**W SUNRISE INCENTIVE 54N**

2456900 :: TMP 54N :: FEBRUARY 02 2025

CANADIAN ANGUS ASSOCIATION EPD'S

| Act BW | Act WW | Adj YW | CE  | BW  | WW | YW  | Milk | MCE  | REA |
|--------|--------|--------|-----|-----|----|-----|------|------|-----|
| 82     | 659    | 1283   | 4.0 | 2.7 | 56 | 109 | 21   | 11.0 |     |

SITZ INCENTIVE 704H | SSS DEUCE 2H  
**KR INCENTIVE 3052** | **W SUNRISE BEAUTY 401L**  
 KR MISS BELL 8036 | RUST U R A BEAUTY 7229E

We really admire the type and kind of the KR Incentive calves. Here is a neat made, calving ease herd sire with a attractive head and side profile. He is backed by the highly maternal Beauty cow family



**W SUNRISE INCENTIVE 11N**

2456883 :: TMP 11N :: FEBRUARY 01 2025

CANADIAN ANGUS ASSOCIATION EPD'S

| Act BW | Adj WW | Adj YW | CE  | BW  | WW | YW  | Milk | MCE  | REA |
|--------|--------|--------|-----|-----|----|-----|------|------|-----|
| 75     | 632    | 1227   | 6.0 | 1.6 | 52 | 102 | 22   | 10.0 |     |

SITZ INCENTIVE 704H | W SUNRISE EXECUTIVE 4J  
**KR INCENTIVE 3052** | **W SUNRISE LADY 211L**  
 KR MISS BELL 8036 | BAR-E-L LADY 139C

You cannot help but admire his strong head character, masculinity, muscular hip and smooth moving, wrapping up in an exciting calving ease herd sire. He balances as much performance and phenotype as any heifer bull in the offering. Also stemming back from the great Bar - E - L program on the bottom side.





**W SUNRISE INCENTIVE 55N**

2456902 :: TMP 55N :: FEBRUARY 02 2025

CANADIAN ANGUS ASSOCIATION EPD'S

| Act BW | Adj WW | Adj YW | CE   | BW   | WW | YW  | Milk | MCE  | REA |
|--------|--------|--------|------|------|----|-----|------|------|-----|
| 70     | 737    | 1301   | 11.0 | -0.2 | 54 | 104 | 25   | 12.0 |     |

SITZ INCENTIVE 704H | SSS DEUCE 2H  
**KR INCENTIVE 3052** | **W SUNRISE MOLLY 229L**  
 KR MISS BELL 8036 | W SUNRISE MOLLY 167J

Here is a calving ease specialist that exhibits desirable traits such as, length, clean lines and attractiveness in his front and head. A calf that can really get out and move and is extremely sound in his makeup.



**W SUNRISE INCENTIVE 68N**

APPLIED FOR :: TMP 68N :: FEBRUARY 04 2025

CANADIAN ANGUS ASSOCIATION EPD'S

| Act BW | Act WW | Act YW | CE  | BW  | WW | YW  | Milk | MCE  | REA |
|--------|--------|--------|-----|-----|----|-----|------|------|-----|
| 78     | 850    | 1330   | 5.0 | 2.0 | 69 | 125 | 22   | 10.0 |     |

SITZ INCENTIVE 704H | SSS DEUCE 2H  
**KR INCENTIVE 3052** | **W SUNRISE TIBBIE 418L**  
 KR MISS BELL 8036 | W SUNRISE TIBBIE 333G

Here is a bull that you naturally gravitate to in the pen, for his overall performance and presence while still maintaining a calving ease package. He is massive rib shaped with plenty of muscle and masculinity and is extremely sounds and stands on good feet.



**W SUNRISE INCENTIVE 19N**

2456886 :: TMP 19N :: FEBRUARY 01 2025

CANADIAN ANGUS ASSOCIATION EPD'S

| Act BW | Adj WW | Adj YW | CE  | BW  | WW | YW  | Milk | MCE  | REA |
|--------|--------|--------|-----|-----|----|-----|------|------|-----|
| 76     | 705    | 1211   | 7.0 | 1.7 | 58 | 108 | 24   | 11.0 |     |

SITZ INCENTIVE 704H | SSS DEUCE 2H  
**KR INCENTIVE 3052** | **W SUNRISE QUEENIE 245L**  
 KR MISS BELL 8036 | HF QUEENIE 303D

KR Incentive has done a tremendous job. They calve easy, grow fast and have a stylish look. They are the type of cattle that will never go out of style. Here is a bull that can be used on heifers and later on be used on cows.





**W SUNRISE RADVILLE 325N**

APPLIED FOR :: TMP 325N :: FEBRUARY 14 2025

CANADIAN ANGUS ASSOCIATION EPD'S (PE)

| Act BW | Act WW | Act YW | CE  | BW  | WW | YW  | Milk | MCE | REA |
|--------|--------|--------|-----|-----|----|-----|------|-----|-----|
| 82     | 770    | 1400   | 1.5 | 3.9 | 68 | 107 | 28.5 | 7.5 |     |

S A V BISMARCK 5682    S A F 598 BANDO 5175  
**BROOKING RADVILLE 2208**    **S A V EMBLYNETTE 3325**  
 BROOKING BEAUTY 333    S A V EMBLYNETTE 7319

A big-time calving ease herd bull, that has an absolutely stacked maternal pedigree. 325N is an exciting herd bull that can't be missed in the pen, he has an amazing "come look at me" presence and a flawless phenotype. He exemplifies true angus characteristics while carrying a big-time herd bull look. The females in this extraordinary bulls pedigree are unmatched in the industry for looks and production. His sire Brooking Radville has sired some of the top selling females in Canada. Not only can he sire big time bulls he can make an exceptional female. These qualities are hard to find in a herd bull.



**SIRE**  
BROOKING RADVILLE 2208



**PATERNAL GRANDAM**  
BROOKING BEAUTY 333



**DAM**  
S A V EMBLYNETTE 3325





**W SUNRISE FOUNDATION 186N**

2443889 :: TMP 186N :: MARCH 07 2025

CANADIAN ANGUS ASSOCIATION EPD'S

| Act BW | Adj WW | Adj YW | CE   | BW   | WW | YW | Milk | MCE  | REA |
|--------|--------|--------|------|------|----|----|------|------|-----|
| 60     | 675    | 1287   | 12.0 | -2.6 | 46 | 80 | 24   | 11.0 |     |

BROOKING EMERALD 9179

WILBAR EXECUTIVE DECISION 520G

**BROOKING FOUNDATION 2078**

**W SUNRISE KURUBA 169J**

FLAG ABIGAIL 10671

RED W SUNRISE KURUBA 265G

Here is a calving ease herd bull that you will admire for his quality phenotype, straight lines and small angus head. An extremely attractive Foundation son with a highly maternal pedigree. The Emerald derivatives are leading the way for looks, functionality and production.





**W SUNRISE INCENTIVE 70N**

APPLIED FOR :: TMP 70N :: FEBRUARY 1 2025

CANADIAN ANGUS ASSOCIATION EPD'S (PE)

| Act BW | Act WW | Adj YW | CE  | BW  | WW | YW  | Milk | MCE  | REA |
|--------|--------|--------|-----|-----|----|-----|------|------|-----|
| 85     | 630    | 1280   | 6.0 | 2.0 | 58 | 111 | 24   | 10.5 |     |

SITZ INCENTIVE 704H | SSS DEUCE 2H  
**KR INCENTIVE 3052** | **W SUNRISE EXQUISITE LADY 325L**  
 KR MISS BELL 8036 | W SUNRISE EXQUISITE LADY 572H

70N is an incredible, stylish, up headed herd bull with an unmistakable presence. He is a bull that has been admired all summer long, along side his beautiful uttered 2-year-old dam. He is one that everyone finds in the bull pen.



**W SUNRISE INCENTIVE 237N**

APPLIED FOR :: TMP 237N :: MARCH 23 2025

CANADIAN ANGUS ASSOCIATION EPD'S (PE)

| Act BW | Adj WW | Adj YW | CE  | BW  | WW | YW  | Milk | MCE | REA |
|--------|--------|--------|-----|-----|----|-----|------|-----|-----|
| 85     | 700    | 1300   | 4.0 | 2.0 | 60 | 111 | 25   | 9.0 |     |

SITZ INCENTIVE 704H | ELLINGSON STETSON  
**KR INCENTIVE 3052** | **W SUNRISE TIBBIE 597H**  
 KR MISS BELL 8036 | HF TIBBIE 16D

An impressive performance bull with size, volume and dimension, clean fronted with an eye catching profile. With an attractive beautiful Ellingson Stetson Dam behind him, makes him a unique piece for building a cow herd.





**DAM**  
RED MOOSE CREEK BRNDINA 26E



**MATERNAL BROTHER**  
TMP 409L



**W SUNRISE LIT UP 267N**

APPLIED FOR :: TMP 267N :: FEBRUARY 24 2025

CANADIAN ANGUS ASSOCIATION EPD'S (PE)

| Act BW | Act WW | Act YW | CE  | BW  | WW | YW | Milk | MCE | REA |
|--------|--------|--------|-----|-----|----|----|------|-----|-----|
| 93     | 760    | 1250   | 0.0 | 2.7 | 51 | 94 | 29   | 7.0 |     |

- BROOKING EMERALD 9179
- RF LIT UP 357**
- LFE BA JENNIFER 29J
- RED SVR GANGSTER 44X
- RED MOOSE CREEK BRNDINA 26E**
- RED BWA BRNDINA 15X



**W SUNRISE LIT UP 50N**

2460975 :: TMP 50N :: FEBRUARY 02 2025

CANADIAN ANGUS ASSOCIATION EPD'S

| Act BW | Adj WW | Adj YW | CE   | BW  | WW | YW | Milk | MCE | REA |
|--------|--------|--------|------|-----|----|----|------|-----|-----|
| 81     | 731    | 1319   | -5.5 | 4.6 | 55 | 96 | 24   | 4.0 |     |

- BROOKING EMERALD 9179
- RF LIT UP 357**
- LFE BA JENNIFER 29J
- RED U-2 RENOWN 193C
- RED W SUNRISE BRNDINA 713H**
- RED MOOSE CREEK BRNDINA 26E

Here is a big time opportunity to bring in new fresh genetics to the Red Angus Breed. Combining some of the best bulls and females from both the red and black angus. The maternal values of this bull is unmatched being a son off the highly recognized Brndina a 26E. We own this cow with our good friends at Wauter Valley Ranch. Not only has Brndina been an exceptional donor cow for us she has a flawless production record raising some of our highest selling sons and putting back in the herd some of the best females we have. The combination of Brndina and Lit Up leaves you an endless possibility of what you can create in your own herd. 267N is exactly what you would expect from this mating. He is big middled, up headed and has a flawless phenotype. He screams maternal

All these bulls are stamped much like there great sire Lit Up, sharp fronted, have lots of eye appeal and move extremely sound. 40N is one of our favorites from this group, he exemplifies these traits to a t, and is one of the first bulls to be found in the pen by every visitor. He is backed by the HF Rosebud cow family, out of a Ellingson Homegrown daughter. This bull is loaded up with real world maternal traits



**SIRE**  
RF LIT UP 357



**W SUNRISE LIT UP 62N**

2460979 :: TMP 62N :: FEBRUARY 02 2025

CANADIAN ANGUS ASSOCIATION EPD'S

| Act | Adj | Adj  |     |     |    |    |      |     |     |
|-----|-----|------|-----|-----|----|----|------|-----|-----|
| BW  | WW  | YW   | CE  | BW  | WW | YW | Milk | MCE | REA |
| 89  | 669 | 1222 | 3.5 | 1.1 | 56 | 96 | 21   | 8.0 |     |

BROOKING EMERALD 9179    RED SSS TYCOON 225E  
**RF LIT UP 357**    **RED W SUNRISE MISS CANDY 48J**  
 LFE BA JENNIFER 29J    RED BROWN CREEK MISS CANDY 3Z

62N is one of the absolute favorites and sale features of the Lit Up sire group. His dam 48J is a stunning cow with an absolute beautiful utter. His granddam 3Z was also a gorgeous Brown Creek Cow with a perfect utter and a great production record. 48J was one of our top picks to AI to Lit Up to bring in some fresh new genetics with exceptional cows in the pedigree. 62N is a very impressive individual that is masculine, deep ribbed, very good footed and attractive herd bull. This bull has a lot to offer both phenotypically and genetically



**MATERNAL GRANDSIRE**  
RED SSS TYCOON 225E



**SIRE**  
RF LIT UP 357



**PATERNAL GRANDAM**  
LFE BA JENNIFER 29J





**W SUNRISE OAKLAND 259N**

2461351 :: TMP 259N :: APRIL 02 2025

CANADIAN ANGUS ASSOCIATION EPD'S

| Act BW | Adj WW | Adj YW | CE  | BW  | WW | YW | Milk | MCE | REA |
|--------|--------|--------|-----|-----|----|----|------|-----|-----|
| 87     | 846    | 1306   | 4.0 | 1.4 | 52 | 84 | 25   | 8.0 |     |

- COLEMAN TRIUMPH 9145
- RIVERFRONT OAKLAND 330L**
- RIVERFRONT ANNIE K 119J
- RED SSS ENDORSE 639X
- RED BRN CRK LARKABA 3012N 44Z**
- RED CROWFOOT LARKABA 3012N

Here is an exciting herd bull that is bred for longevity and maternal. His dam has had a great track record here coming from the great Brown Creek herd. A sharp fronted, stout made bull that is sound footed and moves extremely well. He is up headed, an extreme outcross pedigree.



**W SUNRISE DEUCE 217N**

2457597 :: TMP 217N :: MARCH 17 2025

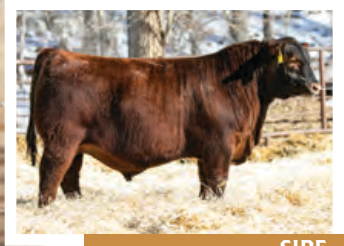
CANADIAN ANGUS ASSOCIATION EPD'S

| Act BW | Adj WW | Adj YW | CE   | BW   | WW | YW | Milk | MCE  | REA |
|--------|--------|--------|------|------|----|----|------|------|-----|
| 73     | 760    | 1260   | 10.0 | -0.4 | 42 | 83 | 25   | 10.0 |     |

- PEAK DOT ATTRACTIVE 186F
- SSS DEUCE 2H**
- U-2 ROSEBUD 157C
- RED PIE CAPTAIN 057
- RED W SUNRISE SENSE 217L**
- RED W SUNRISE SENSE 151J

Here is a pretty stylish made heifer bull. Smooth made, nice headed, backed by an awesome cow. SSS Deuce has done a tremendous job for us over the last many years. Here is a bull you can turn out with your heifers and still keep the heifers





**SIRE**  
RED W SUNRISE PIE CAPTAIN



**PATERNAL GRANDSIRE**  
RED PIE CAPTAIN 057



**RED W SUNRISE PIE CAPTAIN 61N**

2437733 :: TMP 61N :: FEBRUARY 02 2025

CANADIAN ANGUS ASSOCIATION EPD'S

| Act BW | Adj WW | Adj YW | CE  | BW  | WW | YW | Milk | MCE | REA |
|--------|--------|--------|-----|-----|----|----|------|-----|-----|
| 78     | 737    | 1407   | 0.0 | 2.4 | 45 | 83 | 27   | 3.0 |     |

- RED PIE CAPTAIN 057
- RED W SUNRISE PIE CAPTAIN 208L**
- RED W SUNRISE BURGESS 114J
- RED SSS GOOD TIME CHARLIE 364J
- RED W SUNRISE SUNFLOWER 372L**
- RED BROWN CRK SUNFLOWER 23X 8Z



**RED W SUNRISE PIE CAPTAIN 269N**

APPLIED FOR :: TMP 269N :: FEBRUARY 12 2025

CANADIAN ANGUS ASSOCIATION EPD'S (PE)

| Act BW | Act WW | Act YW | CE  | BW  | WW | YW | Milk | MCE | REA |
|--------|--------|--------|-----|-----|----|----|------|-----|-----|
| 65     | 740    | 1350   | 2.5 | 0.8 | 35 | 63 | 27   | 3.5 |     |

- RED PIE CAPTAIN 057
- RED W SUNRISE PIE CAPTAIN 208L**
- RED W SUNRISE BURGESS 114J
- RED U-2 RENOWN 193C
- RED W SUNRISE STAR DUST 269L**
- RED W SUNRISE STAR DUST 726E

Here is a sire group we are excited to bring to town for the first time. We are calving the second set of Pie Captain 208L calves and we have yet to touch a calf in two years on our heifers. These Pie Captain calves are true calving ease bulls with big time performance and have an attractive look. There is maternal greatness and sheer power wrapped up in this highly attractive herd bull candidate. To achieve this much muscle mass and masculinity in a heifer bull is hard to come by. Phenotypically he is an ideal Red Angus sire, good footed, straight lines, attractive head and out of an exceptional cow family. The Sunflower cow family is held in high regard here.

One of the standouts in the entire offering. A dark red big time calving ease bull. A bull that balances as much performance and shape as one could expect in a heifer bull. He is big middled, easy doing, attractive made, calving ease specialist. Backed by an exceptional female that you will see more of in the future.





**RED W SUNRISE PIE CAPTAIN 85N**

2438412 :: TMP 85N :: FEBRUARY 05 2025

CANADIAN ANGUS ASSOCIATION EPD'S

| Act BW | Adj WW | Adj YW | CE  | BW  | WW | YW | Milk | MCE | REA |
|--------|--------|--------|-----|-----|----|----|------|-----|-----|
| 75     | 686    | 1204   | 3.0 | 0.9 | 35 | 63 | 26   | 4.0 |     |

- RED PIE CAPTAIN 057
- RED W SUNRISE PIE CAPTAIN 208L**
- RED W SUNRISE BURGESS 114J
- RED MOOSE CREEK TYRONE 94G
- RED W SUNRISE LADY 344L**
- RED W SUNRISE LADY 277G

Here is a performance driven, calving ease herd bull. 85N is soft made, well balanced and extremely sound. An easy travelling herd bull that has an attractive maternal look to him. The Pie Captain sire group are nice headed, smooth made bulls with an easy doing look about them

**RED W SUNRISE PIE CAPTAIN 76N**

2438106 :: TMP 76N :: FEBRUARY 04 2025

CANADIAN ANGUS ASSOCIATION EPD'S

| Act BW | Adj WW | Adj YW | CE  | BW  | WW | YW | Milk | MCE | REA |
|--------|--------|--------|-----|-----|----|----|------|-----|-----|
| 79     | 644    | 1221   | 0.0 | 2.1 | 28 | 53 | 27   | 3.0 |     |

- RED PIE CAPTAIN 057
- RED W SUNRISE PIE CAPTAIN 208L**
- RED W SUNRISE BURGESS 114J
- RED MOOSE CREEK TYRONE 94G
- RED W SUNRISE SOAPY 328L**
- RED BROWN CREEK SOAPY 957W 53B

A real complete made heifer bull with an attractive angus head, long spined, sound moving herd bull, backed by a highly productive cow family. His granddam was an exceptional Endorse daughter that we got from Brown Creek dispersal





**RED W SUNRISE CAPTAIN 99N**

2438463 :: TMP 99N :: FEBRUARY 07 2025

CANADIAN ANGUS ASSOCIATION EPD'S

| Act BW | Act WW | Adj YW | CE  | BW   | WW | YW | Milk | MCE | REA |
|--------|--------|--------|-----|------|----|----|------|-----|-----|
| 72     | 661    | 1191   | 7.0 | -1.0 | 35 | 64 | 28   | 5.0 |     |



**RED W SUNRISE PIE CAPTAIN 74N**

2438105 :: TMP 74N :: FEBRUARY 04 2025

CANADIAN ANGUS ASSOCIATION EPD'S

| Act BW | Adj WW | Adj YW | CE  | BW  | WW | YW | Milk | MCE | REA |
|--------|--------|--------|-----|-----|----|----|------|-----|-----|
| 79     | 664    | 1205   | 2.0 | 1.1 | 32 | 59 | 27   | 3.0 |     |

- RED PIE CAPTAIN 057
- RED W SUNRISE PIE CAPTAIN 208L**
- RED W SUNRISE BURGESS 114J
- RED MOOSE CREEK TYRONE 94G
- RED W SUNRISE SHIVER 390L**
- RED U2 SHIVER 468E

- RED PIE CAPTAIN 057
- RED W SUNRISE PIE CAPTAIN 208L**
- RED W SUNRISE BURGESS 114J
- RED MOOSE CREEK TYRONE 94G
- RED W SUNRISE PENNY 314L**
- RED W SUNRISE PENNY 266G

Here is another exceptional breeding piece. These Pie Captain sons are highly attractive, big middled and easy fleshing with a bit of an outcross pedigree. Here is a sharp fronted, smooth made heifer bull with lots of presence and style.

Here might be one of my favorite heifer bulls in the entire offering for many reasons. Main reason would be the cow family he stems from. The Penny cow family is held in high regards here. They are highly attractive cattle with absolutely gorgeous utters. This big - time heifer bulls dam, granddam and great granddam are all beautiful uttered females with a great production record. Here is a heifer bull candidate that will defiantly improve utter quality in your replacement pen.





**RED W SUNRISE CHARLIE 171N**

2457586 :: TMP 171N :: MARCH 02 2025

CANADIAN ANGUS ASSOCIATION EPD'S

| Act BW | Act WW | Adj YW | CE  | BW  | WW | YW | Milk | MCE | REA |
|--------|--------|--------|-----|-----|----|----|------|-----|-----|
| 86     | 774    | 1397   | 1.0 | 2.0 | 54 | 86 | 26   | 5.0 |     |

RED SSS GOOD TIME CHARLIE 364J    RED U-2 AUTHENTIC 139A  
**RED W SUNRISE CHARLIE 358L**    **RED W SUNRISE SUNFLOWER 325G**  
 RED BROWN CREEK SOAPY 137C    RED BROWN CREEK SUNFLOWER 71C

Here is a big-time herd bull that we are extremely excited to bring to you. He is dark haired, Nice fronted and extremely attractive. These are the first sons to sell off the \$100,000 Red W Sunrise Charlie 358L that went to the good family and good cattlemen at Allison Farms. 358L was arguable one of the most exciting red bulls we have ever raised. He was an exciting herd bull that did so many things correct. He was perfect in his structure and phenotype and stood on an exceptional big dark foot. Not to mention one of the best attributes about 358L was his beautiful Brown Creek Dam. She checks off all the boxes, she is beautiful uttered, highly productive and has perfect feet. 171N only adds to this highly maternal pedigree. His dam Red W Sunrise Sunflower 325G is a beautiful made cow with an exceptional utter. The maternal predictability in this young herd bull is unmatched



**SIRE**  
RED W SUNRISE CHARLIE 358L



**PATERNAL GRANDAM**  
RED BROWN CREEK SOAPY 137C



**PATERNAL GRANDSIRE**  
RED SSS GOOD TIME CHARLIE





**RED W SUNRISE CHARLIE 104N**

2457614 :: TMP 104N :: FEBRUARY 07 2025

CANADIAN ANGUS ASSOCIATION EPD'S

| Act BW | Act WW | Adj YW | CE  | BW  | WW | YW  | Milk | MCE | REA |
|--------|--------|--------|-----|-----|----|-----|------|-----|-----|
| 80     | 705    | 1364   | 3.0 | 1.7 | 52 | 100 | 28   | 6.0 |     |

- RED SSS GOOD TIME CHARLIE 364J
- RED W SUNRISE CHARLIE 358L**
- RED BROWN CREEK SOAPY 137C
- RED MAR MAC DM TROOPER 39G
- RED LAURON ASTER 117K**
- RED LAURON ASTER 72C

104N is an eye-catching son of Charlie. He has a sharp herd bull presence with an attractive head. A real performance driven bull wrapped up in a maternal package. He is big middled, level hiped and hairy. This guy moves extremely well and carries himself very proud



**RED W SUNRISE CHARLIE 95N**

2457613 :: TMP 95N :: FEBRUARY 05 2025

CANADIAN ANGUS ASSOCIATION EPD'S

| Act BW | Adj WW | Adj YW | CE   | BW  | WW | YW | Milk | MCE | REA |
|--------|--------|--------|------|-----|----|----|------|-----|-----|
| 87     | 691    | 1197   | -2.0 | 3.1 | 43 | 77 | 23   | 3.0 |     |

- RED SSS GOOD TIME CHARLIE 364J
- RED W SUNRISE CHARLIE 358L**
- RED BROWN CREEK SOAPY 137C
- RED U-2 RENOWN 193C
- RED W SUNRISE COPPER 574H**
- RED BRN CRK COPPER 21P 10Z

An exciting, powerful bull with tons of natural shape and muscle. His extended sharp front end and nice head draws you to him every time in the pen. Has a soft, easy doing look with a highly maternal pedigree.





**RED W SUNRISE CHARLIE 174N**  
2457587 :: TMP 174N :: MARCH 07 2025

CANADIAN ANGUS ASSOCIATION EPD'S

| Act BW | Adj WW | Adj YW | CE  | BW  | WW | YW | Milk | MCE | REA |
|--------|--------|--------|-----|-----|----|----|------|-----|-----|
| 79     | 737    | 1278   | 2.0 | 1.8 | 46 | 76 | 27   | 7.0 |     |

- RED SSS GOOD TIME CHARLIE 364J
- RED W SUNRISE CHARLIE 358L**
- RED BROWN CREEK SOAPY 137C
- BLACK WHEEL BANK NOTE 16E
- RED W SUNRISE MRS. YOUNG 330G**
- RED GET-A-LONG MRS.YOUNG 9109

True to what you would expect from this sire group, 174N is a unique herd bull with extra length of body and natural muscle expression, smooth shouldered, sharp fronted and always catching your attention in the bull pen. He also has a bit of a unique pedigree on the bottom side, his young dam 330G is a beautiful uttered Bank Note daughter. Bank Note needs no introduction to the Angus breed, as he has raised some of the most exciting herd bulls and females in the entire industry



**RED W SUNRISE CHARLIE 59N**  
2455079 :: TMP 59N :: FEBRUARY 02 2025

CANADIAN ANGUS ASSOCIATION EPD'S

| Act BW | Adj WW | Adj YW | CE   | BW  | WW | YW | Milk | MCE | REA |
|--------|--------|--------|------|-----|----|----|------|-----|-----|
| 83     | 721    | 1298   | -1.0 | 2.4 | 43 | 81 | 26   | 4.0 |     |

- RED SSS GOOD TIME CHARLIE 364J
- RED W SUNRISE CHARLIE 358L**
- RED BROWN CREEK SOAPY 137C
- RED SVR GANGSTER 44X
- RED MOOSE CREEK SENSE 71E**
- RED MOOSE CREEK SENSE 18A

A real complete made heifer bull with an attractive angus head, long spined, sound moving herd bull, backed by a highly productive cow family. His granddam was an exceptional Endorse daughter that we got from Brown Creek dispersal





**RED W SUNRISE CHARLIE 232N**

2457598 :: TMP 232N :: MARCH 23 2025

CANADIAN ANGUS ASSOCIATION EPD'S

| Act BW | Adj WW | Adj YW | CE   | BW  | WW | YW | Milk | MCE | REA |
|--------|--------|--------|------|-----|----|----|------|-----|-----|
| 90     | 735    | 1406   | -2.0 | 2.9 | 39 | 70 | 23   | 4.0 |     |

RED SSS GOOD TIME CHARLIE 364J

RED SVR GANGSTER 44X

**RED W SUNRISE CHARLIE 358L**

**RED MOOSE CREEK GALENA 47E**

RED BROWN CREEK SOAPY 137C

RED BWA GALENA 5W

Here is another Charlie son, that has an extremely stylish profile and is backed by another exceptional Gangster female from the Moose Creek herd. 232N is a performance driven bull with a highly maternal make-up. Some of the best cows on the ranch are on both sides of his pedigree.



**RED W SUNRISE CHARLIE 178N**

2457588 :: TMP 178N :: MARCH 07 2025

CANADIAN ANGUS ASSOCIATION EPD'S

| Act BW | Adj WW | Adj YW | CE   | BW  | WW | YW | Milk | MCE | REA |
|--------|--------|--------|------|-----|----|----|------|-----|-----|
| 88     | 735    | 1265   | -3.0 | 3.2 | 45 | 81 | 23   | 3.0 |     |

RED SSS GOOD TIME CHARLIE 364J

RED BAR-E-L TRUMP CARD 21D

**RED W SUNRISE CHARLIE 358L**

**RED W SUNRISE LADY 277G**

RED BROWN CREEK SOAPY 137C

RED GET-A-LONG LADY 9139

178N is a real complete made, fault free herd bull. He is proud fronted, free moving and commands your attention in the bull pen. This stylish herd bull has lots to offer on both the performance side and the maternal side. 277G his dam is a very attractive female with a gorgeous utter.



**RED W SUNRISE CHARLIE 36N**

2455076 :: TMP 36N :: FEBRUARY 02 2025

CANADIAN ANGUS ASSOCIATION EPD'S

| Act BW | Adj WW | Adj YW | CE   | BW  | WW | YW | Milk | MCE | REA |
|--------|--------|--------|------|-----|----|----|------|-----|-----|
| 82     | 585    | 1197   | -1.0 | 2.4 | 29 | 56 | 21   | 2.0 |     |

RED SSS GOOD TIME CHARLIE 364J

RED NCJ LAZYMC RAMBLINMAN 305B

**RED W SUNRISE CHARLIE 358L**

**RED W SUNRISE SUNFLOWER 56F**

RED BROWN CREEK SOAPY 137C

RED BRN CRK SUNFLOWER 51L 24T

The Sunflower cow family has done a tremendous job here. Her Granddam 24T was a beautiful uttered cow that we got from Brown Creek. 36N's dam has followed in her mom's footsteps and has been a great cow here at the ranch. This Charlie son is dark made, sound footed and extremely attractive



**RED W SUNRISE CHARLIE 213N**

2457609 :: TMP 213N :: MARCH 14 2025

CANADIAN ANGUS ASSOCIATION EPD'S

| Act BW | Adj WW | Adj YW | CE   | BW  | WW | YW | Milk | MCE | REA |
|--------|--------|--------|------|-----|----|----|------|-----|-----|
| 84     | 719    | 1189   | -2.0 | 3.2 | 40 | 75 | 24   | 4.0 |     |

RED SSS GOOD TIME CHARLIE 364J

RED U-2 RENOWN 193C

**RED W SUNRISE CHARLIE 358L**

**RED W SUNRISE SENSE 151J**

RED BROWN CREEK SOAPY 137C

RED MOOSE CREEK SENSE 71E

Here is a fancy made herd bull that everyone will likely find. Soft made, easy doing with an eye-catching phenotype. His young dam is a very attractive young cow that goes back to the highly productive 71E Gangster cow we got from Moose Creek. There's a lot of predictability stacked in this young herd bull's pedigree.



**RED W SUNRISE CHARLIE 187N**

2457589 :: TMP 187N :: MARCH 07 2025

CANADIAN ANGUS ASSOCIATION EPD'S

| Act BW | Adj WW | Adj YW | CE  | BW  | WW | YW | Milk | MCE | REA |
|--------|--------|--------|-----|-----|----|----|------|-----|-----|
| 90     | 716    | 1210   | 2.0 | 2.2 | 43 | 79 | 28   | 2.0 |     |

RED SSS GOOD TIME CHARLIE 364J

RED LAZY MC CC DETOUR 2W

**RED W SUNRISE CHARLIE 358L**

**RED RRAR BARONETTE 7Z**

RED BROWN CREEK SOAPY 137C

RED RRAR BARONETTE 47T

Stamped similar to his brothers, here is an attractive made dark red herd bull that's up headed and profiles extremely well. A fault free bull that is free moving and sound made



**RED W SUNRISE CHARLIE 213N**

2457609 :: TMP 213N :: MARCH 14 2025

CANADIAN ANGUS ASSOCIATION EPD'S

| Act BW | Adj WW | Adj YW | CE   | BW  | WW | YW | Milk | MCE | REA |
|--------|--------|--------|------|-----|----|----|------|-----|-----|
| 84     | 719    | 1189   | -2.0 | 3.2 | 40 | 75 | 24   | 4.0 |     |

RED SSS GOOD TIME CHARLIE 364J

RED U-2 RENOWN 193C

**RED W SUNRISE CHARLIE 358L**

**RED W SUNRISE SENSE 151J**

RED BROWN CREEK SOAPY 137C

RED MOOSE CREEK SENSE 71E



**RED W SUNRISE CHARLIE 98N**

2438462 :: TMP 98N :: FEBRUARY 07 2025

CANADIAN ANGUS ASSOCIATION EPD'S

| Act BW | Adj WW | Adj YW | CE   | BW  | WW | YW | Milk | MCE | REA |
|--------|--------|--------|------|-----|----|----|------|-----|-----|
| 95     | 672    | 1290   | -6.0 | 4.6 | 50 | 90 | 25   | 2.0 |     |

RED SSS GOOD TIME CHARLIE 364J    RED U-2 RENOWN 193C  
**RED W SUNRISE CHARLIE 409L**    **RED LCF PRINCESS 110F**  
 RED MOOSE CREEK BRNDINA 26E    RED RRAR PRINCESS 21Y

Here is the first sons to sell off of Red W Sunrise Charlie 409L. 409L was a very special herd bull that was raised by the great Moose Creek Brndina 26E donor cow. 409L went to our good friends at Shaggy Meadows Red Angus, where he has done a tremendous job. He was admired for his big-time herd bull presence and his unbelievable look about him. 98N possesses a lot of the same characteristics as his great sire. He is up headed, sharp fronted and had a herd bull look at a very young age.



**SIRE**  
RED W SUNRISE CHARLIE 409L



**PATERNAL GRANDAM**  
RED MOOSE CREEK BRNDINA 26E



**RED W SUNRISE CHARLIE 154N**

2440665 :: TMP 154N :: FEBRUARY 22 2025

CANADIAN ANGUS ASSOCIATION EPD'S (PE)

| Act BW | Adj WW | Adj YW | CE   | BW  | WW | YW | Milk | MCE | REA |
|--------|--------|--------|------|-----|----|----|------|-----|-----|
| 85     | 702    | 1314   | -2.0 | 2.5 | 45 | 85 | 26   | 2.0 |     |

- RED SSS GOOD TIME CHARLIE 364J
- RED W SUNRISE CHARLIE 409L
- RED MOOSE CREEK BRNDINA 26E
- RED BAR-E-L TRUMP CARD 21D
- RED W SUNRISE PENNY 266G
- RED GET-A-LONG PENNY 9119

154N has as much presence and style as any bull in the pen. An attractive made, stylish herd bull stamped with a lot of the great characteristics that attracted everyone to his sire. 266G is a gorgeous uttered cow with a great production record. The utters on the females in this herd bulls pedigree will leave a lasting impression on your cow herd.

**RED W SUNRISE CHARLIE 169N**

APPLIED FOR :: TMP 169N :: MARCH 01 2025

CANADIAN ANGUS ASSOCIATION EPD'S

| Act BW | Act WW | Act YW | CE   | BW  | WW | YW | Milk | MCE | REA |
|--------|--------|--------|------|-----|----|----|------|-----|-----|
| 69     | 590    | 1290   | -1.0 | 3.0 | 54 | 95 | 29   | 6.5 |     |

- RED SSS GOOD TIME CHARLIE 364J
- RED W SUNRISE CHARLIE 409L
- RED MOOSE CREEK BRNDINA 26E
- BLACK WHEEL BANK NOTE 16E
- W SUNRISE TIBBIE 219G
- HF TIBBIE 211D

Here is an exciting herd bull that is as maternally bred as anything in the entire offering. Having the two great donors, the 26E on the top side and the 219G on the bottom side makes the predictability of the females of this calving ease herd sire to be remarkable. Not only will he sire beautiful uttered females he will fix utters as well



MATERNAL SISTER  
TMP 24J



**RED W SUNRISE CHARLIE 107N**

2438870 :: TMP 107N :: FEBRUARY 09 2025

CANADIAN ANGUS ASSOCIATION EPD'S

| Act BW | Adj WW | Adj YW | CE   | BW  | WW | YW | Milk | MCE | REA |
|--------|--------|--------|------|-----|----|----|------|-----|-----|
| 92     | 683    | 1259   | -2.0 | 2.9 | 44 | 85 | 24   | 4.0 |     |

RED SSS GOOD TIME CHARLIE 364J  
**RED W SUNRISE CHARLIE 409L**  
 RED MOOSE CREEK BRNDINA 26E

RED U-2 RECKONING 149A  
**RED W SUNRISE WANTED 21F**  
 RED BRN CRK WANTED 7R 30Y

An extra stylish, high performing Charlie son. This new sire groups legacy will defiantly be the females they leave behind



**RED W SUNRISE CHARLIE 223N**

APPLIED FOR :: TMP 223N :: MARCH 17 2025

CANADIAN ANGUS ASSOCIATION EPD'S (PE)

| Act BW | Act WW | Adj YW | CE   | BW  | WW | YW  | Milk | MCE | REA |
|--------|--------|--------|------|-----|----|-----|------|-----|-----|
| 91     | 620    |        | -7.5 | 5.2 | 58 | 101 | 23   | 0.5 |     |

RED SSS GOOD TIME CHARLIE 364J  
**RED W SUNRISE CHARLIE 409L**  
 RED MOOSE CREEK BRNDINA 26E

RED U-2 AUTHENTIC 139A  
**RED BROWN CREEK MOLLY 99C**  
 RED BROWN CREEK MOLLY 14R 1U

223N is full of genetic potential. His dam 99C has been an outstanding cow. 99C has been one of our best Red Angus cows, she has an amazing production record who stands on perfect feet and has a gorgeous utter. She has raised multiply sale features and has daughters in the herd. Here is just a young end of march calf with a world of potential. He is phenotypically perfect and side profiles extremely well. The daughters off of this young herd bull will leave a lasting impression on your cow herd.



**RED W SUNRISE CHARLIE 139N**

2460587 :: TMP 139N :: FEBRUARY 16 2025

CANADIAN ANGUS ASSOCIATION EPD'S

| Act BW | Adj WW | Adj YW | CE  | BW  | WW | YW | Milk | MCE | REA |
|--------|--------|--------|-----|-----|----|----|------|-----|-----|
| 79     | 611    | 1152   | 0.5 | 2.4 | 44 | 78 | 22   | 5.5 |     |

RED SSS GOOD TIME CHARLIE 364J  
**RED W SUNRISE CHARLIE 409L**  
 RED MOOSE CREEK BRNDINA 26E

RED U-2 RENOWN 193C  
**RED LCF BARONETE 86F**  
 RED RRAR BARONETTE 2X

One of the really cool looking bulls from this offering. A high quality Charlie son with extra look and style.



**RED W SUNRISE RENOWN 253N**  
2456373 :: TMP 253N :: MARCH 26 2025

CANADIAN ANGUS ASSOCIATION EPD'S

| Act BW | Adj WW | Adj YW | CE   | BW  | WW | YW | Milk | MCE | REA |
|--------|--------|--------|------|-----|----|----|------|-----|-----|
| 88     | 1020   | 1478   | -7.0 | 4.0 | 39 | 62 | 20   | 2.0 |     |

- RED U-2 RECKONING 149A
- RED U-2 RENOWN 193C**
- RED U-2 ENVIOUS 147X
- RED CROWFOOT 4ACES 2193Z
- RED W SUNRISE DUCHESS 520H**
- RED TER-RON DUCHESS 6E

Renown has been an absolute staple in our program since the beginning. He has the ability to sire sound, functionable, easy doing cows like no other bull we have come across. We finally lost him this year and he has naturally bred every year up until now and he still stood on an absolutely perfect black foot. This set of Renown sons is maybe the most consistent group he has ever left us. They are big stout performance bulls with dark hair and stand on exceptional feet. 253N is what we have come to expect from this impressive sire. He is big middled, nice headed, and has a true herd bull presence. Unfortunately, this will be the last set of calves we have of this great sire



**RED W SUNRISE RENOWN 136N**  
2460641 :: TMP 136N :: FEBRUARY 13 2025

CANADIAN ANGUS ASSOCIATION EPD'S

| Act BW | Adj WW | Adj YW | CE   | BW  | WW | YW | Milk | MCE  | REA |
|--------|--------|--------|------|-----|----|----|------|------|-----|
| 91     | 818    | 1324   | -8.5 | 4.7 | 41 | 65 | 21   | -0.5 |     |

- RED U-2 RECKONING 149A
- RED U-2 RENOWN 193C**
- RED U-2 ENVIOUS 147X
- RED SIX MILE SIGNATURE 295B
- RED RUST MISS COUNTESS 7213E**
- RED SOO LINE COUNTESS 6409

This is an exciting sire group this year. These half brothers are all stamped in a similar way this year, dark red, soft made, easy doing bulls that are extremely sound. Here is a pretty special herd bull out of this exciting sire group, that is backed by an absolutely tremendous dam. Not only does she have a beautiful utter and gorgeous look she has a production record to back it. Here is a big time herd bull that is chalked full of real world traits we all strive for





**RED W SUNRISE RENOWN 101N**

2438465 :: TMP 101N :: FEBRUARY 07 2025

CANADIAN ANGUS ASSOCIATION EPD'S

| Act BW | Act WW | Adj YW | CE   | BW  | WW | YW | Milk | MCE | REA |
|--------|--------|--------|------|-----|----|----|------|-----|-----|
| 95     | 886    | 1416   | -8.0 | 5.3 | 60 | 95 | 26   | 0.0 |     |

RED U-2 RECKONING 149A

**RED U-2 RENOWN 193C**

RED U-2 ENVIOUS 147X

RED BIEBER ROLLIN DEEP Y118

**RED W SUNRISE MOLLY 731E**

RED BROWN CRK MOLLY 14R 10X

Here is one of the stoutest and thickest bulls in the offering. A big-time herd bull that everyone will love in the pen for being soft made, easy doing, dark red and sound structured. A real performance driven herd bull wrapped up in stylish maternal package.

**RED W SUNRISE RENOWN 150N**

2440663 :: TMP 150N :: FEBRUARY 21 2025

CANADIAN ANGUS ASSOCIATION EPD'S

| Act BW | Adj WW | Adj YW | CE   | BW  | WW | YW | Milk | MCE | REA |
|--------|--------|--------|------|-----|----|----|------|-----|-----|
| 90     | 705    | 1210   | -7.0 | 4.8 | 34 | 53 | 24   | 0.0 |     |

RED U-2 RECKONING 149A

**RED U-2 RENOWN 193C**

RED U-2 ENVIOUS 147X

RED MOOSE CREEK TYRONE 94G

**RED W SUNRISE COUNTLESS 814K**

RED RUST MISS COUNTLESS 7213E

Here is an exciting herd bull with a big-time presence. Dark red, sharp fronted and sound made. Backed by the cherished Countess cow family





**RED W SUNRISE RENOWN 141N**

2440480 :: TMP 141N :: FEBRUARY 20 2025

CANADIAN ANGUS ASSOCIATION EPD'S

| Act BW | Adj WW | Adj YW | CE   | BW  | WW | YW | Milk | MCE | REA |
|--------|--------|--------|------|-----|----|----|------|-----|-----|
| 89     | 844    | 1303   | -7.0 | 5.2 | 54 | 80 | 27   | 1.0 |     |

- RED U-2 RECKONING 149A
- RED U-2 RENOWN 193C**
- RED U-2 ENVIOUS 147X
- RED HOWE TEMPT 106A
- RED HOWE MS MAT 163C**
- RED HOWE MS MAT 17X

141N is a pretty neat made herd bull with abundance of muscle, natural thickness and deep rib only to compliment his flawless structure and dark red presence. Backed by an exceptional cow from Howes that has done a tremendous job and has an outstanding production record. This bull is chalked full of longevity, fertility and maternal traits



**RED W SUNRISE RENOWN 156N**

2440666 :: TMP 156N :: FEBRUARY 21 2025

CANADIAN ANGUS ASSOCIATION EPD'S

| Act BW | Adj WW | Adj YW | CE   | BW  | WW | YW | Milk | MCE | REA |
|--------|--------|--------|------|-----|----|----|------|-----|-----|
| 80     | 780    | 1380   | -3.0 | 3.1 | 48 | 76 | 25   | 4.0 |     |

- RED U-2 RECKONING 149A
- RED U-2 RENOWN 193C**
- RED U-2 ENVIOUS 147X
- RED CROWFOOT 4ACES 2193Z
- RED W SUNRISE MS MAT 928K**
- RED W SUNRISE TYCOON 364G

A performance driven Renown son. With a stylish side profile and a sleek front end. The Renown calves are sound made as any in the industry.





**RED W SUNRISE RENOWN 157N**

2440667 :: TMP 157N :: FEBRUARY 21 2025

CANADIAN ANGUS ASSOCIATION EPD'S

| Act BW | Adj WW | Adj YW | CE    | BW  | WW | YW | Milk | MCE | REA |
|--------|--------|--------|-------|-----|----|----|------|-----|-----|
| 90     | 725    | 1231   | -11.0 | 6.4 | 41 | 67 | 26   | 0.0 |     |

RED U-2 RECKONING 149A

**RED U-2 RENOWN 193C**

RED U-2 ENVIOUS 147X

RED CROWFOOT 4ACES 2193Z

**RED W SUNRISE MS MAT 59J**

RED HOWE MS MAT 163C

Full of muscle and masculinity and has had an early herd bull look to him. Another exceptional breeding piece to add performance and maternal to your cow herd



**RED W SUNRISE RENOWN 193N**

2444678 :: TMP 193N :: MARCH 12 2025

CANADIAN ANGUS ASSOCIATION EPD'S

| Act BW | Adj WW | Adj YW | CE   | BW  | WW | YW | Milk | MCE | REA |
|--------|--------|--------|------|-----|----|----|------|-----|-----|
| 90     | 754    | 1165   | -5.0 | 4.0 | 43 | 60 | 18   | 3.0 |     |

RED U-2 RECKONING 149A

**RED U-2 RENOWN 193C**

RED U-2 ENVIOUS 147X

RED U6 HESSTON 14Z

**RED HOWE JOANNA 145C**

RED HOWE JOANNA 158Y

Another exceptional breeding piece. An extra stylish made Renown son backed by an absolute gorgeous Howes female. 145C is a very angular, attractive made cow with a gorgeous udder.



**DAM**  
RED HOWE JOANNA 145C



**SIRE**  
SVS RANCHER 42H



**PATERNAL GRANDAM**  
HLTS SAMMIE



**W SUNRISE RANCHER 31N**

BPG1540982 :: TMP 31N :: JANUARY 24 2025

CANADIAN SIMMENTAL ASSOCIATION EPD'S

| Act BW | Act WW | Act YW | CE  | BW  | WW   | YW    | Milk | MCE | REA  |
|--------|--------|--------|-----|-----|------|-------|------|-----|------|
| 95     | 900    | 1510   | 5.9 | 4.3 | 92.7 | 131.6 | 23.0 | 2.6 | 1.06 |

- SVS TYCOON 841F
- WFL WESTCOTT 24C
- SVS RANCHER 42H**
- SNIDER'S LIBERTY**
- HLTS SAMMIE
- 3D MISS RED MAGENTA 496T

We are excited to once again bring you this elite set of Simmental bulls. Here is a definite sale feature from the Simmental division, a bull that is admired by everyone that stops. A big time herd bull with as much power and mass as one could hope for and still maintaining a highly maternal stylish phenotype and sound structure. He is off of one of the best breeding bulls the Simmental world has seen, Rancher has done a tremendous job, siring some of the most highly demanded sons and world class females.



**W SUNRISE SOUTHSIDE 023N**

APPLIED FOR :: TMP 023N :: JANUARY 13 2025

CANADIAN SIMMENTAL ASSOCIATION EPD'S (PE)

| Act BW | Act WW | Act YW | CE   | BW  | WW   | YW   | Milk | MCE | REA |
|--------|--------|--------|------|-----|------|------|------|-----|-----|
| 80     | 850    | 1400   | 11.6 | 0.9 | 73.1 | 99.9 | 21.5 | 5.7 | 0.6 |

- WLB TOP TIER 456G
- RF CALIBER 014G
- W2 SOUTHSIDE 2K**
- KT CARIEVALE 3023**
- RCR FLIRTY MAGILCUTY 7D
- MRL MISS 6683D

Here is a big-time calving ease herd bull. A bull that commends your presence with his abundance of performance, mass and true herd bull look. He moves extremely well and is sound on his feet and is backed by the absolute stunning KT 3023 donor dam. The Southside calves have done extremely well for us, they calve easy and grow like crazy. It's hard to balance this much performance and style in a calving ease herd sire.





**W SUNRISE SOUTHSIDE 112N**

BPG1540998 :: TMP 112N :: FEBRUARY 07 2025

CANADIAN SIMMENTAL ASSOCIATION EPD'S

| Act BW | Act WW | Act YW | CE   | BW  | WW   | YW   | Milk | MCE | REA  |
|--------|--------|--------|------|-----|------|------|------|-----|------|
| 75     | 730    | 1300   | 13.1 | 0.7 | 68.2 | 87.5 | 26.1 | 6.5 | 0.69 |

- WLB TOP TIER 456G
- W2 SOUTHSIDE 2K**
- RCR FLIRTY MAGILCUTY 7D
- SVS TYCOON 841F
- RCR FLIRTY MAGILCUTY 7D**
- TER-RON NAOMI 550C

Here is another exciting calving ease option. A herd bull with a little added look and style, moderate made, big hiped, stout and hairy. Extremely sound and easy moving. A bull that is maternally bred and can get out and handle the big country.



**W SUNRISE TOP TIER 640N**

APPLIED FOR :: TMP 640N :: JANUARY 03 2025

CANADIAN SIMMENTAL ASSOCIATION EPD'S (PE)

| Act BW | Act WW | Adj YW | CE  | BW  | WW   | YW   | Milk | MCE | REA  |
|--------|--------|--------|-----|-----|------|------|------|-----|------|
| 90     | 850    | 1360   | 8.5 | 2.3 | 62.1 | 86.3 | 21.4 | 2.8 | 0.78 |

- WLB TOP TIER 456G
- LRX TOP TIER 44K**
- FSCI AVA B408
- LFE LOYALTY 836H
- LFE BS MARY 640K**
- LFE BS MARY 643G

Here is a pretty unique herd bull that everyone will have on the top of their list and for good reasons. He is phenotypically perfect, eye catching, Blazed faced herd bull. Not to mention he is royally bred. His dam LFE 640K is an absolutely stunning donor cow. She is angular fronted, sharp made and has an absolute gorgeous udder. Here is a bull that you could build an entire herd around.



**DAM**  
LFE BS MARY 640K



**SIRE**  
CROSSROAD DATELINE 59L



**W SUNRISE DATELINE 71N**

BPG1540972 :: TMP 71N :: JANUARY 29 2025

CANADIAN SIMMENTAL ASSOCIATION EPD'S

| Act BW | Act WW | Act YW | CE  | BW  | WW   | YW    | Milk | MCE | REA  |
|--------|--------|--------|-----|-----|------|-------|------|-----|------|
| 100    | 930    | 1450   | 7.4 | 2.9 | 84.4 | 117.4 | 21.3 | 5.2 | 0.89 |

RFS HEAVY HITTER H45

DEEG MR 76B

**CROSSROAD DATELINE 59L**

**OUTLAW MS COBRA 746E**

TSZ KEEPSAKE 703A

TESS MS RED 7Z

Dateline 59L did a tremendous job for us. He provides an outcross pedigree with outstanding set of numbers and staying true to the maternal side of this great industry, he is backed by some of the most beautiful uttered cows in the entire industry. We are extremely excited to offer you this highly maternal outcross pedigree. 71N is exactly what we hoped for with this cross. He is nice made, sound footed and performance driven. Its hard - to - find bulls with this much power, presence and performance and still hold a maternal line.



**W SUNRISE DATELINE 37N**

BPG1540993 :: TMP 37N :: JANUARY 25 2025

CANADIAN SIMMENTAL ASSOCIATION EPD'S

| Act BW | Act WW | Act YW | CE  | BW  | WW   | YW    | Milk | MCE | REA  |
|--------|--------|--------|-----|-----|------|-------|------|-----|------|
| 94     | 810    | 1410   | 9.9 | 2.3 | 84.1 | 121.1 | 19.3 | 4.4 | 0.93 |

RFS HEAVY HITTER H45

WLB GO DADDY 52Z 368D

**CROSSROAD DATELINE 59L**

**TER-RON KIWI 827F**

TSZ KEEPSAKE 703A

TER-RON KIWI 563C

Everyone loves these blaze faced bulls and here is one that is phenotypically perfect, sharp made and royally bred. The females that this big - time bull will leave, will have a lasting impression on anyone's cow herd. He is an ideal herd bull, proud fronted with an attractive herd, one of the fanciest bulls in the entire offering





**W SUNRISE DATELINE 164N**

BPG1540991 :: TMP 164N :: FEBRUARY 24 2025

CANADIAN SIMMENTAL ASSOCIATION EPD'S

| Act BW | Act WW | Act YW | CE   | BW  | WW   | YW    | Milk | MCE | REA  |
|--------|--------|--------|------|-----|------|-------|------|-----|------|
| 81     | 750    | 1380   | 12.5 | 1.2 | 74.4 | 109.4 | 26.2 | 6.9 | 0.90 |

- RFS HEAVY HITTER H45
- CROSSROAD DATELINE 59L**
- TSZ KEEPSAKE 703A
- TER-RON SPECIALIST 418B
- TER-RON PHYLCIA 077E**
- TER-RON PHYLCIA 577C

We couldn't be more pleased with this sire group; they are exactly what we set out to do in the Simmental breed. They offer a little extra performance and are still designed to build a cow herd. The maternal values of these bulls will pay big dividends in the future as we re-build this cowherd in Canada. Bulls like these are going to play a major role in the future. Sound made, phenotypically eye catching and staked pedigrees of exceptional cows



**W SUNRISE DATELINE 12N**

BPRS1540987 :: TMP 12N :: JANUARY 20 2025

CANADIAN SIMMENTAL ASSOCIATION EPD'S

| Act BW | Act WW | Act YW | CE   | BW  | WW   | YW    | Milk | MCE | REA  |
|--------|--------|--------|------|-----|------|-------|------|-----|------|
| 80     | 750    | 1380   | 14.6 | 0.6 | 77.9 | 115.0 | 21.7 | 7.7 | 0.62 |

- RFS HEAVY HITTER H45
- CROSSROAD DATELINE 59L**
- TSZ KEEPSAKE 703A
- COLEMAN BRAVO 6313
- BLAIR'S SCREAM 800K**
- RED BLAIR'S SCREAM 530E

The females here will be absolutely exceptional. Not only is the top side full of great donor cows this big-time herd bull is backed by an absolute stunning dam we purchased from Luke and Jordie. An attractive made herd bull with a highly maternal presence about him.





**W SUNRISE DATELINE 16N**

APPLIED FOR :: TMP 16N :: FEBRUARY 01 2025

CANADIAN ANGUS ASSOCIATION EPD'S

| Act BW | Act WW | Act YW | CE  | BW  | WW   | YW    | Milk | MCE | REA  |
|--------|--------|--------|-----|-----|------|-------|------|-----|------|
| 82     | 730    | 1350   | 6.8 | 3.1 | 83.0 | 120.5 | 22.1 | 4.0 | 0.84 |

RFS HEAVY HITTER H45

**CROSSROAD DATELINE 59L**

TSZ KEEPSAKE 703A

BLCC MR 5015C 65H

**BLCC MISS LEGACY 324K**

TWIN BRAE GALAXY 433G

A real complete made, fault free herd bull that is proud fronted, free moving and commands your attention in the pen. Here is a stylish herd bull that has lots to offer on both the performance and maternal side. He comes with a very modest birth weight and an exceptional dam



**W SUNRISE DATELINE 148N**

BPG1541008 :: TMP 148N :: FEBRUARY 19 2025

CANADIAN ANGUS ASSOCIATION EPD'S

| Act BW | Act WW | Act YW | CE  | BW  | WW   | YW    | Milk | MCE | REA  |
|--------|--------|--------|-----|-----|------|-------|------|-----|------|
| 90     | 830    | 1420   | 6.6 | 3.6 | 84.5 | 120.8 | 22.7 | 4.6 | 0.92 |

RFS HEAVY HITTER H45

**CROSSROAD DATELINE 59L**

TSZ KEEPSAKE 703A

RF DOUBLE UP 37W

**TER-RON BLACK LADY 554C**

MADER BLACK LADY 54Z

A bull with big time performance numbers that offers a lot of real world traits to the cattle industry. Sound made, good footed a bull that can not only give you highly markable steers in the fall, you will love the females as well





**W SUNRISE FOLSOM PRISON 183N**

BPG1540963 :: TMP 183N :: MARCH 05 2025

CANADIAN SIMMENTAL ASSOCIATION EPD'S

| Act BW | Act WW | Act YW | CE  | BW  | WW   | YW    | Milk | MCE | REA  |
|--------|--------|--------|-----|-----|------|-------|------|-----|------|
| 83     | 720    | 1340   | 9.4 | 0.5 | 85.0 | 130.0 | 20.0 | 5.4 | 1.10 |

MADER WALK THE LINE 92J | MADER WALK THIS WAY 224B  
**MADER FOLSOM PRISON 66L** | **SVS RED JENNA 66K**  
 MADER VIOLET 49H | SVS BLK JENNA 65A

Folsom Prison is a new highly maternal, calving ease herd bull with an exciting pedigree. Folsom Prison and this sire group has a ton to offer as a calving ease option that will leave a tremendous set of females. Here is a son that is impressive from every angle, fluent in his movement and is sound footed.



**W SUNRISE FOLSOM PRISON 225N**

BPG1541002 :: TMP 225N :: MARCH 16 2025

CANADIAN SIMMENTAL ASSOCIATION EPD'S

| Act BW | Act WW | Act YW | CE   | BW  | WW   | YW    | Milk | MCE | REA  |
|--------|--------|--------|------|-----|------|-------|------|-----|------|
| 74     | 710    | 1290   | 10.9 | 1.0 | 86.4 | 135.2 | 16.7 | 6.2 | 1.09 |

MADER WALK THE LINE 92J | MADER THE NATIONAL 43E  
**MADER FOLSOM PRISON 66L** | **MADER A LIST 159K**  
 MADER VIOLET 49H | MADER A LIST 63G

Here is a highly attractive calving ease herd bull with an unmistakable maternal presence to him. These Folsom Prison calves are extremely clean made, nice headed and backed by some of the most predictable cows in the industry. Longevity, fertility is built right into him.



**W SUNRISE FOLSOM PRISON 175N**

BPG1540976 :: TMP 175N :: MARCH 03 2025

CANADIAN SIMMENTAL ASSOCIATION EPD'S

| Act BW | Act WW | Act YW | CE  | BW  | WW   | YW    | Milk | MCE | REA  |
|--------|--------|--------|-----|-----|------|-------|------|-----|------|
| 90     | 700    | 1310   | 8.1 | 1.8 | 79.1 | 119.6 | 20.0 | 4.2 | 0.99 |

MADER WALK THE LINE 92J | WHEATLAND FINAL AFFAIR  
**MADER FOLSOM PRISON 66L** | **TER-RON JOLLETTE 730E**  
 MADER VIOLET 49H | CG BLACK JOLETTE 230X

Here is a bull that you can appreciate for his natural muscle expression, width of top, depth of quarter, bone mass, coupled with his attractive style and sound structure. An exciting herd bull with a little extra performance, while still maintaining maternal values.



**W SUNRISE BOOMER 9N**

BPG1541005 :: TMP 9N :: JANUARY 18 2025

CANADIAN SIMMENTAL ASSOCIATION EPD'S

| Act BW | Act WW | Act YW | CE  | BW  | WW   | YW    | Milk | MCE | REA  |
|--------|--------|--------|-----|-----|------|-------|------|-----|------|
| 82     | 740    | 1370   | 2.5 | 6.1 | 98.3 | 148.3 | 20.1 | 1.7 | 69.3 |

RF SHAKEDOWN 074H  
RF BOOMER 262K  
RF FLIRT 850F

WHEATLAND FINAL AFFAIR  
TER-RON MS 754E  
DEEG MS 54Y

Here is a pair of full brothers that I absolutely love in the bull pen. They are phenotypically perfect, stylish made and stand on exceptional feet and move with ease. These full brothers are absolutely stacked with maternal greatness; we have milking RF Boomer daughters this year and they have gorgeous udders. They are the type and kind of female that you can't have enough of. The predictability of these exciting brothers are hard to achieve. They will improve anyone's heifer pen.



**W SUNRISE BOOMER 8N**

BPG1541006 :: TMP 8N :: JANUARY 18 2025

CANADIAN SIMMENTAL ASSOCIATION EPD'S

| Act BW | Act WW | Act YW | CE  | BW  | WW   | YW    | Milk | MCE | REA  |
|--------|--------|--------|-----|-----|------|-------|------|-----|------|
| 82     | 700    | 1320   | 2.5 | 6.1 | 98.3 | 148.3 | 20.1 | 1.7 | 1.01 |





**W SUNRISE AEROSMITH 117N**

APPLIED FOR :: TMP 117N :: FEBRUARY 09 2025

CANADIAN SIMMENTAL ASSOCIATION EPD'S

| Act BW | Act WW | Act YW | CE  | BW  | WW    | YW    | Milk | MCE | REA |
|--------|--------|--------|-----|-----|-------|-------|------|-----|-----|
| 90     | 740    | 1330   | 9.6 | 2.2 | 100.4 | 149.3 | 18.9 | 5.5 | 1.0 |

MADER WALK THIS WAY 224B | MADER WALK THE LINE 92J  
**ERIXON AEROSMITH 11K** | **KT SCREAM 3317**  
 IRCC DARLIN' 613D | RF SCREAM 215Z

Here is a moderate made big time herd bull with tremendous cow power backing him. His dam KT Scream has done an exceptional job her first calf. The maternal values that this herd bull possess is exciting for the industry. The Scream productivity is one of the greatest in the industry and here is your chance to add this amazing cow family to your herd.



**W SUNRISE DATELINE 234N**

APPLIED FOR :: TMP 234N :: JANUARY 29 2025

CANADIAN SIMMENTAL ASSOCIATION EPD'S

| Act BW | Act WW | Act YW | CE  | BW  | WW   | YW    | Milk | MCE | REA |
|--------|--------|--------|-----|-----|------|-------|------|-----|-----|
| 70     | 790    | 1300   | 8.3 | 2.4 | 76.4 | 114.0 | 21.6 | 3.6 | 0.8 |

SVS RANCHER 42H | R PLUS 5015C  
**SVS JUSTIFIED 62K** | **BLCC WHOOPIE 34K**  
 CMS SODA POP 410B | BLCC MISS RED ROCK 51B

We couldn't be more exciting about Justified or Justified calves. Here is an impressive fault free herd bull that is backed by an absolutely outstanding female. As soon as Justified stepped off the trailer at W Sunrise we knew immediately that was going to be a bull for us. He is extremely attractive, fault free structure and presence and moved as good as any bull we have ever seen. He stands on absolute perfect feet and is backed by an exceptional set of cows. Bulls like him and his sons are built for the real world.





**W SUNRISE LETHAL WEAPON 110N**

PG1540426 :: TMP 110N :: FEBRUARY 06 2025

CANADIAN SIMMENTAL ASSOCIATION EPD'S

| Act BW | Act WW | Act YW | CE   | BW  | WW   | YW    | Milk | MCE | REA  |
|--------|--------|--------|------|-----|------|-------|------|-----|------|
| 88     | 710    | 1310   | 14.1 | 0.3 | 79.4 | 107.0 | 27.1 | 9.0 | 0.90 |

SVS RANCHER 42H    WXR REDPATHS KOSMO 38Z  
**ULTRA/BARLEE LETHAL WEAPON 63L**    **TER-RON NAOMI 422B**  
 WFL RED SAGE 506C    TER-RON NAOMI 22Z

Without a debt a sale feature in this year's bull sale. My favorite red Simmental bull and for good reasons. He is stout, great footed, nice headed and has an unmistakable herd bull presence. Here is a bull with a big-time pedigree backing him. Lethal Weapon was Grand Champion at Farm Fair and at Olds Fall Classic. Not to mention his world renown donor dam is absolutely stunning and has an unbelievable production record. Here is a big time bull that can do a lot for any program.



**SIRE**  
LETHAL WEAPON 63L



**DAM OF SIRE**  
WFL RED SAGE 506C



**W SUNRISE FOLSOM PRISON 177N**

PG1540424 :: TMP 177N :: MARCH 04 2025

CANADIAN SIMMENTAL ASSOCIATION EPD'S

| Act BW | Act WW | Act YW | CE  | BW  | WW   | YW    | Milk | MCE | REA  |
|--------|--------|--------|-----|-----|------|-------|------|-----|------|
| 95     | 740    | 1330   | 7.9 | 1.7 | 87.3 | 131.6 | 19.5 | 3.7 | 1.19 |

MADER WALK THE LINE 92J

WFL WESTCOTT 24C

**MADER FOLSOM PRISON 66L**

**SNIDER'S SARAH BEAN**

MADER VIOLET 49H

SNIDERS SARAH 5W

Here is an exceptional herd bull option. Sound made, good footed and moves extremely well. A bull that is stacked with maternal greatness. His dam has had an absolutely outstanding production record.

**W SUNRISE FOLSOM PRISON 145N**

PG1540425 :: TMP 145N :: FEBRUARY 18 2025

CANADIAN SIMMENTAL ASSOCIATION EPD'S

| Act BW | Act WW | Act YW | CE   | BW  | WW   | YW    | Milk | MCE | REA  |
|--------|--------|--------|------|-----|------|-------|------|-----|------|
| 79     | 630    | 1100   | 12.2 | 0.1 | 73.8 | 112.0 | 17.2 | 5.3 | 0.86 |

MADER WALK THE LINE 92J

LFE STRATTON 3094F

**MADER FOLSOM PRISON 66L**

**W SUNRISE NAOMI 309L**

MADER VIOLET 49H

TER-RON NAOMI 908G

Here is a moderate made, easy travelling bull with great feet. A calving ease bull with added performance and comes from a great cow





**W SUNRISE EASE 10N**

PG1540428 :: TMP 10N :: JANUARY 26 2025

CANADIAN SIMMENTAL ASSOCIATION EPD'S

| Act BW | Act WW | Act YW | CE   | BW   | WW   | YW    | Milk | MCE | REA  |
|--------|--------|--------|------|------|------|-------|------|-----|------|
| 60     | 670    | 1230   | 15.8 | -1.4 | 75.9 | 106.9 | 22.7 | 9.6 | 0.87 |

KWA SLIDER 196H SVS BETTS 808F  
**WBC EASE 6L** **W SUNRISE NAOMI 306L**  
 BLAIR'S RED PARK 851H TER-RON NAOMI 22Z

Here is an absolutely stunning easy calving herd bull. Moderate made with sound structure and tons of maternal value. The blaze face females that this guy will leave will be in high demand. Ease was a bull we used on our heifers with great success.



**W SUNRISE EASE 109N**

PG1540427 :: TMP 109N :: FEBRUARY 06 2025

CANADIAN SIMMENTAL ASSOCIATION EPD'S

| Act BW | Act WW | Act YW | CE   | BW   | WW   | YW    | Milk | MCE | REA  |
|--------|--------|--------|------|------|------|-------|------|-----|------|
| 90     | 740    | 1300   | 13.9 | -0.4 | 82.3 | 116.9 | 23.5 | 7.2 | 0.98 |

KWA SLIDER 196H SVS TYCOON 841F  
**WBC EASE 6L** **W SUNRISE PAIGE 312L**  
 BLAIR'S RED PARK 851H TER-RON PAIGE 907G

Here is a pretty neat here bull coming to you from an outstanding herd bull. Here is one with an attractive profile, extremely sound and nice headed



**W SUNRISE JUSTIFIED 251N**

PG1540960 :: TMP 251N :: MARCH 28 2025

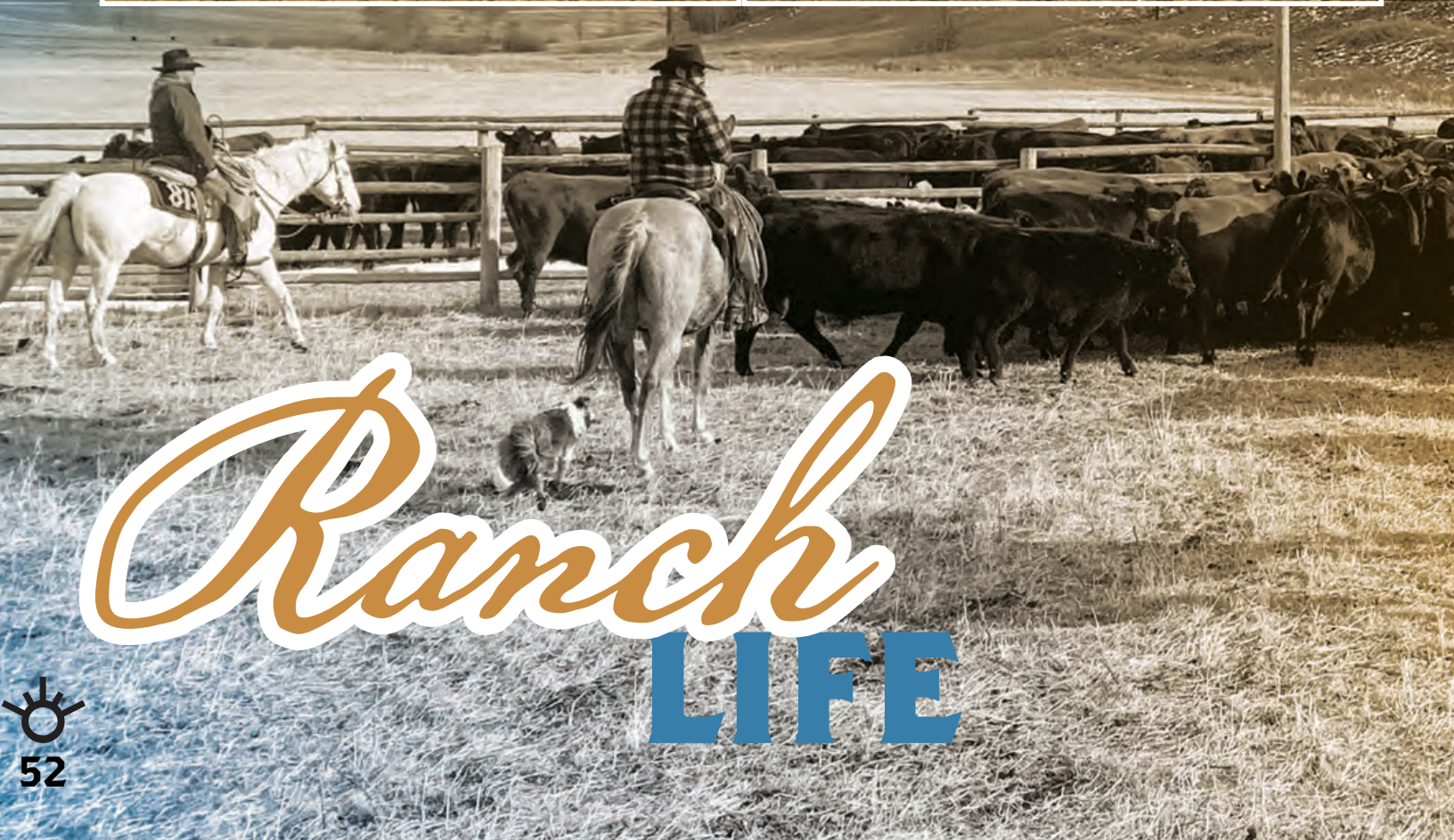
CANADIAN SIMMENTAL ASSOCIATION EPD'S

| Act BW | Act WW | Act YW | CE  | BW  | WW   | YW    | Milk | MCE | REA  |
|--------|--------|--------|-----|-----|------|-------|------|-----|------|
| 85     | 730    | 1250   | 6.3 | 3.2 | 72.0 | 108.7 | 22.5 | 3.6 | 0.84 |

SVS RANCHER 42H LFE HALL PASS 851G  
**SVS JUSTIFIED 62K** **MADER HEATHER 133K**  
 CMS SODA POP 410B MADER HEATHER 158X

Here is a solid red Justified son that comes to you in an easy doing, moderate made, attractive profile. A cool made herd bull that offers a lot of real-world traits. Sound made, free moving herd bull





# Ranch LIFE





**Would like to Thank Jordie** for being the professional photographer here at W Sunrise Angus. For taking such great care of our sale cattle through-out the summer and fall and having them look their absolute best on sale day.



# Notes



RETURN UNDELIVERABLE MAIL TO



# BOHRSON MARKETING SERVICES

28336 TWP RD 320 :: MOUNTAIN VIEW COUNTY, AB :: T4H 4M7

If you wish to stop receiving catalogues from  
BMS, please email [jodi@bohrson.com](mailto:jodi@bohrson.com) or call/text  
403-519-3515 to be removed from the mailing list

