

26TH ANNUAL BONCHUK FARMS BULL SALE



Bonchuk Farms
BULL SALE

WEDNESDAY, APRIL 8, 2026

ON THE FARM, SOLSGIRTH, MB - SALE TIME 1:00 PM

WELCOME TO THE 26TH ANNUAL BULL SALE

Welcome to our 26th Annual Bull Sale. We are excited to host you here at the farm this year! We had the misfortune to lose our calving barn to fire in August, but with our new barn and sale facility, we are very happy to be doing this all at home!

It certainly is very gratifying to see record beef prices across the industry and is certainly a very bright spot for the cow/calf sector. Hats off to all who have stuck with this branch of agriculture and is great to see big rewards for your efforts. The future looks very bright going forward and certainly a lot of excitement in the industry.

We have an exciting group for your consideration. Big rugged two year olds that are ready for heavy service, with a few new sire groups, and the yearlings have come along well and show a lot of promise to sire great quality cattle.

The bulls are available for viewing anytime at the farm and we certainly welcome your visit. If you have any questions give any of us a call or the T Bar C staff, they are familiar with the offering and can assist in any way you need them to.

We hope you are able to join us on April 8, to evaluate our offering and share in our traditional Bonchuk Farms hospitality in our new facility.

Bonchuk Farm Families



BONCHUK FARMS - CONTACT US!

Wayne & Charlene Bonchuk bonchuks@mtns.net

Dave & Marnee Bonchuk bonchuk@goinet.ca / bonchukfarms99@gmail.com
Box 34, Solsgirth, MB R0J 2B0

FROM THE DESK AT T BAR C

Welcome to the 26th annual Bonchuk Farms bull sale on Wednesday, April 8, 2026, being held for the first time in the new barn at the farm, Solsgirth, Manitoba. As a family operation, this event represents far more than a single day—it reflects generations of progression, dedication, hard work, and a deep commitment to the cattle industry.

Bonchuk Farms has grown into one of the largest seedstock operations in the province, built on years of disciplined breeding decisions and an unwavering focus on quality. Their success has not come by chance, but through the development of a strong, productive cow herd—one with the depth and consistency required to support both our annual spring bull sale and fall female event. From Wayne and Charlene to Dave and Marnee, and now the next generation coming along, every part of the operation is shaped by hands-on involvement, working together with a shared passion for raising cattle that perform in real-world conditions for their customers.

They produce bulls that are sound, functional, and built to last, backed by cow families that have proven themselves year after year. Whether your focus is calving ease, growth, maternal strength, or overall profitability, they provide genetics that add value to your operation.

This year's offering is powerful from start to finish. Whether you are looking for Fullblood, Red, Black, or Blaze genetics, the selection is deep and consistent in quality. We encourage you to take your time through the catalogue, as the strength of the offering carries throughout. The two-year-olds are especially impressive—grass raised, not picked over, and developed to go out and cover large groups of cows across all types of terrain. The yearlings are a diverse and exciting group, offering performance, hair, and eye appeal, with genetics suited to a wide range of breeding programs.

In today's strong cattle market, investing in reliable, high-quality herd sires has never been more important. With the value of salvage bulls and the cost of open cows, it simply makes good business sense to upgrade your bull battery with new, young genetics you can count on.

On behalf of everyone at T Bar, we invite you to study the catalogue, visit with the guys about the program, stop by the farm any time prior to sale day to evaluate the offering and see the program firsthand. If you have any questions, don't hesitate to reach out. Plan to be with us to enjoy the famous Bonchuk hospitality and to christen the new barn sale day and always if any of us at T Bar C may be of assistance prior to or on sale day, don't hesitate to call anyone on the team.



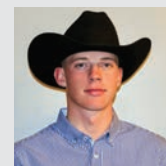
Chris Poley



Shane Michelson



Ben Wright



Levi Rimke

Chris Poley

SALE DAY INFORMATION

SALE DAY PHONES

Dave & Marnee Bonchuk 204-842-3706
or 204-773-0467
Wayne & Charlene Bonchuk 204-796-0004
**or any of the T Bar C sales staff*

SALE STAFF

Auctioneer

Chris Poley 306-220-5006

Ringside

Ben Wright 519-374-3335
Shane Michelson 403-363-9973
Levi Rimke 204-851-4515

SALE MANAGEMENT

T Bar C Cattle Co.

306-933-4200
info@tbarc.com

WATCH & BID ONLINE

www.DLMS.ca

Mark Shologan

CATALOGUE DESIGN

Today's Publishing

306-933-4200
info@todayspublishing.com



INSURANCE

Alameda Agencies

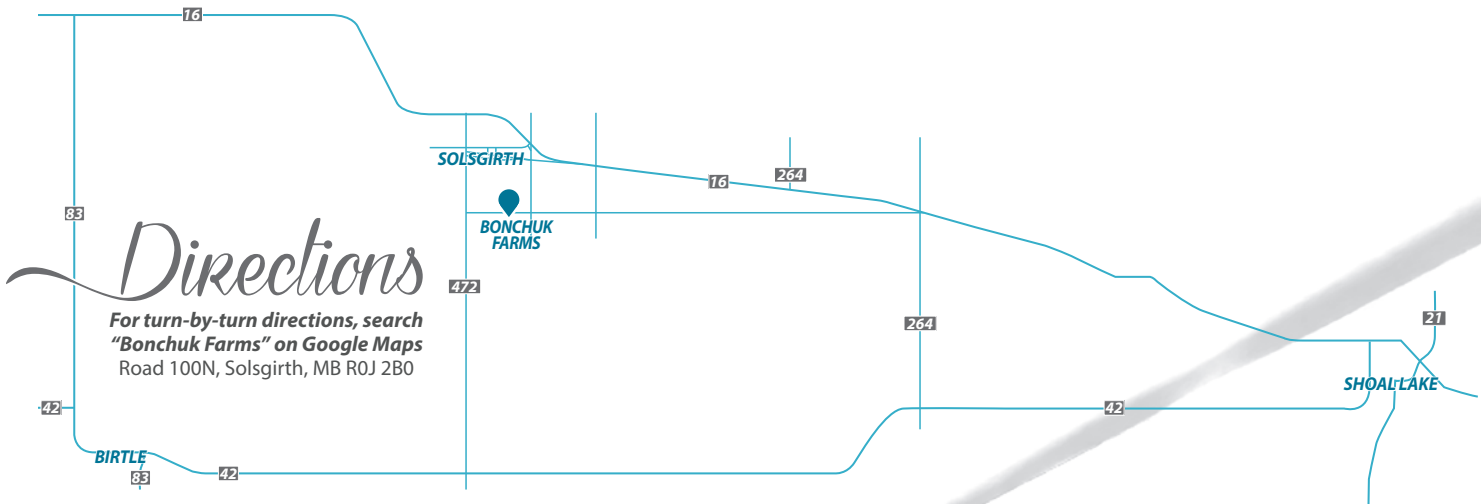
Bonnie Thompson 306-489-2258

View the Catalogue Online:

www.BuyAgro.com

View Videos of the Bulls:

www.BuyAgro.com / www.DLMS.ca



Directions

For turn-by-turn directions, search "Bonchuk Farms" on Google Maps
Road 100N, Solsgirth, MB R0J 2B0

Offering 89 HEAD

RED & BLACK PUREBRED
& FULLBLOOD BULLS

SALE SCHEDULE

Monday - Tuesday:

Cattle will be available for viewing on the farm

11:30 AM

Perogy Lunch

1:00 PM

Bonchuk Farms Bull Sale at the farm, Solsgirth, MB



RED TWO-YEAR-OLDS



HOMO POLLED TEST PENDING.
Moderate framed son of Affinity that should provide calving and high maternal values. Dam is a great young female that has a very solid pedigree.



SIRE Wheatland Affinity 8196F

1 BLCC MR AFFINITY 11M CA-PG1547022 BLCC 11M 11/2/2024 POLLED

CCLT ALLIANCE 91C
WHEATLAND AFFINITY 8196F
WHEATLAND LADY 913W

SKORS BRAVEHEART 289G
BLCC MISS BRAVEHEART 70K
BLCC MISS ROCHFORD 292Y

BWT	WWT	CE	BW	WW	YW	MILK	MCE	MWWT
84 lbs	740 lbs.	8.3	2.7	75.1	104.2	20.7	4.9	58.2

WS PILGRIM H182U
BROOKS SHINIA 1A
GOLDEN OPPORTUNITYHR R851
WHEATLAND LADY 751 T
SVS CAPTAIN MORGAN 11Z
SKORS FANCY THAT 200A
LFE ROCHFORD 3013T
BLCC MISS 55R

A **HETERO POLLED** son of 20M that was purchased in dam from Maxwell Simmentals. 94K is a great young female that we are really impressed with. 20M will provide caving ease, predictability and add the money stripe.



MATERNAL GRANDSIRE
Black Gold Battle 40H

2 BLCC MR 98H 20M CA-PG1546202 BLCC 20M 19/2/2024 HETERO POLLED

MRL NORTHWESTERN 59E
MRL 98H
MRL MISS 8568F

BLACK GOLD BATTLE 40H
NUG KATHRYN 94K
NUG PATTY 52Z

BWT	WWT	CE	BW	WW	YW	MILK	MCE	MWWT
90 lbs	810 lbs	6.9	4.1	72.3	99.9	27.9	4	64.1

IPU RED WESTERN 49X
MRL MISS 5320C
KUNTZ SHERIFF 8A
MRL MISS 836W
NAC BATTLE CRY 4F
BLACK GOLD MS EILEEN 68F
IPU CLASSIC 1X
NUG SIENNA 824U



2 RED TWO-YEAR-OLD BULLS

HOMO POLLED TEST PENDING.

A big bodied long made beef bull that will add pounds, predictability and profit. His dam is a heavy milking cow from a great cow family. He should sire sons that will perform and daughters that will produce.



SIRE Boundary Rio Grande 72J

3 BLCC MR GRANDE 29M
CA-PG1546194 BLCC 29M 10/2/2024 POLLED

RUST RIO GRANDE 7022 ET
BOUNDARY RIO GRANDE 72J
BOUNDARY REGGIE 232F

KOP CROSBY 137W
BLCC MISS CROSBY 285E
KOP MS TOUCHDOWN 170U

WFL WESTCOTT 24C
RF CERTAINLY FLIRTIN 202Z
BOUNDARY ESQUIRE 6C
BOUNDARY REGGIE 57B
MUIRHEAD LIVE WIRE 95R
KOP MS BENGIE 6P
IPU RED TOUCHDOWN 32S
KOP MS FREIGHTLINER 119S

BWT	WWT	CE	BW	WW	YW	MILK	MCE	MWWT
94 lbs	825 lbs	2.8	5.6	78.7	116	21.9	1.6	61.3

4 BLCC MR ENERGY 50M
CA-PG1500854 BLCC 50M 26/2/2024 POLLED

SVS BETTS 808F
MADER BIG ENERGY 97J
IRCC DARLIN' 613D

LFE BLACK RIDGELINE 536W
BLCC MISS RIDGELINE 8D
ACS BLACK MERCEDES 818U

BGS/BM CAPTAIN SCREAM 63D
WFL RED SAGE 506C
MR HOC BROKER
DESTINY ODIN SHEA
LFE MR LEWIS 462P
LFE RS FIRSTBASE 29S
TNT DYNAMITE BLACK L137
HAAS RANCH G217

BWT	WWT	CE	BW	WW	YW	MILK	MCE	MWWT
96 lbs	820 lbs	3	5.1	88.3	130.3	19.9	2.4	64.1



HOMO POLLED TEST PENDING.

A long-bodied son of Big Energy that will be a sire of high performing offspring and his daughters will be second to none. 8D has an impeccable pedigree with some tremendous producers anchoring this great bull.



SIRE Mader Big Energy 97J



5 **BLCC MR GRANDE 55M**
 CA-PG1500834 BLCC 55M 26/2/2024 POLLED

RUST RIO GRANDE 7022 ET
BOUNDARY RIO GRANDE 72J
 BOUNDARY REGGIE 232F

KWA RED ROCK 5T
BLCC MISS RED ROCK 214B
 BLCC MISS PORSCHE 66Y

WFL WESTCOTT 24C
 RF CERTAINLY FLIRTIN 202Z
 BOUNDARY ESQUIRE 6C
 BOUNDARY REGGIE 57B
 DAY RED PEPPER DOC 984R
 KWA MS ROCK 7P
 VIRGINIA'S PORSCHE 64P
 IPU 4G MS KLYBER 54L

BWT	WWT	CE	BW	WW	YW	MILK	MCE	MWWT
96 lbs	780 lbs	3	5.2	76.6	117.4	23.3	0.8	61.6

HOMO POLLED TEST PENDING.

Long, deep, and beefy. A stout two-year-old ready to go to work. He should sire some high performing steers and his daughters should be very productive. The Red Rock daughters have been very consistent in production and 214B is a great uddered cow.



PATERNAL GRANDSIRE Rust Rio Grande 7022 ET

4 RED TWO-YEAR-OLD BULLS

THIS GUY IS MADE WITH
POWER & PERFORMANCE
Built-in

HOMO POLLED TEST PENDING.

This Legal Cusstody son will sire some great performing offspring and is anchored by an excellent producing cow family. A stout 2-year-old ready to go to work.



SIRE Sun Rise Legal Cusstody 28H

6 BLCC MR CUSTODY 77M
CA-PG1546196 BLCC 77M 28/2/2024 POLLED

SPRINGCREEK DRIVER 135Z
SUN RISE LEGAL CUSTODY 28H
SPRINGCREEK BROOKE 68Z

KOP PONDEROSA 144Y
BLCC MISS PONDEROSA 72D
BLCC MISS ROCHFORD 68Z

SPRINGCREEK LINER 104S
SPRINGCREEK BK STORMY 61T
KOP CROSBY 137W
SPRINGCREEK BROOKE 11W
CMS TRADEMARK 756T
KOP MS BENGIE 6P
LFE ROCHFORD 3013T
BLCC MISS RED 277T

BWT	WWT	CE	BW	WW	YW	MILK	MCE	MWWT
92 lbs	790 lbs	6	4.2	81.8	121.3	27.6	4.8	68.5

7 RJB MR CROCKET 79M
PENDING RJB 79M 28/2/2024 POLLED

LBR CROCKET R81
BLCC MR CROCKET 218J
BLCC MISS DEALER 200D

KOP PONDEROSA 144Y
ADBS MISS PONDEROSA 213E
ADBS MISS 99U 370X

KENCO/MF POWERLINE 204L
LBR NIGHT DREAM M22
ERIXON DEALER 63Z
BLCC MISS POWERLINE 182W
CMS TRADEMARK 756T
KOP MS BENGIE 6P
BLCC MR FIVE STAR 99U
ADBS MISS TEDDY 332U

BWT	WWT	CE	BW	WW	YW	MILK	MCE	MWWT
94 lbs	770 lbs	0.7	6.5	81.9	122.9	25.9	1.3	66.9



HOMO POLLED TEST PENDING.

A great performing Crockett son that will inject some power, performance and predictability into his calves and his daughters will be producers. 213E is a heavy milking female that gets it done.



MATERNAL SISTER
RJB Miss Braveheart 69L



8 **BLCC MR TYCOON 102M**
 PENDING BLCC 102M 2/3/2024 POLLED

SVS BROOKS 669D
SVS TYCOON 841F
 SVS RED ANNIE 411B

R PLUS RELOAD 2006Z
WFL RED SAGE 506C
 FL RED SAGE 1003Y

MRL RED WHISKEY 101B
 SVS RED SARA 92X
 ACS EVERREADY 970W
 3D MISS RED NOREMAC 211U
 R PLUS HARD ROCK 145X
 IPU RED BARONESS 1T
 R PLUS REDGE 8018U
 3D MISS SAGE 140 W

BWT	WWT	CE	BW	WW	YW	MILK	MCE	MWWT
92 lbs	810 lbs	6.4	3.36	92.7	132.3	27.9	5.8	74.2

HOMO POLLED BY PEDIGREE.

A great well-made son of Tycoon and the great donor 506C, who has his own page in the Simmental world. Loads of eye appeal, great temperament, performance and predictability.

AN EYE-OPENING &

PROVEN
Pedigree



DAM
 WFL Red Sage 506C



SIRE SVS Tycoon 841F

HOMO POLLED TEST PENDING.

A long bodied, big quartered bull that should do a great job at siring some high performing progeny. 212E has been an exceptional producer and is always consistent.



SIRE Wheatland Bull 921G

9 RJB MR DESIRE 127M
CA-PG1546218 RJB 127M 5/3/2024 POLLED

BCLR AMBITION E301
WHEATLAND BULL 921G
WHEATLAND LADY 6554D

KOP PONDEROSA 144Y
ADBS MISS PONDEROSA 212E
ADBS MISS 99U 370X

CDI AMBITION 255C
BCLR MISS AUTHORITY A301
WHEATLAND CIRCUIT BREAKER
WHEATLAND LADY 4242B
CMS TRADEMARK 756T
KOP MS BENGIE 6P
BLCC MR FIVE STAR 99U
ADBS MISS TEDDY 332U

BWT	WWT	CE	BW	WW	YW	MILK	MCE	MWWT
92 lbs	765 lbs	5.4	3.5	77.3	109.3	29	3	67.7

10 BLCC MR DESIRE 129M
CA-PG1546217 BLCC 129M 5/3/2024 POLLED

BCLR AMBITION E301
WHEATLAND BULL 921G
WHEATLAND LADY 6554D

SPRINGCREEKWALLBANGER 11Z
BLCC MISS WALLBANGER 132C
BLCC MISS SIXES 126U

CDI AMBITION 255C
BCLR MISS AUTHORITY A301
WHEATLAND CIRCUIT BREAKER
WHEATLAND LADY 4242B
HARVIE JDF WALLBANGER111X
SPRINGCREEK LINNE 72S
BHR THREE SIXES SA L666E
BLCC MISS JASPER 279S

BWT	WWT	CE	BW	WW	YW	MILK	MCE	MWWT
90 lbs	766 lbs	5.5	3.6	79.6	116.1	29.3	1.2	69.1



HOMO POLLED TEST PENDING.

A dark red, long bodied bull ready for heavy service. 129M has eye appeal, performance and is backed by a big volume, heavy milking female



11 BLCC MR ENERGY 133M

CA-PRS1501961 BLCC 133M 6/3/2024 POLLED

SVS BETTS 808F
MADER BIG ENERGY 97J
 IRCC DARLIN' 613D

WS STEPPING STONE B44
BLCC MISS STEPPING STONE 236J
 BLCC MISS EDGE 45G

BGS/BM CAPTAIN SCREAM 63D
 WFL RED SAGE 506C
 MR HOC BROKER
 DESTINY ODIN SHEA
 W/C LOCK DOWN 206Z
 WS MS UPGRADE Z15
 MICH WHEATLAND BULL 7147E
 BLCC MISS BLACKSTING 117Z

BWT	WWT	CE	BW	WW	YW	MILK	MCE	MWWT
104 lbs	790 lbs	0.1	6.1	95.8	145.1	22.6	1.4	70.5

HOMO POLLED TEST PENDING.

A power house blaze faced son of Big Energy that has commanded a lot of attention. Tremendous thickness, width of top and eye appeal. He will sire great performance, do-ability and eye appeal into all his progeny.

8 RED TWO-YEAR-OLD BULLS



SIRE BLCC Mr Crockett 218J

12 BLCC MR CROCKETT 135M

CA-PG1546205 BLCC 135M 6/3/2024 POLLED

LBR CROCKET R81
BLCC MR CROCKET 218J
 BLCC MISS DEALER 200D

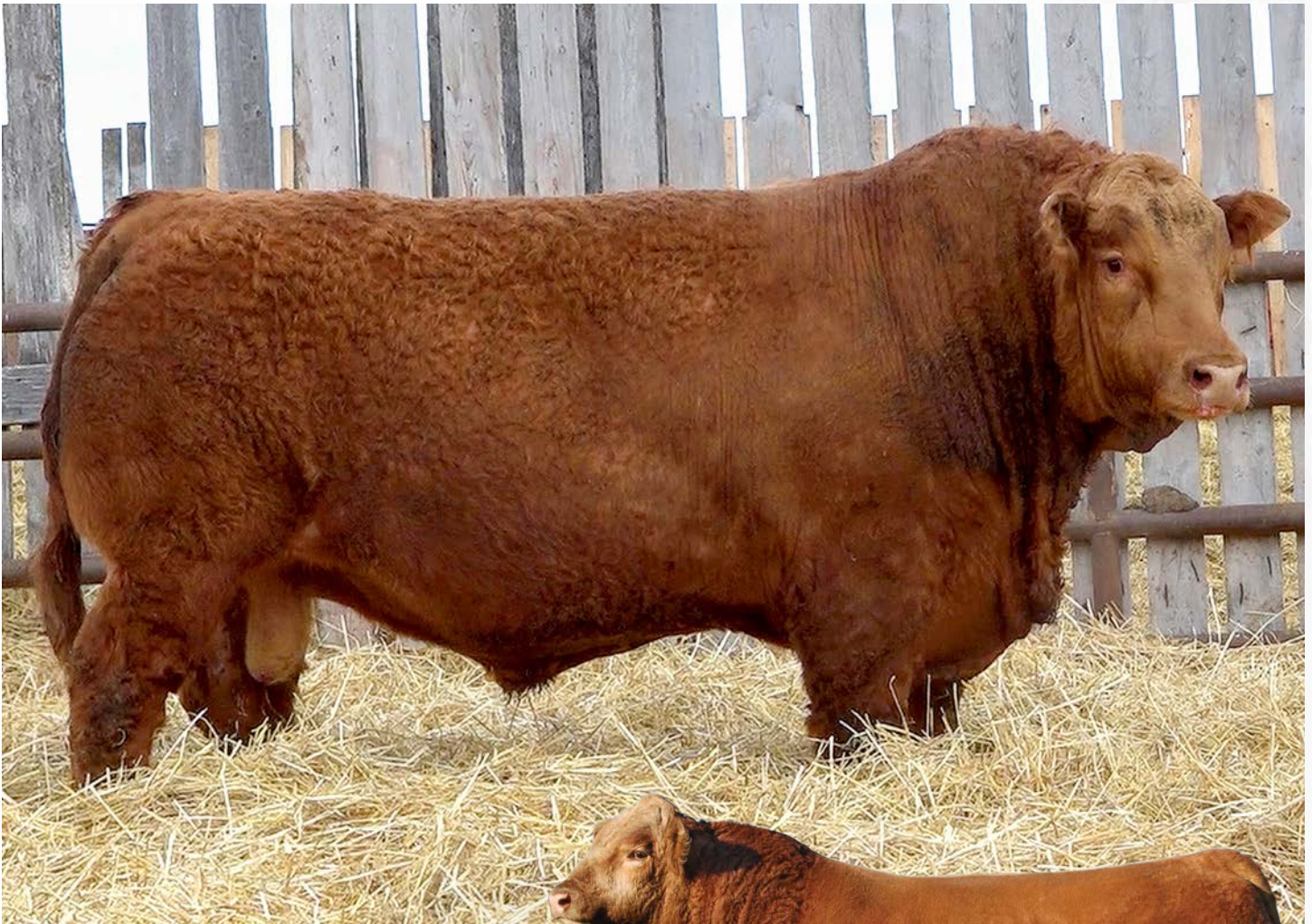
KENCO/MF POWERLINE 204L
BLCC MISS BLACK POWER198W
 TNT MISS AMERICANA E55

KENCO/MF POWERLINE 204L
 LBR NIGHT DREAM M22
 ERIXON DEALER 63Z
 BLCC MISS POWERLINE 182W
 HC POWER DRIVE 88H
 SAFN GLAMOUR 11J
 ER AMERICANA 537B
 HH HAPPY VELVET P091E

BWT	WWT	CE	BW	WW	YW	MILK	MCE	MWWT
94 lbs	745 lbs	4.2	5	69.9	104.1	24.5	2.9	59.5

HOMO POLLED TEST PENDING.

A dark red Crockett son that will be a great producer of quality females. The cow family he comes from will be one of our very best. Big topped, long bodied and ready to go to work.



13 **BLCC MR CROCKETT 144M**
 CA-PG1500849 BLCC 144M 9/3/2024 POLLED

LBR CROCKET R81
BLCC MR CROCKET 218J
 BLCC MISS DEALER 200D

KUNTZ SHERIFF 8A
BLCC MISS SHERIFF 24E
 BLCC MISS PONDEROSA 55C

KENCO/MF POWERLINE 204L
 LBR NIGHT DREAM M22
 ERIXON DEALER 63Z
 BLCC MISS POWERLINE 182W
 KUNTZ MARSHALL 12Y
 PEACOCK'S LI'L NETTIE 23Y
 KOP PONDEROSA 144Y
 BLCC MISS ROCHFORT 106Y

BWT	WWT	CE	BW	WW	YW	MILK	MCE	MWWT
88 lbs	745 lbs	6.7	3.3	79.8	121.2	26.4	4.3	66.3

HOMO POLLED TEST PENDING.
 A beefy, great tempered bull with tremendous thickness, capacity and haircoat. Full of eye appeal and commands to be noticed. The dam is an elite female that we are really high on. 144M will put pounds and predictability in your herd and dollars in your pocket.



MATERNAL GRANDSIRE
 Kuntz Sheriff 8A

A TREMENDOUS BULL WITH A
COMMANDING PRESENCE
Herdbull Material



14 BLCC MR ENERGY 148M

CA-PG1500839 BLCC 148M 9/3/2024 POLLED

SVS BETTS 808F
MADER BIG ENERGY 97J
 IRCC DARLIN' 613D

JPCC MR LINER 75B
BLCC MISS LINER 110H
 BLCC MISS POWERLINE 160T

BGS/BM CAPTAIN SCREAM 63D
 WFL RED SAGE 506C
 MR HOC BROKER
 DESTINY ODIN SHEA
 SPRINGCREEK LINER 56U
 DRAKE TULA 1R
 KENCO/MF POWERLINE 204L
 BLCC MISS 116N

BWT	WWT	CE	BW	WW	YW	MILK	MCE	MWWT
96 lbs	748 lbs	2.6	5.2	86.8	130.5	23.9	2.9	67.3



SIRE
 Mader Big Energy 97J

HOMO POLLED TEST PENDING.

An extremely long bodied beef bull that will add pounds, style and sire some outstanding progeny. 148M is a high performing Big Energy son that is mothered by a hard-working female that is maternally sound. Lots of predictability and ready to go to work.



MATERNAL GRANDSIRE JPCC Mr Liner 75B

HOMO POLLED TEST PENDING.

A thick made son of Legal Cusstody that will sire some great steers that will be sought after every fall. Lots of depth of quarter, width of top and should sire some great offspring.



MATERNAL GRANDSIRE
Kuntz Sheriff 8A

15 BLCC MR CUSSTODY 156M
CA-PG1546212 BLCC 156M 10/3/2024 POLLED

SPRINGCREEK DRIVER 135Z
SUN RISE LEGAL CUSSTODY 28H
SPRINGCREEK BROOKE 68Z

KUNTZ SHERIFF 8A
BLCC MISS SHERIFF 107G
BLCC MISS SL DEALER 242E

SPRINGCREEK LINER 104S
SPRINGCREEK BK STORMY 61T
KOP CROSBY 137W
SPRINGCREEK BROOKE 11W
KUNTZ MARSHALL 12Y
PEACOCK'S LI'L NETTIE 23Y
SILVER LAKE DEALER 60B
BLCC MISS BARONESS 133Z

BWT	WWT	CE	BW	WW	YW	MILK	MCE	MWWT
96 lbs	755 lbs	7.7	2.7	78.2	115.5	30.1	4.4	69.2

16 BLCC MR CUSSTODY 169M
CA-PG1546195 BLCC 169M 13/3/2024 POLLED

SPRINGCREEK DRIVER 135Z
SUN RISE LEGAL CUSSTODY 28H
SPRINGCREEK BROOKE 68Z

R PLUS 5015C
BLCC MISS 5015C 70G
BLCC MISS PONDEROSA 307B

SPRINGCREEK LINER 104S
SPRINGCREEK BK STORMY 61T
KOP CROSBY 137W
SPRINGCREEK BROOKE 11W
WFL ABSOLUTE 51Y
IPU MS. 56U LINER 15A
KOP PONDEROSA 144Y
BLCC MISS ROCHFORT 82X

BWT	WWT	CE	BW	WW	YW	MILK	MCE	MWWT
94 lbs	755 lbs	6.8	3.7	89.1	135	24.8	4.3	69.4



HOMO POLLED TEST PENDING.

A deep sided beef bull that should sire performance, do ability and eye appeal. Add in some great maternal and certainly will do a great job on a set of steers and powerful daughters.



MATERNAL GRANDSIRE
R Plus 5015C



HOMO POLLED TEST PENDING.
 A beef bull that has depth of quarter, great topline and capacity and will sire an excellent group of steer calves that will package up really nice. 230H has been a consistent female that gets it done.



MATERNAL GRANDSIRE
 W Epic E152

17 BLCC MR CUSSTODY 182M
 CA-PG1546215 BLCC 182M 17/3/2024 POLLED

SPRINGCREEK DRIVER 135Z
SUN RISE LEGAL CUSSTODY 28H
 SPRINGCREEK BROOKE 68Z

WS EPIC E152
BLCC MISS EPIC 230H
 BLCC MISS RED ROCK 326F

SPRINGCREEK LINER 104S
 SPRINGCREEK BK STORMY 61T
 KOP CROSBY 137W
 SPRINGCREEK BROOKE 11W
 WS ALL ABOARD B80
 WS MAJESTIC Z133
 KWA RED ROCK 5T
 BLCC MISS CROSBY 335C

BWT	WWT	CE	BW	WW	YW	MILK	MCE	MWWT
96 lbs	745 lbs	8.4	2.4	86.2	128.7	26.5	5.9	69.6

18 BLCC MR BRAVEHEART 187M
 CA-PG1546221 BLCC 187M 17/3/2024 POLLED

SVS CAPTAIN MORGAN 11Z
SKORS BRAVEHEART 289G
 SKORS FANCY THAT 200A

KWA RED ROCK 5T
BLCC MISS ROCK 5X
 BLCC MISS RED 395U

HARVIE JDF WALLBANGER111X
 SUNNYVALLEY BLK JENNA 88U
 LBR CROCKET R81
 SKORS MS DREAM ON 103T
 DAY RED PEPPER DOC 984R
 KWA MS ROCK 7P
 LAZY S BLACK 823P
 BLCC MISS 180P

BWT	WWT	CE	BW	WW	YW	MILK	MCE	MWWT
94 lbs	710 lbs	7	3.6	82.8	124	22.7	4.6	64.1

HOMO POLLED TEST PENDING.
 A long spined Braveheart son that will add length, pounds and strong maternal. His dam is an excellent uddered female that milks extremely well and has raised some great progeny. 187M will do a great job, siring eye appeal with performance.



12 RED TWO-YEAR-OLD BULLS



SIRE SKORS Braveheart 289G

HOMO POLLED TEST PENDING.

A low birthweight Affinity son that would add calving ease and strong maternal. If you have a big bunch of heifers to breed, 190M could be a great choice. He will be an all around herdsire, and is ready for work.



SIRE Wheatland Affinity 8196F

19 BLCC MR AFFINITY 190M
CA-PG1547023 BLCC 190M 19/3/2024 POLLED

CCLT ALLIANCE 91C
WHEATLAND AFFINITY 8196F
WHEATLAND LADY 913W

SKORS BRAVEHEART 289G
BLCC MISS BRAVEHEART 71K
BLCC MISS ROCHFORT 292Y

WS PILGRIM H182U
BROOKS SHINIA 1A
GOLDEN OPPORTUNITYHR R851
WHEATLAND LADY 751 T
SVS CAPTAIN MORGAN 11Z
SKORS FANCY THAT 200A
LFE ROCHFORT 3013T
BLCC MISS 55R

BWT	WWT	CE	BW	WW	YW	MILK	MCE	MWWT
82 lbs	812 lbs	8.3	2.7	75.1	104.2	20.7	4.9	58.2

20 BLCC MR GRANDE 200M
CA-PG1546197 BLCC 200M 19/3/2024 POLLED

RUST RIO GRANDE 7022 ET
BOUNDARY RIO GRANDE 72J
BOUNDARY REGGIE 232F

KWA LAW MAKER 59C
NUG JESSABELLE 232J
SPRINGCREEK BROOKE 68Z

WFL WESTCOTT 24C
RF CERTAINLY FLIRTIN 202Z
BOUNDARY ESQUIRE 6C
BOUNDARY REGGIE 57B
CDI AUTHORITY 77X
KWA MS ROCK 14X
KOP CROSBY 137W
SPRINGCREEK BROOKE 11W

BWT	WWT	CE	BW	WW	YW	MILK	MCE	MWWT
94 lbs	680 lbs	3.4	4.9	78.4	125	26.4	1.5	65.6



20

HOMO POLLED TEST PENDING.

Wide topped, deep quartered very big bodied beef bull. 200M has the ability to sire a great group of calves that will convert grass to beef and look great while doing it. The dam has been a great purchase for us and has a great pedigree. 200M will sire some great bull calves and his daughters should be excellent.



MATERNAL GRANDSIRE
KWA Law Maker 59C



21 BLCC MR BRAVEHEART 202M

CA-PG1500845 BLCC 202M 22/3/2024 POLLED

SVS CAPTAIN MORGAN 11Z
SKORS BRAVEHEART 289G
 SKORS FANCY THAT 200A

WHEATLAND KILL SWITCH
BLCC MISS KILLSWITCH 127E
 BLCC MISS ROCK 273Y

HARVIE JDF WALLBANGER111X
 SUNNYVALLEY BLK JENNA 88U
 LBR CROCKET R81
 SKORS MS DREAM ON 103T
 WHEATLAND CIRCUIT BREAKER
 HR/RR MS CANDACE T73
 KWA RED ROCK 5T
 BLCC MISS RED 284T

BWT	WWT	CE	BW	WW	YW	MILK	MCE	MWWT
94 lbs	720 lbs	6.6	3.7	83.1	125.2	25.5	4	67.1

HOMO POLLED TEST PENDING.

A tremendous herdsire in the making with a ton of predictability bred into him. Sired by Braveheart, who did such a great job of siring great sons and daughters for us, and mothered by a tremendous female that comes from our flush cow, she is also the dam to one of the herd sires we are using. 202M boasts eye appeal, tremendous thickness, great hair coat and will be a front pasture herd bull.

14 RED TWO-YEAR-OLD BULLS



22 BLCC MR CROCKETT 211M

CA-PG1546204 BLCC 211M 23/3/2024 POLLED

LBR CROCKET R81
BLCC MR CROCKET 218J
 BLCC MISS DEALER 200D

LFE BS LEWIS 322U
BLCC MISS STUBBY 152C
 BLCC MISS ROCHFORD 108X

KENCO/MF POWERLINE 204L
 LBR NIGHT DREAM M22
 ERIXON DEALER 63Z
 BLCC MISS POWERLINE 182W
 R PLUS BLACKEDGE
 LFE BS MS ARNOLD 135S
 LFE ROCHFORD 3013T
 BLCC MISS RED 277T

BWT	WWT	CE	BW	WW	YW	MILK	MCE	MWWT
92 lbs	640 lbs	2.5	6.3	83.4	125.4	21.3	0.8	63

HOMO POLLED TEST PENDING.

A wide topped Crockett son that will do a great job at siring uniformity and have some longevity built into his being. 152C was a heavy milking cow that had a great production record. 211 M is ready for heavy service



23 **BLCC MR STORM 220M**
 CA-PG1546216 BLCC 220M 26/4/2024 POLLED

SVS TYCOON 841F
SUNNY VALLEY STORM 56K
 SUNNY VALLEY DESIRE 13C

MAPLE LAKE 6666
BLCC MISS SWAGGER 251F
 BLCC MISS ENTICER 39B

SVS BROOKS 669D
 SVS RED ANNIE 411B
 SVS CAPTAIN MORGAN 11Z
 RDD MS SHEAR DESIRE 4X
 WHEATLAND SWAGGER 343A
 MAPLE LAKE 3266
 SKORS RED ENTICER 48Z
 KOP MS TRACKER 192W

BWT	WWT	CE	BW	WW	YW	MILK	MCE	MWWT
92 lbs	690 lbs	4.9	3.8	85.1	126.2	24.9	4.6	67.4

HOMO POLLED TEST PENDING.

A non-diluter son of Storm that comes from a fantastic cow family. Years and years of quality production passed down for generations. 220M has length, width, capacity and eye appeal. All the positive traits this cow family is known for.



SIRE Sunny Valley Storm 56K



MATERNAL GRANDSIRE
 Maple Lake 6666



HOMO POLLED TEST PENDING.
 A calving ease prospect by Affinity that will work wonders on a group of heifers and provide calving ease, vigor, eye appeal and growth.



MATERNAL GRANDSIRE
 Wheatland Bull 921G

24 BLCC MR AFFINITY 239M
 CA-PG1546201 BLCC 239M 10/4/2024 POLLED

CCLT ALLIANCE 91C
WHEATLAND AFFINITY 8196F
 WHEATLAND LADY 913W

WHEATLAND BULL 921G
BLCC MISS DESIRE 362K
 TWIN BRAE GOLDIE 944G

WS PILGRIM H182U
 BROOKS SHINIA 1A
 GOLDEN OPPORTUNITYHR R851
 WHEATLAND LADY 751 T
 BCLR AMBITION E301
 WHEATLAND LADY 6554D
 MRL CAPONE 130B
 TWIN BRAE DAINTY 644D

BWT	WWT	CE	BW	WW	YW	MILK	MCE	MWWT
82 lbs	615 lbs	9.2	1.9	72.2	95.9	22.6	4.7	58.7

25 BLCC MR GRANDE 250M
 CA-PG1546198 BLCC 250M 30/3/2024 POLLED

RUST RIO GRANDE 7022 ET
BOUNDARY RIO GRANDE 72J
 BOUNDARY REGGIE 232F

R PLUS HITMAN 4194B
BLCC MISS HITMAN 151J
 BLCC MISS RED ROCK 310Y

WFL WESTCOTT 24C
 RF CERTAINLY FLIRTIN 202Z
 BOUNDARY ESQUIRE 6C
 BOUNDARY REGGIE 57B
 R PLUS RELOAD 2006Z
 MISS R PLUS 79X
 KWA RED ROCK 5T
 BLCC MISS TEDDY 13U

BWT	WWT	CE	BW	WW	YW	MILK	MCE	MWWT
90 lbs	670 lbs	2.6	5.4	80.8	123.6	19	0.7	59.4

HOMO POLLED TEST PENDING.
 Length for days combined with eye appeal and performance best describes this bull. He will add performance to a group of steers that will make the order buyers smile.



16 RED TWO-YEAR-OLD BULLS



SIRE Boundary Rio Grande 72J

HOMO POLLED TEST PENDING.
 These Crockett sons have been an impressive group and 251M is the same. He will add length and muscle and should sire some amazing females.



26 BLCC MR CROCKETT 251M
 CA-PG1546199 BLCC 251M 1/4/2024 POLLED

LBR CROCKET R81
BLCC MR CROCKET 218J
 BLCC MISS DEALER 200D

KWA RED ROCK 5T
BLCC MISS RED ROCK 346D
 DCSF MS RED ZEPHYR 28Z

KENCO/MF POWERLINE 204L
 LBR NIGHT DREAM M22
 ERIXON DEALER 63Z
 BLCC MISS POWERLINE 182W
 DAY RED PEPPER DOC 984R
 KWA MS ROCK 7P
 IPU ACCELERATOR 12W
 DCSF RED LADY SASSIE 12S

BWT	WWT	CE	BW	WW	YW	MILK	MCE	MWWT
90 lbs	625 lbs	4.1	5	78.6	118.9	23.5	3.9	62.8

27 BLCC MR CUSSTODY 252M
 CA-PG1546203 BLCC 252M 2/4/2024 POLLED

SPRINGCREEK DRIVER 135Z
SUN RISE LEGAL CUSSTODY 28H
 SPRINGCREEK BROOKE 68Z

KOP PONDEROSA 144Y
BLCC MISS PONDEROSA 47D
 BLCC MISS SLEDGE 198A

SPRINGCREEK LINER 104S
 SPRINGCREEK BK STORMY 61T
 KOP CROSBY 137W
 SPRINGCREEK BROOKE 11W
 CMS TRADEMARK 756T
 KOP MS BENGIE 6P
 R PLUS 110X
 BLCC MISS RED ROCK 38W

BWT	WWT	CE	BW	WW	YW	MILK	MCE	MWWT
98 lbs	665 lbs	5.4	4.4	83.1	121.5	27.8	4.6	69.4



HOMO POLLED TEST PENDING.
 A deep sided beef bull that will sire an amazing set of steers that will make the order buyers take notice. Lots of muscle and full of capacity.



28 **BLCC MR CUSSTODY 253M**

CA-PG1546213 BLCC 253M 1/4/2024 POLLED

SPRINGCREEK DRIVER 135Z
SUN RISE LEGAL CUSSTODY 28H
 SPRINGCREEK BROOKE 68Z

WHEATLAND REVENUE 677D
BLCC MISS REVENUE 93H
 KOP MS TRACKER 213X

SPRINGCREEK LINER 104S
 SPRINGCREEK BK STORMY 61T
 KOP CROSBY 137W
 SPRINGCREEK BROOKE 11W
 PROFIT
 WHEATLAND LADY 935W
 CG TRACKER 45T
 KOP MS BENGIE 125S

BWT	WWT	CE	BW	WW	YW	MILK	MCE	MWWT
94 lbs	705 lbs	5.2	4.1	80	118.3	28.5	4	68.5



MATERNAL GRANDSIRE
 Wheatland Revenue 677D

HOMO POLLED TEST PENDING.

A two-year-old we are very excited about. Definitely one of the top in the pen. Very wide in his base, wide across the top, full of muscle and capacity and backed by a superior cow family. Sired by Cusstody and backed by a great female that gets it done and comes from our flush program 253M will sire quality sons and his daughters will be producers.

A PROMISING
HERDSIRE
Prospect



SIRE Sun Rise Legal Cusstody 28H

HOMO POLLED TEST PENDING.

A Braveheart son that will add length, performance and style. Wide across his top and a great hind quarter. 293B is a heavy milking female that continues to produce very well.



PATERNAL GRANDSIRE
SVS Captain Morgan 11Z

29 BLCC MR BRAVEHEART 254M
CA-PG1546214 BLCC 254M 1/4/2024 POLLED

SVS CAPTAIN MORGAN 11Z
SKORS BRAVEHEART 289G
SKORS FANCY THAT 200A

LFE BS LEWIS 322U
BLCC MISS STUBBY 293B
BLCC MISS 55R

HARVIE JDF WALLBANGER 111X
SUNNYVALLEY BLK JENNA 88U
LBR CROCKET R81
SKORS MS DREAM ON 103T
R PLUS BLACKEDGE
LFE BS MS ARNOLD 135S
HOOK'S RED QUORUM 55H
BLCC MISS 128N

BWT	WWT	CE	BW	WW	YW	MILK	MCE	MWWT
92 lbs	655 lbs	4.5	4.8	81.8	119.9	22.6	1.8	63.5



4-H Fundraiser

TO RAISE FUNDS FOR THE
FOXWARREN-SOLSGIRTH 4-H BEEF CLUB
BONCHUK FARMS WILL BE HOSTING A

PIE AUCTION

RED YEARLINGS



30 BLCC MR ENERGY 12N

CA-PG1546299 BLCC12N 13/1/2025 POLLED

SVS BETTS 808F
MADER BIG ENERGY 97J
 IRCC DARLIN' 613D

KENCO/MF POWERLINE 204L
BLCC MISS POWERLINE 182W
 TNT MISS AMERICANA E55

BGS/BM CAPTAIN SCREAM 63D
 WFL RED SAGE 506C
 MR HOC BROKER
 DESTINY ODIN SHEA
 HC POWER DRIVE 88H
 SAFN GLAMOUR 11J
 ER AMERICANA 537B
 HH HAPPY VELVET P091E

BWT	WWT	CE	BW	WW	YW	MILK	MCE	MWWT
94 lbs	825 lbs.	1.1	6.3	86.3	125.7	22.7	1.5	65.9



SIRE

Mader Big Energy 97J

HOMO POLLED TEST PENDING.

An outstanding, big volume, solid sired Big Energy son from our donor cow 182W. 12N boasts incredible volume, muscle shape, has an excellent temperament and will sire some performance and will produce some awesome females. The E55 influence in the back ground make this yearling a sure thing.

AN

OUTSTANDING
& Voluminous
 HERDSIRE



Steve

MATERNAL GRANDSIRE Kenco/MF Powerline 204L



31 **BLCC MR MAVERICK 39N**
 CA-PG1547025 BLCC39N 3/2/2025 POLLED

SPRINGCREEK MAVERICK 48H
SUNNY VALLEY MAVERICK 8L
 SUNNY VALLEY RED STAR 32J

KWA RED ROCK 5T
BLCC MISS RED ROCK 116C
 BLCC MISS PORCHE 437X

SBSF EASTWOOD 22E
 SPRINGCREEK RIVAL 127F
 SVS BOND 973G \ HP-HOP
 MAF TWISTED STAR 66A
 DAY RED PEPPER DOC 984R
 KWA MS ROCK 7P
 VIRGINIA'S PORSCHE 64P
 BLCC MISS KAMRYN 35K

BWT	WWT	CE	BW	WW	YW	MILK	MCE	MWWT
89 lbs	780 lbs.	9.4	2.7	81.8	120.1	24.2	6.4	65.1



SIRE
 Sunny Valley Maverick 8L

HOMO POLLED TEST PENDING.

Sired by our newest red calving ease bull. 39N should do a great job on a group of yearling heifers and provide ample calving ease, eye appeal and give his progeny a great start. We really liked Maverick's ability to provide calving ease without sacrificing performance. 116C is a great female we are expecting great things from.

AN EYE-APPEALING
CALVING EASE
Specialist



MATERNAL GRANDSIRE KWA Red Rock 5T



HOMO POLLED TEST PENDING.
 A long bodied **NON DILUTOR** son of Storm that will mature to be a quality herdsire. Lots of muscle expression, capacity and eye appeal. 243H is a great young female with an excellent udder.



SIRE Sunny Valley Storm 56K

32 BLCC MR STORM 58N
 CA-PG1547027 BLCC 58N 19/2/2025 POLLED

SVS TYCOON 841F
SUNNY VALLEY STORM 56K
 SUNNY VALLEY DESIRE 13C

MAPLE LAKE 6666
BLCC MISS SWAGGER 243H
 BLCC MISS WALLBANGER 364D

SVS BROOKS 669D
 SVS RED ANNIE 411B
 SVS CAPTAIN MORGAN 11Z
 DD MS SHEAR DESIRE 4X
 WHEATLAND SWAGGER 343A
 MAPLE LAKE 3266
 SPRINGCREEKWALLBANGER 11Z
 BLCC MISS STING 267S

BWT	WWT	CE	BW	WW	YW	MILK	MCE	MWWT
94 lbs	780 lbs.	5.2	3.9	85.1	125	23.5	4.4	66

33 BLCC MR JOKER 96N
 CA-PG1546289 BLCC 96N 24/2/2025 POLLED

STARWEST POL BLUEPRINT
CDH MR JOKER 5J
 DOUBLE BAR D 229Z

R PLUS 5015C
BLCC MISS 5015C 14F
 BLCC MISS POWERLINE 160T

ANCHOR "T" RUSTY 59G
 PHS HOMOZYGOUS XCEPTIONAL
 LFS POL BALBOA 40U
 DOUBLE BAR D LOLITA 256X
 WFL ABSOLUTE 51Y
 IPU MS. 56U LINER 15A
 KENCO/MF POWERLINE 204L
 BLCC MISS 116N

BWT	WWT	CE	BW	WW	YW	MILK	MCE	MWWT
92 lbs	785 lbs	11.6	3.1	73.5	104.4	29.1	4.7	65.9

HOMO POLLED TEST PENDING.
 A dark red son of the great 14F cow that has some Fleckvieh influence. 96N certainly looks the part and will add performance, eye appeal, and predictability. A full brother sold in last years sale.



22 RED YEARLING BULLS



MATERNAL GRANDSIRE
 R Plus 5015C



34

BLCC MR CROCKETT 100N

CA-PG1546297 BLCC 100N 24/2/2025 POLLED

LBR CROCKET R81
BLCC MR CROCKET 218J
 BLCC MISS DEALER 200D

KWA RED ROCK 5T
BLCC MISS RED ROCK 326F
 BLCC MISS CROSBY 335C

KENCO/MF POWERLINE 204L
 LBR NIGHT DREAM M22
 ERIXON DEALER 63Z
 BLCC MISS POWERLINE 182W
 DAY RED PEPPER DOC 984R
 KWA MS ROCK 7P
 KOP CROSBY 137W
 KOP MS TOUCHDOWN 170U

BWT	WWT	CE	BW	WW	YW	MILK	MCE	MWWT
94 lbs	790 lbs	4	5.2	83.8	126.4	26.2	3.3	68.1

HOMO POLLED TEST PENDING.

A beefy son of Crockett that looks like he will add pounds of beef, do-ability and muscle without sacrificing eye appeal. 326F has calved a full brother and is doing a great job.



SIRE

BLCC Mr Crocket 218J

ADD POUNDS & PERFORMANCE
WITHOUT SACRIFICE



**HOMO POLLED TEST PENDING.
HOMO POLLED BY PEDIGREE.**
An exciting herd bull prospect here, sired by Right Hand Man and mothered by the elite dam we were able to purchase from Bouchard Livestock, 400D. Lots of rib shape, muscle expression, eye appeal and predictability. 135N will make a tremendous herdsire.



SIRE Rusylvia/SC Right Hand Man 14L

35 BLCC MR RIGHT HAND MAN 135N
CA-PG1547028 BLCC 135N 1/3/2025 POLLED

SVS RANCHER 42H
RUSYLVIA/SC RIGHT HAND MAN 14L
WFL RED SAGE 506C

IPU RED WESTERN 49X
BBN MISS SMARTY 400D
MRL MISS SMARTY PANTS III

SVS TYCOON 841F
LTS SAMMIE
R PLUS RELOAD 2006Z
WFL RED SAGE 1003Y
WS BEEF MAKER R13
IPU 52N POCAHONTAS 215U
LFE RED CASINO 3036X
TRIPLE C SMARTY PANTS R

BWT	WWT	CE	BW	WW	YW	MILK	MCE	MWWT
96 lbs	820 lbs	6.8	3.1	79.5	108.7	25.2	4.6	64.9

HOMO POLLED TEST PENDING.
Long bodied, great haired bull that will add pounds, eye appeal and strong maternal. 169G has a great udder and milks very well.

36 BLCC MR REDDINGTON 190N
PENDING BLCC 190N 3/9/2025 POLLED

R PLUS REDDINGTON 0143H
BLCC MR REDDINGTON 281K
CROSSROAD FRANKIE 68F

PWK GIBSONS FINEST 6Y 52E
BLCC MISS FINEST 169G
BLCC MISS CROSBY 335C

R PLUS VENOM 4006B
MISS R PLUS 6168D
MRC SUPREMACY 260B
ERIXON LADY 16B
MUIRHEAD LIVE WIRE 95R
KOP MS BENGIE 6P
IPU RED TOUCHDOWN 32S
KOP MS FREIGHTLINER 119S

BWT	WWT	(PE) CE	BW	WW	YW	MILK	MCE	MWWT
100 lbs	775 lbs	3.4	4.7	82.9	119.7	24.5	2.7	66



BLACK TWO-YEAR-OLDS

Homo Polled and color test pending. A deep sided, big bodied beef bull with some chrome that comes from one of our best cow families. 24M will add muscle, pounds, eye appeal and his daughters should be powerful producers.



SIRE Sunny Valley Storm 56K

37 BLCC MR STORM 24M

CA-BPG1500837 BLCC 24M 18/2/2024 POLLED

SVS TYCOON 841F
SUNNY VALLEY STORM 56K
 SUNNY VALLEY DESIRE 13C

WHEATLAND REVENUE 677D
BLCC MISS REVENUE 88J
 BLCC MISS BLACKSTING 117Z

SVS BROOKS 669D
 SVS RED ANNIE 411B
 SVS CAPTAIN MORGAN 11Z
 RDD MS SHEAR DESIRE 4X
 PROFIT
 WHEATLAND LADY 935W
 BLCC MR BLACK STING 155S
 BLCC MISS HUSTLER 79U

BWT	WWT	CE	BW	WW	YW	MILK	MCE	MWWT
94 lbs	842 lbs	5.1	4.1	89	126.3	24.3	4.2	68.8

38 BLCC MR STORM 42M

CA-BPG1546226 BLCC 42M 23/2/2024 POLLED

SVS TYCOON 841F
SUNNY VALLEY STORM 56K
 SUNNY VALLEY DESIRE 13C

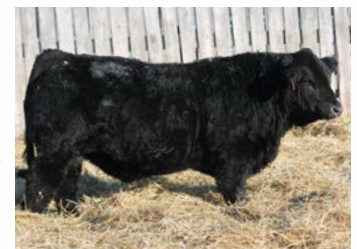
WHEATLAND AFFILIATE 7128E
JPCC GOLDY 17G
 SPRINGCREEK GOLDY 135A

SVS BROOKS 669D
 SVS RED ANNIE 411B
 SVS CAPTAIN MORGAN 11Z
 RDD MS SHEAR DESIRE 4X
 CCLT ALLIANCE 91C
 WHEATLAND LADY 308A
 SPRINGCREEK LOTTO 52Y
 SPRINGCREEK GOLDY 135W

BWT	WWT	CE	BW	WW	YW	MILK	MCE	MWWT
90 lbs	755 lbs	5.2	4.2	84.1	119.3	24.5	3.6	66.6



Homo Polled color test pending. A Storm son that will produce some amazing females. The dam is a beautifully made cow that has produced very well. 42M will add uniformity and high maternal values.



MATERNAL BROTHER
 BLCC Mr 5015C 2J



HOMO POLLED & COLOR TEST PENDING.
 An eye appealing, long bodied muscled up son of Legal Cusstody that will sire uniformity and is bred for longevity. Plenty of muscle, top, has a great hair coat and a hard-working dam.

39 BLCC MR CUSSTODY 45M
 CA-BPG1500844 BLCC 45M 25/2/2024 POLLED

SPRINGCREEK DRIVER 135Z
SUN RISE LEGAL CUSSTODY 28H
 SPRINGCREEK BROOKE 68Z

LFE BS LEWIS 322U
BLCC MISS STUBBY 3C
 BLCC MISS TEDDY 15W

SPRINGCREEK LINER 104S
 SPRINGCREEK BK STORMY 61T
 KOP CROSBY 137W
 SPRINGCREEK BROOKE 11W
 R PLUS BLACKEDGE
 LFE BS MS ARNOLD 135S
 WHEATLAND RED TEDDY 457P
 BLCC MISS BRAVADO 5T

BWT	WWT	CE	BW	WW	YW	MILK	MCE	MWWT
92 lbs	785 lbs	7.3	3.3	77.5	112.6	25.8	4.4	64.6

40 BLCC MR STORM 78M
 CA-BPG1546239 BLCC 78M 28/2/2024 POLLED

SVS TYCOON 841F
SUNNY VALLEY STORM 56K
 SUNNY VALLEY DESIRE 13C

SKORS BLACK CROCKET 234Z
BLCC MISS BCROCKETT 56D
 KOP MS TRACKER 213X

SVS BROOKS 669D
 SVS RED ANNIE 411B
 SVS CAPTAIN MORGAN 11Z
 RDD MS SHEAR DESIRE 4X
 LBR CROCKET R81
 SKORS MS CHOCOLATE 179S
 CG TRACKER 45T
 KOP MS BENGIE 125S

BWT	WWT	CE	BW	WW	YW	MILK	MCE	MWWT
94 lbs	760 lbs	3.9	4.7	85.7	128.3	29.1	4.4	72

HOMO POLLED & COLOR TEST PENDING.

An attractive blaze faced son of Storm that has an awesome dam. 78M will add eye appeal, performance and predictability. The dam and grandam have been very consistent.



26 BLACK TWO-YEAR-OLD BULLS

SIRE Sunny Valley Storm 56K

HOMO POLLED & COLOR TEST PENDING.

A long bodied, wide topped eye appealing beef bull that is ready for heavy service. 89M will add pounds, vigor, performance and strong maternal.



41 BLCC MR LEGACY 89M

CA-BPG1500863 BLCC 89M 2/3/2024 POLLED

R PLUS 5015C
BLCC MR 5015C 65H
 BLCC MISS DEALER 87C

SWAN LAKE CALEB 3 C
TWIN BRAE GINNY 3G
 TWIN BRAE YOLANDA 43Y

WFL ABSOLUTE 51Y
 IPU MS. 56U LINER 15A
 ERIXON DEALER 63Z
 BLCC MISS RED 284T
 KWA FLYF RED MOUNTAIN 16Z
 SWAN LAKE BECKY 39A
 DANA WHEAT KING 46U
 TWIN BRAE ULSA 843U

BWT	WWT	CE	BW	WW	YW	MILK	MCE	MWWT
92 lbs	770 lbs	7.7	2.9	78.5	119.4	25.8	5	65.1

42 BLCC MR STORM 90M

CA-BPG1546225 BLCC 90M 3/3/2024 POLLED

SVS TYCOON 841F
SUNNY VALLEY STORM 56K
 SUNNY VALLEY DESIRE 13C

WHEATLAND REVENUE 677D
BLCC MISS REVENUE 332K
 BLCC MISS DOUBLE UP 154Y

SVS BROOKS 669D
 SVS RED ANNIE 411B
 SVS CAPTAIN MORGAN 11Z
 RDD MS SHEAR DESIRE 4X
 PROFIT
 WHEATLAND LADY 935W
 RF DOUBLE UP 37W
 BLCC MISS DYNAMITE 23S

BWT	WWT	CE	BW	WW	YW	MILK	MCE	MWWT
92 lbs	760 lbs	5.6	3.5	85.2	121.7	24.5	5.2	67.1



HOMO POLLED TEST PENDING.

A hetero black son of Storm that is attractive and comes from a great cow family. 90M boasts an attractive profile, lots of muscle, top, eye appeal and will sire some great steers and productive daughters.



HOMO POLLED & COLOR TEST PENDING.

These Legacy sons are so similar in type, long bodied, great muscled beef bulls with performance and eye appeal. 128M fits this mold and should sire some great progeny. His dam is a hard working, great uddered cow that gets it done every year.



SIRE BLCC Mr 5015C 65H

43 BLCC MR LEGACY 128M

CA-BPG1546236 BLCC 128M 5/3/2024 POLLED

R PLUS 5015C
BLCC MR 5015C 65H
BLCC MISS DEALER 87C

WHEATLAND REVENUE 677D
BLCC MISS REVENUE 224G
BLCC MISS BCROCKETT 173B

WFL ABSOLUTE 51Y
IPU MS. 56U LINER 15A
ERIXON DEALER 63Z
BLCC MISS RED 284T
PROFIT
WHEATLAND LADY 935W
SKORS BLACK CROCKET 234Z
BLCC MISS ROCK 365X

BWT	WWT	CE	BW	WW	YW	MILK	MCE	MWWT
92 lbs	776 lbs	4.8	3.6	85.3	124.9	22.6	2.1	65.3

44 BLCC MR STORM 134M

CA-BPG1546229 BLCC 134M 6/3/2024 POLLED

SVS TYCOON 841F
SUNNY VALLEY STORM 56K
SUNNY VALLEY DESIRE 13C

MAPLE LAKE 6666
BLCC MISS SWAGGER 212J
BLCC MISS WALLBANGER 5E

SVS BROOKS 669D
SVS RED ANNIE 411B
SVS CAPTAIN MORGAN 11Z
RDD MS SHEAR DESIRE 4X
WHEATLAND SWAGGER 343A
MAPLE LAKE 3266
SPRINGCREEKWALLBANGER 11Z
BLCC MISS BLACKSTING 117Z

BWT	WWT	CE	BW	WW	YW	MILK	MCE	MWWT
90 lbs	760 lbs	6.3	3.4	85.4	125.5	24.8	5	67.5

HOMO POLLED & COLOR TEST PENDING.

An attractive Storm son again from the great D92 cow family. 134M will do a great job of siring good performing sons and his daughters should be fantastic.





45 BLCC MR LEGACY 140M

CA-BPG1501051 BLCC 140M 9/3/2024 POLLED

R PLUS 5015C
BLCC MR 5015C 65H
 BLCC MISS DEALER 87C

R PLUS 6296D
BLCC MISS R PLUS 317G
 BLCC MISS CROCKETT 99C

WFL ABSOLUTE 51Y
 IPU MS. 56U LINER 15A
 ERIXON DEALER 63Z
 BLCC MISS RED 284T
 R PLUS 2151Z
 MISS R PLUS 3284A
 SKORS BLACK CROCKET 234Z
 BLCC MISS HUSTLER 426U

BWT	WWT	CE	BW	WW	YW	MILK	MCE	MWWT
94 lbs	780 lbs	5.1	4	84.7	123.9	22.1	2.7	64.5

HOMO POLLED & COLOR TEST PENDING.

A long spined, big bodied beef bull that will add pounds, uniformity and predictability, as all the Legacy sons do. 140M has a ton of muscle, rib shape and capacity that always gets him noticed. The dam is a great uddered female that milks well.

46 BLCC MR LEGACY 158M

CA-BPG1546235 BLCC 158M 10/3/2024 POLLED

R PLUS 5015C
BLCC MR 5015C 65H
 BLCC MISS DEALER 87C

JPCC MR LINER 75B
BLCC MISS LINER 199H
 BLCC MISS ENTICER 39B

WFL ABSOLUTE 51Y
 IPU MS. 56U LINER 15A
 ERIXON DEALER 63Z
 BLCC MISS RED 284T
 SPRINGCREEK LINER 56U
 DRAKE TULA 1R
 SKORS RED ENTICER 48Z
 KOP MS TRACKER 192W

BWT	WWT	CE	BW	WW	YW	MILK	MCE	MWWT
82 lbs	715 lbs	4.8	3.5	84.8	129.5	22.2	2.2	64.6

HOMO POLLED & COLOR TEST PENDING.

A wide topped, deep sided Legacy son that comes from a great cow family and should produce an amazing set of daughters and his sons should be great as well. 199 H is an excellent uddered female.



46



HOMO POLLED & COLOR TEST PENDING.

A big volume Riddler son that will sire calves that will be in high demand every fall. 160M is full of top, volume, muscle and eye appeal. 46G again is a descendant of our D92 cow family.



SIRE BLCC Mr Riddler 1J

47 BLCC MR RIDDLER 160M
PENDING BLCC 160M 12/3/2024 POLLED

LFE THE RIDDLER 323B
BLCC MR RIDDLER 1J
LFE BS HEAVEN SENT 89A

MAPLE LAKE 6666
BLCC MISS SWAGGER 46G
BLCC MISS RED ROCK 51B

LFE GOTHAM 819Y
LFE BS CHARO 23Y
3D BLK FULL THROTTLE 483X
LFE HEAVEN SENT 30X
WHEATLAND SWAGGER 343A
MAPLE LAKE 3266
KWA RED ROCK 5T
BLCC MISS 180R

BWT	WWT	CE	BW	WW	YW	MILK	MCE	MWWT
94 lbs	780 lbs	5.3	3.8	83	128.9	17.9	4	59.4

48 BLCC MR RIDDLER 162M
PENDING BLCC 162M 12/3/2024 POLLED

LFE THE RIDDLER 323B
BLCC MR RIDDLER 1J
LFE BS HEAVEN SENT 89A

KOP CROSBY 137W
BLCC MISS CROSBY 134E
BLCC MISS RED ROCK 352A

LFE GOTHAM 819Y
LFE BS CHARO 23Y
3D BLK FULL THROTTLE 483X
LFE HEAVEN SENT 30X
MUIRHEAD LIVE WIRE 95R
KOP MS BENGIE 6P
KWA RED ROCK 5T
BLCC MISS RED 213U

BWT	WWT	CE	BW	WW	YW	MILK	MCE	MWWT
96 lbs	755 lbs	4.8	4.5	87.6	132.8	23.8	4.7	67.6

HOMO POLLED TEST PENDING.

A hetero black son of Riddler that is long, wide and full of muscle. Plenty of growth and performance and ready to go to work. His red dam has raised the goods one before.



30 BLACK TWO-YEAR-OLD BULLS



PATERNAL GRANDSIRE
LFE The Riddler 323B

HOMO POLLED & COLOR TEST PENDING.

An attractive blaze faced bull that has had his share of admirers. Long bodied, smooth made and should sire some great stock. 280J is a neat made excellent uddered female. The money stripe is a bonus as well.



MATERNAL GRANDSIRE
Wheatland Man O'War 907G

49 RJB MR RIDDLER 176M
PENDING RJB 176M 15/3/2024 POLLED

LFE THE RIDDLER 323B
BLCC MR RIDDLER 1J
LFE BS HEAVEN SENT 89A

WHEATLAND MAN O'WAR 907G
RJB MISS MAN O WAR 290J
ADBS MISS PONDEROSA 213E

LFE GOTHAM 819Y
LFE BS CHARO 23Y
3D BLK FULL THROTTLE 483X
LFE HEAVEN SENT 30X
CCLT ALLIANCE 91C
WHEATLAND LADY 519C
KOP PONDEROSA 144Y
ADBS MISS 99U 370X

BWT	WWT	CE	BW	WW	YW	MILK	MCE	MWWT
94 lbs	745 lbs	5.1	3.7	82.3	120.2	19.7	3.7	60.8

50 BLCC MR RIDDLER 178M
PENDING BLCC 178M 16/3/2024 POLLED

LFE THE RIDDLER 323B
BLCC MR RIDDLER 1J
LFE BS HEAVEN SENT 89A

SILVER LAKE DEALER 60B
BLCC MISS DEALER 49J
BLCC MISS BARONESS 199C

LFE GOTHAM 819Y
LFE BS CHARO 23Y
3D BLK FULL THROTTLE 483X
LFE HEAVEN SENT 30X
CHAMPS ROMANO
BLCC MISS STRIDE 57W
BLCC MR BARON 183Z
GRINALTA'S GRANDMA MOSES

BWT	WWT	CE	BW	WW	YW	MILK	MCE	MWWT
94 lbs	745 lbs	3	5	84.2	127.6	24.9	1.2	67



HOMO POLLED TEST PENDING.

Another hetero black Riddler son that will sire performance and uniformity, and has some Fleckvieh influence as well. He should sire some great steers and very solid replacements.



MATERNAL GRANDSIRE
Silver Lake Dealer 60B

BLACK TWO-YEAR-OLD BULLS 31



51 **BLCC MR CUSSTODY 180M**
 CA-BPG1546230 BLCC 180M 17/3/2024 POLLED

SPRINGCREEK DRIVER 135Z
SUN RISE LEGAL CUSSTODY 28H
 SPRINGCREEK BROOKE 68Z

ERIXON DEALER 63Z
BLCC MISS DEALER 79F
 BLCC MISS POWERLINE 182W

SPRINGCREEK LINER 104S
 SPRINGCREEK BK STORMY 61T
 KOP CROSBY 137W
 SPRINGCREEK BROOKE 11W
 HARVIE JDF WALLBANGER111X
 ERIXON LADY 35T
 KENCO/MF POWERLINE 204L
 TNT MISS AMERICANA E55

BWT	WWT	CE	BW	WW	YW	MILK	MCE	MWWT
94 lbs	745 lbs	5.2	4.5	82.4	122.2	26.2	3.7	67.4

HETERO POLLED AND COLOR TEST PENDING.

A tremendous herdsire in the making. Sired by Legal Cusstody, this bull shows his explosive muscle, rib shape, and dimension as his sire does. The dam is a big volume female from our E55 cow family that we have may females retained in herd. This is a bull that shouldn't have any guess work.

32 BLACK TWO-YEAR-OLD BULLS



52 **BLCC MR RIDDLER 204M**
 PENDING BLCC 204M 22/3/2024 POLLED

LFE THE RIDDLER 323B
BLCC MR RIDDLER 1J
 LFE BS HEAVEN SENT 89A

KOP CROSBY 137W
BLCC MISS CROSBY 114G
 BLCC MISS SLEDGE 124C

LFE GOTHAM 819Y
 LFE BS CHARO 23Y
 3D BLK FULL THROTTLE 483X
 LFE HEAVEN SENT 30X
 MUIRHEAD LIVE WIRE 95R
 KOP MS BENGIE 6P
 R PLUS 110X
 BLCC MISS RED ROCK 38W

BWT	WWT	CE	BW	WW	YW	MILK	MCE	MWWT
92 lbs	685 lbs	4	5.1	90.8	137.6	22.3	4.7	67.7

HOMO POLLED TEST PENDING.

Hetero black, long bodied, full of muscle, and great performance. 204M will go on to make a quality herdsire that will get the job done. His dam is a great Crosby daughter from one of our best Red Rock cows.

HOMO POLLED TEST PENDING.

Hetero black, full of capacity and muscle, 209M will sire some great steers and even better replacements. His fullblood dam is a heavy milking female that excels at raising great progeny.



MATERNAL GRANDSIRE

MFI Jeremiah 9022

53 BLCC MR RIDDLER 209M
PENDING BLCC 209M 22/3/2024 POLLED

LFE THE RIDDLER 323B
BLCC MR RIDDLER 1J
LFE BS HEAVEN SENT 89A

MFI JEREMIAH 9022
BLCC MISS JUGGERNAUT 115E
BLCC MISS ROSS 103U

LFE GOTHAM 819Y
LFE BS CHARO 23Y
3D BLK FULL THROTTLE 483X
LFE HEAVEN SENT 30X
GIBBONS JEREMIAH
MFI PETRA 2093
SU ROCHESTER 75R
BLCC MISS 104R

BWT	WWT	CE	BW	WW	YW	MILK	MCE	MWWT
92 lbs	670 lbs	3.5	4.9	81.8	121.2	24.4	2.6	65.3

54 BLCC MR RIDDLER 214M
PENDING BLCC 214M 24/3/2024 POLLED

LFE THE RIDDLER 323B
BLCC MR RIDDLER 1J
LFE BS HEAVEN SENT 89A

MAPLE LAKE 6666
BLCC MISS SWAGGER 243H
BLCC MISS WALLBANGER 364D

LFE GOTHAM 819Y
LFE BS CHARO 23Y
3D BLK FULL THROTTLE 483X
LFE HEAVEN SENT 30X
WHEATLAND SWAGGER 343A
MAPLE LAKE 3266
SPRINGCREEKWALLBANGER 11Z
BLCC MISS STING 267S

BWT	WWT	CE	BW	WW	YW	MILK	MCE	MWWT
94 lbs	710 lbs	4.8	4.1	83.9	129.2	17.5	3.4	59.4



HOMO POLLED & COLOR TEST PENDING.

If your market is replacement females 214M would be about as good as any of siring top end daughters. The dam is a beautifully made female, with an excellent udder, and fantastic temperament. 214M should sire eye appeal, muscle and do-ability.



HOMO POLLED & COLOR TEST PENDING.
HOMO POLLED BY PEDIGREE.
 An outstanding son of Storm that will catch your eye. Moderate birthweight with plenty of performance. Plenty of depth, top, and deep quartered. His daughters will be herd builders and his sons will perform.



SIRE R Plus 5015C

55 BLCC MR STORM 226M
 CA-BPG1546232 BLCC 226M 27/3/2024 POLLED

SVS TYCOON 841F
SUNNY VALLEY STORM 56K
 SUNNY VALLEY DESIRE 13C

R PLUS 5015C
BLCC MISS 5015C 156E
 SPRINGCREEK SKY 50T

SVS BROOKS 669D
 SVS RED ANNIE 411B
 SVS CAPTAIN MORGAN 11Z
 RDD MS SHEAR DESIRE 4X
 WFL ABSOLUTE 51Y
 IPU MS. 56U LINER 15A
 LAZY S RED SKY 120R
 SPRINGCREEK LINNE 23R

BWT	WWT	CE	BW	WW	YW	MILK	MCE	MWWT
94 lbs	675 lbs	6.1	3.1	85.9	127.5	24.3	3.8	67.3

56 BLCC MR 5015C 255M
 CA-BPG1546224 BLCC 255M 1/4/2024 POLLED

WFL ABSOLUTE 51Y
R PLUS 5015C
 IPU MS. 56U LINER 15A

JPCC MR LINER 75B
BLCC MISS LINER 106K
 BLCC MISS REVENUE 224G

LFE STRAIT UP 454W
 WFL MS BLACK FLASH 8068U
 SPRINGCREEK LINER 56U
 RTC/JETS UPTOWN GIRL 15U
 SPRINGCREEK LINER 56U
 DRAKE TULA 1R
 WHEATLAND REVENUE 677D
 BLCC MISS BCROCKETT 173B

BWT	WWT	CE	BW	WW	YW	MILK	MCE	MWWT
90 lbs	630 lbs	7.3	2.3	83.5	128.7	20.3	2.2	62.1

HOMO POLLED & COLOR TEST PENDING.

A smooth made, solid black 5015C son out of a first calf heifer, he will provide calving ease and yet his progeny will still perform. 106K is a great young female that has a bright future ahead of her.



34 BLACK TWO-YEAR-OLD BULLS



MATERNAL GRANDSIRE
 JPCC Mr Liner 75B

Homo poll & color test pending.
An attractive made Storm son from a young female that was purchased from Sun Rise Simmentals. The Storm calves come easy and continue to grow. This bulls calves should be the same.



SIRE Sunny Valley Storm 56K

57 **BLCC VMR STORM 256M**
CA-BPG1546227 BLCC 256M 4/4/2024 POLLED

SVS TYCOON 841F
SUNNY VALLEY STORM 56K
SUNNY VALLEY DESIRE 13C

SUN RISE SPECIAL BLEND 29H
SUN RISE BLACK 30K
SUN RISE SHEILA 29E

SVS BROOKS 669D
SVS RED ANNIE 411B
SVS CAPTAIN MORGAN 11Z
RDD MS SHEAR DESIRE 4X
MRL RED WHISKEY 101B
SUN RISE RED 9E
SPRINGCREEK LINER 56U
LFE BS SHEILA 82A

BWT	WWT	CE	BW	WW	YW	MILK	MCE	MWWT
92 lbs	625 lbs	8.7	2.5	83.4	121.2	24.5	6.8	66.2

58 **BLCC MR STORM 257M**
CA-BPG1546228 BLCC 257M 4/4/2024 POLLED

SVS TYCOON 841F
SUNNY VALLEY STORM 56K
SUNNY VALLEY DESIRE 13C

CCLT ALLIANCE 91C
LONE STAR ANNABELLE 19F
ADBS MISS LINER 337D

SVS BROOKS 669D
SVS RED ANNIE 411B
SVS CAPTAIN MORGAN 11Z
RDD MS SHEAR DESIRE 4X
WS PILGRIM H182U
BROOKS SHINIA 1A
JPCC MR LINER 75B
ADBS MISS RIDGELINE 110A

BWT	WWT	CE	BW	WW	YW	MILK	MCE	MWWT
90 lbs	640 lbs	5.6	3.3	84.4	116.8	24	3.3	66.2



HOMO POLLED & COLOR TEST PENDING.
A solid Storm son that will sire a great group of steers and his daughters should be exceptional we have been impressed with Storms strong siring ability.



Homo poll & color test pending. Another Storm son that will produce a great set of steers and his daughters should be great Heavy muscle, great hair coat, lots of top and rib shape.



MATERNAL GRANDSIRE
Wheatland Revenue 677D

59 BLCC MR STORM 258M
CA-BPG1546231 BLCC 258M 4/4/2024 POLLED

SVS TYCOON 841F
SUNNY VALLEY STORM 56K
SUNNY VALLEY DESIRE 13C

WHEATLAND REVENUE 677D
BLCC MISS REVENUE 90H
BLCC MISS DEALER 200D

SVS BROOKS 669D
SVS RED ANNIE 411B
SVS CAPTAIN MORGAN 11Z
RDD MS SHEAR DESIRE 4X
PROFIT
WHEATLAND LADY 935W
ERIXON DEALER 63Z
BLCC MISS POWERLINE 182W

BWT	WWT	CE	BW	WW	YW	MILK	MCE	MWWT
96 lbs	628 lbs	3.1	4.8	88	126.6	26.9	3.5	70.9

60 BLCC MR CUSSTODY 259M
CA-BPG1546233 BLCC 259M 4/4/2024 POLLED

SPRINGCREEK DRIVER 135Z
SUN RISE LEGAL CUSSTODY 28H
SPRINGCREEK BROOKE 68Z

MAPLE LAKE 6666
BLCC MISS SWAGGER 295F
BLCC MISS ENTICER 23B

SPRINGCREEK LINER 104S
SPRINGCREEK BK STORMY 61T
KOP CROSBY 137W
SPRINGCREEK BROOKE 11W
WHEATLAND SWAGGER 343A
MAPLE LAKE 3266
SKORS RED ENTICER 48Z
KOP MS TOUCHDOWN 170U

BWT	WWT	CE	BW	WW	YW	MILK	MCE	MWWT
102 lbs	620 lbs	6.5	3.4	83.1	122.9	25.6	4.3	67.2

Homo polled and color test pending. A beefy bull that will be an ideal sire of a group of steers that will push the scales down hard every fall. 259M is muscled up and ready to go to work.



36 BLACK TWO-YEAR-OLD BULLS



MATERNAL GRANDSIRE
Maple Lake 6666

HOMO POLLED TEST PENDING.

A very attractive hetero black son of Storm that is very easy to look at. He is a well muscled, hairy good moving bull you instantly notice in the pen. He is out of a beautiful uddered female that has been a powerful producer so far.



61

61 BLCC MR STORM 260M
CA-BPG1546234 BLCC 260M 4/4/2024 POLLED

SVS TYCOON 841F
SUNNY VALLEY STORM 56K
SUNNY VALLEY DESIRE 13C

R PLUS 5015C
BLCC MISS 5015C 158H
BLCC MISS RED ROCK 75E

SVS BROOKS 669D
SVS RED ANNIE 411B
SVS CAPTAIN MORGAN 11Z
RDD MS SHEAR DESIRE 4X
WFL ABSOLUTE 51Y
IPU MS. 56U LINER 15A
KWA RED ROCK 5T
BLCC MISS STING 144Y

BWT	WWT	CE	BW	WW	YW	MILK	MCE	MWWT
90 lbs	630 lbs	8.6	2.2	87.6	129.4	24.7	5.7	68.5

62 BLCC MR STORM 261M
CA-BPG1546237 BLCC 261M 5/4/2024 POLLED

SVS TYCOON 841F
SUNNY VALLEY STORM 56K
SUNNY VALLEY DESIRE 13C

JPCC MR LINER 75B
BLCC MISS LINER 99J
BLCC MISS SWAGGER 251F

SVS BROOKS 669D
SVS RED ANNIE 411B
SVS CAPTAIN MORGAN 11Z
RDD MS SHEAR DESIRE 4X
SPRINGCREEK LINER 56U
DRAKE TULA 1R
MAPLE LAKE 6666
BLCC MISS ENTICER 39B

BWT	WWT	CE	BW	WW	YW	MILK	MCE	MWWT
90 lbs	605 lbs	5.4	3.5	85.8	128.5	26.4	4.8	69.3



62

HOMO POLLED & COLOR TEST PENDING.

A square made Storm son that has the hair and muscle that we expect from this sire group The dam is a favorite cow here at the ranch for her temperament, and attractiveness.

BLACK TWO-YEAR-OLD BULLS 37

BLACK YEARLINGS



63

BLCC MR 5015C 10N

CA-BPG1546936 BLCC 10N 11/1/2025 POLLED

WFL ABSOLUTE 51Y
R PLUS 5015C
 IPU MS. 56U LINER 15A

CG TRACKER 45T
KOP MS TRACKER 213X
 KOP MS BENGIE 125S

LFE STRAIT UP 454W
 WFL MS BLACK FLASH 8068U
 SPRINGCREEK LINER 56U
 RTC/JETS UPTOWN GIRL 15U
 DOUBLE BAR D DRIFTWOOD 83
 CG BLACK GENIE 371N
 R PLUS 2169M
 KOP MS FLASHBACK 73N

BWT	WWT	CE	BW	WW	YW	MILK	MCE	MWWT
92 lbs	880 lbs	5.1	3.9	81.4	127.2	24	2.1	64.6



PATERNAL GRANDDAM

IPU Ms. 56U Liner 15A

HOMO POLLED & COLOR TEST PENDING. HOMO POLLED BY PEDIGREE.

An outstanding son of 5015C that has attracted a lot of attention for his type, color pattern, and predictable pedigree. 5015C has certainly done his share in the industry, and continues to do so today. The dam is one elite female from our embryo program that has been very consistent in raising top calves every year. 10N is long, wide topped and will mature to be an outstanding herdsire.



64 **BLCC MR JUSTIFIED 32N**
 PENDING BLCC 32N 30/1/2025 POLLED

SVS RANCHER 42H
SVS JUSTIFIED 62K
 CMS SODA POP 410B

RF CAPACITY 742E
SVS RED SAGE 932G
 WFL RED SAGE 506C

SVS TYCOON 841F
 HLTS SAMMIE
 DRAKE POKER FACE 2X
 HPF CREAM SODA Y010
 WFL WESTCOTT 24C
 RF FAMOUS 409B
 R PLUS RELOAD 2006Z
 WFL RED SAGE 1003Y

BWT	WWT	CE	BW	WW	YW	MILK	MCE	MWWT
90 lbs	820 lbs	6.9	3.3	79	112.8	23.1	5.1	62.6

HOMO POLLED TEST PENDING. HOMO POLLED BY PEDIGREE.
HETERO BLACK son of Justified and our newest donor 932G. Lots of muscle, rib shape, capacity and eye appeal with a stellar pedigree makes 32N a very interesting lot. The power of the Sage cow family has its own chapter in the Simmental history book. 32N should be a sure thing.



PATERNAL GRANDSIRE
 SVS Rancher 42H



PATERNAL GRANDDAM
 CMS Soda Pop 410B



MATERNAL GRANDSIRE
 RF Capacity 742E



MATERNAL GRANDDAM
 WFL Red Sage 506C



65

BLCC MR JUSTIFIED 41N

PENDING BLCC 41N 4/2/2025 HOMO POLLED

SVS RANCHER 42H
SVS JUSTIFIED 62K
 CMS SODA POP 410B

RF CAPACITY 742E
SVS RED SAGE 932G
 WFL RED SAGE 506C

SVS TYCOON 841F
 HLTS SAMMIE
 DRAKE POKER FACE 2X
 HPF CREAM SODA Y010
 WFL WESTCOTT 24C
 RF FAMOUS 409B
 R PLUS RELOAD 2006Z
 WFL RED SAGE 1003Y

BWT	WWT	CE	BW	WW	YW	MILK	MCE	MWWT
96 lbs	840 lbs	6.9	3.3	79	112.8	23.1	5.1	62.6

HOMO POLLED TEST PENDING. HOMO POLLED BY PEDIGREE.
HETERO BLACK sold son of Justified that will add pounds, thickness, do-ability and eye appeal. The power and predictability of his elite dam makes 41N an intriguing lot. We have been very impressed with this mating.



DAM

SVS Red Sage 932G

**HOMO POLLED TEST PENDING.
HETERO BLACK.**

A great calving ease option here as 48N started life small and has continued to grow to the impressive individual he is now. Turn him in with your heifers and have worry free calving. 24L is a beautifully made young female that has a great future.



66 RJB MR HANNIBAL 48N

BPG1547382 RJB 48N 8/2/2025 POLLED

REMINGTON LOCK N LOAD 54U
SRH HANNIBAL 5H
SRH PRECIOUS 73A

KWA RED ROCK 5T
RJB MISS RED ROCK 24L
RJB MISS AFFINITY 29J

REMINGTON ON TARGET 2S
BAR 15 MISS KNIGHT78E-51G
WHEATLAND BULL 786T
OBCC CHYNA C49U
DAY RED PEPPER DOC 984R
KWA MS ROCK 7P
WHEATLAND AFFINITY 8196F
RJB MISS WESTERN FORCE 187G

BWT	WWT	CE	BW	WW	YW	MILK	MCE	MWWT
72 lbs	745 lbs	16.4	-1.3	73.8	111.8	20.4	8.7	57.3

67 BLCC MR LEGACY 49N

HALFBLOOD BLCC 49N 12/2/2025

R PLUS 5015C
BLCC MR 5015C 65H
BLCC MISS DEALER 87C

SIX MILE ANGUS DAM

WFL ABSOLUTE 51Y
IPU MS. 56U LINER 15A
ERIXON DEALER 63Z
BLCC MISS RED 284T

BWT	WWT	CE	BW	WW	YW	MILK	MCE	MWWT
94 lbs	795 lbs	-	-	-	-	-	-	-



HOMO POLLED TEST PENDING.

The Legacy progeny have been very consistent. Bull or heifers, they hit the ground and continue to develop into top end beef cattle. 49N displays an abundance of muscle, thickness, width of top and eye appeal.



SIRE BLCC Mr 5015C 65H



68 BLCC MR LEGACY 50N

CA-BPG1546290 BLCC 50N 12/2/2025 POLLED

R PLUS 5015C
BLCC MR 5015C 65H
 BLCC MISS DEALER 87C

R PLUS 5015C
BLCC MISS 5015C 104E
 BLCC MISS STUBBY 20B

WFL ABSOLUTE 51Y
 IPU MS. 56U LINER 15A
 ERIXON DEALER 63Z
 BLCC MISS RED 284T
 WFL ABSOLUTE 51Y
 IPU MS. 56U LINER 15A
 LFE BS LEWIS 322U
 BLCC MISS RED ROCK 40Z

BWT	WWT	CE	BW	WW	YW	MILK	MCE	MWWT
90 lbs	820 lbs	6.2	3	86	128.3	18.2	1.7	61.2

HOMO POLLED AND COLOR TEST PENDING.

An outstanding herdsire prospect. Sired by our 5015C son, who we call Legacy, this sire has done everything right that we have asked, siring bulls and females that are making top cut, productive beef cattle. 50N is a wide topped, loose made easy doing herdsire prospect that will mature to greatness. 104E had a great production record and is a very hard-working female.

42 BLACK YEARLING BULLS



69

69 RJB MR LEGEND 72N

BG1547360 RJB 72N 21/2/2025 POLLED

MADER SON OF ANARCHY 144H
VDV LEGEND 14L
 SRH PRECIOUS 73A

PLUS 5015C
RJB MISS 5015C 79H
 ADBS MISS PONDEROSA 212E

TJSC BOONE PICKENS 46C
 LFE BS SHEILA 82A
 WHEATLAND BULL 786T
 OBCC CHYNA C49U
 WFL ABSOLUTE 51Y
 IPU MS. 56U LINER 15A
 KOP PONDEROSA 144Y
 ADBS MISS 99U 370X

BWT	WWT	CE	BW	WW	YW	MILK	MCE	MWWT
86 lbs	755 lbs	11	1.3	81.6	118.4	21.9	4.2	62.7

HOMO POLLED TEST PENDING. HETERO BLACK.

Thick made Legend son that that is unique and should provide some calving ease and uniformity. We have been impressed with the Legend calves here and think 72N could do a great job on a group of heifers.

HOMO POLLED AND COLOR TEST PENDING.

A beefy Legacy son from a hard-working female that gets the job done every year. Lots of Muscle, top, capacity, eye appeal and a great haircoat.



MATERNAL BROTHER
BLCC Mr 600U 51J

70 BLCC MR LEGACY 92N
CA-BPG1546287 BLCC 92N 24/2/2025 POLLED

R PLUS 5015C
BLCC MR 5015C 65H
BLCC MISS DEALER 87C

SWAN LAKE CALEB 3 C
TWIN BRAE GYPSY 2G
TWIN BRAE TINA

WFL ABSOLUTE 51Y
IPU MS. 56U LINER 15A
ERIXON DEALER 63Z
BLCC MISS RED 284T
KWA FLYF RED MOUNTAIN 16Z
SWAN LAKE BECKY 39A
PVF-CW RAPID FIRE 0195K
TWIN BRAE BLACK JAYCEE

BWT	WWT	CE	BW	WW	YW	MILK	MCE	MWWT
78 lbs	730 lbs	6.3	3.5	82.7	125.7	26.5	4.2	67.9

71 BLCC MR LEGACY 93N
CA-BPG1546294 BLCC 93N 24/2/2025 POLLED

R PLUS 5015C
BLCC MR 5015C 65H
BLCC MISS DEALER 87C

SWAN LAKE CALEB 3 C
TWIN BRAE GYPSY 2G
TWIN BRAE TINA

WFL ABSOLUTE 51Y
IPU MS. 56U LINER 15A
ERIXON DEALER 63Z
BLCC MISS RED 284T
KWA FLYF RED MOUNTAIN 16Z
SWAN LAKE BECKY 39A
PVF-CW RAPID FIRE 0195K
TWIN BRAE BLACK JAYCEE

BWT	WWT	CE	BW	WW	YW	MILK	MCE	MWWT
82 lbs	715 lbs	6.3	3.5	82.7	125.7	26.5	4.2	67.9



HOMO POLLED & COLOR TEST PENDING.

The brother to 92N, he displays the same type and characteristics as his sire does. 93N will do a great job of siring quality progeny.



72

HOMO POLLED AND COLOR TEST PENDING.

An easy doing Legacy son that will go on to make a very impressive herdsire. Lots of capacity, muscle and top that the Legacy progeny are known for. 66G is a great uddered female that has done very well.



FULL BROTHER
BLCC Mr Legacy 25M

72 BLCC MR LEGACY 145N
CA-BPG1546241 BLCC 145N 3/3/2025 POLLED

R PLUS 5015C
BLCC MR 5015C 65H
BLCC MISS DEALER 87C

TWIN BRAE DUST BUSTER
TWIN BRAE GRACIE 66 G
TWIN BRAE MS DREAMER 663D

WFL ABSOLUTE 51Y
IPU MS. 56U LINER 15A
ERIXON DEALER 63Z
BLCC MISS RED 284T
FBF1 COMBUSTIBLE
TWIN BRAE MS MAGIC 51A
MLC MR JUSTICE W744
TWIN BRAE BLACK YUMMY

BWT	WWT	CE	BW	WW	YW	MILK	MCE	MWWT
94 lbs	780 lbs	3.9	4.4	90.4	137.4	21.4	2.6	66.6

73 BLCC MR REDDINGTON 221N
PENDING BLCC 221N 3/15/2025 POLLED

R PLUS REDDINGTON 0143H
BLCC MR REDDINGTON 281K
CROSSROAD FRANKIE 68F

R PLUS 5015C
BLCC MISS 5015C 157E
BLCC MISS ENTICER 39B

R PLUS VENOM 4006B
MISS R PLUS 6168D
MRC SUPREMACY 260B
ERIXON LADY 16B
WFL ABSOLUTE 51Y
IPU MS. 56U LINER 15A
SKORS RED ENTICER 48Z
KOP MS TRACKER 192W

BWT	WWT	(PE) CE	BW	WW	YW	MILK	MCE	MWWT
94 lbs	750 lbs	5.2	3.6	83.7	127	20.9	1.6	62.8

HOMO POLLED TEST PENDING. HETERO BLACK.

A loose made son of the Reddington bull we are using that will add depth, muscle, rib shape, and do-ability. We have been very impressed with his progeny. 157E is a heavy milking female that outdoes herself every year.



73

FULLBLOOD TWO-YEAR-OLDS



74

BLCC MR STUEY 70M

CA-1500857 BLCC 70M 29/2/2024 HORNED

SOUTHSEVEN MR ADONIS 96Z
BLACK GOLD STUEY 264H
 BLACK GOLD MS JANIS 110C

DOUBLE BAR D POL MANCHESTER
SIBELLE PRECIOUS 34J
 ANCHOR D EMOTION 803E

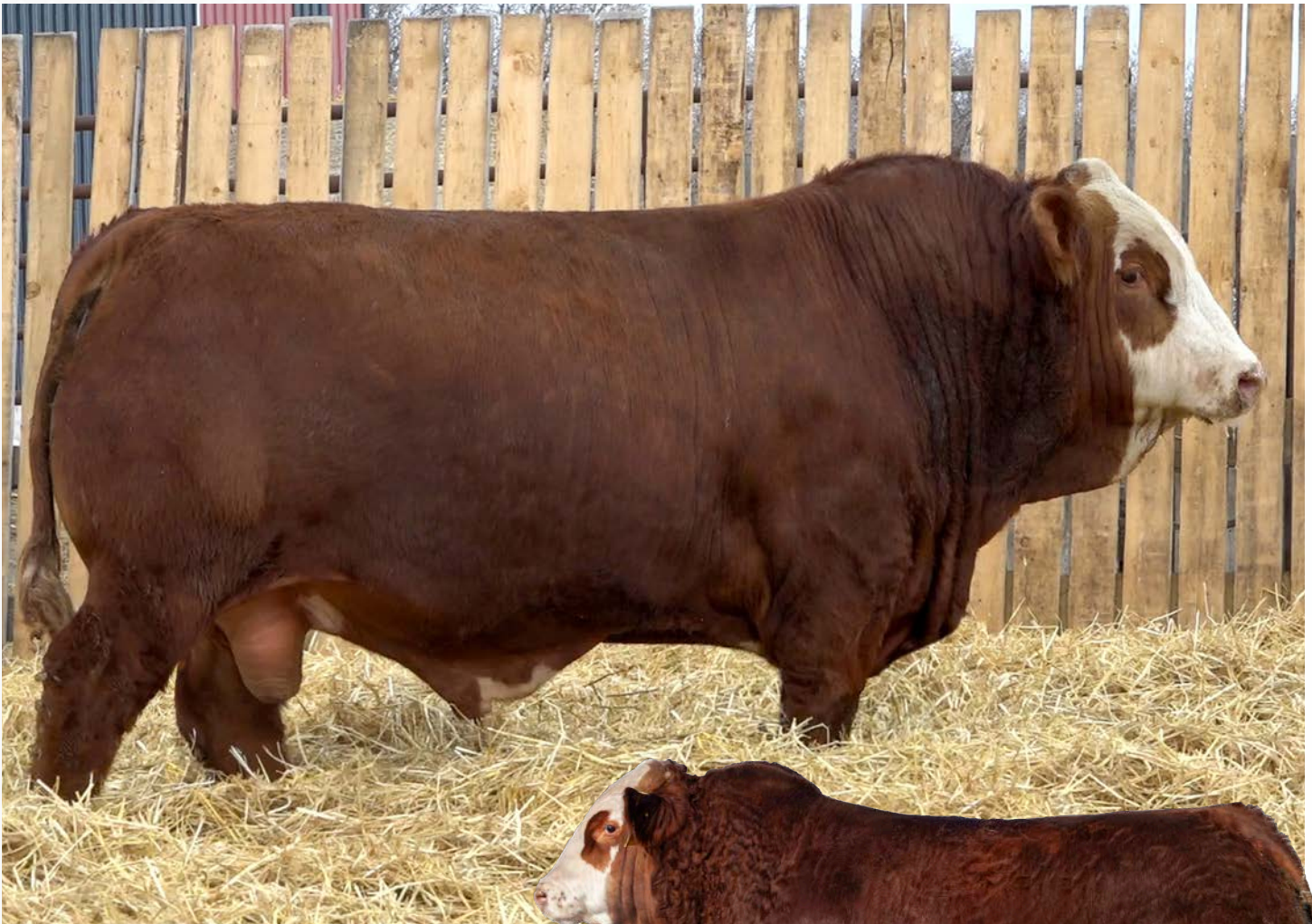
BLCC MR ADONIS 30X
 SOUTH SEVEN MISS 70S
 BLACK GOLD EPIC 14Z
 PATS JANIS 3W
 DOUBLE BAR D JURY 156B
 DOUBLE BAR D PETRA 189B
 FGAF FRENCH ATTACK 010C
 FGAF PRECIOUS THING 402T

BWT	WWT	CE	BW	WW	YW	MILK	MCE	MWWT
94 lbs	760 lbs	6.4	4.6	75.7	108.6	34.7	2.8	72.6

A real meat machine here. 70M is extremely easy doing and certainly makes you take notice. The amount of rib shape, muscle, capacity and eye appeal makes him a herdsire that stands out. 34J is a great uddered female that really works hard. This bull will add pounds and muscle and is ready to go to work.



SIRE Black Gold Stuey 264H



75 **BLCC MR MANCHESTER 86M**
 CA-P1546247 BLCC 86M 2/3/2024 POLLED

DOUBLE BAR D JURY 156B
DOUBLE BAR D POL MANCHESTER
 DOUBLE BAR D PETRA 189B

SILVER LAKE DEALER 60B
BLCC MISS SL DEALER 161D
 BLCC MISS EVEREST 2A

MFI JEREMIAH 9022
 DOUBLE BAR D FEATHER 117L
 WLSF KAIMAT 930X
 DOUBLE BAR D PETRA 325Y
 CHAMPS ROMANO
 BLCC MISS STRIDE 57W
 DOUBLE BAR D EVEREST 4R
 MFI FLORA 3065

BWT	WWT	CE	BW	WW	YW	MILK	MCE	MWWT
96 lbs	770 lbs	4.1	4.8	68.5	93.3	31.7	1.5	66

An outstanding Manchester son that has a great quarter, wide top and full of muscle. A very free moving bull that covers ground easily. 161D is a powerful female that has been exceptional.



SIRE
 Double Bar D POL Manchester



MATERNAL GRANDSIRE Silver Lake Dealer 60B

A long-bodied beef bull ready for heavy service. 203M has a lot of muscle expression, depth of quarter and width of top to significantly impact his calf crop. He will add pounds and his daughters should make great replacements.



SIRE Black Gold Stuey 264H

76 **BLCC MR STUEY 203M**
CA-1546248 BLCC 203M 22/3/2024 HORNED

SOUTHSEVEN MR ADONIS 96Z
BLACK GOLD STUEY 264H
BLACK GOLD MS JANIS 110C

BLCC MR BARON 183Z
BLCC MISS BARONESS 22E
BLCC MISS 54P 198X

BLCC MR ADONIS 30X
SOUTH SEVEN MISS 70S
BLACK GOLD EPIC 14Z
PATS JANIS 3W
BHR BARON SA 2842P
MFI LOLITA 8046
G-SEVEN MR 54P
BLCC MISS GRANDE 107T

BWT	WWT	CE	BW	WW	YW	MILK	MCE	MWWT
96 lbs	690 lbs	3.4	5.9	74.6	110	34	-0.6	71.3

77 **BLCC MR FRONTIER 212M**
CA-P1546244 BLCC 212M 23/3/2024 POLLED

BEL WESTERN UNION 5Z
TWIN BRAE WESTERN FRONTIER 8F
TWIN BRAE MS DIDI 78Z

SILVER LAKE DEALER 60B
BLCC MISS SL DEALER 37F
WCC WELLS' WEDNESDAY 927W

RICKARDSTOWN JUMBO
BEL HELGA 9TH
GIBBY'S REAL DEAL 25T
TWIN BRAE MS HUGO 178X
CHAMPS ROMANO
BLCC MISS STRIDE 57W
CEN RENEGADE 504R
SS SAFARA 13S FF

BWT	WWT	CE	BW	WW	YW	MILK	MCE	MWWT
94 lbs	710 lbs	3.4	5.4	73	97.4	34.9	0.6	71.4



Length for days in this good fullblood bull. Sired by the great Western Frontier, he has passed on his length, top, do-ability and eye appeal to 212M. This bull has a tremendous quarter, and is very free moving. 37F is a powerful female that has done well.



SIRE Twin Brae Western Frontier 8F



78

BLCC MR STUEY 262M

CA-1546246 BLCC 262M 4/4/2024 HORNED

SOUTHSEVEN MR ADONIS 96Z
BLACK GOLD STUEY 264H
 BLACK GOLD MS JANIS 110C

SILVER LAKE DEALER 60B
BLCC MISS SL DEALER 316E
 BLCC MISS JUGGERNAUT 120B

BLCC MR ADONIS 30X
 SOUTH SEVEN MISS 70S
 BLACK GOLD EPIC 14Z
 PATS JANIS 3W
 CHAMPS ROMANO
 BLCC MISS STRIDE 57W
 MFI JEREMIAH 9022
 BLCC MISS HOUSTON 144U

BWT	WWT	CE	BW	WW	YW	MILK	MCE	MWWT
96 lbs	705 lbs	4.2	5.8	73.7	107.3	38.8	1.6	75.7

A powerful herdsire here that will make you take a second look. 262M is a dark red, wide topped, big bodied meat machine that commands attention. He has a natural presence about him that makes him get noticed. His dam is one of the most powerful females we have. This bull will sire some amazing progeny.



FULLBLOOD YEARLINGS



79 BLCC MR FRONTIER 13N

CA-1546295 BLCC 13N 13/1/2025 HORNED

BEL WESTERN UNION 5Z
TWIN BRAE WESTERN FRONTIER 8F
 TWIN BRAE MS DIDI 78Z

CROSSROAD POLLED FUTURE
BLCC MISS FUTURE 183E
 BLCC MISS HEARTLAND 200B

RICKARDSTOWN JUMBO
 BEL HELGA 9TH
 GIBBY'S REAL DEAL 25T
 TWIN BRAE MS HUGO 178X
 CROSSROAD VINTAGE 125Z
 CROSSROAD ZELESTE 19Z
 BLCC HEARTLAND 434X
 BLCC MISS 36R

BWT	WWT	CE	BW	WW	YW	MILK	MCE	MWWT
96 lbs	830 lbs	3.3	5.4	74.3	99.6	37.2	-0.7	74.4

A long-bodied fullblood son of Western Frontier that will do a great job adding pounds, performance and predictability to a group of calves. Lots of top, muscle, capacity and eye appeal. 183 is a heavy milking cow that is big on production.



FULL SISTER BLCC Miss Frontier 38L



A soggy made son of Western Frontier that would sire an amazing group of steers that will be sought after every fall. Width of top, tons of depth, great hair coat and comes from a very productive cow family.



MATERNAL GRANDSIRE
Silver Lake Dealer 60B

80 BLCC MR FRONTIER 22N
CA-1546291 BLCC 22N 23/1/2025 HORNED

BEL WESTERN UNION 5Z
TWIN BRAE WESTERN FRONTIER 8F
TWIN BRAE MS DIDI 78Z

SILVER LAKE DEALER 60B
BLCC MISS SL DEALER 211E
WCC WELLS' WEDNESDAY 927W

RICKARDSTOWN JUMBO
BEL HELGA 9TH
GIBBY'S REAL DEAL 25T
TWIN BRAE MS HUGO 178X
CHAMPS ROMANO
BLCC MISS STRIDE 57W
CEN RENEGADE 504R
SS SAFARA 13S FF

BWT	WWT	CE	BW	WW	YW	MILK	MCE	MWWT
92 lbs	815 lbs	4	5.2	71.8	95.7	35.5	1.2	71.4

81 BLCC MR FRONTIER 24N
CA-P1546292 BLCC 24N 24/1/2025 POLLED

BEL WESTERN UNION 5Z
TWIN BRAE WESTERN FRONTIER 8F
TWIN BRAE MS DIDI 78Z

STARWEST TOTAL VALUE
BLCC MISS VALUE 205G
MFI FRIEDA 8108

RICKARDSTOWN JUMBO
BEL HELGA 9TH
GIBBY'S REAL DEAL 25T
TWIN BRAE MS HUGO 178X
DOUBLE BAR D SPITFIRE 20X
PHS POLLED WINFALL 27W
ANCHOR "T" LEGEND 7H
MFI FRIEDA 5052

BWT	WWT	CE	BW	WW	YW	MILK	MCE	MWWT
96 lbs	808 lbs	2.6	5.8	79.5	109.3	34	0.2	73.8

A polled fullblood that is right for the times. 24N will add length, performance and predictability. A great quartered bull that moves out well. His dam is a big volume female that works hard and gets it done.



50 FULLBLOOD YEARLING BULLS

A polled fullblood that has been an eye catcher for some time. 27N displays a great phenotype, and a super pedigree. He will add pounds and predictability as a herdsire. 341E is a big volume female that has produced very well for us.



82 **BLCC MR FRONTIER 27N**
CA-P1546286 BLCC 27N 29/1/2025 POLLED

BEL WESTERN UNION 5Z
TWIN BRAE WESTERN FRONTIER 8F
TWIN BRAE MS DIDI 78Z

BLCC MR BARON 183Z
BLCC MISS BARONESS 341E
BLCC MISS RENEGADE 166X

RICKARDSTOWN JUMBO
BEL HELGA 9TH
GIBBY'S REAL DEAL 25T
TWIN BRAE MS HUGO 178X
BHR BARON SA 2842P
MFI LOLITA 8046
NCK RENEGADE 16R
DOUBLE BAR D ERIN 85M

BWT	WWT	CE	BW	WW	YW	MILK	MCE	MWWT
98 lbs	840 lbs	-0.1	6.8	73.5	99.1	31.5	-4.5	68.3

83 **BLCC MR FRONTIER 29N**
CA-1546296 BLCC 29N 27/1/2025 HORNED

BEL WESTERN UNION 5Z
TWIN BRAE WESTERN FRONTIER 8F
TWIN BRAE MS DIDI 78Z

NCK RENEGADE 16R
BLCC MISS RENEGADE 58A
BLCC MISS ROSS 309T

RICKARDSTOWN JUMBO
BEL HELGA 9TH
GIBBY'S REAL DEAL 25T
TWIN BRAE MS HUGO 178X
NAC UNION'S LEGACY 29L
NORTHERN LIGHT MSMAGIC33J
SU ROCHESTER 75R
BLCC MISS 121P

BWT	WWT	CE	BW	WW	YW	MILK	MCE	MWWT
90 lbs	805 lbs	0.9	6.4	74.8	102.3	32.2	-0.4	69.6

A beef bull that should be a tremendous female maker. 58A is still in production and has done very well for us and still looks like a 5-year-old. 29N should have the ability to sire some powerful progeny.



SIRE
Twin Brae Western Frontier 8F



84 BLCC MR JOKER 62N

CA-1546285 BLCC 62N 20/2/2025 HORNED

STARWEST POL BLUEPRINT
CDH MR JOKER 5J
DOUBLE BAR D 229Z

SILVER LAKE DEALER 60B
BLCC MISS DEALER 49J
BLCC MISS BARONESS 199C

ANCHOR "T" RUSTY 59G
PHS HOMOZYGOUS XCEPTIONAL
LFS POL BALBOA 40U
DOUBLE BAR D LOLITA 256X
CHAMPS ROMANO
BLCC MISS STRIDE 57W
BLCC MR BARON 183Z
GRINALTA'S GRANDMA MOSES

BWT	WWT	CE	BW	WW	YW	MILK	MCE	MWWT
92 lbs	800 lbs	8	5	72.4	100.7	34.3	2.3	70.5

A big volume herdsire in the making. 62N is tremendously deep, full of muscle and capacity, great colored and backed by a powerful female as his dam. This bull should add lots of performance and lots of maternal.



85 BLCC MR GUNFIRE 68N

CA-P1546284 BLCC 68N 21/2/2025 POLLED

FGAF CAMPFIRE 119E
ROD GUNFIRE 3H
SIBELLE POL RUMY 9E

TWIN BRAE WESTERN FRONTIER 8F
BLCC MISS FRONTIER 134J
BLCC MISS POL EVEREST181T

ANCHOR D RAPTOR 392C
FGAF KANANASKIS 945Z
SIBELLE SPARTACUS 8A
SIBELLE POL MOLLY 7B
BEL WESTERN UNION 5Z
TWIN BRAE MS DIDI 78Z
DOUBLE BAR D EVEREST 4R
IPU 4G MS KLYBER 54L

BWT	WWT	CE	BW	WW	YW	MILK	MCE	MWWT
94 lbs	796 lbs	3.4	5.4	80	110.8	32.8	0	72.8

HOMO POLLED TEST PENDING.

AN exciting prospect sired by Gunfire. 68N is very thick muscled, wide across his top, long bodied and will mature to be an impressive herdsire. Triple polled, and comes from a great cow family, going back to the 54L Klyber cow we had such success with.

A polled fullblood right for the times. Dark red, big goggles, lots of muscle and eye appeal and comes from a great cow. 101N will sire some performance and uniformity in his progeny and his daughters will be fantastic.



86 **BLCC MR VFRONTIER 101N**
CA-P1546288 BLCC 101N 25/2/2025 POLLED

BEL WESTERN UNION 5Z
TWIN BRAE WESTERN FRONTIER 8F
TWIN BRAE MS DIDI 78Z

STARWEST TOTAL VALUE
BLCC MISS VALUE 329G
BLCC MISS JUGGERNAUT 219A

RICKARDSTOWN JUMBO
BEL HELGA 9TH
GIBBY'S REAL DEAL 25T
TWIN BRAE MS HUGO 178X
DOUBLE BAR D SPITFIRE 20X
PHS POLLED WINFALL 27W
MFI JEREMIAH 9022
BLCC MISS GRANDE 107T

BWT	WWT	CE	BW	WW	YW	MILK	MCE	MWWT
98 lbs	805 lbs	2.3	5.8	77.3	106.5	34.4	-1.4	73.1

87 **BLCC MR GUNFIRE 105N**
CA-P1546293 BLCC 105N 25/2/2025 POLLED

FGAF CAMPFIRE 119E
ROD GUNFIRE 3H
SIBELLE POL RUMY 9E

MFI JEREMIAH 9022
BLCC MISS JUGGERNAUT 352E
BLCC MISS GRANDE 101W

ANCHOR D RAPTOR 392C
FGAF KANANASKIS 945Z
SIBELLE SPARTACUS 8A
SIBELLE POL MOLLY 7B
GIBBONS JEREMIAH
MFI PETRA 2093
SU RIO GRANDE 55R
BLCC MISS JASPER 279S

BWT	WWT	CE	BW	WW	YW	MILK	MCE	MWWT
94 lbs	790 lbs	3.3	5.6	77.3	109.2	31.1	0.6	69.8



A tremendous son of Gunfire with a great quarter and wide top. 105N will have the ability to add pounds and performance to his offspring. Having a great cow that raised him doesn't hurt either. 352E has been big on production for us.



MATERNAL GRANDSIRE
MFI Jeremiah 9022



The only son of Hierarchy we have in the sale but he is a great one! 187N has turned heads in the bull pen for his impressive phenotype, pigment, style, and eye appeal. The dam has been a great producer for us and comes from a great female from our flush program. We have been very impressed with this sire group.



SIRE Sunville Hierarchy 212L

88 **BLCC MR HEIRARCHY 187N**
 CA-1546242 BLCC 187N 8/3/2025 HORNED

WOLFE HIERARCHY FF 908H
SUNVILLE HIERARCHY 212L
 SUNVILLE FELICITY 20F

SILVER LAKE DEALER 60B
BLCC MISS SL DEALER 37F
 WCC WELLS' WEDNESDAY 927W

BLACK GOLD ELEVATION 20E
 WOLFE VICTORIA FF 908C
 FGAF AGREEMENT 030D
 SUNVILLE KANDIS 61D
 CHAMPS ROMANO
 BLCC MISS STRIDE 57W
 CEN RENEGADE 504R
 SS SAFARA 13S FF

BWT	WWT	CE	BW	WW	YW	MILK	MCE	MWWT
92 lbs	788 lbs	3.4	4.9	75.2	104.3	34	2.7	71.6

89 **BLCC MR FRONTIER 205N**
 CA-P1546298 BLCC 205N 11/3/2025 POLLED

BEL WESTERN UNION 5Z
TWIN BRAE WESTERN FRONTIER 8F
 TWIN BRAE MS DIDI 78Z

ALLM COLOSSAL 25U
BMS TRACY 36G
 BMS POL ZAILA 15D

RICKARDSTOWN JUMBO
 BEL HELGA 9TH
 GIBBY'S REAL DEAL 25T
 TWIN BRAE MS HUGO 178X
 BBBG WRANGLER 3S
 FGAF ADRIA 126P
 ROLLING ACRES TORQUE
 MFI PETRA 2093

BWT	WWT	CE	BW	WW	YW	MILK	MCE	MWWT
96 lbs	765 lbs	1.9	6.5	77	101.7	37.3	-1.3	75.8

A polled son of Western Frontier that will mature to be a quality herdsire and add performance, predictability and profit to any program. 36G has produced very well and continues to do so.



RED REFERENCE SIRES



REF WHEATLAND AFFINITY 8196F
PG1252370 LER 8196F 16/4/2018 POLLED

BWT	WWT	CE	BW	WW	YW	MILK	MCE	MWWT
84 lbs	718 lbs	12.1	0.6	64.4	78.8	18.7	6.6	50.9



REF BOUNDARY RIO GRANDE 72J
PG1351880 BOUN 72J 15/1/2021 HOMO POLLED

BWT	WWT	CE	BW	WW	YW	MILK	MCE	MWWT
107 lbs	806 lbs	-0.6	7.3	88.5	140.9	19.1	-1.7	63.4



REF SKORS BRAVEHEART 289G
PG1289835 ETZ 289G 8/2/2019 POLLED

BWT	WWT	CE	BW	WW	YW	MILK	MCE	MWWT
104 lbs	981 lbs	5.1	4.4	91.1	135.8	24.6	2.3	70.2



REF WHEATLAND BULL 921G
PRS1306730 LER 921G 26/1/2019 POLLED

BWT	WWT	CE	BW	WW	YW	MILK	MCE	MWWT
89 lbs	962 lbs	9.7	1.3	77.2	106.9	30.3	4.1	68.9



REF BLCC MR CROCKET 218J
PG1379123 BLCC 218J 2/3/2021 HOMO POLLED

BWT	WWT	CE	BW	WW	YW	MILK	MCE	MWWT
96 lbs	805 lbs	-0.5	7.6	88.4	137	26.3	0.5	70.5



REF SUNNY VALLEY MAVERICK 8L
PG1443654 WLLS 8L 1/1/2023 POLLED

BWT	WWT	CE	BW	WW	YW	MILK	MCE	MWWT
78 lbs	810 lbs	15.3	-0.2	78.4	114.5	24.6	9.9	63.8

BLACK REFERENCE SIRES



REF SUN RISE LEGAL CUSSTODY 28H
BPTG1304242 JTC 28H 24/1/2020 POLLED

BWT	WWT	CE	BW	WW	YW	MILK	MCE	MWWT
98 lbs	1010 lbs	7.6	3.3	84.3	125.7	29.4	5.8	71.6



REF SUNNY VALLEY STORM 56K
BPG1392067 WLLS 56K 20/1/2022 POLLED

BWT	WWT	CE	BW	WW	YW	MILK	MCE	MWWT
100 lbs	875 lbs	5.8	3.3	92.8	134	29.1	6.4	75.5



REF BLCC MR 5015C 65H
BPG1342297 BLCC 65H 6/2/2020 HOMO POLLED HOMO BLACK

BWT	WWT	CE	BW	WW	YW	MILK	MCE	MWWT
92 lbs	925 lbs	4	3.6	92.3	137.1	20.5	1.1	66.7



REF BLCC MR RIDDLER 1J
BPTG1490617 BLCC 1J 9/1/2021 POLLED

BWT	WWT	CE	BW	WW	YW	MILK	MCE	MWWT
92 lbs	-	4.7	3.9	93.1	146.4	16.5	4.1	63.1



REF R PLUS 5015C
BPG1160943 LRPS 5015C 24/1/2015 POLLED

BWT	WWT	CE	BW	WW	YW	MILK	MCE	MWWT
92 lbs	910 lbs	8.4	1.7	90	140.6	14.8	1.1	59.8

FULLBLOOD REFERENCE SIRES



REF BLACK GOLD STUEY 264H

1327876 CLNO 264H 30/3/2020 HORNED

BWT	WWT	CE	BW	WW	YW	MILK	MCE	MWWT
95 lbs	648 lbs	7.6	4.6	72.2	108.6	39.8	3.9	75.9



REF TWIN BRAE WESTERN FRONTIER 8F

P1289278 BGD 8F 14/10/2018 HETERO POLLED

BWT	WWT	CE	BW	WW	YW	MILK	MCE	MWWT
95 lbs	800 lbs	2.6	5.9	76.5	98.4	35	-1.1	73.3



REF SUNVILLE HIERARCHY 212L

1455995 SVS 212L 4/1/2023 HORNED

BWT	WWT	CE	BW	WW	YW	MILK	MCE	MWWT
104 lbs	950 lbs	2.7	4.9	80.9	112.1	33.2	3.3	73.7

TERMS & CONDITIONS

Terms: The terms of the sale are cash or cheque, payable at par at the sale location. The right of property shall not pass until after settlement has been made; no invoicing on buyers in attendance unless previous arrangements have been made. Every animal sells to the highest bidder and in cases of disputes, the auctioneer's decision will be final. Announcements from the auction block will take precedence over the printed matter in the catalogue. Current exchange rates will be announced sale day. All monies are in Canadian funds.

Certificate of Registration: Each animal will carry papers issued by the Canadian Simmental Association. A certificate of registry duly transferred will be furnished to the buyer for each animal after payment has been made.

Pedigree Estimates: Pedigree Estimates (PE) are created on the projected mating of the animal's sire and dam based on averages of the two, creating estimated values that do not hold the same accuracy of actual EPDs issued from the association and should be used as such.

Health: All animals in the sale have met all necessary health requirements.

Guarantee: Each animal becomes the purchaser's risk immediately after the animal is sold. All animals in this sale will be sold under the terms and guarantees set forth by the Canadian Simmental Association with regards to health, freedom from defects and from both reproductive and specific genetic unsoundness.

Liabilities: All persons attend the sale at their own risk. The seller, facility owner and sale manager assume no liability, legal or otherwise, for any accidents that occur. It is understood that T Bar C Cattle Co. (2013) Ltd. is acting only as a medium between buyer and seller and is not responsible for any failure on the part of either party to live up to his obligations. Neither does

T Bar C Cattle Co. (2013) Ltd. assume any financial obligations to collect or enforce collection of any monies between parties and any legal action that may, in exceptional cases, be taken must be between the buyer and the seller. T Bar C Cattle Co. (2013) Ltd. assumes no responsibility for any credit extended by the seller to the buyer. The buyer must look to the seller for fulfillment of all guarantees and representations made hereunder.

Phone, Mail, Wire Bids: Bidders unable to attend the sale may phone, wire or mail their bids and instructions to the sale manager, auctioneer or special representatives. Bids must be received in sufficient time prior to the sale.

Insurance: We strongly recommend that insurance is purchased for full value.

Errors: All announcements at sale time, written or oral, supersede any written material in the catalogue.

Delivery: Shipping assistance will be given in making shipment after sale but sale management or seller assumes no risk. Bonchuk Farms will assist in arranging trucking to central points across Canada. All costs associated with shipping will be the responsibility of the new owner. Each animal becomes the risk of the purchaser as soon as sold.

Herd Health: All bred cattle received Express 5 before breeding and Total Herd has been on the Express program for over 10 years, making the ranch BVD-free. Bred heifers also received black leg vaccine before breeding. All pregnant cattle have their first shot of Scour-Bos vaccine and treated with Ivomec.

Bonchuk Farms reserve the right to draw semen on any of the sale bulls for in herd use at the buyer's convenience.

Return Undeliverable
Canadian Addresses to:

T Bar C Cattle Co. Ltd
Box 2330
Warman, SK
S0K 4S0



YOUR
Simmental
SOURCE

