

# 20



---

# CROSSROAD

---

---

# FARMS

20<sup>th</sup> ANNUAL BULL & FEMALE *Sale*

Wednesday February 25, 2026 at 1:00pm CST | At The Farm, Shell Lake, SK



# WELCOME from Crossroad Farms

20 years ago, we took a risk to host our own bull sale on the farm in Shell Lake, Sask. We hosted that first sale in 2006, and we have never looked back. There is nothing better than having your customers viewing the bulls in their environment, and to be able to host everyone here at home, where we can provide the hospitality we pride ourselves on. So much has changed in the last 20 years. Our family has grown up, roles have changed and grown between the three generations. We have battled health concerns and have lost loved ones who were a part of who we are. The Bull Sale is a culmination of our hard work and decision making and we enjoy having our customers, good friends and neighbours by our side for every sale to celebrate with us.

The one thing that remains consistent is our passion for what we do. It runs deep in all of us, and we truly love our job. People always say, if you love what you do, you won't work a day in your life but I don't believe that's entirely true. When you love what you do, you choose to work more and work harder, and you will put everything you have into what you do. The difference is you enjoy your job, and it fulfills you. We are excited to go to work everyday and the best part is we get to do it as a family.

Although this year marks 20 years of sales here on the farm, we have been breeding purebred Simmentals for just over 30 years. It has been a goal set in stone from the beginning to fulfill our values to maintain our type and kind of Simmental Cattle. We concentrate on preserving the large frame in our cow herd, all while having no absence of power, with square, dependable feet and udders. The set of bulls on offer this year replicate these values to a "T". We have always offered a large number of sire groups every year, allowing customers to pick and choose from a substantial group for what suits their program. We have heavily invested in our ET program over the past couple of years, implanting 120 embryos this past year. We have flushed a handful of our strongest and most consistent females, along with sourcing top-tier genetics from fellow breeders. Between new and exciting sire groups in all three colours and over 23 ET bulls on offer, the strength and quality of this group is off the charts. This is a set we are extremely proud to produce, and we are eagerly expecting the rush of customers touring through this year's bulls.

We would like to extend an invitation to join us on Feb 25 at our home (the Sale Barn) to be a part of this year's sale and to help us celebrate 20 years of hard work, great customers and friends, and the cattle industry. The meal will be delicious, the coffee hot, the beer cold, and the conversation and fellowship will be worth the drive.

*The Woytiuk Family*

**JODY & JACKIE WOYTIUK**  
**OLIVIA, SHELBY, JAICI, COOPER**  
Jody's Cell: (306) 227-9910

**GERALD & LAURIE WOYTIUK**  
Phone: (306) 427-4422  
Gerald's Cell: (306) 883-7272

[www.crossroadfarms.ca](http://www.crossroadfarms.ca)

[crossroadfarms@sasktel.net](mailto:crossroadfarms@sasktel.net)



**20<sup>th</sup> ANNIVERSARY**  
*Sale Credits*  
**\$5000 X 2**

Over the past year, we have been thinking of a way we could thank our customers and do something to give back to those who have put their trust in our program. We will be giving out two \$5000 credits towards the purchase of a bull or heifer in this year's sale to two registered bidders in attendance at our 20th Annual Sale. The draw will be made just before the sale.



# Crossroad Farms

## 20th Annual Bull & Female Sale

On the Farm, Shell Lake, Sask.

**Wednesday, FEB.25, 2026 at 1:00 p.m. CST**

Directions to the Farm: 2 miles east of Shell Lake on Hwy #3, and 4 miles south on RR# 3080  
OR 4 miles south of Shell Lake on Hwy #12 and 2 miles east on RR #492. Watch for signs.

Physical Address: 49204 RR 3080

**SALE TIME: 1:00 p.m. sharp CST, lunch at 11:30**

*steak & perogies – live entertainment following the sale*

**On Offer: 91 Bulls & 14 Open Replacement Heifers**

**Fullblood, Full Fleck, Red & Black Simmental Beef Bulls**

**5% Discount on 3 or more bulls**

### Sale Day Phones:

Jody Woytiuk .....cell: (306) 227-9910

Gerald Woytiuk..... cell: (306) 883-7272

### Sales Consultants:

Bohrson Marketing Services:

Scott Bohrson.....(403) 370-3010

Martin Bohrson.....(306) 220-7901

Rob Voice .....(306) 270-6082

Darryl Snider ..... (780) 385-5561

### Sale Staff

#### Auctioneer:

Steve Dorran ..... cell: (760) 972-7736

#### Ring Service:

Jim Pulyk, NLS ..... (780) 787-0646

Dory Gerrard .....(403) 302-1016

#### Simmental Representative:

Bruce Holmquist GM-CSA

**"Sight Unseen" Purchase Program:** If you are unable to attend the sale but are interested in our bulls give Gerald or Jody a call, they would be pleased to serve you personally. They will go over the bulls with you and recommend which ones would best suit your program. Bulls are guaranteed to meet your approval when delivered.

**Insurance:** Steen Agencies will be in attendance or can be contacted at (306) 887-2020; Cell: (306) 961- 6359, Email: [nhawres@steenagenciesinsurance.com](mailto:nhawres@steenagenciesinsurance.com). Each animal becomes the risk of the purchaser as soon as they are sold. **ALL BULLS STAYING AT CROSSROAD FARMS UNTIL DELIVERY MUST BE INSURED.**

**VIDEOS WILL BE POSTED IN EARLY FEBRUARY FOR VIEWING**



**Videos:** Sarah Hasson, Golden Thread Images, (306) 681-5340

**Catalogue Design:** Cattlepics.com, Patricia Shewchuk (780) 603-3066

**Crossroad Farms 100% Guarantee:** All bulls are guaranteed to be satisfactory breeders in accordance with the Canadian Simmental Assoc. guidelines. Should a problem occur barring physical injury or mismanagement, a bull of equal value will be provided or a credit will be issued towards the purchase of another bull. We always have back-up bulls for our customers and we guarantee you will have a bull to service your cows.

**Delivery:** Free delivery in Alberta, Saskatchewan and Manitoba to central points, we will try our very best to deliver them right to your yard. Cost shared arrangements can be made to other destinations. Delivery date is at the seller's convenience, most will be delivered mid-March to mid-April.

**Welcome U.S. Buyers:** The U.S exchange rate will be announced prior to the sale. Crossroad Farms will assist with obtaining all necessary health testing, vet examinations, and paperwork. Crossroad Farms will deliver bulls to the border, or we will make arrangements for trucking. The buyer is responsible for the export costs.

**Terms & Conditions & In-Herd Semen Use:** All bulls sell under the standard terms and conditions as set forth by the Canadian Simmental Association; copies are available upon request. All bulls will sell in their entirety. Crossroad Farms reserves the right to collect semen on any bull that is sold through the sale for in-herd semen use. Semen collection will be at Crossroad Farms expense, and at the buyer's convenience.

**Accommodations:** [www.auroraskiesresorts.com](http://www.auroraskiesresorts.com), 303-427-5668 [auroraskiesresorts.net](http://auroraskiesresorts.net)

**EPD Explanation EPDs are "Expected Progeny Differences":** They are a useful tool in selection. EPDs incorporate the individual animal with its ancestry performance. EPDs do not compare across cattle breeds. They are individual based per breed. EPDs indicate a probable variance above or below breed average for that trait for a given bull's progeny. The accuracy of EPDs for calendar year bull calves is generally about 20% (one out of five times) so use it cautiously as one of several selection tools.

### JANUARY SIMMENTAL EPD BREED AVERAGE

CE	BW	WW	YW	MILK	MCE	MWWT
7.2	3.4	79.2	115.3	26.1	4.0	65.6



# *Red & Black*

## **REFERENCE SIRES**



**CROSSROAD VALID 10L**



**LCDR AMERICAN RED 99E**



**RED TOP ALPHA 77L**



**MRL SYSCO 14D**



**CIRCLE G REGULATOR 70L**



**SPRINGCREEK SHERLOCK 140K**



**WFL WINCHESTER 90L**



**IPU 30-06 47K**



**CROSSROAD CONNECTED 12G**



**CROSSROAD BLACK MISSILE 75K**



**MRL BATTLEFIELD 249J**

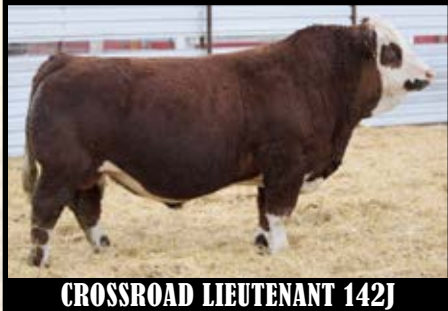


**GRASS ROOTS ESTEEM 204K**



# Fullblood & Full Fleck

## REFERENCE SIRES



**CROSSROAD LIEUTENANT 142J**



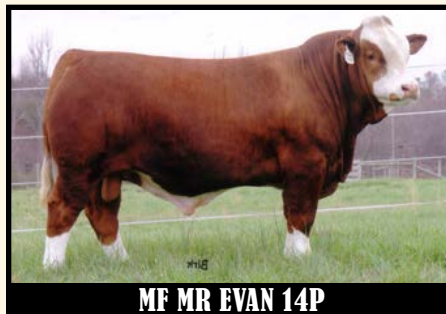
**KEETS LAUNCH 28L**



**BAR 5 SA HARRACH 801P**



**BRSF FB POL BATMAN 45H**



**MF MR EVAN 14P**



**SILVER LAKE JENNER 9J**



**SILVER LAKE JOSE CUERVO 137J**



**KHG KEON 27K**



**VIRGINIA MILLER 41K**

## Health

Dr. Blair Simonson continues to do exceptional reproductive work for our program. From embryo work to semen testing, he does a flawless job every year with astounding results. The quality of our herd would not be where it is today without his expertise. Our overall herd health is looked after by Dr. Justin Hodgson at Farm Docs in Spiritwood. We can't thank him enough for his quick responses, reliable knowledge, and ambition to take on our program.

Crossroad bulls are developed on a TMR ration consisting of cereal silage, chopped hay, super oats, and a custom-formulated bull supplement. This ration optimizes longevity and ensures proper development from mass and structure to testicle development. All bulls will be vet checked, scrotal measured, and semen tested. Sale day weights and scrotal measures will be posted prior to the sale. Bulls were treated with selenium, vitamin AD, toltrazuril, and nasalgel as newborn calves.

**June-** Fermicon7/Somugen, Vistaonce

**September-** Vistaonce booster, Ivermectin

**December-** Cylence for lice, first shot of Fusoguard for footrot, and a second dose prior to delivery



1

CROSSROAD *Raleigh* 118N

PTG1503765

CRF 118N

JAN 12 2025

POLLED PB

PERKS POTENT 309H  
S: CIRCLE G REGULATOR 70L  
KS MISS RED RIDGE E48

LCOR AMERICAN RED 99E  
D: CROSSROAD HILDE 186H  
CROSSROAD DELORAINE 125D



Donor: Crossroad Hilde 186H

CE  
2.9  
BW  
3.0  
WW  
91.1  
YW  
132.9  
MILK  
27.2  
MCE  
1.3  
MWWT  
72.8

BW  
103ET  
SEP01  
WW  
968  
205 ADJ  
868  
365 ADJ  
1566

It was without a doubt that this flush group of Regulator X Hilde sons needed to lead off the catalogue. The Regulator bull was purchased from Circle G Simmentals in 2024, and boy, has he left his mark with this first set. With eight sons and one daughter on offer, the quality and uniformity are outright next to none. These three flush brothers hail from our Crossroad Hilde Donor cow, pictured above. This is the type of female that we would love to have a pasture full of. Large framed, great mass of bone, pronounced extension, maximal length of body, and a tidy udder that is built to last. These bulls are a great representation of what we strive to produce, and we are proud to offer them to the beef industry. 118N is longer than a freight train, with a big, solid foot and thorough muscling. This is a bull that is going to mature into an attractive, powerful herd sire that is indisputably going to add pounds to his progeny. ~Homo Polled~

2

CROSSROAD *Recoil* 52N

PTG1503763

CRF 52N

JAN 5 2025

POLLED PB

PERKS POTENT 309H  
S: CIRCLE G REGULATOR 70L  
KS MISS RED RIDGE E48

LCOR AMERICAN RED 99E  
D: CROSSROAD HILDE 186H  
CROSSROAD DELORAINE 125D



CE  
1.0  
BW  
5.2  
WW  
109.0  
YW  
169.0  
MILK  
27.2  
MCE  
1.6  
MWWT  
81.7

BW  
100ET  
SEP01  
WW  
1034  
205 ADJ  
902  
365 ADJ  
1412

An extremely masculine, deep-bodied, big ribbed Regulator son. This group of flush brothers has been nothing but entertaining to watch throughout the summer. We have a really impressive video of this calf from August that shows the amount of quality and performance in this bull. He sits in the top 1% for both WW and YW, guaranteeing a heavyweight calf crop. Four flush sisters to these bulls are sitting in the replacement pen at home, each of them screams cow power, and we cannot wait to see them enter production. Make sure to take a look at them on sale day! ~Homo Polled~



3

CROSSROAD *Reconcile* 92N

PTG1503748

CRF 92N

JAN 9 2025

POLLED PB

CE  
2.5  
BW  
3.9  
WW  
91.1  
YW  
137.4  
MILK  
27.2  
MCE  
1.0  
MWWT  
72.8

BW  
99ET  
SEP01  
WW  
897  
205 ADJ  
796  
365 ADJ  
1366



PERKS POTENT 309H  
S: CIRCLE G REGULATOR 70L  
KS MISS RED RIDGE F48  
LCOR AMERICAN RED 99E  
D: CROSSROAD HILDE 186H  
CROSSROAD DELORAINE 125D

This third flush brother on offer definitely took after his dam. Tons of extension, depth, and middle. This bull has enough thick dark red hair for all of his brothers, too! He's excellent on the move, with a pile of fluidity and functionality in his structure. Once again, there's no lack of performance in this genetic package, with a great WW and YW, only adding to the consistency of these brothers. Take your pick of these three standouts, and be sure to check out their paternal sister on offer- Lot 92. ~Homo Polled~

4

CROSSROAD *Red Dawn* 65N

PG1499387

CRF 65N

JAN 6 2025

POLLED PB

CE  
2.7  
BW  
4.5  
WW  
96.8  
YW  
136.8  
MILK  
26.2  
MCE  
4.0  
MWWT  
74.6

BW  
100  
SEP01  
WW  
913  
205 ADJ  
801  
365 ADJ  
1566



PERKS POTENT 309H  
S: CIRCLE G REGULATOR 70L  
KS MISS RED RIDGE F48  
RF CAPACITY 742E  
D: CROSSROAD HIGH CLASS 39H  
CROSSROAD DUSTY 430D

This guy might take the cake for the darkest red bull in the offering this year. A grandson of our Crossroad Dusty donor cow makes for superior maternal strength. There is no lack of frame and milk in this bloodline. He definitely took up some of his sire's qualities, a well-balanced profile, great hair coat, and a masculine skull. 65N's dam has had a standout production record, with her only female retained, and her other two sons selling through the sale the last two years, averaging \$14,750. 65N has exemplary WW and YW performance, and we have no doubt he is going to make a great breeding piece. ~Homo Polled~



5

CROSSROAD *Riptide* 109N

PTG1503584

CRF 109N

JAN 11 2025

POLLED PB

PERKS POTENT 309H  
S: CIRCLE G REGULATOR 70L  
KS MISS RED RIDGE E48

LFE HALL PASS 851G  
D: LFE RS DREAMLADY 634J  
LFE RS DREAMLADY 643C



CE  
2.6  
BW  
5.0  
WW  
96.3  
YW  
145.1  
MILK  
18.4  
MCE  
0.8  
MWWT  
66.6

BW  
104ET  
SEP01  
WW  
964  
205 ADJ  
893  
365 ADJ  
1490

109N is a standout young prospect out of the high-selling female from the 2023 Lewis Production Sale, LFE RS Dreamlady 634J. She was flushed to Regulator in 2024, with the outcome of this bull calf, which has us very excited for her future here. Her first calf just sold as a bred heifer for \$23,000 to Bar CL and 2K Springs through the Border City Sale, proving the consistency and market appeal of this lineage. Riptide is massive middled, deep ribbed, stout, has excellent hair, and a balanced, attractive look from every angle. With his strong pedigree, proven maternal backing, and impressive physical presence, 109N Riptide is a bull with tremendous potential and one we are very excited to see develop. ~Homo Polled~

6

CROSSROAD *Rockford* 129N

PTG1503558

CRF 129N

JAN 14 2025

POLLED PB

PERKS POTENT 309H  
S: CIRCLE G REGULATOR 70L  
KS MISS RED RIDGE E48

CROSSROAD DEGREE 294A  
D: CROSSROAD DUSTY 430D  
LPN STARDUST 694R



CE  
3.8  
BW  
4.5  
WW  
103.9  
YW  
152.0  
MILK  
29.6  
MCE  
6.8  
MWWT  
81.6

BW  
101ET  
SEP01  
WW  
1024  
205 ADJ  
929  
365 ADJ  
1563

129N is the exceptional result of a flush from one of our all-time favorite cows, Crossroad Dusty 430D. She is a cow we consider elite, with three daughters retained in the herd and five sons sold through the bull sale, consistently being highlighted every year. Dusty is huge-framed, and 129N clearly reflects her powerful stature. He is long-spined, wide-topped, structurally sound, and carries a big, square foot. Rockford also boasts an actual weaning weight of 1,024 lbs, ranking him in the top 1% of the for actual WW. With a beautiful mother backing him, outstanding numbers, and the proven influence of Regulator, Rockford is a bull with the genetics, phenotype, and presence to make a lasting impact in any herd. ~Homo Polled~



7

**CROSSROAD *Reaper* 122N**

PG1503398

CRF 122N

JAN 13 2025

POLLED PB

CE  
4.4  
BW  
6.0  
WW  
96.7  
YW  
143.9  
MILK  
23.1  
MCE  
3.7  
MWWT  
71.5

BW  
104  
SEP01  
WW  
996  
205 ADJ  
928  
365 ADJ  
1616



PERKS POTENT 309H  
S: CIRCLE G REGULATOR 70L  
KS MISS RED RIDGE F48

LFE STRATTON 3094F  
D: CROSSROAD KALINDA 38K  
IPU MS. CODE RED 249A

What's not to like about an easy doing, high performing, dark red blaze face bull? 122N has been a standout since birth, always one step ahead in terms of maturity. His dam is a powerful, long-bodied Stratton daughter out of the prolific IPU Code Red Cow that has had such a huge impact on our herd. In terms of productivity, this is a cow family that doesn't miss. 122N is really bold in terms of his make- immense depth and length of body, stout stature, and a great foot underneath him. He was a part of our Reserve Champion pen of three bulls at Edam, and there is no doubt why. He finds himself in the top 5% in both WW and YW, and he's only gotten better as time passes. ~Homo Polled~

8

**CROSSROAD *Rogue* 200N**

PG1503544

CRF 200N

JAN 28 2025

POLLED PB

CE  
3.3  
BW  
4.7  
WW  
98.5  
YW  
143.7  
MILK  
24.4  
MCE  
3.1  
MWWT  
73.7

BW  
104  
SEP01  
WW  
869  
205 ADJ  
830  
365 ADJ  
1563



PERKS POTENT 309H  
S: CIRCLE G REGULATOR 70L  
KS MISS RED RIDGE F48

SIBELLE SPARTACUS 8A  
D: CROSSROAD EMYLIN 125F  
IPU MS. CODE RED 249A

This is the eighth consecutive calf of this caliber from Shelby's Emylin cow. As a late January-born calf, he has shown tremendous growth. He's got pounds written all over him with a yearling weight of 1350lbs and a commendable ADG. His dam has been a no-miss producer. Sending three top-quality sons through the sale, averaging a worthy \$14,800. This bull carries as much potential as any with a big square frame, solid foot, great muscling, and that fancy facial marking. This is one that will blow you away come sale time, and we can't wait to see how he comes along. ~Hetero Polled~



9

CROSSROAD *Wrecker* 49N

SG1498584

CRF 49N

JAN 3 2025

POLLED/SCURS PB

MADER WALK THE LINE 92J  
S: CROSSROAD WESTERN 176L  
SPRINGCREEK LADY 139HSIBELLE SPARTACUS 8A  
D: CROSSROAD GARCIA 74G  
IPU MS. CODE RED 249A

CE  
4.8  
BW  
3.3  
WW  
85.5  
YW  
120.1  
MILK  
22.7  
MCE  
4.4  
MWWT  
65.5

BW  
99  
SEP01  
WW  
908  
205 ADJ  
788  
365 ADJ  
1460

We're kicking off our Western sire group with a bull we believe is as well-rounded as you can build one. 49N turned heads all summer during pasture tours; his exceptional length, strong square foot, overall balance, and eye appeal are exactly what we strive to produce. His dam has been a consistent powerhouse, sending five sons through our bull sale in the last four years, averaging \$13,625. His sire, Crossroad Western, is out of our donor cow Spring Creek Lady 139H. A female who continues to add to her track record, having multiple feature bulls in this year's sale. 49N is backed by some of the most proven genetics in the industry, including Spartacus, Walk the Line, Blue Chip, and Code Red. This is the kind of bull that will add pounds to your steer calves while also producing high-quality, long-lasting females that will stay in your herd for years. ~**Hetero Polled**~

10

CROSSROAD *Wagner* 8N

PG1498438

CRF 8N

JAN 1 2025

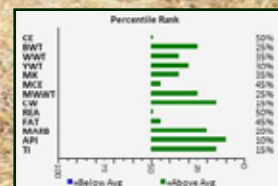
POLLED PB

MADER WALK THE LINE 92J  
S: CROSSROAD WESTERN 176L  
SPRINGCREEK LADY 139HSPRINGCREEK LADIES MAN 90E  
D: SPRINGCREEK POCAHONTAS 93J  
IPU 308Z POCAHONTAS 25E

CE  
7.0  
BW  
2.0  
WW  
83.0  
YW  
122.9  
MILK  
28.9  
MCE  
4.3  
MWWT  
70.4

BW  
89  
SEP01  
WW  
935  
205 ADJ  
814  
365 ADJ  
1585

Our second Western son is a hard-made, long-bodied bull with a thick hair coat and the kind of natural muscle and substance that will make a big impact in any herd. Unfortunately, 8N lost his dam in March (a big thank-you to Shaun Stadnyk for loaning us a cow), yet he still managed to wean off at an impressive 935 pounds. When a calf overcomes that kind of setback and still performs, you know he's going to add pounds to your calf crop. 8N is nearly identical to his sire in both structure and temperament. His late dam was a bred heifer we purchased out of the Spring Creek dispersal, and we sure wish we could have gotten a few more calves from her. With a strong set of EPDs, reliable genetics, and tremendous growth, 8N is truly a bull you won't want to miss. ~**Homo Polled**~





11

CROSSROAD *Constitution* 137N

PG1503413

CRF 137N

JAN 15 2025

POLLED PB

CE  
5.4  
BW  
3.8  
WW  
88.7  
YW  
136.7  
MILK  
31.1  
MCE  
3.5  
MWWT  
75.5

BW  
96  
SEP01  
WW  
917  
205 ADJ  
865  
365 ADJ  
1582



This is the only American Red son we have on offer this year. We have sold many of his sons over the years, and several daughters are working in the herd that showcase incredible udder quality. Hoping for another daughter to add to our powerful Audrey cow family, American Red was intentionally chosen long before breeding season as the perfect sire that would stack even more maternal strengths into this fertile, productive bloodline. But we got a bull, and now you get what we were so anxiously waiting for. Lots of potential here, come see for yourself, there is no doubt that this bull will raise some of your best. We are crossing our fingers that his dam gives us a daughter this year, bred to Crossroad Ultimate for early January, bull or heifer, it's guaranteed to be another good one. ~Homo Polled~

CDI ABUNDANCE 391C  
S: LCDR AMERICAN RED 99E  
HSF RED FORTUNES SIS 33  
CROSSROAD CONNECTED 12G  
D: CROSSROAD KELSEA 152K  
CROSSROAD AUDREY 283A

12

CROSSROAD *Commerce* 173N

PG1503517

CRF 173N

JAN 21 2025

POLLED PB

CE  
6.0  
BW  
4.6  
WW  
75.4  
YW  
102.3  
MILK  
27.5  
MCE  
6.1  
MWWT  
65.2

BW  
105  
SEP01  
WW  
911  
205 ADJ  
857  
365 ADJ  
1439



The first KOP Crosby calves would have hit the ground fifteen years ago, and at the time of writing this footnote, there are over 900 registered progeny. Many elite cows in the industry have Crosby in their pedigree, and it continues to be a trusted and sought-after bloodline that guarantees quality. We are pleased to offer you our only Crosby son this year, loaded with potential from both sides of his pedigree. If you are building a cow herd, these are some genetics that would stamp "mama cow" on every replacement you keep. Some super strong tried and true maternal strength's here to consider for your next herd sire purchase. ~Homo Polled~

MURHEAD LIVE WIRE 95R  
S: KOP CROSBY 137W  
KOP MS BENIGIE 6P  
CROSSROAD RED STEINSON 9E  
D: CROSSROAD JENNA 40J  
CROSSROAD FREEDA 36F



13

CROSSROAD *Cincinnati* 235N

PG1503806

CRF 235N

FEB 9 2025

POLLED PB

CE  
9.7  
BW  
4.0  
WW  
82.7  
YW  
126.5  
MILK  
27.0  
MCE  
4.6  
MWWT  
68.4

BW  
85  
SEP01  
WW  
816  
205 ADJ  
848  
365 ADJ  
1483



S: CROSSROAD RED STEINSON 9E  
PERKS BLACK DOLL 1121Y  
D: CROSSROAD JULIA 661  
T33 MR FLASH 13F  
CROSSROAD GROOVY 22G

A February born bull that is a bit of a celebrity. He has the same dam as Crossroad Ultimate that sold at last year's sale for \$120,000 to Siroski Simmentals and Canadian Sires. Since that sale, she went on to produce 25 embryos on her first try, then had these twins, and bred back again for 2026. This young bull boasts 11/13 above-average traits in his EPD profile. He is also a son of Crossroad Connected, who has produced many exceptional sons and daughters throughout the industry. Dark red, structurally sound and stylish, 235N will be a standout on sale day. ~Homo Polled~

14

CROSSROAD *Crusher* 202N

SG1503777

CRF 202N

JAN 29 2025

POLLED/SCURS PB

CE  
5.6  
BW  
2.8  
WW  
68.2  
YW  
94.4  
MILK  
29.5  
MCE  
5.3  
MWWT  
63.6

BW  
98  
SEP01  
WW  
865  
205 ADJ  
836  
365 ADJ  
1425



S: CROSSROAD RED STEINSON 9E  
PERKS BLACK DOLL 1121Y  
D: CROSSROAD DUSTY 430D  
CROSSROAD DEGREE 294A  
LPN STARDUST 694R

Here is another very good Connected son, one of three red and four black sons we have on offer for you this year, along with a couple of fancy heifers too. Crossroad Connected has over 600 progeny registered, and at seven years old, he is still sure-footed and extremely athletic. 202N is the natural calf out of our ten-year-old Dusty cow, who is a member of our donor group. She has had nine January-born calves and is due again for a January baby. She has placed three strong producing daughters in the herd and is also the dam of Crossroad Valid, who has the biggest sire group in the sale this year. Lot 6 is also one of her transplant sons and has a full sibling in the replacement pen. Crusher is a deep-bodied, dark red bull with a super hair coat that will be strutting his stuff on sale day. ~Hetero Polled~



15

CROSSROAD *Cinder* 216N

PG1503790

CRF 216N

FEB 2 2025

POLLED PB

CE  
6.6  
BW  
4.5  
WW  
78.1  
YW  
115.9  
MILK  
21.8  
MCE  
3.8  
MWWT  
60.9

BW  
95  
SEP01  
WW  
785  
205 ADJ  
765  
365 ADJ  
1375



A long-bodied, deep-ribbed bull with adequate muscle and a sound, athletic build. He is structurally correct and moves freely on a good set of feet and legs. This bull offers practical performance without extremes and is easy to manage. Backed by a consistent and reliable cow family, he brings predictability to a breeding program. His design and athleticism support longevity and durability under commercial conditions. A straightforward option built to work and stay productive in a commercial cattleman's herd. ~Homo Polled~

CROSSROAD RED STEINSON 9E  
S: CROSSROAD CONNECTED 12G  
PERKS BLACK DOLL 1121Y  
WHEATLAND NEXT UP 595C  
D: CROSSROAD GEMMA 167G  
CROSSROAD DIVA 425D

16

CROSSROAD *John Daly* 221N

PG1504624

CRF 221N

FEB 3 2025

POLLED PB

CE  
6.4  
BW  
3.5  
WW  
81.2  
YW  
122.6  
MILK  
28.5  
MCE  
4.1  
MWWT  
69.1

BW  
103  
SEP01  
WW  
831  
205 ADJ  
814  
365 ADJ  
1628



We have two Jose Cuervo sons in our red division this year, and a third is Lot 54 in the fullblood section. Jose Cuervo is an impressive full fleckvieh bull that was purchased for his tremendous capacity, extra length of body, and natural muscling. 221N's LFE Vegas dam is a transplant that was mothered by a very prolific producer with over twenty calves to her credit. This bull has a great genetic package boasting a very balanced set of EPD's and showing excellent growth for a February-born bull. With no lack of performance, this bull will pack on some extra pounds to the calves he sires. ~Hetero Polled~

ANCHOR D OZARK 81G  
S: SILVER LAKE JOSE CUERVO 137I  
SILVER LAKE KELSEY 68B  
LFE VEGAS 3145A  
D: CROSSROAD HALLYN 29H  
PWK MS RUBY 52Y7A



17

CROSSROAD *John Travolta* 152N

PG1503430

CRF 152N

JAN 18 2025

POLLED PB

CE  
9.9  
BW  
2.6  
WW  
76.5  
YW  
100.4  
MILK  
28.4  
MCE  
6.5  
MWWT  
66.7

BW  
86  
SEP01  
WW  
835  
205 ADJ  
797  
365 ADJ  
1570



ANCHOR D OZARK 81G  
S: SILVER LAKE JOSE CUERVO 137I  
SILVER LAKE KELSEY 68B

DEEG DIGGER 13E  
D: CROSSROAD KARNATION 103K  
WFL RED SAGE 506C

Here is another good red/full fleck combo Jose Cuervo son sporting John Travolta style with a great hair coat, blaze face, and solid structure. His transplant dam belongs to the Sage cow family, which is one of the most well-known in the industry. She has a great udder, and we are looking forward to her next mid-January-born calf. Moderate birth weight with some good gains posted will make the "J.T." on his progeny's ear tags the most sought-after calves at the local auction market next fall. ~Hetero Polled~

18

CROSSROAD *Talladega* 165N

PG1503509

CRF 165N

JAN 19 2025

POLLED PB

CE  
6.4  
BW  
2.9  
WW  
70.6  
YW  
100.2  
MILK  
26.2  
MCE  
2.6  
MWWT  
61.5

BW  
92  
SEP01  
WW  
901  
205 ADJ  
830  
365 ADJ  
1560



LFE STRATTON 3094F  
S: CROSSROAD VALID 10L  
CROSSROAD DUSTY 430D

SIBELLE SPARTACUS 8A  
D: CROSSROAD GEANNA 92G  
IPU MS. CODE RED 249A

The sire of this unique bull sold at our 2024 sale, and because of his outstanding quality and trusted, top-notch genetics, we knew we needed to utilize him in our herd. The Valid sons are our biggest sire group this year, and we are also offering two daughters, lots 94 and 95. We also have a dozen or more kept in our replacement pen to move our program forward. 165N's Spartacus/Code Red dam has been an excellent producer, leaving us a good daughter in the herd and other progeny sold to Hoffus Stock Farm and JMR Farms. Here is a long-bodied, solid-colored bull with excellent muscle expression throughout. This combination of genetics is guaranteed to add performance to his sons and fertility to his daughters in your replacement pen. ~Homo Polled~



19

CROSSROAD *Trip* 56N

PG1498587

CRF 56N

JAN 6 2025

POLLED PB

CE  
6.8  
BW  
4.8  
WW  
80.4  
YW  
111.7  
MILK  
27.2  
MCE  
3.9  
MWWT  
67.4

BW  
99  
SEP01  
WW  
889  
205 ADJ  
791  
365 ADJ  
1428



S: LFE STRATTON 3094F  
CROSSROAD VALID 10L  
CROSSROAD DUSTY 430D  
D: PERKS KILL SWITCH 935F  
KKH ZALICIOUS 414J  
KKH ZALICIOUS 132E

Here is another stunning Valid son. Easy to spot in the pen with his great colour and hair on a super long body that also carries a ton of strong maternal values and good fertility. We purchased his big-bodied dam from Tri K Cattle at Beaverlodge, Alberta, knowing she would be a producer. We have a daughter working in the herd, and we are hoping that both mother and daughter's January calves will be females so we can expand this cow family ASAP. Valid with his stout stature was the perfect sire to use on this powerful female, and we are confident that his combination of genetics will produce some of your best. ~Homo Polled~

20

CROSSROAD *Tallahassee* 37N

PG1498557

CRF 37N

JAN 3 2025

POLLED PB

CE  
8.2  
BW  
2.0  
WW  
74.0  
YW  
102.2  
MILK  
27.6  
MCE  
3.5  
MWWT  
64.6

BW  
96  
SEP01  
WW  
930  
205 ADJ  
817  
365 ADJ  
1411



S: LFE STRATTON 3094F  
CROSSROAD VALID 10L  
CROSSROAD DUSTY 430D  
D: CMS FIREBALL 813F  
SPRINGCREEK JAYCEE 108J  
SPRINGCREEK JAYCEE 24D

This bull has been a freak of nature from the get-go. So proud and attractive fronted yet extremely expressive in his musculature and elegant on the move. Jaici was fortunate to purchase his Fireball dam from the Springcreek dispersal, and she consistently spits out calves so unique to the Simmental breed. She herself is clean made, with that same blaze face, and an udder you couldn't make better. She would be the granddam to Lot 33, and the phenotype of that bull alone speaks for itself. 37N is the one to grab your attention upon first glance in the pen. Dark coloured, big-ribbed, and extremely square-hipped. This cross truly couldn't have worked out any better; this guy's presence screams herd sire from all aspects. ~Homo Polled~



21

CROSSROAD *Toxin* 86N

PTG1503757

CRF 86N

JAN 9 2025

POLLED PB

LE STRATTON 3094F  
S: CROSSROAD VALID 10L  
CROSSROAD DUSTY 430D

SPRINGCREEK STOCK 10F  
D: SPRINGCREEK LADY 139H  
SPRINGCREEK LADY 10C

CE  
9.2  
BW  
1.4  
WW  
70.8  
YW  
88.8  
MILK  
23.5  
MCE  
3.8  
MWWT  
58.9

BW  
94ET  
SEP01  
WW  
844  
205 ADJ  
748  
365 ADJ  
1414



Donor: Springcreek Lady 139H

86N is the leadoff of this powerful trio of brothers out of Cooper's purchase at the Spring Creek dispersal. His dam, Springcreek Lady 139H, was truly an undervalued cow at the dispersal, but has proven herself as a cornerstone female in our program. Her first son, Western, was retained in our herd and has already produced two outstanding sons that sell as Lots 9 and 10. We flushed 139H to Valid; the result was 14 live calves. This spring, she was flushed again to the \$170,000 Cool Hand Luke bull, an exciting 11 embryos stuck, further cementing her legacy. With his exceptional pedigree, frame, and proven maternal backing, 86N is built to make a lasting impact on any breeding program. ~Homo Polled~

22

CROSSROAD *Tango* 74N

PTG1503756

CRF 74N

JAN 7 2025

POLLED PB

LE STRATTON 3094F  
S: CROSSROAD VALID 10L  
CROSSROAD DUSTY 430D

SPRINGCREEK STOCK 10F  
D: SPRINGCREEK LADY 139H  
SPRINGCREEK LADY 10C

CE  
8.9  
BW  
3.0  
WW  
79.9  
YW  
109.8  
MILK  
23.5  
MCE  
3.7  
MWWT  
63.5

BW  
95ET  
SEP01  
WW  
924  
205 ADJ  
813  
365 ADJ  
1563



74N complements 86N in terms of his quality and performance. He is big topped, long spined, and carries the same strong foot and structure, making him a bull built for longevity and soundness. His pedigree is stacked with two active donors, and he demonstrates the consistent power and performance that has become a hallmark for these genetics. ~Homo Polled ~



23

CROSSROAD *Tremor* 121N

PTG1503565

CRF 121N

JAN 13 2025

POLLED PB

CE  
5.5  
BW  
4.8  
WW  
77.3  
YW  
107.2  
MILK  
23.5  
MCE  
2.0  
MWWT  
62.2

BW  
103ET  
SEP01  
WW  
859  
205 ADJ  
773  
365 ADJ  
1506



LFE STRATTON 3094F  
S: CROSSROAD VALID 10L  
CROSSROAD DUSTY 430D  
D: SPRINGCREEK LADY 139H  
SPRINGCREEK LADY 10C

The final brother of the trio continues the trend of elite genetics and consistent quality. He is large-framed, smooth-made, and big-topped, with a correct, strong-footed structure. Like his brothers, 121N reflects the reliability and performance his dam consistently delivers, making him a bull with the kind of structure, power, and pedigree that producers can depend on. ~Homo Polled~

24

CROSSROAD *Taurus* 29N

PG1498551

CRF 29N

JAN 2 2025

POLLED PB

CE  
7.9  
BW  
4.4  
WW  
74.7  
YW  
114.2  
MILK  
22.0  
MCE  
3.5  
MWWT  
59.4

BW  
96  
SEP01  
WW  
897  
205 ADJ  
807  
365 ADJ  
1497



LFE STRATTON 3094F  
S: CROSSROAD VALID 10L  
CROSSROAD DUSTY 430D  
D: LFE RS GENE 3K  
LFE PS GENE 2209G

Shelby was fortunate enough to purchase the LFE RS GENE 3K cow out of Lewis Farms Leading Lady Sale in 2023. She's knocked it out of the park on this one. As a tanky, moderate female herself, she truly put her all into this calf. Big boned, square-hipped, extremely masculine, this dark red star-faced calf is one to take a peek at. Much like his father, there is no lack of frame and a foot so sound you couldn't make it better. This is a bull that's going to cover a pile of cows for a lot of years. ~Homo Polled~



25

CROSSROAD *Terminator* 196N

PG1503540

CRF 196N

JAN 26 2025

POLLED PB

CE  
6.7  
BW  
5.5  
WW  
86.4  
YW  
122.4  
MILK  
27.3  
MCE  
6.1  
MWWT  
70.5

BW  
97  
SEP01  
WW  
880  
205 ADJ  
866  
365 ADJ  
1535



Lots of substance in this good bull. His sire is super thick and the Cinderella man from Terminator's dam adds some extra frame. Our Cinderella Man daughters make great mothers and have udders that are built to last. Terminator is a long, deep-bodied bull with great hair and demeanor. He is solid coloured with a little white on his face as well. His excellent testicle size ensures he is ready to enter the workforce. Here is a bull full of performance that will be capable of covering a lot of cows; it's guaranteed you will be pleased with the results. ~Homo Polled~

LFE STRATTON 3094F  
S: CROSSROAD VALID 10L  
CROSSROAD DUSTY 430D  
CINDERELLA MAN  
D: CROSSROAD KENDALL 6K  
CROSSROAD GABRIELLA 50G

26

CROSSROAD *Trigger* 124N

SG1503400

CRF 124N

JAN 13 2025

POLLED/SCURS PB

CE  
7.0  
BW  
3.2  
WW  
73.2  
YW  
102.4  
MILK  
27.1  
MCE  
6.0  
MWWT  
63.7

BW  
98  
SEP01  
WW  
804  
205 ADJ  
758  
365 ADJ  
1462



124N is as complete as they come; big-barreled, strong-footed, thorough muscling, and great pigment with that chrome facial marking. His dam, a Cinderella Man second calver, comes from a long line of maternal strength. She's following in her mother's footsteps, proving her worth at a young age. Her first daughter was retained in the replacement pen and dropped an exciting first calf, the first week of January. Just like his sire, 124N is going to be a reliable breeding piece, siring a moderate set of dark-pigmented, soggy calves. ~Hetero Polled~

LFE STRATTON 3094F  
S: CROSSROAD VALID 10L  
CROSSROAD DUSTY 430D  
CINDERELLA MAN  
D: CROSSROAD KIND HEART 44K  
CROSSROAD EVERSWEET 142E



**27****CROSSROAD *Tyrant* 132N**

PG1503410

CRF 132N

JAN 14 2025

POLLED PB

CE  
11.4BW  
1.8WW  
66.4YW  
93.9MILK  
27.1MCE  
6.3MWWT  
60.3BW  
84SEP01  
WW  
864205 ADJ  
812365 ADJ  
1292LFE STRATTON 3094F  
S: CROSSROAD VALID 10L  
CROSSROAD DUSTY 430DLCDR AMERICAN RED 99F  
D: CROSSROAD KARON 178K  
CROSSROAD GANESHA 2G

Another neat, moderate framed, blaze face, Valid son that is very similar in kind to lot 26. His dam is a beautiful uddered American Red daughter with plenty of extension and that same dark cherry red hair coat. 132N exhibits a square structure from the ground up, a soggy build, good bone, and a super docile temperament. These Valid sons are exceptionally easy fleshing, and he stamps his calves with that attractive blaze face prominently.  
~Homo Polled~

**28****CROSSROAD *Throne* 237N**

PG1503808

CRF 237N

FEB 9 2025

POLLED PB

CE  
5.4BW  
3.5WW  
82.1YW  
121.3MILK  
28.4MCE  
3.9MWWT  
69.4BW  
99SEP01  
WW  
820205 ADJ  
823365 ADJ  
1477LFE STRATTON 3094F  
S: CROSSROAD VALID 10L  
CROSSROAD DUSTY 430DLCDR AMERICAN RED 99F  
D: CROSSROAD HILDE 186H  
CROSSROAD DELORAINE 125D

Here is a February-born natural son out of Valid and our donor cow, Crossroad Hilde whose impressive transplant sons are lots 1, 2, and 3. We also have several fancy daughters retained in the herd that will expand our options moving forward with this strong cow family. This young, stylish, blaze-faced bull is stacked with generations of some of our very best. Buy with confidence, you will be more than pleased with the results. ~Homo Polled~



29

CROSSROAD *Trek* 154N

PG1503432

CRF 154N

JAN 18 2025

POLLED PB

CE  
9.6BW  
2.6WW  
61.3YW  
82.9MILK  
31.0MCE  
3.6MWWT  
61.7BW  
86SEP01  
WW  
813  
205 ADJ  
746  
365 ADJ  
1292

LF STRATTON 3094F  
S: CROSSROAD VALID 10L  
CROSSROAD DUSTY 430D

SIBELLE SPARTACUS 8A  
D: CROSSROAD ELAINA 23F  
CROSSROAD WINSLETT 389W

Here is an interesting Valid son whose dam comes from an incredibly good uddered cow family. His fertile grandam gave us nine calves, and his Spartacus dam has brought home seven exceptional January-born calves. Unfortunately, she was sick all summer and did her best to nourish him through to fall. Three of her sons were high sellers at past sales, and we are so pleased to have one of her outstanding daughters working in the herd. Trek is deep bodied with promising development; he is very good footed and measured 38cm at just over 10 months of age. This bloodline has a lot to offer, and we are confident that you will appreciate the influence it will bring into your cow herd. ~Hetero Polled~

30

CROSSROAD *Texan* 211N

PG1503785

CRF 211N

FEB 1 2025

POLLED PB

CE  
7.1BW  
3.8WW  
72.3YW  
107.1MILK  
26.9MCE  
2.4MWWT  
63.1BW  
100SEP01  
WW  
801  
205 ADJ  
779  
365 ADJ  
1413

LF STRATTON 3094F  
S: CROSSROAD VALID 10L  
CROSSROAD DUSTY 430D

ERIXON REVELSTOCK 41A  
D: CROSSROAD FIREFLY 137F  
CROSSROAD ZEELA 146Z

One of the youngest Valid sons in the sale this year, but certainly carrying all the qualities exhibited by the rest of this solid group. Texan is a stylish, moderate-framed, thick bull with lots of testicle when the vet measured in early December. His Erixon Revelstock dam has a strong daughter working in the herd. She is a big, sound, deep-bodied cow with high values that will certainly add some extra punch to the calves Texan will sire. ~Hetero Polled~



31

CROSSROAD *Dale* 198N

PG1503542

CRF 198N

JAN 27 2025

POLLED PB

CE  
5.4  
BW  
3.6  
WW  
87.0  
YW  
119.0  
MILK  
20.7  
MCE  
2.4  
MWWT  
64.2

BW  
102  
SEP01  
WW  
812  
205 ADJ  
772  
365 ADJ  
1409



BEE ALPHA 915J  
S: RED TOP ALPHA 71L  
SKORS RED FORTUNE 176Y

SPRINGCREEK STOCK 10F  
D: SPRINGCREEK LADY 139H  
SPRINGCREEK LADY 10C

198N is the natural calf out of the Springcreek 139H cow, this time sired by Red Top Alpha. When Jody and Cooper went to see Alpha at Red Top, they were impressed by his dam, the Skors 176Y cow. They immediately recognized the exceptional genetics he carried. 198N is a moderate-framed, solid-footed bull with a correct structure and strong foundation. Backed by proven maternal power, he is the type of bull that will produce highly functional, consistent females for your herd. ~Homo Polled~

32

CROSSROAD *Atlas* 34N

PG1498554

CRF 34N

JAN 2 2025

POLLED PB

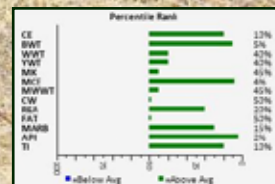
CE  
13.5  
BW  
-0.1  
WW  
81.3  
YW  
119.3  
MILK  
27.0  
MCE  
8.3  
MWWT  
67.7

BW  
77  
SEP01  
WW  
924  
205 ADJ  
862  
365 ADJ  
1481



BEE ALPHA 915J  
S: RED TOP ALPHA 71L  
SKORS RED FORTUNE 176Y

T33 MR FLASH 13F  
D: CROSSROAD LYNELLE 182L  
CROSSROAD J1LAYNE 31J



34N is an admirable calving ease prospect. This Alpha son off of a Flash daughter is doubled up on calving ease from two proven sires. This is our first calves off of the Red Top Alpha bull, and we are beyond pleased with this set on offer. These calves are unique in their own way, but all are extremely thick with great growth and appeal. His dam goes back to the American Red bull, and you can see his performance shine through on this calf. With a 77 lb BW and a 924 lb WWT, 34N is a true curve bender, as displayed in his EPD graph below. This is an extremely versatile individual with the ability to make use of him on heifers, second calvers, or cows. The expected calf crop is to be nothing short of remarkable. ~Homo Polled~



33

CROSSROAD *Slash* 17N

PG1498448

CRF 17N

JAN 1 2025

POLLED PB

CE  
12.3  
BW  
1.3  
WW  
85.7  
YW  
127.8  
MILK  
26.7  
MCE  
6.4  
MWWT  
69.6

BW  
78  
SEP01  
WW  
842  
205 ADJ  
790  
365 ADJ  
1460



BEE ALPHA 915J  
S: RED TOP ALPHA 71L  
SKORS RED FORTUNE 176Y

KWA SHAMROCK 151H  
D: CROSSROAD LUCKY IRISH 181L  
SPRINGCREEK JAYCEE 108J

To say that this bull has blown our socks off is an understatement. We should have expected nothing less from this bloodline. Generations of moderate, easy-keeping females with the neatest udders. On top of this, the ability to calve unassisted with modest birthweights and explosive growth. Take a look at his grandam's bull, Lot 20, who exemplifies why we love this pedigree. 17N was born at just 78lbs to his first calving KWA Shamrock momma. As a calf, we could tell he was going to develop into one of the top calving ease prospects. Smooth-shouldered and small-skulled, yet full of shape and dimension. This bull is exceptionally attractive, with bold capacity, dark red pigment, and a hair coat so thick and luscious. Buy with confidence on this one, as we had a difficult time not keeping him for ourselves. ~Homo Polled~

34

CROSSROAD *Apache* 2N

PG1498432

CRF 2N

JAN 1 2025

POLLED PB

CE  
11.2  
BW  
0.9  
WW  
78.0  
YW  
115.9  
MILK  
28.8  
MCE  
6.5  
MWWT  
67.8

BW  
85  
SEP01  
WW  
847  
205 ADJ  
797  
365 ADJ  
1487



BEE ALPHA 915J  
S: RED TOP ALPHA 71L  
SKORS RED FORTUNE 176Y

KWA SHAMROCK 151H  
D: CROSSROAD LEGEND 146L  
SPRINGCREEK POCAHONTAS 93J

Red Top Alpha sure did his job in the heifer pen. As you can see, this Alpha son has an 85 lb. birth weight, an 11-plus calving ease EPD, and has posted some pretty good weaning and yearling weights too. His young dam fed him well and bred back for the first of January. This is the second daughter his grandam has placed in the herd, and she also has a son in the sale. Be sure to check out lot 10. Apache is a red blaze with a great hair coat, long-bodied with ample thickness and solid structure. This combined pedigree has some really good maternal traits that will result in his daughters producing above-average calves. ~Homo Polled~



**35****CROSSROAD *Torre* 58N**

PG1498589

CRF 58N

JAN 6 2025

POLLED PB

CE  
10.2  
BW  
1.0  
WW  
76.5  
YW  
109.1  
MILK  
21.1  
MCE  
4.6  
MWWT  
59.4

BW  
74  
SEP01  
WW  
766  
205 ADJ  
738  
365 ADJ  
1496



Born small and vigorous at 74 lbs, this Gunner heifer did a good job mothering him and has bred back for mid-January. His grandam is a full sister to Connected and has two daughters in the herd. 58N is moderate framed with good depth that carries through to his well-muscled rear quarter and has really good testicle size too. He is sure to have many admirers on sale day with his super dark hair coat. His proven genetic package guarantees you will more than admire the calves he produces, too. ~Homo Polled~

BEE ALPHA 915J  
S: RED TOP ALPHA 71L  
SKORS RED FORTUNE 176Y  
TNT GUNNER N208  
D: CROSSROAD LOCHLYN 200L  
CROSSROAD JOCELYN 98J

**36****CROSSROAD *Lexion* 145N**

PG1503423

CRF 145N

JAN 17 2025

POLLED PB

CE  
8.1  
BW  
4.6  
WW  
85.5  
YW  
123.2  
MILK  
27.0  
MCE  
2.7  
MWWT  
69.8

BW  
95  
SEP01  
WW  
849  
205 ADJ  
844  
365 ADJ  
1503



This is the only son this year from the impressive Springcreek Sherlock, who has been one of our trusted herd sires in the heifer pen. Also, be sure to check the fancy Sherlock daughters, lots 97 & 98 in the heifer section. Lexion's powerful transplant Sysco dam is a full sister to lot 38's dam and has done an excellent job raising her first calf. Certainly enough growth and muscle on a sound structure, along with solid colour, good hair coat, and large testicles, all tremendous qualities you can expect to see when you assess 145N on sale day. ~Homo Polled~

KWA SHAMROCK 151H  
S: SPRINGCREEK SHERLOCK 140K  
SPRINGCREEK AMANDA 35F  
MRL SYSCO 14D  
D: CROSSROAD LOTUS 100L  
CROSSROAD GRACE 17G



37

CROSSROAD *Whiplash* 63N

PG1499385

CRF 63N

JAN 6 2025

POLLED PB

CE  
6.7  
BW  
2.5  
WW  
72.8  
YW  
102.7  
MILK  
24.5  
MCE  
5.4  
MWWT  
60.9

BW  
86  
SEP01  
WW  
845  
205 ADJ  
808  
365 ADJ  
1531



A punchy made WFL Winchester calf that has been exceptional to watch mature throughout the year. He took after his dam with his robust make and big bone packed into a moderate frame, not to mention a commendable hair coat. Backing this bull is a maternal pedigree so easy doing, it is shocking how little encouragement they need to fill out and weigh up. His fertile Grandam is due with her 7th January calf, her Valid heifer calf sells as Lot 95- be sure to check her out! The Winchester bull was purchased for his extreme calving ease from Westway Farms in 2024. This is a bull that would be a great option to cover second calvers. We strongly feel he is going to sire a neat set of calves. ~Homo Polled~

MRL CENTRUM 27J  
S: WFL WINCHESTER 90L  
WFL RED ELECTRA 1049J

WHEATLAND NEXT CENTURY 43H  
D: CROSSROAD LUCY 12L  
CROSSROAD FREDA 36F

38

CROSSROAD *Wrigg* 27N

PG1498547

CRF 27N

JAN 2 2025

POLLED PB

CE  
5.7  
BW  
4.1  
WW  
83.1  
YW  
126.3  
MILK  
23.2  
MCE  
1.5  
MWWT  
64.8

BW  
84  
SEP01  
WW  
768  
205 ADJ  
732  
365 ADJ  
1412



Another good bull sired by Winchester, with his calving ease genetics, we were comfortable using him on some power heifers. 27N's Sysco transplant dam would be in the power category, and she is bred back for another January calf. We are confident she will have a long and productive future ahead. 27N has posted excellent weaning and yearling weights from his 84-pound start. He has a well-balanced set of EPD's all in a solid dark red package with adequate thickness and testicle development. With the power from his dam we would suggest using 27N on second calvers. Here is a really good choice to consider for your next herd sire. ~Homo Polled~

MRL CENTRUM 27J  
S: WFL WINCHESTER 90L  
WFL RED ELECTRA 1049J

MRL SYSCO 14D  
D: CROSSROAD LILLY 40L  
CROSSROAD GRACE 17G



## Customer Testimonial

### MOORE RANCH LTD. - 52 Bulls

Owned by Rick and Darrel Moore

We run a commercial Simmental/Angus herd. We begin our calving season at the beginning of April. We sell our steer calves in November. We retain all the heifer calves through the winter: in May, we have our replacements sorted off & sell the remainder of the heifers. Over the years, we have had repeat buyers for the calves, so it makes you think you are doing something right with the breeding program!

We have a long-standing relationship with Crossroad Farms. We bought our first Crossroad Farms bull in 2006 and have been buying bulls from them ever since. Crossroad Farms breeding program has made a substantial difference in our cow/calf operation! Crossroad Farms high-quality bulls are a result of years of dedication, hard work, and determination. Always stand 100% behind their bulls. Best people and cooks you'll ever meet!

Congratulations Crossroad Farms on your 20th Anniversary Sale!

Thanks for all the great bulls over the years!



## The Crossroad Employees of the Year

**We all know that your business is only as good as the people that work for you. We have been blessed with tremendous help here at Crossroads. Our employees are much more than that – they are friends that are family.**

**Kirk Gerich** – Kirk joined our crew in the fall of 2020 when Jody was going through cancer treatments. He took on a leadership role immediately and got us through that year. Fortunately for us, he has stayed with us for the last 5 years. He knows our cows well and takes immense pride in helping maintain the herd. He has great work ethic, pride in his job and brings the fun to Crossroad Farms each and every day.



**Claude Turgeon** - Claude also joined our crew at a time when we needed an extra hand due to a family health issue. He was retired at the time and came to help get us through the fall, and somehow we have been able to keep him around for 6 years. He is a jack of all trades - mechanic, truck driver, grain hauler, and my favourite – master of getting rid of junk. He and his family have become a very special part of our lives. When the time comes that he decides to retire for real – we will sure miss him but will also be very happy for him.

**Tanner Abraham** – Tanner came to give us a hand for 2 months in the fall of 2025. He had come to help us the odd weekend over the winters during his time at University and we knew he was a good worker, but what he did for us last fall was unbelievable. He reminds me a lot of Jody – a work ethic beyond the average human being. He came to help do the fall cattle work and ended up in a combine and didn't even complain. He knows our bulls extremely well. He put a lot of time in the bull pens this fall and it shows in the demeanor of our sale offering. Jody always jokes that Tanner was "testing the waters" as he just happens to be Shelby's other half.





39

CROSSROAD *Tulsa Time* 87N

PT1503744

CRF 87N

JAN 9 2025

POLLED FF

CE  
-0.1  
BW  
7.1  
WW  
74.3  
YW  
97.9  
MILK  
32.5  
MCE  
0.2  
MWWT  
69.7

BW  
99ET  
SEP01  
WW  
977  
205 ADJ  
872  
365 ADJ  
1499



Donor: Anchor D Adley 175C

SIBELLE POL DARWIN 21F  
S: SILVER LAKE JENNER 9J  
MCM MISS FARRAH FF 10F  
DOUBLE BAR D INTUITION  
D: ANCHOR D ADLEY 175C  
HEMR SONVA 25S

Tulsa Time has been THE ONE since day one. Genetically superior in every way; heterozygous polled, exceptional pigment, eye-catching markings, a deep-bodied design, and an early maturing, power-packed look that sets him apart in any pen. He continues to impress us more with every passing day. He and his full brother are the result of 3 embryos purchased from Silver Lake in 2024. Sired by Silver Lake Jenner, a bull who has made waves in the breed, selling for \$55,000 as a yearling and again for \$51,000 as a coming five-year-old. We were fortunate to secure the semen rights on him in early 2024, as we truly believe he is one of the most underused and undervalued sires available today. Tulsa Time's dam, Anchor D Adley, has long proven herself as a highly dependable and productive donor cow. Consistently contributing elite quality calves to the Silver Lake program. Tulsa Time embodies the best of both sides of his pedigree. He carries a bold, masculine skull, dark cherry-red hair, thorough muscling, and a docile temperament that makes him a pleasure to handle. Even more impressive, at just 11 months old, he has already frozen semen, showcasing early reproductive strength and long-term breeding value. With his stacked pedigree, striking phenotype, and overall performance, Tulsa Time is shaping up to be a sale feature this February. This is a bull we believe will leave a lasting impact on the Simmental breed for years to come. ~Hetero Polled ~ Diluter Free~

40

CROSSROAD *Everclear* 110N

T1503745

CRF 110N

JAN 11 2025

HORNED FF

CE  
1.5  
BW  
6.6  
WW  
69.8  
YW  
92.4  
MILK  
32.5  
MCE  
1.3  
MWWT  
67.4

BW  
98ET  
SEP01  
WW  
919  
205 ADJ  
825  
365 ADJ  
1523



SIBELLE POL DARWIN 21F  
S: SILVER LAKE JENNER 9J  
MCM MISS FARRAH FF 10F  
DOUBLE BAR D INTUITION  
D: ANCHOR D ADLEY 175C  
HEMR SONVA 25S

These two Jenner sons sure make us wish we had another pen full of them. Extremely dark pigmented, double-goggled, good-haired, deep-bodied, and stocky muscled. 110N is exceptionally athletic on the move, with a large, outstanding foot beneath him. The Jenner bull is one we will continue to use moving forward, after firsthand experiencing the immense quality he passes on. The pigment on these two sons might be the most incredible thing to watch as they've matured, it's almost developed as black, it's so dark. Take your pick of these two standouts, we can concur that both are going to excel in the beef industry. ~Diluter Free~



41

CROSSROAD *Yesavage* 174N

PT1522918

CRF 174N

JAN 22 2025

POLLED FF

CE  
4.4  
BW  
4.6  
WW  
72.9  
YW  
95.0  
MILK  
35.4  
MCE  
3.3  
MWWT  
71.9

BW  
90ET  
SEP01  
WW  
842  
205 ADJ  
796  
365 ADJ  
1479



Donor: Mavv Jacey 151J

174N was purchased as an embryo out of the Canadian Donors Production Sale. He is sired by the \$170,000 SBV Modano bull, a rapidly rising name in the industry and a sire already being used by some of the top breeders across Canada. His dam, MAVV Jacey, is a young donor cow we hold in very high regard. 174N is a complete, moderate-framed bull with extreme muscle expression in his hind quarter. As our latest born embryo calf, he has shown tremendous growth and has blown us away this past month. He's the kind of bull that will produce long-lasting, productive females, and the confirmed polled test makes him even more appealing. ~Hetero Polled~  
~ Diluter Free~

SILVER LAKE JACKSON 24J  
S: SBV MODANO 518L  
SBV EMMA 413G

ANCHOR D RUBICON 525E  
D: MAVV JACEY 151J  
MI MISS CARLY 5G

42

CROSSROAD *Summit* 82N

T1503740

CRF 82N

JAN 8 2025

HORNED FF

CE  
0.3  
BW  
6.2  
WW  
86.7  
YW  
123.5  
MILK  
31.4  
MCE  
0.8  
MWWT  
74.8

BW  
94ET  
SEP01  
WW  
904  
205 ADJ  
809  
365 ADJ  
1529



We have raised, sold, and seen some very good Harrach sons and daughters over the years and are pleased to offer you a son from our Priscilla donor cow. She is a force, raising a top-end bull for Cypress colony in 2024 and placing a couple of super daughters in the replacement pen. She also has two other sons, lots 56 & 57, for you to check out. 82N is a Full Fleck double-goggled, big-bodied bull that carries good muscling throughout. He had great scrotal development when we measured in early December. Here's one that will definitely get some attention on sale day. ~ Diluter Free~

BAR 5 SA OPTIMAL 447L  
S: BAR 5 SA HARRACH 801P  
BAR 5 SA LADY SISKIA 409M

BL KALIBRE 762E  
D: BEE PRISCILLA 122J  
BEE PRISCILLA 571C



43

CROSSROAD *Baron* 41N

T1503571

CRF 41N

JAN 3 2025

HORNED FF

CE  
5.5  
BW  
4.6  
WW  
76.3  
YW  
104.2  
MILK  
38.8  
MCE  
3.1  
MWWT  
76.9

BW  
102ET  
SEP01  
WW  
1003  
205 ADJ  
880  
365 ADJ  
1650



Donor: Ultra Ms Whisper 1J

The sire of this good bull is Crossroad Lieutenant, who was purchased by Siroski Simmentals in 2022. Both farms have produced several top-end sons and daughters; in fact, he is one of the most consistent sires we have ever used. We have two Lieutenant son's for you this year. This one and lot 44 are transplant brothers, and they both have a pile to offer. We also have a full sibling in the replacement heifer pen that has been a family favourite since birth. Their dam, Ultra Ms Whisper 1J, pictured above, is one of our top donor cows. All of her progeny have been outstanding, exemplifying her ability to produce. This full fleckvieh son has an elevated presence with his massive rear quarter and thickness throughout. He is a must-see; you could drive a lot of miles to find a bull of this caliber. ~ Diluter Free~

SBV REPUTATION 707F  
S: CROSSROAD LIEUTENANT 142J  
SBV PIXIE 793A  
NAC BATTLE CRY 4F  
D: ULTRA MS WHISPER 1J  
BLACK GOLD MS WHISPER 36G

44

CROSSROAD *Bruiser* 80N

ST1503568

CRF 80N

JAN 8 2025

POLLED/SCURS FF

CE  
4.5  
BW  
6.2  
WW  
88.4  
YW  
127.0  
MILK  
38.8  
MCE  
2.6  
MWWT  
83.0

BW  
104ET  
SEP01  
WW  
1076  
205 ADJ  
960  
365 ADJ  
1670



Another great Lieutenant son and transplant brother to lot 43. You can surely see the consistency these brothers have. Their dam plays a huge part in their quality too. She has fifteen calves to her credit, all January born, with five daughters remaining in the herd, four sons in this year's sale, and six high sellers that sold at previous sales. We are also expecting calves from two of those sons that we had retained in herd semen, and she is due again in early January to Crossroad Yahoo, who was one of our high sellers at last year's sale purchased by Double Bar D. Quite a record for a cow whose fifth birthday is Jan 1, 2026. She is very striking in appearance and has an incredible udder. 80N is a double-goggled, big-barrelled, long-spined, massive muscled, heavy-weight bull. Not easy to find ones like this that will make such a huge difference in the calves you produce. If you are a serious cattle person, wanting more than average, we invite you to come check this one out. ~Hetero Polled ~ Diluter Free~

SBV REPUTATION 707F  
S: CROSSROAD LIEUTENANT 142J  
SBV PIXIE 793A  
NAC BATTLE CRY 4F  
D: ULTRA MS WHISPER 1J  
BLACK GOLD MS WHISPER 36G



45

CROSSROAD *Yeti* 45N

T1503737

CRF 45N

JAN 3 2025

HORNED FF

CE  
8.6  
BW  
3.9  
WW  
74.7  
YW  
99.0  
MILK  
34.5  
MCE  
5.0  
MWWT  
71.9

BW  
100ET  
SEP01  
WW  
922  
205 ADJ  
811  
365 ADJ  
1395



Yeti is a bull we have admired since spring. As a calf, we knew he was something special, making him the bull calf we selected early to represent us at the National Young Canadian Simmental Association show in Weyburn this past summer. He is sired by the proven 14P Evan bull, which we have confidently used for many years. His progeny has only continued to improve year after year. His dam, Ultra Ms Whisper 1J, has quickly become a household name in our donor pen after producing our feature bulls for the past three consecutive years. Yeti carries a pile of capacity; he's massive topped and huge boned. He's known as the pet of the pen, always the first one looking for a scratch. This is a bull backed by big-time performance and an outstanding genetic package from top to bottom. ~Diluter ~

BAR 5 SA EVAN 440L  
S: MF MR. EVAN 14P  
BHR LADY SUZETTE 207K

NAC BATTLE CRY 4F  
D: ULTRA MS WHISPER 1J  
BLACK GOLD MS WHISPER 36G

46

CROSSROAD *Yarborough* 42N

T1503735

CRF 42N

JAN 3 2025

HORNED FF

CE  
9.9  
BW  
4.9  
WW  
74.9  
YW  
105.6  
MILK  
34.5  
MCE  
5.3  
MWWT  
72.0

BW  
91ET  
SEP01  
WW  
883  
205 ADJ  
777  
365 ADJ  
1398



42N is a full sibling to lot 45 and closely resembles his brother in his overall make, only differing in his pigment markings. He is wide topped and big middled, carries a long, correct spine, and measured with great scrotal in December. Yarborough weaned off at an actual weaning weight of 883 pounds, showing his early growth and performance. Supported by awesome genetic backing from a proven mating, he offers the combination of power, structure, and consistency that we all look for in a herd sire. ~Diluter Free~

BAR 5 SA EVAN 440L  
S: MF MR. EVAN 14P  
BHR LADY SUZETTE 207K

NAC BATTLE CRY 4F  
D: ULTRA MS WHISPER 1J  
BLACK GOLD MS WHISPER 36G



47

CROSSROAD *Karnage* 144N

1503421

CRF 144N

JAN 17 2025

HORNED FB

RUK FORT WORTH 77F  
S: KHG KEON 27K  
CROSSROAD BOSSIE 804B

RWR STEIGER 2D  
D: CROSSROAD GLIMMER 46G  
CROSSROAD EXPRESSIONS 119E



When we saw this bull's sire pictured in the Westgold catalogue, we couldn't quit talking about him. We knew the bloodline well and were sure happy to get him home and working. He adds a ton of thickness to all the calves he sires. This 144N is a twin, and look at the incredible weights he has posted. His dam and her entire maternal side were all known for their impeccable udder quality. Here is a stylish, dark red, double-goggled bull that is structured well and also had a huge scrotal measure in early December. We are confident you are going to be impressed with this guy on sale day. ~Diluter Free~

CE  
5.2BW  
3.7WW  
81.1YW  
118.1MILK  
35.3MCE  
1.9MWWT  
75.9BW  
88

SEP01  
WW  
892  
205 ADJ  
832  
365 ADJ  
1576

48

CROSSROAD *Kachow* 146N

1503422

CRF 146N

JAN 17 2025

HORNED FB

RUK FORT WORTH 77F  
S: KHG KEON 27K  
CROSSROAD BOSSIE 804B

RWR STEIGER 2D  
D: CROSSROAD GLIMMER 46G  
CROSSROAD EXPRESSIONS 119E



It's not that often that both twins get scored high enough to get past Jody's "cull sorting stick". But this year we have a few. Here is the twin to lot 47, a little less at birth, and then got shuffled onto a first calver that took her time deciding if she liked him or not. So, a little slow start, but has been making up ground since then. His Keon sire's thickness is starting to show, and so is his dam's great colour, along with all the quality maternal traits that I mentioned in the previous lot. This fellow will check a lot of the boxes most good cattlemen require when scoring their future herd sires on sale day. ~Diluter Free~

CE  
5.4BW  
6.0WW  
85.6YW  
122.1MILK  
35.3MCE  
2.7MWWT  
78.1BW  
81

SEP01  
WW  
814  
205 ADJ  
761  
365 ADJ  
1379



49

CROSSROAD *Knox* 212N

1503786

CRF 212N

FEB 1 2025

HORNED FB

CE  
0.7  
BW  
7.7  
WW  
89.0  
YW  
128.5  
MILK  
32.8  
MCE  
1.8  
MWWT  
77.3

BW  
104  
SEP01  
WW  
924  
205 ADJ  
897  
365 ADJ  
1507



RUK FORT WORTH 77F  
S: KHG KEON 27K  
CROSSROAD BOSSIE 804B

BAR KR ON POINT 25D  
D: CROSSROAD GWENDOLYN 113G  
CROSSROAD X-10LA 281X

Here is our third Keon son on offer for you this year. And again, we see typical Keon early maturing weights, even on this February-born son. If you are in the steer market, you definitely want some of these money-making genetics! Here is Knox 212N, naturally thick, big-bodied, good-haired, with wrap-around goggles and excellent testicle size too. He is very good for his age. His dam is a big cow with good uddered maternal lines that follow some of our very best producers from the past. Here's a bull that will sire the heavyweights. ~Diluter Free~

50

CROSSROAD *Marlowe* 197N

1503541

CRF 197N

JAN 27 2025

HORNED FF

CE  
4.4  
BW  
5.0  
WW  
67.7  
YW  
98.9  
MILK  
35.0  
MCE  
-1.8  
MWWT  
68.9

BW  
104  
SEP01  
WW  
798  
205 ADJ  
772  
365 ADJ  
1385



VIRGINIA MARQUEE 423D  
S: VIRGINIA MILLER 41K  
SIBELLE ROSEL 41C

SBV REPUTATION 707F  
D: CROSSROAD JORDAN 86I  
SBV PIXIE 793A

We have three Virginia Miller sons on offer this year. Miller has a very good full fleck pedigree, making this 197N bull also a very interesting bloodline. He is striking with dark pigment, goggles, and a great hair coat. He is structured well with adequate muscling and big testicles for a late January-born bull. He has a very good transplant mother, with a near-perfect udder. She is a member of our strong Pixie cow family that has been nothing short of astounding for our herd. She had a rough past couple of years here, but bred back to have this January calf and is bred again for mid-January. Come check out 197N or any other bulls before the sale. We sure enjoy your visits. ~Diluter Free~



51

CROSSROAD *Mortal* 149N

1503427

CRF 149N

JAN 17 2025

HORNED FB

VIRGINIA MARQUEE 423D  
S: VIRGINIA MILLER 41K  
SIBELLE ROSEL 41C

RWR STEIGER 2D  
D: CROSSROAD FRENCHIE 34F  
CROSSROAD D'AMOUR 61D



Here is another good Miller son, born as an 88 pound twin to a super productive female. She has three daughters working in the herd, and all seven of her calves have been born in January. Her ten-year-old dam is due in January, too, and she also has daughters working in the herd, so some excellent fertility and a great cow family to buy into. 149N will mature into an impressive herd sire, stylish, great colour, thickness, and structured well too. ~Diluter Free~

CE  
5.7  
BW  
7.1  
WW  
80.2  
YW  
114.7  
MILK  
35.5  
MCE  
2.7  
MWWT  
75.6

BW  
88  
SEP01  
WW  
854  
205 ADJ  
797  
365 ADJ  
1408

52

CROSSROAD *Mayhem* 150N

1503428

CRF 150N

JAN 17 2025

HORNED FB

VIRGINIA MARQUEE 423D  
S: VIRGINIA MILLER 41K  
SIBELLE ROSEL 41C

RWR STEIGER 2D  
D: CROSSROAD FRENCHIE 34F  
CROSSROAD D'AMOUR 61D



This guy was fed by a first calver, and she brought him a long way from his 77-pound birth weight. He carries the same great color as his dam that also raised a son who was a high seller at our 2022 sale to Langer Land & Cattle. 150N has plenty of thickness and huge testicles when we measured in December. With proven maternal values in his pedigree, this well-rounded individual is sure to make his mark on the calves he sires. ~Diluter Free~

CE  
8.4  
BW  
2.9  
WW  
66.8  
YW  
92.9  
MILK  
35.5  
MCE  
2.7  
MWWT  
68.9

BW  
77  
SEP01  
WW  
816  
205 ADJ  
763  
365 ADJ  
1318



**53****CROSSROAD** *Monarch 141N*

1503417

CRF 141N

JAN 15 2025

HORNED FB

CE  
5.2  
BW  
5.0  
WW  
76.8  
YW  
115.8  
MILK  
34.2  
MCE  
5.6  
MWWT  
72.6

BW  
91  
SEP01  
WW  
869  
205 ADJ  
821  
365 ADJ  
1581



ANTONIUS  
S: GUIDSCO APOLLO 3F  
MFL BRENDA 65B

BRSE FB POL BATMAN 45H  
D: CROSSROAD KALEXIS 104K  
CROSSROAD HUSSY 141H

Here is a bull we admired every time on our weekly summer pasture checks for his natural thickness and overall presence. He does have identifying white on his shoulder and legs, but that certainly will not affect the quality calves he sires. We were hoping for a daughter from this mating, knowing what good mothers the Apollo females make. 141N also comes from a fertile, great uddered cow family with both dam and grandam due in early January. Along with above average maternal strengths, this bull is muscled well, has big testicles, and is sound to the ground, full of excellent traits. ~Diluter Free~

**54****CROSSROAD** *John Dutton 181N*

1503524

CRF 181N

JAN 23 2025

HORNED FB

CE  
7.1  
BW  
3.3  
WW  
76.5  
YW  
105.4  
MILK  
39.7  
MCE  
5.9  
MWWT  
78.0

BW  
95  
SEP01  
WW  
825  
205 ADJ  
783  
365 ADJ  
1417



ANCHOR D OZARK 81G  
S: SILVER LAKE JOSE CUERVO 137I  
SILVER LAKE KELSEY 68B

SBV REPUTATION 707F  
D: CROSSROAD JAYON 271I  
CROSSROAD DAMOUR 61D

Along with this good bull, we have two other Jose Cuervo sons in our red division, lots 16 & 17. Jose Cuervo is an impressive full fleckvieh bull and was purchased for his tremendous capacity, maximal length of body, and natural muscling. 181N's Reputation dam has a very nice udder and is due again in January. Her last year's good bull was purchased by Scott Bretz & Chris Lozochuk. His maternal grandam is also due in January and has three good daughters producing in the herd, so strong maternal values in this bloodline. 181N will be impressive by sale day, with plenty of performance, style, and stature for you to assess. ~Diluter Free~



55

CROSSROAD *Ridge* 135N

PT1503774

CRF 135N

JAN 14 2025

POLLED FF

ROGANT  
S: PRL HOUSTON 005H  
MS PRL NITE-ANCHOR 109B

CHAMPS BRAVO  
D: ALLIANCE MS DAKOTA DREAM  
ALLIANCE SPECIAL'S DAKOTA



Here is a stylish ET bull with good colour and plenty of thickness in that rear quarter. He is a result of a package of embryos we purchased with the hope there would be a female, and she is in the replacement keeper pen. His sire, PRL Houston, is known for his excellent uddered females that have the ability to feed a calf well. 135N's pedigree is stacked with proven cow families, so if you are planning on keeping some replacements, this is certainly one to consider. ~Hetero Polled ~Diluter Free~

CE

3.0

BW

6.9

WW

80.9

YW

113.1

MILK

31.7

MCE

3.2

MWWT

72.2

BW

103ET

SEP01

WW

862

205 ADJ

780

365 ADJ

1460

56

CROSSROAD *Havoc* 39N

1498563

CRF 39N

JAN 3 2025

HORNED FF

STARWEST POL BATMAN  
S: BRSE FB POL BATMAN 45H  
DOUBLE BAR D FEATHER 49F

BL KALIBRE 762E  
D: BEE PRISCILLA 122J  
BEE PRISCILLA 571C



Here is a son of our big-framed donor cow, Priscilla. His sire, Batman was an easy choice to get the job done when one of our new yearlings couldn't reach, and we got blessed with twins. Batman is usually exclusively used in the heifer pen, providing calving ease and performance along with desirable pigment, and the daughters we have retained have excellent udders. Both sons and daughters have been in high demand, with several being purchased by fellow breeders. Priscilla fed this twin, and you can see the power of good milk by this 900-pound weaning weight. Double goggled, enough thickness throughout, moderate in size, interesting full fleck pedigree, come check these guys out. ~Diluter Free~

CE

6.7

BW

4.5

WW

72.9

YW

102.4

MILK

28.8

MCE

3.7

MWWT

65.3

BW

90

SEP01

WW

900

205 ADJ

808

365 ADJ

1390



57

CROSSROAD *Joker* 40N

1498566

CRF 40N

JAN 3 2025

HORNED FF

CE  
8.0  
BW  
2.0  
WW  
68.4  
YW  
92.6  
MILK  
28.8  
MCE  
1.7  
MWWT  
63.0

BW  
84  
SEP01  
WW  
792  
205 ADJ  
716  
365 ADJ  
1310



STARWEST POL BATMAN  
S: BRST FB POL BATMAN 45H  
DOUBLE BAR D FEATHER 49F

BL KALIBRE 762E  
D: BEE PRISCILLA 122J  
BEE PRISCILLA 571C

Here is the full brother to the previous lot. Smaller at birth and fed by a heifer that did a really good job getting him to almost 800 pounds at weaning. His donor dam placed two nice daughters in the replacement pen this year, and also has a transplant son in the sale. Be sure to check out lot 42. Joker has similar qualities to his twin and will easily find his place in a herd bull battery that needs servicing for all types of cows. ~Diluter Free~

58

CROSSROAD *Bane* 222N

P1504625

CRF 222N

FEB 3 2025

POLLED FF

CE  
10.0  
BW  
2.0  
WW  
73.5  
YW  
111.2  
MILK  
31.3  
MCE  
4.6  
MWWT  
68.1

BW  
82  
SEP01  
WW  
738  
205 ADJ  
790  
365 ADJ  
1440



STARWEST POL BATMAN  
S: BRST FB POL BATMAN 45H  
DOUBLE BAR D FEATHER 49F

CROSSROAD LIEUTENANT 142J  
D: CROSSROAD LEAN-ON-ME 113L  
CROSSROAD HUG-A-ME 69H

A February-born Batman son that will not only be admired for his dark red hair coat, but his super stylish presentation too. Born unassisted with his dam and grandam both due in January. His grandam raised an exceptional Apollo son that sold at last year's sale to Kevin Bristow, and two of her daughters are retained in the herd. 222N's polled full-fleck pedigree is very maternal with several strong cow families backing this young herd sire. We are very confident he will mature into one that will sire some of your very best. ~Hetero Polled ~Diluter Free~



**59****CROSSROAD *Gotham* 204N**

1503779

CRF 204N

JAN 30 2025

HORNED FB

CE  
6.9  
BW  
2.6  
WW  
68.5  
YW  
95.8  
MILK  
32.3  
MCE  
2.7  
MWWT  
66.6

BW  
87  
SEP01  
WW  
805  
205 ADJ  
844  
365 ADJ  
1348



S: STARWEST POL BATMAN  
BRF FB POL BATMAN 45H  
DOUBLE BAR D FEATHER 49F  
D: CROSSROAD LIEUTENANT 142J  
CROSSROAD LIPSTICK 96L  
CROSSROAD FARENHEIT 94F

This fella's mom was found four feet up in the pasture in early August, it did knock him back a bit, but still made the 800lbs by weaning. She was an extremely honest producing, big-framed female with a pile of potential yet. His good uddered granddam is due with her 7th consecutive calf, and we sure hope we can get another heifer. 204N measured 38cm at 10 months of age. He is star faced, has good body length, muscled well, and is solid on all four. With good fertility and excellent udder quality on both sides of his pedigree, his strong maternal bloodlines will really show up in the replacement heifers he sires. ~Diluter Free~

**60****CROSSROAD *Luthor* 89N**

P1503382

CRF 89N

JAN 9 2025

POLLED/SCURS FF

CE  
10.7  
BW  
3.2  
WW  
77.3  
YW  
105.7  
MILK  
38.0  
MCE  
6.1  
MWWT  
76.7

BW  
94  
SEP01  
WW  
867  
205 ADJ  
801  
365 ADJ  
1310



S: FAIRVIEW EVOLUTION 318H  
KEET'S LAUNCH 28L  
KEET'S FATIMA 20F  
D: CROSSROAD RADIUM 789U  
CROSSROAD KISS-A-ME 23K  
CROSSROAD HUG-A-ME 69H

This is an excellent polled full-fleck white-faced, Launch sired son. Deep-sided and well-muscled in all the right places. He has good testicle size and has that real herd bull presence look to him. He is mothered by a great uddered Radium dam whose half-sister is the dam of the lot 58 bull. This is an extremely strong cow family, and you can be sure we will retain all of their daughters, knowing what they are capable of raising. 89N's sons will be strong, and the replacement females he sires will be tremendous producers. ~Hetero Polled ~Diluter Free~



61

CROSSROAD *Lampoon* 72N

P1503378

CRF 72N

JAN 7 2025

POLLED FB

CE  
10.8  
BW  
2.8  
WW  
64.4  
YW  
87.2  
MILK  
32.8  
MCE  
6.2  
MWWT  
65.0

BW  
79  
SEP01  
WW  
779  
205 ADJ  
752  
365 ADJ  
1394



Born at 79 lbs, this fella had a lot of growing to do to make it into the bull sale pen. Another good polled Launch son. His Jose Cuervo dam has some larger-framed, highly maternal bulls in her pedigree. Lampoon has small goggles and adequate muscling all on a moderate frame. He has really come on this past month, big barreled, excellent skull, and a soggy build. ~Hetero Polled ~Diluter Free~

FAIRVIEW EVOLUTION 318H  
S: KEET'S LAUNCH 28L  
KEET'S FATIMA 20F

SILVER LAKE JOSE CUERVO 137J  
D: CROSSROAD LILEY 220L  
CROSSROAD DEKORA 443D

62

CROSSROAD *Lineman* 24N

S1498544

CRF 24N

JAN 2 2025

POLLED/SCURS FF

CE  
11.3  
BW  
2.7  
WW  
70.3  
YW  
101.4  
MILK  
34.7  
MCE  
8.4  
MWWT  
69.9

BW  
72  
SEP01  
WW  
838  
205 ADJ  
790  
365 ADJ  
1345



24N is out of the kids show cow, Crossroad Luba. She was the grand champion female at the Prince Albert Regional 4-H show in 2024 and has surpassed expectations as she has entered production. She is extremely sound, long spined, big middled, and features an exceptional udder. This past summer, Luba and Lineman were shown as a pair at the National YSCA Show in Weyburn, where they won the Fullblood division. Lineman closely resembles his sire in almost every way, being smooth shouldered, strong-footed, and backed by an outstanding cow. With the combination of low birth weight and exceptional growth, Lineman is a true calving ease option with plenty of performance. ~Diluter Free~

FAIRVIEW EVOLUTION 318H  
S: KEET'S LAUNCH 28L  
KEET'S FATIMA 20F

ZSL MR ACUNA 107J  
D: CROSSROAD LUBA 41L  
CROSSROAD GABBY 5G



63

CROSSROAD *Lasso* 128N

P1503407

CRF 128N

JAN 14 2025

POLLED FB

CE  
8.7  
BW  
2.8  
WW  
79.4  
YW  
115.6  
MILK  
33.7  
MCE  
5.6  
MWWT  
73.4

BW  
85  
SEP01  
WW  
776  
205 ADJ  
768  
365 ADJ  
1397



FAIRVIEW EVOLUTION 318H  
S: KEET'S LAUNCH 28L  
KEET'S FATIMA 20F

ZSL MR ACUNA 107J  
D: CROSSROAD LORENA 130L  
CROSSROAD YALANA 491Y

Here is another good bull from our homo polled Launch herd sire, who has worked very well for us in the heifer pen. Lasso is the first calf from a stylish heifer that goes back to our old Yalana cow that has raised twelve calves for us over the years. Nine were sold in sales, and we have two daughters in the herd. We just shipped her in the fall, but not before we flushed her, hoping for a few more daughters in the future. Stacked with maternal strengths and an undeniable production record in his pedigree, we are confident 128N will pass down a ton of these qualities into the calves he sires. ~Hetero Polled ~Diluter Free~

64

CROSSROAD *Lennox* 187N

P1503530

CRF 187N

JAN 25 2025

POLLED FB

CE  
9.9  
BW  
3.7  
WW  
78.9  
YW  
113.1  
MILK  
28.0  
MCE  
5.7  
MWWT  
67.5

BW  
86  
SEP01  
WW  
787  
205 ADJ  
810  
365 ADJ  
1496



FAIRVIEW EVOLUTION 318H  
S: KEET'S LAUNCH 28L  
KEET'S FATIMA 20F

BRSE FB POL BATMAN 45H  
D: CROSSROAD LAGER 207L  
CROSSROAD GOLDIE 197G

Lots of substance in this long-bodied Launch son. An 86-pound birth weight and 9.9 calving ease come from both sides of his pedigree, with Launch and Batman being sires we used successfully in the heifer pen. This heifer did a good job on her first try, he's been packing on the pounds till she weaned him and has done nothing but gain from then on. 187N is very versatile and will be a useful herd sire for his new owners. ~Hetero Polled ~Diluter Free~



## Customer Testimonial

### CATTLE CREEK CROSSING FARM - 45 Bulls

Cattle Creek Crossing Farm, Shell Lake Sask is owned and operated by Wayne and Lenore Jessop and their family. We are located 6 miles East of the Woytiuk's farm. We purchased our farm in 1981, 45 years ago, started out small and currently farm 3800 acres and have downsized the cow herd from 200 to 100. Our son Jason and wife Netta are now taking over the farm and living in the farmyard. Lenore and I have moved ½ mile away to the lake house on Pratt Lake. The farm being moderate in size, has raised 4 wonderful kids, who are all doing fine and we are so proud of them and their families.

Our cow herd is all Crossroad Farm influenced. We started buying bulls in 1998 and I don't think we have ever missed a year. We even bought one while sitting on the beach in Mexico with the whole family watching the sale on the internet. The Crossroad Bull Sale day is always a nervous day for me, not knowing if I will get a bull that I have picked out. Some sales my wife gives me a "what the hell" look, but it all turns out great. Jason says dad doesn't know when to stop bidding. Ever since we started buying bulls from Gerald and Laurie in 1998, our cow herd has improved big time. Now 27 years later, it's still hard for me to part with the heifer calves. We always retain 12 heifer calves and are so proud of them. We have sold replacement heifer calves in the spring and have gotten some good dollars for them. The Crossroad cow herd is fantastic; they are at the top of the Simmental industry, and the bulls get better every year. Crossroad Farms gets new blood lines every year, so there is always something to look at. The work they put into their herd is unreal and the Woytiuk grandkids are now giving us advice which bull will work with our cowherd. We hope Jason continues to buy Crossroad bulls when I am out of the picture. Also, Crossroad offers great service, if there is a problem with a bull they are always right there to help or replace it. Why would we go anywhere else?

This is Crossroads 20th year and we want to congratulate them with 20 great years of bulls and females and we know it will be many more years of fantastic cattle. From all the Jessops thank you and congratulations!

## YCSA

Over the past several years, our family has been deeply involved with the Young Canadian Simmental Association. Olivia and Shelby served on the Saskatchewan YCSA board for two years, where they gained valuable experience planning shows, coordinating events, and working closely with fellow breeders on sponsorship and organization. All four of the kids attended the 2024 and 2025 National YCSA show. They enjoyed their time meeting and getting to know other young producers within the breed. We are proud sponsors of the YCSA program and truly appreciate the opportunities, education, and experiences it has provided our kids. We strongly encourage this program to any other young Simmental enthusiasts out there!



Champion Fullblood Female YCSA Calf sells as lot 62



Champion Fullblood Bull sells as lot 45



65

CROSSROAD *Shockwave* 193N

BPG1503537

CRF 193N

JAN 26 2025

BLACK POLLED PB

S: CROSSROAD BLACK MAGIC 91H  
CROSSROAD BLACK MISSILE 75K  
CROSSROAD EGYPT 50F

D: CROSSROAD CONNECTED 12G  
CROSSROAD KLASSEY GIRL 142K  
CROSSROAD GOODIE GIRL 169G



This is one of the coolest built bulls on offer this year. So stout and robust, with plenty of heel and great size to his foot. His Connected dam is extremely angular, extended in through her front 1/3, and has that tidy Connected udder that can really feed a calf. We cannot stress the foot quality on the Connected progeny as we hold that value high in our program. As a late January calf, he has exceptional WW and YW EPD values, and his phenotype blatantly expresses that. You simply can't ignore the shape of rib and proud presentation this guy displays for his audience. Solid structured, hairy, big boned, and mass of body beyond measure. There isn't much more you could ask for! ~Homo Polled ~ Hetero Black~

CE  
2.3  
BW  
5.9  
WW  
97.9  
YW  
135.4  
MILK  
25.1  
MCE  
2.8  
MWWT  
74.1

BW  
95  
SEP01  
WW  
869  
205 ADJ  
855  
365 ADJ  
1497

66

CROSSROAD *Riot* 91N

BPTG1503738

CRF 91N

JAN 9 2025

BLACK POLLED PB

S: CROSSROAD BLACK MAGIC 91H  
CROSSROAD BLACK MISSILE 75K  
CROSSROAD EGYPT 50F

D: MRL UNTOUCHABLE 89G  
CROSSROAD KISSES 70K  
RF/MCC/CD JOY 511G



This is the heavyweight in the offering. With an actual WW of 981 and a YW of 1542, this bull is a no-doubter. He's an ET son of our high seller in 2022, Crossroad Black Missile, who has dropped some of our favourite calves here the past two years. His dam, Crossroad Kisses 70K, was an ET daughter herself off the Untouchable bull, who has built quite a name for himself as well. 91N is easily the longest bodied bull in the offering, with massive bone, and structure beneath him you couldn't make better. There's a pile of growth and performance in this pedigree, ensuring a heavy calf crop. ~Homo Polled ~ Homo Black~

CE  
0.2  
BW  
5.6  
WW  
102.4  
YW  
153.3  
MILK  
26.9  
MCE  
2.8  
MWWT  
78.1

BW  
103ET  
SEP01  
WW  
981  
205 ADJ  
902  
365 ADJ  
1756



**67****CROSSROAD *Detonator* 15N****BPTG1503553****CRF 15N****JAN 1 2025****BLACK POLLED PB**

CE  
2.9  
BW  
3.9  
WW  
95.8  
YW  
144.4  
MILK  
26.9  
MCE  
5.9  
MWWT  
74.8

BW  
**95ET**  
SEP01  
WW  
**858**  
205 ADJ  
**771**  
365 ADJ  
**1339**



S: CROSSROAD BLACK MAGIC 91H  
CROSSROAD BLACK MISSILE 75K  
CROSSROAD EGYPT 50E  
D: MRL UNTOUCHABLE 89G  
CROSSROAD KISSES 70K  
RF/MCG/GD JOY 51C

Another excellent deep-bodied Black Missile son, full of admirable qualities as all his sons are. We have several Missile daughters in the replacement pens that are standouts for their frame, depth of body, and soggy made. Detonator is a full transplant brother to lot 66, and his donor's natural Connected calf is lot 76. His Kisses dam has a feminine profile with a very nice udder. She is bred for January to 30-06, and we would sure like a daughter from this elite female. Here is a bull that has acquired the best traits from each of his parent's; he will no doubt add quality to his future progeny. ~Homo Polled ~ Homo Black~

**68****CROSSROAD *Platoon* 179N****BPG1503522****CRF 179N****JAN 23 2025****BLACK POLLED PB**

CE  
3.6  
BW  
6.2  
WW  
82.9  
YW  
120.1  
MILK  
25.7  
MCE  
4.1  
MWWT  
67.2

BW  
**104**  
SEP01  
WW  
**919**  
205 ADJ  
**872**  
365 ADJ  
**1438**



S: RF CALIBER 014G  
IPU 30-06 47K  
IPU MS. BLACK LOTTO 144A  
D: SPRINGCREEK LAUNCH 110E  
MAF MONTANA 168J  
MAF MONTANA 301D

Talk about length, you have to commend him for his overall mass of power and frame. His sire, IPU 30-06 47K was purchased as the high seller from Labatte Simmentals in 2023. This is his second set of calves, and all eight sons on offer are impressive from top to bottom. His Meadow Acres dam has the ability to feed a calf to its maximum potential, as you can see with this guy. With a 919 lb weaning weight, this early maturing bull will pack the pounds onto his calves. At 10 months old, he measured 40cm, proving his potential to enter the workforce. ~Homo Polled ~ Hetero Black~



69

CROSSROAD *Weaponry* 177N

BPG1503520

CRF 177N

JAN 23 2025

BLACK POLLED PB

CE  
10.4  
BW  
1.8  
WW  
77.9  
YW  
111.4  
MILK  
21.4  
MCE  
6.9  
MWWT  
60.4

BW  
86  
SEP01  
WW  
783  
205 ADJ  
743  
365 ADJ  
1372



RF CALIBER 014G  
S: IPU 30-06 47K  
IPU MS. BLACK LOTTO 144A

WHL RED HEAT 1734E  
D: CROSSROAD JAIDA 46J  
DEEG MS GEMINI 117G

Another 30-06 son here that is solid black with an 86lb birth weight, but a pile of growth. He has really impressed us since weaning. This is the third good son his dam has produced for the sale and has certainly earned her keep by pumping out quality every year. Here is a bull that is solid made, well-balanced, with great length of spine and structure that's hard to knock. Be sure to check him out on sale day. ~Homo Polled ~ Hetero Black~

70

CROSSROAD *Payweight* 103N

BPTG1503576

CRF 103N

JAN 11 2025

BLACK POLLED PB

CE  
5.5  
BW  
3.7  
WW  
90.9  
YW  
134.4  
MILK  
26.6  
MCE  
3.7  
MWWT  
72.1

BW  
101ET  
SEP01  
WW  
981  
205 ADJ  
887  
365 ADJ  
1405



RF CALIBER 014G  
S: IPU 30-06 47K  
IPU MS. BLACK LOTTO 144A

LFE HOOVER 847D  
D: LFE BS BLACK BETTY 2250J  
LFE BS KATARINA 2067A



Donor: LFE Black Betty 2250J

A really neat ET bull off two of our favourite black cattle here at the farm. IPU 30-06 47K has done an outstanding job breeding here. Adding a pile of length and a dependable foot to his progeny. His dam LFE BS Black Betty, was purchased from Lewis Farms Leading Lady Sale for \$22,000 in 2023. Her first natural daughter just sold in the Border City Sale for \$16,500 to McIntosh Livestock. He measured in at 38cm for a December scrotal and weaned off just over 980 lbs. If that doesn't impress you, we don't know what will. Deep-sided, big-footed, masculine, and an easy looker. Homo black and homo polled here is a high-performing bull with a lot to like. ~Homo Polled ~ Homo Black~



71

CROSSROAD *Conquest 254N*

BPG1503829

CRF 254N FEB 18 2025

BLACK POLLED PB

CE  
4.8  
BW  
2.9  
WW  
82.4  
YW  
129.0  
MILK  
26.6  
MCE  
3.4  
MWWT  
67.8

BW  
93  
SEP01  
WW  
715  
205 ADJ  
758  
365 ADJ  
1528



RF CALIBER 014G  
S: IPU 30-06 47K  
IPU MS. BLACK LOTTO 144A

LEF HOOVER 847D  
D: LEF BS BLACK BETTY 22501  
LEF BS KATARINA 2067A

Here is a younger version, the natural son out of 30-06 and our Black Betty donor cow. He carries the exact same pedigree along with the same abundance of qualities, but on a smaller frame in comparison to the Lot 70 bull. You can expect him to sire females with great udders and sons full of high volume and performance. There will continue to be high demand for cattle with this quality and body type. A great opportunity for our customers to choose the same genetics in a slightly different package. ~Homo Polled ~ Homo Black~

72

CROSSROAD *Squadron 239N*

BPG1503810

CRF 239N FEB 9 2025

BLACK POLLED PB

CE  
6.0  
BW  
4.8  
WW  
88.8  
YW  
132.2  
MILK  
24.7  
MCE  
5.9  
MWWT  
69.1

BW  
101  
SEP01  
WW  
820  
205 ADJ  
829  
365 ADJ  
1503



RF CALIBER 014G  
S: IPU 30-06 47K  
IPU MS. BLACK LOTTO 144A

SPRINGCREEK ALL IN 155Y  
D: CROSSROAD DE-VI 468D  
CROSSROAD TIFFANY 719T

Well, not sure if there is enough room on the page for this good bull's dam's production record. She has pumped out progeny for us like no other. This is her 8th consecutive calf, Black Gold, Pernitsky Farms, Silver Lake, Aarrestad's, and Robert Ellingson from South Dakota have all purchased progeny. We have one daughter in the herd that is on the same track as her dam to be "one of those" whose calves always rise to the top. Both mother and daughter are bred back to 30-06, and we are sure hoping for daughters. Here is a solid black bull, loaded with potential, just check out the growth of this February calf. You will probably change his name to "Money Maker" after you sell your first set of calves. No guesswork on this one. ~Homo Polled ~ Homo Black~



73

CROSSROAD *Ceasefire* 85N

BPG1503380

CRF 85N

JAN 9 2025

BLACK POLLED PB

CE  
6.0  
BW  
5.7  
WW  
88.6  
YW  
141.2  
MILK  
23.5  
MCE  
5.2  
MWWT  
67.8

BW  
95  
SEP01  
WW  
803  
205 ADJ  
724  
365 ADJ  
1490



RF CALIBER 014G  
S: IPU 30-06 47K  
IPU MS. BLACK LOTTO 144A

LFE PROSECUTOR 362C  
D: CROSSROAD JAMBORÉE 221J  
CROSSROAD FERGIE 20F

Another quality 30-06 son structured well, solid black with the same positive attributes that 30-06 stamps on all his progeny. His dam is a real honest cow- even Jody can't pick any holes in her. She is a fancy black blaze, just the perfect size, structured well, with a good udder, excellent mothering ability, and good temperament too. Bred for another January calf to Landman, we would sure like a daughter. Ceasefire is very attractive through his sleek skull shape that carries to his well-balanced muscled frame. Trusted bloodlines in this good bull's make-up guarantee that he will sire some good ones. ~Homo Polled ~ Hetero Black~

74

CROSSROAD *Defence* 111N

BPTG1503751

CRF 111N

JAN 11 2025

BLACK POLLED 7/8 PB

CE  
10.0  
BW  
2.1  
WW  
75.7  
YW  
109  
MILK  
23.7  
MCE  
6.7  
MWWT  
61.6

BW  
94ET  
SEP01  
WW  
862  
205 ADJ  
776  
365 ADJ  
1470



RF CALIBER 014G  
S: IPU 30-06 47K  
IPU MS. BLACK LOTTO 144A

ACCT1 HUSTLER 2N  
D: TSZ KEEPSAKE 703A  
TSZ ECLIPSE 502Y

Two embryo transplants, from our prolific producing Keepsake cow that has thirty-plus calves to her credit. This bloodline crosses very well with 30-06. 111N is solid black with adequate thickness and good testicle development; he has a little more frame than his lot 75 brother. Be sure to check out our videos in early February to see how the bulls have progressed. ~Homo Polled ~ Homo Black~

Donor: TSZ Keepsake 703A



**75****CROSSROAD *Frontline* 68N**

BPTG1503752

CRF 68N

JAN 6 2025

BLACK POLLED 7/8 PB

CE  
12.8BW  
1.1WW  
76.3YW  
104.5MILK  
23.7MCE  
6.5MWWT  
61.9BW  
78ET

SEP01

WW  
801

205 ADJ

707

365 ADJ

1297

RF CALIBER 014G  
S: IPU 30-06 47K  
IPU MS. BLACK LOTTO 144AACG1 HUSTLER 2N  
D: TSY KEEPSAKE 703A  
TSY ECLIPSE 502Y

Similar in type to the last bull with moderate birth weight too. His recipient dam fed him well to get him from 78 pounds at birth to 800 at weaning. The 30-06 daughters in the replacement pen are unique with ample frame, powerful muscle expression, style and teat placement. Frontline is a solid black deep bodied bull on a moderate frame that will sire some incredibly sweet daughters and sons that will not disappoint. ~Homo Polled ~ Homo Black~

**76****CROSSROAD *Immortal* 180N**

BPG1503523

CRF 180N

JAN 23 2025

BLACK POLLED PB

CE  
9.8BW  
0.3WW  
74.5YW  
114.6MILK  
24.8MCE  
6.1MWWT  
62.1BW  
79

SEP01

WW  
826

205 ADJ

805

365 ADJ

1421

CROSSROAD RED STEYSON 9E  
S: CROSSROAD CONNECTED 12G  
PERKS BLACK DOLL 1121YMRL UNTOUCHABLE 89G  
D: CROSSROAD KISSES 70K  
RF/MCC/CD JOY 511C

We have four black and three red Connected sons this year plus a couple fancy daughters in the heifer section. We are very pleased with all our Connected progeny and proud to have raised this widely used herd sire. 180N is an extremely good bull with a ton of natural thickness and a real elevated presence. Born in late January at only 79 pounds, he has really packed on the pounds. He was a member of our black pen of three at the Edam Fall Fair. He is the natural calf off our Kisses donor cow. She has two other strong transplant sons in the sale, lots 66 & 67. 180N checks off all the boxes, he has an incredibly good genetic package to buy into. ~Homo Polled ~ Homo Black~



77

CROSSROAD *Unite* 215N

BPG1503789

CRF 215N

FEB 1 2025

BLACK POLLED PB

S: CROSSROAD RED STEJTON 9E  
PERKS BLACK DOLL 1121Y

D: CROSSROAD G00DIE GIRL 169G  
HARKERS ICON  
CROSSROAD DANTE 121D



"Lots of thickness here", is what my summer and fall notes say. His Harker's Icon dam has two outstanding daughters working in the herd with their son's both making it to the sale, check out lots 65 & 88. His dam is due to our exciting new black blaze herd sire RWR Vortex for mid-January. 215N has a great cow family on his maternal side and so does his sire, Crossroad Connected who has over 600 progeny registered and at seven years old he still very sure footed and athletic. Lots of predictability here with this February born solid black bull loaded with qualities that are sure to impress. ~Homo Polled ~ Homo Black~

CE

7.9

BW

5.2

WW

79.4

YW

107.8

MILK

21.6

MCE

1.5

MWWT

61.3

BW

101

SEP01

WW

889

205 ADJ

864

365 ADJ

1406

78

CROSSROAD *Wingman* 223N

BPG1503794

CRF 223N

FEB 3 2025

BLACK POLLED PB

S: CROSSROAD RED STEJTON 9E  
PERKS BLACK DOLL 1121Y

D: CROSSROAD HABANERA 154H  
LCOR AMERICAN RED 99E  
PWK MS RUBY 52Y 7A



Here is a bigger framed black Connected son in a striking package with that all important facial chrome. His dam is a good uddered American Red daughter that raised a full brother that was purchased by Aiken Farm & Ranch. 223N is a young bull that exhibits good testicle size, excellent growth, ample thickness and along with his combination of proven genetics, we are confident he will mature into a very complete money making herd sire. ~Homo Polled ~ Hetero Black~

CE

4.0

BW

6.3

WW

88.0

YW

137.2

MILK

26.9

MCE

0.3

MWWT

70.9

BW

106

SEP01

WW

876

205 ADJ

858

365 ADJ

1594



CE  
6.8  
BW  
5.2  
WW  
80.3  
YW  
118.8  
MILK  
27.1  
MCE  
6.2  
MWWT  
67.3

BW  
99  
SEP01  
WW  
760  
205 ADJ  
767  
365 ADJ  
1333



CROSSROAD RED STEJSON 9E  
S: CROSSROAD CONNECTED 12G  
PERKS BLACK DOLL 1121Y  
WHEATLAND KILL SWITCH  
D: CROSSROAD HAZEL 51H  
CROSSROAD URSULA 791U

Another good Connected son, we have several of his good uddered daughters working in the herd and they all raise consistently good calves. This son is one of the youngest in the sale this year but you probably won't notice that by sale time. He shows great thickness and testicle size. He has some identifying white facial markings to add to his stylish appeal too. His Kill Switch dam has raised some good ones for us and will add maternally to this young bull's credentials. He will contribute a ton of value to your next calf crop. ~Hetero Polled ~ Hetero Black~

## Feature Volume Buyer

### RIVERBEND FARMS - 50 Bulls

Riverbend Colony has bought bulls from us since the very beginning of our purebred program and long before we hosted our own sale. Riverbend Colony is located near Waldheim, Saskatchewan, along the shores of the North Saskatchewan River, just an hour away from us. They calve approximately 380 cows in April to June, along with about 100 heifers each March.

Riverbend is a progressive operation that has diversified with grain farming, wood working, metal work and even coffee roasting.

Over the years, they have bought 50 bulls from us since 1999. Ben, Albert and Gary have an exceptional eye for cattle and each year spend a lot of time in the bull pens going over the animals. When asking Ben what he thought of our bulls he said that the bulls have been consistent, reliable breeders and have worked extremely well in their program.

Riverbend started out as customers which turned into a great friendship. Gerald has had many great social visits and phone conversations with Ben over the years. Gerald and Ben have even went on a few memorable fishing trips. It is always a great afternoon for all of us when the boys from Riverbend come to look at cattle.

We have a very good working relationship with Riverbend and also a valued friendship that we look forward to maintaining for years to come.





80

BROOKSLAND *Tycoon* 506N

BPG1514337

BLF 506N

JAN 23 2025

BLACK POLLED PB

CE  
1.6  
BW  
6.1  
WW  
107.6  
YW  
155.1  
MILK  
26.6  
MCE  
2.4  
MWWT  
80.4

BW  
92  
SEP01  
WW  
820  
205 ADJ  
766  
365 ADJ  
1686



S: SVS BROOKS 669D  
SVS TYCOON 841F  
SVS RED ANNIE 411B

D: LEE MCDAVID 413C  
SPRINGCREEK ABBEY 99E  
SPRINGCREEK ABBEY 10Z

Donor: Springcreek Abbey 99E

506N was purchased as a calf alongside his dam, Springcreek Abbey 99E pictured below. She is one of many well-known donors from their renowned program. When they dispersed, we knew we should've bought her. Abbey is exactly what we look for in a cow, big framed, square-footed, and most importantly, a proven producer that consistently passes on her best traits. When the opportunity arose from Brooksland, we jumped at the chance to purchase her. 506N comes from a pedigree that simply works. SVS Tycoon is one of the most proven bulls in the industry, and Abbey raised the top-quality Springcreek Estate bull a few years back. 506N himself is a big-framed, sound-footed bull that will add pounds to his calves while leaving a lasting impact on his daughters. This bull combines performance, pedigree, and phenotype, all tied neatly within his large frame. ~Homo Polled ~ Hetero Black~

81

CROSSROAD *Severin* 147N

BPG1503424

CRF 147N

JAN 17 2025

BLACK POLLED PB

CE  
6.2  
BW  
3.8  
WW  
82.3  
YW  
116.6  
MILK  
28.2  
MCE  
0.5  
MWWT  
69.4

BW  
96  
SEP01  
WW  
917  
205 ADJ  
871  
365 ADJ  
1569



MRL CAPONE 130B  
S: MRL SYSCO 14D  
MRL MISS 76U

D: CROSSROAD BLACK MAGIC 91H  
CROSSROAD KATIE-RAE 82K  
CROSSROAD ANNA-RAE 427A

We have sold many top-end Sysco sons over the past several years. They are always in high demand, and unfortunately, this is our only one this year, and he is solid black. His powerful dam raised an awesome Battlefield son last year that was purchased by Moore Ranch at Loon Lake. Her son this year is also very good, full of potential; he will mature into a massive thick bull. We sure enjoy watching these heavyweights grow, depth, and muscle seem to get more impressive every week, and he shows excellent testicle size too. If you are looking for a black bull that will add some pounds to the calves he sires, you had better put a big circle on February 25 and come to our sale. ~Homo Polled ~ Hetero Black~



**82****CROSSROAD *Honour* 214N**

BPG1503788

CRF 214N

FEB 1 2025

BLACK POLLED PB

CE  
5.0  
BW  
3.7  
WW  
80.1  
YW  
121.8  
MILK  
22.2  
MCE  
5.2  
MWWT  
62.3

BW  
93  
SEP01  
WW  
832  
205 ADJ  
820  
365 ADJ  
1559



LCDR FAVOR 149F  
S: GRASS ROOTS ESTEEM 204  
HPF VALENTINE Z322  
LFE PROSECUTOR 362C  
D: CROSSROAD JOLI-V-EE 152J  
CROSSROAD ELLE LIVIA 51E

Although we only have two Esteem sons on offer, there is no lack of presence and potential in these two bulls. 214N is a February-born son off of a large, framed, powerful LFE Prosecutor dam. His growth has been exceptional this fall, with a commendable ADG that led to an actual yearling weight of 1317lbs. This bull has filled out tremendously well, expressing a vigorous muscle pattern while being so long-bodied. The Esteem bull has complemented our program very well, adding style and extension to our big broody cow herd. This is a bull we really admire for his skeletal structure and size of bone; he is going to mature into a powerhouse of a herd sire. ~Homo Polled ~ Hetero Black~

**83****CROSSROAD *Dignity* 182N**

BPG1503525

CRF 182N

JAN 24 2025

BLACK POLLED PB

CE  
7.8  
BW  
2.3  
WW  
87.4  
YW  
138.5  
MILK  
21.1  
MCE  
5.8  
MWWT  
64.8

BW  
83  
SEP01  
WW  
825  
205 ADJ  
807  
365 ADJ  
1530



LCDR FAVOR 149F  
S: GRASS ROOTS ESTEEM 204  
HPF VALENTINE Z322  
BLACK GOLD APPROVAL 71E  
D: CROSSROAD KELOWNA 56K  
CROSSROAD HELONA 122H

This strong-built, blaze-faced Esteem son is one to appreciate for his balanced, attractive profile. Despite this, he is still extremely rugged and tough-built. His mother is a BGS Approval daughter who is more on the moderate side but manages to feed a calf to its utmost potential year after year. Much like his sire, there is a lot of style and extension to note. This is a bull we love for his masculine skull, wide and level top, square build, and loud presence. ~Homo Polled ~ Hetero Black~



84

CROSSROAD *Athens* 28N

BPG1498548

CRF 28N

JAN 2 2025

BLACK POLLED PB

BEE ALPHA 915J  
S: RED TOP ALPHA 71L  
SKORS RED FORTUNE 176YTSZ MADOC 305F  
D: CROSSROAD JAMESA 78J  
CROSSROAD DESTA 53D

We are pleased to offer our customers a new bloodline with some Red Top Alpha sons in the red section, but also these two awesome blacks. Here is a super impressive bull that was admired all summer. His Madoc dam is excellent uddered and can really feed a calf, she brings home a good one every year. Her last year's good son was purchased by Stroh Farms from North Dakota. 28N was one of our heavyweights at weaning. He carries definite bull presence with his incredibly thick stature. Measuring 38cm at 11 months of age; this guy means business when it comes to getting the job done. He has very good bloodlines, with top-producing cows layered throughout both the top and bottom of his pedigree. A lot of potential here that is guaranteed to move your program forward. ~Homo Polled ~ Hetero Black~

CE  
9.5  
BW  
2.4  
WW  
80.1  
YW  
115  
MILK  
24.0  
MCE  
6.1  
MWWT  
64.1

BW  
100  
SEP01  
WW  
1012  
205 ADJ  
884  
365 ADJ  
1487

85

CROSSROAD *Adrenaline* 77N

BPG1499389

CRF 77N

JAN 7 2025

BLACK POLLED 7/8 PB

BEE ALPHA 915J  
S: RED TOP ALPHA 71L  
SKORS RED FORTUNE 176YRFS HEAVY HITTER H45  
D: CROSSROAD LADY LIKE 73L  
TSZ KEEPSAKE 703A

This blaze face Red Top Alpha son will kick off our black calving ease section. A bull with a lot of depth and hard muscle. A 13.8 CE, with great scrotal development and good temperament too. His first calver dam is one of the eight daughters from the TSZ Keepsake X RFS Heavy Hitter flush that highlighted our bull sale two years ago. 77N took after a lot of her traits: deep middled, big-barreled, and wide-topped. The Alpha bulls are one of our favourite calving ease crops we have ever offered, and this guy only adds to the high standard of his progeny. ~Homo Polled ~ Hetero Black~

CE  
13.8  
BW  
-0.9  
WW  
82.9  
YW  
121.1  
MILK  
22.6  
MCE  
6.7  
MWWT  
64.1

BW  
83  
SEP01  
WW  
864  
205 ADJ  
827  
365 ADJ  
1585



**86****CROSSROAD *Ironclad* 1N**

BPG1498431

CRF 1N

JAN 1 2025

BLACK POLLED PB

CE  
10.5  
BW  
4.1  
WW  
89.8  
YW  
141.3  
MILK  
19.9  
MCE  
3.0  
MWWT  
64.8

BW  
90  
SEP01  
WW  
875  
205 ADJ  
820  
365 ADJ  
1543



S: SRH HANNIBAL 5H  
SRH PRECIOUS 73A  
REMINGTON LOCK N LOAD 54U  
D: CROSSROAD LILAC 37L  
CROSSROAD GRACIE 77G  
MRL SYSCO 14D

We have one Hannibal son on offer this year. He brings an excellent blend of calving ease and power in his pedigree, making him a strong candidate for second- and third-calvers. Ironclad is a moderate-framed, thick, and compact made bull. He has the kind of shape and muscle expression that will hold up in any program. His dam, Lilac, has six full sisters in the herd, all of which are proving themselves as exceptional bull producers, adding even more confidence to this mating. Hannibal himself is well known for his modest birth weight and strong performance. This is a bull with proven genetics, structural quality, and practical functionality, a bull you definitely won't want to miss out on. ~Homo Polled ~ Hetero Black~

**87****CROSSROAD *Spartan* 148N**

BPG1503425

CRF 148N

JAN 17 2025

BLACK POLLED PB

CE  
16.0  
BW  
1.1  
WW  
78.8  
YW  
107.8  
MILK  
26.5  
MCE  
9.4  
MWWT  
65.9

BW  
69  
SEP01  
WW  
779  
205 ADJ  
779  
365 ADJ  
1320



S: MRL BATTLEFIELD 249J  
MRL MISS 2490Z  
HART STATE OF WAR 056C  
D: CROSSROAD LANTANA 86L  
CROSSROAD HONDA 79H  
CROSSROAD BLACK ACCOLADE 145H

Spartan is a true sale feature that combines elite calving ease with outstanding growth and performance. He posted an actual birthweight of just 69 lbs and an impressive calving ease EPD of 16.0 making him a fail-safe first calver option. Backed by our black calving ease specialist, MRL Battlefield 249J, who has successfully been used in the heifer pen for several years. On his bottom side sits a cow family we think extremely highly of. Tracing back to the influential TSZ Madoc, known for adding maternal strength and gorgeous udders. Spartan doesn't stop at calving ease; he has proven to still deliver a ton of growth. Check this guy out on sale day for his extreme shape, small skull, and superb structure. This is the kind of bull that will leave you with low birthweight, easy calving calves that get up and grow fast. We couldn't recommend this guy enough as a dependable option for the heifer pen. ~Hetero Polled ~ Homo Black~



88

CROSSROAD *Warzone* 14N

BPG1498447

CRF 14N

JAN 1 2025

BLACK POLLED PB

HART STATE OF WAR 056C  
S: MRL BATTLEFIELD 249J  
MRL MISS 2490Z

MRL SYSCO 14D  
D: CROSSROAD LAVISH 44L  
CROSSROAD GOODIE GIRL 169G



Very similar in type and kind to his paternal brother previously. 14N is a moderate-framed, hairy, loose-made bull. Off a first calver Sysco daughter who exhibits a beautiful udder, a ton of capacity, and a pile of performance. These Battlefield calves come out with a pile of vigour and growth. The shape and dimension of these calving ease bulls is hard to acquire, and these Battlefield sons really do a great job of showcasing their utmost potential. We truly think the world of this set of black calving ease bulls. ~Homo Polled ~ Hetero Black~

CE  
10.6  
BW  
0.9  
WW  
71.3  
YW  
91.6  
MILK  
26.8  
MCE  
3.2  
MWWT  
62.5

BW  
79  
SEP01  
WW  
826  
205 ADJ  
776  
365 ADJ  
1445

89

CROSSROAD *Outpost* 19N

BPG1498539

CRF 19N

JAN 2 2025

BLACK POLLED 7/8 PB

HART STATE OF WAR 056C  
S: MRL BATTLEFIELD 249J  
MRL MISS 2490Z

RFS HEAVY HITTER H45  
D: CROSSROAD LADY DELILAH 108L  
TSZ KEEPSAKE 703A



Another great Battlefield son coming to you with a 75 lb birth weight and a 14.0 calving ease EPD. He is one of the few that ranks above average in 11/13 EPD categories. His exceptional first calving dam is one of the eight daughters from the TSZ Keepsake X RFS Heavy Hitter flush. She not only fed him well but certainly has contributed to this good bull's EPD profile. Outpost is solid black, moderate framed, thick, and solid in his structure. Full of potential, here is one to consider. ~Homo Polled ~ Hetero Black~

CE  
14.1  
BW  
0.3  
WW  
79.4  
YW  
101.1  
MILK  
26.4  
MCE  
8.5  
MWWT  
66.1

BW  
75  
SEP01  
WW  
865  
205 ADJ  
811  
365 ADJ  
1187



90

CROSSROAD *Warlord* 106N

BPG1503389

CRF 106N

JAN 11 2025

BLACK POLLED PB

CE

10.5

BW

2.1

WW

74.6

YW

98.6

MILK

23.7

MCE

5.9

MWWT

61.0

BW

95

SEP01

WW

832

205 ADJ

776

365 ADJ

1333



HART STATE OF WAR 056C  
S: MRL BATTLEFIELD 249J  
MRL MISS 2490Z

LLW CARD TRUE NORTH 671  
D: CROSSROAD KODIAC 110K  
IPU MS. CODE RED 249A

There is a ton of quality in this Battlefield son behind the white. Extremely athletic and soggy, he's a bull with a ton of length and width. On his bottom side lies the prolific Code Red donor cow, who is purposely woven through our herd for the quality and consistency of her genetics. 106N is one we would strongly recommend for a group of second calvers, as his build screams moderate calving ease with that added frame and mass of bone. ~Homo Polled ~ Homo Black~

91

CROSSROAD *Inferno* 99N

BPG1504622

CRF 99N

JAN 10 2025

BLACK POLLED PB

CE

8.2

BW

3.7

WW

74.2

YW

106.7

MILK

21.2

MCE

4.1

MWWT

58.3

BW

96

SEP01

WW

803

205 ADJ

748

365 ADJ

1388



WLB TOP TIER 456G  
S: LRX TOP TIER 44K  
FSCI AYA B408

KCC1 COUNTERTIME 872H  
D: LFE BS HARLOW 2127K  
LFE BS HARLOW 665E

If you're looking to add a little extra chrome and eye appeal to your herd, 99N is the bull for you. His dam was purchased out of the Lewis Farms Leading Ladies Sale for \$25,000 and is sired by KCCI Countertime, a bull that has become a household name in Canada in recent years for his consistent ability to produce high-quality, standout progeny. 99N himself is a compact, moderate-framed bull with a solid, well-structured foot, making him both durable and functional. Sired by the LRX Top Tier bull, 99N offers a strong combination of calving ease and growth, giving you the flexibility to improve your calf crops. With his attractive phenotype, proven genetics, and balanced performance, 99N is a bull that will add both style and substance to your herd for years to come. ~Homo Polled ~ Homo Black~



# REPLACEMENT HEIFERS

92

CROSSROAD *Nashville* 153N

PG1503431

CRF 153N

JAN 18 2025

POLLED PB

CE  
4.2  
BW  
3.9  
WW  
101.3  
YW  
161.9  
MILK  
24.6  
MCE  
2.8  
MWWT  
75.3

BW  
98  
SEP08  
WW  
803  
205 ADJ  
730  
365 ADJ



S: PERKS POTENT 309H  
CIRCLE G REGULATOR 70L  
KS MISS RED RIDGE E48  
D: WS EPIC E152  
CROSSROAD JOLLY 52J  
CROSSROAD GINGLES 180G

A feminine, big barrelled, stout made Regulator daughter leads the way for the heifers. 153N has all the bells and whistles for a broody production female. Her dam was a punchy, made Epic daughter with a lot to admire about her - a beautiful udder, clean fronted, yet explosive in her body makeup. The Regulator daughters are equally impressive as the sons. Hairy, long-bodied, excellent on the move. 153N finds herself in the top 3% for both WW and YW, making her an excellent candidate for a bull maker. ~Homo Polled ~

93

CROSSROAD *New Orleans* 59N

PG1498588

CRF 59N

JAN 6 2025

POLLED PB

CE  
7.4  
BW  
3.1  
WW  
90.6  
YW  
130.1  
MILK  
24.8  
MCE  
4.8  
MWWT  
70.1

BW  
91  
SEP08  
WW  
811  
205 ADJ  
694  
365 ADJ



S: MADER WALK THE LINE 92J  
CROSSROAD WESTERN 176L  
SPRINGCREEK LADY 139H  
D: CROSSROAD RED STONE 10E  
CROSSROAD HOMEMADE 61H  
CROSSROAD DEEDRA 40TD

59N is the lone Western female in this offering, and she is no slouch. Just like her paternal brothers, Lot 9 and 10, there is no lack of frame and mass of body on these cattle. 59N is patterned just like her mother, with the sought-after white face, big bone, deep side, and all the hair you could wish for. This is a female with a ton of quality and a bright future ahead. ~Homo Polled ~



94

CROSSROAD *Normandy* 252N

PG1503826

CRF 252N

FEB 17 2025

POLLED PB

CE  
2.6  
BW  
5.2  
WW  
86.6  
YW  
129  
MILK  
28.2  
MCE  
3.8  
MWWT  
71.5

BW  
97  
SEP08  
WW  
722  
205 ADJ  
697  
365 ADJ



LFE STRATTON 3094F  
S: CROSSROAD VALID 10L  
CROSSROAD DUSTY 430D  
WHEATLAND KILL SWITCH  
D: CROSSROAD KILL 61K  
CROSSROAD URSULA 791U

Here is one of two females we have on offer from Crossroad Valid 10L. She is long-hipped, square at the surface, and built with the right kind of shape and structure. She is the larger-framed option compared to her paternal sister in the sale. She's out of a good uddered female, a heifer that is sure to perform. ~Homo Polled ~

95

CROSSROAD *New York* 33N

PG1498553

CRF 33N

JAN 2 2025

POLLED PB

CE  
13.8  
BW  
0.6  
WW  
57.1  
YW  
83.7  
MILK  
24.8  
MCE  
7.3  
MWWT  
53.4

BW  
82  
SEP08  
WW  
650  
205 ADJ  
549  
365 ADJ



LFE STRATTON 3094F  
S: CROSSROAD VALID 10L  
CROSSROAD DUSTY 430D  
WHF LIMITLESS B011  
D: CROSSROAD FREEDA 36F  
CROSSROAD DEEDRA 401D

We are offering a strong set of progeny sired by Crossroad Valid 10L, including 14 sons and 2 heifers. A testament to the confidence we have in this bull. After using him in multiple flushes, his progeny have proven time and again to be among the most consistent standouts in both our bull and female pens, combining quality, balance, and performance. 33N is a solid, dark cherry red, moderate-framed female that exemplifies the kind of functionality and athleticism we value. She is sound on the move, travels freely, and maintains the structural integrity and balance needed to excel in a variety of production environments. ~Homo Polled ~



96

CROSSROAD *New Dehli* 108N

PG1503391

CRF 108N

JAN 11 2025

POLLED PB

CE  
11.7  
BW  
1.8  
WW  
83.9  
YW  
116.9  
MILK  
24.3  
MCE  
4.5  
MWWT  
66.3

BW  
78  
SEP08  
WW  
724  
205 ADJ  
688  
365 ADJ



BEE ALPHA 915J  
S: RED TOP ALPHA 71L  
SKORS RED FORTUNE 176Y  
IPU 9G TOP TIER 162J  
D: CROSSROAD LASHES 102L  
CROSSROAD JOAN 119J

A double-stacked CE pedigree on this compact made Alpha female. The Alpha bull stamps his calves consistently with the white blaze, and we have high hopes that his progeny will carry this forward. Her dam is a WLB Top Tier granddaughter, which adds CE while still having more than enough growth. 108N is the sweetheart of the pen, and between her docile temperament is a sound-structured replacement female with excellent capacity.

~Homo Polled ~

97

CROSSROAD *Norway* 30N

PG1498552

CRF 30N

JAN 2 2025

POLLED PB

CE  
12.2  
BW  
2.4  
WW  
73.2  
YW  
110.6  
MILK  
26.2  
MCE  
5.8  
MWWT  
62.8

BW  
78  
SEP08  
WW  
688  
205 ADJ  
638  
365 ADJ



KWA SHAMROCK 151H  
S: SPRINGCREEK SHERLOCK 140K  
SPRINGCREEK AMANDA 35F  
LFE STRATTON 3094F  
D: CROSSROAD LOCKET 93L  
CROSSROAD GINGLES 180G

If you want to talk about shape and added dimension from any angle, this is a heifer that stands out. She is simply a good cow in the making that is going to drop an exceptional udder. Ranking in the top 10% for calving ease, she offers maternal strength without sacrificing the true brood cow look. Her sire, Springcreek Sherlock 140K has been used for the last 3 years with consistent results that have surpassed our expectations. With only one son sired off of him this year along with these two daughters will be your only chance to acquire progeny this year from our proven calving ease Sherlock 140K herd sire.

~Homo Polled ~



98

CROSSROAD *Netherland* 227N

PG1503798

CRF 227N

FEB 5 2025

POLLED PB

CE

12.3

BW

0.8

WW

81.3

YW

120

MILK

28.0

MCE

4.8

MWWT

68.7

BW

69

SEP08

WW

743

205 ADJ

713

365 ADJ



Offered here is the other good daughter of Springcreek Sherlock 140K. Much like her sister, she impresses with ample shape, natural muscle expression, and a balanced, attractive profile. Ranking in the top 15% for calving ease. This heifer represents the consistency we've come to expect from Springcreek Sherlock 140K progeny—sound, functional cattle with maternal strength and long-term productivity in mind. ~Homo Polled ~

KWA SHAMROCK 151H  
S: SPRINGCREEK SHERLOCK 140K  
SPRINGCREEK AMANDA 35F  
WHEATLAND NEXT CENTURY 43H  
D: CROSSROAD LYNETTE 144L  
CROSSROAD FELICITY 99F

99

CROSSROAD *New Zealand* 168N

BPG1503512

CRF 168N

JAN 21 2025

BLACK POLLED PB

CE

6.9

BW

2.8

WW

87.9

YW

134.7

MILK

25.5

MCE

5.3

MWWT

69.5

BW

89

SEP08

WW

811

205 ADJ

733

365 ADJ



These Connected daughters are not to be overlooked, especially one of this caliber. We have an awesome group of his daughters retained for production, and we could not be more pleased with their records. Moderate framed females with neat and tidy udders, and they consistently give their all to their progeny. 168N is a female who carries a pile of depth and dimension. There is no lack of power and performance in her pedigree, and we have no doubt she will go on to prove herself for years to come. ~Homo Polled ~ Homo Black ~

CROSSROAD RED STEYSON 9E  
S: CROSSROAD CONNECTED 12G  
PERKS BLACK DOLL 1121Y  
HART STATE OF WAR 056C  
D: CROSSROAD GIGGLES 32G  
CROSSROAD ELLIE DEAN 88E



**100****CROSSROAD *Notre Dam* 228N**

BPG1503799

CRF 228N

FEB 6 2025

BLACK POLLED PB

CROSSROAD RED STEIJSO 9E  
S: CROSSROAD CONNECTED 12G  
PERKS BLACK DOLL 1121Y

CROSSROAD AMERICAN XPRESS 213G  
D: CROSSROAD JOZIE 79J  
CROSSROAD EMPRESS 71E



228N is a flashy-made, easy doing, awesome-haired February-born heifer. Her dam was one of the few American Xpress daughters in our herd, a cow so long-spined and deep-bodied. Throw in the Connected on the top side, and there is certainly no lack of pounds and performance with this genetic package. 228N follows in her mother's footsteps with extreme length of body and a super docile temperament. This is one with a super versatile future!  
~ Hetero Polled ~ Hetero Black ~

CE  
3.7  
BW  
5.3  
WW  
83.9  
YW  
128.7  
MILK  
26.4  
MCE  
2.7  
MWWT  
68.4

BW  
**100**  
SEP08  
WW  
**828**  
205 ADJ  
**747**  
365 ADJ

**101****CROSSROAD *Newmarket* 190N**

BPG1503535

CRF 190N

JAN 25 2025

BLACK POLLED PB

RF CALIBER 014G  
S: IPU 30-06 47K  
IPU MS. BLACK LOTTO 144A

R PLUS 9189G  
D: DEEG JOULE 120J  
WHL EXPECTATION 1503C



Here is a homo black, homo polled female on offer. She combines the influence of IPU on the top side with Deeg on the bottom, bringing together power and maternal reliability in one complete package. 190N is a twin but still flat out good. We cannot recommend our progeny from IPU 30-06 47K enough for their added length of spine, depth of body, big bone and extra frame. 10 of his sons averaged \$15,150 at last year's sale and this year we have another 8 extremely strong individuals in the bull pen- but the females are equally as impressive. ~Homo Polled  
~ Homo Black~

CE  
8.2  
BW  
2.7  
WW  
84.8  
YW  
122.9  
MILK  
22.8  
MCE  
5.5  
MWWT  
65.2

BW  
**72**  
SEP08  
WW  
**752**  
205 ADJ  
**665**  
365 ADJ



102

CROSSROAD *Nairobi* 158N

BPG1503435

CRF 158N

JAN 19 2025

BLACK POLLED PB

CE  
3.8  
BW  
4.9  
WW  
83.3  
YW  
121.7  
MILK  
22.1  
MCE  
5.2  
MWWT  
63.8

BW  
105  
SEP08  
WW  
733  
205 ADJ  
661  
365 ADJ



RF CALIBER 014G  
S: IPU 30-06 47K  
IPU MS. BLACK LOTTO 144A

TSZ MADOC 305F  
D: CROSSROAD HOOFPRIINT 194H  
ERIXON LADY 16B

Now, if you're looking to see a tank of a female, you need to see 158N's mother. A Madoc daughter that is as low to the ground as you can make them, with the foot and structure to support that much mass of body on top of it. The combination of the 30-06 bull in 158N's pedigree gives that added touch of frame and further strengthens the quality of foot in her makeup. 158N has that added pop of hair, great extension through her front 1/3, and ideal teat size and placement. This is a heifer with a pile of longevity, and she's only going to get better as she matures. ~Homo Polled ~ Homo Black~

103

CROSSROAD *Nantes* 178N

P1503521

CRF 178N

JAN 23 2025

POLLED FB

CE  
8.6  
BW  
3.1  
WW  
74.1  
YW  
105.0  
MILK  
33.8  
MCE  
6.3  
MWWT  
70.9

BW  
97  
SEP08  
WW  
783  
205 ADJ  
742  
365 ADJ



FAIRVIEW EVOLUTION 318H  
S: KEET'S LAUNCH 28L  
KEET'S FATIMA 20F

ANCHOR D MACS EGO 132B  
D: CROSSROAD KNOCKOUT 48K  
CROSSROAD HIGHLIGHT 100H

This is our first set of Launch calves, and this female is a prime example of how his females are built. Extremely angular, loose made, with great length of body and extension. Her grandam was a prominent producer, pumping out dark red calves with plenty of muscle and performance. We can't wait to see how this late January-born heifer looks come sale time! ~Hetero Polled ~ Diluter free~



104

CROSSROAD *Newcastle* 160N

1503501

CRF 160N

JAN 19 2025

HORNED FF

VIRGINIA MARQUEE 423D  
S: VIRGINIA MILLER 41K  
SIBELLE ROSEL 41C

SBV REPUTATION 707F  
D: CROSSROAD KARNIVAL 47K  
CROSSROAD FAIR LADY 203F



160N is a striking double-goggled, dark red female backed by a powerful and proven cow family. She traces to generations of maternal strength, with her dam being a maternal sister to Crossroad My Fairy Lady 24M, a standout female purchased by Maxwell Simmentals at our 2025 Border City Female Sale. This heifer combines eye appeal with real-world production value, ranking in the top 4% for milk, making her an excellent candidate to build a productive, high-performing cow herd. ~ Diluter Free~

CE  
4.7  
BW  
4.5  
WW  
68.3  
YW  
97.5  
MILK  
37.5  
MCE  
0.2  
MWWT  
71.7

BW  
93  
SEP08  
WW  
728  
205 ADJ  
683  
365 ADJ

105

CROSSROAD *Nottingham* 183N

P1503526

CRF 183N

JAN 24 2025

POLLED FF

STARWEST POL BATMAN  
S: BRSE FB POL BATMAN 45H  
DOUBLE BAR D FEATHER 49F

FAIRVIEW PHILOSOPHY 99E  
D: CROSSROAD J'MORA 93J  
CROSSROAD U'MORA 751U



These Batman females have really blown our socks off with a handful in production here now. Females with picture-perfect udders, consistent dark pigment, and a super square foot. 183N is going to be just that. Going back to the renowned U'Mora cow, who had eleven consecutive January-born natural calves here. All extremely well performing, and the bulls were exceptional. 183N is stout made, with lots of rib shape, and muscling throughout. She's going to be an extremely honest producer with a great line of fertility. ~Homo Polled ~ Diluter Free~

CE  
7.8  
BW  
2.7  
WW  
73.3  
YW  
95.1  
MILK  
31.3  
MCE  
5.5  
MWWT  
68.0

BW  
87  
SEP08  
WW  
758  
205 ADJ  
705  
365 ADJ



# SILVER LAKE JENNER 9J

PT1364623

MARC 9J

JAN 1 2021

POLLED FF

## Semen Lot

CE  
1.4  
BW  
6.5  
WW  
67.2  
YW  
88.0  
MILK  
33.1  
MCE  
1.3  
MWWT  
66.7

BW  
97  
WW  
933  
YW  
1465



### 106

## LOT 106A-E

SELLING 50 STRAWS  
(IN 10 STRAW PACKAGES)

SEMEN STORED AT  
BOVIGEN, MOOSE JAW, SK

SEMEN IS QUALIFIED  
FOR CANADA

SIBELLE SPARTACUS 8A  
S: SIBELLE POL DARWIN 21F  
SIBELLE POL MOLLY 7B

ANCHOR D HIGH NOON 247B  
D: MCM MISS FARRAH FF 10F  
BAR 5 BERTA DA ZURITA

A bull we feel has lived in the shadows for too long. Silver Lake Jenner is the POLLED full brother to Silver Lake Jackson, who recently resold for a whopping \$100,000 at the World Congress Sale. Brothers born to the prolific Farrah cow. She's a High Noon daughter that has caught the attention of many for her vast power, flawless udder, and production record. This past December, her second daughter ever to sell brought \$65,000 at the Border City Sale to Mark Land + Cattle & Maxwell Simmentals. Jenner's Darwin sire continues to produce high-valued progeny with ideal colour, robust body, and impeccable feet. Jenner himself exhibits ample length of spine, superb markings, a strong sound foot, and well-rounded muscling throughout. His production record has only improved this year, with two outstanding sons selling in our sale. Sons with ample body, tremendous colour, great hair, and excellent temperament. He's one that's thoroughly proven through his pedigree, phenotype, and progeny on the ground. ~ Diluter Free~



Dam: MCM Miss Farrah FF 10F



Maternal Sibling: Crossroad Mary Beth 185M  
(Sold to Mark Land and Cattle +  
Maxwell Simmentals for \$65,000)



Son: Lot 39 Crossroad Tulsa Time 87N



# CIRCLE G REGULATOR 70L

PG1448042

KAG 70L

JAN 23 2023

HOMO POLLED PB

*Semen Lot*



CE  
2.8

BW  
5.1

WW  
111.2

YW  
165.3

MILK  
23.3

MCE  
2.0

MWWT  
78.9

BW  
95

205 ADJ  
913

**107**

## LOT 107A-E

**SELLING 50 STRAWS  
(IN 10 STRAW PACKAGES)**

**SEMEN STORED AT  
BOVIGEN, MOOSE JAW, SK**

**SEMEN IS QUALIFIED  
FOR CANADA**

BJL LETHAL DOSE 53F  
S: PERKS POTENT 309H  
PERKS PERFECT STORM 9B

LFE RED RIDGE 809W  
D: KS MISS RED RIDGE E48  
KS ZAYLAA Z908

We are pleased to offer another semen package on the \$76,000 phenom "Regulator" from Circle G Simmentals. As his first crop of calves is on offer this year, we cannot stress the quality of this group more. Purchased for his exemplary profile, structural integrity, dark red colour, and an exciting pedigree backing this herd sire. Perks Potent has been successfully used in the Circle G Program along with LaBatte Simmentals, producing highly sought-after big-dollar progeny. The bottom side of this deep red herd sire's pedigree comes from a prolific producing cow in the Circle G program, who consistently produces top-end bulls in their annual sale. Regulators' EPD profile is nothing short of impressive, ranking in the top 1% in weaning and yearling weight. Between eight bulls on offer and one replacement female, we truly feel this is one of the strongest sets of bulls we have sold. We can't forget to mention the exceptional set of thirteen replacement females we have in the pen at home. Extremely broody, maternal, strong-structured, and proud made. These are the type of females that we can't wait to see enter production. Stop by to see them all anytime! ~Homo Polled~



Son: Lot 7, CRF 122N



Son: Lot 1, CRF 118N



Son: Lot 6, CRF 129N



Daughter: Lot 92, CRF 153N



# Thank You to Our 2025 Crossroad Farms 19th Annual Bull & Female Sale Buyers

Abraham Land+Cattle\*  
Aiken Farm and Ranch\*  
Austin Vollman\*  
Belle Plaine Colony Farming Co.\*  
Berry Creek Colony\*  
Bristow Ranching\*  
Calview Farms\*  
Canadian Sires\*  
Casey Helgoe  
Cattle Creek Crossing\*  
Chris Lozochuk  
Circle M Farms\*  
Clayton Farms\*  
Colborn Farms\*  
Craig Dumais\*  
Crooked Creek Farm\*  
Cypress Colony\*  
Dallas Bristow  
Dave Caswell\*  
Devin Bouffard\*  
Don Farnell\*  
Double Bar D Farms\*  
Ewelme Colony  
G Plus Farms Ltd.\*  
G&D Simmentals\*  
Gawazuk Farms  
Granum Colony\*  
Green Leaf Colony\*  
Hairy Hill Cattle Co.\*  
Hampton Simmetals  
Hanging H Ranch\*

Hardluck Farms\*  
Hoffus Stock Farms\*  
Horner Cattle Co.  
Jeff Sorenson  
Jerry Isaac\*  
Jeslin Brad  
Jet Stream Livestock  
Justin Olson  
K3 Ag\*  
Keith and Susan Badinski\*  
Keith Blight  
Kelly Hinson  
Kevin Bristow\*  
Langer Land and Cattle Inc.\*  
Laura Abraham  
Leewood Ranch\*  
Levi Bristow\*  
Lew Carlton  
Mark and Nicole Sayers  
Marty Lay\*  
Matthew Kent  
MC Ranch\*  
Medicine River Cattle Co.\*  
Millard Farms\*  
Moore Ranching\*  
Myron Mickelson  
Prins Bros  
Randy Geisler\*  
Renjay Farms\*  
Riverbend Farms\*  
Robert Svoboda\*

Rosebud Colony\*  
Royal View Farms\*  
RYN Cattle\*  
Scott Bretz  
Sean Peterson\*  
Siroski Simmentals\*  
Spring Lake Simmentals\*  
Starwest Farms  
Storle Farms\*  
Strate Lake Side Farms\*  
Stroh Farm\*  
Sybouts Lake Farms  
Tim Amendt\*  
W2 Farms\*  
Weal Cattle Co.\*  
Wilcox Simmentals  
Yellow Rose Cattle Company

**2025 Border City  
Female Buyers**  
Maxwell Simmentals  
Mark Land and Cattle  
McIntosh Livestock  
Bar CL Livestock & 2K Springs  
Porter Simmetals  
Yanko Simmentals

\*Repeat/Multiple buyer

## Thank You to our 2026 Sale Sponsors

Lake Country Co-op Agro Centre Shellbrook



Pioneer Seeds- Kevin Larsen



Master Feeds - Kurtis Reid





**Return Address:**

**Crossroad Farms  
Box 160  
Shell Lake, Sk  
S0J 2G0**

