

DECEMBER 13, 2025 / SASKATOON, SK

Red and Black Angus  
cattle of exceptional

*Quality*

*Touch of*  
**CLASS** 2025

# Touch of CLASS 2025

Saturday, December 13th, 1 PM, SLS, Saskatoon, SK

## SALE DAY PHONES

Shane Castle \_\_\_\_\_ 306.741.7485  
Mark Forysth \_\_\_\_\_ 306.784.7844  
Brennan Schachtel \_\_\_\_\_ 306.821.2504  
Chad Lorenz \_\_\_\_\_ 403.896.9585

## SALE STAFF

### Auctioneer

Kolton McIntosh \_\_\_\_\_ 204-280-0359

### Sale Staff

Bryon Wolters \_\_\_\_\_ 780.581.8396  
Harvey Welter \_\_\_\_\_ 306.227.8283

### Sale Headquarters:

Sandman Hotel Tel: 306-477-4844  
310 Circle Dr. West, Saskatoon, SK

### Insurance:

Insurance available Sale Day from Larry Toner

### Viewing the Sale Offering:

Cattle are available for viewing at SLS Friday afternoon  
Check [www.castlerockmarketing.com](http://www.castlerockmarketing.com) for videos

### Internet bidding available through DLMS

- To view this sale visit [www.dlms.ca](http://www.dlms.ca)
- Fill out the registration form located under registration and sign-up for your free user account and select a user-name and password.
- BIDDERS - To be approved as a bidder, login to [www.dlms.ca](http://www.dlms.ca) and click BUYER APPROVAL tab, select the sale you are interested in bidding at and click sign up.

For more information call a DLMS Rep:  
Mark Shologan 780-699-5082  
DLMS Purebred Team 780-991-3025



# Join Us!

SATURDAY, DECEMBER 13, 2025

Saskatoon, SK / Sale Time 1pm

### AJ ANGUS

Adrian & Kim Jungman  
Duck Lake, Sk  
306-221-6864

### J BAR DEE FARMS

Jay & Aaron Spence  
Outlook, SK  
306-867-7586

### AUTUMN DEW ANGUS

Larry & Heather Dew  
306-736-7972  
Logan & Meagan Dew  
306-736-7180  
Windthorst, Sk

### JJL LIVESTOCK

Jarret, Jenna  
Ava and Cade Loveridge  
Melville, Sk  
Jarret 306-730-7072  
Jenna 306-730-8478

### COCKBURN RED ANGUS

Ward & Brittany Cockburn  
Briercrest, Sk  
306-631-9490

### KENRAY RANCH

Sheldon, Ella and Oliver Kyle  
Ray Kyle  
Redvers, Sk  
306-452-7545

### DOUBLE F CATTLE CO

Kelly, Angie  
Garret & Jacob Feige  
Parkside, SK  
306-747-7498

### NESSET LAKE ANGUS

Ivan & Julie Demmans  
Lacey Brooks  
Meadow Lake, SK  
Ivan 306-236-8086  
Lacey 306-240-4509

### EASTONDALE ANGUS

Dale, Shelly and Erika Easton  
Wawota, Sk  
306-577-7456

### NORTHERN VIEW ANGUS

Troy & Amy Frick  
Duff, SK  
306-728-8911

### EYE HILL STOCK FARM

Brennan Schachtel  
Lloydminster, SK  
306-821-2504

### NU HORIZON ANGUS

Kieran, Deb & Kodie Doetzel  
Lipton, SK  
403-357-7648  
Kodie 306-331-0384

### FORSYTH RANCH

Mark Forsyth  
Herbert, Sk  
306.784.7844

### FRASER FARMS

Jeff, Nancy & Jack Fraser  
Tilston, MB  
204-522-5964

### ROYMAC ANGUS

Roy McDonald  
306-398-7758  
Jesse McDonald  
306-398-7363  
Kirk McDonald  
306-398-7469  
Cut Knife, Sk

### GT ANGUS

Nolan Glover  
Wawota, Sk  
306-575-6955

### TRIPLE L ANGUS

Randy & Kim Tetzlaff  
& Family  
Viscount, SK  
306-231-6969

### HAYNES ANGUS

Haynes Family  
Biggar, SK  
306-948-7622  
306-948-7621

### WARDS RED ANGUS

Clarke & Denise Ward  
Saskatoon, Sk  
306-220-6372

### HILOW ANGUS

Dan, Erin and Cassidy Howell  
Lumsden, Sk  
306.581.7606

### HOWE RED ANGUS

Howe Family  
Moose Jaw, SK  
306-631-8779

### WINGELLO CATTLE CO

Chase Bruynooghe  
Outlook, Sk  
306.860.9715

### HS ANGUS

Henry & Nicole Stewart  
Invermay, Sk  
306-269-0201

### WRIGHT CATTLE CO

Jimmy & Kirsten Wright  
Meadow Lake, Sk  
306-304-7711

CASTLEROCK MARKETING  
Box 415, Swift Current, Sask, S9H 3V8  
Email: [castlerock.mktg@sasktel.net](mailto:castlerock.mktg@sasktel.net)  
[www.castlerockmarketing.com](http://www.castlerockmarketing.com)

Shane & Tammy Castle 306-741-7485  
Mark Forsyth 306-784-7844  
Brennan Schachtel 306-821-2504  
Chad Lorenz 403-896-9585



# Welcome

Welcome to the 17th TOC sale and yet again the consignors have ramped up the quality to another level! With the cattle market at an all time high the demand for cattle to take your program to the next level is more evident than ever! Inventory is your ally these days and the time for adding that next genetic piece is always ..... today! As you browse the catalog you will see that our selection criteria through the summer is sourcing from cow families with track records behind them. The backbone of the industry always has and always will be about having the best cows you can grace the pastures, it's what the Angus breed was founded on. The need for commercial relevance will always be there and working with a great set of breeders like we have in the TOC we share this like minded approach.

From the live portion of the sale offering right through to the frozen genetics the continuity of genetics which have delivered time and time again and yet not readily available make these a cherished opportunity! Foundation genetics that have shaped the TOC sale to gain respect from breeders across the country.

Join us in Saskatoon for great Angus fellowship on Friday evening and enjoy the rewards which has come from your perseverance over the years. Any questions regarding the offering be sure to reach out to the consignors our any of us at Castlerock Marketing we are here to represent the cattle as they are! Watch for updated videos on the sale cattle right up to sale time at [castlerockmarketing.com](http://castlerockmarketing.com)

See you sale day!

*Shane Castle*





It's been a long time since we brought a heifer calf to TOC. It was only fitting we offer the very best out of our cherished 314A cow. 94N is a spitting image of her dam and is patterned up like 314A as any of her flush sisters. Her flush brothers are equally impressive and will be ones to watch for in Golden Sunset's bull sale. Slowburn needs no introduction as he's been as influential of a bull in the Red Angus breed as any for a long time. Her dam 314A has created her own story as been very influential in our herd with numerous daughters/granddaughters in our herd as well as has sold sons to respected breeder's McAleer Ranching (23J) and Kenray Ranch (18K).



*Dam*

**1**

## RED EYE HILL MISSEY 94N

Heifer Calf | Reg# 2408579 | January 24 2025 | PBS 94N

<i>Sire</i>	RED U2 DOMINION	RED HOWE HESSTON 212C
	<b>RED LWNBRG SLOWBURN 102H</b>	RED U2 HIDE HO 459D
	RED U2 FAVORITE 275F	RED U-2 RENOWN 193C
		RED KBJ FAVORITE 931B
<i>Dam</i>	RED RMJ REDMAN 1T	RED 5L NORSEMAN KING 2291
	<b>RED SPITTALBURN MISSEY 314A</b>	CROWFOOT KURUBA 4033P
	RED SPITTALBURN MISSEY 824U	RED SIX MILE FULL HOUSE 572R
		RED SPITTALBURN MS TOPPER 605S

EPD	BW	WW	YW	Milk	Perf	BW	Adj WW
2.6	49	89	24				

*Consigned By: Eye Hill Stock Farm*

**2**

## RED KENRAY REBA 55N

Heifer Calf | Reg# 2443944 | February 27 2025 | KER 55N

<i>Sire</i>	RED RREDS SENECA 731C	RED BIEBER ROLLIN DEEP Y118
	<b>RED EYE HILL SENECA 18K</b>	RED RREDS ASTER 309A
	RED SPITTALBURN MISSEY 314A	RED RMJ REDMAN 1T
		RED SPITTALBURN MISSEY 824U
<i>Dam</i>	RED HOWE BOSS 313F	RED FLYING K BOSS 95C
	<b>RED KENRAY REBA 44J</b>	HOWE MS PROSPECTOR 36C
	RED SUNSET RIDGE REBA 3Y	RED HG GRIDMAKER 806
		RED JCC REBELLO 122R

EPD	BW	WW	YW	Milk	Perf	BW	Adj WW
1.5	46	80	26			88	

*Consigned By: Kenray Ranch*



Reba has been gaining popularity and fans her entire lifetime, the country music star is much the same. This stunning red head has a presence about her that projects an aura of self confidence and importance. You can't help but admire the impeccable design to her body and true Red Angus character. She is thick made and will most certainly develop into a female that will raise them scale crushing bull calves in her future. Her pedigree reads as a maternal who's who in the industry stacking Redman and Boss together. Her sire Seneca 18K is a breeding machine and has done an outstanding job within our program the last few years. It really isn't a surprise considering he is backed by the amazing donor quality cow Missey 314A. She continues to write her own history in the Red Angus history books with her ability to be mated multiple different directions and consistently produce the good ones. Heifer calves like this are not easy to let go, take the reins come sale day.





A highlight heifer which we were very reluctant to offer but are committed to selling the best at the TOC! The Red Girl cow family is one we think highly of as they arrived from Geis's in 2006 as a package of heifer calves to start our red program. We showed this pair at Lloydminster Stockade and will have at Agribition as well. If you like some frame and power then this heifer becomes part of the conversation in adding a breeding piece. Sired by the highly maternal MacGregor bull which was campaigned successfully over the years.



Dam

3

### RED TRIPLE L RED GIRL 6N

Heifer Calf | Reg# 2443363 | January 29 2025 | RKT 6N

Sire

RED SSS CONTENDER 121B  
**RED TOWAW MCGREGOR 601J**  
RED TOWAW COPPER 27W

Dam

RED SIX MILE & CO JAGGER 780A  
**RED TRIPLE L RED GIRL 16G**  
RED GEIS RED GIRL 184'06

RED SSS SOLUTION 329Z  
RED SSS DYNA 688X  
RED TOWAW INDEED 104H  
RED ANGEL COPPER 5R  
RED VGW GAME PLAN 816  
RED SIX MILE CHETA 702W  
RED GEIS ZAMA PINE 51'03  
RED EAGLE ACRES RED GIRL 102F

	BW	WW	YW	Milk
EPD	2.9	56	88	26

	BW	Adj WW
Perf	84	685

Consigned By: Triple L Angus

4

### J BAR DEE BARBIE 4N

Heifer Calf | Reg# ?408712 | January 14 2025 | JSS 4N

Sire

RED U2 DOMINION  
**RED LWNBRG SLOWBURN 102H**  
RED U2 FAVORITE 275F

Dam

LFE BA LEWIS 3008B  
**RED WHEEL GINGER BARBIE 1E**  
BLACK WHEEL BARBIE 84C

RED HOWE HESSTON 212C  
RED U2 HIDEA HO 459D  
RED U-2 RENOWN 193C  
RED KBJ FAVORITE 931B  
JL KELLY 2232  
LFE BA JESTRESS 2007W  
RED SIX MILE FAST LANE 525A  
BARBARA OF PEAK DOT 541R

	BW	WW	YW	Milk
EPD	2.1	55	90	23

	BW	Adj WW
Perf	74	

Consigned By: JBar Dee Farms



An ET heifer calf out of the decorated show cow we purchased an interest in with Triple L from Wheelers! A prolific donor cow, Ginger Barbie mated to Slowburn was an easy choice decision to flush to. Matching the power, performance and fantastic feet with Ginger Barbie's production record and outcross pedigree. This mating has turned out exactly how we had hoped, 4N is a power house of a heifer with a look to be as good or her dam or better which makes for big shoes to fill. The Slowburn sons set the bar high over the last few bull sale seasons and now his daughters are starting to prove their worth as well!



Dam





The Freyja cowline is an original here. The first line I bought from Red Round up in 1982. The attractive phenotype structural soundness and longevity is bred into the entire cow family. 13N is deep, soft made and very functional. She comes off a Dark red tank of a mother that has a solid foot and moves feely. The Copper1005 Daughters are eye appealing and extremely functional. His Cora Dam might have something to do with that! 13N will make an excellent female.



Sire

5

## RED WARD'S FREYJA 13N

Heifer Calf | Reg# 2442579 | January 23 2025 | DRAW 13N

Sire

RED REDS COPPER G929  
**RED COCKBURN COPPER 1005**  
RED COCKBURN CORA 9007

Dam

RED LWNBRG FUSION 69D  
**RED WARD'S FREYJA 61G**  
RED WARD'S FREYJA 141Y

RED REDS SENeca 731C  
RED REDS LANA 306A  
RED CSF RED ZONE 1C  
COCKBURN CORA 767E  
RED ANDRAS FUSION R236  
RED LWNBRG PEACEMAKER 70B  
RED HOWE BOLD FUTURE 86T  
RED WARD'S FREYJA 24M

EPD	BW	WW	YW	Milk
1.5	42	76	27	

Perf	BW	Adj WW
84	605	

Consigned By: Wards Red Angus

6

## RED FRASER COUNTESS 592N

Heifer Calf | Reg# 2440176 | February 13 2025 | JFRA 592N

Sire

RED WHEEL STARK 67G  
**RED KENRAY STAMP 3L**  
RED WHEEL GINGER BARBIE 1E

Dam

RED COCKBURN ASSASSIN 624D  
**RED FRASER COUNTESS 69H**  
RED FRASER COUNTESS 6101D

BLACK WHEEL DRACARYS 178E  
RED WHEEL ROSE 66C  
LFE BA LEWIS 3008B  
BLACK WHEEL BARBIE 84C  
RED PIE SPECIALIST 430  
RED COCKBURN CORA 254Z  
RED BRYLOR ROUGHRIDER 214Y  
RED FRASER COUNTESS 637S

EPD	BW	WW	YW	Milk
2.2	58	92	33	

Perf	BW	Adj WW
84		

Consigned By: Fraser Farms

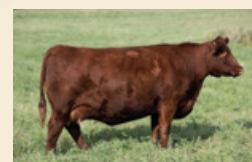


Shane always manages to find the good ones. This is the first offering from our new herd sire purchased from Kenray, Stamp 3L. He demanded quite a bit of attention in the Kenray sale where he ended up as their high seller that day. He is sired by Stark out of Wheelers Ginger Barbie cow that has been so popular. Sheldon showed his full brother and had great success... Wheelers have done a great job marketing his full siblings to other breeders across the land. The Countess cow family has been stellar for us over the years back to when we purchased 18M from Topline Red Angus in 2003. This is a female backed with some great cow families on her paper. Sure fire to make a great cow in the future.





Like mother, like daughter. She is bold ribbed, soft made and extremely correct in her structure, foot and heel. Her udder placement is exceptional, as to be expected coming from her sire, Red Brylor High Capacity and Flying K Max 110C bottom side. The Miss Deal cow family is our largest for a reason. They are consistent, predictable, fertile, easy keeping, hardworking females. Breed her any way you like, this female will do the work for you. She has the absolute perfect temperament to be a show female for a junior, she is soft and gentle natured and extremely easy to handle.



*Dam*

**7**

## RED JJL MISS DEAL 509N

Heifer Calf | Reg# 2416045 | January 04 2025 | JJL 509N

*Sire*

RED BJR HIGH CAPACITY 008  
**RED BRYLOR RSTD HIGH CAPACITY**  
RED BRYLOR BONITA 36J

*Dam*

RED FLYING K MAX 110C  
**RED JJL MISS DEAL 41F**  
RED JJL MISS DEAL 128D

RED BJR HI HO 916  
RED JRA JAMES 904  
RED LEACHMAN EBV 3531  
RED BRYLOR CHEROK 40X  
RED ML MAX 862U  
RED FLYING K ANITA 782T  
RED WHEEL JACK 80A  
RED JJL MISS DEAL 65Z

	BW	WW	YW	Milk
EPD	-1.9	37	73	26

	BW	Adj WW
Perf	78	661

*Consigned By: JJL Livestock*

**8**

## RED COCKBURN CORA 5057

Heifer Calf | Reg# 2426450 | February 02 2025 | CWJ 57N

*Sire*

RED ALLISON ELYSIUM 80J  
**RED ALLISON ABYSS 58L**  
ALLISON LOTTIE 33G

*Dam*

RED SSS BREAK OUT 114Y  
**RED COCKBURN CORA 326A**  
RED COCKBURN CORA 137Y

BLACK WHEEL DRACARYS 86G  
RED ALLISON BESS 61E  
EF COLOSSAL 520  
RED BAR-E-L LOTTIE 32B  
RED PIE GAME ON 9109  
RED SSS DUCHESS 23R  
RED BAR-E-L RIBEYE 103R  
RED WILBAR CORA 443P

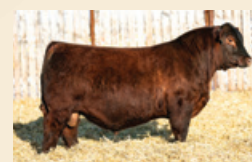
	BW	WW	YW	Milk
EPD	2.6	66	116	24

	BW	Adj WW
Perf	82	

*Consigned By: Cockburn Red Angus*



Cora 5057 is long spined, attractive and a brood cow in the making. She's one you don't want to miss out on if consistency and productivity is high on your priority list. Her dam 326A has exemplified this with 5 high quality sons selling to purebred herds. 5057 is the first daughter to sell from our Abyss bull, his first calf crop is nothing short of impressive.



*Sire*





523 is a big-bodied female with added growth, performance, and maternal value. 523's dam was the result of a pick of the herd from Eric and Louise Falk; she is one that is phenotypically outstanding! 523 has the numbers, phenotype, and cow family to be an asset in any breeding program.

## 9 RED WRIGHTS J137 LASSIE 523N

Heifer Calf | Reg# 2434956 | February 02 2025 | WRA 523N

*Sire*

RED BIEBER CL ENERGIZE F121  
**RED BIEBER JUMPSTART J137**  
RED BIEBER GALLEE 390G

*Dam*

RED U-2 AUTHENTIC 139A  
**RED ELF 139 LASSIE 24H**  
RED ELF 100 LASSIE 701E

RED BIEBER CL ATOMIC C218  
RED BIEBER CL ADELLE 575D  
RED GMRA TRINITY 5222  
RED BIEBER GALLEE 550D  
RED MINBURN COPENHAGEN 3Y  
RED U-2 STORMY 7202T  
RED VIKSE GAME ON 100C  
RED ELF30 LASSIE 404B

EPD	BW	WW	YW	Milk
1	63	105	22	

Perf	BW	Adj WW
77		

Consigned By: Wright Cattle Co

## 10 WINGELLO MISS GRAVITY 501N

Heifer Calf | Reg# 2429828 | January 11 2025 | CCJB 501N

*Sire*

RED FLYING K BOSS 95C  
**RED HOWE BOSS 79J**  
RED HOWE MS MAT 126E

*Dam*

RED SIX MILE ELEMENT 10E  
**BLAKE'S MISS GRAVITY 66J**  
BLAKE'S MISS GRAVITY 7F

RED FLYING K MAX 153Y  
RED FLYING K MS. DIADEM 100X  
RED JENSEN TUS SKY 25S  
RED HOWE MS MAT 216N  
RED SIX MILE SIGNATURE 295B  
RED U6 ALANA 13X  
RED HOWE TEMPT 24B  
BLAKE'S MS GRAVITY 43D

EPD	BW	WW	YW	Milk
-1.5	42	70	26	

Perf	BW	Adj WW
72		566

Consigned By: Wingello Cattle Co



Miss Gravity 501N is a powerfully constructed, eye appealing red carrier female with all the right pieces. Her dam, Blake's Miss Gravity 66J, was purchased out of the Blake's female sale last fall and has knocked it out of the park with her first calf here at Wingello. This female is moderate framed, wide based and level hipped. 501N exhibits a quiet, docile temperament that would make a competitive junior show project, while also carrying the structural and maternal traits to excel in production. The opportunities are endless with this one.



Sire





This will be the first progeny offered in Canada out of the Black Mass bull out of Montana. He is a ten year-old bull still breeding for the Lunds B Bar Ranch in Montana. Both our bred females carry his service as well. Great maternal bred bull with longevity, great udder qualities and superior foot structure. We selected this female's sire out of the Lunds 2024 spring bull sale. Her dam is an own granddaughter of the great GDAR Forever Lady 9136 cow who herself has 66 progeny registered in the Canadian herdbook. Get a preview look at this very nice female at Brandon Ag Ex and Canadian Western Agribition.

Both of our bred heifer consignments are carrying service to B Bar Black Mass 3045



Grandsire



Granddam

11

## 11 EASTONDALE FOREVER LADY 32'25

Heifer Calf | Reg# 2436340 | February 06 2025 | VK 32N

Sire

B BAR BLACK MASS 3045  
B BAR BLACK MASS 8973  
B BAR QUEEN 897

B BAR WINDY 79  
B BAR QUEEN 304  
B BAR CHURCHILL 0876  
B BAR QUEEN 67

Dam

SCHIEFELBEIN ATTRACTIVE 4565  
EASTONDALE FOREVER LADY 76'22  
EASTONDALE FOREVER LADY 22'11

JMB TRACTION 292  
FROSTY ANSWER 3979  
HF TIGER 5T  
GDAR FOREVER LADY 9136

EPD	BW	WW	YW	Milk	Perf	BW	Adj WW
	1.6	65	114	31		82	744

Consigned By: Eastondale Angus

12

## WARD'S ATALANTA 22N

Heifer Calf | Reg# 2442580 | January 20 2025 | DRAW 22N

Sire

HOFFMAN STAGECOACH 1908  
STELLFLUG HOFFMAN RISEABOVE  
HOFFMAN 3210 RITA LADY 026

TEHAMA TAHOE B767  
BSG COUNTESS 1705 OF 028  
BAR R JET BLACK 5063  
HA RITO LADY 3839

Dam

DURALTA 166D CAPONE 198F  
WARD'S OW ATALANTA 17H  
WARD'S ATALANTA 32C

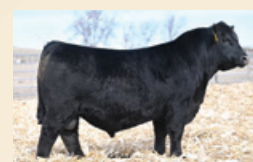
DURALTA 1441Y REVENUE 166D  
LLB ENCHANT TROJAN ERICA 128D  
DURALTA UP SWITCH 13A  
WARD'S PR ATALANTA 7A

EPD	BW	WW	YW	Milk	Perf	BW	Adj WW
	1	73	119	19		78	658

Consigned By: Wards Red Angus



The Atalanta cow family needs no intro. 22N is no exception to this line, deep, broody with excellent feet and legs. She is off of an awesome young cow, 17H is as ideal as they come with added dimension. Rise Above has been very well accepted by breeders across Canada and the U.S. Known to combine moderate birthweights with exceptional growth. Don't miss out on this fresh genetic package.



Sire

12





The show biz females were well received in last years TOC sale, so we decided to go back to the well once again. We calved out our first group of Show Biz females last winter and they were nothing short of excellent. They are maturing into big bodied cows with really good teat placement and then went on to prove themselves over the summer raising heavy calves. 15N fits the mold of our best show biz females, she is powerful, feminine and structurally correct. Her 7 year old Renown mother is a moderate, easy doing cow who has proven herself year In year out. We are fully expecting the Show Biz females to be the backbone of our cowherd for years to come and we are excited for another breeder to be able to add these genetics to their herd.



Sire

13

### ROY MAC PRIDISTA 15N

Heifer Calf | Reg# 2410843 | January 11 2025 | JLM 15N

Sire

SCHIEFELBEIN SHOWMAN 338  
HF SHOW BIZ 226J  
HF TIBBIE 73D

Dam

S A V RENOWN 3439  
ROY PRIDISTA 20F  
ROY PRIDISTA 15A

SCHIEFELBEIN ATTRACTIVE 4565  
FROSTY ELBA 3745  
HF DEFENDER 146B  
HF TIBBIE 263Y  
RITO 707 OF IDEAL 3407 7075  
S A V BLACKCAP MAY 4136  
CURRIE F250 21X  
LAZY CREEK PRIDISTA 15U

EPD	BW	WW	YW	Milk	Perf	BW	Adj WW
2.3	70	126	29		84		

Consigned By: Roymac Angus

14

### HAYNES SOCIALITE 11N

Heifer Calf | Reg# 2410655 | January 24 2025 | KH 11N

Sire

COLEMAN ROCK 7200  
COLEMAN PLATINUM 2622  
COLEMAN CHLOE 9275

Dam

COLEMAN KNIGHT 209  
MERIT SOCIALITE 9093G  
MERIT SOCIALITE 1223

O C C JUNEAU 807J  
COLEMAN DONNA 714  
COLEMAN BRAVO 6313  
LAWSON'S CHLOE C815  
R R RITO 707  
COLEMAN DONNA 714  
EASTONDALE WINDY 43'05  
MERIT SOCIALITE 6086

EPD	BW	WW	YW	Milk	Perf	BW	Adj WW
5.1	59	99	17		93		581

Consigned By: Haynes Angus



This heifer is one I've been excited about since the day she was born. She's full bodied, carrying a large amount of rib shape into a strong hip, while maintaining a nice feminine front and wedge shape. She comes from a big middled, sound Socialite cow I purchased from Merit that has been a big time producer from her first calf. She is sired by the popular Coleman Platinum bull that adds performance while keeping mature size and caving ease in check. This heifer is built to produce those heavyweight calves and last a long time doing it. A maternal sister sold through this same sale to the Doig Family.

14





15

Big ribbed, wide topped with the style for the show ring. Probably shouldn't be letting this one go. Out of one of our top producing Intuition daughter here. Her dam's first calf was our high selling bull a few years back and her son in the sale pen will be a top end bull this year as well. This female is from our herd sire Renovation that come via the Masterpiece sale as the pic of the Minburn bull calves. We fell in love with his dam as she is truly one of the very nice cows in the breed! High expectations for this heifer calf as she contains a lot of very good cows up close in her pedigree!

15

### LOCK 41K ANNIE 561N

Heifer Calf | Reg# 2446351 | March 11 2025 | JOLO 561N

Sire

MINBURN RENOVATION 25H  
MINBURN RENOVATION 41K  
MINBURN DUCHESS 191E

Dam

MINBURN INTUITION 23D  
LOCK 23D ANNIE 321H  
JOLO SOOKI 82Y

S A V RENOVATION 6822  
MINBURN BLACKBIRD 76C  
MINBURN REBEL 134C  
MINBURN DUCHESS 64B  
TRIPLE H INTUITION 14B  
TRIPLE H QUEEN 25B  
DFCC 32T FUTURE BREAKER 69W  
EGGEN FAME 15M MISS 166R

BW WW YW Milk

EPD

BW WW

Perf

88

Adj WW

Consigned By: Lock Livestock

16

### AJA ANNIE 546N

Heifer Calf | Reg# 2419378 | January 17 2025 | AJA 546N

Sire

BASIN PAYWEIGHT 1682  
DEER VALLEY GROWTH FUND  
DEER VALLEY RITA 36113

Dam

S A V RENOWN 3439  
AJA ANNIE 180J  
AJA ANNIE 82Y

BASIN PAYWEIGHT 006S  
21AR O LASS 7017  
PLATTEMERE WEIGH UP K360  
DEER VALLEY RITA 9457  
RITO 707 OF IDEAL 3407 7075  
S A V BLACKCAP MAY 4136  
JNJ REM ROUNDUP 01U  
DOUBLE AA ANNIE K 286'05

BW WW YW Milk

EPD

0.5

64

111

22

BW WW

Perf

70

Adj WW

Consigned By: AJ Angus



16

Growth fund did it again! This female is no exception. 546N is stout wide topped, bold ribbed with adequate center of body while maintaining a well-balanced outline. 546N is a granddaughter to our donor cow AJA Annie 82Y. This cow family continues to produce high quality females that go out to be the queen of the pasture.





22N marks the first sale appearance from the junior division of HS Angus. This super sweet and gentle heifer came in dam from Jaymarandy. She is a heifer that you will appreciate more the longer you look at her. Very correct from every angle with tons of hair and the momma cow look. This should come a s no surprise with a pedigree that includes: Triumph, Coalition, Density, Pioneer and Tiger King. This heifer would make an awesome junior project and wouldn't be going anywhere if Paisley was old enough for 4-H.



Sire

17

### HSA P PRIDE 22N

Heifer Calf | Reg# 2443622 | January 26 2025 | HSP 22N

Sire

COLEMAN BRAVO 6313  
**COLEMAN TRIUMPH 9145**  
LAWSON'S CHLOE C815

Dam

DAINES HIGH COUNTRY 56H  
**JAYMARANDY MISS PRIDE 332L**  
DAINES MISS PRIDE 80B

COLEMAN CHARLO 0256  
COLEMAN DONNA 714  
S A V RENOWN 3439  
LAWSON'S CHLOE Z341  
U2 AFFILIATE 191E  
DAINES ELLEN ERICA 1A  
RING CREEK TIGER KING 20W  
DAINES MISS PRIDE 52X

EPD	BW	WW	YW	Milk
2.6	58	106	24	

Perf	BW	Adj WW
82	588	

Consigned By: HS Angus

18

### HSA MICHELLE 3N

Heifer Calf | Reg# 2445895 | January 06 2025 | HS 3N

Sire

SIX MILE DROPTINE 811G  
**VALLEY BLOSSOM DROPTINE 767K**  
VALLEY BLOSSOM LASS 13Y

Dam

ISLA BANK BISMARCK 1302  
**HSA MICHELLE 9E**  
DANNA FREEDOM 5Z

REMITALL F DIESEL 76D  
EXAR BLACKBIRD 1916  
HOLMAN COOL COUNTRY 845  
JOINT CREEK 3R LAD 723T  
S A V BISMARCK 5682  
HF EVENING TINGE 138W  
NETHERLEA FREEDOM 12R  
DANNA 7X

EPD	BW	WW	YW	Milk
-2.5	36	67	24	

Perf	BW	Adj WW
55		

Consigned By: HS Angus



The dam of this heifer may just be my favorite cow to have walked the pastures at HS Angus. A smaller framed, easy keeping cow that was structurally correct good uddered, kept birth weights down, put a calf in the keeper pen every time and has been trouble free through her career. Droptine 767K should add some power and stack more maternal predictability with his dam being one of the most prolific and sought after cows in the history of the Valley Blossom program. 3N has a presence that would stand the most competitive show rings in the country and the structure to be a mainstay in your pastures for the next decade plus.





19

A sweet, parentage verified, daughter of HF Prostar 97L. We were able to secure semen packages on this bull for the last two years and are we ever happy with the results. We loved Prostar in the flesh as both a calf and a yearling bull and he has done a fantastic job siring a very good set of calves here.

This sweet heifer calf's dam is a beautiful Endurance daughter with a very nice udder. Her first daughter sold in our Part of the Program production sale last December to Dane Hogg of Estevan. Not a whole lot of chances to get in on the ground floor with a Prostar daughter, don't miss this chance.



Sire

## 19 EASTONDALE BLACKBIRD 108'25

Heifer Calf | Reg# 2436347 | February 25 2025 | VK 108N

Sire

SITZ PROFOUND 680G  
HF PROSTAR 97L  
HF ROSEBUD 154F

Dam

LORENZ ENDURANCE 4F  
EASTONDALE BLACKBIRD 27'22  
EASTONDALE BLACKBIRD 113'16

SITZ STELLAR 726D  
SITZ EPPONIA 223C  
HF UNIT 14C  
HF ROSEBUD 91D  
EASTONDALE ENDURANCE 82'15  
LORENZ ANNIE 43D  
SANKEYS LARAMIE 114  
BEVERLY HILLS BLACKBIRD 401

	BW	WW	YW	Milk		BW	Adj WW
EPD	1.7	48	96	26	Perf	80	684

Consigned By: Eastondale Angus

20

## FRL ESTHER 524N

Heifer Calf | Reg# 2410610 | February 11 2025 | FRL 524N

Sire

DL RAINMAKER 1879  
BORDER BUTTE PLAYER 284K  
BORDER BUTTE ATLANTA 95B

Dam

EASTONDALE LARAMIE 36'16  
FRL ESTHER 911G  
AW ESTHER 11C

HILLTOP RAINMAKER 6274  
DL RUBY 496  
BORDER BUTTE GRID TOPPER 53U  
BORDER BUTTE ATLANTA 110Y  
SANKEYS LARAMIE 114  
EASTONDALE RUBY 05'11  
VIN-MAR O'REILLY FACTOR  
AW ESTHER 23A

	BW	WW	YW	Milk		BW	Adj WW
EPD	1.5	66	117	25	Perf	72	625

Consigned By: Forsyth Ranch



20

This is a heifer calf we have so much confidence in. It's a cow family that came our way via the AW Dispersal. Her grandam 11C was one of the most beautiful uddered cows to walk our ranch. She was sold in or reduction sale in 2019 to Wiwa Creek Angus. She was a definite front runner that day. Her dam Esther 911 is carrying on that legacy. This being her third daughter raised here and we have retained the other two. Both in which exemplify the same productivity and attributes both 911 and 11C did. As for her sire Border Butte Player. He has left us an extremely great set of calves this years set is worth the stop to see. As he has stamped them with his presence, volume, mass, and great foot quality.



Dam



Sire





41M is a big, powerful, blood red female with a beautiful chisel front end. She has a massive amount of rib and is dropping down a beautiful udder. What makes her so special is when you bring her pedigree up she is exactly what we have been striving to create. She is double bred on the top and bottom side with our Envious cow family. That is what we've been working so hard to do is create genetics that excel in our cow herd and stack those genetics on the top and bottom side of our pedigrees. A direct daughter of the 282Y cow recently topped the Masterpiece Sale in October at \$23,000 to Triple L.

Exposed to Red Flying K Dominator 37L April 27th-July 3rd. Due early / mid February.



Great Granddam

## 21 RED HOWE MS ENVIOUS 41M

Bred Heifer | Reg# 2379966 | February 10 2024 | MHZ 41M

Sire	RED LWNBRG SLOWBURN 102H	RED U2 DOMINION
	RED HOWE PRAIRIE FIRE 64K	RED U2 FAVORITE 275F
Dam	RED HOWE MS ENVIOUS 135F	RED PEAK DOT ELIMINATOR 596C
	RED U2 HEAD GAMES 330E	RED HOWE MS ENVIOUS 282Y
Dam	RED HOWE MS ENVIOUS 126H	RED U-2 FOREIGNER 413B
	RED HOWE MS ENVIOUS 148F	RED U-2 MS ROBO 383C
		RED PEAK DOT ELIMINATOR 596C
		RED HOWE MS ENVIOUS 282Y

EPD	BW	WW	YW	Milk	Perf	BW	Adj WW
	2	46	76	23		80	616

Consigned By: Howe Family

## 22 RED HOWE MISS ANNIE 87M

Bred Heifer | Reg# 2378533 | February 21 2024 | MHZ 87M

Sire	RED DVO RIGHT OF FIRST REFUSAL	RED BAR-E-L FIRST DOWN 161D
	RED SRJJ FIRST FUEL 2041	RED DVO PRINCENE
Dam	RED SRJJ LANCER C62	RED CRUMP RUNAWAY 3178
	RED FLYING K BOSS 95C	RED SRJJ SKY LANCER W269
Dam	RED HOWE MISS ANNIE 233F	RED FLYING K MAX 153Y
	RED HOWE MISS ANNIE 17S	RED FLYING K MS. DIADEM 100X
		RED BAR-E-L APPROVAL 4L
		RED HOWE MISS ANNIE 150L

EPD	BW	WW	YW	Milk	Perf	BW	Adj WW
	2.6	39	70	23		78	567

Consigned By: Howe Family



87M is a massive soggy big bellied heifer dropping a tremendous udder. I don't know if you could make this heifer any soggier. This heifer comes from the Annie cow family which came from one of the great mentors to me Doug Henderson about 25 years ago. He bought Krista a heifer which turned into a cow family of 15 which I bought all of them. When I bought a pack-age in Sting I picked my top ten cows to breed to him and this heifers grandmother was one of them. We then chose her bull calf to use in our program to add outcross genetics. She comes with service to the high selling Moonpie son that Triple L bought this spring at Rohrich Cutting Edge Ranch, Steele ND and we were fortunate enough to secure a semen package in the bull.

AI May 5th to CER Moon Pie 4010. Exposed to Red Flying K Dominator 37L May 13th- July 3rd. Favorable to AI.



Service Sire





A really eye appealing female with a big hip, rib shape, and length of body but doesn't give up femininity and style. 92M 's sire LANDMARK has made a tremendous impact on our herd but unfortunately we lost him last year. RED DFCC 10K MOLLIE 92M will be the only LANDMARK fe-male we will offer for sale. The dam, RED U2 GOLD EDGE 163E, is a top producing U2 cow that is structurally sound with great udder quality.

Exposed April 4th- June 19th to Red Cockburn Trust Fund 4043, calving ease combined with power and performance. Due late February.



Sire

23

## RED DFCC 10K MOLLIE 92M

Bred Heifer | Reg# 2369321 | February 17 2024 | DFCC 92M

Sire

RED MAR LINCOLN 106H  
RED MAR DM LANDMARK 10K  
RED MAR LADYTROOPER 114Z

Dam

RED TR ROLLS ROYCE 44B  
RED U2 GOLD EDGE 163E  
RED U-2 GOLD EDGE 283B

RED BLAIR'S NAVIGATOR 37E  
MAR SIERA 12B  
RED COCKBURN RIBEYE 346U  
RED SUNSET RIDGE TROOPER 10T  
RED BIEBER ROLLIN DEEP Y118  
RED TR DOLL TARA 340S  
RED U2 MISSION 61W  
RED U-2 GOLD EDGE 8177U

	BW	WW	YW	Milk
EPD	2.7	51	92	27

	BW	Adj WW
Perf	82	

Consigned By: Double F Cattle Co

24

## RED COCKBURN CORA 4020

Bred Heifer | Reg# 2447909 | January 28 2024 | CWJ 20M

Sire

RED SSS GLENFIDDICH 741G  
RED WILBAR GLENFIDDICH 92K  
RED WILBAR DORITA 621H

Dam

RED LWNBRG SLOWBURN 102H  
RED COCKBURN CORA 2018  
RED COCKBURN CORA 737E

RED SSS GRAVITY 296E  
RED SSS DUCHESS 416C  
RED WILBAR CRACKERJACK 73F  
RED WILBAR DORITA 63F  
RED U2 DOMINION  
RED U2 FAVORITE 275F  
RED PIE THE COWBOY KIND 343  
RED COCKBURN CORA 330A

	BW	WW	YW	Milk
EPD	0.7	41	75	25

	BW	Adj WW
Perf	80	

Consigned By: Cockburn Red Angus



Cora 4020 is one sure to catch your attention. She is bold sprung, yet elegant in her design and is laying down a beautiful udder. Her dam is a young Slow Burn daughter and she can get it done, weaning a top heifer again this year. 4020 is safe in calf early carrying the exciting and exclusive service to the \$97,500 Red Allison Prestige bull.

AI April 29 Red Allison Prestige 114M. Exposed May 5 - June 15 to Red Count Ridge Undercover 37L. Preg Checked safe to AI service.



Service Sire





One might notice when touring our herd that it is quite maternally focused. This female would emphasize that focus. She carries many great females and female makers on her paper and is bound to draw your attention. Towaw Indeed, Resource and Packer for notable sires, Fayette, Cora and Annie for cow families that have drawn some attention. There is plenty more great ones on her paper if you look deeper. An interesting piece of the puzzle is the service to the high selling bull from the Howe Red Angus program this past spring.

Exposed to Red Howe Milo 58M  
April 24th to August 15.

25

## RED FRASER ANNIE 4120M

Bred Heifer | Reg# 2425743 | March 08 2024 | JFRA 120M

Sire

RED TOWAW INDEED 104H  
**RED FRASER INDEED 52H**  
RED BRYLOR FAYETTE 40Y

Dam

MRLA RESOURCE 23F  
**FRASER ANNIE 119J**  
RED FRASER ANNIE 837F

RED CC EXPANSION 5E  
RED TOWAW MOLLY 67C  
RED BRYLOR SDL PASQUALE 213P  
RED FL FAYETTE 33M  
S A V RESOURCE 1441  
RED MRLA MISS 345X  
RED WILBAR PACKER 383B  
RED FRASER ANNIE 518C

EPD	BW	WW	YW	Milk	Perf	BW	Adj WW
4.4	48	80	25		100		

Consigned By: Fraser Farms

26

## RED FRASER CHARITY 4107M

Bred Heifer | Reg# 2425738 | March 01 2024 | JFRA 107M

Sire

RED MINBURN COPENHAGEN 3Y  
**RED BRYLOR OTM COPENHAGEN 9K**  
RED BRYLOR OTHC REBA 49D

Dam

RED SIX MILE ELIMINATOR 241E  
**RED FRASER CHARITY 117J**  
RED JAS CHARITY 28D

RED RMJ REDMAN 1T  
MINBURN MAY 112M  
RED HXC HOT SHOT 4424B  
RED MCRAE'S REBA 49W  
PEAK DOT ELIMINATOR 100Z  
RED GLESBAR BARBIE 68Y  
BLACK BRYLOR KODIAK 204Y  
RED JAS CHARITY 25U

EPD	BW	WW	YW	Milk	Perf	BW	Adj WW
-1.5	43	72	19		66		

Consigned By: Fraser Farms



This female is stacked with some great maternal lineage! This will be the 3rd female offered from our Copenhagen herdsire that has done a great job for us. He was our selection from the Red Roundup sale a few years ago. He has had semen sell to some great breeders all over the continent and reports have been outstanding. Our Eliminator females have done a great job and all have fabulous udders that raise the good ones. Kodiak in a pedigree is never that bad either! Look for this female to build a cow family from! She's got a bright future wherever she goes!

Exposed to Red Howe Milo 58M  
April 24th to August 15.





Syringa is a cow family name that is synonymous with quality within the Red Angus industry. We selected Syringa 31E from the Touch of Class as a bred heifer and she has become a cornerstone for this prolific cow family within our breeding program. Moderate made and built for longevity these females are all production units. Township J191 is a bull that we own with Triple L Angus and originated in the very exciting breeding program of Jordan Rhodes in South Dakota. Calving ease and maternal merit is what has made the Red Angus breed so popular and is built deeply into this heifers DNA. Our commercial cattlemen loved the Township J191 sons this past spring and will certainly appreciate them even more when their heifers start calving next spring. She carries an AI service to our high selling bull from 2025, Midas 9M is a dark red, smooth built calving ease prospect that maintained growth and performance backed by the highly desirable Baroness cow family. Watch for great things from the Baroness' over the next few years.

AI – Red Kenray EW Midas 9M – April 25th. Exposed – Red H70 Quantock 406L– May 9th – June 16th.

27

## RED KENRAY SYRINGA 16M

Bred Heifer | Reg# 2384213 | February 11 2024 | KER 16M

Sire

RED U2 TOWNSHIP 17G  
**RED RREDS TOWNSHIP J191**  
RED RREDS PRIMROSE 420B

Dam

RED WILDMAN FERDINAND 839F  
**RED KENRAY SYRINGA 49K**  
RED KENRAY SYRINGA 7G

RED MRLA RESOURCE 137E  
RED U-2 BEAUTY 113Z  
RED BIEBER ROLLIN DEEP Y118  
RED BASIN PRIMROSE 4167  
RED WILDMAN PLATINUM 622D  
RED WILDMAN PRALEE 621D  
RED FLYING K ROOSEVELT 46C  
RED EYE HILL SYRINGA 31E

	BW	WW	YW	Milk
EPD	-2.1	28	53	25

	BW	Adj WW
Perf	65	

Consigned By: Kenray Ranch

28

## RED KENRAY TINSEL 128M

Bred Heifer | Reg# 2384285 | March 14 2024 | KER 128M

Sire

RED LWNBRG ELECTRIC 4D  
**RED LWNBRG RANGE ROAD 26J**  
RED LWNBRG CROSS OVER 150D

Dam

RED HOWE BOSS 313F  
**RED KENRAY TINSEL 157J**  
WCF CROWFOOT 0102X TINSEL 39C

RED ANDRAS FUSION R236  
RED LWNBRG SCARLET 62Z  
RED LWNBRG ROLLIN DEEP 90B  
RED TED ROMEO 149S OSC  
RED FLYING K BOSS 95C  
HOWE MS PROSPECTOR 36C  
XO CROWFOOT 0102X  
RED WCF MUL 26P TINSEL 60W

	BW	WW	YW	Milk
EPD	1.8	54	88	25

	BW	Adj WW
Perf	90	

Consigned By: Kenray Ranch



Tinsel is usually used on Christmas Trees as an accent to help bolster the overall appearance of all the precious decorations, it sits quietly in the background gently reflecting the twinkling lights some what fading into the background. This Tinsel certainly does not fade into the background. She is loaded with presence and has a feminine cut to her make up. We acquired the Tinsel family from our dear friend Gerry Walters of WCF Red Angus in Ontario. There are certain folks within this industry that leave a mark on your heart and Uncle Gerry was one of them. The Range Road sire was selected from the Leeuwenburgh's and happens to be a flush mate to the popular Adrenaline bull that was their high seller that same year. His progeny are all good footed, deep red and have a traditional Angus appearance about them. Tinsel carries service to the heifer bull prospect we sourced from H70 this spring as their second high selling Red Angus bull. He is backed by the outstanding Cockburn Absolute that blew me away this summer with his overall mass and structural integrity. We are impatiently awaiting the calves from this exciting new find.

Exposed – Red H70 Quantock 406L (PMY 406L) – April 17 – June 16





29

**RED J BAR DEE PROSPECTOR 9M** is an absolute powerhouse female that is admired for her length of body and depth of rib. She combines superior structure with her dark cherry red haired coat. Her grand dam Red Howe Prospector 231E was purchased at the Touch of Class sale and selected for her structural correctness and dimension. When you add the service to Red RReds Copper G929 it is sure to be an exciting combination.

AI April 26th to Red RReds Copper G929. Exposed to Red Dersta Adrenaline 18M May 10th to October 15th. Safe to AI

## 29 RED J BAR DEE PROSPECTOR 9M

Bred Heifer | Reg# 2389435 | February 01 2024 | JSS 9M

Sire	RED SIX MILE JOHN WICK 882E	RED U-2 RECKONING 149A
	<b>RED SIX MILE MOSSY OAK 175H</b>	RED SIX MILE & CO GLORIA 29A
	RED SIX MILE MISS LARK 225E	RED RUST BULL 31B
		RED SIX MILE MISS LARK 300C
Dam	RED J BAR DEE THUNDERHEAD 3F	RED SIX MILE & CO JAGGER 780A
	<b>RED J BAR DEE PROSPECTOR 32H</b>	RED TRIPLE L SYRINGA 54D
	RED HOWE MS PROSPECTOR 231E	RED HOWE SHINE 222B
		RED HOWE MS PROSPECTOR 122T

EPD	BW	WW	YW	Milk	Perf	BW	Adj WW
	1	54	93	25		76	

Consigned By: J Bar Dee Farms

## 30 RED JJL MS GRAVITY 402M

Bred Heifer | Reg# 2355352 | January 01 2024 | JJL 402M

Sire	RED ANDRAS FUSION R236	ANDRAS IN FOCUS B175
	<b>RED LWNBRG FIRESIDE 77G</b>	RED ANDRAS BELLE B167
	RED LWNBRG PEACEMAKER 92B	RED GMRA PEACEMAKER 1216
		RED TED NEW TREND 108P
Dam	RED T&S LOADED 78H	RED TRIPLE H LOADED ARAB 31D
	<b>RED JJL MS GRAVITY 11K</b>	RED T&S MISS HIGH TOP 14E
	BLAKE'S MS GRAVITY 102H RC	YOUNG DALE HI DEFINITION 185B
		BLAKE'S MS GRAVITY 43D

EPD	BW	WW	YW	Milk	Perf	BW	Adj WW
	-1.7	40	76	20		70	621

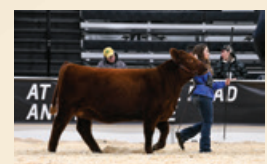
Consigned By: JJL Livestock



30

We made a hard decision this fall to let go almost our entire group of bred heifers. This heifer was a debate to say the least. She is angular, feminine and carries the skull shape and look of a cow already. Her Dam, Red JJL Mis Gravity 11K, is an ideal female, moderate frame with low birth to high weaning spread. Her Sire, Red Leeuwenberg Fireside 77G, has worked extremely well for us. A Paternal sister raised our first pick of the bull pen this year, another paternal sister sold through this very sale last fall and two Pa-ternal brothers were top pick of our 2024 bull pen. She is bred early to our calving ease herd sire, Red Flying K Finished Product 107M. He is a stylish, solid footed sleep easy heifer bull.

Observed bred April 11th, 2025 Red Flying K Finished Product 107M (Favourable) Due Jan 18, 2026



Dam





31

4M is an absolute head turner whom has been admired as one of the top heifers in the group since she was a calf. She has a real maternal look to her with exceptional balance, structure and is dropping down a gorgeous udder. She reminds me a lot of her grandmother 802F who topped the TOC as a bred in 2019. Her sire is the Navigation bull who was a feature bull in our sale selling to Golden Sunset Ranch. This bull was done his made his mark with a top set of bulls and even more impressive daughters. Her dam is an awesome Roosevelt daughter going back to a great black red carrier we purchased from Howe's. 4M's paternal brother is a stand-out in our bull pen and will be one to watch for this coming spring. She is favourable to the AI service of Rockefeller 3L that topped our bull sale in 2023 to Jensen's and Hawkeye Ranching.

AI: Apr. 9 to Red Eye Hill Rockefeller 3L (Favourable).  
Exposed Apr 15th to May 20th to Red Golden Sunset Boxer 11M

31

### RED EYE HILL LASS 4M

Bred Heifer | Reg# 2371661 | January 03 2024 | PBS 4M

Sire

RED FLYING K NAVIGATOR 25G  
**RED EYE HILL NAVIGATION 59J**  
RED FRASER MISS 802F

Dam

RED FLYING K ROOSEVELT 46C  
**RED EYE HILL LASS 61J**  
HOWE LASS 41B

RED VGW SPOT LITE 772  
RED FLYING K DUCHESS 25C  
FRASER POKER FACE 613D  
RED FRASER MISS 601D  
RED BIEBER ROOSEVELT W384  
RED FLYING K LANA 185Z  
TOWAW TEMPT 15X  
RED HOWE LASS 130R

	BW	WW	YW	Milk
EPD	3.2	48	78	25

	BW	Adj WW
Perf	86	639

Consigned By: Eye Hill Stock Farm

32

### RED EYE HILL MS POTEET 11M

Bred Heifer | Reg# 2371672 | January 07 2024 | PBS 11M

Sire

RED 5L BOURNE 117-48A  
**RED DAHLKE ROCKEFELLER 009H**  
RED DAHLKE MS HILTON 13F

Dam

RED FRASER REGAL 909G  
**RED EYE HILL MS POTEET 15K**  
RED GEIS MISS POTEET 68'10

RED 5L ADVANTAGE 3267-221Y  
RED 5L ROXIE 854-117  
RED BIEBER CL ATOMIC C218  
RED DAHLKE MS HILTON 263C  
FRASER POKER FACE 613D  
RED FRASER MISS 601D  
RED GEIS KNIGHT HAWK 27'05  
RED RIVERDALE MISS POTEET 368L

	BW	WW	YW	Milk
EPD	0.7	56	79	27

	BW	Adj WW
Perf	74	674

Consigned By: Eye Hill Stock Farm



32

An absolute dark red powerhouse; her picture absolutely shows you what she is. She's the kind that will crank out herd bulls. A well respected cattleman of a different breed asked me if I was selling her this fall; long story short he told me I was an idiot if I did. After a year hiatus I thought, it was only fitting to make sure the very best representation of our program came to town. 11M's sire the Rockefeller has done some awesome things in our program; well received bulls and the females are well structured, dark red, with great udders. The Ms. Poteet cow family has been one of the anchors of our red program as she traces back to 68X. Throw in the Regal 909G sire; 11Ms pedigree is maternally stacked. There have been a couple females let go out of this family in past TOC's to DKF and Double F. She is bred to a dark red calving ease bull we sourced from Golden Sunset this spring that is out of their donor 7D cow. We are very excited to see his calves.

Exposed Apr. 15 to May. 20 to Red Golden Sunset Boxer 11M





GT Doll 412 is the product of an embryo purchase from the Wraz Red angus dispersal, 412 is loaded with presence volume and rib shape. A daughter of Wiwa Creek Rush Lake 71'12 and Red Ringstead Doll 44X, 412 traces back to some of the great maternally oriented programs in both the black and red sides of the breed. Her mating to Red Bar MM Convoy 127K makes her incredibly hard to part with, we can all thank Phil for his infamous hospitality resulting in this opportunity for both Black and red breeders alike!

AI May 5th Red Bar MM Convoy 127K (Favourable), June 1st - July 15th Eastondale Status 208'22



Service Sire

33

## GT DOLL 412

Bred Heifer | Reg# 2392378 | February 05 2024 | NTG 12M

<p><i>Sire</i></p> <p>SOO LINE MOTIVE 9016  <b>WIWA CREEK RUSH LAKE 71'12</b>          WIWA CREEK PRIDE 63'10</p> <p><i>Dam</i></p> <p>RED BRYLOR SDL SQUALL 230S  <b>RED RINGSTEAD DOLL 44X</b>          RED WILDMAN DOLL 304H</p>	<p>HF KODIAK 5R          TLA BEAUTY 5R          WIWA CREEK FULLBACK 19'07          WIWA CREEK PRIDE 94'06          RED BRYLOR SDL PASQUALE 213P          RED CYT FANNY 15P          RED LMAN ROBIN HOOD 1174B          RED TOWAW DOLL 67P</p>
---	---

EPD	BW	WW	YW	Milk	Perf	BW	Adj WW
	0.7	50	78	20		85	591

*Consigned By: GT Angus*

## Can't make it to the sale? Internet Bidding available.

To view this sale visit [www.dlms.ca](http://www.dlms.ca). Fill out the registration form located under registration and sign-up for your free user account and select a username and password.

**BIDDERS** - To be approved as a bidder, login to [www.dlms.ca](http://www.dlms.ca) and click BUYER APPROVAL tab, select the sale you are interested in bidding at and click sign up.

**For more information call a DLMS Rep:**  
**Mark Shologan 780-699-5082**  
**DLMS Purebred Team 780-991-3025**

## Can't make it to the sale? Internet Bidding available.

# D | L | M | S

[www.dlms.ca](http://www.dlms.ca)





Zara Lisa 83D



Belle 6M



Lucy 71C



Princess 99Z



Ruth 80J



Ruth 70Y



Ruth 88A



Ruth 73M



Ruth 70F

# 34

## PICK OF THE BRED HEIFERS

*Consigned By: Northern View Angus*

Well, this is easily our best set of bred heifers we have offered choice of. LOL! Ya you're right, it is the only time we have offered a choice of our breds. We were totally tickled to keep each and every one in our group. So, our intention was not to sell any breds this year. We have them bred the way we like, for when we like and all that good stuff. At the Sk. Angus Tour here this summer folks all had different picks of which bred they liked. No one heifer had more tally marks beside her than another. Soooo! Here we are, offering you choice of all our breds.

The consistency, quality and genetic predictability is what makes us super proud of this group. In our mind there is not one marginal heifer in the bunch. The two breds we have pictured are very much representative of the entire group. We believe they will all have great structure in their feet, udder, head design, front end.... We have bred calving ease, performance and production into of all our females. The cow family's have evolved here over the year's. As we started as a "Little Ole Hayseed from Duff, Sk." we purchased the Ruth's, Tibbie's, Belle's and Beauty's. Over time we added a Princesses, Zara Lisa's, Susan's, Rosebud's and Blackcap's. Each of these cow families have been carefully bred and selected. They have proven to be uniform and consistent in what they produce for us. We can't have females that produce just heifers or just bulls. We have been very diligent in our breeding program for birth weight and performance. While the numbers game are part of what we work on, the structure, design, functionality and over all production also guides our program. It sucks when you have a beautiful female that you want to keep but there are flaws that you just can't live with/accept and you have to throw them on the trailer and take them to town. But this is what we do to try to improve our herd and production each and every year.

It is this first time and will likely not happen very often in the future, where we have all 17 of our bred heifers on offer. Typically, we retain around 15% yearling heifers for replacements each year. There are numerous 1/2 siblings or more based on the maternal and paternal side of things. While we have tremendous confidence in each cow family, we are also confident on the sire's side of things. The AI sires we used have proven strong for us in production. Walking bull wise, well if Northern View Super Duty 89F was a human he would have trouble walking around with his swollen head. We pump his tires a lot. Absolutely, love this bull and what he has done for us with each and every mating. We have 25 active females in our herd from him. If you analyse the pedigrees of these breds you will see how he has a tie to virtually every heifer in the group. Its scary really.

Anyway, my endless ramblings could continue forever on this group. I love to talk cattle. Shane said "U ONLY GET ONE PAGE!" and Amy just said, "Haven't you finished the footnotes yet?" So, I guess I will wrap up. In many ways we feel we could throw a dart at the group and take the heifer we hit and get a very good female. We welcome calls, visits and tours to you to see what we have here. The heifers will be in the field with the rest of the herd just being a bovine, but they are right near home.

These girls will be close to calving on sale day so timing in the selection of the heifer is tight needing to be done by Decemeber 31st ish. Since we are kicking and screaming a bit with allowing this choice, we also want to reserve the right to a successful flush of the selected heifer. Of course, this will be at our expense and timing would be negotiated with the purchaser.

We AI as many heifers as we can up to May 4th and then they are exposed to Sandy Bar Dillinger 746M-affectionately named Beauzo. In our mind he was the best calving ease bull on offer by them this year.

Thanks for your time and we hope to hear from you.





Style to burn on this one! M'Brook Lass 23M is the kind that catches your eye for all the right reasons. Good footed, deep bodied, beautiful front end, and an udder placement that makes her built to last. She traces back to a strong and proven cow family that came from Wes Glen-nie. The dam, 88C, is a Kodiak female that is as solid as they come. 23M's sire is a past high seller from the great people at Everblack Angus. ROI 309H has definitely left his mark on our herd producing "our kind", much the same as many other Stamina sired bulls across the coun-try. First set of milking daughters were exactly what we hoped for. Gorgeous udders, and weaned off big heavy calves this fall. If you fancy yourself as a sweet tooth, here is the icing on the cake—AI'd to HF Syndicate 213Z. Semen is hard to come by and the coupon inside alone might just create a little "Return On Investment" for yourself!

AI April 28th- HF Syndicate 213Z.  
Exposed Autumn Dew Prison Break  
13K May 7th-July 7th.

## 35 AUTUMN DEW BLACKBIRD 23M

Bred Heifer | Reg# 2380098 | February 07 2024 | LHD 23M

Sire

BAR-E-L STAMINA 11F  
**EVERBLACK ROI 309H**  
EVERBLACK BLACK LADY 178E

Dam

SOO LINE KODIAK 1127  
**AUTUMN DEW BOSTA BLACKBIRD**  
GLENNIE BOSTA BLACKBIRD 19W

BROOKING REAL ESTATE 6072  
BAR-E-L MIA 100D  
U2 BLACKROCK 43Y  
EVERBLACK BLACK LADY 48B  
HF KODIAK 5R  
GEIS PRIDE 114'99  
YOUNG DALE ELWAY 56R  
GLENNIE BOSTA BLACKBIRD 20S

EPD	BW	WW	YW	Milk
3.2	48	78	24	

Perf	BW	Adj WW
87		

Consigned By: Autumn Dew Angus

## 36 AUTUMN DEW MISSIE 39M

Bred Heifer | Reg# 2395544 | February 08 2024 | LHD 39M

Sire

SITZ BARRICADE 632F  
**ELLINGSON BRICKHOUSE**  
EA BELLS GIRL 7617

Dam

MOHNEN SOUTH DAKOTA 402  
**AUTUMN DEW MISSIE 24H**  
JL MISSIE 8286

SITZ STELLAR 726D  
SITZ BARBARAMERE NELL 765D  
KOU PAL ADVANCE 28  
EA BELLS GIRL 2181  
MOHNEN DENSITY 730  
MOHNEN JILT 539  
B HILLS FRL DURATION 606  
MVF MISSIE 144N

EPD	BW	WW	YW	Milk
2.1	65	111	24	

Perf	BW	Adj WW
80		

Consigned By: Autumn Dew Angus



Stop and stare at this fine bovine! Missie 39M is a unique pedigreed breeding piece that you are not going to see everyday in Canada. Sired by Ellingson Brickhouse, a powerful cowboy type bull that has alot of maternal upside to him. The dam is none other that EA Bells Girl 7617, and she has cranked out many top end bulls, which also includes EA Badlands. We have had two calf crops off Brickhouse, both which have landed several top end bulls and heifers in our re-placement pens. Our private treaty bull sales last year was highlighted by a Brickhouse bull that found his way into the purebred herd of LK Ranch at Oxbow. Missie 39M has an absolute powerful SD dam, but does this with a pretty front, excellent udder, and a set of feet that are near perfect. We have a few SD working cows that are always picked out on herd tours. Missie is AI'd to HF Reverence 23K, A bull that had many highlight sons sell this past spring.

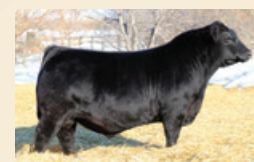
AI on April 22th- HF Reverence 23K.  
Exposed Autumn Dew Prison Break  
13K May 7th-July 7th.





Cow, maternal and front pasture kind are a few words that come to mind when thinking about 407M. Not only does her pedigree boast a high degree of accomplished cow power, but visually 407M backs it up as well. She's feminine headed, angular female that's bold in her rib and lay-ing down a fantastic udder. Her early service to the Alpine bull comes highly regarded as his first calf reports are exciting which makes this service more intriguing. Get in on the ground floor of this new, exclusive sire that continues the tradition of the great Bar E-L Erica 74A! Come view 407M at the yards at CWA.

AI Haroldson's AH Alpine 271L April 2nd. Exposed to Young Dale Khan 16H April 23rd- June 26th. Favourable to AI.



Service Sire

37

### NU-HORIZON LADY 407M

Bred Heifer | Reg# 2374513 | January 16 2024 | TK 407M

Sire

BUBS SOUTHERN CHARM AA31  
**BUSHS GRIT 501**  
BUSHS BLACKBIRD 4609

Dam

S A V 004 DENSITY 4336  
**NU-HORIZON LADY 248K**  
NU-HORIZON LADY 549C

SILVEIRAS CONVERSION 8064  
HICKORY HILL ERICA 009  
BASIN EXCITEMENT  
BUSHS BLACKBIRD 1760  
S A V 8180 TRAVELER 004  
S A V MAY 7238  
JL UPWARD 1196  
LADY OF RING CREEK 17W

EPD	BW	WW	YW	Milk
3.1	73	112	25	

Perf	BW	Adj WW
79	673	

Consigned By: Nu Horizon

38

### LOCK 41K ATLANTA 331M

Bred Heifer | Reg# 2446350 | February 22 2024 | JOLO 331M

Sire

MINBURN RENOVATION 25H  
**MINBURN RENOVATION 41K**  
MINBURN DUCHESS 191E

Dam

BCC SOUTHERN STRENGTH 31C  
**WARD'S PR ATLANTA 9E**  
FRL ATALANTA 002X

S A V RENOVATION 6822  
MINBURN BLACKBIRD 76C  
MINBURN REBEL 134C  
MINBURN DUCHESS 64B  
MOHNEN SOUTH DAKOTA 402  
BJ LADY WREN 28W  
KBJ ROGUE II 203H  
FRL ATALANTA 823U

EPD	BW	WW	YW	Milk

Perf	BW	Adj WW
82		

Consigned By: Lock Livestock



Long, deep and pretty. a heifer right form the top of the pen, and out of a Wards bred cow that raised our lead of high seller this past years bull sale. This female is from the first calf crop of our herd sire Renovation. his dam is truly one of the greats of the breed. I expect 331M to be an outstanding female anywhere she goes and produce excellent calves along the way. Bred for late Feb to our calving ease walking bull Belvin Jigsaw 69J, whose sons averaged us over \$10,000 this past spring. Tink about the coupon that's in this heifer.

Exposed May 8th to July 14th to BELVIN JIGSAW 69J. Due late February





39

We're proud to offer 15M in this year's TOC sale. A long-bodied, smooth made heifer that combines substance, femininity, and balance in a very complete package. Sired by SAV Brave, 15M offers a fresh twist in this year's lineup with her combination of performance and maternal quality. She's already starting to lay down a beautiful udder, and there's plenty of excitement about the coupon inside. 15M is the kind of female that blends power, style, and predictability, the type to build around.

AI to Belvin May City on May 1.  
Exposed to Haynes Renewal 11L  
May 10th to July 1st. Checked  
favourable to AI.

39

## HAYNES BLACKBIRD 15M

Bred Heifer | Reg# 2371760 | February 07 2024 | MH 15M

Sire

SA V MANDAN 5664  
**SA V BRAVE 8320**  
SA V MAY 2397

Dam

YOUNG DALE XCALIBER 32X  
**ROYAL S BLACKBIRD 20B**  
ROYAL BLACKBIRD 5U

SA V 8180 TRAVELER 004  
SA V ABIGALE 0451  
SA F 598 BANDO 5175  
SA V MAY 7238  
YOUNG DALE KNOCK OUT 134U  
BROOKMORE TIBBIE 222T  
K C F BENNETT TOTAL  
ROYAL BLACKBIRD 20N

EPD	BW	WW	YW	Milk	Perf	BW	Adj WW
2.9	51	96	18		78	518	

Consigned By: Haynes Angus

40

## HAYNES ROSEBUD 21M

Bred Heifer | Reg# 2363373 | March 05 2024 | KH 21M

Sire

COLEMAN TRIUMPH 9145  
**BROOKING TRIUMPH 2018**  
TLA BEAUTY 5R

Dam

SA V RESOURCE 1441  
**FV QUEEN ROSEBUD 152F**  
F V QUEEN ROSEBUD 269D

COLEMAN BRAVO 6313  
LAWSON'S CHLOE C815  
RR 7407 RAINMAKER 2154  
TERRLENE BEAUTY 35F  
RITO 707 OF IDEAL 3407 7075  
SA V BLACKCAP MAY 4136  
JINDRA DOUBLE VISION  
F V QUEEN ROSEBUD 655W

EPD	BW	WW	YW	Milk	Perf	BW	Adj WW
4.8	60	109	20		96	631	

Consigned By: Haynes Angus



40

Here is a powerhouse of a heifer, she is extremely long spined with some added muscle shape while standing on a near perfect foot with ideal teat size and placement. I purchased a small package of bred heifers from David Johnston a few years ago and the dam of this heifer was my pick of all of the heifers I saw touring, and today she's still my pick. The sire is a Triumph son that is a maternal brother to Soo Line Motive, he has left me with some fantastic daughters. Crossing the Triumph bull with a direct Resource daughter she is bound to be a power packed, sound cow that will be a top end producer. She is bred early to Coleman Platinum which just compounds more high quality cows into the pedigree.

AI April 13th to Coleman Platinum  
2622 (safe). Exposed to Haynes  
Renewal 11L May 10th - July 19th





41

Fall of 2023 we wanted to increase our numbers in our black herd, consequently we selected a large group of cows from the Black Meadows dispersal and what a fit they've been. Powerful cows with some length and performance best describes those cows oh, and very productive. Harvester 401G was a bull with plenty of meat and muscle and come from the excellent Blackwood Lady cow family. You can count on this heifer to go home and produce just as her dam is doing for us! Carrying service to the high selling bull from Double F this spring, this HF Show Time son is impressive!

Exposed to DFCC 78H Magnum 7M April 18th- July 15th. Due late January / early February.



Sire

41

### TRIPLE L LUCY 74M

Bred Heifer | Reg# 2439480 | March 13 2024 | RKT 74M

Sire

BJ'S HARVESTOR 412  
**BLACK MEADOWS HARVESTOR 401G**  
BLACK MEADOWS BWD T LADY 6Y

Dam

YOUNG DALE ABSOLUTE 3D  
**BLACK MEADOWS LUCY 37G**  
BLACK MEADOWS LUCY 308E

S A V HARVESTOR 0338  
MERIT JILT 7091  
HF TIGER 5T  
BLACK KMEADOWS BLKWOOD LADY 72  
YOUNG DALE ABSOLUTE 113A  
YOUNG DALE MIA 33B  
BAR-E-L CANDIDATE 10C  
BLACK MEADOWS LUCY 617X

EPD	BW	WW	YW	Milk
4	61	112	25	

Perf	BW	Adj WW
91		

Consigned By: Triple L Angus

42

### AJA MAYFLOWER 423M

Bred Heifer | Reg# 2369469 | January 12 2024 | AJA 423M

Sire

S POWERPOINT WS 5503  
**ELLINGSON PROFOUND 8155**  
EA ROSETTA 6157

Dam

CONNELLY CAPITALIST 028  
**AJA MAYFLOWER 113J**  
DEERE ROSE MAYFLOWER 8D

TEHAMA REVERE  
S QUEEN ESSA 248  
CONNELLY CAPITALIST 028  
EA BLACKBIRD 0038  
S A V FINAL ANSWER 0035  
PRIDES PITA OF CONANGA 8821  
S A V NET WORTH 4200  
MAYFLOWER OF DEERE ROSE 6Y

EPD	BW	WW	YW	Milk
4.4	66	116	15	

Perf	BW	Adj WW
85		

Consigned By: AJ Angus



42

AJA 423M is a great female that that stands out and is easy to find. Docile and gentle. 423 is a Profound daughter that is bold ribbed, has that extra center of body but is still very well balanced and long spined. She has the excellent foot that Profound is known for.

AI'd SAV Magnum April 22nd. Due January 29th



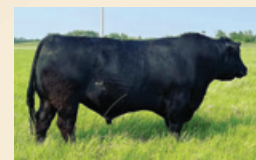
Maternal Grandsire





We admire what DFCC 89J MCKENNA 59M has to offer and she is very hard to part with. She is a big stout, long bodied female with overall attractiveness. 59M's sire, EVERBLACK ROI 89J, has given us the kind of females that you can never have enough of!! Her dam, DFCC 15C FOREVER LADY 110F has been nothing but stellar in her production. A maternal brother is working extremely well at Brandy Lane Cattle Corp. There is no guesswork here... DFCC 89J MCKENNA 59M will make an exceptional cow!

Exposed to Greenwood Standout 1M (1/6 sons from Topp Standout that have sold in Canada) April 4th – May 19th. May 24th- June 19th to the High Selling bull, Riverside Maverick 88M. Due February.



Maternal Brother

43

### DFCC 89J MCKENNA 59M

Bred Heifer | Reg# 2369214 | January 28 2024 | DFCC 59M

Sire

BAR-E-L STAMINA 11F  
**EVERBLACK ROI 89J**  
GARNIER B T QUEEN 217D

Dam

DFCC 36Z CAPITAL 15C  
**DFCC 15C FOREVER LADY 110F**  
TRIPLE L PRIDE 7T

BROOKING REAL ESTATE 6072  
BAR-E-L MIA 100D  
VISION UNANIMOUS 1418  
EVERBLACK B.T QUEEN 64X  
HF BINGHAMTON 36Z  
BELVIN BARONESS 108'09  
TC GRID TOPPER 355  
TRIPLE L PRIDE 19M

EPD	BW	WW	YW	Milk	Perf	BW	Adj WW
0.4	50	81	18		70		

Consigned By: Double F Cattle Co

44

### DFCC 24K MELROSE 87M

Bred Heifer | Reg# 2384440 | February 14 2024 | DFCC 87M

Sire

CRAWFORD GUARANTEE 9137  
**COUNTRY LANE GUARANTEE 24K**  
HLC MAIDEN 200E

Dam

NORSEMAN KODIAK 5'11  
**DFCC 5Y DESTINY 64D**  
DFCC 33T SWEET THING 20W

CONNELLY PAYRAISE  
CRAWFORD MS ARMORY D40  
MICH MOB BOSS 1425  
HLC 12 MAIDEN 458B  
SOO LINE KODIAK 9172  
NORSEMAN QUEEN RUTH 42'09  
SOUTHLAND OLD SKOOL 33T  
EGGEN FAME MISS 8P

EPD	BW	WW	YW	Milk	Perf	BW	Adj WW
3.3	52	104	25		79		

Consigned By: Double F Cattle Co



DFCC 24K MELROSE 87M is very easy on the eyes and really puts it all together! She is a beautiful profiling heifer with extra extension, bold rib and huge top. One purebred breeder referred to her as SHE IS SEXY! The dam is old 64D has a power packed pedigree and left us with some excellent progeny. I expect nothing less from 87M. DFCC 24K MELROSE 87M has a bright future as a front pasture cow and see her as a future donor cow. This is an opportunity not to be missed out on!

Exposed to Greenwood Standout 1M (1/6 sons from Topp Standout that have sold in Canada) April 4th – May 19th. May 24th- June 19th to the High Selling bull, Riverside Maverick 88M. Due late January.



Service Sire





We opened the gate and Shane had access to all our bred heifers this year and he selected a dandy here. We used Sterling Pacific heavily in the 2023 breeding season and had great results. The male calf crop was very well received in our spring bull sale! Nice mid road birth with good growth and outstanding foot quality. The female portion of the calf crop are equally as desirable, very well balanced, deep flanked females with a very nice feminine maternal look. This female Erica 36'24 is a peach from a peach of a cow family. This cow family if quickly becoming larger here and for all the right reasons.

Bred AI May 8th to Lunds B Bar Black Mass 3045. Preg Checked favorable. Exposed to Brandy's Black Tie 211L May 28 to Aug 6.



Dam

45

## EASTONDALE ERICA 36'24

Bred Heifer | Reg# 2384314 | February 10 2024 | VK 36M

Sire

HOOVER NO DOUBT  
**STERLING PACIFIC 904**  
BALDRIDGE ISABEL B082

Dam

EASTONDALE REALLY WINDY 06'13  
**EASTONDALE ERICA 5618**  
LOCUST GROVE ERICA 7D

MOGCK BULLSEYE  
MISS BLACKCAP ELLSTON J2  
G A R PROPHET  
BALDRIDGE ISABEL Y69  
V D A R REALLY WINDY 4097  
EASTONDALE ANNIE K 60'11  
ALBERDA TRAVELER 416  
LLB ERICA 220N

EPD	BW	WW	YW	Milk
0.8		62	120	14

Perf	BW	Adj WW
	65	563

Consigned By: Eastondale Angus

46

## EASTONDALE BETSY 84'24

Bred Heifer | Reg# 2386584 | February 20 2024 | VK 84M

Sire

SIX MILE DROPTINE 811G  
**VALLEY BLOSSOM DROPTINE 767K**  
VALLEY BLOSSOM LASS 13Y

Dam

HF REFLECTION 241C  
**EASTONDALE BETSY 113'19**  
EASTONDALE BETSY 108'16

REMITALL F DIESEL 76D  
EXAR BLACKBIRD 1916  
HOLMAN COOL COUNTRY 845  
JOINT CREEK 3R LAD 723T  
LLB REFLECTION 607A  
HF TIBBIE 77Z  
BEAR CREEK T.D. 796A  
EASTONDALE BETSY 108'03

EPD	BW	WW	YW	Milk
1.9		63	110	25

Perf	BW	Adj WW
	68	542

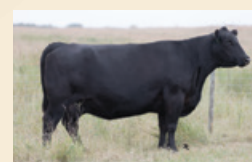
Consigned By: Eastondale Angus



Balanced, depth of body and really nice female features describe this bred female. Her sire was the high selling bull in the 2023 Short Grass bull sale and has done a really nice job breeding here.

Lots of very good cattle in this female's pedigree, 4 plus generations back. You will love the look of this female in the flesh.

Bred AI April 26th to Lunds Bar B Black Mass 3045. Preg checked favorable. Exposed to Eastondale Status 208'22 May 20th to Aug 6th.



Granddam





A feminine DMM Fullsteam female from the Duchess cow family from Eastondale Angus which have been very productive. We will be calving our first Fullsteam females this winter and are very happy with their femininity and developing udder structure. They are moderate broody females.

AI April 10 to Sitz Accomplishment 720F. Exposed April 22 to Ellingson Bold 4723 (one of our new walking herd sires purchased last spring with Wishbone Cattle Co.) Vet check 5 months September 9 (safe to AI)

## 47 NESSET LAKE DUTCHESS 13M

Bred Heifer | Reg# 2400451 | January 16 2024 | IDM 13M

Sire	DMM STACK 8D	74-51 SUDDEN LOOK 1023
	<b>DMM FULL STEAM 35K</b>	DMM MISS ESSENCE 14Y
	DMM MISS ESSENCE 83H	DMM HUXLEY 102E
		DMM MISS ESSENCE 38D
Dam	HI LOW DAKOTA 49D	MOHNEN SOUTH DAKOTA 402
	<b>NESSET LAKE DUTCHESS 149K</b>	HILOW PRIDE 49Z
	NESSET LAKE DUTCHESS 206C	NESSET LAKE TIGER 26Z
		EASTONDALE DUTCHESS 42'09

	BW	WW	YW	Milk		BW	Adj WW
EPD	2.9	48	90	19	Perf	74	548

Consigned By: Nessel Lake Angus

## 48 NESSET LAKE JUNE 52M

Bred Heifer | Reg# 2440596 | February 14 2024 | IDM 52M

Sire	ELLINGSON ROUGHRIDER 4202	CONNELLY EARNAN 076E
	<b>NESSET LAKE ROUGH RIDER 84J</b>	EA BLACKLASS 8914
	NESSET LAKE RUDY 61B	HF SEQUEL 40Y
		DOUBLE AA RUDY 687'06
Dam	NESSET LAKE PAYWEIGHT 69C	BASIN PAYWEIGHT 107S
	<b>NESSET LAKE JUNE 56F</b>	NESSET LAKE LASS 24W
	NESSET LAKE JUNE 53A	HF SEQUEL 40Y
		NESSET LAKE JUNE 18U

	BW	WW	YW	Milk		BW	Adj WW
EPD	3.7	62	99	16	Perf	100	

Consigned By: Nessel Lake Angus



A large volume angular heifer. One of our first females offered from our Roughrider 84 J who has been doing an awesome job on both males and females. His first daughters in production at Wishbone Cattle Co. are very feminine with nice tidy udders. Having Payweight 107S, Sequel on the bottom side pedigree will guarantee productive females.

AI April 10 to HF Sequel 40Y. Exposed April 22 to Ellingson Bold 4723 (one of our new walking herd sires purchased last spring with Wishbone Cattle Co.) Vet check 5 months September 9 (safe to AI)





HTD 55M is deep bodied power heifer. Her dam is a powerful Mohnen South Dakota daughter. Our South Dakota daughters consistently wean some of our heaviest calves each fall. Lots of longevity in this Eston Anne cow family. Our original Eston Anne was purchased in 1981 from the Sisson Bros. She produced 13 natural calves. 55M was observed bred May 2nd to Peak Dot Tanker 211M. Tanker 211M was our choice this spring for calving ease (birthweight 57lbs) with high potential growth (1570 lb sale weight)

Vet checked August 8th favorable to observed date. Due early February

49

## HI LOW ESTON ANNE 55M

Bred Heifer | Reg# 2402072 | February 28 2024 | HTD 55M

Sire

TEX PLAYBOOK 5437  
**HI LOW PLAYBOOK 46H**  
HI LOW PRIDE 117D

Dam

MOHNEN SOUTH DAKOTA 402  
**HI LOW ESTON ANNE 25E**  
HILOW ESTON ANNE 9X

BASIN PAYWEIGHT 1682  
RITA 1C43 OF 9M26 COMPLETE  
GGA UPWARD 23B  
HILOW PRIDE 47B  
MOHNEN DENSITY 730  
MOHNEN JILT 539  
DLD 4R NEW ELIXIR 66U  
HILOW ESTON ANNE 24U

EPD	BW	WW	YW	Milk
2.2	56	96	26	

Perf	BW	Adj WW
89		

Consigned By: Hi Low Angus

50

## HI LOW ERICA 69M

Bred Heifer | Reg# 2402079 | March 08 2024 | HTD 69M

Sire

GREENWOOD GUNSLINGER JJP 73G  
**CMT GUNSLINGER 244K**  
CMT NEONIA 923G

Dam

PEAK DOT ROUGHRIDER 2063G  
**HI LOW ERICA 47J**  
HI LOW ERICA 33D

HOOVER NO DOUBT  
RRD TIBBIE 28Z  
YOUNG DALE RADIUS 44D  
SANDY BAR NEONIA 42D  
ELLINGSON ROUGHRIDER 4202  
PEAK DOT BARDOLIA 482B  
MOHNEN SOUTH DAKOTA 402  
HILOW ERICA 29X

EPD	BW	WW	YW	Milk
2.9	60	107	24	

Perf	BW	Adj WW
75		

Consigned By: Hi Low Angus



HTD 69M is a sweet fronted moderate framed heifer. She is sired by CMT Gunslinger 244K. A bull I admired for his performance, sound feet, and overall proud herd bull presence. Good pictures and videos definitely got me interested in CMT 244K. I was not disappointed when he stepped off the trailer. The Erica cow family has deep roots in our herd with the original Erica arriving here in 1982. My favorite Erica was 21G who produced for 18 years. She would come stand by the gate to the barn a day or two ahead of calving. 69M will carry service as well to Tanker 211M. He boosts a calving ease epd +14 and -1.3 bw epd which are in the breed top 1% and top 4% respectively.

Exposed after May 15 to Peak Dot Tanker 211M. Due late February – early March.

50





Selling bred heifers is always a difficult decision because you have put in all the time, effort and money to get them so close to production and then don't get to see the reward, so we don't take it lightly. Cindy 10M stems from a group of Big Sky cows we bought years ago and what a group of cows it was. The Cindy family has turned into a staple at our place and are held in high regard. 10M is going to be a productive female for a long time with excellent udder quality, her mother 66H is cow you love to show off. I have written enough about what we think of our Show Biz females and this bred heifer is no different. The breeding to the \$50,000 HF Spearhead 94L is exciting and offers instant return on your investment.

AI ed April 10th to Coleman Below Zero. Exposed April 24-May 20 to HF Spearhead 94L (favourable).

51

Sire

51

## ROY MAC CINDY 10M

Bred Heifer | Reg# 2367009 | January 04 2024 | ROY 10M

<p><i>Sire</i> SCHIEFELBEIN SHOWMAN 338 <b>HF SHOW BIZ 226J</b> HF TIBBIE 73D</p> <p><i>Dam</i> MERIT BUCK 7009 <b>ROY CINDY 66H</b> BIG SKY BLACKBERRY 112</p>	<p>SCHIEFELBEIN ATTRACTIVE 4565 FROSTY ELBA 3745 HF DEFENDER 146B HF TIBBIE 263Y HF UNIT 14C MERIT LADY FANNY 5109C KX KEMOSAHBEE 4W KX BLACKBERRY 3T</p>
---	---

EPD	BW	WW	YW	Milk	Perf	BW	Adj WW
	2.8	62	114	27		88	614

*Consigned By: Roymac Angus*







Offering a flush from a donor cow that has served us well over the years and at 14 years young she rung the bell with another heifer calf. (Castle wasn't getting her) Sound, productive Lucy 62Y is a model Angus cow in every way. We have four bulls by 62Y and DMM Crank that will highlight our offering at the Sudden Impact Bull Sale in April. Two years ago Peake Cattle Co purchased three embryos and received three calves which Michelle reports that they are good!

Flush to be performed in April of 2026, guaranteed 6 #1 embryos with no top on it, you get them all! Terms half down sale day, remained upon completion of the successful flush. We will open our semen tank to any bull in there.

52

## EASTONDALE LUCY 62'11

Embryos | Reg# 1622994 | February 20 2011 | VK 62Y

Sire

LEACHMAN RIGHT TIME  
**B HILLS FRL DURATION 606**  
H A BELETTA 0219

Dam

DRYLAND MAX 533  
**EASTONDALE LUCY 45'08**  
EASTONDALE LUCY 50'05

N BAR EMULATION EXT  
LEACHMAN ERICA 0025  
A A R RAINMAKER 7407  
H A BELETTA 8615  
GEIS MAXIMUM 80'01  
HOLBROOK BLACKWOOD 4H  
TC MOONSHINE 001  
V D A R LUCY 834

EPD	BW	WW	YW	Milk
2.4	40	67	25	

Perf	BW	Adj WW
80	567	

Consigned By: Triple L Angus

53

## RED SPITTALBURN MISSEY 314A

Embryos | Reg# 1731892 | February 08 2013 | GRAY 314A

Sire

RED 5L NORSEMAN KING 2291  
**RED RMJ REDMAN 1T**  
CROWFOOT KURUBA 4033P

Dam

RED SIX MILE FULL HOUSE 572R  
**RED SPITTALBURN MISSEY 824U**  
RED SPITTALBURN MS TOPPER 6055

RED VGW KING OF THE WEST  
RED NORSEMAN 1312 PJM  
O C C HUNTER 928H  
RED CROWFOOT KURUBA 2030M  
RED BCAR WILD CARD  
RED RSL DUCHESS 914L  
RED STEWART FRONT MAN 1N  
RED SIX MILE MISS TOPPER 91G

EPD	BW	WW	YW	Milk
1.4	41	84	30	

Perf	BW	Adj WW
79	602	

Consigned By: Eye Hill Stock Farm, Leeuwenburgh, Golden Sunset



314A was the focal point when we purchased a package of cows from Mike and Sandi Gray in the fall of 2018. Every visitor who sees her stops to appreciate her and she is the most asked about cow at the farm. In terms of phenotype to me she is an ideal cow and a foundation breeding piece. Most importantly her production record speaks for itself with very productive daughter/granddaughters in our herd, herd bulls for McAleer Ranching at Unity, Sk, and at Kenray ranch. She has a number of 2025 ET calves on the ground that are very exciting; including 94N in this sale. She is now a proven donor with extremely good results and is currently at DRI.

Selling right to one flush to be done in Jan/26. Guarantee of 6 #1 embryos with no top.





## 54 RED COCKBURN MS HAUCK 63H

Embryos | Reg# 2173557 | February 10 2020 | CWJ 63H

Sire

RED PIE ONE OF A KIND 352  
**RED COCKBURN EXCLUSIVE 207F**  
RED WILBAR CORA 443P

Dam

RED COCKBURN RIBEYE 308U  
**RED COCKBURN MS HAUCK 280Z**  
RED COCKBURN MS HAUCK 28N

RED BUF CRK THE RIGHT KINDU199  
RED PIE FAYETTE 1160  
RED TER-RON TORNADO 157M  
RED HEAD CORA 159L  
RED BAR-E-L RIBEYE 103R  
RED WILBAR CORA 443P  
RED T-S PATRIOT 84K  
RED COCKBURN MS HAUCK 27J

	BW	WW	YW	Milk		BW	Adj WW
EPD	3.2	52	90	35	Perf	86	

*Consigned By: Cockburn Red Angus*

Hauck 63H is one we are proud to have bred and raised. She is the 3rd generation of Hauck donor females with both her dam and maternal granddam. Throw in the influence of the immortal Cora 443P and you have the most potent producer to walk our pastures. Foot and udder quality, longevity, fertility, and consistency run deep. Her production record is hard to beat. Her first calf is a feature female working at Thiessen Land and Cattle, her second being the \$160,000 Premium 3059 bull, and third the \$45,000 Hauck 4014 heifer. Her set of Et and natural calves this year are phenomenal lead off by Bugatti 5008 who was the Grand Champion Red Angus bull at Brandon Ag Ex and will lead our bull sale next spring.



*Red SSS Moon Pie 680K, sire of embryos*



*Red Allison Abyss 58L, sire of embryos*

Moon Pie has been setting the Red Angus breed on fire. His semen has commanded up to \$4200 USD per dose. His first daughters to sell have sold for \$45,000 and \$47,500 USD. Sons topped our bull sale this past spring as well as Rohrich's and SSS. This mating would be full sibs to the \$45,000 Hauck 4014 heifer as well as Bugatti 5008 who you will hear much more from in the future.

Abyss was our \$39,000 pick from Allison's 2024 bull sale. We loved him for his extra capacity and performance and set him apart for us was his phenomenal dam. His first calf crop has not disappointed, sons are rugged and stout and his daughters are exactly what we hoped for.

FOB at Bovigen, Moose Jaw, Sk

A) 3 embryos by Moon Pie USA and Can qualified

B) 3 embryos Abyss Can qualified





Premium was the talk from his debut in the fall of 2023 right through to sale time where he commanded \$160,000 when selected by Leeuwenburgh Angus, Sandhill Reds and Cutting Edge Ranch. Premium is backed by a highly prolific, productive dam who offers up plenty of power but her soundness and beautiful udder are sure to play a big part in the success into the future. The first set of Premium calves have not disappointed as he adds, length and frame to stretch out the moderate cows. With 145 calves in his first calf crop they are impressive and sure to be highlights for the 2026 bull sales.

- A) 5 doses
- B) 5 doses
- C) 10 doses
- D) 10 doses
- E) 10 doses
- F) 10 doses

## 55 RED COCKBURN PREMIUM 3059

Semen | Reg# 2338813 | February 2 2023 | CWJ 59L

*Sire*

RED SVR TORNADO 167C  
**RED DURALTA 167 MOMENTUM 11H**  
RED DURALTA 275X MS JAN 78A

*Dam*

RED COCKBURN EXCLUSIVE 207F  
**RED COCKBURN MS HAUCK 63H**  
RED COCKBURN MS HAUCK 280Z

RED CROWFOOT 187X  
RED SVR CHRISTY 19U  
RED SIX MILE FIFTH GEAR 275X  
RED DURALTA 1N JAN 6R  
RED PIE ONE OF A KIND 352  
RED WILBAR CORA 443P  
RED COCKBURN RIBEYE 308U  
RED COCKBURN MS HAUCK 28N

EPD	BW	WW	YW	Milk	Perf	BW	Adj WW
5	63	105	25				

*Consigned By: Leeuwenburgh Angus, Sandhill Reds, Cutting Edge Ranch*

## 56

## SAV DENSITY 4336

Semen | Reg# 1266311 | IMP 4336P

FOB BOVIGEN MOOSE JAW, SK

*Consigned By: Eastondale Angus*

## 57

## SAV NET WORTH 4200

Semen | Reg# 1309743 | IMP 4200P

FOB BOVIGEN MOOSE JAW, SK

*Consigned By: Eastondale Angus*



### Lot 56 - SAV Density

- A) 2 straws sexed female
- B) 2 straws sexed female
- C) 5 straws conventional
- D) 5 straws conventional
- E) 5 straws conventional
- F) 3 straws conventional

### Lot 57 - SAV Net Worth

- A) 5 straws conventional
- B) 5 straws conventional
- C) 5 straws conventional
- D) 3 straws conventional





# Sale Notes



## TERMS AND CONDITIONS

1. **TERMS:** Unless otherwise previously arranged with an individual consignor, terms of this sale are cash payable in Canadian funds at the prevailing rate of exchange on the day of sale. All cattle may be held until the selling agent is satisfied that suitable arrangements for payment are made.
2. **IN THE CASE OF ILLNESS,** a veterinarian will be called by the Sales Manager if deemed necessary, but any expense involved will be the responsibility of the CONSIGNOR until the animal is sold and the PURCHASER thereafter.
3. **AS SOON AS AN ANIMAL IS SOLD,** it becomes the responsibility of the purchaser.
4. **BIDS:** Every animal entering the sale ring will be sold to the highest bidder. There will be no by-bidding by the owner or anyone authorized by him, however, the owner will be permitted one protective bid.
5. **DISPUTES:** In case of disputes, bidding will be reopened between the parties involved. If no further bid is made, the buyer will be the person from whom the auctioneer accepted the last bid. The auctioneer's decision in such matters will be final.
6. **ANNOUNCEMENTS:** Errors discovered in the catalogue will be corrected by announcements from the Auction Stand at sale time, and such corrections will take precedence over the printed matter in the catalogue.
7. **CERTIFICATE OF REGISTRY:** A CANADIAN certificate of registry duly transferred will be furnished to the buyer for each animal after settlement is made.
8. **SHIPPING:** Assistance will be given in making shipment after the sale, but no risk is assumed by the Castlerock Marketing or the seller. Expenses incurred are the responsibility of the purchaser. Purchasers are requested to furnish shipping instructions when making settlement.
9. **ACCIDENTS:** Although every precaution will be taken to protect the safety and comfort of the buyers, neither the Auction Market, the Sales Manager, nor any owner assumes any responsibility in this matter and disclaims any liability legal or otherwise in the event of accident or loss of property.
10. **LIABILITY:** Castlerock Marketing are acting as agents only and assume no responsibility for representations made by the seller. Purchasers must look to the seller for fulfillment of all guarantees and representations made by the seller.
11. **BREEDERS GUARANTEE:** The terms standard with the Canadian Angus Association shall apply. Beyond that: (a) All animals sold are guaranteed breeders. (b) All bred females have been declared safe in calf by a qualified veterinarian. Pregnant females are guaranteed pregnant a minimum of ninety (90) days. (c) All mature females raised a calf in this year. (d) All calendar year heifers are guaranteed open at time of sale. Any animal that has not proven itself a breeder within six months after the date of sale, if, in healthy condition, may be returned to seller at buyer's expense. The seller reserves the privilege of trying for a period of six months to prove the animal a breeder. The seller, at his option, may either return the purchase price to the buyer or replace the animal with another of equal value in full settlement and satisfaction of ALL claims. Any complaints regarding fertility of any animal in this sale shall be directed to the Contributor. All complaints regarding breeding difficulties must be reported in writing by the buyer to the seller within the time specified above and any animal returned must be free from disease and in good health. Any calendar year heifer calf shown and/or flushed by the purchaser is no longer guaranteed a breeder under this paragraph #11.
12. **INSURANCE:** Livestock insurance and/or transit insurance will be available. Insurance rep, Larry Toner, will be on-site Sale Day.
13. **TESTING:** All cattle will be held at sellers' expense until all necessary health requirements are met.





*Touch of*  
**CLASS** 2025