

DECEMBER

8-9

2025

**JJL
LIVESTOCK**

Opening the Herd
FEMALE SALE



Sale on DLMS Farmgate Timed Auctions, www.dlms.ca

SALE OPENS DECEMBER 8TH - CLOSEOUT DECEMBER 9TH

Welcome

JJL
LIVESTOCK

Jarret, Jenna, Ava & Cade Loveridge
Box 1333 Melville SK. S0A 2P0 / Jarret-306-730-7072 / Jenna 306-730-8478 / www.jjllivestock.com

The past few years have seen our heifer to bull ratio tip heavily in favour of heifers. It has left us with a young cow herd and the chance to share a larger group of females than we normally ever do. This will not be an annual event; it will be a rare opportunity to offer a group of females direct from the heart of our replacement pen.

For anyone who is unfamiliar with who we are Our farm was established in 2003 with the purchase of 20 Red Angus females from Jenna's family farm, Riverdale Stock Farm, Dale and Cathy Pillar. The majority of the females we have to this day stem back to those original cows and trace back to the Six Mile Red Angus cow herd. We found it fitting that our lot one female be a testament to that history. We calve around 50 registered Red Angus and Angus females each year. While we are not large in numbers, we are consistent and strong in quality. If our females don't work, they don't stay. When selecting our herd sires, we are critical of the mother cow behind the bull as well as the entire cow herd base they come from. Consistency and basic but necessary traits such as udder, foot and scrotal as well as fertility and milk quality are always a focus. We are also strict on temperament and when possible, we like to keep the dark red color and a black foot within our cow herd.

When you flip through this catalog you will find heifer calves show broke ready, bred heifers that will go on to establish themselves in any program, a proven herd sire ready to walk the pasture, and frozen genetics from our most prominent cow families and sires that are strictly unique to this offering.

From our family, thank you to everyone who has helped us prepare for this sale. From hosting the Saskatchewan Angus Summer Tour last July to running errands, loading cows and everything in between, we could never do this without the help and support of everyone we have around us. A huge thank you to our picture day crew, Ann, Tara & Mitchel. You guys are second to none!

Thank you for taking the time to view our offering. Years of breeding choices, relentless work and commitment follow in the pages of this catalog. Our operation is one of family, and together we have worked to bring you the very best of our program and we are excited to host you on December 8th and 9th, 2025. The cattle will be available for viewing and there will be food and hospitality both days. We hope that you can join us, however if you can't be here in person sale day, the cattle will be available for viewing at any time prior.

The sale will be run through DLMS Farm Gate format. Sale opening date will be December 8th and close out will be December 9th 7:00pm. Sale videos, updates and information will be posted on DLMS as well as our JJL Livestock Facebook page. For extra information on our program, you can visit www.jjllivestock.com.

If you have any questions, feel free to get in touch with either ourselves or the crew at Castlerock Marketing. We will be happy to assist you.

Jarret, Jenna, Ava & Cade Loveridge



JJL LIVESTOCK

Opening the Herd

FEMALE SALE



Online on DLMS Farmgate Timed Auctions, www.dlms.ca

SALE OPENS DECEMBER 8TH, 2025 - CLOSEOUT DECEMBER 9TH, 2025, 7PM CST

SALE PHONES

Jarret Loveridge.....306-730-7072
Jenna Loveridge.....306-730-8478

CASTLEROCK MARKETING

Shane Castle.....306-741-7485
Mark Forysth.....306-784-7844
Brennan Schachtel.....306-821-2504

Stockmans Insurance Larry Toner-306-834-7652, Dawne Toner-306-932-7322
Delivery We will assist in delivery options to central locations.

DLMS FARM GATE TIMED AUCTIONS

FARM GATE

Please note that ALL NEW bidders to DLMS Farm Gate Timed Auctions must create a new account to be able to bid on the timed sale. This account is separate from your regular DLMS.ca account.

TO CREATE NEW ACCOUNT

Click register on top right corner and fill in your account information. You will then need to login to verify your phone number, once completed, you should be ready to use the Farm Gate Auction system. If you are a returning Farm Gate Auction user, simply input your username and password to access.

TO BID

Once you enter the auction you will be able to find the lot(s) of interest to you. From there to place a bid you have two options:

- (1) Place next bid - you are simply placing the next bid on the item once you have reviewed the amount and agreed to the terms and conditions
- (2) Max Bid - this will allow you to set a max bid on the lot. Max Bids are private to the seller and allow you to set your maximum price on the lot. The computer will then keep you the highest bidder until your set amount. This is a great feature if you can't be next to the computer for the total duration of the sale. Once your maximum bid has been beat, the proxy will no longer be in place, you will need to login and bid again or reset your maximum bid.

You also can place the lot(s) of interest on a watchlist. To complete, when viewing the lot, there is an eye icon beside the bid button - select that eye icon - that will add the lot(s) to your personal watchlist for easy viewing.

Please ensure you are setting your "Out Bid" notifications to both your email and phone. To do so, select "My Account" on the top right of your screen, click on notifications, confirm you have check marks beside your email and phone notifications, then click save.

EXTENDED BIDDING FOR SALE CLOSEOUT

Race Horse style closeout - the entire sale will extend bidding. Any bid received after the close time will extend the sale by the time listed on the sale. This style of bidding allows the buyer to move across lots in the extended bidding and compete across multiple lots if desired. If no bidding occurs during that extended time, the computer will declare the sale finished.

CLOSEOUT/FOLLOW UP

Once the sale is complete, the seller will contact the purchaser to arrange for payment and discuss delivery, pickup, or shipping on your purchase. Please contact JJL Livestock with any questions. If you require more assistance with DLMS Farm Gate Timed Auctions, contact JJL Livestock or Mark Shologan at 780-699-5082





Shane & Tammy Castle 306.741.7485 | Mark Forsyth 306.784.7844
Chad Lorenz 403.896.9585 | Brennan Schachtel 306.821.2504
castlerock.mktg@sasktel.net | www.castlerockmarketing.com

WELCOME FROM CASTLEROCK

The JJL Opening the Herd is a truly unique opportunity to access genetics that are otherwise not available from JJL Livestock! Jarret, Jenna, Ava and Cade put on an outstanding display on the popular Saskatchewan Angus Association Summer Tour that happens annually, hats off to all that organized the tour. One could not help but be impressed by the display of cattle that JJL put forth, people were buzzing immediately upon walking into the pasture with the big, soggy calves on an already impressive set of cows raising these calves. From the bred heifers on display to the herdbulls one can not help but be impressed with the cattle. Not a large herd in numbers but as the saying goes, quality over quantity and JJL Livestock is a prime example of that! This day and age we have numerous "tools" that are available to breeders to assist them in moving their herd "forward" I'm here to tell you that nothing will replace stockmanship, strict culling with no tolerance to the cattle that can't cut it. If you know the Loveridge family you already know there's no room for BS, things are very matter of fact and in this day and age I think this needs to be applauded. The intense drive to make things better and the cattle needing to be right has earned respect from breeders across this continent when it comes to the JJL cowherd. A goal driven family that works hard to achieve cattle that are next level good. A family operation in which they all contribute towards the success established today.

We are excited to work with a great offering of genetics that will make a positive impact and look forward to any questions you may have. We will be at JJL for the closeout so be sure to reach out to us if we can help!

See you sale day!

Shane Castle





RED JIL FANNY 520N

1

Sire

RED WHEEL STARK 67G
RED SIX MILE COLD OPEN 82K
RED SIX MILE PATSY 947E

BLACK WHEEL DRACARYS 178E
RED WHEEL ROSE 66C
PEAK DOT ELIMINATOR 100Z
RED SIX MILE PATSY 550B

Dam

RED U-2 RECKONING 149A
RED SIX MILE FANNY 149D
RED SIX MILE FANNY 526X

RED U-2 RECON 192Y
RED U-2 ANEXA 271Y
RED 6 MILE FULL THROTTLE 171T
RED SIX MILE FANNY 846M

2445887 / JIL 520N / January 15 2025

Act BW	CE	BW	WW	YW	MCE	Milk
84	-1.5	2.4	57	105	5.5	31

This Female is the result of an embryo purchase from the great Six Mile Red Angus Program. She is exactly what we anticipated from the Cold Open x Fanny mating. She has the performance to stand at the top of the group, the presence to be a phenomenal show female and the phenotype, foot and udder structure to make one very exceptional cow. Juniors take note this heifer has all the right pieces & power to stand up with the best of them on show day.



Sire



Dam



RED JIL KIT 528N

2

Sire

RED DAHLKE ROCKEFELLER 009H
RED NU-HORIZON ROCKER 339L
RED ACC BONITA 34C

RED 5L BOURNE 117-48A
RED DAHLKE MS HILTON 13F
RED WPRA LEGACY A-314
RED ANDERSON'S BONITA 71P

Dam

RED NRA ROCK 31H
RED JIL KIT 35L
RED JIL KIT 46F

RED T-K X-FACTOR 162F
RED WRAZ FOXY LADY 61B
RED FLYING K MAX 110C
RED JIL KIT 155D

This heifer calf may just be the perfect combination of performance & femininity. She is dark Cherry Red, broad made and strong footed. Expect some power out of this female from the sire side and loads of maternal greatness from the Kit cow family bottom side. The Kit cows are well known here for their eye appeal, strong udder structure and longevity.

2416064 / JIL 528N / January 22 2025

Act BW	CE	BW	WW	YW	MCE	Milk
88	-4	3.2	45	80	1	26



Sire



Dam



JJL MS BLACK DYNAMIC 554N

3

Sire

RED JRA ESCALADE 76A
RED FLYING K ESCALADE 116J
RED FLYING K CHARITY 218C

Dam

RED LIBERTY 272C
JJL MS BLACK DYNAMIC 67F
JJL MS BLACK DYNAMIC 1W

RED TR ESCALADE 318T
RED SHODEREE DUCHESS 88R
RED TONGUE RIVER JESSE AT385
RED FLYING K LANA 1A
JJL TRACTION 70Z
LLR NEW TREND 878 LOUISE 11U
S A V FINAL ANSWER 0035
RED RIVERDALE MS 3P

2426232 / JJL 554N / April 19 2025

Act BW	CE	BW	WW	YW	MCE	Milk
78	1	1.9	47	79	-2	28

Many, many years back a female by the name of Red PFRA MS High Mark 148K was purchased by my family from the Manitoba Magic Sale. I spent a number of years trying to find a way to acquire a daughter of this female from my parents and it finally happened in the form of Red Riverdale MS 3P, and what a cow family she started! The Dam to this heifer, JJL MS Black Dynamic 67F, is a knockout! She is easy to find and hard to forget. Her daughters always follow suit and this calf is no exception. She carries the feminine style we have come to expect from the Dynamic cow family but don't be fooled, they have the performance to bring in a herd bull every time. An added bonus, she is naturally easy going and gentle natured making her a pleasure to work with.



Maternal Sibling



Maternal Sibling



Maternal Sibling



Maternal Sibling



Dam



Maternal Sibling



RED J.J.L MATI 404M

4

Sire

RED LINES MC TWISTER 25G
RED J.J.L IMAGE 35K
J.J.L MS BLACK DYNAMIC 67F

Dam

RED WHEEL LANDSLIDE 90F
RED J.J.L MATI 26H
RED J.J.L MATI 13E

RED LAZY MC TWISTER 154A
RED LINES SUE 15Y
RED LIBERTY 272C
J.J.L MS BLACK DYNAMIC 1W
RED U-2 UNANIMOUS 113B
RED WHEEL AUBURN 76T
RED WHEEL JACK 80A
J.J.L MATI 72Z

2355353 / J.J.L 404M / January 05 2024

Act BW	CE	BW	WW	YW	MCE	Milk
60	-4.5	3.9	43	78	0	25

Such a good female. Everything about this heifer is big time. She is the type that stands out in a crowd and was a popular find on the Saskatchewan Angus Summer Tour this past July. The Mati cow family is one that does not waver no matter what the cross. They carry power while maintaining calving ease, soundness and longevity. If you like her for her type, you will love her for her easy-going nature. A maternal sister to this female sold to Blair.Ag and Jackson Cattle Co.

Observed bred May 1/2025 (February 7/2026) to Red Flying K Finished Product 107M. Pasture Exposed Red Flying K Finished Product 107M April 10-September 10/2025



Sire



Dam



Maternal Sibling



JJL PRINCESS 403M

5

Sire

RED LINES MC TWISTER 25G
RED JJL IMAGE 35K
JJL MS BLACK DYNAMIC 67F

Dam

RED RINGSTEAD KARGO 215U
JJL PRINCESS 82G
JJL PRINCESS 4W

RED LAZY MC TWISTER 154A
RED LINES SUE 15Y
RED LIBERTY 272C
JJL MS BLACK DYNAMIC 1W
RED RINGSTEAD KARGO 107M
RED RINGSTEAD MS EQUAL 589P
S A V FINAL ANSWER 0035
RED RIVERDALE PRINCESS 7P

2355559 / JJL 403M / January 04 2024

Act BW	CE	BW	WW	YW	MCE	Milk
90	0	4	47	77	6	28

A female that comes to the top of our picks for her broodiness, mass and type. Her Dam was lost early to injury, but not before she had a chance to leave her mark here. She raised two exceptional maternal brothers and a maternal sister who has risen to fill her shoes here as one of our top females. This heifer has some added growth and performance in her from her sire, Red JJL Image 35K. He is a son of our highly regarded MS Black Dynamic 67F matron and Red Lines Twister 25G, a bull we picked up from Boyd Lines a few years back. You cannot go wrong choosing two of our most sought-after cow families in one female.

Full sib embryos to this females Dam sell as lot 19 (a)

Observed bred April 27/2025 (February 3/2026) to Red Flying K Finished Product 107M. Pasture Exposed Red Flying K Finished Product 107M April 10-September 10/2025



Sire



Maternal Sibling



Maternal Sibling



RED JIL FANCY 411M

6

Sire

RED JRA ESCALADE 76A
RED FLYING K ESCALADE 116J
RED FLYING K CHARITY 218C

Dam

S A V 004 DENSITY 4336
JIL FANCY 9A
RED RIVERDALE FANCY 5S

RED TR ESCALADE 318T
RED SHODEREE DUCHESS 88R
RED TONGUE RIVER JESSE AT385
RED FLYING K LANA 1A
S A V 8180 TRAVELER 004
S A V MAY 7238
RED RIVERDALE BOOM 488M
RED RIVERDALE ANN 571N

2355356 / JIL 411M / January 10 2024

Act BW	CE	BW	WW	YW	MCE	Milk
94	0	3.4	40	72	-6	25

Some cattle come into this game just a little bit above the others, JIL Fancy 9A is one of those females. Her track record is staggeringly impressive here and at the age of twelve she still graces our pastures. No surprise she brought one of the best bull calves in the pen again this fall and is bred back early. This bred heifer is extremely hard to part with and having a full sister both allows and hinders our decision to sell her. She is dark cherry red, has a solid black foot and is bred early to our new herd sire, Red Flying K Finished Product 107M. Her first calf should result in a trip to the bank to gather your ROI and then some.

Maternal sib embryos sell as lot 18

Observed bred April 17/2025 to Red Flying K Finished Product 107M (favourable) Due date January 24/2026. Pasture Exposed Red Flying K Finished Product 107M April 10-September 10/2025



Sire



Dam



Full Sister



Soft, soggy and cowy, you will find her in the crowd! The Miss Deal Cow family is arguably our most consistent and predictable group of females. They are the type to bring in a calf twice their size, breed back early and gain body condition while doing it. Throughout the years this cow family has been responsible for a large majority of our select sale females, herd bulls and top of the pen picks. Expect this female to turn around and raise you a herd bull and start a cow family that will be a building block in your herd for years to come.

Observed bred May 14/2025 to Red Flying K Finished Product 107M (favourable) Due date Feb 20/2026. Pasture Exposed Red Flying K Finished Product 107M April 10-September 10/2025



Sire



RED J.J.L. MISS DEAL 401M

7

Sire

RED T-K X-FACTOR 162F

RED NRA ROCK 31H

RED WRAZ FOXY LADY 61B

RED FLYING K MAX 153Y

Daughter

RED J.J.L. MISS DEAL 53J

RED J.J.L. MISS DEAL 128D

RED KBJ ROCK 983D

RED T-K ANGIE 31Z

RED YY HITCH 23X

RED WRAZ FOXY LADY 220Z

RED ML MAX 862U

RED FLYING K LASSIE 37S

RED WHEEL JACK 80A

RED J.J.L. MISS DEAL 65Z

2355351 / J.J.L. 401M / January 01 2024

Act BW	CE	BW	WW	YW	MCE	Milk
68	8	-1.3	41	70	7	22



RED J.J.L. TINSEL 422M

8

Sire

RED T-K X-FACTOR 162F

RED NRA ROCK 31H

RED WRAZ FOXY LADY 61B

XO CROWFOOT 0102X

Daughter

WCF CROWFOOT 0102X TINSEL 39C

RED WCF MUL 26P TINSEL 60W

RED KBJ ROCK 983D

RED T-K ANGIE 31Z

RED YY HITCH 23X

RED WRAZ FOXY LADY 220Z

RED CROWFOOT MOONSHINE 8081U

XO CROWFOOT BLACKBIRD 8810U

RED FINE LINE MULBERRY 26P

RED BRYLOR KLE TINSEL 211N

2428174 / J.J.L. 422M / January 22 2024

Act BW	CE	BW	WW	YW	MCE	Milk
72	6	-0.7	39	64	9	25

Dive into some fresh genetics with this female! We purchased Tinsel 39C from the Wraz Red Angus Dispersal a few years ago and she came through with this tank of a female! The Red NRA Rock daughters are proving to be some of our favorite up and coming cows. They are moderate in frame but powerful in progeny. This female will be exactly that.

Observed bred April 15/2025 to Red Flying K Finished Product 107M (favourable) Due date January 22/2026. Pasture Exposed Red Flying K Finished Product 107M April 10-September 10/2025



Sire



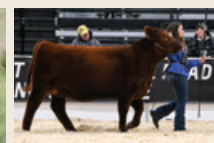


If there is one we should be keeping to continue to build a new cow family, this is her. We purchased her Dam, Blake's MS Gravity 102H, from the great family at Blake's Red Angus. She surpassed our expectations with her moderate birth calves, ideal growth and extremely strong structure and udder quality. We continually have customers that ask us for that "ideal" bull; moderate at birth, easy calving with the ability to grow and last. This is the female that will get that done.

Observed bred May 11/2025 to Red Flying K Finished Product 107M (favourable) Due date Feb 17/2026. Pasture Exposed Red Flying K Finished Product 107M April 10-September 10/2025



Dam



Maternal Sister



JjL MS GRAVITY 428M

9

Sire

RED T-K X-FACTOR 162F

RED NRA ROCK 31H

RED WRAZ FOXY LADY 61B

Dam

YOUNG DALE HI DEFINITION 185B

BLAKE'S MS GRAVITY 102H RC

BLAKE'S MS GRAVITY 43D

RED KBJ ROCK 983D

RED T-K ANGIE 31Z

RED YY HITCH 23X

RED WRAZ FOXY LADY 220Z

PF HOOVER DAM 041

BLACK HAMCO COUNTESS 417T

NORTHERN VIEW SMW GUSTOV 3Z

RED BLAKE'S MS GRAVITY 4Z

2356322 / JjL 428M / January 27 2024

Act BW	CE	BW	WW	YW	MCE	Milk
72	7	-0.3	39	74	8	20



RED JjL KIT 433M

10

Sire

RED JRA ESCALADE 76A

RED FLYING K ESCALADE 116J

RED FLYING K CHARITY 218C

Dam

RED FLYING K MAX 110C

RED JjL KIT 46F

RED JjL KIT 155D

RED TR ESCALADE 318T

RED SHODEREE DUCHESS 88R

RED TONGUE RIVER JESSE AT385

RED FLYING K LANA 1A

RED ML MAX 862U

RED FLYING K ANITA 782T

RED JjL FINAL DEAL 78Z

RED RIVERDALE KIT 308S

2356149 / JjL 433M / February 06 2024

Act BW	CE	BW	WW	YW	MCE	Milk
72	9	-1.8	26	51	2	22

Not having a photo of this heifers Dam is criminal! Getting one next summer rose to the top of my to do list when I realized we didn't have one. Red JjL Kit 46F is flawless. A typical Red Flying K Max 110C daughter and the reason we will continue to use him by ai every year. Very limited semen will be sold on him in this sale, grab it while you can! This heifer is worth a double take. Moderate in her makeup, long lasting in her genetics. Expect moderate birth, structural strength and one solid little female. You'll want to mark this one high on your list.

Observed bred May 15/2025 to Red Flying K Finished Product 107M (favourable) Due date Feb 21/2026. Pasture Exposed Red Flying K Finished Product 107M April 10-September 10/2025



10



Maternal Sister



Sire



Another piece of the JLL Fancy 9A puzzle here. This female is very close in pedigree to the Lot 7 female. Her Dam, JLL Fancy 12K, is a hard working Red Lines Twister 25G daughter we really like. This heifer is solid from top to bottom and is hard to fault. She has a great foot and heel under her and is shaping up to have a beautiful udder. This heifer is stacked with potential and she is one we think very highly of.

Observed bred May 5/2025 to Red Flying K Finished Product 107M (favourable) Due date February 11/2026. Pasture Exposed Red Flying K Finished Product 107M April 10-September 10/2025



Sire



Maternal Granddam



RED JLL FANCY 437M

11

Sire

RED JRA ESCALADE 76A
RED FLYING K ESCALADE 116J
RED FLYING K CHARITY 218C

Dam

RED LINES MC TWISTER 25G
JLL FANCY 12K
JLL FANCY 9A

RED TR ESCALADE 318T
RED SHODEREE DUCHESS 88R
RED TONGUE RIVER JESSE AT385
RED FLYING K LANA 1A
RED LAZY MC TWISTER 154A
RED LINES SUE 15Y
S A V 004 DENSITY 4336
RED RIVERDALE FANCY 5S

2356155 / JLL 437M / February 12 2024

Act BW	CE	BW	WW	YW	MCE	Milk
85	-1	3.3	42	76	-4	25



RED JLL MISS DEAL 440M

12

Sire

RED JRA ESCALADE 76A
RED FLYING K ESCALADE 116J
RED FLYING K CHARITY 218C

Dam

RED LAZY MC TRADITION 111C
RED JLL MISS DEAL 16E
RED JLL MISS DEAL 4A

RED TR ESCALADE 318T
RED SHODEREE DUCHESS 88R
RED TONGUE RIVER JESSE AT385
RED FLYING K LANA 1A
RED WPRA LEGACY A-314
RED LAZY MC FIREFLY 78R
RED DMM GLESBAR BARNDANCE 35X
RED JLL MISS DEAL 6W

2356147 / JLL 440M / February 14 2024

Act BW	CE	BW	WW	YW	MCE	Milk
87	-2	2.5	39	67	-5	24

A maternal sister to this female happened to be Cade's favorite a few years back. He swindled a deal to own her and she went on to provide him enough funds to purchase his snowmobile on her first calf. Her first bull calf was the talk of the Saskatchewan Angus Summer Tour this past July and was sold as second pick of the pen this fall. The Miss Deal cow family is a stock you can bet the farm on and this female will get the work done. Dark cherry red and an exceptional udder shaping up for an early February calf to Red Flying K Finished Product 107M.

Observed bred April 26/2025 to Red Flying K Finished Product 107M (favourable) Due date Feb 2/2026. Pasture Exposed Red Flying K Finished Product 107M April 10-September 10/2025



Maternal Sister



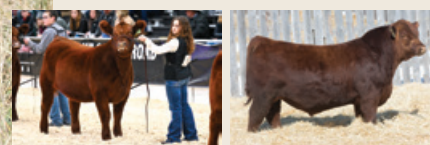
Sire





One of the youngest bred heifers in the offering. This heifer ties together two of our strongest cow families. A Fancy and Miss Deal pedigree with a little Red Flying K Max 110C in there for good measure. Her Dam was in our 2022 show string and has grown into an ideal young up and coming cow. This female is moderate in type but we really appreciate her correctness, structure and capacity. Her pedigree says performance, so don't be surprised if she brings in a calf twice her size come fall.

Observed bred April 15/2025 to Red Flying K Finished Product 107M (favourable) Due date Jan 22/2026. Pasture Exposed Red Flying K Finished Product 107M April 10-September 10/2025



Dam

Sire



RED JJL FANCY 447M

13

Sire

RED NRA ROCK 31H
RED JJL COOL HAND 19K
JJL MISS DESIGN 41H

Dam

RED JJL ENERGIZER 1H
RED JJL FANCY 22K
JJL FANCY 79G

RED T-K X-FACTOR 162F
RED WRAX FOXY LADY 61B
RED WHEEL LANDSLIDE 90F
JJL FINAL DESIGN 3W
RED T-K ENERGIZER 13T
RED JJL MISS DEAL 4A
RED FLYING K MAX 110C
JJL FANCY 9A

2356156 / JJL 447M / March 06 2024

Act BW	CE	BW	WW	YW	MCE	Milk
81	0	2.2	43	74	-2.5	26



RED JJL ANN 448M

14

Sire

RED JRA ESCALADE 76A
RED FLYING K ESCALADE 116J
RED FLYING K CHARITY 218C

Dam

RED NRA ROCK 31H
RED JJL ANN 17K
RED JJL ANN 18H

RED TR ESCALADE 318T
RED SHODEREE DUCHESS 88R
RED TONGUE RIVER JESSE AT385
RED FLYING K LANA 1A
RED T-K X-FACTOR 162F
RED WRAX FOXY LADY 61B
RED WHEEL LANDSLIDE 90F
RED JJL ANN 21A

2356159 / CJC 448M / March 22 2024

Act BW	CE	BW	WW	YW	MCE	Milk
80	-2	1	35	65	-5	25

"Annie" as she is affectionately known as is a moderate made powerhouse! This Dark Red female will catch you eye and then your attention. Set aside her moderate frame size, this female will bring in a herd bull every year. She is broad from her skull shape to her topline and everywhere in between. The Ann cow family has covered its fair share of success and it is not often we let one go, limitless potential in this female.

Observed bred April 14/2025 to Red Flying K Finished Product 107M (favourable) Due date Jan 21/2026. Pasture Exposed Red Flying K Finished Product 107M April 10-September 10/2025



Maternal Granddam



Sire



JjL ERICA 430M

15

Sire

MEAD MAGNITUDE
S A V MAGNUM 1335
S A V EMBLYNETTE 9023

Dam

BROOKING FIREBRAND 6068
JjL ERICA 63J
BAR-E-L ERICA 74A

K C F BENNETT SOUTHSIDE
MEAD PRIMROSE N198
LD CAPITALIST 316
S A V EMBLYNETTE 7505
BROOKING BANK NOTE 4040
BROOKING ANNIE K 390
BAR-E-L NATURAL LAW 52Y
HF ERICA 339T

2362134 / JjL 430M / February 03 2024

Act BW	CE	BW	WW	YW	MCE	Milk
84	5	1.9	78	135	13.5	29

The only straight black pedigree on offer and she is worthy of a cover. We wanted to offer our best, and this female sits high up there with the 'we should keep her' club. Her Dam, JjL Erica 63J, has proven consistent with every cross we have given her, being a young female herself, we decided to let this daughter go. She is as easy keeping as they come, has a beautiful udder dropping for a mid-January calf to Schwan Journeyman 3026. No guesswork here, we all know what the Erica's can do and this female will be exceptional. Watch for her full sister selling from Blairs.Ag in the Opportunity Knocks Sale December 15/2025!

Observed bred April 15/2025 to Schwan Journeyman 3026 (favourable)
Due date January 22/2026. Pasture Exposed to Schwan Journeyman 3026
April 7-July 15/2025



Dam



Full Sibling - Blair's 63J Erica 505N



Maternal Brother



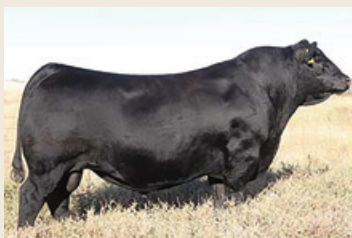
Maternal Sister



Maternal Sister



Service Sire



Sire



Maternal Sister

JjL LIVESTOCK *Opening the Herd* FEMALE SALE



RED NRA ROCK 3iH

16

Sire

RED KBJ ROCK 983D
RED T-K X-FACTOR 162F
RED T-K ANGIE 31Z

RED U-2 ROCK SOLID 165A
RED KBJ LASSIE 1080A
RED BAR-E-L WARDEN 144W
RED BWB ANGIE 98P

Daughter

RED YY HITCH 23X
RED WRAZ FOXY LADY 61B
RED WRAZ FOXY LADY 220Z

RED YY HITCH 514R
CROWFOOT PRIDE 5923R
RED OLE KNIGHT 211W
RED BRYLOR FOXYLADY 13M

2191330 / NRA 31H / January 23 2020

Act BW	CE	BW	WW	YW	MCE	Milk
82	5	-1	36	63	5	25

This bull has been our go to for many years. He did an exceptional job as a yearling and two year old on heifers and graduated to the main cow herd where he has been used every year since without hesitation. He keeps birth weight in check, his bull calves average 84lbs his daughters average 77lbs at birth. At the age of five he maintains his exceptional foot and heel, ample scrotal and an easy going personality all of which he has passed down to his progeny over the years. His daughters are moderate and hard working females with tidy udders and perfect teat size. An opportunity here to purchase a herd sire in his prime with no guesswork required, he is solid as a "Rock".



Son



Son



Son



Son



Daughter



Daughter



Daughter



Embryo Package
JIL FANCY 11H X **COCKBURN PREMIUM 3059**

17

RED WHEEL LANDSLIDE 90F
RED JIL FANCY 11H
 RED JIL FANCY 37E

RED DURALTA 167 MOMENTUM 11H
RED COCKBURN PREMIUM 3059
 RED COCKBURN MS HAUCK 63H

Dam Registration # 2151393 Sire Registration # 2338813

This female has absolutely rocketed to the top of our program. She has given us two stellar daughters; one is working for Rocky Top Farms in Kansas one has been retained in our herd. Her son, Red JIL Copper 425M sold to Dave Valnes of South Dakota last fall in the All Star Angus Sale at Canadian Western Agribition and another full brother is working for a great friend and

customer, Sheldon Wolfe, at Grenfell Sk. Her Grandam, JIL Fancy 9A, has been featured throughout this offering and it is easy to see the ripple effect she has had within our program. Top side you will find Red Wheel Landslide 90F. His daughters are some of our most valued females, no surprise there tracing back to the great Auburn cow family at Wheeler's Stock Farm. Now throw in Red Cockburn Premium 3059, the \$160,000.00 powerhouse sire. Limitless potential here. We wanted to offer our very best and these embryos might just be the absolute trump card of the offering.

Offering two conventional embryos. Collected and stored at Earl Grey Veterinary Services. Guarantee one ninety day pregnancy if implanted by a certified technician. Canadian Qualified.



Son



Daughter



Son



Dam

JJL FANCY 9A

SAV004 DENSITY 4336

RED RIVERDALE FANCY 5S

Embryo Package

JJL FANCY 9A X FLYING K MAX 110C

Sire

RED FLYING K MAX 110C

RED ML MAX 862U

RED FLYING K ANITA 782T

18

A female that has been an anchor to our program and a sire that has left his impact through his flawless daughters. This mating is timeless. JJL Fancy 9A raises one of our top calves each and every year and breeds back never missing a beat. She has done so for twelve years and counting. And her calves can do it too. The progeny from this mating whether they be sons or daughters, will be the kind you build a program around.

Dam Registration # 1722617 Sire Registration # 1869684

Offering two conventional embryos. Collected by and Stored at Bow Valley Genetics. Guarantee one ninety day pregnancy if implanted by a certified technician. Canadian Qualified.



Full Sibling to Embryos



Daughter



Daughter



Son




Dam
JJL PRINCESS 4W
 RED RIVERDALE PRINCESS 7P

Embryo Package
JJL PRINCESS 4W X RINGSTEAD KARGO 2I5U
Sire
RED RINGSTEAD KARGO 215U
 RED RINGSTEAD MS EQUAL 589P

19A

Red Riverdale Princess 7P was Jarret's pick of the Riverdale Stockfarm replacement pen back in 2004 and what a cow she became. The effects of her most prominent daughter, JJL Princess 4W, can be felt not only within our own cow herd but throughout the entire industry. She has become a household name in the Red Angus breed throughout Canada and the USA based on the success of her progeny. Expect impeccable foot structure, udder quality, performance and docility from this cow family and these matings.


Dam
JJL PRINCESS 4W
 RED RIVERDALE PRINCESS 7P

JJL PRINCESS 4W X PRIME RIB 4II
Sire
RED GEIS PRIME RIB 411
 RED GEIS KURUBA 5'92

19B

Dam Registration # 1495826 Sire Registration # 785239

Offering 3 conventional emBow Valley Genetics. Guarantee one ninety day pregnancy if implanted by a certified technician. Canadian Qualified.



Son



Daughter



Son



Son



Semen Packages

RED FLYING K MAX 110C

20



Sire

RED CROWFOOT 6253S
RED ML MAX 862U
RED BAR-X MISS LINETT 151K

Daughter

RED FLYING K ACE 9R
RED FLYING K ANITA 782T
RED FLYING K PEGGY 154N

CROWFOOT MAX 1743L
CROWFOOT PIED PIPER 3859N
RED BECKTON CLIPPER D225 JM
RED BAR-X MISS LINETT 284D
RED FLYING K PATRICK 29N
RED FLYING K MS DYNAMO 91H
RED PRICELESS 9007
RED FLYING K PEPPER 70L

1869684 / FKR 110C / February 28 2015

Act BW	CE	BW	WW	YW	MCE	Milk
86	10	-2	46	89	7	26

Selling two semen packages: Lot 20A - 5 Straws, Lot 20B - 5 Straws

If you have not yet had the privilege to use a "Max" in your herd this bull is a perfect opportunity. The Max line does absolutely everything right. This bull has been our go to for high vigor at birth & no non sense calving ease. He has become an asset here for his phenotypically correct, feminine females that are soft made and perfect uddered. His sons are highly sought after and carry style, ample testicle and an exceptional calving ease to high yearling weight ability. This semen will not be offered often in the future, rare opportunity to get your hands on some here.

Semen collected and stored at Alta Genetics. Canadian Qualified.



Daughter



Daughter



Daughter



Daughter



Son



Semen Packages RED JJL DUKE 115D

21

Selling five semen packages: Lot 21A - 10 Straws, Lot 21B - 10 Straws, Lot 21C - 10 Straws, Lot 21D - 10 Straws, Lot 21E - 10 Straws

If you are looking to build a group of powerhouse females or put some performance into the bull pen, this is your opportunity. Red JJL Duke 115D has left his mark here and will continue to do so for many years to come. His daughters are massively impressive, yet functional and practical cows that can get the job done. His sons rise to the top of the pen for their growth, performance and consistently above average scrotal. He throws them dark red, hairy and solid footed all backed by one of our absolute best cows. You can't go wrong, the bases are covered with this bull.

Semen collected and stored at Bow Valley Genetics. Canadian Qualified.



Sire

RED DIMLER JACK 25T
RED WHEEL JACK 80A
RED WHEEL HICK CHICK 7T

RED DRYFORK K-C PRECISELY JACK
RED DIMLER QUEEN 414P
RED WHEEL INFRARED 29R
RED WHEEL ANNE 80R

Dam

S A V FINAL ANSWER 0035
JJL PRINCESS 4W
RED RIVERDALE PRINCESS 7P

SITZ TRAVELER 8180
S A V EMULOUS 8145
RED SOO LINE HERCULES 12M
RED RIVERDALE PRINCESS 492M

1902138 / JJL 115D / January 02 2016

Act BW	CE	BW	WW	YW	MCE	Milk
98	-8	5.2	47	82	-6	16



Daughter



Son



Daughter



Dam



Feet of 115D

JJL LIVESTOCK *Opening the Herd* FEMALE SALE



Red Flying K Finished Product 107M

Service Sire

Our newest herd sire and service sire to all of the Red Angus Females in our offering. Over the years we have used many Flying K sires, all of them have excelled on our females. Finished Product was selected to use on our bred heifers for a no-nonsense calving ease option. He has the shape, style and presence to him that you will pick out from across the pasture a solid black foot and that dark cherry red color everyone loves.



RED FLYING K FIN. PRODUCT 107M

Sire

COLLIER FINAL PRODUCT B389
RED COLLIER FINISHED PRODUCT
COLLIER AMY B385

Dam

RED C JACOBSON TOP GUN 9061
RED FLYING K JALEN 276K
FLYING K JULIA 200H

CONNELLY FINAL PRODUCT
ANDRAS AMY B121
HOOVER DAM
ANDRAS AMY B121

RED 5L TOPGUN 560-65B
RED JACOBSON QUEEN 7264
RED TAYLOR'S KODIAK 40D
FLYING K CHARITY 25E

2389904 / FKR 107M / February 24 2024

Act BW	CE	BW	WW	YW	MCE	Milk
71	8	-1.1	47	83	9	23



SCHWAN JOURNEYMAN 3026

Sire

S A V RENOVATION 6822
SCHWAN JOURNEYMAN 911G
BROOKING ROSE 201

Dam

JL KELLY 2232
JL LADY 5196
JL LADY 0116

S A V RENOWN 3439
S A V MADAME PRIDE 0151
SOO LINE MOTIVE 9016
E A ROSE 918

S A V ELIMINATOR 9105
S A V ROSETTA 8516
S A V CARBON COPY 7664
JL LADY 06 43

2316704 / TYS 26L / January 17 2023

Act BW	CE	BW	WW	YW	MCE	Milk
78	9	-0.1	49	87	7	28

Service Sire

While he is the service sire to only one female in this sale, we have a pen of bulls sired by him that can help determine the value of that mating. This bull will be a large part of our program moving forward. He gave us only bull calves in his first set of offspring which I'm told his sire is also notorious for. He will definitely be seeing a larger group of cows this spring to see if we can't stir up some daughters that look exactly like his flawless Dam, JL Lady 5196.



Schwan Journeyman 3026

HERD HEALTH

Our calves are annually vaccinated with Bovi-Shield Gold, Ultrabac 7, Ivomec and Multimin 90. All bred heifers have received their first shot of Bovilis Guardian Scour Vaccine, Vira Shield 6 and Ivomec. Heifer calves have been palpated and examined by a certified veterinarian and verified open and viable for breeding. Herd bull will be semen tested and guaranteed prior to sale day.

TERMS AND CONDITIONS

1. TERMS: Unless otherwise previously arranged with an individual consignor, terms of this sale are cash payable in Canadian funds at the prevailing rate of exchange on the day of sale. All cattle may be held until the selling agent is satisfied that suitable arrangements for payment are made.

2. IN THE CASE OF ILLNESS, a veterinarian will be called by the Sales Manager if deemed necessary, but any expense involved will be the responsibility of the CONSIGNOR until the animal is sold and the PURCHASER thereafter.

3. AS SOON AS AN ANIMAL IS SOLD, it becomes the responsibility of the purchaser.

4. BIDS: Every animal entering the sale ring will be sold to the highest bidder. There will be no by-bidding by the owner or anyone authorized by him, however, the owner will be permitted one protective bid.

5. DISPUTES: In case of disputes, bidding will be reopened between the parties involved. If no further bid is made, the buyer will be the person from whom the auctioneer accepted the last bid. The auctioneer's decision in such matters will be final.

6. ANNOUNCEMENTS: Errors discovered in the catalogue will be corrected by announcements from the Auction Stand at sale time, and such corrections will take precedence over the printed matter in the catalogue.

7. CERTIFICATE OF REGISTRY: A CANADIAN certificate of registry duly transferred will be furnished to the buyer for each animal after settlement is made.

8. SHIPPING: Assistance will be given in making shipment after the sale, but no risk is assumed by the Castlerock Marketing or the seller. Expenses incurred are the responsibility of the purchaser. Purchasers are requested to furnish shipping instructions when making settlement.

9 ACCIDENTS: Although every precaution will be taken to protect the safety and comfort of the buyers, neither the Auction Market, the Sales Manager, nor any owner assumes any responsibility in this matter and disclaims any liability legal or otherwise in the event of accident or loss of property.

10. LIABILITY: Castlerock Marketing are acting as agents only and assume no responsibility for representations made by the seller. Purchasers must look to the seller for fulfillment of all guarantees and representations made by the seller.

11. BREEDERS GUARANTEE: The terms standard with the Canadian Angus Association shall apply. Beyond that: (a) All animals sold are guaranteed breeders. (b) All bred females have been declared safe in calf by a qualified veterinarian. Pregnant females are guaranteed pregnant a minimum of ninety (90) days. (c) All mature females raised a calf in this year. (d) All calendar year heifers are guaranteed open at time of sale. Any animal that has not proven itself a breeder within six months after the date of sale, if, in healthy condition, may be returned to seller at buyer's expense. The seller reserves the privilege of trying for a period of six months to prove the animal a breeder. The seller, at his option, may either return the purchase price to the buyer or replace the animal with another of equal value in full settlement and satisfaction of ALL claims. Any complaints regarding fertility of any animal in this sale shall be directed to the Contributor. All complaints regarding breeding difficulties must be reported in writing by the buyer to the seller within the time specified above and any animal returned must be free from disease and in good health. Any calendar year heifer calf shown and/or flushed by the purchaser is no longer guaranteed a breeder under this paragraph #11.

12. INSURANCE: Livestock insurance and/or transit insurance will be available. Insurance rep, Larry Toner, will be on-site Sale Day.

13. TESTING: All cattle will be held at sellers' expense until all necessary health requirements are met.



JJL LIVESTOCK *Opening the Herd* FEMALE SALE