

**B
A**



Belvin Angus Twelfth Annual

MARCH 5, 2024 AT THE FARM, INNISFAIL, ALBERTA

BULL SALE

MAY
BELVIN-ANGUS
55L

WELCOME TO OUR 12TH ANNUAL BULL SALE



Welcome to the 2024 Belvin Angus Bull and Female Sale. Its hard to believe this is the 45th year raising purebred Angus cattle for our family. We are all fortunate to have spent our lives in this industry and with this breed. The past year has brought an amazing run of prices to the cattle industry, where they finally reached a level that can help offset the constantly rising expenses and costs of doing business. From the highs of last summer and early fall, with sale after sale of good prices, to the recent rebound we've seen after a late fall lull, the future market is strong and there is optimism throughout the industry. With decreased cowherd numbers, the current position is hopefully one with staying power. Once we have a change in the weather pattern to end the lingering drought affecting many areas, we could see a great run in this industry. We know the resilience of the ranchers and people who populate the cattle business, and its exciting to see people be rewarded for their work and dedication.

The bulls this year are the most exciting set we have ever offered, with the depth of quality unmatched. Our cowherd continues to grow in numbers, more calves, coupled with a high bull calf percentage last year, has given us what we feel is the most consistent set of bulls we have offered to date, even though it is the largest group we've had. Consistency is one of the biggest keys in this industry. In the commercial world it isn't about how good are the top few, it is how even and good is the whole group. The majority of the bulls in the sale are out of a sire we own or raised, who has ran with cows on our ranch. We have always felt that owning these bulls gives us a better idea of how they work and mature in real life. We spend countless hours searching for the best genetics we can find to bring to our customers, and we are really excited about the herdsire battery that we have assembled. We have some exciting new sire groups this year that have clicked very well with our cows. We strive to produce bulls that have a solid foundation, being structurally sound and eye appealing, with good hair, scrotal size and temperament. From this foundation, we can then add levels of calving ease, performance and carcass merit to the equation. There is so much information out there when it comes to breeding Angus cattle, we try and sort through all of that to make bulls that are balanced and work for our customers.

In travelling around, whether delivering bulls, helping at a branding or just stopping for a visit, we try to take stock of what is important to our customers. With the dry conditions, and limited and expensive feed supplies, the efficiency of a cowherd becomes more and more important. We want calves that perform and wean off heavy, out of cows that have a modest mature size and are low input cattle. We try to make our cows work the same as a lot of our customers. Our cowherd is never fed any grain. From early September weaning until mid December, the mature cows eat banked coulee grass and drink from natural springs. The young cows graze cover crops, silage regrowth and stubble. The cows



BA tuesday march 5

1:30PM AT THE FARM, INNISFAIL, ALBERTA

come home only because its time to calve. Grazing days are the most valuable days to any cowherd, and we try to maximize them. Our commercial customers make their living on the productivity and consistency of their cowherd, and we feel that we should be the same.

Our bulls are fed a forage-based ration. The bulls are fed a modest amount of grain, and we feel the bull's hair, semen tests, movement and feet reflect this. It is our opinion that feeding them in this manner allows them to show their true genetic potential. We don't creep feed our bulls, so their weaning weight is a reflection of their mother's milk and the bull's ability to grow. The bulls are all semen tested, vet inspected and fully guaranteed. We stand behind the bulls 100%, and if there are any issues with a bull sold in the sale, we will make sure it is looked after.

The yearling bulls are weaned the start of September and spend the next three months in one large group in a 20 acre field. They are sorted into their pens in early December, where they remain until sale day. The extra age bulls come from a completely different management group of 45 females. The cows in the summer calving window calve on pasture from late May until July. These summer born bulls are weaned in early January. They graze again from June to late November, at which point they are moved to the sale facility. These bulls haven't been offered for sale before, they are bred specifically to be sold as extra age bulls. We feel there are standouts in both groups this year.

The sale will again feature a group of open heifers that represent the same sires and cow families as the bulls. We will be hosting our fall Female Sale this October, and these heifers offer a preview of what will be available in that sale.

We would like to invite you to our sale facility east of Bowden, on Tuesday, March 5th. The sale cattle are always available for viewing, so we encourage people to come look at them anytime before the sale. Feel free to contact any of us to arrange a visit. The sale consultants listed in the catalogue are all familiar with the offering, so contact any of them for information or assistance with bidding. Online bidding will once again be offered with DLMS. Videos of the bulls will be posted online in the weeks leading up to the sale, on our website and at DLMS.ca. We guarantee full satisfaction of any bulls that are purchased sight unseen.

To close, we would like to sincerely thank all the customers and supporters of our program. It's a cliché, but the best and most important part of the cattle industry is the people. We truly enjoy the relationships we have formed with some of the leading ranchers from across Western Canada, and we are humbled by the calibre of people we get to deal with.

Thank you and take care, _____ *Gavin & Mabel • Colton • Brendyn, Quinn and Ivy*



sale information

SALE LOCATION Exit from Queen Elizabeth #2 at Bowden. Go east 4 miles (6.4 km) on Highway 587 to Rge Rd 284, south 2 miles (3.2 km) to Twp Rd 342, east 1/2 mile (0.8 km). The sale location is on south side of road.



BELVIN ANGUS

Gavin, Mabel, and Colton Hamilton
Quinn, Brendyn, and Ivy Elliot
Box 6134 Innisfail, AB • T4G 1S8

HOME 403.224.2355 **GAVIN** 403.556.5246

COLTON 403.507.5416 **QUINN** 403.507.9142

MABEL 403.556.0127 **BRENDYN** 250.449.5071

belvinangus@xplornet.com

www.belvinangus.com

OFFERING 111 Yearling Angus Bulls
12 Extra Age Bulls
10 Open Purebred Angus Heifers
Viewing of sale cattle is welcome at any time

SCHEDULE Tuesday, March 5, 2024
9:00 am Cattle available for viewing
12:00 pm Complimentary lunch
1:30 pm *Belvin Twelfth Annual Bull Sale*
by video in heated sale facility

VIDEOS View videos of all bulls online at
www.belvinangus.com

DLMS **ONLINE VIEWING AND BIDDING** The
www.dlms.ca sale will be available for viewing and
bidding through DLMS.ca. Log onto the website to
sign up and if you have any problems, contact Mark
Shologan 1.780.699.5082

sales staff

Ryan Dorran, Auctioneer 403.507.6483

Craig Flewelling, Ring Service 403.556.0515

Rod McLeod, Ring Service 403.540.7986

Mark Stock, Ring Service 403.357.8104

SALES REPRESENTATIVES

Bohrson Marketing

Scott Bohrson 403.370.3010

Rob Voice 306.270.608

Riley Bohrson 639.213.7777

OBI Livestock Ltd.

Mark Holowaychuk 403.896.4990

Roger Peters 403.828.9815

Cantrix Livestock

Dave Saretsky 403.896.9616

BC Representative

Clint Ellis 604.309.5355

Canadian Angus Association Representative

Myles Immerkar, CEO

DELIVERY Belvin Angus will deliver bulls
free in Western Canada OR bring your own trailer
and receive a \$100.00 discount on the purchase
price of the bull. All bulls remaining at Belvin
Angus must be insured. Insurance will be available.

TERMS Full terms and conditions listed on page 36.

SALE ACCOMMODATIONS

Best Western Inn (Olds) 403.556.5900

Ramada Inn (Olds) 403.556.8349

Days Inn (Innisfail) 403.227.4405

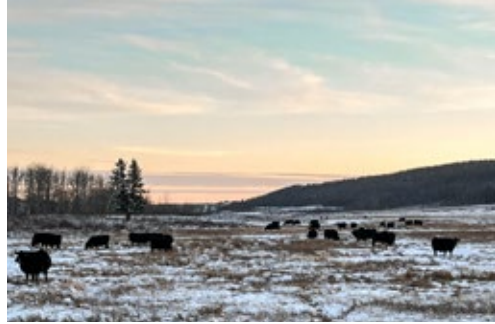
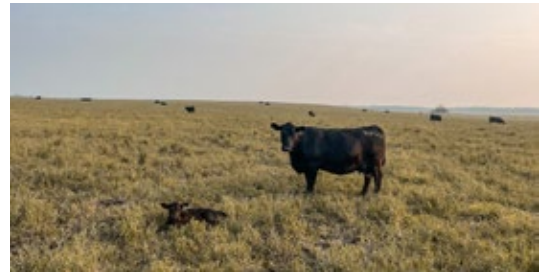
Super 8 (Innisfail) 403.227.6001

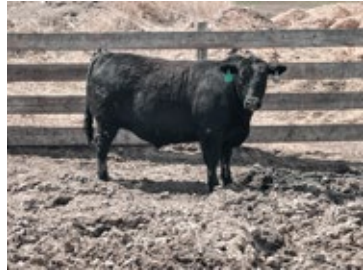
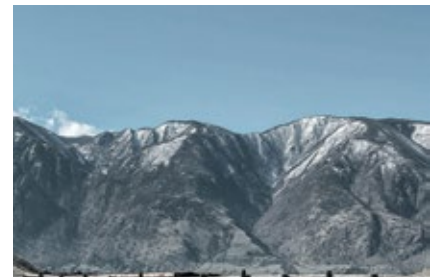
Catalog design/photos/videos by **top stock**



12th annual bull sale

MARCH 5, 2024 AT 1:30PM AT THE FARM, INNISFAIL, ALBERTA





FROM PASTURE, TO RAIL, TO PLATE...

Bred to be profitable in all segments of the industry.

MAVERICK SIRED CARCASS



PROUD TO WORK WITH INDUSTRY PARTNERS



revival

WOODHILL REVIVAL H028 [24 SONS SELL]

Owned with Canadian Sires and Woodhill Farms – Woodhill Revival H028 was the high selling bull in the 2021 Woodhill Farms sale at \$55,000. He is sired by the popular and deceased Woodhill Relevance and out of a donor female from the very maternal Woodhill program. The Revival calves are born easy yet show impressive growth and shape at an early age. Revival is a strong footed bull who has been admired by many visitors for his impressive phenotype. He also features leading EPD's across the board, with calving ease, growth and carcass quality. With 24 sons selling, this sire group is the largest in the sale and one of the biggest groups we have offered in any sale to date. The Revival sons are extremely consistent in their type, with the length, shape and eye appeal of their father. There are many exciting herdsire prospects in the Revival sire group.

BW	WW	YW	MK	GED	GEM	CW	MB	REA	FT
-0.4	73	134	27	10.0	11.0	68	0.98	0.62	.068

BA reference sires



may city

BELVIN MAY CITY 0136 [10 SONS SELL]

Owned with Canadian Sires and Brooking Angus. Belvin May City 0136 was the highlight and High Seller of our 2021 Female Sale. His combination of awesome muscle shape, a soft middle, great feet, big scrotal and a commanding presence made May City a popular individual, not to mention his outcross pedigree. The dam of May City is a feature cow in our program, she's deep ribbed, wedge shaped and great footed with an awesome udder. The May City sons are dense made like him, strong footed and deep sided. May City offspring are showing up in some leading programs, and his popularity should continue to grow. His first daughters have calved and carry his mom's maternal look.



BW	WW	YW	MK	CED	CEM	CW	MB	REA	FT
2.9	70	107	16	2.0	7.0	47	0.37	0.85	.001

roll call

BROOKING ROLL CALL 9045 [14 SONS SELL]

Brooking Roll Call 9045 is another bull with a maternally charged pedigree, with the foundation cow families of the Brooking program, Rose, Beauty and Annie K, all in his pedigree. Roll Call was a sale feature at the 2020 Brooking Sale, and his dam is the prolific Brooking Beauty 333 cow, the high earning cow in the history of the Brooking program. Roll Call is also a flush mate to the popular Brooking Mercury. The Roll Call sons on offer are a powerhouse group, with added frame, performance, bone and hair. They are also a very strong footed bulls.



BW	WW	YW	MK	CED	CEM	CW	MB	REA	FT
2.6	59	101	32	2.0	8.0	32	0.08	0.27	.040

vegas

BALDRIDGE VEGAS G082 [9 SONS SELL]

Baldrige Vegas G082 is a direct son of the legendary and now deceased Baldrige Isabel Y69, one of the highest earning cows in the history of the Angus breed. His sire, Spring Cove Reno 4021 is a proven, balanced trait sire who offers an outcross pedigree to most of the Canadian herd book. Vegas is very complete, he combines moderate birthweights with solid performance, carcass quality, great feet, and impressive docility. The Vegas sons on offer are sale features with their stout, dense makeup. The Vegas daughters in production are deep ribbed, angular cows with beautiful udders, true to their Isabel lineage.



BW	WW	YW	MK	CED	CEM	CW	MB	REA	FT
1.7	74	127	33	-2	1.0	48	0.64	0.83	-.04



BW	WW
6.1	74
YW	MK
136	22
CE	CEM
-11	1.0
CW	MB
56	0.22
REA	FT
0.63	.016

LT WARDEN 8316 [6 SONS SELL] is the power bull in our herd sire lineup, with performance numbers that rank at the very top of the breed. The Warden sons are heavy boned and good footed, and they carry a muscle pattern similar to their sire. You can see the influence of Resource, the maternal grandsire of Warden, in him and his sons. The Warden daughters are massive made, but still feminine and attractive, which is no surprise as the Lindskov-Thiel cowherd is noted for its maternal strength.



BW	WW
-3.3	56
YW	MK
99	25
CE	CEM
16	14
CW	MB
39	1.0
REA	FT
0.51	.085

BALDRIDGE MERCENARY D002 [5 SONS SELL] has been an extremely reliable calving ease sire, ranking in the top 1% of the breed for CE and BW EPD's. His calves are born small, grow fast and have excellent carcass merit. No other proven bull in the CAA database can match his combination of calving ease, WW, YW, milk and marbling. Mercenary himself is a very soft made, easy keeping, good looking bull, and his offspring possess this same phenotype.



BW	WW
1.3	66
YW	MK
123	28
CE	CEM
0.0	3.0
CW	MB
46	1.20
REA	FT
1.04	-.024

RIVERBEND LAWMAN J053 [4 SONS SELL] Owned with Semex, Riverbend Lawman J053 was selected from the 2022 Riverbend Ranches Sale as a balanced trait sire, who ranks in the top 1% of the breed for CBI. Lawman also ranks in the top 3% of the breed for both Marb and REA, and he will add another level of carcass merit to our operation. Lawman has a different pedigree with two leading donor dams backing him maternally.



BW	WW
1.1	72
YW	MK
123	35
CE	CEM
3.0	4.0
CW	MB
65	1.63
REA	FT
0.72	.043

POSS MAVERICK [4 SONS SELL], now owned by Herbster Angus, remains one of the most popular bulls in the Angus breed today. His ability to sire cattle with incredible marbling that are still fleshy, easy doing, stout and functional is almost unparalleled. He is a true outlier in that regard. Maverick's influence is felt in the sale with direct offspring and many maternal grandsons selling.



BW	WW
-4.1	75
YW	MK
120	29
CE	CEM
17	16
CW	MB
44	0.39
REA	FT
0.37	.048

HEIKEN TRADEMARK 1018 [3 SONS SELL] is a new calving ease sire, who combines a CE EPD of +17 with a BW EPD of -4.1, both numbers are in the top 1% of the breed. The first Trademark calves have been born true to those numbers, making him a surefire calving ease bull. Sired by the very popular Sitz Logo 12694, Trademark also has growth, docility and fertility built into his pedigree. Phenotypically he is soft made with impressive muscle.



BW	WW
1.2	75
YW	MK
124	29
CE	CEM
5.0	5.0
CW	MB
57	1.28
REA	FT
0.70	.034

BELVIN HIGHMORE 0330 [2 SONS SELL] was the \$34,000 High Seller in our 2022 sale to Semex and Yarrow Creek farm, who was unfortunately lost to injury. The best son of Maverick that we raised, Highmore was a standout phenotypically, who had solid performance and the awesome marbling of his sire. His dam is one of the most attractive and admired cows we have. A maternal brother by May City will lead off our 2025 extra age bulls.



BW	WW
3.3	72
YW	MK
129	19
CED	CEM
5	4
CW	MB
63	0.73
REA	FT
1	.013

RIVERBEND EVEREST H1231 [7 SONS SELL] was purchased as one of the sale features in the 2022 Riverbend Sale. Everest is a physically imposing bull, with impressive length and body shape in an attractive package. He is a high-performance bull who is solid across the board for growth and carcass quality. Everest is sired by the proven SS Niagara Z29, and he offers an outcross pedigree to much of the Canadian herdbook.



BW	WW
0.2	76
YW	MK
125	21
CED	CEM
6.0	11
CW	MB
44	0.54
REA	FT
0.60	.028

SITZ MAJOR 707F [10 SONS SELL] sons have been very sought after by many cattlemen the last three years. A direct son of Sitz Stellar 726D, one of the breeds most prevalent bulls, Major is a spread bull who offers calving ease and impressive growth, combined with athleticism and great foot quality. Major is a proven sire, with over 300 calves registered in the CAA database, and he has an awesome EPD profile, ranking in the top 10% of the breed for 5 different traits. The Sitz Angus cowherd is one of the most remarkable, maternal cowherds you will find, and that maternal strength shines through in the Major daughters.

BW	WW	YW	MK	CED	CEM	CW	MB	REA	FT
0.04	65	109	31	7	12	47	1.15	0.7	.009

HART LIMIT UP 0506 [6 SONS SELL] Hart Limit Up 0506 was purchased from Hart Angus in South Dakota in their 2021 sale. His dam is the most productive female in the history of their program. Limit Up is a maternal brother to the \$290,000 Hart Showcase owned by Semex, while full brothers to Limit Up are owned by ST Genetics and Grimmus Cattle. Limit Up is as well rounded a sire as we have. He moderates frame while adding volume and the muscle expression of his sire, Hoover No Doubt. Limit Up also improves scrotal, has an awesome foot, solid calving ease, and a Marb EPD of 1.16, ranking in the top 4% of the breed. A bull we appreciate more every day, Limit Up will play a large role moving forward in our operation.



BW	WW
1.3	60
YW	MK
107	27
CED	CEM
3.0	6.0
CW	MB
33	0.7
REA	FT
0.96	.027

SQUARE B ATLANTIS 8060 [12 SONS SELL] Square B Atlantis 8060 features a maternally packed pedigree, with two of the breeds great cows, SAV Blackcap May 4136 and Elbanna of Conanga 1209, up close in his pedigree. The Atlantis sons are packed full of muscle and shape in an eye appealing package. Our first Atlantis daughters have calved, and they are beautiful cows with excellent udders.



limit
up

B
A

A close-up photograph of a dark brown yearling bull's head, looking slightly to the left. The bull has a thick, shaggy coat and a prominent white blaze on its face. The background shows a field of dry grass under a clear sky.

DESIGNED WITH THE COMMERCIAL PRODUCER IN MIND

yearling
bulls
BA

2

Belvin Livewire 3002

MALE #2321671 DECEMBER 13 2022 BA 3002K PEN 2

Poss Easy Impact 0119

BALDRIDGE ALTERNATIVE E125

Baldrige Blackbird A030

SA V Pioneer 7301

BELVIN LADY BLOSSOM 44'14

Belvin Lady Blossom 37'01

Poss Total Impact 745

Poss Elmaretta 736

Hoover Dam

Baldrige Blackbird X89

SA V Final Answer 0035

SA V Blackbird 5297

Leachman Right Time

Belvin Lady Blossom 66'94



BA 3002K

BW	ADJ 205	ADJ 365	BW	WW	YW	MK	CED	CEM	CW	MARB	REA	FT
86	712	1167	4.9	74	120	21	0.0	8.0	43	0.40	0.56	-0.026

EMBRYO TRANSFER

3

Belvin Laredo 3003

MALE #2309205 DECEMBER 16 2022 BA 3003K PEN 1

Poss Maverick

BELVIN HIGHMORE 0330

Belvin 3E Black Angel 3'17

Bar-E-L Natural Law 52Y

BELVIN ECHO 3'21

HF Echo 111Y

Basin Payweight 1682

Poss Pride 5163

Soo Line Motive 9016

Werner Black Angel 1299

SA V Bismarck 5682

Bar-E-L Magnolia 143K

HF El Tigre 28U

HF Echo 207N

Laredo 3003 is an eye catching son of Highmore 0330, our 2022 High Selling Bull to Semex and Yarrow Creek for \$34,000. 3003 possesses impressive growth numbers, along with being deep ribbed and stout made, with good bone and ample character. His dam is sired by the famed Natural Law and is a full sister to the 2018 Agribition Supreme Champion Female. The cross of the Black Angel and Echo cow families is a strong maternal backing.

BW	ADJ 205	ADJ 365	BW	WW	YW	MK	CED	CEM	CW	MARB	REA	FT
85	807	1387	3.4	77	131	28	-4.0	0.0	57	0.67	0.75	0.020



BA 3003K



BA 3008K

8 **Belvin Lindros 3008**
 MALE #2309832 DECEMBER 18 2022 BA 3008K PEN 1

<p><i>Woodhill Relevance</i> WOODHILL REVIVAL H028 <i>Woodhill Evergreen A43-F039</i></p> <p><i>Baldrige Mercenary Doo2</i> BELVIN GEORGINA 78'21 <i>Belvin Georgina 45'17</i></p>	<p><i>Connealy Confidence Plus</i> <i>Woodhill Blackbird X197-Z7</i> <i>Basin Payweight 1682</i> <i>Woodhill Evergreen Y10-A43</i> <i>EF Commando 1366</i> <i>Baldrige Rachel A029</i> <i>HF Syndicate 65B</i> <i>Belvin Georgina 21'15</i></p>
--	--

Lindros 3008 is the first Revival son in the catalogue and a great example to start off the sire group. Long, balanced and stout made with extra rib shape, 3008 is a top end calving ease option, with a +11 CE EPD, solid growth and strong marbling. 3008 weaned off his first calving dam, Georgina 78'21, with an ADJ WW of 780 lbs. 78'21 is a typical Mercenary daughter, being low maintenance with an excellent udder.

BW	ADJ 205	ADJ 365	BW	WW	YW	MK	CED	CEM	CW	MARB	REA	FT
68	780	1354	0.7	62	123	25	11.0	12.0	57	0.97	0.57	0.063

9 **Belvin Louisville 3009**
 MALE #2309206 DECEMBER 18 2022 BA 3009K PEN 4

<p><i>Poss Maverick</i> BELVIN HIGHMORE 0330 <i>Belvin 3E Black Angel 3'17</i></p> <p><i>Baldrige Discovery D121</i> BELVIN LADY BLOSSOM 241'21 <i>Belvin Lady Blossom 166'12</i></p>	<p><i>Basin Payweight 1682</i> <i>Poss Pride 5163</i> <i>Soo Line Motive 9016</i> <i>Werner Black Angel 1299</i> <i>Fortunes Conquest 224</i> <i>Baldrige Lady X200</i> <i>Belvin Tres Marias Patron 205</i> <i>Belvin Lady Blossom 64'04</i></p>
---	--



BA 3009K

BW	ADJ 205	ADJ 365	BW	WW	YW	MK	CED	CEM	CW	MARB	REA	FT
71	686	1178	0.0	51	95	29	10.0	8.0	33	0.77	0.34	0.032



BA 3011K

11

Belvin Lemieux 3011

MALE #2319297 DECEMBER 20 2022 BA 3011K PEN 1

King Ranch 009
MATERNAL BROTHER



Woodhill Relevance
WOODHILL REVIVAL H028
Woodhill Evergreen A43-F039

Baldrige Mercenary Doo2
BELVIN LADY BLOSSOM 9'19
Belvin Lady Blossom 122'17

Connealy Confidence Plus
Woodhill Blackbird X197-Z7
Basin Payweight 1682
Woodhill Evergreen Y10-A43
EF Commando 1366
Baldrige Rachel A029
Merit Cast Iron 5094C
Belvin Lady Blossom 96'13

Another impressive Revival son from a Mercenary dam, Lemieux 3011 is a massive bodied, powerful prospect. Him attractive phenotype is matched with growth and marbling numbers in the top 10% of the breed. The dam of 3011 is one of the very best Mercenary daughters in their herd, a cow with a tremendous amount of volume and fleshing ease. A maternal brother to 3011 was a feature bull to Parkview Farms last year.

BW	ADJ 205	ADJ 365	BW	WW	YW	MK	CED	CEM	CW	MARB	REA	FT
84	788	1351	1.3	77	125	20	5.0	2.0	58	1.01	0.46	0.066



BA 3013K

13

Belvin Legend 3013

MALE #2321661 DECEMBER 22 2022 BA 3013K PEN 3

Vermillion Reride F116
BELVIN MAY CITY 0136
Belvin Georgina 121'17

O C C Legacy 839L
KFC 839L MISS LEGACY 019
KFC 4532 Miss Rainmaker

Vermillion Re-Ride
Vermillion Lucy 5087
HF Syndicate 65B
Belvin Georgina 45'15
O C C Echelon 857E
O C C Dixie Erica 960E
Crowfoot 4532P
Barnett Miss Wiseguy 29P

BW	ADJ 205	ADJ 365	BW	WW	YW	MK	CED	CEM	CW	MARB	REA	FT
86	628	1122	2.3	36	57	15	1.0	7.0	22	0.73	0.35	0.029

EMBRYO TRANSFER



Miss Legacy 019 DAM



BA 3014K

BW	ADJ 205	ADJ 365	BW	WW	YW	MK	CED	CEM	CW	MARB	REA	FT
88	717	1200	-0.7	35	57	16	8.0	9.0	17	0.25	0.52	0.009

14 **Belvin Legacy 3014**
 MALE #2321662 DECEMBER 23 2022 BA 3014K PEN 1

Vermillion Reride F116
BELVIN MAY CITY 0136
 Belvin Georgina 121'17

O C C Legacy 839L
KFC 839L MISS LEGACY 019
 KFC 4532 Miss Rainmaker

Vermillion Re-Ride
 Vermillion Lucy 5087
 HF Syndicate 65B
 Belvin Georgina 45'15
 O C C Echelon 857E
 O C C Dixie Erica 960E
 Crowfoot 4532P
 Barnett Miss Wiseguy 29P

Legacy 3014 is one of the top May City sons in the offering, this ET transfer bull is long bodied, and sound. His dam was a top Donor female in our program who had a perfect udder and ideal body type, typical of her Legacy x Rainmaker lineage. With 36 progeny registered to date, 0190X has sons working at top outfits across Western Canada including Klaudt Ranches, Clifton Ranch (2), East & West Ranching Co. Ltd (2), Clegg Angus, Ellis Cattle Co, Hargrave Ranching, Ilnicki Ranch, Cluny Colony, Arrowwood Colony, Cantriex Livestock, Jade Farms, Whey Lake Farms, and Willow Valley Ranch. **EMBRYO TRANSFER**

15 **Belvin Levitate 3015**
 MALE #2309207 DECEMBER 23 2022 BA 3015K PEN 1

Woodhill Relevance
WOODHILL REVIVAL H028
 Woodhill Evergreen A43-F039

Baldrige Mercenary D002
BELVIN ERICA 34'19
 Belvin Erica 122'15

Connealy Confidence Plus
 Woodhill Blackbird X197-Z7
 Basin Payweight 1682
 Woodhill Evergreen Y10-A43
 EF Commando 1366
 Baldrige Rachel A029
 Duralta 56S Yellowstone 136X
 Belvin Erica 54'10

Levitate 3015 is a smooth muscled, moderate framed calving ease bull. Again combining Revival and Mercenary. This dense male bull offers elite end product merit with a marbling EPD in the top 2% of the breed at 1.32, the highest number in the offering. 3015 also features top maternal traits with large milk EPD, strong heifer pregnancy and reduced mature size. A maternal brother sold last year to Elkink Ranch Ltd. **TWIN**



BA 3015K

BW	ADJ 205	ADJ 365	BW	WW	YW	MK	CED	CEM	CW	MARB	REA	FT
68	680	1185	-0.4	53	96	32	7.0	12.0	50	1.32	0.50	0.118

17 **Belvin Larkspur 3017**
 MALE #2309286 DECEMBER 24 2022 BA 3017K PEN 3

<p><i>Basin Payweight 1682</i> POSS MAVERICK <i>Poss Pride 5163</i></p> <p><i>Belvin Flyin' High 8020</i> BELVIN GEORGINA 208'21 <i>Belvin Georgina 9'16</i></p>	<p><i>Basin Payweight 006S</i> <i>21AR O Lass 7017</i> <i>Poss Hoover Dam 2509</i> <i>Poss Pride 9526</i> <i>Musgrave Sky High 1535</i> <i>Belvin Emblynette 208'11</i> <i>HF Junction 18B</i> <i>Belvin Georgina 024'14</i></p>
--	---

BW	ADJ 205	ADJ 365	BW	WW	YW	MK	CED	CEM	CW	MARB	REA	FT
84	676	1203	2.3	65	108	23	-1.0	-3.0	43	0.91	0.56	0.023



Left to Right: Colton, Gavin, Brendyn – **Please call us with any questions about the bulls.**

20 **Belvin Lithium 3020**
 MALE #2309287 DECEMBER 25 2022 BA 3020K PEN 1

<p><i>Woodhill Relevance</i> WOODHILL REVIVAL H028 <i>Woodhill Evergreen A43-F039</i></p> <p><i>Musgrave Sky High 1535</i> BELVIN LADY BLOSSOM 130'19 <i>Belvin Lady Blossom 48'13</i></p>	<p><i>Connealy Confidence Plus</i> <i>Woodhill Blackbird X197-Z7</i> <i>Basin Payweight 1682</i> <i>Woodhill Evergreen Y10-A43</i> <i>Musgrave Big Sky</i> <i>Flag Queen W 00649</i> <i>Belvin Warrior 6'09</i> <i>Belvin Lady Blossom 51'07</i></p>
--	---

BW	ADJ 205	ADJ 365	BW	WW	YW	MK	CED	CEM	CW	MARB	REA	FT
87	739	1383	1.8	65	120	27	5.0	10.0	55	0.83	0.65	0.051

Lithium 3020 is a herd sire prospect by Revival that has been admired at every age. His length, muscle shape, and overall presence make for a very impressive package. 3020 is very correct and travels with ease on great feet and legs. This bull has great conversion figures and gained over 4 lbs a day post weaning, for a YW index of 118. Coupled with the end product merit of the Revival sire group, 3020 will add profitability to any program. His dam by Sky High is a feature female in our program; she is perfect uddered and easy fleshing, her maternal sister is also the mother of the feature 170 bull.





BA 3022K

22

Belvin Lancer 3022

MALE #2309288 DECEMBER 26 2022 BA 3022K PEN 4

Hoover No Doubt
HART LIMIT UP 0506
 Hart Whitney 3206

Poss Maverick
BELVIN QUEEN GEM 72'21
 Braeside Queen Gem 56'11

Mogck Bullseye
 Miss Blackcap Ellston J2
 Connealy Cavalry 1149
 Hart Whitney 0244
 Basin Payweight 1682
 Poss Pride 5163
 Belvin Warrior 6'09
 Braeside Queen Gem 20'06

BW	ADJ 205	ADJ 365	BW	WW	YW	MK	CED	CEM	CW	MARB	REA	FT
58	696	1306	-1.3	58	107	36	10.0	9.0	49	1.12	0.67	0.010

23

Belvin Lariat 3023

MALE #2309289 DECEMBER 27 2022 BA 3023K PEN 3

Sitz Stellar 726D
SITZ MAJOR 707F
 Sitz Lady 383D

Baldridge Alternative E125
BELVIN LADY BLOSSOM 79'21
 Belvin Lady Blossom 63'19

Mohnen Substantial 272
 Sitz Pride 200B
 Sitz Bullseye 10594
 Sitz Lady 319Y
 Poss Easy Impact 0119
 Baldridge Blackbird A030
 Montana Octane 6121
 Belvin Lady Blossom 79'10

BW	ADJ 205	ADJ 365	BW	WW	YW	MK	CED	CEM	CW	MARB	REA	FT
78	776	1216	0.9	65	111	22	7.0	11.0	37	0.75	0.74	-0.034

24

Belvin Landslide 3024

MALE #2319323 DECEMBER 27 2022 BA 3024K PEN 2

SA V Rainfall 6846
SQUARE B ATLANTIS 8060
 Elbanna of Conanga 1209

Wiwa Creek Monarch 248'12
BELVIN ANDRIA 48'15
 Belvin Tres Marias Andria 7313

Coleman Charlo 0256
 SA V Blackcap May 4136
 Connealy Consensus
 Elbasta of Conanga 9703
 Wiwa Creek Monarch 53'08
 Wiwa Creek Evergreen 623'06
 Tres Marias 6301 Zorzal
 Tres Marias 7358 LA Andria T/E

Landslide 3024 is a feature bull and powerhouse of the Atlantis sire group. His dam is a donor female in our program who traces back to the great Tres Marias 6301 Zorzal. Maternal brothers to 3024 include our High Selling bull in 2019 to Diamond Willow Ranch, with other feature sons selling to Jack Kinsella and East & West Ranching Co. Ltd. A pair of full sisters to 3024 are at the front end of our replacement heifers this spring. **EMBRYO TRANSFER**



BA 3024K

Andria 48'15 DAM



BW	ADJ 205	ADJ 365	BW	WW	YW	MK	CED	CEM	CW	MARB	REA	FT
89	753	1329	4.2	74	124	23	-2.0	8.0	56	0.57	1.02	-0.010



BA 3027K

27 **Belvin Loan Shark 3027**
 MALE #2309291 DECEMBER 28 2022 BA 3027K PEN 1

Woodhill Relevance
WOODHILL REVIVAL H028
 Woodhill Evergreen A43-F039

Baldrige Mercenary Doo2
BELVIN QUEEN 37'19
 Belvin Queen 177'16

Connealy Confidence Plus
 Woodhill Blackbird X197-Z7
 Basin Payweight 1682
 Woodhill Evergreen Y10-A43
 EF Commando 1366
 Baldrige Rachel A029
 Belvin Velasquez 203'11
 Belvin Queen 144'10

Yet another Revival x Mercenary combination, Loan Shark 3027 is typical of the Revival sire group, an attractive bull who has the calving ease to be used on heifers and solid growth. The best part of 3027 is his dam, who is likely our best Mercenary daughter, which says a lot given the depth of quality that group of females possess. Queen 37'19 is our "fertility queen", who has now had 4 calves in a 5 day calving window. This future donor female is a big bodied powerhouse with an angular front end. The maternal strength of 3027 is huge.

BW	ADJ 205	ADJ 365	BW	WW	YW	MK	CED	CEM	CW	MARB	REA	FT
84	700	1297	0.5	61	115	26	12.0	14.0	54	0.40	0.83	0.024

29 **Belvin Lancaster 3029**
 MALE #2309292 DECEMBER 29 2022 BA 3029K PEN 3

Woodhill Relevance
WOODHILL REVIVAL H028
 Woodhill Evergreen A43-F039

Poss Maverick
BELVIN LADY BLOSSOM 57'20
 Belvin Lady Blossom 98'18

Connealy Confidence Plus
 Woodhill Blackbird X197-Z7
 Basin Payweight 1682
 Woodhill Evergreen Y10-A43
 Basin Payweight 1682
 Poss Pride 5163
 HF Junction 18B
 Belvin Lady Blossom 37'15



BA 3029K

BW	ADJ 205	ADJ 365	BW	WW	YW	MK	CED	CEM	CW	MARB	REA	FT
79	691	1186	-0.2	57	99	27	11.0	12.0	36	0.83	0.59	0.026



BA 3031K

BW	ADJ 205	ADJ 365	BW	WW	YW	MK	CED	CEM	CW	MARB	REA	FT
90	839	1395	4.0	84	144	29	-3.0	5.0	65	0.56	0.70	-0.029

31 **Belvin Latigo 3031**
 MALE #2309293 DECEMBER 29 2022 BA 3031K PEN 2

- Sitz Stellar 726D
 - SITZ MAJOR 707F**
 - Sitz Lady 383D

 - Poss Maverick
 - BELVIN LADY BLOSSOM 112'21**
 - Belvin Lady Blossom 46'15
- Mohen Substantial 272
 - Sitz Pride 200B
 - Sitz Bullseye 10594
 - Sitz Lady 319Y
 - Basin Payweight 1682
 - Poss Pride 5163
 - Belvin Velasquez 203'11
 - Belvin Lady Blossom 102'12

Latigo 3031 is one of the highest performing bulls in the offering with a ADJ WW of 839 lbs as a heifers first calf. 3031 has elite predictions for growth with both WW and YW in the top 1% of the breed, matching his individual figures. His powerful young dam by Maverick is a broody, long bodied female from a productive cow family; she is a maternal sister to the powerful lot 116 bull in this offering. 3031 is a rugged built, heavy muscled bull with extra length and substance.

32 **Belvin Lightning 3032**
 MALE #2309295 DECEMBER 30 2022 BA 3032K PEN 2

- Sitz Stellar 726D
 - SITZ MAJOR 707F**
 - Sitz Lady 383D

 - Poss Maverick
 - BELVIN QUEEN 97'19**
 - Belvin Queen 144'10
- Mohen Substantial 272
 - Sitz Pride 200B
 - Sitz Bullseye 10594
 - Sitz Lady 319Y
 - Basin Payweight 1682
 - Poss Pride 5163
 - Sunny Dynasty 13R
 - Belvin Queen 17'04

Lightning 3032 highlights numerous bulls in this sale that offer the Major X Maverick cross that has been so successful for us. These bulls have a balanced combination of performance, end product merit and maternal power. 3032 himself offers early growth, bold design and added capacity. Backed by the Queen cow family you can expect a strong maternal influence that will increase milk, longevity, and fertility. Maternal brother at Barrington Ranch Ltd.



BA 3032K

BW	ADJ 205	ADJ 365	BW	WW	YW	MK	CED	CEM	CW	MARB	REA	FT
100	794	1263	2.2	65	122	34	-4.0	2.0	50	0.91	0.86	-0.004

33 **Belvin Lyon 3033**
 MALE #2309296 DECEMBER 30 2022 BA 3033K PEN 2

<p><i>Koupals B&B Titan 3013</i> LT WARDEN 8316 <i>LT Lucy 4078 TW</i></p> <p><i>Belvin Vicarious 1'10</i> BELVIN LADY BLOSSOM 102'12 <i>Belvin Lady Blossom 7'05</i></p>	<p><i>Koupals B&B Extra 0011</i> <i>B&B Blackcap 0068</i> <i>SA V Resource 1441</i> <i>LT Lucy 0349</i> <i>SA V Final Answer 0035</i> <i>Belvin Georgina 81'03</i> <i>TC Freedom 104</i> <i>Belvin Lady Blossom 22'02</i></p>
---	--

BW	ADJ 205	ADJ 365	BW	WW	YW	MK	CED	CEM	CW	MARB	REA	FT
107	781	1300	6.0	75	139	21	-8.0	-2.0	61	0.14	0.68	-0.015



BA 3033K

36 **Belvin Roll Call 3036**
 MALE #2309297 DECEMBER 30 2022 BA 3036K PEN 1

<p><i>Brooking Firebrand 6068</i> BROOKING ROLL CALL 9045 <i>Brooking Beauty 333</i></p> <p><i>HF Junction 18B</i> BELVIN EMBLYNETTE 89'18 <i>Belvin Emblynette 201'12</i></p>	<p><i>Brooking Bank Note 4040</i> <i>Brooking Annie K 390</i> <i>SA V Harvester 0338</i> <i>TLA Beauty 6R</i> <i>Young Dale Yohann 39Y</i> <i>HF Elsiemere 106W</i> <i>HF Kodiak 5R</i> <i>SA V Emblynette 5486</i></p>
--	--

This front end Roll Call son is the cowman's kind with loads of performance, a modest birth weight and travels freely on an exceptional set of feet and legs. 3036 boasted a YW index of 119, the top of his contemporary group. Like his sire, 3036 has a big top, added bone and large scrotal. His mother is a perfect uddered Junction daughter who was a feature of her calf crop, she produced a feature bull in our 2023 sale to Vandenhoven Farms.

38 **Belvin Limited 3038**
 MALE #2309312 DECEMBER 31 2022 BA 3038K PEN 4

<p><i>Hoover No Doubt</i> HART LIMIT UP 0506 <i>Hart Whitney 3206</i></p> <p><i>Bar-E-L Natural Law 52Y</i> ANCHORAGE LADY 1401 <i>Top Line Lady 102</i></p>	<p><i>Mogck Bullseye</i> <i>Miss Blackcap Ellston J2</i> <i>Connealy Cavalry 1149</i> <i>Hart Whitney 0244</i> <i>SA V Bismarck 5682</i> <i>Bar-E-L Magnolia 143K</i> <i>SA V 8180 Traveler 004</i> <i>Gambles Lady 634</i></p>
--	--

BW	ADJ 205	ADJ 365	BW	WW	YW	MK	CED	CEM	CW	MARB	REA	FT
63	667	1078	-0.9	55	89	31	11.0	14.0	17	0.76	0.26	0.046



top stock

BA 3036K

Belvin Vegas 2068 MATERNAL BROTHER



BW	ADJ 205	ADJ 365	BW	WW	YW	MK	CED	CEM	CW	MARB	REA	FT
88	709	1354	1.6	63	111	33	5.0	11.0	35	0.30	0.13	0.024



BA 3042K

42 **Belvin Lewiston 3042**
 MALE #2309314 DECEMBER 31 2022 BA 3042K PEN 1

Vermillion Reride F116
BELVIN MAY CITY 0136
Belvin Georgina 121'17

S A V Radiance 0801
GREENWOOD FAY JJP 14D
Timber Wolf 250 19Y

Vermillion Re-Ride
Vermillion Lucy 5087
HF Syndicate 65B
Belvin Georgina 45'15
S A V Brilliance 8077
S A V Elba 801
Currie F250 65W
Timber Wolf Fay 13T

Lewiston 3042 is a featured calving ease May City son, who has presence and Angus character. This thick made, moderate framed bull will have elite calving ease and lower birth weight with his CE EPD of 14, and BW EPD of -1.6 landing in the top percentiles of the breed. His Radiance dam is an easy fleshing, nice made female with a tight udder coming from the Greenwood program through the Angus Collection sale. Maternal sibling have previously sold to Heinz Cattle Co, Lawrence Ranch, Overguard Land & Cattle, and Hummock Springs Ranch.

BW	ADJ 205	ADJ 365	BW	WW	YW	MK	CED	CEM	CW	MARB	REA	FT
77	662	1163	-1.6	37	69	21	14.0	14.0	16	0.54	0.27	0.055

44 **Coul Loch Ness 3044**
 MALE #2309315 JANUARY 01 2023 COUL 44L PEN 3

Woodhill Relevance
WOODHILL REVIVAL H028
Woodhill Evergreen A43-F039

Sitz Major 707F
COUL GEORGINA 44'21
Coul Georgina 168'19

Connealy Confidence Plus
Woodhill Blackbird X197-Z7
Basin Payweight 1682
Woodhill Evergreen Y10-A43
Sitz Stellar 726D
Sitz Lady 383D
Poss Maverick
Coul Georgina 165'12



COUL 44L

BW	ADJ 205	ADJ 365	BW	WW	YW	MK	CED	CEM	CW	MARB	REA	FT
76	762	1296	2.9	79	131	28	0.0	3.0	60	0.50	0.45	0.075



BA 45L

BW	ADJ 205	ADJ 365	BW	WW	YW	MK	CED	CEM	CW	MARB	REA	FT
104	750	1393	3.9	67	110	34	1.0	1.0	53	0.48	0.31	0.087

45 Belvin Luxor 3045

MALE #2309316 JANUARY 02 2023 BA 45L PEN 2

Brooking Firebrand 6068

BROOKING ROLL CALL 9045

Brooking Beauty 333

Baldrige Mercenary D002

BELVIN ERICA 26'19

Belvin Erica 56'17

Brooking Bank Note 4040

Brooking Annie K 390

SA V Harvester 0338

TLA Beauty 6R

EF Commando 1366

Baldrige Rachel A029

HF Syndicate 65B

Belvin Erica 111'15

Luxor 3045 is one of the featured power bulls in the sale who patters much like his sire, with unmatched muscle, large scrotal, and excellent feet. 3045 has been a stand out from a young age with early maturity and herd bull presence. 3045 posted a big yearling weight gaining over 4 lbs a day post weaning to index 118 for yearling weight. His functional dam is strong uddered and easy fleshing, typical of the Mercenary daughters. This powerhouse is a definite sale highlight and will be easy to find.

47 Belvin Lineage 3047

MALE #2309317 JANUARY 02 2023 BA 47L PEN 1

Woodhill Relevance

WOODHILL REVIVAL H028

Woodhill Evergreen A43-F039

Baldrige Discovery D121

BELVIN LADY BLOSSOM 6'20

Belvin Lady Blossom 205'12

Connealy Confidence Plus

Woodhill Blackbird X197-Z7

Basin Payweight 1682

Woodhill Evergreen Y10-A43

Fortunes Conquest 224

Baldrige Lady X200

SA V Pioneer 7301

Belvin Lady Blossom 37'01

Lineage 3047 is a very eye appealing and balanced bull with great depth of body and structural correctness. With a big top, length, and fault free design 3047 is an exciting herd sire prospect. Revival stamps his progeny with calving ease, performance and style. 3047 has a very maternal pedigree; his young Discovery mother is among our best and is the type of female to build around, she is a daughter of our herd bull producing donor 205'12 who produced many high caliber progeny.



BA 47L

BW	ADJ 205	ADJ 365	BW	WW	YW	MK	CED	CEM	CW	MARB	REA	FT
88	766	1287	1.5	62	110	35	8.0	4.0	48	0.67	0.53	0.075

Lady Blossom 6'20 DAM



48**Coul Lordship 3048**

MALE #2309318 JANUARY 03 2023 COUL 48L PEN 3

*Basin Payweight 1682***POSS MAVERICK***Poss Pride 5163**Baldrige Discovery D121***COUL KATE 228'21***Coul Tres Marias Kate 152'15**Basin Payweight 006S**21AR O Lass 7017**Poss Hoover Dam 2509**Poss Pride 9526**Fortunes Conquest 224**Baldrige Lady X200**Tres Marias 6301 Zorzal**Tres Marias 7048 Junior 5746*

BW	ADJ 205	ADJ 365	BW	WW	YW	MK	CED	CEM	CW	MARB	REA	FT
74	790	1323	1.5	79	132	24	2.0	4.0	60	1.20	0.60	0.013

54**Belvin Lionheart 3054**

MALE #2309321 JANUARY 04 2023 BA 54L PEN 2

*Vermillion Reride F116***BELVIN MAY CITY 0136***Belvin Georgina 121'17**B C Lookout 7024***BELVIN LADY BLOSSOM 16'16***Belvin Lady Blossom 35'14**Vermillion Re-Ride**Vermillion Lucy 5087**HF Syndicate 65B**Belvin Georgina 45'15**O C C Legend 616L**Gibbet Hill Mignonne E37**Belvin Tres Marias Patron 205**Belvin Lady Blossom 14'09*

BW	ADJ 205	ADJ 365	BW	WW	YW	MK	CED	CEM	CW	MARB	REA	FT
102	697	1250	3.8	63	102	12	-4.0	7.0	28	0.17	0.43	-0.019

Longbow 3055 is a great example of why Maverick has worked so well in our program, siring cattle with highly marbled meat that maintain great phenotype with added volume, flesing ability, stoutness and functionality. 3055 is a stout made, deep bodied bull with a solid EPD profile for growth, docility, conversion, end product merit and milk. His first calving Major dam has a level, square udder, and in her own right was a feature of her calf crop. This multi trait herd sire prospect will be a very profitable breeding tool.



COUL 48L



BA 54L

55**Belvin Longbow 3055**

MALE #2309323 JANUARY 04 2023 BA 55L PEN 1

*Basin Payweight 1682***POSS MAVERICK***Poss Pride 5163**Sitz Major 707F***BELVIN LADY BLOSSOM 6'21***Belvin Lady Blossom 175'19**Basin Payweight 006S**21AR O Lass 7017**Poss Hoover Dam 2509**Poss Pride 9526**Sitz Stellar 726D**Sitz Lady 383D**HF Syndicate 65B**Belvin Lady Blossom 76'12*

BA 55L

BW	ADJ 205	ADJ 365	BW	WW	YW	MK	CED	CEM	CW	MARB	REA	FT
81	793	1379	2.2	77	139	34	0.0	9.0	61	0.68	0.50	0.009



BA 58L



BA 59L

58

Belvin Lethal 3058

MALE #2319355 JANUARY 04 2023 BA 58L PEN 2

Woodhill Relevance

WOODHILL REVIVAL H028

Woodhill Evergreen A43-F039

Tres Marias 6301 Zorzal

BELVIN TRES MARIAS 6'13

Tres Marias 6914 Baraja 5526

Connealy Confidence Plus

Woodhill Blackbird X197-Z7

Basin Payweight 1682

Woodhill Evergreen Y10-A43

Tres Marias 5887 Hornero

Tres Marias 4850 Wind

Red Tres Marias 5839 Quebracho

Tres Marias 4490 Boreas 5 T/E

BW	ADJ	ADJ	BW	WW	YW	MK	CED	CEM	CW	MARB	REA	FT
98	750	1349	2.5	56	105	21	2.0	8.0	49	0.88	0.56	-0.004

EMBRYO TRANSFER

59

Belvin Lateral 3059

MALE #2309324 JANUARY 04 2023 BA 59L PEN 4

Sitz Stellar 726D

SITZ MAJOR 707F

Sitz Lady 383D

Poss Maverick

BELVIN DUCHESS 27'21

Belvin Duchess 100'19

Mohen Substantial 272

Sitz Pride 200B

Sitz Bullseye 10594

Sitz Lady 319Y

Basin Payweight 1682

Poss Pride 5163

HF Junction 18B

Belvin Duchess 67'10

BW	ADJ	ADJ	BW	WW	YW	MK	CED	CEM	CW	MARB	REA	FT
74	715	1290	1.2	72	131	27	2.0	8.0	59	0.79	0.63	0.011

63

Belvin Lockbox 3063

MALE #2309351 JANUARY 05 2023 BA 63L PEN 2

SA V Rainfall 6846

SQUARE B ATLANTIS 8060

Elbanna of Conanga 1209

SA V Heavy Hitter 6347

BELVIN LADY BLOSSOM 42'10

Belvin Lady Blossom 40'01

Coleman Charlo 0256

SA V Blackcap May 4136

Connealy Consensus

Elbasta of Conanga 9703

SA V 8180 Traveler 004

SA V Bessie Heiress 1184

Woodlawn Stockyard 208

Belvin Lady Blossom 45'97

BW	ADJ	ADJ	BW	WW	YW	MK	CED	CEM	CW	MARB	REA	FT
84	722	1176	0.0	52	90	33	7.0	11.0	47	0.41	0.80	0.052



CONGRATULATIONS

Callum Miller

2024 RENO PBR
CHAMPION



top stock

66

Belvin Limit Up 3066

MALE #2309356 JANUARY 05 2023 BA 66L PEN 1

Hoover No Doubt

HART LIMIT UP 0506

Hart Whitney 3206

Sitz Major 707F

BELVIN LADY BLOSSOM 124'21

Belvin Lady Blossom 65'19

Mogck Bullseye

Miss Blackcap Ellston J2

Connealy Cavalry 1149

Hart Whitney 0244

Sitz Stellar 726D

Sitz Lady 383D

Baldrige Mercenary D002

Belvin Lady Blossom 154'15

3066 is a herd bull by Limit Up that is very complete and well balanced, with exceptional breed character and presence. This attractive herd sire prospect combines the Limit Up phenotype with the performance of Major and the calving ease of Mercenary. With just a 75 lb birth weight and heavy muscle expression, this feature bull checks all the boxes. 3066 has a balanced and elite EPD profile, with 12 traits in the top 20% including Docility, Growth, Calving Ease, Milk and Marbling. This heifer's first calf stands on exceptional feet and legs and will be a highlight sale day.

BW	ADJ 205	ADJ 365	BW	WW	YW	MK	CED	CEM	CW	MARB	REA	FT
75	740	1321	0.5	72	126	33	8.0	11.0	56	1.05	0.66	0.027

Mercenary MATERNAL GREAT GRANDSIRE



Major 707F MATERNAL GRANDSIRE



Limit Up SIRE





78 Belvin Lifeline 3078

MALE #2309360 JANUARY 06 2023 BA 78L PEN 2

Koupals B&B Titan 3013

LT WARDEN 8316

LT Lucy 4078 TW

Belvin Velasquez 203'11

BELVIN LADY BLOSSOM 190'17

Belvin Lady Blossom 184'10

Koupals B&B Extra 0011

B&B Blackcap 0068

S A V Resource 1441

LT Lucy 0349

S A V Bismarck 5682

Belvin Lady Blossom 31'96

LLB 902J Alliance 668S

Belvin Lady Blossom 83'07

BW	ADJ 205	ADJ 365	BW	WW	YW	MK	CED	CEM	CW	MARB	REA	FT
92	760	1215	2.6	60	101	34	-1.0	4.0	44	0.41	0.68	0.018



85 Belvin Late Night 3085

MALE #2309369 JANUARY 07 2023 BA 85L PEN 4

Woodhill Relevance

WOODHILL REVIVAL H028

Woodhill Evergreen A43-F039

Baldrige Vegas G082

BELVIN DUCHESS 37'21

Belvin Duchess 33'16

Connealy Confidence Plus

Woodhill Blackbird X197-Z7

Basin Payweight 1682

Woodhill Evergreen Y10-A43

Spring Cove Reno 4021

Baldrige Isabel Y69

Belvin Panic Switch 2'11

Belvin Duchess 20'14

BW	ADJ 205	ADJ 365	BW	WW	YW	MK	CED	CEM	CW	MARB	REA	FT
74	693	1219	-1.5	48	91	26	12.0	11.0	37	0.59	0.49	0.015

82 Belvin Longrider 3082

MALE #2309364 JANUARY 07 2023 BA 82L PEN 1

Sitz Stellar 726D

SITZ MAJOR 707F

Sitz Lady 383D

Poss Maverick

BELVIN LADY BLOSSOM 96'21

Belvin Lady Blossom 102'12

Mohnen Substantial 272

Sitz Pride 200B

Sitz Bullseye 10594

Sitz Lady 319Y

Basin Payweight 1682

Poss Pride 5163

Belvin Vicarious 1'10

Belvin Lady Blossom 7'05

Longrider 3082 represents why Major has worked so well in our program, siring moderate birth weight cattle with unprecedented weaning and yearling growth. This big time marbling bull sports a 1.06 EPD landing in the top 5% of the breed, while maintaining a large Ribeye in the top 10%. His two year old Maverick dam is a moderate, easy fleshing female that is the kind we strive to produce. The Major sons are good footed and athletic, the kind that will thrive in any environment.



BW	ADJ 205	ADJ 365	BW	WW	YW	MK	CED	CEM	CW	MARB	REA	FT
70	796	1364	0.3	73	118	24	6.0	6.0	48	1.06	0.79	0.032

89

Belvin Loyal 3089

MALE #2309371 JANUARY 08 2023 BA 89L PEN 2

Brooking Firebrand 6068

BROOKING ROLL CALL 9045

Brooking Beauty 333

Baldrige Discovery D121

BELVIN LADY BLOSSOM 159'20

Belvin Lady Blossom 76'12

Brooking Bank Note 4040

Brooking Annie K 390

S A V Harvester 0338

TLA Beauty 6R

Fortunes Conquest 224

Baldrige Lady X200

Ring Creek El Tigre 9X

Belvin Lady Blossom 29'08

BW	ADJ 205	ADJ 365	BW	WW	YW	MK	CED	CEM	CW	MARB	REA	FT
90	754	1226	3.3	62	111	26	2.0	6.0	38	0.44	0.27	0.038

94

Belvin Major 3094

MALE #2309377 JANUARY 09 2023 BA 94L PEN 3

Sitz Stellar 726D

SITZ MAJOR 707F

Sitz Lady 383D

Poss Maverick

BELVIN DUCHESS 163'20

Belvin Duchess 150'14

Mohmen Substantial 272

Sitz Pride 200B

Sitz Bullseye 10594

Sitz Lady 319Y

Basin Payweight 1682

Poss Pride 5163

Ring Creek El Tigre 9X

Belvin Duchess 26'07

BW	ADJ 205	ADJ 365	BW	WW	YW	MK	CED	CEM	CW	MARB	REA	FT
76	740	1237	-1.1	53	93	32	8.0	6.0	43	0.82	0.32	0.066

96

Belvin London 3096

MALE #2309379 JANUARY 09 2023 BA 96L PEN 3

Brooking Firebrand 6068

BROOKING ROLL CALL 9045

Brooking Beauty 333

Sitz Major 707F

BELVIN LADY BLOSSOM 103'20

Belvin Lady Blossom 136'18

Brooking Bank Note 4040

Brooking Annie K 390

S A V Harvester 0338

TLA Beauty 6R

Sitz Stellar 726D

Sitz Lady 383D

Baldrige Discovery D121

Belvin Lady Blossom 125'15

BW	ADJ 205	ADJ 365	BW	WW	YW	MK	CED	CEM	CW	MARB	REA	FT
80	738	1233	-1.1	56	95	26	11.0	9.0	25	0.15	0.52	0.000

98

Belvin Letterman 3098

MALE #2309380 JANUARY 09 2023 BA 98L PEN 2

Brooking Firebrand 6068

BROOKING ROLL CALL 9045

Brooking Beauty 333

HF Syndicate 65B

BELVIN LADY 183'18

Belvin Lady 58'12

Brooking Bank Note 4040

Brooking Annie K 390

S A V Harvester 0338

TLA Beauty 6R

HF Syndicate 213Z

HF Blackbird 97S

Belvin Rebel 33'05

Western JMBC Lady 33R

BW	ADJ 205	ADJ 365	BW	WW	YW	MK	CED	CEM	CW	MARB	REA	FT
80	677	1241	0.0	45	88	34	5.0	7.0	37	0.13	0.16	0.038

99

Belvin Linebacker 3099

MALE #2309381 JANUARY 09 2023 BA 99L PEN 2

S A V Rainfall 6846

SQUARE B ATLANTIS 8060

Elbanna of Conanga 1209

Duralta 56S Yellowstone 136X

BELVIN LADY BLOSSOM 154'15

Belvin Lady Blossom 67'11

Coleman Charlo 0256

S A V Blackcap May 4136

Connealy Consensus

Elbasta of Conanga 9703

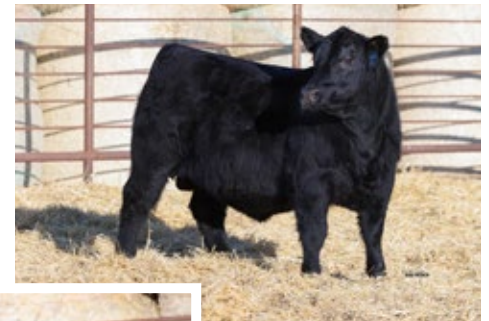
Minburn Yellowstone 56S

Duralta 32R Alliane 189U

Coul Warlord 12'09

Belvin Lady Blossom 51'07

Linebacker 3099 FRONT



BA 99L

BW	ADJ 205	ADJ 365	BW	WW	YW	MK	CED	CEM	CW	MARB	REA	FT
95	719	1272	2.5	58	100	19	-2.0	3.0	43	0.60	0.54	0.030



BA 104L

104 **Belvin Los Angeles 3104**
 MALE #2309382 JANUARY 10 2023 BA 104L PEN 2

<p><i>Vermillion Reride F116</i> BELVIN MAY CITY 0136 <i>Belvin Georgina 121'17</i></p> <p><i>Belvin Tres Marias Patron 205</i> BELVIN MARYLEE 15'14 <i>Belvin Marylee 105'12</i></p>	<p><i>Vermillion Re-Ride</i> <i>Vermillion Lucy 5087</i> <i>HF Syndicate 65B</i> <i>Belvin Georgina 45'15</i> <i>Alston 5384 Catriel F</i> <i>Tres Marias 6764 Rosanegra 5214</i> <i>Belvin Rebel 33'05</i> <i>Belvin Marylee 90'05</i></p>
---	--

BW	ADJ 205	ADJ 365	BW	WW	YW	MK	CED	CEM	CW	MARB	REA	FT
102	745	1355	3.8	69	123	13	-4.0	2.0	48	0.40	0.52	0.005

105 **Belvin Maverick 3105**
 MALE #2319273 JANUARY 11 2023 BA 105L PEN 3

<p><i>Basin Payweight 1682</i> POSS MAVERICK <i>Poss Pride 5163</i></p> <p><i>Ring Creek Bardolene 69W</i> BARBARA OF RING CREEK 65Y <i>Barbara of Ring Creek 31W</i></p>	<p><i>Basin Payweight 006S</i> <i>21AR O Lass 7017</i> <i>Poss Hoover Dam 2509</i> <i>Poss Pride 9526</i> <i>Saskalta Bardolene 188T</i> <i>Ring Creek Hobson 31S</i> <i>Basin Prime Cut 354K</i> <i>Barbara of Peak Dot 251M</i></p>
---	--

BW	ADJ 205	ADJ 365	BW	WW	YW	MK	CED	CEM	CW	MARB	REA	FT
88	646	1127	2.5	69	103	23	-2.0	-1.0	46	0.71	0.53	0.024

EMBRYO TRANSFER



BA 105L

110 **Belvin Lunar 3110**
 MALE #2309385 JANUARY 11 2023 BA 110L PEN 4

<p><i>Hoover No Doubt</i> HART LIMIT UP 0506 <i>Hart Whitney 3206</i></p> <p><i>Brooking Roll Call 9045</i> BELVIN LADY BLOSSOM 152'21 <i>Belvin Lady Blossom 170'17</i></p>	<p><i>Mogck Bullseye</i> <i>Miss Blackcap Ellston J2</i> <i>Connealy Cavalry 1149</i> <i>Hart Whitney 0244</i> <i>Brooking Firebrand 6068</i> <i>Brooking Beauty 333</i> <i>Belvin Velasquez 203'11</i> <i>Belvin Lady Blossom 9'11</i></p>
--	--

<p><i>Brooking Firebrand 6068</i> BROOKING ROLL CALL 9045 <i>Brooking Beauty 333</i></p> <p><i>HF Junction 18B</i> BELVIN DUCHESS 225'19 <i>Belvin Duchess 5'12</i></p>	<p><i>Brooking Bank Note 4040</i> <i>Brooking Annie K 390</i> <i>SA V Harvester 0338</i> <i>TLA Beauty 6R</i> <i>Young Dale Yohann 39Y</i> <i>HF Elsiemere 106W</i> <i>Duralta 56S Yellowstone 136X</i> <i>Belvin Duchess 115'06</i></p>
---	---

BW	ADJ 205	ADJ 365	BW	WW	YW	MK	CED	CEM	CW	MARB	REA	FT
67	644	1116	-1.3	31	55	35	10.0	14.0	4	0.11	0.09	0.046

BW	ADJ 205	ADJ 365	BW	WW	YW	MK	CED	CEM	CW	MARB	REA	FT
89	681	1184	2.3	52	88	29	1.0	13.0	13	0.30	0.40	-0.005



BA 111L

BW	ADJ 205	ADJ 365	BW	WW	YW	MK	CED	CEM	CW	MARB	REA	FT
79	738	1247	-0.5	55	103	24	5.0	7.0	31	0.59	0.29	0.040

111 Belvin Major 3111

MALE #2309386 JANUARY 12 2023 BA 111L PEN 3

Sitz Stellar 726D

SITZ MAJOR 707F

Sitz Lady 383D

Baldrige Alternative E125

BELVIN LADY HEATHER 91'21

Elliot 3E Lady Heather 4141

Mohnen Substantial 272

Sitz Pride 200B

Sitz Bullseye 10594

Sitz Lady 319Y

Poss Easy Impact 0119

Baldrige Blackbird A030

Connealy Dateline

Poplar MDWS Lady Heather 3W

Major 3111 is another thick topped and dense made Major son, with a negative birth EPD and solid growth. His dam is a first calving Alternative daughter, who has been one of the eye catching females in her contemporary group. The grandam and great grandam of 3111 both have long track records of production.

112 Belvin Revival 3112

MALE #2309387 JANUARY 12 2023 BA 112L PEN 2

Woodhill Relevance

WOODHILL REVIVAL H028

Woodhill Evergreen A43-F039

Poss Maverick

BELVIN LADY BLOSSOM 52'19

Belvin Lady Blossom 16'16

Connealy Confidence Plus

Woodhill Blackbird X197-Z7

Basin Payweight 1682

Woodhill Evergreen Y10-A43

Basin Payweight 1682

Poss Pride 5163

B C Lookout 7024

Belvin Lady Blossom 35'14

Revival 3112 is one of the big-time performance prospects in the offering, with outstanding weaning and yearling figures. A standout since birth, he posted the top YW in the offering at 1589 lbs. 3112 is a long bodied, big outlined bull who is packed full of muscle, and he will sire a set of feeder cattle second to none. Additionally, his high marbling and conversion values make this Revival son one that has much to offer the industry. A maternal brother was a past high seller to Glenbar Ranching.



BA 112L

BW	ADJ 205	ADJ 365	BW	WW	YW	MK	CED	CEM	CW	MARB	REA	FT
116	870	1589	6.8	87	144	19	-5.0	3.0	65	0.89	0.27	0.082

Jamestown 1036 MATERNAL BROTHER





BA 116L

116

Belvin Lake Placid 3116

MALE #2309428 JANUARY 12 2023 BA 116L PEN 2

Velasquez 203'11
MATERNAL GRANDSIRE



Vermillion Reride F116

BELVIN MAY CITY 0136

Belvin Georgina 121'17

Belvin Velasquez 203'11

BELVIN LADY BLOSSOM 46'15

Belvin Lady Blossom 102'12

Vermillion Re-Ride

Vermillion Lucy 5087

HF Syndicate 65B

Belvin Georgina 45'15

SA V Bismarck 5682

Belvin Lady Blossom 31'96

Belvin Vicarious 1'10

Belvin Lady Blossom 7'05

3116 is one of the top performance bulls in the sale with a big hip, added length, and a husky make up. True to his Re-Ride lineage, 3116 is an athletic, sound made, big footed bull that will cover rough country with ease. 3116 has the muscle shape and look of his grandsire Velasquez, who is among the best sires ever produced at our ranch with many daughters producing at a high level. 3116's dam has earned Elite status with the Canadian Angus Association and has been a strong asset to our herd. She has sons at Hummock Springs Ranch, Flying E Rancho and M5 Cattle Co.

BW	ADJ 205	ADJ 365	BW	WW	YW	MK	CED	CEM	CW	MARB	REA	FT
98	779	1331	5.5	71	112	28	-2.0	1.0	43	0.36	0.73	-0.004

120

Belvin Leather 3120

MALE #2309429 JANUARY 13 2023 BA 120L PEN 4

Woodhill Relevance

WOODHILL REVIVAL H028

Woodhill Evergreen A43-F039

Duralta 56S Yellowstone 136X

BELVIN QUEEN 63'15

Belvin Queen 144'10

Connealy Confidence Plus

Woodhill Blackbird X197-Z7

Basin Payweight 1682

Woodhill Evergreen Y10-A43

Minburn Yellowstone 56S

Duralta 32R Alliane 189U

Sunny Dynasty 13R

Belvin Queen 17'04



BW	ADJ 205	ADJ 365	BW	WW	YW	MK	CED	CEM	CW	MARB	REA	FT
86	618	1142	0.3	40	69	16	8.0	12.0	20	0.76	0.23	0.048



BA 122L

122 **Belvin Lever Action 3122**
 MALE #2309430 JANUARY 13 2023 BA 122L PEN 1

SA V Rainfall 6846
SQUARE B ATLANTIS 8060
Elbanna of Conanga 1209

HF Syndicate 65B
BELVIN 3E GEORGINA 30'16
Belvin Georgina 14'14

Coleman Charlo 0256
SA V Blackcap May 4136
Connealy Consensus
Elbasta of Conanga 9703
HF Syndicate 213Z
HF Blackbird 97S
Belvin Tres Marias Patron 205
Belvin Georgina 33'12

BW	ADJ 205	ADJ 365	BW	WW	YW	MK	CED	CEM	CW	MARB	REA	FT
88	772	1376	2.0	63	110	34	3.0	3.0	50	0.59	1.05	0.006

With all the characteristics of a true herd bull, Lever Action 3122 has a lot of thickness over his top, bold muscle shape and added capacity. As one of the top Atlantis sons produced in our program, he is a very complete and sound structured bull with a perfect foot and an eye catching look. His Syndicate sired dam has all the qualities of an ideal ranch cow with great feet, femininity, and a picture-perfect udder. This big ribeye bull offers a very balanced set of figures and strong performance index's, he will add profitability and predictability to any program. Maternal brothers have sold to East & West Ranching Co. Ltd, Bar Two Three Ranch, Flying E Ranche, and Illniki Ranch.

123 **Belvin Limit 3123**
 MALE #2309431 JANUARY 13 2023 BA 123L PEN 4

Hoover No Doubt
HART LIMIT UP 0506
Hart Whitney 3206

Poss Maverick
BELVIN LUCY 35'21
Belvin Lucy 60'19

Mogck Bullseye
Miss Blackcap Ellston J2
Connealy Cavalry 1149
Hart Whitney 0244
Basin Payweight 1682
Poss Pride 5163
HF Junction 18B
LCL Lucy 22A

BW	ADJ 205	ADJ 365	BW	WW	YW	MK	CED	CEM	CW	MARB	REA	FT
77	752	1328	0.6	67	114	24	7.0	9.0	51	0.97	0.61	0.008



BA 123L



BA 124L

BW	ADJ	ADJ	BW	WW	YW	MK	CED	CEM	CW	MARB	REA	FT
	205	365										
84	829	1351	2.0	69	120	20	6.0	13.0	65	1.02	0.70	0.054

124 **Belvin Lapointe 3124**
 MALE #2309436 JANUARY 13 2023 BA 124L PEN 1

Woodhill Relevance
WOODHILL REVIVAL H028
Woodhill Evergreen A43-F039

Poss Maverick
BELVIN GEORGINA 253'20
Belvin Georgina 81'16

Connealy Confidence Plus
Woodhill Blackbird X197-Z7
Basin Payweight 1682
Woodhill Evergreen Y10-A43
Basin Payweight 1682
Poss Pride 5163
HF Syndicate 65B
Belvin Georgina 95'14

Lapointe 3124 adds to the long list of feature Revival sons. 3124 is a high growth curve bender, who combines a modest BW, strong predictions for growth and carcass merit with an attractive look. This big weaning weight bull posted an impressive 829 ADJ WW to Index 108 in a strong contemporary group. He also sports a strong MARB EPD of 1.02. His hard-working young Maverick dam stacks some of the very potent cows in our herd.

127 **Belvin Logarithm 3127**
 MALE #2309439 JANUARY 14 2023 BA 127L PEN 1

S S Niagara Z29
RIVERBEND EVEREST H1231
Riverbend Rita D1008

HF Kodiak 5R
BELVIN EMBLYNETTE 201'12
S A V Emblynette 5486

Hoover Dam
Jet S S X144
V A R Generation 2100
Riverbend Rita B1156
Sandy Bar Advantage 43M
Wilbar Ruby 955N
S A V 8180 Traveler 004
S A V Emblynette 7260

Logarithm 3127 is a top calving ease Everest son, who compliments that sire group with a large birth to weaning spread. Posting double-digit calving ease and just a 0.0 on BW, 3127 offers breeding versatility to see use on heifers and cows. 3127 was a summer favorite beside his no miss dam that is a member of the famous Emblynette cow family from SAV. She is as long and deep as you can find, and is still producing at 12 years old. Sons are working at Morinville Colony, Rauch Ranch, Flying E Ranche, Ellis Cattle Co., Jahnke Ranches and the Chotowetz Family.



BA 127L

BW	ADJ	ADJ	BW	WW	YW	MK	CED	CEM	CW	MARB	REA	FT
	205	365										
80	736	1294	0.0	62	108	24	11.0	4.0	41	0.50	0.32	0.043



BA 135L

BW	ADJ 205	ADJ 365	BW	WW	YW	MK	CED	CEM	CW	MARB	REA	FT
96	825	1453	3.4	82	145	27	-7.0	-1.0	54	0.66	0.58	-0.008

135 **Belvin Las Vegas 3135**
 MALE #2309444 JANUARY 15 2023 BA 135L PEN 2

Spring Cove Reno 4021
BALDRIDGE VEGAS G082
Baldridge Isabel Y69

Belvin Panic Switch 2'11
BELVIN GEORGINA 21'13
Belvin Georgina 10'11

KM Broken Bow 002
Spring Cove Liza 021
Styles Upgrade J59
Baldridge Isabel T935
S A V Pioneer 7301
Belvin Lady Blossom 14'09
HF Tiger 5T
Belvin Georgina 81'03

Las Vegas 3135 is a performance-orientated son of Vegas who is heavy muscled, big topped and bold made. This heavy weight has commanding substance and sports performance and conversion figures in the top 1% of the Angus breed. 3135 is one of the top WW and YW bulls of his calf crop, posting a strong index at both stages. His larger framed Panic Switch mother is noted for her stellar production and is designated an Elite Dam by the Canadian Angus Association. A maternal brother is at Barrington Ranch Ltd.

136 **Belvin Lucky Strike 3136**
 MALE #2319344 JANUARY 15 2023 BA 136L PEN 3

S A V Rainfall 6846
SQUARE B ATLANTIS 8060
Elbanna of Conanga 1209

Belvin Warrior 6'09
BELVIN LASSIE 143'13
Belvin Lassie 13'06

Coleman Charlo 0256
S A V Blackcap May 4136
Connealy Consensus
Elbasta of Conanga 9703
S A V Heavy Hitter 6347
Belvin Lady Blossom 22'02
Belvin Panther 21'04
Northline Black Crystal 145P

Lucky Strike 3136 is a stout made, flashy Atlantis son. The dam of 3136 is a CAA elite cow who has had sons sell to Carlson Farms, Chotowetz Family, Ilnicki Ranch and Bearpaw Intl Trading Company. The maternal grandam, Lassie 13'06, was also a CAA Elite dam, who produced until 15 years of age, with numerous feature sons in the bull sale. 3136 is backed by impressive longevity and productivity.



BA 136L

BW	ADJ 205	ADJ 365	BW	WW	YW	MK	CED	CEM	CW	MARB	REA	FT
81	689	1155	-0.9	45	72	26	9.0	6.0	17	0.47	0.46	0.044



BA 137L

137

Belvin Lockhart 3137

MALE #2309446 JANUARY 15 2023 BA 137L PEN 3

Georgina 125'22
MATERNAL SISTER



Spring Cove Reno 4021
BALDRIDGE VEGAS G082
Baldridge Isabel Y69

HF Smokin' Aces 105Y
GREENWOOD PRIDE 3B
Bar-E-L Pride 118Z

KM Broken Bow 002
Spring Cove Liza 021
Styles Upgrade J59
Baldridge Isabel T935
Greens Premium 7578
HF Erica 26T
SA V Iron Mountain 8066
Everblack G R Pride 76T

BW	ADJ 205	ADJ 365	BW	WW	YW	MK	CED	CEM	CW	MARB	REA	FT
93	680	1181	3.1	67	105	21	-6.0	2.0	31	0.59	0.70	-0.035

Another feature Vegas son is Lockhart 3137, who is a soft made, hairy, attractively designed bull. The dam of 3137 was purchased from Greenwood in the Angus Collection Sale and has a stellar production record. A daughter sold in our female sale last fall as a leading heifer to Boom Angus, while a son was a feature in 2022 to Riley Isaacson.

140

Coul Major 3140

MALE #2309447 JANUARY 16 2023 COUL 140L PEN 2

Sitz Stellar 726D
SITZ MAJOR 707F
Sitz Lady 383D

Poss Maverick
COUL GEORGINA 81'21
Coul Georgina 165'12

Mohnen Substantial 272
Sitz Pride 200B
Sitz Bullseye 10594
Sitz Lady 319Y
Basin Payweight 1682
Poss Pride 5163
Ring Creek El Tigre 9X
Belvin Georgina 18'08

BW	ADJ 205	ADJ 365	BW	WW	YW	MK	CED	CEM	CW	MARB	REA	FT
89	863	1286	3.1	73	117	25	-6.0	4.0	53	0.60	0.76	0.029



141 **Belvin Lost City 3141**
 MALE #2309448 JANUARY 16 2023 BA 141L PEN 3

SA V Rainfall 6846	Coleman Charlo 0256
SQUARE B ATLANTIS 8060	SA V Blackcap May 4136
Elbanna of Conanga 1209	Connealy Consensus
Belvin Panic Switch 2'11	Elbasta of Conanga 9703
BELVIN GEORGINA 19'15	SA V Pioneer 7301
Belvin Georgina 26'13	Belvin Lady Blossom 14'09
	Duralta 56S Yellowstone 136X
	Belvin Georgina 62'08

BW	ADJ 205	ADJ 365	BW	WW	YW	MK	CED	CEM	CW	MARB	REA	FT
84	693	1196	1.9	50	92	31	-1.0	2.0	37	0.74	0.75	0.001



BA 141L

142 **Belvin LA Little Steven 3142**
 MALE #2309450 JANUARY 16 2023 BA 142L PEN 2

Brooking Firebrand 6068	Brooking Bank Note 4040
BROOKING ROLL CALL 9045	Brooking Annie K 390
Brooking Beauty 333	SA V Harvester 0338
HF Junction 18B	TLA Beauty 6R
BELVIN LADY BLOSSOM 246'18	Young Dale Yohann 39Y
Belvin Lady Blossom 12'15	HF Elsiemere 106W
	Sitz Alliance 6595
	Belvin Lady Blossom 22'02

BW	ADJ 205	ADJ 365	BW	WW	YW	MK	CED	CEM	CW	MARB	REA	FT
98	721	1169	3.9	56	100	16	0.0	7.0	36	0.17	0.15	0.032



BA 142L

BULL SALE Terms & Conditions

OWNERSHIP Belvin Angus will retain 1/3 semen interest in all bulls selling. Buyer has full possession and full salvage value of the bull.

CATTLE INSPECTION All bulls carry permanent identity tags that correspond with the Sale Lot numbers. The bulls also carry a freeze brand, correlating their birth year and their tag number. All bulls have the required CCIA buttons. Cattle available for viewing prior to the sale.

BREEDING GUARANTEE All bulls sell with the responsible Breeders Guarantee of Satisfaction. All bulls are guaranteed. All cattle sell under the Terms and Conditions set forth by the Canadian Angus Association.

SIGHT UNSEEN PURCHASE GUARANTEE If you are unable to attend the sale, we have a sight unseen purchase plan that is 100% satisfaction guaranteed. Contact any of us for further details.

INSURANCE Ownership risk to purchaser commences when the Auctioneer's hammer falls. Livestock insurance will be available sale day.

TERMS OF SALE Cash or cheque at par, payable to Clerks on Sale Day. No release of cattle will occur until satisfactory settlement has been made.

LIABILITY All Persons who attend this sale do so at their own risk, and the owners and sale staff assume no liability, legal or otherwise for property loss or for any accidents that may occur.

ANNOUNCEMENTS Errors discovered in the catalogue will be corrected from the auction block at the beginning of the sale and such corrections will take precedence over the printed material in the catalogue.

ANGUS 3S **GENOMICALLY ENHANCED EPDS** All bulls are parent verified and have genetically enhanced EPDs.

CARCASS DATA

ULTRASOUND The bulls have all been ultrasounded. Ultrasound results will be available sale day.



144 Belvin Lonesome Dove 3144

MALE #2309451 JANUARY 16 2023 BA 144L PEN 2

Woodhill Relevance
WOODHILL REVIVAL H028
 Woodhill Evergreen A43-F039
 Belvin Tres Marias Patron 205
BELVIN GEORGINA 14'14
 Belvin Georgina 33'12

Connealy Confidence Plus
 Woodhill Blackbird X197-Z7
 Basin Payweight 1682
 Woodhill Evergreen Y10-A43
 Alston 5384 Catriel F
 Tres Marias6764 Rosanegra 5214
 Ring Creek El Tigre 9X
 Belvin Georgina 18'10

Lonesome Dove 3144 adds to a long list of accomplishments from our potent donor cow, Georgina 14'14. Some of her offspring include the High Selling Female in our fall sale to El Sauz Angus of Mexico, and our resident herd sire Kokanee 2022. 3144 is a true power bull with added growth, length, muscle shape and body mass. 3144 will add pay weight, with growth figures for WW and YW both in the top 1% of the breed and index's to match. Maternal brothers have sold previously to Clifton Ranch, East & West Ranching Co. Ltd (3), B&J Schneider Ranching and Klautd Ranches.

BW	ADJ 205	ADJ 365	BW	WW	YW	MK	CED	CEM	CW	MARB	REA	FT
104	820	1453	5.8	87	148	16	-5.0	2.0	72	0.66	0.68	0.034

Georgina 14'14 DAM



Georgina 33'12 MATERNAL GRANDDAM



Kokanee 2022 MATERNAL BROTHER





BA 145L

145

Belvin Langdon 3145

MALE #2309452 JANUARY 16 2023 BA 145L PEN 2

Koupals B&B Titan 3013

LT WARDEN 8316

LT Lucy 4078 TW

Wiwa Creek Monarch 248'12

BELVIN LADY DI 84'17

Belvin Lady DI 124'10

Koupals B&B Extra 0011

B&B Blackcap 0068

S A V Resource 1441

LT Lucy 0349

Wiwa Creek Monarch 53'08

Wiwa Creek Evergreen 623'06

Belvin Rebel 33'05

Belvin Lady DI 32'00

BW	ADJ 205	ADJ 365	BW	WW	YW	MK	CED	CEM	CW	MARB	REA	FT
98	721	1302	6.5	59	116	24	-7.0	5.0	60	0.08	0.41	-0.008



BA 148L

148

Belvin Vegas 3148

MALE (TWIN) #2309453 JANUARY 16 2023 BA 148L PEN 3

Spring Cove Reno 4021

BALDRIDGE VEGAS G082

Baldrige Isabel Y69

Duralta 56S Yellowstone 136X

BELVIN LADY BLOSSOM 93'14

Belvin Lady Blossom 160'11

KM Broken Bow 002

Spring Cove Liza 021

Styles Upgrade J59

Baldrige Isabel T935

Minburn Yellowstone 56S

Duralta 32R Alliane 189U

Belvin Rebel 33'05

Belvin Lady Blossom 7'05

BW	ADJ 205	ADJ 365	BW	WW	YW	MK	CED	CEM	CW	MARB	REA	FT
80	732	1290	3.0	60	111	26	-6.0	-2.0	57	0.57	0.46	0.067



BA 150L

150

Belvin Lafayette 3150

MALE #2309454 JANUARY 17 2023 BA 150L PEN 4

Hoover No Doubt

HART LIMIT UP 0506

Hart Whitney 3206

Baldrige Vegas G082

BELVIN LADY BLOSSOM 149'21

Belvin Lady Blossom 46'18

Mogck Bullseye

Miss Blackcap Ellston J2

Connealy Cavalry 1149

Hart Whitney 0244

Spring Cove Reno 4021

Baldrige Isabel Y69

JNJ Pokerface 10C

Belvin Lady Blossom 112'14

BW	ADJ 205	ADJ 365	BW	WW	YW	MK	CED	CEM	CW	MARB	REA	FT
74	718	1187	-0.4	68	113	27	4.0	12.0	40	0.76	0.60	0.028





BA 152L

152 **Belvin Logan 3152**
 MALE #2309455 JANUARY 17 2023 BA 152L PEN 2

<p><i>S S Niagara Z29</i> RIVERBEND EVEREST H1231 <i>Riverbend Rita D1008</i></p> <p><i>SH Superman 0159</i> RING CREEK SUPER LADY 24Z <i>Lady of Ring Creek 45X</i></p>	<p><i>Hoover Dam</i> <i>Jet S S X144</i> <i>V A R Generation 2100</i> <i>Riverbend Rita B1156</i> <i>Leachman Saugahatchee 3000C</i> <i>Masterfare LG Blossom 4013</i> <i>Basin Prime Cut 354K</i> <i>Ring Creek 004 CAP Lady 24T</i></p>
--	--

Logan 3152 is the powerhouse of the Everest sire group with lots of body mass, length and presence. 3152 has looked impressive from a young age at the side of his 12-year-old dam, with his added growth and attractive look. His mother is a top cow from the Ring Creek herd, who is very functional with added volume and a tight udder. 3152 offer strong growth traits with top index's at both WW and YW, coupled with top maternal traits for fertility and milk. Maternal brothers have been selected by Alexis Creek Ranch, Flying E Ranche, Cluny Colony, and the Chotowetz Family.

BW	ADJ 205	ADJ 365	BW	WW	YW	MK	CED	CEM	CW	MARB	REA	FT
96	821	1431	3.3	73	117	33	5.0	10.0	47	0.52	0.64	0.008

158 **Belvin May City 3158**
 MALE (TWIN) #2309507 JANUARY 18 2023 BA 158L PEN 3

<p><i>Vermillion Reride F116</i> BELVIN MAY CITY 0136 <i>Belvin Georgina 121'17</i></p> <p><i>Wiwa Creek Monarch 248'12</i> BELVIN LADY BLOSSOM 176'17 <i>Belvin Lady Blossom 17'08</i></p>	<p><i>Vermillion Re-Ride</i> <i>Vermillion Lucy 5087</i> <i>HF Syndicate 65B</i> <i>Belvin Georgina 45'15</i> <i>Wiwa Creek Monarch 53'08</i> <i>Wiwa Creek Evergreen 623'06</i> <i>Glen Islay Battle Cry 27L</i> <i>Belvin Lady Blossom 22'02</i></p>
---	---



BA 158L

BW	ADJ 205	ADJ 365	BW	WW	YW	MK	CED	CEM	CW	MARB	REA	FT
86	688	1240	4.9	56	92	16	-5.0	6.0	36	0.59	0.32	0.018



BA 160L

BW	ADJ 205	ADJ 365	BW	WW	YW	MK	CED	CEM	CW	MARB	REA	FT
88	691	1220	3.0	47	76	16	-3.0	3.0	38	0.46	0.70	0.026

160 **Belvin Lansing 3160**
 MALE #2309509 JANUARY 19 2023 BA 160L PEN 1

Vermillion Reride F116
BELVIN MAY CITY 0136
 Belvin Georgina 121'17

Duralta 56S Yellowstone 136X
BELVIN ERICA 122'15
 Belvin Erica 54'10

Vermillion Re-Ride
 Vermillion Lucy 5087
 HF Syndicate 65B
 Belvin Georgina 45'15
 Minburn Yellowstone 56S
 Duralta 32R Alliane 189U
 HF Tiger 5T
 Belvin Erica 2'06

The May City sire group will be one of the most consistent sets of bulls we have offered. They have an attractive look, natural muscle, breed character and great feet. Lansing 3160 is a compact made bull with added muscle shape and a great look to him. His mother is one of our best Yellowstone daughters and has a picture perfect udder, she is also the granddam of lot 15. Maternal brothers are working at Barrington Ranch Ltd and Cluny Colony.

162 **Belvin Roll Call 3162**
 MALE #2309510 JANUARY 19 2023 BA 162L PEN 1

Brooking Firebrand 6068
BROOKING ROLL CALL 9045
 Brooking Beauty 333

Montana Octane 6121
BELVIN LADY BLOSSOM 69'19
 Belvin Lady Blossom 44'14

Brooking Bank Note 4040
 Brooking Annie K 390
 SA V Harvester 0338
 TLA Beauty 6R
 JMB Traction 292
 K C F Miss Absolute A198
 SA V Pioneer 7301
 Belvin Lady Blossom 37'01

3162 fits the Roll Call mold to a tee being heavy boned, wide based and packed full of muscle. With his herd bull presence, 3162 will be noted on sale day. 3162 combines top cow power with the powerful donor Brooking Beauty 333 on the top side and the performance female Lady Blossom 44'14 on the bottom, who has produced 10 sons for us both naturally and through embryo transfer.



BA 162L

BW	ADJ 205	ADJ 365	BW	WW	YW	MK	CED	CEM	CW	MARB	REA	FT
93	712	1357	4.8	84	139	27	-7.0	4.0	60	-0.09	0.67	-0.006



BA 167L

167 **Belvin Limestone 3167**
 MALE #2309511 JANUARY 20 2023 BA 167L PEN 1

Hoover No Doubt
HART LIMIT UP 0506
Hart Whitney 3206

Baldrige Discovery D121
BELVIN LADY BLOSSOM 209'21
Belvin Lady Blossom 147'13

Mogck Bullseye
Miss Blackcap Ellston J2
Connealy Cavalry 1149
Hart Whitney 0244
Fortunes Conquest 224
Baldrige Lady X200
Belvin Heavy Hitter 203'10
Belvin Lady Blossom 17'08

Limestone 3167 is a top Limit Up son and a true sale feature. Much like his sire, he is very complete with added dimension and dense muscle, coupled with a very attractive and eye catching phenotype. 3167 has been noted from a young age with early maturity and performance. Limit Up consistently offers calving ease, strong end product merit, and dense muscle in a very sound and functional package. His dam is a tight uddered, hard working young female with a bright future in our herd.

BW	ADJ 205	ADJ 365	BW	WW	YW	MK	CED	CEM	CW	MARB	REA	FT
78	840	1356	1.1	68	109	21	9.0	11.0	40	0.81	0.94	-0.017

169 **Belvin Loomis 3169**
 MALE #2309512 JANUARY 20 2023 BA 169L PEN 3

Koupals B&B Titan 3013
LT WARDEN 8316
LT Lucy 4078 TW

Brooking Bank Note 4040
ANCHORAGE JUNE 8152F
Bobo June 0690

Koupals B&B Extra 0011
B&B Blackcap 0068
SA V Resource 1441
LT Lucy 0349
Connealy Earnan 076E
E A ROSE 918
SQ Credence 67S
EXAR June 7341



BA 169L

BW	ADJ 205	ADJ 365	BW	WW	YW	MK	CED	CEM	CW	MARB	REA	FT
78	669	1170	0.6	59	109	21	6.0	10.0	43	0.24	0.59	0.055



topstock

170 **Belvin Livingstone 3170**
 MALE #2309513 JANUARY 21 2023 BA 170L PEN 1

Vermillion Reride F116
BELVIN MAY CITY 0136
 Belvin Georgina 121'17

KR Cash 4003
BELVIN LADY BLOSSOM 95'16
 Belvin Lady Blossom 48'13

Vermillion Re-Ride
 Vermillion Lucy 5087
 HF Syndicate 65B
 Belvin Georgina 45'15
 Barstow Cash
 Summitcrest Elba 1W01
 Belvin Warrior 6'09
 Belvin Lady Blossom 51'07

Livingstone 3170 is another feature May City son who has been a standout all along, with the typical depth and muscle shape of the May City sire group. The dam of 3170 is a front-end cow and the best daughter of the Cash 4003 bull in our herd. Her first 5 calves were all heifers, with female sale features to Parkview Farms and Clydevue Farms, while the other 3 daughters are all at the top of their respective age groups. Between his dam, as well as the cows behind May City, the maternal backing of 3170 is as good as any in the sale.

BW	ADJ 205	ADJ 365	BW	WW	YW	MK	CED	CEM	CW	MARB	REA	FT
86	725	1266	2.0	54	87	18	2.0	6.0	30	0.33	0.61	-0.002

Georgina 121'17 PATERNAL GRANDDAM



Lady Blossom 16'20 MATERNAL SISTER



Lady Blossom 42'18 MATERNAL SISTER



172 Belvin Links 3172

MALE #2309514 JANUARY 21 2023 BA 172L PEN 3

Brooking Firebrand 6068

BROOKING ROLL CALL 9045

Brooking Beauty 333

Baldrige Discovery D121

BELVIN GEORGINA 172'19

Belvin Georgina 17'15

Brooking Bank Note 4040

Brooking Annie K 390

SA V Harvester 0338

TLA Beauty 6R

Fortunes Conquest 224

Baldrige Lady X200

Belvin Tres Marias Patron 205

Belvin Georgina 90'13

BW	ADJ 205	ADJ 365	BW	WW	YW	MK	CED	CEM	CW	MARB	REA	FT
88	726	1309	2.6	55	92	31	4.0	2.0	26	0.23	0.30	0.085



BA 172L

176 Belvin Levels 3176

MALE #2309516 JANUARY 21 2023 BA 176L PEN 3

Spring Cove Reno 4021

BALDRIDGE VEGAS G082

Baldrige Isabel Y69

SA V Pioneer 7301

BELVIN GEORGINA 18'10

Belvin Georgina 18'08

KM Broken Bow 002

Spring Cove Liza 021

Styles Upgrade J59

Baldrige Isabel T935

SA V Final Answer 0035

SA V Blackbird 5297

Belvin Panther 21'04

Belvin Georgina 60'00

BW	ADJ 205	ADJ 365	BW	WW	YW	MK	CED	CEM	CW	MARB	REA	FT
83	785	1304	0.0	53	89	22	4.0	0.0	31	0.22	0.63	0.014



BA 176L

178 Belvin Lubbock 3178

MALE #2309517 JANUARY 21 2023 BA 178L PEN 2

Koupals B&B Titan 3013

LT WARDEN 8316

LT Lucy 4078 TW

KR Cash 4003

BELVIN LADY DI 47'16

Belvin Lady DI 69'14

Koupals B&B Extra 0011

B&B Blackcap 0068

SA V Resource 1441

LT Lucy 0349

Barstow Cash

Summitcrest Elba 1W01

Belvin Warrior 6'09

Belvin Lady DI 22'03

BW	ADJ 205	ADJ 365	BW	WW	YW	MK	CED	CEM	CW	MARB	REA	FT
80	701	1276	3.4	56	105	23	-5.0	1.0	49	0.07	0.63	-0.012



BA 178L





Kenner
top stock

179 **Belvin Lexus 3179**
MALE #2309518 JANUARY 21 2023 BA 179L PEN 1

Woodhill Relevance
WOODHILL REVIVAL H028
Woodhill Evergreen A43-F039

Baldrige Vegas G082
BELVIN BLACKBIRD 65'21
Bar-E-L Blackbird 27F

Connealy Confidence Plus
Woodhill Blackbird X197-Z7
Basin Payweight 1682
Woodhill Evergreen Y10-A43
Spring Cove Reno 4021
Baldrige Isabel Y69
Ring Creek Flynn 25A
Bar-E-L Blackbird 76C

Lexus 3179 is an absolute standout phenotypically, with as much hip, muscle and mass as any bull we've sold. He has the performance numbers and REA to match his powerful, muscular body type, along with ADJ weaning and yearling weights of 825 and 1480. His dam is a moderate framed, awesome uddered daughter of Vegas, who outdid herself on her first calf. The maternal grandam of 3179 came from Bar E-L, and she traces back to the ever popular Natural Law. The maternal strength of Revival, Natural Law, Isabel Y69 and the Blackbird cow family only add to the value of 3179.

BW	ADJ 205	ADJ 365	BW	WW	YW	MK	CED	CEM	CW	MARB	REA	FT
88	825	1480	1.9	75	128	29	4.0	3.0	64	0.80	0.99	0.039

Isabel Y69 GREAT GRAND-DAM



Vegas G082 MATERNAL GRANDSIRE



Holster 0012 MATERNAL BROTHER TO DAM



181 **Belvin Lincoln 3181**
 MALE #2309519 JANUARY 23 2023 BA 181L PEN 2

Brooking Firebrand 6068	Brooking Bank Note 4040
BROOKING ROLL CALL 9045	Brooking Annie K 390
Brooking Beauty 333	SA V Harvester 0338
SA V Pioneer 7301	TLA Beauty 6R
BELVIN LADY BLOSSOM 59'18	SA V Final Answer 0035
Belvin Lady Blossom 37'01	SA V Blackbird 5297
	Leachman Right Time
	Belvin Lady Blossom 66'94

BW	ADJ 205	ADJ 365	BW	WW	YW	MK	CED	CEM	CW	MARB	REA	FT
92	756	1297	2.5	62	100	32	-3.0	4.0	31	0.39	0.24	0.018



BA 182L

182 **Belvin Loophole 3182**
 MALE #2309520 JANUARY 23 2023 BA 182L PEN 2

SS Niagara Z29	Hoover Dam
RIVERBEND EVEREST H1231	Jet SS X144
Riverbend Rita D1008	VA R Generation 2100
Duralta 56S Yellowstone 136X	Riverbend Rita B1156
BELVIN LADY BLOSSOM 157'13	Minburn Yellowstone 56S
Belvin Lady Blossom 135'08	Duralta 32R Alliane 189U
	Belvin Panther 21'04
	Belvin Blossom 52'03

BW	ADJ 205	ADJ 365	BW	WW	YW	MK	CED	CEM	CW	MARB	REA	FT
87	702	1260	3.9	52	91	24	1.0	0.0	50	0.57	0.83	0.030

183 **Belvin Vegas 3183**
 MALE (TWIN) #2309521 JANUARY 23 2023 BA 183L PEN 4

Spring Cove Reno 4021	KM Broken Bow 002
BALDRIDGE VEGAS G082	Spring Cove Liza 021
Baldrige Isabel Y69	Styles Upgrade J59
Belvin Warrior 6'09	Baldrige Isabel T935
BRAESIDE QUEEN GEM 56'11	SA V Heavy Hitter 6347
Braeside Queen Gem 20'06	Belvin Lady Blossom 22'02
	Sunny Panama 135N
	Braeside Queen Gem 17'95

BW	ADJ 205	ADJ 365	BW	WW	YW	MK	CED	CEM	CW	MARB	REA	FT
70	692	1150	2.9	52	86	25	-4.0	-2.0	28	0.77	0.34	-0.004

INTERNATIONAL VISITORS AT **Belvin Angus**





BA 199L



Lucy 22A
DAM

199

Belvin Little Rock 3199

MALE #2309568 JANUARY 25 2023 BA 199L PEN 1

Vermillion Reride F116
BELVIN MAY CITY 0136
Belvin Georgina 121'17

Belvin Panic Switch 2'11
LCL LUCY 22A
HF Lucy 234W

Vermillion Re-Ride
Vermillion Lucy 5087
HF Syndicate 65B
Belvin Georgina 45'15
SA V Pioneer 7301
Belvin Lady Blossom 14'09
HF Kodiak 5R
HF Lucy 164R

BW	ADJ 205	ADJ 365	BW	WW	YW	MK	CED	CEM	CW	MARB	REA	FT
87	703	1192	1.3	47	67	21	3.0	9.0	17	0.21	0.62	-0.012

One of the elite cow makers in the offering is this moderate framed, stout made May City son. Little Rock 3199 has a very attractive look and is fault free in his make up. With modest BW figures, reduced mature size and top 1% dry matter intake, look for 3199 to leave replacements that are the right kind. His dam is one of the very strong females in our program with a perfect udder, bold rib shape, and a feminine look. Her most notable accomplishment would be our high selling bull in 2021, Honey Jack, who commanded \$20,000 to KT Ranches and has done a great job in their program.

201

Belvin Limit Up 3201

MALE #2309569 JANUARY 26 2023 BA 201L PEN 4

Hoover No Doubt
HART LIMIT UP 0506
Hart Whitney 3206

Baldrige Vegas Go82
BELVIN LADY BLOSSOM 47'21
Belvin Lady Blossom 55'18

Mogck Bullseye
Miss Blackcap Ellston J2
Connealy Cavalry 1149
Hart Whitney 0244
Spring Cove Reno 4021
Baldrige Isabel Y69
Musgrave Sky High 1535
Belvin Lady Blossom 23'06

BW	ADJ 205	ADJ 365	BW	WW	YW	MK	CED	CEM	CW	MARB	REA	FT
83	719	1233	2.3	64	114	33	3.0	4.0	49	1.06	0.60	0.029



BA 201L



BA 204L

BW	ADJ 205	ADJ 365	BW	WW	YW	MK	CED	CEM	CW	MARB	REA	FT
88	766	1357	-0.5	66	123	19	8.0	0.0	36	0.93	0.72	0.007

204 **Belvin Labyrinth 3204**
 MALE #2309570 JANUARY 26 2023 BA 204L PEN 3

S S Enforcer E812
RIVERBEND LAWMAN J053
Spruce Mtn Rita 8102

Baldridge Discovery D121
BELVIN MISSIE 9'20
KFC 839L Miss Legacy 019

Sydney Enhance
S S Miss Daybreak K011 3K17
Baldridge Colonel C251
Black Gold Rita 527
Fortunes Conquest 224
Baldridge Lady X200
O C C Legacy 839L
KFC 4532 Miss Rainmaker

Labyrinth 3204 is a long and deep-bodied herd bull candidate, that comes with a large birth to yearling weight spread. 3204 has been noted from an early age for his rapid growth, smooth muscle pattern and attractive look. This top cut Lawman son sports a very elite and balanced set of predictions with top tier growth figures, calving ease, and end product merit all in the top 15% of the Angus database. His moderate framed Discovery dam is an ideal female, while his Granddam is one of the high influencing females in our herd. A maternal brother works at Barrington Ranch Ltd.

205 **Belvin Lake Erie 3205**
 MALE #2309571 JANUARY 27 2023 BA 205L PEN 1

Sitz Stellar 726D
SITZ MAJOR 707F
Sitz Lady 383D

Musgrave Sky High 1535
BELVIN LADY BLOSSOM 148'19
Belvin Lady Blossom 205'12

Mohnen Substantial 272
Sitz Pride 200B
Sitz Bullseye 10594
Sitz Lady 319Y
Musgrave Big Sky
FLAG Queen W 00649
S A V Pioneer 7301
Belvin Lady Blossom 37'01

Lake Erie 3205 is a powerhouse in the Major sire group with lots of body mass, length and depth of body. 3205 has had a husky look from a young age at the side of his Sky High dam, with his added growth and masculine look. His mother is a top-working cow who is very functional with a lot of volume and a great udder, she is an own daughter of 205'12, one of the most productive donor females in our herd. A full brother sold as a sale feature to East & West Ranching Co. Ltd.



BA 205L

BW	ADJ 205	ADJ 365	BW	WW	YW	MK	CED	CEM	CW	MARB	REA	FT
104	765	1346	4.1	71	121	23	-1.0	5.0	46	0.64	0.47	0.063

Lady Blossom 205'12
MATERNAL GRANDDAM





BA 207L

BW	ADJ 205	ADJ 365	BW	WW	YW	MK	CED	CEM	CW	MARB	REA	FT
82	703	1261	-1.0	53	97	23	12.0	8.0	30	0.46	0.80	0.001

207 **Belvin Line Up 3207**
 MALE #2309573 JANUARY 28 2023 BA 207L PEN 1

S S Enforcer E812
RIVERBEND LAWMAN J053
Spruce Mtn Rita 8102

Musgrave Sky High 1535
BELVIN LADY BLOSSOM 113'19
Belvin Lady Blossom 170'17

Sydgen Enhance
S S Miss Daybreak K011 3K17
Baldrige Colonel C251
Black Gold Rita 527
Musgrave Big Sky
Flag Queen W 00649
Belvin Velasquez 203'11
Belvin Lady Blossom 9'11

Line Up 3207 is an eye appealing calving ease son of our new herd sire Lawman, who is noted for both his end product merit and maternal capabilities. 3207 has breed leading CED and BW figures making him a sleep all night heifer bull. 3207 is sound structured, clean fronted and stout made. His young dam is a typical Sky High daughter, with all the qualities of a strong working cow being nice uddered, good footed and fertile. A maternal brother sold in our 2022 sale to Blue Ridge Colony.

210 **Belvin Light Show 3210**
 MALE #2309575 JANUARY 29 2023 BA 210L PEN 2

Sitz Stellar 726D
SITZ MAJOR 707F
Sitz Lady 383D

Poss Maverick
BELVIN ERICA 28'19
Belvin Erica 54'10

Mohnen Substantial 272
Sitz Pride 200B
Sitz Bullseye 10594
Sitz Lady 319Y
Basin Payweight 1682
Poss Pride 5163
HF Tiger 5T
Belvin Erica 2'06

BW	ADJ 205	ADJ 365	BW	WW	YW	MK	CED	CEM	CW	MARB	REA	FT
87	856	1409	1.5	74	120	29	4.0	5.0	56	0.48	0.57	0.033

212 **Belvin Legitimate 3212**
 MALE #2309576 JANUARY 29 2023 BA 212L PEN 4

Sitz Logo 12964
HEIKEN TRADEMARK 1018
JCH HKN Lucy 9397

Sitz Major 707F
BELVIN LADY DI 223'21
Belvin Lady DI 224'19

Sitz Tebow 11860
Sitz Shauna 3152
JCH Chisum 7019
JCH Hazel 6155
Sitz Stellar 726D
Sitz Lady 383D
Belvin Velasquez 203'11
Belvin Lady DI 71'12

BW	ADJ 205	ADJ 365	BW	WW	YW	MK	CED	CEM	CW	MARB	REA	FT
73	709	1262	0.4	62	102	34	9.0	11.0	34	0.35	0.40	0.045



BA 210L



BA 213L

BW	ADJ 205	ADJ 365	BW	WW	YW	MK	CED	CEM	CW	MARB	REA	FT
78	834	1333	2.2	64	113	34	4.0	11.0	45	0.54	0.68	-0.005

213 **Belvin Last Frontier 3213**
 MALE #2309577 JANUARY 30 2023 BA 213L PEN 1

Hoover No Doubt
HART LIMIT UP 0506
 Hart Whitney 3206

Coleman Bravo 6313
BELVIN FOREVER LADY 13'21
 Allandale Forever Lady 38G

Mogck Bullseye
 Miss Blackcap Ellston J2
 Connealy Cavalry 1149
 Hart Whitney 0244
 Coleman Charlo 0256
 Coleman Donna 714
 S A V Seedstock 4838
 Allandale Forever Lady 6Z

Last Frontier 3213 is one of the stoutest and most dense made bulls in the sale, true to his No Doubt x Bravo lineage. This very attractive, heavy muscled bull packs a serious maternal punch with high Milk numbers and reduced mature weight. His first calf dam is a perfect uddered, hard working young cow representing the timeless Forever Lady cow family. With one of the highest ADJ WW in the offering, this Limit Up son is very consistent with his sire group displaying low birth weight, high growth and breed character.

214 **Belvin Lucid 3214**
 MALE #2309578 JANUARY 30 2023 BA 214L PEN 4

Sitz Logo 12964
HEIKEN TRADEMARK 1018
 JCH HKN Lucy 9397

Baldrige Mercenary Doo2
BELVIN ERICA 195'21
 Braeside Erica 115'16

Sitz Tebow 11860
 Sitz Shauna 3152
 JCH Chisum 7019
 JCH Hazel 6155
 EF Commando 1366
 Baldrige Rachel A029
 KR Cash 4003
 Braeside Erica 173'13

BW	ADJ 205	ADJ 365	BW	WW	YW	MK	CED	CEM	CW	MARB	REA	FT
62	755	1286	-3.2	62	99	20	16.0	15.0	39	0.53	0.44	0.032

215 **Belvin Lotto Max 3215**
 MALE #2309579 JANUARY 30 2023 BA 215L PEN 4

Sitz Logo 12964
HEIKEN TRADEMARK 1018
 JCH HKN Lucy 9397

LT Warden 8316
BELVIN LADY BLOSSOM 224'21
 Belvin Lady Blossom 55'09

Sitz Tebow 11860
 Sitz Shauna 3152
 JCH Chisum 7019
 JCH Hazel 6155
 Koupals B&B Titan 3013
 LT Lucy 4078 TW
 Belvin Rebel 33'05
 Belvin Lady Blossom 23'06

BW	ADJ 205	ADJ 365	BW	WW	YW	MK	CED	CEM	CW	MARB	REA	FT
71	745	1271	-0.6	63	113	22	9.0	7.0	47	0.27	0.67	0.048



BA 214L



BA 215L

217 **Belvin Lake District 3217**
 MALE #2319372 JANUARY 30 2023 BA 217L PEN 4

SA V Rainfall 6846
SQUARE B ATLANTIS 8060
 Elbanna of Conanga 1209

Tres Marias 6301 Zorzal
BELVIN TRES MARIAS 6'13
 Tres Marias 6914 Baraja 5526

Coleman Charlo 0256
 SA V Blackcap May 4136
 Connealy Consensus
 Elbasta of Conanga 9703
 Tres Marias 5887 Hornero
 Tres Marias 4850 Wind
 Red Tres Marias 5839 Quebracho
 Tres Marias 4490 Boreas 5 T/E

BW	ADJ 205	ADJ 365	BW	WW	YW	MK	CED	CEM	CW	MARB	REA	FT
73	577	1130	1.8	43	70	19	-2.0	1.0	15	0.52	0.57	0.017

EMBRYO TRANSFER

224 **Belvin Ladd 3224**
 MALE #2309580 FEBRUARY 01 2023 BA 224L PEN 4

Koupals B&B Titan 3013
LT WARDEN 8316
 LT Lucy 4078 TW

Belvin Rebel 33'05
BELVIN LADY BLOSSOM 55'09
 Belvin Lady Blossom 23'06

Koupals B&B Extra 0011
 B&B Blackcap 0068
 SA V Resource 1441
 LT Lucy 0349
 F A R Krugerrand 410H
 Belvin Georgina 81'03
 Belvin Patriarch 5'04
 Belvin Lady Blossom 104'99

BW	ADJ 205	ADJ 365	BW	WW	YW	MK	CED	CEM	CW	MARB	REA	FT
88	709	1251	3.4	46	93	23	-5.0	1.0	44	0.19	0.47	0.023

225 **Belvin Limerick 3225**
 MALE #2309581 FEBRUARY 01 2023 BA 225L PEN 4

EF Commando 1366
BALDRIDGE MERCENARY D002
 Baldridge Rachel A029

Ring Creek El Tigre 9X
BELVIN DUCHESS 150'14
 Belvin Duchess 26'07

EF Complement 8088
 Riverbend Young Lucy W1470
 Baldridge Waylon W34
 Baldridge Rachel X100
 HF El Tigre 28U
 Ring Creek Ambush Lady 10S
 Belvin Panther 21'04
 Belvin Duchess 87'99

BW	ADJ 205	ADJ 365	BW	WW	YW	MK	CED	CEM	CW	MARB	REA	FT
84	729	1242	1.3	49	83	28	3.0	4.0	34	0.76	0.36	0.093

226 **Belvin Lift Me Up 3226**
 MALE #2309582 FEBRUARY 01 2023 BA 226L PEN 3

S S Niagara Z29
RIVERBEND EVEREST H1231
 Riverbend Rita D1008

Poss Maverick
BELVIN ERICA 153'19
 Belvin Erica of RF 117'12

Hoover Dam
 Jet S S X144
 V A R Generation 2100
 Riverbend Rita B1156
 Basin Payweight 1682
 Poss Pride 5163
 Belvin Rebel 33'05
 Erica of Rannoch 710M

Lift Me Up 3226 is a feature Everest son that is very complete and sound structured, with an attractive look. 3226 is a true beef bull that combines great phenotype with a pedigree full of carcass merit. His dam is a hard working young Maverick daughter who consistently calves early, maintains condition, and produces high quality offspring. Maternal brothers have sold to Bar Diamond Ranching Ltd. and Clifton Ranch.



Journalist 10'55 MATERNAL BROTHER



BA 226L

BW	ADJ 205	ADJ 365	BW	WW	YW	MK	CED	CEM	CW	MARB	REA	FT
88	740	1385	2.2	59	113	23	4.0	-3.0	65	0.95	0.91	0.028

229 **Belvin Long Island 3229**
 MALE #2309583 FEBRUARY 02 2023 BA 229L PEN 3

<i>EF Commando 1366</i>	<i>EF Complement 8088</i>
BALDRIDGE MERCENARY D002	<i>Riverbend Young Lucy W1470</i>
<i>Baldridge Rachel A029</i>	<i>Baldridge Waylon W34</i>
<i>Connealy Dateline</i>	<i>Baldridge Rachel X100</i>
ELLIOT 3E LADY HEATHER 4141	<i>D H D Traveler 6807</i>
<i>Poplar MDWS Lady Heather 3W</i>	<i>Eila Eila of Conanga</i>
	<i>SA V Final Answer 0035</i>
	<i>Poplar MDWS Lady Heather 28S</i>



BW	ADJ 205	ADJ 365	BW	WW	YW	MK	CED	CEM	CW	MARB	REA	FT
80	743	1272	-0.8	52	100	32	10.0	8.0	46	0.61	0.59	0.035

232 **Belvin Lock Step 3232**
 MALE #2309585 FEBRUARY 02 2023 BA 232L PEN 3

<i>Spring Cove Reno 4021</i>	<i>KM Broken Bow 002</i>
BALDRIDGE VEGAS G082	<i>Spring Cove Liza 021</i>
<i>Baldridge Isabel Y69</i>	<i>Styles Upgrade J59</i>
<i>Wiwa Creek Monarch 248'12</i>	<i>Baldridge Isabel T935</i>
BELVIN LADY BLOSSOM 114'15	<i>Wiwa Creek Monarch 53'08</i>
<i>Belvin Lady Blossom 28'13</i>	<i>Wiwa Creek Evergreen 623'06</i>
	<i>Belvin Tres Marias Patron 205</i>
	<i>Belvin Lady Blossom 22'02</i>



BW	ADJ 205	ADJ 365	BW	WW	YW	MK	CED	CEM	CW	MARB	REA	FT
92	717	1281	3.6	65	109	23	-3.0	3.0	41	0.24	0.65	-0.019

234 **Belvin Lake Louise 3234**
 MALE #2319346 FEBRUARY 03 2023 BA 234L PEN 4

<i>SA V Rainfall 6846</i>	<i>Coleman Charlo 0256</i>
SQUARE B ATLANTIS 8060	<i>SA V Blackcap May 4136</i>
<i>Elbanna of Conanga 1209</i>	<i>Connealy Consensus</i>
<i>Tres Marias 6301 Zorzal</i>	<i>Elbasta of Conanga 9703</i>
BELVIN TRES MARIAS 6'13	<i>Tres Marias 5887 Hornero</i>
<i>Tres Marias 6914 Baraja 5526</i>	<i>Tres Marias 4850 Wind</i>
	<i>Red Tres Marias 5839 Quebracho</i>
	<i>Tres Marias 4490 Boreas 5 T/E</i>

BW	ADJ 205	ADJ 365	BW	WW	YW	MK	CED	CEM	CW	MARB	REA	FT
85	681	1113	4.3	59	101	25	-4.0	-2.0	43	0.80	0.70	0.012

EMBRYO TRANSFER

CONGRATULATIONS HAYDEN & RILEY ON YOUR 4-H SUCCESS



WITH **Belvin**
 SIRED STEERS

BA



top stock

236 **Belvin Lawless 3236**
 MALE #2309587 FEBRUARY 03 2023 BA 236L PEN 1

Woodhill Relevance
WOODHILL REVIVAL H028
 Woodhill Evergreen A43-F039

BC Lookout 7024
BELVIN 3E BLACK ANGEL 133'18
 Werner Black Angel 1299

Connealy Confidence Plus
 Woodhill Blackbird X197-Z7
 Basin Payweight 1682
 Woodhill Evergreen Y10-A43
 O C C Legend 616L
 Gibbet Hill Mignonne E37
 SA V Net Worth 4200
 Clearwater Black Angel 395

Lawless 3236 is one of the elite Revival sons in the offering, pairing excellent phenotype and genotype. 3236 has an eye-catching presence, exhibiting impressive muscle shape while being soft middled, sound structured, and standing on a perfect foot. With modest BW and top tier performance figures, 3236 sports a well-rounded set of EPD's, with 8 traits in the top 10% of the breed, making him the complete package. Adding to his long list of qualifications is his maternal lineage, supported by the famed Black Angel cow family, who has been responsible for a very potent arsenal of donor females in the breed.

BW	ADJ 205	ADJ 365	BW	WW	YW	MK	CED	CEM	CW	MARB	REA	FT
88	777	1366	2.3	72	132	30	6.0	5.0	62	0.67	0.61	0.043

Black Angel 1299 MATERNAL GRANDDAM



Black Angel 54'18 FULL SISTER TO DAM



Black Angel 3'17 MATERNAL SISTER TO DAM





BA 237L

237 **Belvin La'Rural 3237**
 MALE #2319349 FEBRUARY 04 2023 BA 237L PEN 4

- | | |
|---|---|
| <p>SA V Rainfall 6846
 SQUARE B ATLANTIS 8060
 Elbanna of Conanga 1209</p> | <p>Coleman Charlo 0256
 SA V Blackcap May 4136
 Connealy Consensus
 Elbasta of Conanga 9703
 Tres Marias 5887 Hornero
 Tres Marias 4850 Wind
 Red Tres Marias 5839 Quebracho
 Tres Marias 4490 Boreas 5 T/E</p> |
|---|---|
- Tres Marias 6301 Zorzal
BELVIN TRES MARIAS 6'13
 Tres Marias 6914 Baraja 5526

BW	ADJ 205	ADJ 365	BW	WW	YW	MK	CED	CEM	CW	MARB	REA	FT
98	708	1289	3.2	43	73	27	-4.0	2.0	19	0.64	0.53	0.009

EMBRYO TRANSFER

241 **Belvin Roll Call 3241**
 MALE #2309589 FEBRUARY 04 2023 BA 241L PEN 3

- | | |
|---|--|
| <p>Brooking Firebrand 6068
 BROOKING ROLL CALL 9045
 Brooking Beauty 333</p> | <p>Brooking Bank Note 4040
 Brooking Annie K 390
 SA V Harvester 0338
 TLA Beauty 6R
 Basin Payweight 1682
 Poss Pride 5163
 Belvin Heavy Hitter 203'10
 Belvin Georgina 25'02</p> |
|---|--|
- Poss Maverick
BELVIN GEORGINA 66'19
 Belvin Georgina 162'13

BW	ADJ 205	ADJ 365	BW	WW	YW	MK	CED	CEM	CW	MARB	REA	FT
85	724	1317	1.6	55	92	33	0.0	9.0	37	0.27	0.15	0.064



BA 241L

243 **Belvin Vegas 3243**
 MALE #2309614 FEBRUARY 04 2023 BA 243L PEN 2

- | | |
|---|--|
| <p>Spring Cove Reno 4021
 BALDRIDGE VEGAS G082
 Baldridge Isabel Y69</p> | <p>KM Broken Bow 002
 Spring Cove Liza 021
 Styles Upgrade J59
 Baldridge Isabel T935
 SA V Bismarck 5682
 Belvin Lady Blossom 31'96
 Remitall H Rachis 21R
 Willabar Miss Morrison 103N</p> |
|---|--|
- Belvin Velasquez 203'11
BELVIN MISS MORRISON 130'16
 Remitall Miss Morrison 591U

BW	ADJ 205	ADJ 365	BW	WW	YW	MK	CED	CEM	CW	MARB	REA	FT
95	823	1261	3.4	82	132	28	1.0	0.0	66	0.68	0.47	0.037



BA 243L

245 **Belvin Vegas 3245**
 MALE #2309615 FEBRUARY 05 2023 BA 245L PEN 4

Spring Cove Reno 4021
BALDRIDGE VEGAS G082
Baldrige Isabel Y69

HF Junction 18B
BELVIN HEMBRA 1'16
Belvin Tres Marias Hembra 8314

KM Broken Bow 002
Spring Cove Liza 021
Styles Upgrade J59
Baldrige Isabel T935
Young Dale Yohann 39Y
HF Elsiemere 106W
Tres Marias 8565 Cumbiero 7832
Tres Marias 6932 Zorzal 6546

BW	ADJ 205	ADJ 365	BW	WW	YW	MK	CED	CEM	CW	MARB	REA	FT
88	737	1232	0.7	61	99	32	4.0	3.0	25	0.39	0.27	0.010

246 **Belvin Lahaina 3246**
 MALE #2339409 FEBRUARY 01 2023 BA 246L PEN 6

HF Kodiak 5R
SOO LINE MOTIVE 9016
TLA Beauty 5R

Vermilion Dateline 7078
WILLOW LADY WREN S04
BJ Lady Wren 3'97

Sandy Bar Advantage 43M
Wilbar RubY 955N
RR 7407 Rainmaker 2154
Terrlene Beauty 35F
Connealy Dateline
Vermilion Blackbird 5044
Double A Jazz 44B
BJ Lady Wren 81'85

BW	ADJ 205	ADJ 365	BW	WW	YW	MK	CED	CEM	CW	MARB	REA	FT
84	676	1152	1.2	52	73	27	5.0	7.0	31	0.21	0.44	0.035

EMBRYO TRANSFER

248 **Belvin Lillooet 3248**
 MALE #2309617 FEBRUARY 06 2023 BA 248L PEN 1

S S Niagara Z29
RIVERBEND EVEREST H1231
Riverbend Rita D1008

SAC Conversation
BELVIN 3E ERROLINE 129'18
Belvin 3E Erroline 48'16

Hoover Dam
Jet S S X144
V A R Generation 2100
Riverbend Rita B1156
Silveiras Conversion 8064
Laftins Farrah 0250
KR Cash Flow M1C
KFC 839L Erroline 0184X

BW	ADJ 205	ADJ 365	BW	WW	YW	MK	CED	CEM	CW	MARB	REA	FT
83	819	1400	3.3	75	115	17	6.0	1.0	51	0.46	1.05	0.009

Lillooet 3248 is high indexing and big spread Everest son who has been an early favorite. 3248 sports a ribeye EPD in the top 1% of the breed and will add red meat and carcass weight to his offspring. This high growth herd sire prospect offers a very balanced and elite set of predictions, including leading WW and Docility. His dam is a very moderate, feminine female that is perfect uddered and comes from a productive cow family. Maternal sibs have been selected by Puhallo Angus and Bar T5 Farms.



249 **Belvin Louisiana 3249**
 MALE #2309618 FEBRUARY 07 2023 BA 249L PEN 3

SS Enforcer E812
RIVERBEND LAWMAN J053
Spruce Mtn Rita 8102

HF Junction 18B
BELVIN EMBLYNETTE 62'18
Belvin Emblynette 64'14

Sydgen Enhance
SS Miss Daybreak K011 3K17
Baldrige Colonel C251
Black Gold Rita 527
Young Dale Yohann 39Y
HF Elsiemere 106W
Duralta 56S Yellowstone 136X
Belvin Emblynette 208'11

BW	ADJ 205	ADJ 365	BW	WW	YW	MK	CED	CEM	CW	MARB	REA	FT
85	728	1229	0.2	51	92	24	3.0	1.0	28	0.79	0.38	0.005



BA 249L

253 **Belvin Lump Sum 3253**
 MALE #2309619 FEBRUARY 08 2023 BA 253L PEN 4

Woodhill Relevance
WOODHILL REVIVAL H028
Woodhill Evergreen A43-F039

HF Junction 18B
BELVIN LADY BLOSSOM 202'19
Belvin Lady Blossom 4'10

Connealy Confidence Plus
Woodhill Blackbird X197-Z7
Basin Payweight 1682
Woodhill Evergreen Y10-A43
Young Dale Yohann 39Y
HF Elsiemere 106W
S A V Saint Anthony 5670
Belvin Lady Blossom 31'96

BW	ADJ 205	ADJ 365	BW	WW	YW	MK	CED	CEM	CW	MARB	REA	FT
77	666	1168	-1.3	44	74	30	11.0	14.0	28	0.80	0.59	0.039



BA 255L

255 **Belvin Leatherman 3255**
 MALE #2309620 FEBRUARY 08 2023 BA 255L PEN 3

EF Commando 1366
BALDRIDGE MERCENARY D002
Baldrige Rachel A029

Soo Line Motive 9016
J SQUARE S ELLEN 506C
Northern View Ruth 82Z

EF Complement 8088
Riverbend Young Lucy W1470
Baldrige Waylon W34
Baldrige Rachel X100
HF Kodiak 5R
TLA Beauty 5R
Sitz Upward 307R
Northern View Ruth 84Z

BW	ADJ 205	ADJ 365	BW	WW	YW	MK	CED	CEM	CW	MARB	REA	FT
88	689	1167	0.5	56	102	25	9.0	7.0	45	0.93	0.63	0.035



BA 268L

268 **Belvin Lawman 3268**
 MALE #2309627 FEBRUARY 12 2023 BA 268L PEN 4

SS Enforcer E812
RIVERBEND LAWMAN J053
Spruce Mtn Rita 8102

Musgrave Sky High 1535
BELVIN QUEEN 73'18
Belvin Queen 63'15

Sydgen Enhance
SS Miss Daybreak K011 3K17
Baldrige Colonel C251
Black Gold Rita 527
Musgrave Big Sky
Flag Queen W 00649
Duralta 56S Yellowstone 136X
Belvin Queen 144'10

BW	ADJ 205	ADJ 365	BW	WW	YW	MK	CED	CEM	CW	MARB	REA	FT
90	721	1180	1.2	54	98	22	1.0	0.0	34	0.85	0.75	0.025

Offering Free delivery in Western Canada





BA 269L

269 **Belvin Laker 3269**
 MALE #2309628 FEBRUARY 13 2023 BA 269L PEN 3

<p><i>EF Commando 1366</i> BALDRIDGE MERCENARY D002 <i>Baldridge Rachel A029</i></p> <p><i>Ring Creek El Tigre 9X</i> BELVIN ERICA 168'14 <i>MJT Erica 746U</i></p>	<p><i>EF Complement 8088</i> <i>Riverbend Young Lucy W1470</i> <i>Baldridge Waylon W34</i> <i>Baldridge Rachel X100</i> <i>HF El Tigre 28U</i> <i>Ring Creek Ambush Lady 10S</i> <i>LLB 114P Bando 571S</i> <i>MJT Erica 377R</i></p>
---	--

BW	ADJ 205	ADJ 365	BW	WW	YW	MK	CED	CEM	CW	MARB	REA	FT
84	711	1206	1.7	46	83	29	6.0	10.0	51	0.48	0.70	0.057

275 **Belvin Everest 3275**
 MALE #2309630 FEBRUARY 17 2023 BA 275L PEN 4

<p><i>S S Niagara Z29</i> RIVERBEND EVEREST H1231 <i>Riverbend Rita D1008</i></p> <p><i>Montana Octane 6121</i> BELVIN ELLEN 194'20 <i>J Square S Ellen 506C</i></p>	<p><i>Hoover Dam</i> <i>Jet S S X144</i> <i>V A R Generation 2100</i> <i>Riverbend Rita B1156</i> <i>JMB Traction 292</i> <i>K C F Miss Absolute A198</i> <i>Soo Line Motive 9016</i> <i>Northern View Ruth 82Z</i></p>
--	--

BW	ADJ 205	ADJ 365	BW	WW	YW	MK	CED	CEM	CW	MARB	REA	FT
89	715	1167	3.1	69	112	32	4.0	4.0	51	0.80	0.97	0.038

287 **Belvin Lucknow 3287**
 MALE #2319358 FEBRUARY 22 2023 BA 287L PEN 4

<p><i>SA V Rainfall 6846</i> SQUARE B ATLANTIS 8060 <i>Elbanna of Conanga 1209</i></p> <p><i>Belvin Panic Switch 2'11</i> BELVIN GEORGINA 45'15 <i>Belvin Georgina 60'00</i></p>	<p><i>Coleman Charlo 0256</i> <i>SA V Blackcap May 4136</i> <i>Connealy Consensus</i> <i>Elbasta of Conanga 9703</i> <i>SA V Pioneer 7301</i> <i>Belvin Lady Blossom 14'09</i> <i>G D A R Rolls Royce 203</i> <i>Belvin Georgina 52'95</i></p>
--	---

BW	ADJ 205	ADJ 365	BW	WW	YW	MK	CED	CEM	CW	MARB	REA	FT
82	747	1207	1.9	57	100	24	0.0	10.0	21	0.58	0.43	0.024



BA 275L

EMBRYO TRANSFER



289 **Belvin Line of Fire 3289**
 MALE #2311923 FEBRUARY 22 2023 BA 289L PEN 3

Woodhill Relevance
WOODHILL REVIVAL H028
Woodhill Evergreen A43-F039

Baldridge Discovery D121
BELVIN GEORGINA 164'18
Belvin Georgina 21'15

Connealy Confidence Plus
Woodhill Blackbird X197-Z7
Basin Payweight 1682
Woodhill Evergreen Y10-A43
Fortunes Conquest 224
Baldridge Lady X200
Belvin Tres Marias Patron 205
Belvin Georgina 21'13

Line Of Fire 3289 is one of the elite herd sire prospects in the offering combining eye appeal, muscle mass, calving ease, and maternal power. His young Discovery sired dam is one of the featured young cows in our program and was selected as the pick of our cowherd by KT Ranches. 3289 offers double-digit calving ease coupled with solid performance, reduced mature height, and eye-catching phenotype making him a very balanced and versatile breeding piece. A maternal brother sold as a feature in last years offering to Box Elder Colony.

BW	ADJ 205	ADJ 365	BW	WW	YW	MK	CED	CEM	CW	MARB	REA	FT
76	698	1285	0.0	59	114	25	11.0	11.0	37	0.93	0.20	0.085

Georgina 164'18 DAM



Georgina 171'20 MATERNAL SISTER



Belvin Kent 2196 MATERNAL BROTHER



296 Belvin Lake Havasu 3296

MALE #2309637 MARCH 02 2023 BA 296L PEN 4

Spring Cove Reno 4021

BALDRIDGE VEGAS G082

Baldrige Isabel Y69

S A V Bismarck 5682

BELVIN LADY BLOSSOM 37'14

Belvin Lady Blossom 31'96

KM Broken Bow 002

Spring Cove Liza 021

Styles Upgrade J59

Baldrige Isabel T935

G A R Grid Maker

S A V Abigale 0451

Leachman Right Time

Belvin Lady Blossom 40'93

BW	ADJ 205	ADJ 365	BW	WW	YW	MK	CED	CEM	CW	MARB	REA	FT
78	714	1301	-0.1	53	89	29	5.0	6.0	21	0.35	0.69	-0.035

305 Belvin Lafleur 3305

MALE #2309642 MARCH 10 2023 BA 305L PEN 6

Spring Cove Reno 4021

BALDRIDGE VEGAS G082

Baldrige Isabel Y69

Wiwa Creek Monarch 248'12

BELVIN ANDRIA 48'15

Belvin Tres Marias Andria 7313

KM Broken Bow 002

Spring Cove Liza 021

Styles Upgrade J59

Baldrige Isabel T935

Wiwa Creek Monarch 53'08

Wiwa Creek Evergreen 623'06

Tres Marias 6301 Zorzal

Tres Marias 7358 La Andria T/E

BW	ADJ 205	ADJ 365	BW	WW	YW	MK	CED	CEM	CW	MARB	REA	FT
80	757	1281	-1.0	64	100	25	8.0	13.0	34	0.65	0.66	0.000

313 Belvin Liberate 3313

MALE #2309648 MARCH 20 2023 BA 313L PEN 4

Fortunes Conquest 224

BALDRIDGE DISCOVERY D121

Baldrige Lady X200

Wiwa Creek Monarch 248'12

BELVIN EUROTIA 77'15

LLB Enchant Trojan Erica 339A

Connealy Confidence 0100

Fortunes 4412 Ethelda 742

Styles Upgrade J59

Baldrige Lady S848

Wiwa Creek Monarch 53'08

Wiwa Creek Evergreen 623'06

Spruce View Kodiak 33X

Curraghdale Eurotia 22W

BW	ADJ 205	ADJ 365	BW	WW	YW	MK	CED	CEM	CW	MARB	REA	FT
95	769	1255	1.5	48	75	28	10.0	7.0	25	0.44	0.37	0.035



BA 313L

304 Belvin LA Long Ryder 3304

MALE #2309641 MARCH 10 2023 BA 304L PEN 4

S S Niagara Z29

RIVERBEND EVEREST H1231

Riverbend Rita D1008

SAC Conversation

BELVIN LADY BLOSSOM 57'18

Belvin Lady Blossom 54'16

Hoover Dam

Jet S S X144

V A R Generation 2100

Riverbend Rita B1156

Silveiras Conversion 8064

Laflins Farrah 0250

HF Junction 18B

Belvin Lady Blossom 76'12

BW	ADJ 205	ADJ 365	BW	WW	YW	MK	CED	CEM	CW	MARB	REA	FT
83	787	1334	3.2	59	104	27	1.0	2.0	42	0.38	0.91	0.028



It is a great pleasure to be working with the hard-working Hamilton and Elliot families at Belvin Angus. The Belvin name carries great history within the Angus breed and has offered quality angus genetics to the cattle industry for many years. There is a large selection of bulls on offer at Belvin Angus this year, and the quality is very consistent across the entire group.

The bulls are raised on pasture with nothing but their mother's milk during the summer months. The pairs consume free choice mineral throughout the grazing months and are also on a year-round organic mineral program, enhancing the sale bulls' health and immunity. The bulls transition to a forage-based, total mixed ration once they are weaned.

The total mixed ration is designed to promote lean muscle growth, ensuring longevity is the main priority when developing the bulls. The bulls total mixed ration also contains a chelated mineral package throughout the feeding period which enhances the bull's immunity and complements their growth patterns as they develop. Rumen health is continuously being monitored during the bulls feeding period and is adjusted accordingly to meet environmental and seasonal challenges.

If you have any questions about the nutrition or sale bulls, please feel free to contact me.

Best of luck to the Belvin Angus crew with this year's sale bulls!



© More Than Just Feed

Brayden Schmidt
Beef Advisor
(403) 439-0043

brayden.schmidt@bullseyefeeds.ca

BA extra age bulls



DESIGNED TO COVER MORE COWS THIS SPRING



BA 404K

BW	ADJ 205	ADJ 365	BW	WW	YW	MK	CED	CEM	CW	MARB	REA	FT
86	600	1135	2.2	36	63	21	2.0	4.0	17	0.45	0.29	0.020

404 **Belvin Kick Start 2404**
 MALE #2294106 APRIL 26 2022 BA 404K PEN 5

Don Jose 176 Maxi

TRES MARIAS 8155 CANDELERO

Tres Marias 7358 LA Andria

Tres Marias 8565 Cumbiero 7832

TRES MARIAS 9402 CUMBIERO 6816

Tres Marias 6816 Falucho 6084

O C C Headliner 661H

Tres Marias 6204 Hornero 5314

Tres Marias 5837 Cumelen

Tres Marias 6226 CalAndria

S A V Net Worth 4200

Tres Marias 7832 Credito 7244

Tres Marias 5893 Falucho

Tres Marias 6084 Wind 4492

Kick Start 2404 is a stout, dense made son of the South American maternal sire Candelerero. 2404 is an embryo from the renowned Tres Marias program and fits the mold of cattle they produce with true Angus character, ease of fleshing and a maternal driven design. Look to this extra age bull to add bone, muscle and reduce dry matter intake while improving udder quality. 2404 offers a very outcross pedigree to the Canadian herd book and a unique opportunity to add a 100% Argentine pedigree. **EMBRYO TRANSFER**

412 **Belvin King City 2412**
 MALE #2282679 MAY 29 2022 BA 412K PEN 5

Woodhill Relevance

WOODHILL REVIVAL H028

Woodhill Evergreen A43-F039

Belvin Velasquez 203'11

BELVIN EMBLYNETTE 21'17

Belvin Emblynette 208'11

Connealy Confidence Plus

Woodhill Blackbird X197-Z7

Basin Payweight 1682

Woodhill Evergreen Y10-A43

S A V Bismarck 5682

Belvin Lady Blossom 31'96

Belvin Rebel 33'05

S A V Emblynette 5486

King City 2412 is a performance orientated Revival son that offers top growth indexes while maintaining calving ease and a modest BW. This big outlined bull is easy to find in the pen with tremendous length of body coupled with an athletic design. 2412 had the largest REA of his calf crop at 13.88 to index 124. The dam of 2412 is a moderate framed, perfected uddered Velasquez daughter that is built to last and produce. A maternal brother was a past sale feature to East & West Ranching Co. Ltd.



BA 412K

BW	ADJ 205	ADJ 365	BW	WW	YW	MK	CED	CEM	CW	MARB	REA	FT
82	758	1293	1.4	56	98	28	8.0	12.0	53	0.63	0.92	0.057



BA 418K

418 **Belvin K Mountain 2418**
 MALE #2282682 JUNE 03 2022 BA 418K PEN 5

Woodhill Relevance
WOODHILL REVIVAL H028
 Woodhill Evergreen A43-F039

HF Syndicate 65B
BELVIN LADY BLOSSOM 256'17
 Belvin Lady Blossom 33'15

Connealy Confidence Plus
 Woodhill Blackbird X197-Z7
 Basin Payweight 1682
 Woodhill Evergreen Y10-A43
 HF Syndicate 213Z
 HF Blackbird 97S
 Belvin Panic Switch 2'11
 Belvin Lady Blossom 184'10

2418 is an extra age Revival son who covers all the bases, with calving ease and solid growth figures to make him a versatile breeding tool. This easy fleshing, smooth made bull is very sound structured and great footed with noted docility. His moderate framed Syndicate dam is a perfect uddered female, while his maternal grandam is one of the feature females in our herd with 2 sons sold in past sales to Ellis Cattle Co. Maternal brothers to 2418 are working for Klautd Ranches and the Chotowetz Family.

BW	ADJ 205	ADJ 365	BW	WW	YW	MK	CED	CEM	CW	MARB	REA	FT
83	639	1202	1.6	58	105	30	6.0	11.0	50	0.49	0.38	0.069

422 **Belvin Revival 2422**
 MALE #2282685 JUNE 10 2022 BA 422K PEN 5

Woodhill Relevance
WOODHILL REVIVAL H028
 Woodhill Evergreen A43-F039

LT Warden 8316
BELVIN ERELLA 320'20
 Elliot 3E Erella 03X

Connealy Confidence Plus
 Woodhill Blackbird X197-Z7
 Basin Payweight 1682
 Woodhill Evergreen Y10-A43
 Koupals B&B Titan 3013
 LT Lucy 4078 TW
 SA V Final Answer 0035
 Willow Erella R10



BA 422K

BW	ADJ 205	ADJ 365	BW	WW	YW	MK	CED	CEM	CW	MARB	REA	FT
68	634	1081	-1.4	54	99	27	9.0	12.0	32	0.77	0.64	0.030



BA 423K

BW	ADJ 205	ADJ 365	BW	WW	YW	MK	CED	CEM	CW	MARB	REA	FT
86	707	1187	2.3	49	74	29	4.0	10.0	24	0.30	0.14	0.024

423 **Belvin Kraken 2423**
 MALE #2282781 JUNE 12 2022 BA 423K PEN 5

Brooking Firebrand 6068
BROOKING ROLL CALL 9045
 Brooking Beauty 333

Duralta 56S Yellowstone 136X
BELVIN GEORGINA 71'15
 Belvin Georgina 33'12

Brooking Bank Note 4040
 Brooking Annie K 390
 SA V Harvester 0338
 TLA Beauty 6R
 Minburn Yellowstone 56S
 Duralta 32R Alliane 189U
 Ring Creek El Tigre 9X
 Belvin Georgina 18'10

Kraken 2423 is a feature bull in the extra age pen, he is big topped and long bodied. Noted from a young age, 2423 has a powerful makeup and an athletic design with perfect feet, much like his sire Roll Call. 2423 is backed by one of the top cow lines on our ranch responsible for many sale features to great programs across western Canada. The mother of 2434 is a long bodied, reliable Yellowstone daughter who has a beautiful udder and great disposition, her sons are working at the Clifton Ranch and the Barrington Ranch Ltd.

426 **Belvin Roll Call 2426**
 MALE #2282783 JUNE 19 2022 BA 426K PEN 5

Brooking Firebrand 6068
BROOKING ROLL CALL 9045
 Brooking Beauty 333

HF Junction 18B
BELVIN LADY BLOSSOM 301'18
 Belvin Lady Blossom 28'13

Brooking Bank Note 4040
 Brooking Annie K 390
 SA V Harvester 0338
 TLA Beauty 6R
 Young Dale Yohann 39Y
 HF Elsiemere 106W
 Belvin Tres Marias Patron 205
 Belvin Lady Blossom 22'02

2426 is another Roll Call son that fits his mold to a tee; he is hairy, thick made and heavy boned. This powerful bull stands on good feet and will sire a stout set of calves. This square hipped bull is the kind that will fit any environment and work in tough county, he is one of the most intriguing bulls in the pen. 2426 is backed by one of the time-tested cow families on our ranch, stemming back to the herd matriarch and herd bull producing Lady Blossom 22'02.



BA 426K

BW	ADJ 205	ADJ 365	BW	WW	YW	MK	CED	CEM	CW	MARB	REA	FT
88	652	1143	0.8	37	67	32	6.0	9.0	8	0.20	0.23	0.041



BA 427K

BW	ADJ	ADJ	BW	WW	YW	MK	CED	CEM	CW	MARB	REA	FT
72	205	365	0.0	66	121	27	12.0	9.0	52	0.30	0.42	0.048

427 **Belvin Knife River 2427**
 MALE #2282784 JUNE 26 2022 BA 427K PEN 5

Woodhill Relevance
WOODHILL REVIVAL H028
Woodhill Evergreen A43-F039

Baldrige Discovery D121
BELVIN ROSEBUD 315'20
Belvin 3E Rosebud 261'17

Connealy Confidence Plus
Woodhill Blackbird X197-Z7
Basin Payweight 1682
Woodhill Evergreen Y10-A43
Fortunes Conquest 224
Baldrige Lady X200
HF Junction 18B
KFC 7549 Rosebud 0122X

This front-end Revival son boasts excellent performance and calving ease, while being sound and free moving. 2427 has the top performance indexes of his calf crop for WW and YW, with a WW index of 114 and a YW index of 117, all as a heifer's first calf. Like his sire, 2427 has a big top and a herd bull look. He will also increase maternal traits for milk and fertility. 2427 will be a very versatile breeding tool with predictions in the top percentiles of the breed for CED, BW, WW, YW, RADG and HPG.

428 **Belvin Kettle River 2428**
 MALE #2293237 JUNE 26 2022 BA 428K PEN 5

SA V Rainfall 6846
SQUARE B ATLANTIS 8060
Elbanna of Conanga 1209

Tres Marias 6301 Zorzal
BELVIN TRES MARIAS 6'13
Tres Marias 6914 Baraja 5526

Coleman Charlo 0256
SA V Blackcap May 4136
Connealy Consensus
Elbasta of Conanga 9703
Tres Marias 5887 Hornero
Tres Marias 4850 Wind
Red Tres Marias 5839 Quebracho
Tres Marias 4490 Boreas 5 T/E

Kettle River 2428 is a feature son of the maternal driven herd sire Atlantis, crossed with our Argentine bred donor female 6'13, who is an own daughter of the world renowned Zorzal. This combination will be sure to leave you an outstanding set of females with reduced mature size and fleshing ability. 2428 is a well-balanced herd sire prospect who is very fault free from the ground up. Maternal siblings have been selected by Flying E Rancho and international customers Manuel Herrera, Luis Pacheco, and Alfonso Paez of Mexico.

Maternal Brothers sell as lots 58, 217, 234, 237, and 434. EMBRYO TRANSFER



BA 428K

BW	ADJ	ADJ	BW	WW	YW	MK	CED	CEM	CW	MARB	REA	FT
90	205	365	3.2	49	87	15	-2.0	-1.0	30	0.50	0.47	0.015



top stock

430 **Belvin Knob Creek 2430**
 MALE #2282785 JUNE 28 2022 BA 430K PEN 5

Woodhill Relevance
WOODHILL REVIVAL H028
Woodhill Evergreen A43-F039

SA V Resource 1441
BELVIN 3E LEMAY 250'17
Elliot 3E Lemay 1029

Connealy Confidence Plus
Woodhill Blackbird X197-Z7
Basin Payweight 1682
Woodhill Evergreen Y10-A43
Rito 707 of Ideal 3407 7075
SA V Blackcap May 4136
SA V Bismarck 5682
Willow Lemay T07

Knob Creek 2430 is a very exciting herd sire prospect combing our multi trait sire Revival with the breed legends Resource and Bismarck. 2430 puts it all together from the ground up, with excellent feet, sound structure, added muscle and an attractive look. This large spread bull combines top calving ease, strong growth figures and breed leading carcass traits for both marbling and REA. A full brother to his broody dam was a sale feature in our 2018 Bull Sale, who sold for \$15,500 to Mantei Farms Angus.

BW	ADJ 205	ADJ 365	BW	WW	YW	MK	CED	CEM	CW	MARB	REA	FT
88	628	1136	1.3	58	115	29	11.0	12.0	52	1.06	0.74	0.088

Revival H028 SIRE



Resource 1441 MATERNAL GRANDSIRE



Dillinger 6215 FULL BROTHER TO DAM



432 Belvin Kicking Horse 2432

MALE #2288651 JULY 01 2022 BA 432K PEN 5

Woodhill Relevance

WOODHILL REVIVAL H028

Woodhill Evergreen A43-F039

Poss Maverick

BELVIN BLACK ANGEL 303'20

Belvin 3E Black Angel 3'17

Connealy Confidence Plus

Woodhill Blackbird X197-Z7

Basin Payweight 1682

Woodhill Evergreen Y10-A43

Basin Payweight 1682

Poss Pride 5163

Soo Line Motive 9016

Werner Black Angel 1299



BA 432K

BW	ADJ 205	ADJ 365	BW	WW	YW	MK	CED	CEM	CW	MARB	REA	FT
70	718	1165	-1.9	55	90	26	13.0	15.0	43	0.82	0.45	0.089

434 Belvin Kalamalka 2434

MALE #2293238 JULY 05 2022 BA 434K PEN 5

S A V Rainfall 6846

SQUARE B ATLANTIS 8060

Elbanna of Conanga 1209

Tres Marias 6301 Zorzal

BELVIN TRES MARIAS 6'13

Tres Marias 6914 Baraja 5526

Coleman Charlo 0256

S A V Blackcap May 4136

Connealy Consensus

Elbasta of Conanga 9703

Tres Marias 5887 Hornero

Tres Marias 4850 Wind

Red Tres Marias 5839 Quebracho

Tres Marias 4490 Boreas 5 T/E



BA 434K

BW	ADJ 205	ADJ 365	BW	WW	YW	MK	CED	CEM	CW	MARB	REA	FT
92	618	1021	3.1	40	71	28	-3.0	1.0	18	0.38	0.44	0.000

EMBRYO TRANSFER

439 Belvin King Tut 2439

MALE #2282788 JULY 11 2022 BA 439K PEN 5

Brooking Firebrand 6068

BROOKING ROLL CALL 9045

Brooking Beauty 333

KR Cash 4003

BELVIN TORCAZA 58'16

Belvin Torcaza 147'14

Brooking Bank Note 4040

Brooking Annie K 390

S A V Harvester 0338

TLA Beauty 6R

Barstow Cash

Summitcrest Elba 1W01

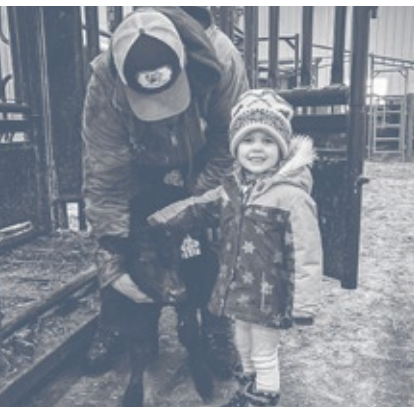
Belvin Velasquez 203'11

Belvin Tres Maria Torcaza 201W



BA 439K

BW	ADJ 205	ADJ 365	BW	WW	YW	MK	CED	CEM	CW	MARB	REA	FT
96	714	1183	1.2	48	78	24	1.0	-1.0	17	-0.12	0.43	0.037





— REPRESENTING OUR FOUNDATION COW FAMILIES —

open
B heifers
A



BA 3006K

BW	ADJ 205	ADJ 365	BW	WW	YW	MK	CED	CEM	CW	MARB	REA	FT
82	635		5.1	78	127	23	-5.0	0.0	59	0.15	0.66	-0.013

6

Belvin Lady Blossom 6'23

FEMALE #2329945 DECEMBER 16 2022 BA 3006K

Poss Easy Impact 0119

BALDRIDGE ALTERNATIVE E125

Baldridge Blackbird A030

SA V Pioneer 7301

BELVIN LADY BLOSSOM 44'14

Belvin Lady Blossom 37'01

Poss Total Impact 745

Poss Elmaretta 736

Hoover Dam

Baldridge Blackbird X89

SA V Final Answer 0035

SA V Blackbird 5297

Leachman Right Time

Belvin Lady Blossom 66'94

Lady Blossom 6'23 is a growthy, powerful Alternative daughter. Her dam is a CAA Elite Dam and donor in our program, with sons selling to Klaudt Ranches (3), East & West Ranching Co. Ltd., Barrington Ranch Ltd., Ilnicki Ranch and Vandenhoven Farms. A full sister to 6'23 weaned off one of our top heifer calves last fall. **EMBRYO TRANSFER**

28

Belvin Queen Gem 28'23

FEMALE #2316783 DECEMBER 28 2022 BA 3028K

Koupals B&B Titan 3013

LT WARDEN 8316

LT Lucy 4078 TW

KR Cash 4003

BELVIN QUEEN GEM 75'16

Braeside Queen Gem 41'13

Koupals B&B Extra 0011

B&B Blackcap 0068

SA V Resource 1441

LT Lucy 0349

Barstow Cash

Summitcrest Elba 1W01

Belvin Panic Switch 2'11

Braeside Queen Gem 56'11

Queen Gem 28'23 is a broody Warden daughter. The Warden females are power cows who still have nice udders and a good look. Maternal sisters to 28'23 have sold to Puhallo Angus and Fahey Cattle Co. through our spring sales, while another maternal sister was a sale feature to Arntzen Angus in our 2021 female sale.



BA 3028K

BW	ADJ 205	ADJ 365	BW	WW	YW	MK	CED	CEM	CW	MARB	REA	FT
88	635		3.0	55	102	26	-6.0	3.0	45	0.36	0.64	0.015



BA 72L

BW	ADJ 205	ADJ 365	BW	WW	YW	MK	CED	CEM	CW	MARB	REA	FT
80	638		3.5	75	129	26	-3.0	8.0	61	0.76	0.61	0.019

72 **Belvin Lady Blossom 72'23**
 FEMALE #2317144 JANUARY 05 2023 BA 72L

Hoover No Doubt
HART LIMIT UP 0506
Hart Whitney 3206

Sitz Major 707F
BELVIN LADY BLOSSOM 129'21
Belvin Lady Blossom 142'19

Mogck Bullseye
Miss Blackcap Ellston J2
Connealy Cavalry 1149
Hart Whitney 0244
Sitz Stellar 726D
Sitz Lady 383D
Poss Maverick
Belvin Lady Blossom 17'08

The first daughter of Limit Up to sell, Lady Blossom 72'23 is good footed and dense made like her brothers in this sale. The addition of Major on the dams side only increases the structural quality. The performance numbers for 72'23 are in the top tier of the breed, and she has the look of a brood cow.

87 **Belvin Lady Blossom 87'23**
 FEMALE #2317153 JANUARY 08 2023 BA 87L

Brooking Firebrand 6068
BROOKING ROLL CALL 9045
Brooking Beauty 333

Poss Maverick
BELVIN LADY BLOSSOM 24'20
Belvin Lady Blossom 59'18

Brooking Bank Note 4040
Brooking Annie K 390
SA V Harvester 0338
TLA Beauty 6R
Basin Payweight 1682
Poss Pride 5163
SA V Pioneer 7301
Belvin Lady Blossom 37'01

An eye-catching Roll Call daughter, Lady Blossom 87'23 is a feature heifer with an attractive phenotype and impressive mass. Her Maverick sired dam has a great udder, and her maternal grandam is a full sister to our 205'12 donor cow, who was a leading producer in our program. With Beauty 333 and the Lady Blossom cow family, 87'23 should make an awesome cow.



BA 87L

BW	ADJ 205	ADJ 365	BW	WW	YW	MK	CED	CEM	CW	MARB	REA	FT
73	621		0.8	60	99	33	5.0	8.0	34	0.69	0.27	0.050



Knoxville 2019 MATERNAL BROTHER



BA 109L

BW	ADJ 205	ADJ 365	BW	WW	YW	MK	CED	CEM	CW	MARB	REA	FT
64	576		0.0	61	110	28	6.0	10.0	54	0.59	0.77	0.043

109 **Belvin Lady Blossom 109'23**
 FEMALE #2317281 JANUARY 11 2023 BA 109L

Woodhill Relevance
WOODHILL REVIVAL H028
 Woodhill Evergreen A43-F039

Sitz Major 707F
BELVIN LA LADY BLOSSOM 53'20
 Belvin Lady Blossom 57'18

Connealy Confidence Plus
 Woodhill Blackbird X197-Z7
 Basin Payweight 1682
 Woodhill Evergreen Y10-A43
 Sitz Stellar 726D
 Sitz Lady 383D
 SAC Conversation
 Belvin Lady Blossom 54'16

Lady Blossom 109'23 definitely fits the mold of what the Revival daughters look like as she is a long bodied and feminine. We think the Revival daughters will make ideal Angus cows. Her dam is a front end Major daughter, whose first calf sold last year to East & West Ranching Co. Ltd. as one of the sale highlights.



BA 115L

115 **Belvin Marylee 115'23**
 FEMALE #2317283 JANUARY 12 2023 BA 115L

Woodhill Relevance
WOODHILL REVIVAL H028
 Woodhill Evergreen A43-F039

Belvin Panic Switch 2'11
BELVIN MARYLEE 5'16
 Belvin Marylee 15'14

Connealy Confidence Plus
 Woodhill Blackbird X197-Z7
 Basin Payweight 1682
 Woodhill Evergreen Y10-A43
 SA V Pioneer 7301
 Belvin Lady Blossom 14'09
 Belvin Tres Marias Patron 205
 Belvin Marylee 105'12

BW	ADJ 205	ADJ 365	BW	WW	YW	MK	CED	CEM	CW	MARB	REA	FT
84	620		0.2	61	116	24	6.0	7.0	47	0.77	0.38	0.063



BA 155L

155 **Belvin Queen 155'23**
 FEMALE #2317460 JANUARY 18 2023 BA 155L

Woodhill Relevance
WOODHILL REVIVAL H028
 Woodhill Evergreen A43-F039

Sitz Major 707F
BELVIN QUEEN 28'20
 Belvin Queen 24'18

Connealy Confidence Plus
 Woodhill Blackbird X197-Z7
 Basin Payweight 1682
 Woodhill Evergreen Y10-A43
 Sitz Stellar 726D
 Sitz Lady 383D
 HF Junction 18B
 JS Queen 101

BW	ADJ 205	ADJ 365	BW	WW	YW	MK	CED	CEM	CW	MARB	REA	FT
82	670		1.2	71	124	27	8.5	9.5	51	0.53	0.55	0.052



193 **Belvin Lady Blossom 193'23**
 FEMALE #2319566 JANUARY 24 2023 BA 193L

Hoover No Doubt
HART LIMIT UP 0506
 Hart Whitney 3206

Baldrige Discovery D121
BELVIN LADY BLOSSOM 164'21
 Belvin Lady Blossom 112'14

Mogck Bullseye
 Miss Blackcap Ellston J2
 Connealy Cavalry 1149
 Hart Whitney 0244
 Fortunes Conquest 224
 Baldrige Lady X200
 Ring Creek El Tigre 9X
 Belvin Lady Blossom 29'08

BW	ADJ 205	ADJ 365	BW	WW	YW	MK	CED	CEM	CW	MARB	REA	FT
69	611		0.4	56	97	25	3.0	6.0	37	0.69	0.55	0.005

251 **Belvin Lady Blossom 251'23**
 FEMALE #2319694 FEBRUARY 07 2023 BA 251L

SS Niagara Z29
RIVERBEND EVEREST H1231
 Riverbend Rita D1008

HF Junction 18B
BELVIN LADY BLOSSOM 150'18
 Belvin Lady Blossom 159'15

Hoover Dam
 Jet SS X144
 V A R Generation 2100
 Riverbend Rita B1156
 Young Dale Yohann 39Y
 HF Elsiemere 106W
 LLB Free Wheeler 268S
 Belvin Lady Blossom 37'01

BW	ADJ 205	ADJ 365	BW	WW	YW	MK	CED	CEM	CW	MARB	REA	FT
108	652		7.1	63	112	22	-10.0	-2.0	50	0.32	0.69	0.011

316 **Belvin Lady Blossom 316'23**
 FEMALE #2320159 MARCH 31 2023 BA 316L

Fortunes Conquest 224
BALDRIDGE DISCOVERY D121
 Baldrige Lady X200

SAC Conversation
BELVIN LADY BLOSSOM 42'17
 Belvin Lady Blossom 114'15

Connealy Confidence 0100
 Fortunes 4412 Ethelda 742
 Styles Upgrade J59
 Baldrige Lady S848
 Silveiras Conversion 8064
 Laftins Farrah 0250
 Wiva Creek Monarch 248'12
 Belvin Lady Blossom 28'13

Lady Blossom 316'23 is an extremely fancy made end of March heifer, one of the most eye appealing in the group. Discovery daughters are low maintenance, feminine, strong producing cows. The dam of 316'23 was the \$26,000 High Selling Female in the 2018 Angus Collection Sale to Bova AI of Ireland and Coul Angus of Scotland, where she is a donor in their operations.



Lady Blossom 42'17 DAM



BW	ADJ 205	ADJ 365	BW	WW	YW	MK	CED	CEM	CW	MARB	REA	FT
80	599		2.5	49	85	26	4.0	5.0	28	0.24	0.77	0.019

MATERNAL FUNCTION AND CARCASS MERIT.
THE PERFECT PAIR.



Marbling is the No. 1 reason cattle don't make the *Certified Angus Beef*® brand.
Achieve top maternal performance in tandem with improved carcass traits.

CABcattle.com



Driving the science of better breeding

There's little room for error in the cattle business. Producers need the most advanced information to make smart selection decisions, and Angus Genetics Inc. (AGI) provides it through genomic-enhanced expected progeny differences (GE-EPDs).

GE-EPDs have become the industry standard for herd improvement, building on decades of science-backed genetic evaluation tools originated and maintained through the American Angus Association®, home to the largest and ever-growing single-breed beef cattle database.

EPDs that traditionally contained all pedigree, performance and progeny information now also include results from available genomic, or DNA, tests. Breeders who use genomic technology give buyers access to AGI-generated GE-EPDs that provide:

- Increased predictability and decreased risk for young and unproven animals due to enhanced accuracy of EPDs
- Better characterization of genetics for difficult-to-measure performance traits (such as carcass traits, maternal traits and feed efficiency)
- The ability to make more rapid progress for traits that are important to you, due to:
 - more accurate selection
 - easier identification of genetic outliers
 - the ability to propagate young animals with confidence earlier in their lives

In fact, GE-EPDs on unproven animals have the same amount of accuracy as if they had recorded 10-36 calves, depending on the trait. That's valuable insight, offered regularly through the breed's weekly national cattle evaluation.

Trait	Progeny Equivalent	Trait	Progeny Equivalent
Calving Ease Direct	26	Heifer Pregnancy	17
Birth Weight	23	Calving Ease Maternal	20
Weaning Weight	27	Milk	36
Yearling Weight	23	Mature Weight	15
Dry Matter Intake	12	Mature Height	9
Scrotal Circumference	15	Carcass Weight	15
Docility	12	Yearling Height	17
Claw Set	10	Carcass Marbling	11
Foot Angle	10	Carcass Ribeye	17
		Carcass Fat	14

How do you know if EPDs are genomic-enhanced?

Ask your breeder, refer to the registration paper, or look for the AGI GE-EPD logo, Angus GS™ powered by partner Neogen GeneSeek or the HD50k by partner Zoetis. These images indicate animals for which low-density or high-density genomic testing has been conducted and incorporated by AGI into GE-EPDs



www.angus.org

BA

friday
october 25

THE BELVIN ANGUS & GUESTS
F E M A L E S A L E



caldwell

SHAW CALDWELL 11432 [CAA# 2307226]

Shaw Caldwell 11432 is one of the most exciting sires we have ever introduced into our program. Selected as the \$59,000 High Seller from Shaw Cattle Co at Caldwell, ID., one of the largest purebred operations in the Western US, Caldwell is a phenotypic knockout, with impressive length and rib shape, large scrotal, great feet and an athletic presence to him. Sired by the extremely popular Sitz Resilient 10208, Caldwell is a calving ease bull who offers an awesome birth to weaning spread and has an EPD profile with eleven different traits in the top 10% of the breed in Canada. The dam of Caldwell, Tehama Mary Blackbird D094, is a full sister to the prevalent Tehama Tahoe B767, another highly proven, popular sire in the Angus breed. The combination of phenotype, pedigree and EPD's make Caldwell an extremely unique breeding piece. With over 70 calves born thus far in our winter herd, and many coming in the summer group as well, the Caldwell offspring will play a major role in our sale going forward.

BW	WW	YW	MK	GED	GEM	CW	MB	REA	FT
-1.1	78	133	43	11	7	43	0.75	0.65	0.019

BA

upcoming sires



kokanee

BELVIN KOKANEE 2022 [CAA# 2266625]

Belvin Kokanee 2022 is a bull we retained for use in our own herd. If the most important part of a bull is his mother, then 2022 rises to the top for that alone. His dam, Georgina 14'14 (pictured at right), is a cornerstone in our herd and one of the standout producers we've ever had. 14'14 is a female who has the ability to produce heavy, high performing sons, yet her daughters are built just like her, moderate framed with great udders and as angular and feminine as you can find. The high seller in our 2023 Female Sale was a full sister to Kokanee. With SAV Blackcap May 4136 and Elbanna of Conanga 1209 behind Atlantis, the maternal side of 2022's pedigree is huge. Phenotypically, 2022 is a free moving, big nuted, big boned, heavy muscled, massive made bull. He's a bull that has had the presence of a herd bull since he was a baby. We used him heavily on cows last spring, and the early look of his calf crop is very exciting.



BW	WW	YW	MK	CED	CEM	CW	MB	REA	FT
3.7	73	127	33	-3	3.0	54	0.64	0.59	0.055

THE FUTURE OF OUR PROGRAM AT BELVIN ANGUS





BELVIN KEREMEOS 2062 *Square B Atlantis 8060 son out of KFC 839L Miss Legacy 0190 (OCC Legacy 039L) to Willow Valley Ranch, Rimbey, AB for \$26,500*



BELVIN JUSTIFICATION 1402 *Baldrige Vegas Go82 son out of Belvin Rosebud 147'19 (HA Outside 5307) to Lake Road Angus, Worsley, AB for \$25,000*



BELVIN KICKSTART 2056 *Baldrige Mercenary D002 son out of Belvin Queen 35'20 (Sitz Major 707F) to Lango Land and Cattle, Viking, AB for \$20,000*



BELVIN VEGAS 2060 *Baldrige Vegas Go82 son out of Belvin Erroline 17'19 (Coleman Charlo 0256) to East & West Ranching Co. Ltd., Manyberries, AB for \$16,000*



BELVIN KNOXVILLE 2019 *Baldrige Mercenary D002 son out of Belvin LA Lady Blossom 53'20 (Sitz Major 707F) to East & West Ranching Co. Ltd., Manyberries, AB for \$15,500*



BELVIN KING RANCH 2009 *Brooking Roll Call 9045 son out of Belvin Lady Blossom 9'19 (Baldrige Mercenary D002) to Parkview Farms, Falun, AB for \$15,000*



BELVIN KAHLUA 2198 *Belvin Halliday 0207 son out of Belvin Torcaza 242'17 (Duralta 56S Yellowstone 136X) to Klautd Ranches, Seven Persons, AB for \$14,000*



BELVIN KAHUNA 2067 *Sitz Major 707F son out of Belvin Georgina 123'15 (Belvin Vector 202'12) to Rust Mountain View Ranch, Mercer, ND for \$13,000*



BELVIN KING CITY 2187 *Baldrige Discovery D121 son out of Belvin Lady Blossom 35'14 (Belvin Tres Marias Patron 205) to JEM Farms, Vernon, PEI for \$13,000*



BELVIN KIRKLAND 2070 *Sitz Major 707F son out of Belvin Lady Blossom 157'20 (Poss Maverick) to Colven Cattle Co., Bethune, SK for \$13,000*



BELVIN MAVERICK 2199 *Poss Maverick son out of Poplar Meadows Lady Heather 3W (SAV Final Answer 0035) to Luis Pacheco, Chihuahua, Mexico for \$13,000*



BELVIN KOBE 2024 *Belvin May City 0136 son out of Belvin Barbara 31'20 (Montana Octane 6121) to East & West Ranching Co. Ltd., Manyberries, AB for \$13,000*

VOLUME BUYERS *East & West Ranching Co. Ltd (11 bulls)
Flying E Rancho (10 bulls)*

BA high sellers in 2023





BA thank you

for your SUPPORT OF
OUR PROGRAM







Return undelivered mail to:
Belvin Angus, P.O. Box 6134,
Innisfail, Alberta T4G 1S8
www.belvinangus.com