

A close-up, high-contrast photograph of a dark horse's face. The horse is wearing a yellow halter with a circular piece around its nose. The lighting is dramatic, highlighting the texture of the horse's coat and the details of its eye and nostril.

H F

HAMILTON FARMS

*27th Annual*

BULL SALE  
& Select Female

Wednesday, March 30, 2022, Cochrane, AB

# Welcome everyone to our 27th Annual Bull & Select Female Sale!!

We are hosting our 27th annual bull sale on March 30th, 2022 at the ranch and we very much look forward to having you join us for some warm hospitality and cattle viewing. We have a large selection of half-brothers available from our main sire battery which will vividly display the consistency in those sire groups. We are very proud of the vast quality throughout the bull and heifer pens, but your appraisal will obviously be the true testament of their value.

Our search for the next herd bull to add strength to our program is vast and un-ending. Again this year, we have added some new blood-lines which have complimented our mission to supply you with no nonsense genetics which calve easy, perform well, and add value to your bottom line.

The bulls are raised on a minimum 80% roughage diet during cold snaps and under normal weather conditions they are on an 85% roughage diet. This diet is designed for approximately 3 pounds/day gain so that the bulls will be in ideal condition and ready for your inspection. A great indicator of how responsibly the cattle have been managed is to view their hair coat! Excess energy in a diet will deter hair growth and sheen. The bulls in this offering have extra hair coat and shine to them and you can be assured that longevity will be preserved.

The heifers on offer have been developed on a 100% roughage diet and we are super happy with the quality and condition they are in. This is quite easily the best set of heifers we have ever offered through this sale.

We have been so fortunate over the years to have great supporters of our program. To everyone of you, we would like to say thank-you. Whether you bought cattle, or bid on cattle, or came to observe and see our program...thanks a lot! We appreciate you!



Joel & Taylor

Wacey & Carlye  
Oshie & Romee

Wyatt & Stacey

Rob & Gail



Dave Moon - Operations Manager/Foreman  
Family, Laura, Maysa, Dakota, Dyson



Brenda Silbernagel Office Manager, and  
Gail's right hand!

It takes great people to make an operation run smoothly and we have been blessed with quality people around us. Thanks to Brenda Silbernagel for keeping our office ticking along and spending countless hours talking to customers and handling orders for our beef program. We have added additional part time help in our office and we are very fortunate to have Dawn Turner working with us. Dave Moon is our operations Manager/Foreman and we are so fortunate to have Dave and Laura and family with us for the past six and a half years. Our son Joel and his wife Taylor are eagerly taking on more responsibility all the time and are very integral to the future of Hamilton Farms. Cole Giles has been involved with us for many years, taking care of sale and show cattle preparation and he is one of the best in that profession. Other seasonal help include Bruce Luyendyk, Richard Gadoury, and Jordan Buba. Thank you team for all of exceptional efforts... you are appreciated very much!

Everyone at Hamilton Farms is eager to assist you with selecting the bulls or heifers that you are wanting to acquire. Our live auction will take place on March 30th and we will provide you with a safe and comfortable atmosphere while attending our sale. Although the cattle will be available for viewing anytime from now until sale time, please plan to join us on Tuesday, March 29th for our open house and cattle viewing. If you can't make the sale in person, DLMS and DV Auctions will be available to handle your on-line bidding needs.

Stay Safe, Happy Ranching, and we look forward to seeing you!

*Rob, Gail & Joel*



# Hamilton

## FARMS

*Sale Day Phones...*

403.932.5980 house/barn

403.932.5960 barn

403.540.3186 Rob cell

403.540.8291 Gail cell

403.808.6341 Joel cell

587.586.5445 Dave Moon

HamiltonFarmsInc



[www.hamiltonfarms.ca](http://www.hamiltonfarms.ca)



Hamilton Farms Inc.

### *Sale Staff...*

Steve Dorrان - Auctioneer 760.972.7736  
Rod McLeod - Ring Service 403.540.7986  
Bryon Wolters - Ring Service 780.581.8396

### *Sale Consultants...*

#### **BOHRSON MARKETING SERVICES**

Scott Bohrson 403.370.3010  
Taylor Richards 306.821.4169  
Jaxon Payne 306.830.0456  
Jay Sibbald 403.899.2625

#### **OBI LIVESTOCK LTD**

Mark Holowaychuck 403.896-4990  
Roger Peters 403.828.9815  
Kurt Pedersen 780.209.9999

#### **CASTLEROCK MARKETING**

Shane Castle 306.741.7485  
Mark Forsyth 306.784.7844

#### **SEBASTIEN STEWART CONSULTING**

Sebastien Stewart 250.423.1357

#### **DORRAN MARKETING INC**

Ryan Dorrان 403.507.6483

### *Livestock Photography...*

Jordan Buba

### *Online Bidding and Viewing...*

The entire sale will be available for viewing and bidding via live stream internet access. Internet viewing and bidding will be made available through [DLMS.CA](http://DLMS.CA) as well as [DVAUCTION.COM](http://DVAUCTION.COM)

Internet Bidding Available

**DLMS**

[www.dlms.ca](http://www.dlms.ca)

For more information call DLMS:  
Mark Shologan 780.699.5082 or  
DLMS Purebred Team 780.991.3025

**DVAuction**

Broadcasting Real-Time Auctions

DVAuction, [www.dvauction.com](http://www.dvauction.com)  
Sarah Hasson 306-681-5340  
Customer Service 402-316-5460

### *To our United States Customers...*

Please take note that the strong \$USD gives you tremendous buying power. For example; Spending \$10,000.00 CDN will only cost you approximately \$7700.00 USD. Funds shall be accepted at the Rate of Exchange on sale day.

Hamilton Farms will do all health testing and export papers required for shipment. We will assist in arrangements for the cattle to be shipped to central points in the US. Cost is the responsibility of the buyer.



### *Offering...*

**126**  
YEARLING BLACK  
ANGUS BULLS

**12**  
2 YEAR OLD BLACK  
ANGUS BULLS

**28**  
YEARLING BLACK  
ANGUS OPEN HEIFERS

**50**  
SELECT BLACK ANGUS OPEN  
COMMERCIAL HEIFERS

### *Expected Progeny Differences...*

#### AVERAGE EPDS FOR 2021 BORN BLACK ANGUS CALVES

EPD	BW	WW	YW	CED	CEM	Milk	CW	MARB	REA	FAT
	2.0	51	89	3.6	6.8	22	38	0.42	0.49	0.015



## *Schedule of Events...*

Tuesday, March 29, 2022

Open House with complimentary lunch and refreshments Cattle available for viewing

Wednesday March 30, 2022

12:00 noon - Complimentary lunch

1:30 pm MST - **HAMILTON FARMS 27TH ANNUAL BULL SALE**

## *Accommodations...*

Holiday Inn Express Hotel & Suites - Airdrie 1-866-912-1952

Airdrie Ramada Inn & Suites - Airdrie 403-945-1288

Comfort Inn & Suites - Airdrie 403-948-3411

Best Western Harvest Country Inn - Cochrane 403-932-1410

Days Inn & Suites - Cochrane 403-932-5588

Hampton Inn & Suites - near Calgary Airport 403-250-4667

## *Special Representatives...*

Canadian Angus Association - Myles Immerkar, CEO

## *Insurance...*

Insurance will be made available through

Larry Toner-Stockmans Insurance 306-932-4866 or 306-834-7652 • larrytoner@explornet.com

Jill Wildman-Canadian Farm Insurance Corp 780-305-1146

## *View the catalog and Videos online at...*

This will be a video sale with no animals entering the ring. All the sale cattle will be available for viewing prior to the sale at the sale location.

Up to date videos and sale information will be available at:

[www.hamiltonfarms.ca](http://www.hamiltonfarms.ca)      [www.bohrson.com](http://www.bohrson.com)

[www.dlms.ca](http://www.dlms.ca)      [www.castlerockmarketing.com](http://www.castlerockmarketing.com)

[www.cattlemangement.ca](http://www.cattlemangement.ca)      [www.dvauction.com](http://www.dvauction.com)

## *Sale Location...*

FROM CALGARY: 9.6 km ( 6 miles) west on Hwy. 1A, 18 km (11.25 miles) north on Hwy 766, 1.6 km ( 1 mile) west.

FROM AIRDRIE: 22.4 km (14 miles) west on Bill Hill Springs Rd., 7.4 km (4.5 miles) North on Hwy 766, 1.6 km (1 mile) west.

Navigation Address - 274132 Range Road 33, Rockyview County T4C 2Y2

## *Sight Unseen Purchase Plan...*

We would like you to attend our sale, but if you cannot, you can have Rob or Gail personally handle your purchase. Call them with your specifications and discuss the offering, preferably a week before the sale. Rob and Gail will gladly assist you with your selections and represent you on sale day. We guarantee full satisfaction upon delivery or you don't own him. Rob's cell 403-540-3186 Gail's cell 403-540-8291

## *Delivery...*

Hamilton Farms will deliver bulls to central points in Western Canada and will assist with trucking to Eastern Canada and USA. Bring your own trailer and Hamilton Farms will deduct \$100/bull off the purchase price for bulls taken home on sale day.

## *Right to Semen...*

Hamilton Farms reserves the right to collect semen on any bull sold through this sale. The semen collection will be at Hamilton Farms expense and the buyers convenience. Any semen collected will be for Hamilton Farms in herd use only.

## *Air Travel...*

All Major airlines serve Calgary International Airport.

Let us know if we can be of assistance in scheduling your flight.

## *Sale Catalog...*

Production & Design - Prime Cut Publishing - Kim Matthews

Printed by Western Litho Printers, Regina, SK



# COW/CALF HEALTH & MANAGEMENT

## *Overview for Hamilton Farms*



Hamilton Farms have their entire cow herd on an integrated and comprehensive health and production management program. The program is based on the detailed collection of data on each individual animal at all key health and production points. This information is kept in a secure web-enabled database called Herdtrax® and it is continually monitored and audited by the managing veterinarians at Cow/Calf Health and Management Solutions (CCHMS).

**ALL BULLS WILL BE SEMEN TESTED BY DR. TROY DRAKE, DR. WAYLON WISE & Dr. Oliver Schunicht AND READY FOR DELIVERY.**



Dr. Troy Drake, D.V.M.



Dr. Waylon Wise, D.V.M.

## The are 5 key components to the health and management program:

- Nutrition
- Animal Care and Welfare
- Disease Prevention
- Breeding Soundness
- Tracking Sale Bull Progeny Performance

### Bull and Heifer Nutrition

All pre-weaned calves are raised on mamas milk and lush green grass. No supplemental creep is needed or provided. After weaning they are introduced to a fibrous total mixed ration comprised of chopped hay, silage, barley and an all-natural protein supplement. This diet is more than adequate for maintaining growth and performance and superior for rumen, hoof and reproductive health.

### Animal Care and Welfare

All the animals (not just the cattle) at Hamilton Farms are managed and handled with the utmost of care. The cattle are comingled in small groups in large spacious paddocks that have 360 degree wind protection and a large amount of slope so that there is always a dry area to stand or lay down. Straw bedding is abundant and always fresh. Cattle are always handled with ease, but when necessary (in the event of an injury or lameness) an analgesic medication (Meloxican) is administered to help lessen the pain. Rob and Gail, as most producers, take great pride in insuring that all of their animals are managed, transported and cared for in the most humane manner possible.

### Disease Prevention

Hamilton Farms follow a detailed vaccination program to help ensure that the cattle stay healthy and continue to thrive on the farm and carry this forward onto their new homes. Below is a list of the antigens vaccinated against and the associated product names used.

Calves are vaccinated within the first 10 days of life:

- IBR/PI3/BRSV (MLV) – Inforce 3® (intransal)

Calves are vaccinated in the spring prior to pasture turnout with the following:

- IBR/PI3/BRSV (MLV) – Inforce 3® (intransal)
- BVD (MLV) and Mannaemia hemolytica – One Shot® BVD
- 7 way Clostridial and Hlistophilus Somnus – Ultrabac® 7/Somnubac®

Calves are vaccinated at weaning with the following:

- IBR/PI3/BRSV/BVD (MLV) and Mannaemia – Bovi-Shield® GOLD One Shot®
- 7 way Clostridial and Hlistophilus Somnus – Ultrabac® 7/Somnubac®
- Parasite Control – Safe-Guard® initially, followed by Ivermectin in fall.

Cows, replacement heifers, bulls are annually vaccinated pre-breeding:

- IBR/PI3/BRSV/BVD – Bovi-Shield® GOLD FP®5 (Fetal Protection)

Bulls prior to the sale have been vaccinated and treated with the following:

- Fusobacterium Necrophorum – Fusoguard™ (footrot and liver abscess vaccine)
- Two doses given twice 60 days apart
- Lice Control – Permethrin

Bulls prior to the delivery will be boosted, and ready for turnout:

- IBR/PI3/BRSV/BVD – Bovi-Shield® GOLD FP®5

### Breeding Soundness Examination

Every bull for sale will have been evaluated for the following criteria:

- Physical Examination
  - Soundness of structure and movement
  - Palpate testis, epididymis and internal sex glands
- Scrotal Circumference
  - Minimum requirements must be met or no further evaluation is performed
- Examination of the penis
  - Verify each bull can protrude and there are no warts or defects on the penis.
- Sperm motility and morphology
  - Verify sufficient gross and individual motility and sperm morphology

The bull must pass all the above criteria to be considered a satisfactory breeder. If the bull passes all of the above criteria but falls just below the minimum threshold for sperm morphology (70%), he is considered to be a “decision deferred” breeder. Approximately 40% of all bulls will fail to produce an adequate semen sample at 11 mo. of age, 30% at 12 mo., 15% at 14 mo., 5% at 16 mo. This classification of bulls means that they are either prepubertal or stressed, but are showing sufficient signs of improvement and will likely be satisfactory soon when the days get longer and the grass is greener. Any Decision Deferred bulls offered for sale will be announced at sale time and none of these bulls will be delivered until they achieve satisfactory semen status.

### Tracking Sale Bull Progeny Performance

Over the past several years many of the bulls sold have gone to producers that are also enrolled on the Herdtrax cattle management network. This allows for the seamless transfer of the bulls record and history to the buyers Herdtrax account and also subsequently allows for the continual flow and ongoing access to each bulls progeny performance. Below is a sample of the data that is acquired passively and is fully accessible by Hamilton Farms. This is an extremely valuable resource that assists the commercial producer with their ongoing decisions regarding what type of bulls work best in their program, but it also provides the Hamiltons with feedback on how their bulls are working for each commercial producer in their respective environments. Take special note of the calves' birth weights, weaning and yearling weight indexes and the quality grades. Who says you cannot have it all! FYI; this data is all from one sire.

CCHMS is proud to work with Hamilton Farms and if required will provide documentation and verification of all animal health processes and treatments. If there are any questions with respect to the health and production management program at Hamilton Farms, please contact myself or Dr. Troy Drake directly.

Hamilton Farms is pleased to support the Canadian Angus Foundation with a donation of 15% of the average from their 27th Annual Bull Sale

## We are proud to support the Canadian Angus Foundation 15 for 50 Program

With YOUR help we will continue to further the Foundation's mission and the breed.

**15%**  
of a lot  
means  
a lot...

Since 2019 more than \$170,000 has been INVESTED in member education, awards, bursaries and youth scholarships.

\$180,000 invested in ANGUS research over the last three years leveraged an additional \$360,000 in grant funding.

\$60,000+ has been invested in history and archives, including the 2019 Canadian Angus history book.

If you are interested in giving back or learning more about this new initiative, please contact Belinda Wagner, Canadian Angus Foundation Executive Director at 306-537-1518 or email [bwagner@cdnangus.ca](mailto:bwagner@cdnangus.ca). You can also visit the Canadian Angus Foundation website at [www.cdnangus.ca/foundation/](http://www.cdnangus.ca/foundation/).



The Canadian Angus Foundation functions to preserve and expand the Angus breed for future generations through education, youth development, scientific and market research, and historical preservation and restoration. The Canadian Angus Foundation was incorporated in 1993 and is the charitable arm of the Canadian Angus Association. Donations are tax deductible.

**HF ALCATRAZ 60F**



CAA Reg # 2043806    AAA Reg # 19283566

EPD	BW	WW	YW	CED	CEM	Milk	CW	MARB	REA	FAT
	0.8	53	98	7.0	4.0	39	45	0.61	0.68	0.040

Alcatraz sold through our 2019 sale to Bar-E-L Angus and Cowtrax Cattle Co. for a Canadian record selling price of \$200,000.00 for one half interest. Alcatraz set a new standard for the definition of what a fault free bovine should look like. His structure is pretty much flawless and he is so impressive in every other way. If docility is important to you, he has that. If added muscle expression is your desire, he provides that. He proved himself as a calving ease sire after the data on his first calf crop was recorded. When we collected semen on Alcatraz at 13 months of age, he never missed a beat and produced semen consistently during his time at Alta Genetics. Alcatraz daughters are consistently moderate in frame with some added muscle shape and spring of rib. We are very proud to have raised such a bull and his impact on our program will have long lasting positive effects.

**21 Sons Sell**  
**4 Daughters Sell**

**SCHIEFELBEIN SHOWMAN 338**



CAA Reg #2133416    AAA Reg # 19260249

EPD	BW	WW	YW	CED	CEM	Milk	CW	MARB	REA	FAT
	0.2	87	160	8.0	10.0	26	60	0.22	1.03	-0.033

We purchased Showman with Six Mile Angus in the 2019 Schiefelbein Sale where he was the high selling bull at \$125,000.00 USD. We bought Showman to add a new pedigree to our program that would support our efforts to provide easy doing, easy calving, high performance cattle. Showman has exceeded all of our expectations after the first progeny have been weaned. Showman has unbelievable spread from birth to weaning, and he does all of this while still transmitting tremendous muscle shape, volume, and eye appeal. The Showman sons are super stout with a ton of angus character and the heifers exhibit an abundance of volume and capacity, while maintaining superior femininity. Showman progeny have been in high demand and this will be our biggest sire group on offer.

**51 Sons Sell**  
**14 Daughters Sell**



**SITZ PROFOUND 680G**



CAA Reg # 2178503 AAA Reg #19392993

	BW	WW	YW	CED	CEM	Milk	CW	MARB	REA	FAT
EPD	0.7	67	133	3.0	6.0	30	53	0.65	0.47	0.027

Profound was the high selling bull in Sitz's 2020 spring bull sale, selling to Hollow Top Ranch, Montana, for \$70,000.00. We acquired semen exclusivity on Profound to add to our herd bull line up and provide some fresh genetics which are rich in maternal values. Profound is a high performing, calving ease sire with balanced EPD's, tremendous individual phenotype, and flawless structure. We anticipate his daughters will have tremendous value as replacement females as they are developing into beautiful, deep bodied, wide based young heifers.

**11 Sons Sell  
2 Daughters Sell**

**HF ROPER 27F**



CAA Reg # 2043810 AAA Reg #19283563

	BW	WW	YW	CED	CEM	Milk	CW	MARB	REA	FAT
EPD	-0.9	71	132	17.0	7.0	18	52	0.31	0.09	-0.002

Roper is one of our all-time favorite Cowboy Up sons who has curve bending performance coupled with superior calving ease. Roper was purchased by Semex Alliance for \$42,000.00. He is extremely deep bodied with added muscle expression and structural correctness. His dam, HF Rosebud 246Z is a highly productive, beautiful uddered female who earned her way to the donor pen by raising some front end bulls which sold through past sales. A son, HF Thrive 128D, sold for \$35,000.00 to Alta Genetics, another son HF Walk Away Joe 139F sold for \$19,000.00 to Bar-E-L Angus, another son sold for \$17,000.00 to Tafika Angus, plus numerous other feature lots.

**7 Sons Sell**

**HF STORM CENTER 26D**



CAA Reg # 1908362 AAA Reg #18610761

	BW	WW	YW	CED	CEM	Milk	CW	MARB	REA	FAT
EPD	0.4	50	86	10.0	12.0	22	20	0.34	0.49	0.019

Storm Center originally sold through our 2017 bull sale, going to Sunrise Simmentals, Spyhill, Sk. and Darren Clifford, Provost, Ab. for \$35,000.00. We continued using Storm Center through AI for a couple of years and as his daughters developed, we could see that they were the special type... moderate in size, structurally sound, with beautiful udders. We acquired a walking interest back on Storm Center and have appreciated his service back in our pastures. The Blackcap cow family has a long history here and the accomplishments are many. Maternal brothers to Storm Center have sold to Pahl Livestock, \$37,500.00, Pleasant Valley Farm, \$42,000.00, Hextall Livestock, \$32,500.00, East & West Ranching, \$19,000.00 plus many more too numerous to mention all.

**9 Sons Sell  
2 Daughters Sell**



CAA Reg #2108483 AAA Reg #18162044

### BARE-L EXPANSION 12G

Expansion was purchased from the highly respected Bar-E-L program to tap into two highly regarded cow families, the Magnolia's and Bride's, which are front and center in his pedigree. Expansion himself, is square made, super sound, with an abundance of angus character and tremendous good looks.

3 Sons Sell

EPD	BW	WW	YW	CED	CEM	Milk	CW	MARB	REA	FAT
	3.4	54	83	1.0	7.0	21	-	-	-	-



CAA Reg # 2019663 AAA Reg #18962396

### POSS MAVERICK

Maverick was purchased by Semex and Belvin Angus out of Poss's where he was the high selling bull. Maverick is one of the most talked about bulls in the industry for being able to inject high carcass values in one cross and his semen is in very high demand. His progeny have been very well accepted and appreciated for their depth of body, style, and performance. Maverick's dam is a highly productive, nice uddered female who produced Maverick as a 2 year old.

3 Sons Sell

EPD	BW	WW	YW	CED	CEM	Milk	CW	MARB	REA	FAT
	1.2	74	126	4.0	5.0	36	65	1.53	0.76	0.036



CAA Reg # 2033620 AAA Reg #18671858

### BARTELS ELEMENT 1028 651

We purchased Element to provide an outcross pedigree for our program while still maintaining our focus of providing moderate birth, functional cattle, that will still add pounds at weaning. Element has fulfilled these requirements and his progeny are a valuable asset for us. Element is a long bodied bull, with excellent feet and legs, and a EPD profile which is hard to ignore. Element daughters exhibit udders which are level in design with optimum teat size.

7 Sons Sell

EPD	BW	WW	YW	CED	CEM	Milk	CW	MARB	REA	FAT
	0.5	70	119	9.0	15.0	28	49	0.43	0.59	0.019



CAA Reg # 2093065 AAA Reg #19671021

### HF INTERVENTION 65G

Intervention sold through our 2020 sale to Larry Dew, Windthorst, Sk. For \$23,000.00. Sired by Syndicate, and out of a Tiger daughter, he packs a stacked pedigree with HF royalty. Tibbie, Blackcap, Echo, Tiger, Sydicate, G-Man...It's all there. His dam was highly regarded and one of our favorite 2 year old's prior to her un-timely death do to getting cast on a bedding pack.

5 Sons Sell

EPD	BW	WW	YW	CED	CEM	Milk	CW	MARB	REA	FAT
	2.5	49	99	2.0	5.0	34	60	0.45	0.44	0.01



Maternal Grand Sire, HF El Tigre 28U

**5J**

Bull • WYAT 5J • January 05 2021 • #2207882

**HF BIG SHOW 5J**

SCHIEFELBEIN ATTRACTIVE 4565  
**SCHIEFELBEIN SHOWMAN 338**  
 FROSTY ELBA 3745

HF EL TIGRE 28U

**HF ROSE 62Y**

HF ROSE 212R

JMB TRACTION 292  
 FROSTY ANSWER 3979  
 S A V RENOWN 3439  
 FROSTY UPWARD 1100  
 HF KODIAK 5R  
 HF ECHO 84R  
 TC FREEDOM 104  
 HF ROSE 20J

Act BW	87
Adj WW	811
Adj YW	1416
ADG	3.78

BW	2.6
WW	70
YW	125
CED	2.0
CEM	5.0
Milk	29
CW	53
MARB	0.10
REA	0.60
FAT	-0.013

Big Show has big presence! He is all bull and you'll like him from any angle. His mother is a CAA Elite /Premier Dam and mating her to Showman proved to be a knock-out punch. A real power bull for those who are searching.

**7J**

Bull • HAMI 7J • January 05 2021 • #2233770

**HF STAR STRUCK 7J**

NORTH CAMP SILVER STAR 5103  
**HF SILVER STAR 213G**  
 HF ROSEBUD 259C

HF GOLD BUCKLE 92E  
**HF ANNIE 79G**  
 HF ANNIE 212Y

R B ACTIVE DUTY 0010X  
 MALSONS JILT 13Z  
 LLB REFLECTION 607A  
 HF ROSEBUD 217Z  
 HA COWBOY UP 5405  
 HF BETTY 51B  
 HF SWAGGER 75W  
 HF ANNIE 82W

Act BW	65
Adj WW	724
Adj YW	1202
ADG	2.99



EPD	BW	WW	YW	CED	CEM	Milk	CW	MARB	REA	FAT
	-0.6	53	94	13.0	12.0	23	42	0.19	0.54	0.017





**15J** Bull • HAMI 15J • January 07 2021 • #2207890

**HF INTIMIDATOR 15J**

SITZ STELLAR 726D	MOHNEN SUBSTANTIAL 272	Act BW 70
<b>SITZ PROFOUND 680G</b>	SITZ PRIDE 200B	Adj WW 761
SITZ EPPONIA 223C	SITZ UPWARD 9873	Adj YW 1272
	SITZ EPPONIA 31Z	ADG 3.19
HF TIGER 5T	HF KODIAK 5R	
<b>HF TIBBIE 282A</b>	HF ECHO 84R	
HF TIBBIE 103T	HF DONE RIGHT 125R	
	HF TIBBIE 62R	



Full sister to dam, HF Tibbie 145A



Maternal Sister to 15J, HF Tibbie 3H, sold to Pieschel Farms for \$22,000

Here is a bull that is ready to work! A calving ease bull that will pack on the pounds, he's stout and square made, and he can get out and move! Intimidator has tremendous feet and has the pedigree to prove it. His mother, HF Tibbie 282A, is as nice as you can make them. She is moderate framed, has tremendous depth and volume, with a beautiful level and tight udder. She has royalty in her pedigree as she is a full sister to HF Rebel 53Y, who sold to Stevenson Angus, and TC Ranch for \$95,000. She has also raised HF Risky Business 135G, who sold to 66 Ranch for \$21,000, and HF Greenback 116E, who sold to Granum Colony for \$11,000.

BW	-1.9
WW	51
YW	100
CED	12.0
CEM	10.0
Milk	28
CW	41
MARB	0.58
REA	0.24
FAT	0.041



**16J** Bull • HAMI 16J • January 07 2021 • #2207891

**HF FULL HOUSE 16J**

SCHIEFELBEIN ATTRACTIVE 4565	JMB TRACTION 292	Act BW 86
<b>SCHIEFELBEIN SHOWMAN 338</b>	FROSTY ANSWER 3979	Adj WW 735
FROSTY ELBA 3745	S A V RENOWN 3439	Adj YW 1329
	FROSTY UPWARD 1100	ADG 3.71
HF EL TIGRE 28U	HF KODIAK 5R	
<b>HF MAYFLOWER 46X</b>	HF ECHO 84R	
HF MAYFLOWER 78P	HF JUSTICE 52L	
	SCHELL'S MAYFLOWER 4F	



HF Mayflower 46X, Dam



HF Mayflower 191Z, Maternal sister to dam

BW	2.7
WW	59
YW	113
CED	2.0
CEM	5.0
Milk	25
CW	50
MARB	0.30
REA	0.67
FAT	-0.003

Full House is a big quartered, wide topped bull that you will have a hard time finding faults on. He is made right for the times and comes to you thanks to his 12 year old CAA Elite/Premier Dam.



**17J**

Bull • HAMI 17J • January 07 2021 • #2207892

**HF RIP 17J**

HA COWBOY UP 5405  
**HF ROPER 27F**  
 HF ROSEBUD 246Z

HF SYNDICATE 213Z

**HF ECHO 181C**  
 HF ECHO 92Z

HA OUTSIDE 3008  
 HA BLACKCAP LADY 1602  
 HF TIGER 5T  
 HF ROSEBUD 94P  
 CONNEALY CONSENSUS 7229  
 HF MISS BLACKCAP 27R  
 HF KODIAK 5R  
 HF ECHO 274X

Act BW	86
Adj WW	831
Adj YW	1420
ADG	3.68

BW	2.4
WW	64
YW	120
CED	8.0
CEM	5.0
Milk	25
CW	45
MARB	0.22
REA	0.27
FAT	-0.009



Maternal Grand Dam, HF Echo 92Z



Maternal Grand Sire, HF Syndicate 213Z

This is a power bull. This won't be the only bull named Rip you'll find this spring, thanks to the popularity of Yellowstone, but I can assure you he is still one of a kind! Rip has been a standout since he was on mother's milk. When pairing his unmatched masculinity, length of body, and pure power with his sexy look and swagger, his proudness will catch your eye no doubt. From the moment he stepped off the trailer in Regina at the Western Canadian Agribition he was turning heads as one of the favorite bulls in the string because of his completeness. He just makes everything look easy. He was an early maturing bull with optimum scrotal development at an early age. We truly think this bull is something special. His grand dam, HF Echo 92Z, is a 10yr old, big tanky cow that has done her job year after year. Some of her most recent accomplishments was raising, HF Hostage 170G, selling for \$12,500 to Dwajo Angus. Her heifer calf, HF Echo 314F, sold to Cow Trax Cattle Co. as a pick of our heifer calves, for \$15,000.

**UPDATED INFORMATION!**

Go to [www.hamiltonfarms.ca](http://www.hamiltonfarms.ca)

for current information on

- Carcass Data Results
- Current Weights
- Scrotal Measurements
- Videos of sale lots can also be viewed on our website



You must learn from the mistakes of others. You can't possibly live long enough to make them all yourself.



**22J**

Bull • HAMI 22J • January 09 2021 • #2207897

**HF AFTERSHOCK 22J**

MAY-WAY BREAKOUT 1310  
**HF ALCATRAZ 60F**  
 HF MAYFLOWER 191Z

HF TIGER 5T  
**HF MISS BLACKCAP 257E**  
 HF MISS BLACKCAP 27R

AVF BREAKOUT 5409  
 MAY-WAY LADY BANDO 086  
 HF TIGER 5T  
 HF MAYFLOWER 78P  
 HF KODIAK 5R  
 HF ECHO 84R  
 TC FREEDOM 104  
 HF MISS BLACKCAP 50N

Act BW	82
Adj WW	821
Adj YW	1488
ADG	4.17



BW	0.9
WW	53
YW	101
CED	7.0
CEM	6.0
Milk	36
CW	40
MARB	0.46
REA	0.40
FAT	0.029



Maternal Grand Dam, HF Miss Blackcap 27R



Maternal brother to 22J, HF Showman 77H sold to East & West Ranching for \$12,500

Aftershock is sure to be a fan favorite in the pen this year! He has herd bull written all over him with favorable calving ease and high performance that'll shake the very ground you stand on. He was the heaviest yearling weight bull with an actual weight of 1465lbs on January 10th and that is no surprise when you see his length of body and tabletop back. He also has an average daily gain of 4.17lbs/day on a ration designed for 3lbs/day. Pair this performance with the great qualities that Alcatraz carries through with foot and leg structure, docility, and calving ease and that's a recipe for success! His mother, HF Miss Blackcap 257E, is a nice doing moderate cow with a level tight udder and good feet. She is also a full sister to HF Miss Blackcap 296Y, who is one of the most productive females we have ever had, raising 16 calves that averaged over \$18,000. We think the sky is the limit for Aftershock's mother, based on her stacked pedigree and already impressive job done by this young cow.



**27J**

Bull • WACE 27J • January 09 2021 • #2227421

**HF INTERVENTION 27J**

HF SYNDICATE 213Z  
**HF INTERVENTION 65G**  
 HF TIBBIE 239E

HF THRIVE 128D  
**HF MISTRESS 10G**  
 HF MISTRESS 42U


CONNEALY CONSENSUS 7229  
 HF MISS BLACKCAP 27R  
 HF G-MAN 29B  
 HF TIBBIE 192X  
 BSF HOT LOTTO 1401  
 HF ROSEBUD 246Z  
 S A V 004 PREDOMINANT 4438  
 HF MISTRESS 6M

Act BW	68
Adj WW	707
Adj YW	1146
ADG	2.74




EPD	BW	WW	YW	CED	CEM	Milk	CW	MARB	REA	FAT
	-1.0	38	75	12.0	11.0	30	34	0.29	0.27	0.019

**HF SMOKE RING 28J**

HA COWBOY UP 5405	HA OUTSIDE 3008	Act BW	74							
<b>HF ROPER 27F</b>	HA BLACKCAP LADY 1602	Adj WW	703							
HF ROSEBUD 246Z	HF TIGER 5T	Adj YW	1286							
	HF ROSEBUD 94P	ADG	3.65							
HF NEGOTIATOR 280C	HF SYNDICATE 213Z									
<b>HF ANNIE K 274G</b>	HF BETTY 164W									
HF ANNIE K 28Z	HF KODIAK 5R									
	2HR ANNIE 11S									
EPD	BW	WW	YW	CED	CEM	Milk	CW	MARB	REA	FAT
	1.0	53	103	12.0	7.0	21	46	0.36	0.22	0.022



**HF SHOWMAN 34J**

SCHIEFELBEIN ATTRACTIVE 4565	JMB TRACTION 292	Act BW	60							
<b>SCHIEFELBEIN SHOWMAN 338</b>	FROSTY ANSWER 3979	Adj WW	742							
FROSTY ELBA 3745	S A V RENOWN 3439	Adj YW	1192							
	FROSTY UPWARD 1100	ADG	2.81							
HF SWAGGER 75W	HF TIGER 5T									
<b>HF ECHO 150Y</b>	HF MISS BLACKCAP 27R									
HF ECHO 317T	S A V 004 PREDOMINANT 4438									
	DURALTA 14C ECHO 32E									
EPD	BW	WW	YW	CED	CEM	Milk	CW	MARB	REA	FAT
	0.1	62	115	7.0	9.0	25	43	0.35	0.62	-0.004



**Herdtrax Sire Alliance Program**

Two years ago, Herdtrax initiated a Sire Alliance program for all the commercial producers enrolled on Herdtrax. The goal was to collect and share progeny data parameters from multiple commercial herds with varied breed types and management environments. HF Alcatraz 60F was the first bull offered and used in the Alliance program. Below is a summary of all the data collected to date and the results speak for themselves. Question: what type of a bull is Alcatraz; a calving ease bull, a marbling enhancer, a muscling bull, or all of the above? The collection of calving data on the commercial Alcatraz sired replacement females started this year.

**DR. TROY DRAKE D.V.M**

Progeny count: 562 (79% out of 1st calf heifers)  
 Heifers kept for replacements: 130  
 Average BW: 79 lbs  
 Average gestation length: 279 days  
 Average WW: 631 lbs  
 Average Carcass Grid Premium: \$5.2/cwt  
 Average Carcass Weight: 845 lbs  
 Quality Grade: 86% AAA or better  
 Average Feed conversion: 5.21:1

*Note: The F:G data was taken from commercial heifers enrolled on Growsafe at Olds College*





**37J** TWIN • Bull • HAMI 37J • January 11 2021 • #2207909

**HF SHOWPIECE 37J**

SCHIEFELBEIN ATTRACTIVE 4565  
**SCHIEFELBEIN SHOWMAN 338**  
 FROSTY ELBA 3745

HF REBEL 53Y  
**HF ANNIE 46C**  
 HF ANNIE 219Y

JMB TRACTION 292  
 FROSTY ANSWER 3979  
 S A V RENOWN 3439  
 FROSTY UPWARD 1100  
 HF TIGER 5T  
 HF TIBBIE 103T  
 HF SWAGGER 75W  
 HF ANNIE 265U

Act BW 70  
 Adj WW 783  
 Adj YW 1344  
 ADG 3.51



BW 0.3  
 WW 67  
 YW 122  
 CED 5.0  
 CEM 6.5  
 Milk 24  
 CW 50  
 MARB 0.26  
 REA 0.73  
 FAT -0.012



Full brother, HF Show Stopper 104H, sold to Pahl Livestock for \$50,000

Showpiece 37J is a full brother to our 2nd high selling bull in 2021 which sold to Pahl Livestock for \$50,000.00. Showpiece was born twin to a heifer which probably got him off to a slow start early in life, but when you see this bull now, he is very impressive. Long bodied, full of muscle shape, and packing that herd bull look! Another maternal brother to Showpiece sold through our 2019 sale to Ted & Barb Harty for \$12,000.00. HF Annie 46C is a model Rebel daughter who sold through our sale in 2016, going to Grand River Angus for \$11,000.00. Take a close look at Showpiece as there will be loads of breeding potential here



Maternal Grand Sire, HF Rebel 53Y



**39J** Bull • HAMI 39J • January 11 2021 • #2207910

**HF SMOKIN' GUN 39J**

HA OUTSIDE 3008  
**HA COWBOY UP 5405**  
 HA BLACKCAP LADY 1602

HF REBEL 53Y  
**HF ROSEBUD 30A**  
 HF ROSEBUD 70H

KG SOLUTION 0018  
 HA EVER LADY 1575  
 SITZ UPWARD 307R  
 HA BLACKCAP LADY 5515  
 HF TIGER 5T  
 HF TIBBIE 103T  
 TC STOCKMAN 365  
 HF MISS ROSEBUD 15C

Act BW 75  
 Adj WW 788  
 Adj YW 1327  
 ADG 3.37



EPD	BW	WW	YW	CED	CEM	Milk	CW	MARB	REA	FAT
	0.7	52	94	7.0	9.0	21	27	0.07	0.25	-0.019





Maternal sister, HF Bella 69H, sold to CJR Cattle Co. for \$10,000



Maternal brother, HF Breakout 46E, sold to UofC/ WA Ranches for \$8,000

## 40J

Bull • HAMI 40J • January 11 2021 • #2207911

### HF RAMBLER 40J

HF TIGER 5T  
**HF ROPER 27F**  
 HF ROSEBUD 246Z

HF SYNDICATE 213Z  
**MARSTON BELLA 1Z**  
 EXAR BLACK BELLE 0046

HA OUTSIDE 3008  
 HA BLACKCAP LADY 1602  
 HF TIGER 5T  
 HF ROSEBUD 94P  
 HF KODIAK 5R  
 HF ECHO 84R  
 BC 7022 RAVEN 7965  
 ESCO BLACK BELLE 209T

Act BW	76
Adj WW	802
Adj YW	1296
ADG	3.09



BW	0.0
WW	68
YW	127
CED	13.0
CEM	9.0
Milk	22
CW	51
MARB	0.39
REA	0.39
FAT	-0.007

Phenotype...check! Genotype...check! Rambler is easy on the eyes from all angles. Long bodied, lots of muscle expression protruding through his thick hair coat. Lots of shape, and mature masculine crest. He is just a nice-looking bull that will be a pen favorite to many. We are so pleased with these Roper calves and their ability to carry their power in such a majestic way. When you study his EPD's its hard not to fall in love, being above breed average in almost every category adds to the appeal and balance of this bull. He's just really good at a lot of things. This is a calving ease bull that is going to add some punch to your calves in the right way. His maternal sister, HF Bella 69H, sold in our 2021 sale to CJR Cattle Company for \$10,000. His maternal brother, HF Breakout 46E, sold to WA Ranches/ University of Calgary for \$8,000.

## 41J

Bull • HAMI 41J • January 11 2021 • #2227422

### HF MEDIATOR 41J

HF SYNDICATE 213Z  
**HF INTERVENTION 65G**  
 HF TIBBIE 239E

HF COWBOY CADILLAC 128E  
**HF ECHO 11G**  
 HF ECHO 31E

CONNEALY CONSENSUS 7229  
 HF MISS BLACKCAP 27R  
 HF G-MAN 29B  
 HF TIBBIE 192X  
 HA COWBOY UP 5405  
 HF MISS BLACKCAP 296Y  
 BAR-H CROSSFIRE 63A  
 HF ECHO 180Z

Act BW	79
Adj WW	774
Adj YW	1174
ADG	2.50

EPD	BW	WW	YW	CED	CEM	Milk	CW	MARB	REA	FAT
	2.7	65	120	5.0	4.0	30	52	0.28	0.44	0.031



I walk around like everything is fine. But deep down, inside my shoe, my sock is sliding off.



**42J**

Bull • HAMI 42J • January 11 2021 • #2207912

**HF LOCKUP 42J**

MAY-WAY BREAKOUT 1310	AVF BREAKOUT 5409	Act BW	85							
<b>HF ALCATRAZ 60F</b>	MAY-WAY LADY BANDO 086	Adj WW	765							
HF MAYFLOWER 191Z	HF TIGER 5T	Adj YW	1271							
	HF MAYFLOWER 78P	ADG	3.16							
HF WHO'S THAT 7A	HF TIGER 5T									
<b>HF TIBBIE 14D</b>	HF LUCY 317Y									
HF TIBBIE 77Z	CONNEALY CONSENSUS 7229									
	HF TIBBIE 100M									
<b>EPD</b>	<b>BW</b>	<b>WW</b>	<b>YW</b>	<b>CED</b>	<b>CEM</b>	<b>Milk</b>	<b>CW</b>	<b>MARB</b>	<b>REA</b>	<b>FAT</b>
	1.9	57	105	6.0	2.0	30	47	0.51	0.55	0.024



**46J**

Bull • HAMI 46J • January 12 2021 • #2207916

**HF SHACKLE 46J**

MAY-WAY BREAKOUT 1310	AVF BREAKOUT 5409	Act BW	73							
<b>HF ALCATRAZ 60F</b>	MAY-WAY LADY BANDO 086	Adj WW	760							
HF MAYFLOWER 191Z	HF TIGER 5T	Adj YW	1282							
	HF MAYFLOWER 78P	ADG	3.26							
HA COWBOY UP 5405	HA OUTSIDE 3008									
<b>HF ROSEBUD 199E</b>	HA BLACKCAP LADY 1602									
HF ROSEBUD 98P	RIVERBEND POWERLINE 0050									
	HF ROSEBUD 138J									
<b>EPD</b>	<b>BW</b>	<b>WW</b>	<b>YW</b>	<b>CED</b>	<b>CEM</b>	<b>Milk</b>	<b>CW</b>	<b>MARB</b>	<b>REA</b>	<b>FAT</b>
	0.5	52	95	9.0	8.0	28	32	0.47	0.39	0.010

*Thank You* for co-sponsoring sale-day shuttle services



One of Calgary's premier links style destinations!  
 (403)-946-5200  
[www.beaverdadmgolf.ca](http://www.beaverdadmgolf.ca)



**47J**

Bull • WACE 47J • January 12 2021 • #2207917

**HF NORTHERN CHILL 47J**

SCHIEFELBEIN ATTRACTIVE 4565  
**SCHIEFELBEIN SHOWMAN 338**  
FROSTY ELBA 3745

HF KODIAK 5R

**HF MISTRESS 196Z**

HF MISTRESS 6M

JMB TRACTION 292  
FROSTY ANSWER 3979  
S A V RENOWN 3439  
FROSTY UPWARD 1100  
SANDY BAR ADVANTAGE 43M  
WILBAR RUBY 955N  
GREENS PREMIUM 7578  
EXAR MISTRESS 9481

Act BW 87

Adj WW 839

Adj YW 1389

ADG 3.44

BW 1.8  
WW 75  
YW 132  
CED 4.0  
CEM 8.0  
Milk 24  
CW 52  
MARB 0.26  
REA 0.63  
FAT -0.017



Maternal brother, HF Ice Box 103H, sold to Wheatland Farming Company for \$11,000



Maternal Brother, HF Country Smile 11F, sold to Bull Pound Ranch for \$15,000

This Showman bull will stop you in your tracks when you lay eyes on him. He is wide and thick with true angus character. His mother is no stranger when it comes to producing top sellers. Maternal brothers have sold to Wheatland Farming for \$11,000.00, Bull Pound Ranch for \$15,000.00, East & West Ranching for \$10,000.00, plus two maternal sisters to Northern Chill sold through past sales for \$9,000.00 each, going to Westcan Cattle Co. and Maureen Marston. HF Mistress 196Z has proved her worth and will be joining our embryo donor program this spring. She is a CAA Elite/Premier Dam.

**48J**

Bull • HAMI 48J • January 12 2021 • #2227423

**HF INTERVENTION 48J**

HF SYNDICATE 213Z  
**HF INTERVENTION 65G**  
HF TIBBIE 239E

BARTELS ELEMENT 1028 65I  
**HF TIBBIE 222G**  
HF TIBBIE 221E

CONNEALY CONSENSUS 7229  
HF MISS BLACKCAP 27R  
HF G-MAN 29B  
HF TIBBIE 192X  
POSS ELEMENT 215  
BLACK LOU 6040 1028 BARTELS  
MUSGRAVE BIG SKY  
HF TIBBIE 168A

Act BW 65

Adj WW 729

Adj YW 1223

ADG 3.09



EPD	BW	WW	YW	CED	CEM	Milk	CW	MARB	REA	FAT
	0.0	51	93	10.0	11.0	31	47	0.52	0.35	0.016



It's called Karma, and it's pronounced, 'Haha, f\*\*\* you'.



**58J** Bull • HAMI 58J • January 14 2021 • #2207926

**HF KARMA 58J**

BASIN PAYWEIGHT 1682	BASIN PAYWEIGHT 006S
<b>POSS MAVERICK</b>	21AR O LASS 7017
POSS PRIDE 5163	POSS HOOVER DAM 2509
	POSS PRIDE 9526
HF REBEL 53Y	HF TIGER 5T
<b>HF ROSEBUD 50A</b>	HF TIBBIE 103T
HF ROSEBUD 98P	RIVERBEND POWERLINE 0050
	HF ROSEBUD 138J

Act BW	84
Adj WW	742
Adj YW	1203
ADG	2.88

BW	2.3
WW	56
YW	94
CED	2.0
CEM	5.0
Milk	29
CW	49
MARB	0.93
REA	0.48
FAT	0.036



Maternal brother, HF 137H, sold to East & West Ranch for \$14,000



Dam, HF Rosebud 50A

This bull will grab your attention, especially from the rear view. Solid built, wide, extensive rib and barrel shape...the real easy keeping kind. Karma's dam has done this many times before. Three maternal brothers to Karma have sold through past sales to East & West Ranching for an average price of \$13,500.00. Another brother sold to Tafika Angus for \$16,000.00. HF Rosebud 50A is a tank of a cow, a model Rebel daughter with great feet and udder attachment.



We didn't have the best yields, but we were very fortunate considering the tough growing season



Maternal brother, HF Pit Boss 25G, sold to Semex for \$14,000



Maternal sister, HF Miss Blackcap 147F, sold to JK Fraser & Compass Ranch for \$15,000

**59J**

Bull • HAMI 59J • January 14 2021 • #2207927

**HF BRASS 59J**

MAY-WAY BREAKOUT 1310  
**HF ALCATRAZ 60F**  
HF MAYFLOWER 191Z

KR STATUS 4267  
**HF MISS BLACKCAP 45D**  
HF MISS BLACKCAP 258B

AVF BREAKOUT 5409  
MAY-WAY LADY BANDO 086  
HF TIGER 5T  
HF MAYFLOWER 78P  
KROUPALS B&B IDENTITY  
WK QUEEN 1423  
PLEASANT VALLEY LUTE 1207  
HF MISS BLACKCAP 27R

Act BW	83
Adj WW	751
Adj YW	1340
ADG	3.68

BW	0.7
WW	47
YW	91
CED	8.0
CEM	7.0
Milk	33
CW	43
MARB	0.70
REA	0.48
FAT	0.044



You'll have to pay attention to this one, this pedigree has a lot to offer! Brass is a stout bugger with great hair, foot quality, and disposition! Watch this bull get out and move and enjoy the view when you stand behind him. If he does half as well as his predecessors, he will be doing just fine. His mother, HF Miss Blackcap 45D, is a beautiful cow that is as consistent as they come and has made a statement with every single calf she has raised. Her first heifer, HF Miss Blackcap 147F, calf sold to JK Fraser & Compass Ranch for \$15,000. This heifer then went on to produce her first heifer calf, Compass Miss Blackcap 5J, that sold in the 2021 Angus Collection Sale to Bar-E-L for \$25,000. Her second calf, HF Pit Boss 25G, sold to Semex Beef for \$14,000. Pit Boss was also Senior Bull Calf Champion at Canadian Western Agribition in 2019. Her third calf, HF Miss Blackcap 91H, sold to Grand River Angus for \$10,500. This young cow seems to do it every year, and she has done it again!

*Sight Unseen Purchase Plan...*

We would like you to attend our sale, but if you cannot, you can have Rob or Gail personally handle your purchase. Call them with your specifications and discuss the offering, preferably a week before the sale. Rob and Gail will gladly assist you with your selections and represent you on sale day.

We guarantee full satisfaction upon delivery or you don't own him.

Rob's cell 403-540-3186

Gail's cell 403-540-8291

Joel's Cell 403-808-6341

Dave's cell 587-586-5445



Rob & Gail Hamilton



Joel Hamilton



Dave Moon



**60J** Bull • HAMI 60J • January 14 2021 • #2208112

**HF DENALI 60J**

- |                           |                        |
|---------------------------|------------------------|
| SITZ STELLAR 726D         | MOHNEN SUBSTANTIAL 272 |
| <b>SITZ PROFOUND 680G</b> | SITZ PRIDE 200B        |
| SITZ EPPONIA 223C         | SITZ UPWARD 9873       |
|                           | SITZ EPPONIA 31Z       |
| HA COYBOY UP 5405         | HA OUTSIDE 3008        |
| <b>HF TIBBIE 54F</b>      | HA BLACKCAP LADY 1602  |
| HF TIBBIE 25Z             | HF TIGER 5T            |
|                           | HF TIBBIE 21U          |

Act BW	82
Adj WW	812
Adj YW	1424
ADG	3.82



BW	1.4
WW	65
YW	126
CED	6.0
CEM	5.0
Milk	28
CW	46
MARB	0.52
REA	0.40
FAT	0.009



Maternal Sire, HA Cowboy Up 5405

Denali is a bull that tips the scale, with a weaning weight at 812lbs and adj. yearling over 1400lbs, this Profound son has tremendous growth. He is one of the heavier bulls in the offering that is wide based, wide topped, all the while maintaining a very cool look! This guy will impress you from every angle. His dam is a very nice Cowboy Up daughter, one of many here in the herd that we love. With Denali being just her second calf, we look forward to what this young cow will produce for us in the future!



Paternal Grand Sire, Sitz Stellar 726D



**63J** Bull • HAMI 63J • January 15 2021 • #2207929

**HF HOSS 63J**

- |                        |                           |        |      |
|------------------------|---------------------------|--------|------|
| MAY-WAY BREAKOUT 1310  | AVF BREAKOUT 5409         | Act BW | 89   |
| <b>HF ALCATRAZ 60F</b> | MAY-WAY LADY BANDO 086    | Adj WW | 726  |
| HF MAYFLOWER 191Z      | HF TIGER 5T               | Adj YW | 1259 |
|                        | HF MAYFLOWER 78P          | ADG    | 3.33 |
| YOUNG DALE YOHANN 39Y  | YOUNG DALE KNOCK OUT 134U |        |      |
| <b>HF ECHO 197A</b>    | YOUNG DALE BLACKBIRD 83R  |        |      |
| HF ECHO 265X           | SOUTHLAND EXCLUSIVE 62U   |        |      |
|                        | HF ECHO 30N               |        |      |

EPD	BW	WW	YW	CED	CEM	Milk	CW	MARB	REA	FAT
	3.0	51	97	-2.0	3.0	25	38	0.49	0.48	0.026

**64J**

Bull • HAMI 64J • January 15 2021 • #2207930

**HF ROPER 64J**

HF TIGER 5T  
**HF ROPER 27F**  
 HF ROSEBUD 246Z

HA OUTSIDE 3008  
 HA BLACKCAP LADY 1602  
 HF TIGER 5T  
 HF ROSEBUD 94P  
 R B ACTIVE DUTY 0010X  
 MALSONS JILT 13Z  
 MCATL PURE PRODUCT 903-55  
 HF MISS LUCY 39X

Act BW 66  
 Adj WW 784  
 Adj YW 1217  
 ADG 2.71



NORTH CAMP SILVER STAR 5103  
**HF MISS LUCY 42G**  
 HF MISS LUCY 129Z

EPD	BW	WW	YW	CED	CEM	Milk	CW	MARB	REA	FAT
-1.5	66	116	15.0	11.0	18	44	0.41	0.21	0.021	

**70J**

Bull • JHF 70J • January 15 2021 • #2224273

**HF RADICAL 70J**

BAR-E-L CUTTING EDGE 124D  
**BAR-E-L EXPANSION 12G**  
 BAR-E-L MAGNOLIA 105D

MUSGRAVE BIG SKY  
 DBRL 94T BRIDE 4W MAF  
 BROOKING OPEN ROAD 4051  
 BAR-E-L MAGNOLIA 78Z  
 KROUPALS B&B IDENTITY DDF  
 WK QUEEN 1423  
 HF FREE WHEELER 191N  
 HF BLACKBIRD 116N

Act BW 85  
 Adj WW 692  
 Adj YW 1220  
 ADG

KR STATUS 4267  
**HF BLACKBIRD 160D**  
 HF BLACKBIRD 97S

EPD	BW	WW	YW	CED	CEM	Milk	CW	MARB	REA	FAT
2.4	41	72	3.0	7.0	23	-	-	-	-	

**Tom McNeely***Co-Founder***(780) 679-7220**

tomj.mcneely@bullseyefeeds.ca

It is a pleasure working with the team at Hamilton Farms. The moment you drive in the yard, it's easy to see the attention to detail and pursuit of excellence they strive for. I hope you can make the sale and see the impressive offering of bulls they have raised.

The bull feeding program is built to maximize forage utilization and gut health; they are developed on grass with their moms on a strict mineral program. All the forages are sampled and analyzed to ensure quality forages are used. Once the calves are weaned, they are slowly moved onto a balanced

TMR. The bulls are challenged with a forage-based TMR to help them develop and express their genetic potential. Matching suitable protein sources with proper starch is key to promoting lean muscle growth. Organic minerals are used to ensure proper immune function and overall health.

If you have any questions about the nutrition program, please feel free to reach out. Buy with confidence knowing the bulls have been developed on a balanced nutrition program. Good luck on sale day.





**72J**

Bull • HAMI 72J • January 16 2021 • #2207935

**HF HIGH CALIBER 72J**

MAY-WAY BREAKOUT 1310  
**HF ALCATRAZ 60F**  
 HF MAYFLOWER 191Z

HF SYNDICATE 213Z  
**HF TIBBIE 188C**  
 HF TIBBIE 179W

AVF BREAKOUT 5409  
 MAY-WAY LADY BANDO 086  
 HF TIGER 5T  
 HF MAYFLOWER 78P  
 CONNEALY CONSENSUS 7229  
 HF MISS BLACKCAP 27R  
 HF HEMI 151T  
 HF TIBBIE 84D

Act BW	90
Adj WW	848
Adj YW	1392
ADG	3.40

BW	3.5
WW	59
YW	107
CED	1.0
CEM	2.0
Milk	31
CW	38
MARB	0.48
REA	0.46
FAT	0.014



Dam, HF Tibbie 188C



Maternal grand sire, HF Syndicate 213Z

With this guy, everything you need to know is in the name. High Caliber possesses that rugged herd bull look, he's thick from front to back, and he stands square and proud. He weaned off his mother at an impressive 848lbs and has carried his weight through nicely. If you need some punch in your calves and to stock your replacement pen, this will fit the bill. His mother, HF Tibbie 188C, is a tanky, long cow that has a great udder and has done an exceptional job for us. The Tibbie cow family speaks for itself when mentioning what they have done for us in the past!



Dave Moon and the newest addition to our calving crew, Neal McEnroe



Bruce making sure every pound of feed is accounted for on this dry year





Dam, HF Evening Tinge 91G



Maternal grand dam, HF Evening Tinge 118Z

**76J**

Bull • HAMI 76J • January 17 2021 • #2207937

**HF DIRECTOR 76J**

SCHIEFELBEIN ATTRACTIVE 4565  
**SCHIEFELBEIN SHOWMAN 338**  
 FROSTY ELBA 3745

JMB TRACTION 292  
 FROSTY ANSWER 3979  
 S A V RENOWN 3439  
 FROSTY UPWARD 1100  
 HA OUTSIDE 3008  
 HA BLACKCAP LADY 1602  
 HF TIGER 5T  
 HF EVENING TINGE 55N

Act BW	70
Adj WW	805
Adj YW	1427
ADG	3.89



BW	0.2
WW	74
YW	137
CED	11.0
CEM	10.0
Milk	25
CW	49
MARB	0.33
REA	0.50
FAT	-0.012

HF Director 76J will make a true breeding piece for his new owner. He descends from a royal cow family and his young two year old dam has shot out of the gate, weaning Director off at a respectable 805 pounds, during a less than stellar, dry growing season. His adjusted yearling weight at 1427 and birth EPD at +.3 make him one of the 'must see' bulls of the sale. His Grand Dam, Evening Tinge 118Z, has been a solid producer for us, producing a \$20,000.00 heifer calf which sold to Bar-E-L Angus, and has now become an Elite Donor for their program. Other sons of 118Z have sold to East & West Ranching for \$12,000.00, Chico Ranches for \$13,000.00 and Alta Genetics for \$14,000.00. 118Z has also earned her way into the donor pen and is producing well! Director 76J is an opportunity waiting to happen.

*Carcass Data...*

All sale bulls have been scanned with ultrasound by Rod Wendorff. Carcass information will be available on our website as well as on supplement sheet on sale day.

Rod Wendorff, Ultrasound Specialist





**77J** Bull • WACE 77J • January 17 2021 • #2207938

**HF ALCATRAZ 77J**

MAY-WAY BREAKOUT 1310	AVF BREAKOUT 5409	Act BW 70
<b>HF ALCATRAZ 60F</b>	MAY-WAY LADY BANDO 086	Adj WW 707
HF MAYFLOWER 191Z	HF TIGER 5T	Adj YW 1140
	HF MAYFLOWER 78P	ADG 2.71
BSF HOT LOTTO 1401	BARSTOW CASH	
<b>HF MISTRESS 154D</b>	BSF PRINCESS EL CAP W2	
HF MISTRESS 98Y	HF TIGER 5T	
	HF MISTRESS 6M	

EPD	BW	WW	YW	CED	CEM	Milk	CW	MARB	REA	FAT
-0.9	49	89	12.0	11.0	28	43	0.40	0.57	0.039	



**79J** Bull • HAMI 79J • January 18 2021 • #2207940

**HF WITNESS 79J**

MAY-WAY BREAKOUT 1310	AVF BREAKOUT 5409	Act BW 85
<b>HF ALCATRAZ 60F</b>	MAY-WAY LADY BANDO 086	Adj WW 795
HF MAYFLOWER 191Z	HF TIGER 5T	Adj YW 1379
	HF MAYFLOWER 78P	ADG 3.65
HF EL TIGRE 28U	HF KODIAK 5R	
<b>HF ROSEBUD 42X</b>	HF ECHO 84R	
HF ROSEBUD 150P	HF POWER SOURCE 94M	
	HF ROSEBUD 150L	

EPD	BW	WW	YW	CED	CEM	Milk	CW	MARB	REA	FAT
2.4	48	89	4.0	5.0	31	35	0.32	0.46	0.016	



Dam, HF Tibbie 86G, sold to 3G Cattle Ventures for \$22,000



Maternal grand dam, HF Tibbie 258W

**80J** Bull • HAMI 80J • January 18 2021 • #2230524

**HF RINGMASTER 80J**

SCHIEFELBEIN ATTRACTIVE 4565	JMB TRACTION 292	Act BW 70
<b>SCHIEFELBEIN SHOWMAN 338</b>	FROSTY ANSWER 3979	Adj WW 760
FROSTY ELBA 3745	S A V RENOWN 3439	Adj YW 1293
	FROSTY UPWARD 1100	ADG 3.33
MUSGRAVE 316 STUNNER	LD CAPITALIST 316	
<b>HF TIBBIE 86G</b>	MCATL BLACKBIRD 831-1378	
HF TIBBIE 258W	DUFF ENCORE 702	
	HF TIBBIE 153R	



BW	-0.4
WW	62
YW	112
CED	8.0
CEM	9.0
Milk	29
CW	51
MARB	0.34
REA	0.73
FAT	0.017

This herdsire prospect is the first coupon clipped from a very promising, beautifully made 316 daughter which Cole Giles purchased from us through the Angus Collection sale in 2020 for \$22,000.00. Ringmaster 80J will be a calving ease specialist and his balanced set of EPD's will be the icing on the cake.

**81J**

Bull • HAMI 81J • January 18 2021 • #2207941

**HF HOT METAL 81J**

HA COWBOY UP 5405  
**HF GOLD BUCKLE 92E**  
 HF BETTY 51B

HF KODIAK 250U  
**HF JUNE 76Y**  
 HF JUNE 198T

HA OUTSIDE 3008  
 HA BLACKCAP LADY 1602  
 HF REBEL 53Y  
 HF BETTY 29N  
 HF KODIAK 5R  
 2HR TIBBIE 18R  
 2HR WONDERBOY 15N  
 2HR JUNE 4R

Act BW 83  
 Adj WW 821  
 Adj YW 1193  
 ADG 2.33



EPD	BW	WW	YW	CED	CEM	Milk	CW	MARB	REA	FAT
	1.8	52	90	7.0	10.0	22	17	-0.15	0.27	0.012

**84J**

Bull • HAMI 84J • January 18 2021 • #2207943

**HF ALCATRAZ 84J**

MAY-WAY BREAKOUT 1310  
**HF ALCATRAZ 60F**  
 HF MAYFLOWER 191Z

HA COWBOY UP  
**HF EVENING TINGE 210F**  
 HF EVENING TINGE 157U

AVF BREAKOUT 5409  
 MAY-WAY LADY BANDO 086  
 HF TIGER 5T  
 HF MAYFLOWER 78P  
 HA OUTSIDE 3008  
 HA BLACKCAP LADY 1602  
 BWB TRAVELER 110P  
 HF EVENING TINGE 127L

Act BW 75  
 Adj WW 650  
 Adj YW 1285  
 ADG 3.97



EPD	BW	WW	YW	CED	CEM	Milk	CW	MARB	REA	FAT
	1.1	52	92	7.0	6.0	24	44	0.19	0.59	-0.003



Dam, HF Erica 306E



Great granddam, HF Erica 26T

This wide bodied tank has got considerable attention by many who have passed through our bull pens this fall. HF Center of Mass posted a moderate birth weight of 85 pounds along with a very respectable weaning weight of 837 pounds. His dam is a big volumed attractive female that is working her way up to the front of the herd.

**86J**

Bull • HAMI 86J • January 18 2021 • #2207944

**HF CENTER OF MASS 86J**

SCHIEFELBEIN ATTRACTIVE 4565  
**SCHIEFELBEIN SHOWMAN 338**  
 FROSTY ELBA 3745

BAR-H CROSSFIRE 63A  
**HF ERICA 306E**  
 HF ERICA 20X

JMB TRACTION 292  
 FROSTY ANSWER 3979  
 S A V RENOWN 3439  
 FROSTY UPWARD 1100  
 LD CAPITALIST 316  
 MCATL BLACKBIRD 831-1378  
 DUFF ENCORE 702  
 HF TIBBIE 153R

Act BW 85  
 Adj WW 837  
 Adj YW 1376  
 ADG 3.37

BW 2.6  
 WW 85  
 YW 153  
 CED 4.0  
 CEM 10.0  
 Milk 21  
 CW 53  
 MARB 0.21  
 REA 0.73  
 FAT 0.002



**88J**

Bull • HAMI 88J • January 18 2021 • #2207945

**HF ALCATRAZ 88J**

MAY-WAY BREAKOUT 1310	AVF BREAKOUT 5409	Act BW	78							
<b>HF ALCATRAZ 60F</b>	MAY-WAY LADY BANDO 086	Adj WW	748							
HF MAYFLOWER 191Z	HF TIGER 5T	Adj YW	1243							
BAR-H CROSSFIRE 63A	HF MAYFLOWER 78P	ADG	3.09							
<b>HF ERICA 234F</b>	S TITLES 1145									
HF ERICA 189B	HF TIBBIE 93U									
	WK SMOOTH 2382									
	HF ERICA 26T									
EPD	BW	WW	YW	CED	CEM	Milk	CW	MARB	REA	FAT
	1.1	53	100	7.0	6.0	28	41	0.35	0.55	0.036



**89J**

Bull • JHF 89J • January 19 2021 • #2227424

**HF DIPLOMACY 89J**

HF SYNDICATE 213Z	CONNELLY CONSENSUS 7229	Act BW	84							
<b>HF INTERVENTION 65G</b>	HF MISS BLACKCAP 27R	Adj WW	788							
HF TIBBIE 239E	HF G-MAN 29B	Adj YW	1282							
KOUPAL KOZI 418	HF TIBBIE 192X	ADG	3.09							
<b>HF MAYFLOWER 133G</b>	KOUPAL KOZI 22									
HF MAYFLOWER 17X	KOUPAL EBONETTE 263									
	HF TIGER 5T									
	HF MAYFLOWER 67U									
EPD	BW	WW	YW	CED	CEM	Milk	CW	MARB	REA	FAT
	3.4	56	108	3.0	2.0	36	55	0.37	0.49	0.018



**91J**

Bull • HAMI 91J • January 19 2021 • #2207947

**HF SHOWMAN 91J**

SCHIEFELBEIN ATTRACTIVE 4565	JMB TRACTION 292	Act BW	82							
<b>SCHIEFELBEIN SHOWMAN 338</b>	FROSTY ANSWER 3979	Adj WW	819							
FROSTY ELBA 3745	S A V RENOWN 3439	Adj YW	1430							
HA COWBOY UP 5405	FROSTY UPWARD 1100	ADG	3.82							
<b>HF ROSEBUD 142F</b>	HA OUTSIDE 3008									
HF ROSEBUD 246Z	HA BLACKCAP LADY 1602									
	HF TIGER 5T									
	HF ROSEBUD 94P									
EPD	BW	WW	YW	CED	CEM	Milk	CW	MARB	REA	FAT
	1.1	78	144	10.0	9.0	26	55	0.41	0.57	-0.021



*Just a note about our feeding program!*

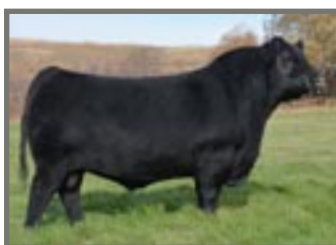
The entire bull offering has been developed on a high roughage Total Mixed Ration which has been formulated to maximize nutrition without adding excessive weight gain.

Our target for gain on our bulls is approximately 3 pounds/day and we like to see the bulls with moderate flesh, athletic, and ready to go to work for their new owners. We know it is very difficult to properly appraise cattle with excessive body condition and we feel it is very beneficial to you, the buyer, to view the cattle when they are fresh and with visual muscle definition.

We understand, and pay attention to the fact, that we are in a performance driven business and we strive to source genetics which will help add pounds to your calves, and leave you with desirable replacement females.



Maternal grand dam, HF Annie 10E



Paternal grand sire, May-Way Breakout 1310

**92J**

Bull • HAMI 92J • January 19 2021 • #2207948

**HF BULLET PROOF 92J**

MAY-WAY BREAKOUT 1310  
**HF ALCATRAZ 60F**  
HF MAYFLOWER 191Z

BARTELS ELEMENT 1028 651  
**HF ANNIE 275G**  
HF ANNIE 10E

AVF BREAKOUT 5409  
MAY-WAY LADY BANDO 086  
HF TIGER 5T  
HF MAYFLOWER 78P  
POSS ELEMENT 215  
BLACK LOU 6040 1028 BARTELS  
BSF HOT LOTTO 1401  
HF ANNIE 212Y

Act BW	77
Adj WW	869
Adj YW	1353
ADG	3.02



BW	1.4
WW	67
YW	115
CED	8.0
CEM	8.0
Milk	35
CW	38
MARB	0.57
REA	0.60
FAT	0.036

A heifer bull out of a first calf heifer! Bullet Proof was born light and weaned heavy, being at the top end of weights on weaning day at 869lbs! He stands proud and true, with a very mature masculine neck and crest. Bullet Proof is wide all the way through and has the thick Alcatraz hair coat to go with it. Pictures can speak volumes and you'll be equally impressed with his phenotype when you see him in person! His mother has cracked the gate with an impressive first calf.

**93J**

Bull • HAMI 93J • January 19 2021 • #2207949

**HF ALCATRAZ 93J**

MAY-WAY BREAKOUT 1310  
**HF ALCATRAZ 60F**  
HF MAYFLOWER 191Z  
  
MUSGRAVE SKY HIGH 1535  
**GREENWOOD GRACE JJP 19G**  
BLAIR'S GRACE 316C

AVF BREAKOUT 5409  
MAY-WAY LADY BANDO 086  
HF TIGER 5T  
HF MAYFLOWER 78P  
MUSGRAVE BIG SKY  
FLAG QUEEN W 00649  
BNC GAME CHANGER 1Y  
BLAIRS GRACE 903Y

Act BW	78
Adj WW	734
Adj YW	1240
ADG	3.16

EPD	BW	WW	YW	CED	CEM	Milk	CW	MARB	REA	FAT
	2.5	49	86	4.0	5.0	29	29	0.44	0.59	0.048





94J

Bull • HAMI 94J • January 19 2021 • #2207950

**HF BROADWAY 94J**

SCHIEFELBEIN ATTRACTIVE 4565  
**SCHIEFELBEIN SHOWMAN 338**  
 FROSTY ELBA 3745

HF REBEL 53Y  
**HF ECHO 110C**  
 HF ECHO 120W

JMB TRACTION 292  
 FROSTY ANSWER 3979  
 S A V RENOWN 3439  
 FROSTY UPWARD 1100  
 HF TIGER 5T  
 HF TIBBIE 103T  
 SANDY BAR IDEAL 18S  
 HFDF ECHO 13N

Act BW	85
Adj WW	839
Adj YW	1434
ADG	3.72

EPD	BW	WW	YW	CED	CEM	Milk	CW	MARB	REA	FAT
	2.4	80	147	4.0	8.0	29	58	0.20	0.76	-0.020



99J

Bull • HAMI 99J • January 20 2021 • #2207955

**HF FUNDAMENTAL 99J**

SITZ STELLAR 726D  
**SITZ PROFOUND 680G**  
 SITZ EPPONIA 223C

BUSHES DOMINO EFFECT 607  
**HF BETTY 184G**  
 HF BETTY 164W

MOHNEN SUBSTANTIAL 272  
 SITZ PRIDE 200B OSF  
 SITZ UPWARD 9873  
 SITZ EPPONIA 31Z  
 S WHITLOCK 179  
 BUSHES TIME QUEEN 8852  
 HF TIGER 5T  
 HF BETTY 115G

Act BW	80
Adj WW	854
Adj YW	1320
ADG	2.92

BW	2.6
WW	69
YW	131
CED	1.0
CEM	7.0
Milk	25
CW	52
MARB	0.37
REA	0.52
FAT	0.027



Maternal brother to dam, HF Binghamton 36Z, sold to Double F. Cattle for \$23,000



Maternal brother to dam, HF Negotiator 280C, sold to Lewis Farms for \$29,000

Fundamental is one you don't want to miss. An impressive 854lbs at weaning, and an EPD ranking in the top 1% on Yearling Weight, this guy doesn't lack any performance. His mother did an awesome job raising her first calf, and that's no surprise when you look to the grand dam. HF Betty 164W is a picture-perfect Tiger daughter that has produced time and time again making her a CAA Elite/ Premiere dam since 2018! Some notable progeny from 164W include, HF Binghamton 36Z, selling to Double F Cattle for \$23,000 and HF Ride On 121E, who sold to Joe & Sandy Bandura for \$15,500.

**101J**

Bull • HAMI 101J • January 20 2021 • #2224276

**HF ROGUE 101J**

BAR-E-L CUTTING EDGE 124D  
**BAR-E-L EXPANSION 12G**  
 BAR-E-L MAGNOLIA 105D

MCATL PURE PRODUCT 903-55  
**HF MISS LUCY 129Z**  
 HF MISS LUCY 39X

MUSGRAVE BIG SKY  
 DBRL 94T BRIDE 4W  
 BROOKING OPEN ROAD 4051  
 BAR-E-L MAGNOLIA 78Z  
 CONNEALY FINAL PRODUCT  
 M A ESTA 55-252 CAF  
 HF TIGER 5T  
 HF MISS LUCY 110G

Act BW	88
Adj WW	707
Adj YW	1124
ADG	2.60

EPD	BW	WW	YW	CED	CEM	Milk	CW	MARB	REA	FAT
	3.5	49	84	-1.0	6.0	22	-	-	-	-

**104J**

Bull • HAMI 104J • January 21 2021 • #2224301

**HF SALUTE 104J ET**

SCHIEFELBEIN ATTRACTIVE 4565  
**SCHIEFELBEIN SHOWMAN 338**  
 FROSTY ELBA 3745

HF TIGER 5T  
**HF MAYFLOWER 191Z**  
 HF MAYFLOWER 78P

JMB TRACTION 292  
 FROSTY ANSWER 3979  
 S A V RENOWN 3439  
 FROSTY UPWARD 1100  
 HF KODIAK 5R  
 HF ECHO 84R  
 HF JUSTICE 52L  
 SCHELL'S MAYFLOWER 4F

Act BW	50
Adj WW	655
Adj YW	1161
ADG	3.16

EPD	BW	WW	YW	CED	CEM	Milk	CW	MARB	REA	FAT
	-4.1	54	106	9.5	9.5	27	53	0.29	0.91	-0.005

**106J**

Bull • HAMI 106J • January 21 2021 • #2224278

**HF EXPRESSION 106J**

BAR-E-L CUTTING EDGE 124D  
**BAR-E-L EXPANSION 12G**  
 BAR-E-L MAGNOLIA 105D

BAR-H CROSSFIRE 63A  
**HF ROSEBUD 105F**  
 HF ROSEBUD 42X

MUSGRAVE BIG SKY  
 DBRL 94T BRIDE 4W  
 BROOKING OPEN ROAD 4051  
 BAR-E-L MAGNOLIA 78Z  
 S TITEST 1145  
 HF TIBBIE 93U  
 HF EL TIGRE 28U  
 HF ROSEBUD 150P

Act BW	79
Adj WW	728
Adj YW	1139
ADG	2.57

EPD	BW	WW	YW	CED	CEM	Milk	CW	MARB	REA	FAT
	2.3	48	82	5.0	10.0	19	-	-	-	-

**107J**

Bull • HAMI 107J • January 21 2021 • #2233772

**HF SILVER STAR 107J**

NORTH CAMP SILVER STAR 5103  
**HF SILVER STAR 213G**  
 HF ROSEBUD 259C

HF TIGER 5T  
**HF LUCY 167A**  
 HF LUCY 32U

R B ACTIVE DUTY 0010X  
 MALSONS JILT 13Z  
 LLB REFLECTION 607A  
 HF ROSEBUD 217Z  
 HF KODIAK 5R  
 HF ECHO 84R  
 S A V 004 PREDOMINANT 4438  
 2HR LUCY 14R

Act BW	83
Adj WW	788
Adj YW	1238
ADG	2.81

EPD	BW	WW	YW	CED	CEM	Milk	CW	MARB	REA	FAT
	2.2	58	102	5.0	10.0	26	44	0.33	0.53	0.007



HAMILTON FARMS  
2022 SALE BULLS



108J

Bull • HAMI 108J • January 21 2021 • #2207957

**HF IMPRESSION 108J**

SITZ STELLAR 726D  
**SITZ PROFOUND 680G**  
 SITZ EPPONIA 223C

KR BULLSEYE 3451  
**HF TIBBIE 244F**  
 HF TIBBIE 101Z

MOHNEN SUBSTANTIAL 272  
 SITZ PRIDE 200B OSF  
 SITZ UPWARD 9873  
 SITZ EPPONIA 31Z  
 MOGCK BULLSEYE  
 WK QUEEN 1540  
 MCATL PURE PRODUCT 903-55  
 HF TIBBIE 70X

Act BW	75
Adj WW	718
Adj YW	1168
ADG	2.81



EPD	BW	WW	YW	CED	CEM	Milk	CW	MARB	REA	FAT
	1.9	56	112	4.0	8.0	27	54	0.57	0.68	0.013



110J

Bull • HAMI 110J • January 21 2021 • #2207959

**HF TRUE GRIT 110J**

SITZ STELLAR 726D  
**SITZ PROFOUND 680G**  
 SITZ EPPONIA 223C

HF TIGER 5T  
**HF MISS ERICA 141Z**  
 LLB MISS ERICA 353L

MOHNEN SUBSTANTIAL 272  
 SITZ PRIDE 200B OSF  
 SITZ UPWARD 9873  
 SITZ EPPONIA 31Z  
 HF KODIAK 5R  
 HF ECHO 84R  
 EBON HILL VENTURE 48'2000  
 DOUBLE J LASS 336D

Act BW	89
Adj WW	807
Adj YW	1446
ADG	3.99

BW	1.9
WW	55
YW	109
CED	3.0
CEM	5.0
Milk	28
CW	43
MARB	0.40
REA	0.37
FAT	0.024



Dam, HF Miss Erica 141Z



Maternal brother, HF Center Stage 126H, sold to Roymac Angus for \$17,000

True Grit is an absolute wagon. This calf will be one of the heaviest bulls on offer and has had tremendous growth since weaning. True Grit will be a cow maker. He would definitely be one of the favorite Profound bulls in the pen and for good reason. He's built right from the ground up, has lots of shape, and has a proud demeanor. He is a natural calf coming from the famous donor cow, HF Miss Erica 141Z. Where do you even start with this pedigree? His dam has produced with consistency year after year. True Grit being a natural calf out of this cow, means you only get one shot at these genetics. Out of her last 9 calves to sell in our sale, only 1 has sold for less than \$10,000.



**112J**

Bull • HAMI 112J • January 21 2021 • #2207961

**HF BLACKLIST 112J**

SCHIEFELBEIN ATTRACTIVE 4565  
**SCHIEFELBEIN SHOWMAN 338**  
FROSTY ELBA 3745

HF TIGER 5T  
**HF RUBY 4Y**  
WILBAR RUBY 955N

JMB TRACTION 292  
FROSTY ANSWER 3979  
S A V RENOWN 3439  
FROSTY UPWARD 1100  
HF KODIAK 5R  
HF ECHO 84R  
VERMILION YELLOWSTONE  
WILBAR RUBY 161J

Act BW	70
Adj WW	748
Adj YW	1232
ADG	3.02



EPD	BW	WW	YW	CED	CEM	Milk	CW	MARB	REA	FAT
	-2.0	65	122	13.0	12.0	27	60	0.37	0.69	-0.03



**113J**

Bull • WACE 113J • January 21 2021 • #2207962

**HF CONSTABLE 113J**

SCHIEFELBEIN ATTRACTIVE 4565  
**SCHIEFELBEIN SHOWMAN 338**  
FROSTY ELBA 3745

HF DONE RIGHT 125R  
**HF BLACKBIRD 223U**  
HF BLACKBIRD 199P

JMB TRACTION 292  
FROSTY ANSWER 3979  
S A V RENOWN 3439  
FROSTY UPWARD 1100  
BT RIGHT TIME 24J  
HF ROSEBUD 127K  
HF PREMIUM PLUS 74K  
HF BLACKBIRD 126E

Act BW	90
Adj WW	835
Adj YW	1423
ADG	3.68

EPD	BW	WW	YW	CED	CEM	Milk	CW	MARB	REA	FAT
	2.9	63	111	1.0	8.0	25	39	0.24	0.83	-0.027



**115J**

Bull • HAMI 115J • January 22 2021 • #2207964

**HF PROFOUND 115J**

SITZ STELLAR 726D  
**SITZ PROFOUND 680G**  
SITZ EPPONIA 223C

BSF HOT LOTTO 1401  
**HF MISS BLACKCAP 127D**  
HF MISS BLACKCAP 27R

MOHLEN SUBSTANTIAL 272  
SITZ PRIDE 200B OSF  
SITZ UPWARD 9873  
SITZ EPPONIA 31Z  
BARSTOW CASH DDF  
BSF PRINCESS EL CAP W2  
TC FREEDOM 104  
HF MISS BLACKCAP 50N

Act BW	84
Adj WW	737
Adj YW	1215
ADG	2.99



EPD	BW	WW	YW	CED	CEM	Milk	CW	MARB	REA	FAT
	1.9	57	110	3.0	7.0	25	-	-	-	-



**116J**

Bull • HAMI 116J • January 22 2021 • #2224282

**HF HOSTAGE 116J ET**

MAY-WAY BREAKOUT 1310  
**HF ALCATRAZ 60F**  
HF MAYFLOWER 191Z

MCATL PURE PRODUCT 903-55  
**HF TIBBIE 101Z**  
HF TIBBIE 70X

AVF BREAKOUT 5409  
MAY-WAY LADY BANDO 086  
HF TIGER 5T  
HF MAYFLOWER 78P  
CONNELLY FINAL PRODUCT  
M A ESTA 55-252 CAF  
HF TIGER 5T AMF  
HF TIBBIE 91P

Act BW	87
Adj WW	832
Adj YW	1205
ADG	2.95

EPD	BW	WW	YW	CED	CEM	Milk	CW	MARB	REA	FAT
	2.9	47	92	4.5	6.0	33	43	0.49	0.73	0.026





**118J** Bull • HAMI 118J • January 22 2021 • #2207966

**HF ROPER 118J**

HA COWBOY UP 5405	HA OUTSIDE 3008	Act BW 82
<b>HF ROPER 27F</b>	HA BLACKCAP LADY 1602	Adj WW 791
HF ROSEBUD 246Z	HF TIGER 5T	Adj YW 1275
	HF ROSEBUD 94P	ADG 3.02
KR STATUS 4267	KOUPALS B&B IDENTITY	
<b>HF EVENING TINGE 236D</b>	WK QUEEN 1423	
HF EVENING TINGE 55N	RIVERBEND POWERLINE 0050	
	HF EVENING TINGE 106K	

EPD	BW	WW	YW	CED	CEM	Milk	CW	MARB	REA	FAT
0.4	62	118	11.0	8.0	22	43	0.44	0.10	0.011	



**119J** Bull • HAMI 119J • January 22 2021 • #2207967

**HF SHOWMAN 119J**

SCHIEFELBEIN ATTRACTIVE 4565	JMB TRACTION 292	Act BW 75
<b>SCHIEFELBEIN SHOWMAN 338</b>	FROSTY ANSWER 3979	Adj WW 629
FROSTY ELBA 3745	S A V RENOWN 3439	Adj YW 1185
	FROSTY UPWARD 1100	ADG 3.47
MUSGRAVE BIG SKY	CONNELLY EARNAN 076E	
<b>HF LUCY 53D</b>	SAV PRIMROSE 7861	
HF LUCY 2Y	HF KODIAK 5R	
	HF LUCY 258U	

EPD	BW	WW	YW	CED	CEM	Milk	CW	MARB	REA	FAT
1.1	61	116	10.0	13.0	20	46	0.26	0.70	-0.009	



**122J** Bull • HAMI 122J • January 22 2021 • #2207969

**HF TIGER 122J**

HF KODIAK 5R	SANDY BAR ADVANTAGE 43M	Act BW 70
<b>HF TIGER 5T</b>	WILBAR RUBY 955N	Adj WW 762
HF ECHO 84R	TC FREEDOM 104	Adj YW 1134
	HFDF ECHO 6N	ADG 2.33
BUSHES DOMINO EFFECT 607	S WHITLOCK 179	
<b>HF PRIDE 190G</b>	BUSHES TIME QUEEN 8852	
HF PRIDE 373U	JSF REGAN 65R	
	2HR PRIDE 12P	

EPD	BW	WW	YW	CED	CEM	Milk	CW	MARB	REA	FAT
-0.5	49	96	11.0	9.0	27	41	0.37	0.22	0.051	



**126J** Bull • HAMI 126J • January 23 2021 • #2207971

**HF GANGSTER 126J**

MAY-WAY BREAKOUT 1310	AVF BREAKOUT 5409	Act BW 94
<b>HF ALCATRAZ 60F</b>	MAY-WAY LADY BANDO 086	Adj WW 760
HF MAYFLOWER 191Z	HF TIGER 5T	Adj YW 1188
	HF MAYFLOWER 78P	ADG 2.67
KR BULLSEYE 3451	MOGCK BULLSEYE	
<b>HF ANNIE 300D</b>	WK QUEEN 1540	
HF ANNIE 219Y	HF SWAGGER 75W	
	HF ANNIE 265U	

EPD	BW	WW	YW	CED	CEM	Milk	CW	MARB	REA	FAT
3.5	53	96	2.0	2.0	30	43	0.64	0.47	0.032	



Dam, HF Miss Blackcap 191G



Maternal Grand dam, HF Blackcap 228B

### 130J

Bull • HAMI 130J • January 23 2021 • #2207975

### HF DEFLECTION 130J

SITZ STELLAR 726D  
**SITZ PROFOUND 680G**  
SITZ EPPONIA 223C

HA COYBOY UP 5405  
**HF MISS BLACKCAP 191G**  
HF MISS BLACKCAP 228B

MOHNEN SUBSTANTIAL 272  
SITZ PRIDE 200B OSF  
SITZ UPWARD 9873  
SITZ EPPONIA 31Z  
HA OUTSIDE 3008  
HA BLACKCAP LADY 1602  
PLEASANT VALLEY LUTE 1207  
HF MISS BLACKCAP 27R

Act BW	75
Adj WW	824
Adj YW	1307
ADG	3.02

BW	2.1
WW	67
YW	128
CED	4.0
CEM	4.0
Milk	22
CW	44
MARB	0.46
REA	0.26
FAT	0.004



Here is another tremendous Profound son that has caught our eye! He is sound, smooth, and symmetrical. This bull will be able to hoof it in any terrain, he is solid on his feet, and moves very well. Deflection is high performing calf out of a first calf heifer and has a grand dam that stacks this pedigree nice. His dam was on the short list when we sold our pick of the heifer calves to Ranch Covey Hill in 2019 and is just a beautiful cow that we are very excited about. His grand dam HF Miss Blackcap 228B has been a reliable donor in our program for many years. Many of the bulls raised by the grand dam were purchased by astute commercial cattlemen, ranging between \$7,000-\$13,000.

### 133J

Bull • WACE 133J • January 24 2021 • #2207978

### HF FIRING PIN 133J

MAY-WAY BREAKOUT 1310  
**HF ALCATRAZ 60F**  
HF MAYFLOWER 191Z

S A V 004 PREDOMINANT 4438  
**HF MISTRESS 42U**  
HF MISTRESS 6M

AVF BREAKOUT 5409  
MAY-WAY LADY BANDO 086  
HF TIGER 5T  
HF MAYFLOWER 78P  
S A V 8180 TRAVELER 004  
S A V EMBLYNETTE 1182  
GREENS PREMIUM 7578  
MISTRESS 9481

Act BW	75
Adj WW	736
Adj YW	1230
ADG	3.09



EPD	BW	WW	YW	CED	CEM	Milk	CW	MARB	REA	FAT
	-0.4	39	72	9.0	9.0	30	28	0.38	0.37	0.037



The minute you settle for less than you deserve, you get even less than you settled for.



**134J** Bull • HAMI 134J • January 24 2021 • #2207979

**HF RADICAL 134J**

SITZ STELLAR 726D  
**SITZ PROFOUND 680G**  
 SITZ EPPONIA 223C

HF TIGER 5T  
**HF ROSEBUD 66G**  
 HF ROSEBUD 195D

MOHNEN SUBSTANTIAL 272  
 SITZ PRIDE 200B OSF  
 SITZ UPWARD 9873  
 SITZ EPPONIA 31Z  
 HF KODIAK 5R  
 HF ECHO 84R  
 KR STATUS 4267  
 HF ROSEBUD 276Z

Act BW	80
Adj WW	818
Adj YW	1462
ADG	4.03



BW	1.5
WW	63
YW	125
CED	4.0
CEM	6.0
Milk	33
CW	51
MARB	0.64
REA	0.51
FAT	0.028



Maternal brother to dam, HF Birdman 94H, sold to 3G Cattle Ventures for \$11,000



Brother to the maternal grand dam, HF Train Station 179H, sold to Richmond Ranch \$18,000

Here we are again... another Profound bull that is rugged, deep bodied, carrying that depth from his fore rib to his flank, and shows tremendous progress after weaning. Radical has an adj. yearling weight of 1462lbs and has an average daily gain at 4.03lbs/day while consuming a high forage ration designed for 3lbs/day. But that's not all, a power bull that had a nice 80lbs birthweight and weaned off at 818lbs. His mother is a beautiful first calf heifer that has outdone herself here. We are very excited about her potential, because the grandam is also a terrific young cow that is just starting to earn her stripes. The great grand dam is just one of the same, she is a very nice cow and we have kept every single one of her daughters and her bull calves have done exceptional selling for \$14,000 to Leedale Farming Co. and \$18,000 to Richmond Ranch Ltd. This is a bull that has tremendous cows stacked into the pedigree!



Taylor's first branding... the ladies looking powerful in pink

**135J**

Bull • HAMI 135J • January 24 2021 • #2207980

**HF SIDESHOW 135J**

SCHIEFELBEIN ATTRACTIVE 4565  
**SCHIEFELBEIN SHOWMAN 338**  
 FROSTY ELBA 3745

KR BULLSEYE 3451  
**HF ROSEBUD 54E**  
 HF ROSEBUD 97P

JMB TRACTION 292  
 FROSTY ANSWER 3979  
 S A V RENOWN 3439  
 FROSTY UPWARD 1100  
 MOGCK BULLSEYE  
 WK QUEEN 1540  
 HF POWER SOURCE 94M  
 HF ROSEBUD 70H

Act BW 80  
 Adj WW 844  
 Adj YW 1421  
 ADG 3.61



EPD	BW	WW	YW	CED	CEM	Milk	CW	MARB	REA	FAT
	1.5	67	116	5.0	11.0	26	44	0.34	0.68	-0.015

**137J**

Bull • HAMI 137J • January 24 2021 • #2207982

**HF ALCATRAZ 137J**

MAY-WAY BREAKOUT 1310  
**HF ALCATRAZ 60F**  
 HF MAYFLOWER 191Z

HA COWBOY UP 5405  
**HF ECHO 86F**  
 HF ECHO 274X

AVF BREAKOUT 5409  
 MAY-WAY LADY BANDO 086  
 HF TIGER 5T  
 HF MAYFLOWER 78P  
 HA OUTSIDE 3008  
 HA BLACKCAP LADY 1602  
 SOUTHLAND EXCLUSIVE 62U  
 HF ECHO 187N

Act BW 83  
 Adj WW 787  
 Adj YW 1264  
 ADG 2.99



EPD	BW	WW	YW	CED	CEM	Milk	CW	MARB	REA	FAT
	1.6	55	100	6.0	5.0	30	34	0.39	0.45	0.004

**138J**

Bull • JHF 138J • January 24 2021 • #2207983

**HF SEISMIC 138J**

SCHIEFELBEIN ATTRACTIVE 4565  
**SCHIEFELBEIN SHOWMAN 338**  
 FROSTY ELBA 3745

KOUPAL KOZI 418  
**HF MAYFLOWER 121G**  
 HF MAYFLOWER 17X

JMB TRACTION 292  
 FROSTY ANSWER 3979  
 S A V RENOWN 3439  
 FROSTY UPWARD 1100  
 KOUPAL KOZI 22  
 KOUPAL EBONETTE 263  
 HF TIGER 5T AMF CAF  
 HF MAYFLOWER 67U

Act BW 55  
 Adj WW 743  
 Adj YW 1271  
 ADG 3.30



EPD	BW	WW	YW	CED	CEM	Milk	CW	MARB	REA	FAT
	-3.1	63	116	15.0	11.0	32	56	0.32	0.78	-0.005

**139J**

Bull • HAMI 139J • January 24 2021 • #2207984

**HF STOCKADE 139J**

MAY-WAY BREAKOUT 1310  
**HF ALCATRAZ 60F**  
 HF MAYFLOWER 191Z

KR STATUS 4267  
**HF QUEENIE 187D**  
 HF QUEENIE 74A

AVF BREAKOUT 5409  
 MAY-WAY LADY BANDO 086  
 HF TIGER 5T  
 HF MAYFLOWER 78P  
 KOUPALS B&B IDENTITY  
 WK QUEEN 1423  
 HF REBEL 53Y  
 HF QUEENIE 60R

Act BW 80  
 Adj WW 704  
 Adj YW 1215  
 ADG 3.19



EPD	BW	WW	YW	CED	CEM	Milk	CW	MARB	REA	FAT
	0.7	41	78	6.0	6.0	30	37	0.46	0.45	0.030



HAMILTON FARMS  
2022 SALE BULLS



**141J** Bull • HAMI 141J • January 24 2021 • #2227737

**HF AIR TIME 141J ET**

SCHIEFELBEIN ATTRACTIVE 4565  
**SCHIEFELBEIN SHOWMAN 338**  
 FROSTY ELBA 3745

HF TIGER 5T

**HF ROSEBUD 246Z**  
 HF ROSEBUD 94P

JMB TRACTION 292  
 FROSTY ANSWER 3979  
 S A V RENOWN 3439  
 FROSTY UPWARD 1100  
 HF KODIAK 5R  
 HF ECHO 84R  
 HF PROGRESS 20K  
 HF ROSEBUD 198M

Act BW	79
Adj WW	818
Adj YW	1457
ADG	3.99



BW	-0.4
WW	69
YW	134
CED	11.5
CEM	10.0
Milk	27
CW	55
MARB	0.48
REA	0.57
FAT	-0.017



Dam, HF Rosebud 246Z



Maternal brother, HF Roper 27F, sold to Semex for \$42,000

The Showman and Rosebud 246Z mating was all that we anticipated and Air Time is a fine example. He is as long and wide as a boxcar and he can still offer you a good nights sleep during calving season. He posted a 818 lb weaning weight and 1457 lb yearling weight with nearly 4 lbs/day gain post weaning, all this comes with a -.4 birth EPD! When you dig up sale results of past progeny from Rosebud 246Z, the list is long. A quick overview of the dynamic operations which have acquired her genetics are Box Elder Farming, Alta Genetics, T&B Harty, Semex, East & West Ranching, Bull Pound Ranch, Foster Cattle LLC, Bar-E-L Angus, Oliver Schunicht, Tafika Angus, Rio Grande Angus, and many more



**142J** Bull • HAMI 142J • January 24 2021 • #2207985

**HF ACE HIGH 142J**

SCHIEFELBEIN ATTRACTIVE 4565  
**SCHIEFELBEIN SHOWMAN 338**  
 FROSTY ELBA 3745

KR STATUS 4267

**HF ROSEBUD 60D**  
 HF ROSEBUD 50A

JMB TRACTION 292  
 FROSTY ANSWER 3979  
 S A V RENOWN 3439  
 FROSTY UPWARD 1100  
 KROUPALS B&B IDENTITY  
 WK QUEEN 1423  
 HF REBEL 53Y  
 HF ROSEBUD 98P

Act BW	83
Adj WW	709
Adj YW	1248
ADG	3.37



EPD	BW	WW	YW	CED	CEM	Milk	CW	MARB	REA	FAT
	1.6	58	110	5.0	9.0	24	49	0.38	0.63	-0.001

**150J**

Bull • HAMI 150J • January 25 2021 • #2207990

**HF LANDSLIDE 150J**

SCHIEFELBEIN ATTRACTIVE 4565  
**SCHIEFELBEIN SHOWMAN 338**  
 FROSTY ELBA 3745

CONNEALY CONSENSUS 7229  
**HF TIBBIE 171Z**  
 HF TIBBIE 100M

JMB TRACTION 292  
 FROSTY ANSWER 3979  
 S A V RENOWN 3439  
 FROSTY UPWARD 1100  
 CONNEALY CONSENSUS  
 BLUE LILLY OF CONANGA 16  
 REMITALL ICEMAN 10K  
 HF TIBBIE 86K

Act BW 80  
 Adj WW 797  
 Adj YW 1302  
 ADG 3.16



EPD	BW	WW	YW	CED	CEM	Milk	CW	MARB	REA	FAT
	1.0	69	122	4.0	6.0	24	45	0.38	0.74	-0.009

**151J**

Bull • HAMI 151J • January 25 2021 • #2207991

**HF ALCATRAZ 151J**

MAY-WAY BREAKOUT 1310  
**HF ALCATRAZ 60F**  
 HF MAYFLOWER 191Z

KR STATUS 4267  
**HF ROSEBUD 122D**  
 HF ROSEBUD 30A

AVF BREAKOUT 5409  
 MAY-WAY LADY BANDO 086  
 HF TIGER 5T  
 HF MAYFLOWER 78P  
 KROUPALS B&B IDENTITY  
 WK QUEEN 1423  
 HF REBEL 53Y  
 HF ROSEBUD 70H

Act BW 79  
 Adj WW 712  
 Adj YW 1162  
 ADG 2.81



EPD	BW	WW	YW	CED	CEM	Milk	CW	MARB	REA	FAT
	1.2	47	88	4.0	6.0	34	37	0.45	0.48	0.027



Maternal sister, HF Miss Lucy 56H, sold to Arete Farms for \$7,500



Maternal grand sire, Musgrave Big Sky

HF Epicenter will be easy on your heifers and still provide the genetic punch needed to help those young females wean calves with some go to them. Take note of Epicenter's impressive weaning weight of 867 pounds which ratioed 111. Epicenter's young dam is ideal in her make up, being medium sized with maximum rib and body shape. A maternal sister to Epicenter sold through our 2021 sale to Arete Farms for \$7500.00.

**152J**

Bull • HAMI 152J • January 25 2021 • #2207992

**HF EPICENTER 152J**

SCHIEFELBEIN ATTRACTIVE 4565  
**SCHIEFELBEIN SHOWMAN 338**  
 FROSTY ELBA 3745

MUSGRAVE BIG SKY  
**HF MISS LUCY 158E**  
 HF MISS LUCY 202W

JMB TRACTION 292  
 FROSTY ANSWER 3979  
 S A V RENOWN 3439  
 FROSTY UPWARD 1100  
 CONNEALY EARNAN 076E  
 SAV PRIMROSE 7861  
 HF TIGER 5T  
 HF MISS LUCY 110G

Act BW 82  
 Adj WW 867  
 Adj YW 1351  
 ADG 3.02



BW 1.1  
 WW 75  
 YW 136  
 CED 7.0  
 CEM 10.0  
 Milk 26  
 CW 48  
 MARB 0.19  
 REA 0.63  
 FAT -0.001

Always borrow money from a pessimist. He won't expect it back."



159J

Bull • HAMI 159J • January 25 2021 • #2207996

**HF ALCATRAZ 159J**

MAY-WAY BREAKOUT 1310  
**HF ALCATRAZ 60F**  
 HF MAYFLOWER 191Z

CONNEALY CONSENSUS 7229

**HF LUCY 122Z**

HF LUCY 12U

AVF BREAKOUT 5409  
 MAY-WAY LADY BANDO 086  
 HF TIGER 5T  
 HF MAYFLOWER 78P  
 CONNEALY CONSENSUS  
 BLUE LILLY OF CONANGA 16  
 HF KODIAK 5R  
 HF LUCY 132L

Act BW	98
Adj WW	831
Adj YW	1220
ADG	

EPD	BW	WW	YW	CED	CEM	Milk	CW	MARB	REA	FAT
	2.0	53	90	3.0	2.0	30	39	0.50	0.51	0.002



162J

Bull • HAMI 162J • January 26 2021 • #2224287

**HF ON DUTY 162J ET**

MAY-WAY BREAKOUT 1310  
**HF ALCATRAZ 60F**  
 HF MAYFLOWER 191Z

MCATL PURE PRODUCT 903-55

**HF TIBBIE 101Z**

HF TIBBIE 70X

AVF BREAKOUT 5409  
 MAY-WAY LADY BANDO 086  
 HF TIGER 5T  
 HF MAYFLOWER 78P  
 CONNEALY FINAL PRODUCT  
 M A ESTA 55-252  
 HF TIGER 5T  
 HF TIBBIE 91P

Act BW	70
Adj WW	710
Adj YW	1282
ADG	3.58



BW	0.7
WW	41
YW	83
CED	4.5
CEM	6.0
Milk	33
CW	43
MARB	0.49
REA	0.73
FAT	0.026



Dam, HF Tibbie 101Z



Maternal brother, HF Thumper 108E, sold to LLB Angus for \$22,000

On Duty is one of two flush brothers to sell in the sale out of the donor cow HF Tibbie 101Z. He is a very muscular, thick, square made calf. With a +0.8 birth weight this calf will be heifer bull rated and you can rest easy knowing it will be full of vigor once it hits the ground! His dam has been a long-time producer for us and has progeny to be proud of. Some include, HF Tibbie 211H, that sold as the pick of our heifer calves in the 2020 Angus Collection Sale. She was picked out of a group of 130 heifer calves by KT Ranches. HF Episode 209H, sold to Echo Sand Ranching for \$16,500. HF Thumper 108E, sold to LLB Angus for \$22,000.



# 164J

Bull • HAMI 164J • January 26 2021 • #2207999

## HF SUREFIRE 164J

SCHIEFELBEIN ATTRACTIVE 4565  
**SCHIEFELBEIN SHOWMAN 338**  
FROSTY ELBA 3745

JMB TRACTION 292  
FROSTY ANSWER 3979  
S A V RENOWN 3439  
FROSTY UPWARD 1100  
CHESTNUT POWER ONE 19  
CN BEAUTY 08  
HF SWAGGER 75W  
HF EVENING TINGE 55N

Act BW	98
Adj WW	785
Adj YW	1257
ADG	2.95

CN POWER ONE 102 DDF  
**HF EVENING TINGE 163B**  
HF EVENING TINGE 179Y

EPD	BW	WW	YW	CED	CEM	Milk	CW	MARB	REA	FAT
	4.1	72	131	0.0	4.0	24	47	0.52	0.64	-0.018



Dam, HF Mayflower 191Z



Maternal brother, HF Alcatraz 60F, sold 1/2 interest to Bar-E-L & Cow Trax Cattle Co. for \$200,000.



# 165J

Bull • HAMI 165J • January 26 2021 • #2224286

## HF SPITTIN' IMAGE 165J ET

SCHIEFELBEIN ATTRACTIVE 4565  
**SCHIEFELBEIN SHOWMAN 338**  
FROSTY ELBA 3745

JMB TRACTION 292  
FROSTY ANSWER 3979  
S A V RENOWN 3439  
FROSTY UPWARD 1100  
HF KODIAK 5R  
HF ECHO 84R  
HF JUSTICE 52L  
SCHELL'S MAYFLOWER 4F

Act BW	72
Adj WW	775
Adj YW	1247
ADG	2.95

HF TIGER 5T  
**HF MAYFLOWER 191Z**  
HF MAYFLOWER 78P

BW	-1.3
WW	69
YW	131
CED	9.5
CEM	9.5
Milk	27
CW	53
MARB	0.29
REA	0.91
FAT	-0.005



There are four flush brothers in this sale out of HF Mayflower 191Z by Showman and to say they are highly anticipated would be an understatement. After all the dust settles, these bulls will not be known as the high performance group, but they will potentially be the top female makers in the offering. Spittin' Image 165J will be a calving ease specialist that will leave you with calves that are square made, easy to look at, and built for the long haul. Flush brothers sell as lots 104J, 183J, 184J.

# 167J

Bull • HAMI 167J • January 26 2021 • #2208001

## HF SHOWMAN 167J

SCHIEFELBEIN ATTRACTIVE 4565  
**SCHIEFELBEIN SHOWMAN 338**  
FROSTY ELBA 3745

JMB TRACTION 292  
FROSTY ANSWER 3979  
S A V RENOWN 3439  
FROSTY UPWARD 1100  
S TITLST 1145  
HF TIBBIE 93U  
HF SWAGGER 75W  
WINDOVER BLACK LADY 37P

Act BW	75
Adj WW	791
Adj YW	1191
ADG	2.50

BAR-H CROSSFIRE 63A  
**HF BLACKLADY 62E**  
HF BLACKLADY 142Y

EPD	BW	WW	YW	CED	CEM	Milk	CW	MARB	REA	FAT
	-0.8	68	123	11.0	10.0	24	45	0.39	0.76	0.009





170J

Bull • HAMI 170J • January 27 2021 • #2224268

HF JOHNNY DRAMA 170J ET

SCHIEFELBEIN ATTRACTIVE 4565  
**SCHIEFELBEIN SHOWMAN 338**  
 FROSTY ELBA 3745

PLEASANT VALLEY LUTE 1207

HF TIBBIE 22C

HF TIBBIE 212X

JMB TRACTION 292  
 FROSTY ANSWER 3979  
 S A V RENOWN 3439  
 FROSTY UPWARD 1100  
 PLAINVIEW LUTTON E102  
 CHERRY KNOLL ELSA 8014

HF TIGER 5T

HF TIBBIE 96F

Act BW 86

Adj WW 728

Adj YW 1256

ADG 3.30

EPD	BW	WW	YW	CED	CEM	Milk	CW	MARB	REA	FAT
	3.4	72	127	3.5	7.0	25	45	0.26	0.65	-0.008



172J

Bull • HAMI 172J • January 27 2021 • #2208005

HF SPOTLIGHT 172J

SCHIEFELBEIN ATTRACTIVE 4565  
**SCHIEFELBEIN SHOWMAN 338**  
 FROSTY ELBA 3745

CONNEALY CONSENSUS 7229

HF TIBBIE 120A

HF TIBBIE 23Y

JMB TRACTION 292  
 FROSTY ANSWER 3979  
 S A V RENOWN 3439  
 FROSTY UPWARD 1100  
 CONNEALY CONSENSUS  
 BLUE LILLY OF CONANGA 16  
 HF KODIAK 5R  
 2HR TIBBIE 41P

Act BW 64

Adj WW 824

Adj YW 1357

ADG 3.33



BW -2.2  
 WW 65  
 YW 113  
 CED 14.0  
 CEM 13.0  
 Milk 25  
 CW 40  
 MARB 0.41  
 REA 0.69  
 FAT -0.015



Dam, HF Tibbie 120A



Maternal brother, HF Quittin' Time 31F, sold to Leedale Farming Company \$11,000

Highlight this herd bull prospect! It's really hard to find a fault in this guy. His wide base, big rib, and angus character shine through. He may be one of the highlights in terms of overall performance coupled with unparalleled calving ease. 64 pound birth weight, 824 pound weaning weight, and -2.1 on birth. His dam is loaded with muscle shape, spring of rib, and body mass in a beautiful feminine package. Maternal brothers have sold through past sales to John Watson \$11,500.00, Brian Kriz \$6000.00, A.S. Galten Farms \$9,500.00, and Leedale Farming \$11,000.00.



**176J** Bull • HAMI 176J • January 28 2021 • #2224264

**HF SHOWCASE 176J ET**

SCHIEFELBEIN ATTRACTIVE 4565  
**SCHIEFELBEIN SHOWMAN 338**  
 FROSTY ELBA 3745

JMB TRACTION 292  
 FROSTY ANSWER 3979  
 S A V RENOWN 3439  
 FROSTY UPWARD 1100  
 PLAINVIEW LUTTON E102  
 CHERRY KNOLL ELSA 8014  
 HF TIGER 5T  
 HF TIBBIE 96F

Act BW	86
Adj WW	827
Adj YW	1394
ADG	3.54

BW	2.8
WW	74
YW	129
CED	3.5
CEM	7.0
Milk	25
CW	45
MARB	0.26
REA	0.65
FAT	-0.08

PLEASANT VALLEY LUTE 1207  
**HF TIBBIE 22C**  
 HF TIBBIE 212X



Dam, HF Tibbie 22C, sold to Greenwood Cattle, \$22,000 for 1/2 interest



Full brother, Greenwood High Class 87H, sold to Nordal Limousin & Angus for \$54,000

This feature bull has been a favorite amongst many who have scouted the pens this fall. Moderate in terms of frame but that is where moderation stops. Showcase has expressive muscle shape through his rump and down his top. He has awesome spring of rib and a naturally proud presence. Showcase was selected to be part of our display at Agribition and came out on top of his very competitive class. His dam has been a genetic gem for Hamilton Farms and Greenwood Cattle having produced numerous top selling ET calves for both outfits. HF Tibbie 22C is now deceased but she will always be remembered for her stunning profile...deep, angular, and feminine, with a flawless udder. There are five full flush brothers in this sale, lots 170, 193, 216, and 220. Two maternal flush brothers as well, lots 244, and 268

**177J** Twin • Bull • HAMI 177J • January 28 2021 • #2208008

**HF STORM CENTER 177J**

MUSGRAVE BIG SKY  
**HF STORM CENTER 26D**  
 HF MISS BLACKCAP 296Y

CONNEALY EARNAN 076E  
 SAV PRIMROSE 7861  
 HF TIGER 5T  
 HF MISS BLACKCAP 27R  
 MCATL REFLECTION 120-577  
 SOO LINE DANA 9028  
 HF TIGER 5T  
 HF ROSEBUD 70H

Act BW	70
Adj WW	701
Adj YW	1107
ADG	2.53



LLB REFLECTION 607A  
**HF ROSEBUD 259C**  
 HF ROSEBUD 217Z

EPD	BW	WW	YW	CED	CEM	Milk	CW	MARB	REA	FAT
	1.4	51	92	7.0	11.0	29	35	0.32	0.50	0.014



I don't want any yes-men around me. I want everybody to tell me the truth even if it costs them their job.



**178J** Twin • Bull • HAMI 178J • January 28 2021 • #2208009

**HF STORM CENTER 178J**

MUSGRAVE BIG SKY  
**HF STORM CENTER 26D**  
 HF MISS BLACKCAP 296Y

LLB REFLECTION 607A  
**HF ROSEBUD 259C**  
 HF ROSEBUD 217Z

CONNELLY EARNAN 076E  
 SAV PRIMROSE 7861  
 HF TIGER 5T  
 HF MISS BLACKCAP 27R  
 MCATL REFLECTION 120-577  
 SOO LINE DANA 9028  
 HF TIGER 5T  
 HF ROSEBUD 70H

Act BW	60
Adj WW	565
Adj YW	1059
ADG	3.09



Act BW	WW	YW	CED	CEM	Milk	CW	MARB	REA	FAT
1.4	51	92	7.0	11.0	29	35	0.32	0.50	0.014



**179J** Bull • HAMI 179J • January 28 2021 • #2233487

**HF SOLD OUT 179J ET**

SCHIEFELBEIN ATTRACTIVE 4565  
**SCHIEFELBEIN SHOWMAN 338**  
 FROSTY ELBA 3745

HF TIGER 5T  
**HF ROSEBUD 246Z**  
 HF ROSEBUD 94P

JMB TRACTION 292  
 FROSTY ANSWER 3979  
 S A V RENOWN 3439  
 FROSTY UPWARD 1100  
 HF KODIAK 5R  
 HF ECHO 84R  
 HF PROGRESS 20K  
 HF ROSEBUD 198M

Act BW	90
Adj WW	893
Adj YW	1515
ADG	3.89

BW	1.3
WW	84
YW	156
CED	11.5
CEM	10.0
Milk	27
CW	55
MARB	0.48
REA	0.57
FAT	-0.017



Maternal brother, HF Thrive 128D, sold to Alta Genetics for \$35,000



Maternal brother, HF Lawless 203H, sold to East & West Ranching for \$14,000

This power bull weaned off his recipient mother just shy of 900 pounds during our drought filled summer and topped that off with a impressive 1515 pound adjusted yearling weight. The length of body that Sold Out exhibits is 2nd to none, and you'll admire him all day long for his herd bull characteristics. As mentioned in his flush brother 141J's footnotes... When you dig up sale results of past progeny from Rosebud 246Z, the list is long. A quick overview of the dynamic operations which have acquired her genetics are Box Elder Farming, Alta Genetics, T&B Harty, Semex, East & West Ranching, Bull Pound Ranch, Foster Cattle LLC, Bar-E-L Angus, Oliver Schunicht, Tafika Angus, Rio Grande Angus, and many more. HF Sold Out 179J was a team member of our display at Agribition last fall.

**180J**

Bull • HAMI 180J • January 28 2021 • #2208010

**HF SHOWMAN 180J**

SCHIEFELBEIN ATTRACTIVE 4565  
**SCHIEFELBEIN SHOWMAN 338**  
 FROSTY ELBA 3745

HF SWAGGER 75W  
**HF ERICA 159Y**  
 HF ERICA 186U

JMB TRACTION 292  
 FROSTY ANSWER 3979  
 S A V RENOWN 3439  
 FROSTY UPWARD 1100  
 HF TIGER 5T  
 HF MISS BLACKCAP 27R  
 HF KODIAK 5R  
 HF ERICA 17P

Act BW	90
Adj WW	777
Adj YW	1382
ADG	3.78

EPD	BW	WW	YW	CED	CEM	Milk	CW	MARB	REA	FAT
	2.6	66	120	3.0	8.0	20	39	0.35	0.70	-0.011



Maternal brother, HF Tomahawk 229E, sold to Mar Mac Farms for \$17,000



Dam, HF Mayflower 191Z

**183J**

Bull • HAMI 183J • January 29 2021 • #2224256

**HF CELEBRITY 183J ET**

SCHIEFELBEIN ATTRACTIVE 4565  
**SCHIEFELBEIN SHOWMAN 338**  
 FROSTY ELBA 3745

HF TIGER 5T  
**HF MAYFLOWER 191Z**  
 HF MAYFLOWER 78P

JMB TRACTION 292  
 FROSTY ANSWER 3979  
 S A V RENOWN 3439  
 FROSTY UPWARD 1100  
 HF KODIAK 5R  
 HF ECHO 84R  
 HF JUSTICE 52L  
 SCHELL'S MAYFLOWER 4F

Act BW	65
Adj WW	811
Adj YW	1372
ADG	3.51



BW	-2.5
WW	65
YW	124
CED	9.5
CEM	9.5
Milk	27
CW	53
MARB	0.29
REA	0.91
FAT	-0.005

There is tremendous calving ease bred into these Showman x 191Z bulls, but they offer so much more than that. These flush brothers will be superior cow makers that will add longevity and completeness to their progeny. Celebrity had a respectable 811 weaning weight to go along with his -2.5 birth EPD. Flush brothers sell as lots 184J, 165J, 104J.

It's true hard work never killed anybody, but I figure, why take the chance?

HAMILTON FARMS

2022 SALE BULLS



**184J**

Bull • HAMI 184J • January 29 2021 • #2224257

**HF UPHEAVAL 184J ET**

SCHIEFELBEIN ATTRACTIVE 4565  
**SCHIEFELBEIN SHOWMAN 338**  
 FROSTY ELBA 3745

HF TIGER 5T

**HF MAYFLOWER 191Z**  
 HF MAYFLOWER 78P

JMB TRACTION 292  
 FROSTY ANSWER 3979  
 S A V RENOWN 3439  
 FROSTY UPWARD 1100  
 HF KODIAK 5R  
 HF ECHO 84R  
 HF JUSTICE 52L  
 SCHELL'S MAYFLOWER 4F

Act BW	70
Adj WW	709
Adj YW	1259
ADG	3.44



BW	-2.2
WW	57
YW	113
CED	9.5
CEM	9.5
Milk	27
CW	53
MARB	0.29
REA	0.91
FAT	-0.005



Maternal grand sire, HF Tiger 5T



Sire, Schiefelbein Showman 338

Another dandy from HF Mayflower 191Z. Tremendous muscle shape, spring of rib, big topped, and style to burn. Sleep tight and let the heifers do their job! Flush brothers sell as lots 183J, 165J, 104J.



**186J**

Twin • Bull • WACE 186J • January 29 2021 • #2208013

**HF ROCK STAR 186J**

SCHIEFELBEIN ATTRACTIVE 4565  
**SCHIEFELBEIN SHOWMAN 338**  
 FROSTY ELBA 3745

MAY-WAY BREAKOUT 1310

**HF MISTRESS 202E**  
 HF MISTRESS 196Z

JMB TRACTION 292  
 FROSTY ANSWER 3979  
 S A V RENOWN 3439  
 FROSTY UPWARD 1100  
 AVF BREAKOUT 5409  
 MAY-WAY LADY BANDO 086  
 HF KODIAK 5R  
 HF MISTRESS 6M

Act BW	70
Adj WW	761
Adj YW	1372
ADG	3.82




EPD	BW	WW	YW	CED	CEM	Milk	CW	MARB	REA	FAT
	2.0	76	135	4.0	8.5	29	53	0.36	0.62	0.007

**187J**

Bull • HAMI 187J • January 29 2021 • #2208014

**HF EXTRIGATE 187J**

KOUPAL KOZI 418	KOUPAL KOZI 22	Act BW 75
<b>HF RESCUE 89G</b>	KOUPAL EBONETTE 263	Adj WW 839
HF MAYFLOWER 17X	HF TIGER 5T AMF	Adj YW 1378
MUSGRAVE 316 STUNNER	HF MAYFLOWER 67U	ADG 3.37
<b>HF TIBBIE 140G</b>	LD CAPITALIST 316	
HF TIBBIE 258W	MCATL BLACKBIRD 831-1378	
	DUFF ENCORE 702	
	HF TIBBIE 153R	

EPD	BW	WW	YW	CED	CEM	Milk	CW	MARB	REA	FAT
	0.0	64	109	10.0	7.0	28	39	0.45	0.33	0.034

**189J**

Bull • HAMI 189J • January 29 2021 • #2208015

**HF PERSPECTIVE 189J**


SITZ STELLAR 726D	MOHNEN SUBSTANTIAL 272	Act BW 87
<b>SITZ PROFOUND 680G</b>	SITZ PRIDE 200B OSF	Adj WW 826
SITZ EPPONIA 223C	SITZ UPWARD 9873	Adj YW 1381
KR BULLSEYE 345I	SITZ EPPONIA 31Z	ADG 3.47
<b>HF QUEEN 106C</b>	MOGCK BULLSEYE	
HF QUEEN 268W	WK QUEEN 1540	
	HF TIGER 5T	
	HF QUEEN 107S	

EPD	BW	WW	YW	CED	CEM	Milk	CW	MARB	REA	FAT
	2.3	64	120	2.0	6.0	26	44	0.45	0.44	0.020

**191J**

Bull • HAMI 191J • January 30 2021 • #2208016

**HF SHOWMAN 191J**


SCHIEFELBEIN ATTRACTIVE 4565	JMB TRACTION 292	Act BW 75
<b>SCHIEFELBEIN SHOWMAN 338</b>	FROSTY ANSWER 3979	Adj WW 659
FROSTY ELBA 3745	S A V RENOWN 3439	Adj YW 1209
BARTELS ELEMENT 1028 65I	FROSTY UPWARD 1100	ADG 3.44
<b>HF LUCY 285F</b>	POSS ELEMENT 215	
HF LUCY 159D	BLACK LOU 6040 1028 BARTELS	
	PLEASANT VALLEY LUTE 1207	
	HF LUCY 122Z	

EPD	BW	WW	YW	CED	CEM	Milk	CW	MARB	REA	FAT
	0.7	59	108	8.0	12.0	22	51	0.31	0.81	-0.016

**192J**

Bull • HAMI 192J • January 30 2021 • #2208017

**HF SHOWMAN 192J**

SCHIEFELBEIN ATTRACTIVE 4565	JMB TRACTION 292	Act BW 75
<b>SCHIEFELBEIN SHOWMAN 338</b>	FROSTY ANSWER 3979	Adj WW 756
FROSTY ELBA 3745	S A V RENOWN 3439	Adj YW 1247
SANDY BAR IDEAL 18S	FROSTY UPWARD 1100	ADG 3.07
<b>HF ELSIEMERE 106W</b>	PRAIRIELANE IDEAL 7451-2014	
HF ELSIEMERE 65T	SANDY BAR PRIDE 89L	
	HF DONE RIGHT 125R	
	HF ELSIEMERE 14R	

EPD	BW	WW	YW	CED	CEM	Milk	CW	MARB	REA	FAT
	-0.8	54	96	9.0	10.0	27	36	0.17	0.58	-0.001





**193J**

Bull • HAMI 193J • January 30 2021 • #2224235

**HF RICHTER SCALE 193J ET**

SCHIEFELBEIN ATTRACTIVE 4565  
**SCHIEFELBEIN SHOWMAN 338**  
 FROSTY ELBA 3745

PLEASANT VALLEY LUTE 1207  
**HF TIBBIE 22C**  
 HF TIBBIE 212X

JMB TRACTION 292  
 FROSTY ANSWER 3979  
 S A V RENOWN 3439  
 FROSTY UPWARD 1100  
 PLAINVIEW LUTTON E102  
 CHERRY KNOLL ELSA 8014  
 HF TIGER 5T  
 HF TIBBIE 96F

Act BW 85

Adj WW 743

Adj YW 1287

ADG 3.40

BW 2.8  
 WW 71  
 YW 125  
 CED 3.5  
 CEM 7.0  
 Milk 25  
 CW 45  
 MARB 0.26  
 REA 0.65  
 FAT -0.008



Dam, HF Tibbie 22C



Full sister, Greenwood Tibbie 85H, sold in 2020 Angus Collection for \$25,500

You couldn't draw one any better than Richter Scale. Made right starting from the ground up and stacked with maternal greatness. His mother was a beautifully made, model Angus cow who has produced some big time progeny for Hamilton Farms and Greenwood Cattle. Full sibs to Richter Scale were sold by Greenwood Cattle in 2021. A full brother went to Nordal Limousin & Angus for \$54,000.00, a full sister sold through the Angus Collection sale for \$25,000.00. Match Richter Scale's pedigree and good looks with a very balanced set of numbers and the package is complete. Flush brothers sell as lots 170J, 176J, 216J, 220J.



**195J**

Bull • HAMI 195J • January 30 2021 • #2227425

**HF ABSOLUTE 195J**

HF SYNDICATE 213Z  
**HF INTERVENTION 65G**  
 HF TIBBIE 239E

NORTH CAMP SILVER STAR 5103  
**HF LUCY 113G**  
 HF LUCY 47D

CONNELLY CONSENSUS 7229  
 HF MISS BLACKCAP 27R  
 HF G-MAN 29B  
 HF TIBBIE 192X  
 R B ACTIVE DUTY 0010X  
 MALSONS JILT 13Z  
 BSF HOT LOTTO 1401  
 HF LUCY 167A

Act BW 79  
 Adj WW 730  
 Adj YW 1258  
 ADG 3.30

EPD	BW	WW	YW	CED	CEM	Milk	CW	MARB	REA	FAT
	3.1	62	114	3.0	7.0	23	59	0.44	0.66	-0.007



**198J**

Bull • HAMI 198J • January 31 2021 • #2208020

**HF JOKER'S WILD 198J**

SCHIEFELBEIN ATTRACTIVE 4565  
**SCHIEFELBEIN SHOWMAN 338**  
 FROSTY ELBA 3745

HF TIGER 5T  
**HF TIBBIE 145A**  
 HF TIBBIE 103T

JMB TRACTION 292  
 FROSTY ANSWER 3979  
 S A V RENOWN 3439  
 FROSTY UPWARD 1100  
 HF KODIAK 5R  
 HF ECHO 84R  
 HF DONE RIGHT 125R  
 HF TIBBIE 62R

Act BW 89  
 Adj WW 833  
 Adj YW 1394  
 ADG 3.51

EPD	BW	WW	YW	CED	CEM	Milk	CW	MARB	REA	FAT
	1.3	70	128	7.0	7.0	28	47	0.19	0.71	-0.009





Maternal Grandsire, HF Storm Center 26D



Paternal grand dam, Frosty Elba 3745

Another Showman son that comes with a pretty full check list. The consistency of quality bulls in this year's line up is impressive, and when you can get this many half brothers with this amount of good in them, descriptive footnotes become so repetitive! Having said that, Bootcamp is another one of many who possesses the body mass, muscle mass, and structural correctness that we are all looking for. He will provide ample performance to press down on the scales at weaning without forgoing calving ease. A maternal sister to HF Bootcamp 200J has calved this spring and she is the type that you would like a bunch of.



**200J**

Bull • HAMI 200J • January 31 2021 • #2208022

**HF BOOTCAMP 200J**

SCHIEFELBEIN ATTRACTIVE 4565  
**SCHIEFELBEIN SHOWMAN 338**  
 FROSTY ELBA 3745

HF STORM CENTER 26D

**HF TIBBIE 67F**

HF TIBBIE 312W

JMB TRACTION 292  
 FROSTY ANSWER 3979  
 S A V RENOWN 3439  
 FROSTY UPWARD 1100  
 MUSGRAVE BIG SKY  
 HF MISS BLACKCAP 296Y  
 DUFF ENCORE 702  
 HF TIBBIE 230T

Ad BW	83
Adj WW	774
Adj YW	1341
ADG	3.54



BW	1.8
WW	65
YW	123
CED	5.0
CEM	7.0
Milk	24
CW	47
MARB	0.16
REA	0.69
FAT	0.006

*Thank You* to Mountain Toys for co-sponsoring our sale-day shuttle services!



Serving Cochrane and surrounding areas for over 25 years, Mountain Toys offers the highest quality products and service for all your outdoor needs. Our Master Certified technicians are here to keep your toys and workhorses safe and operational. We pride ourselves with going the extra mile and focus on the friendly small town service that will put a smile on your face.



Mountain Toys is proud to announce our newest member of the family....



403.932.4828 • 251 River Ave., Cochrane, AB • www.mountaintoypolaris.com

**POLARIS**



**Farm King**

**WALLENSTEIN**

**TRAM SALES LTD.**

**TUBE-LINE**  
MANUFACTURING LTD.

**MK MARTIN**  
INTERNATIONAL LTD.





**203J** Bull • HAMI 203J • January 31 2021 • #2208025

**HF COMMOTION 203J**

SCHIEFELBEIN ATTRACTIVE 4565	JMB TRACTION 292	Act BW 83
<b>SCHIEFELBEIN SHOWMAN 338</b>	FROSTY ANSWER 3979	
FROSTY ELBA 3745	S A V RENOWN 3439	Adj WW 835
	FROSTY UPWARD 1100	Adj YW 1551
HF TIGER 5T	HF KODIAK 5R	ADG 4.48
<b>HF TIBBIE 137X</b>	HF ECHO 84R	
2HR TIBBIE 209R	SITZ ALLIANCE 6595	
	HF TIBBIE 109L	

BW	0.5
WW	67
YW	125
CED	7.0
CEM	9.0
Milk	26
CW	46
MARB	0.28
REA	0.60
FAT	0.005



Dam, HF Tibbie 137X

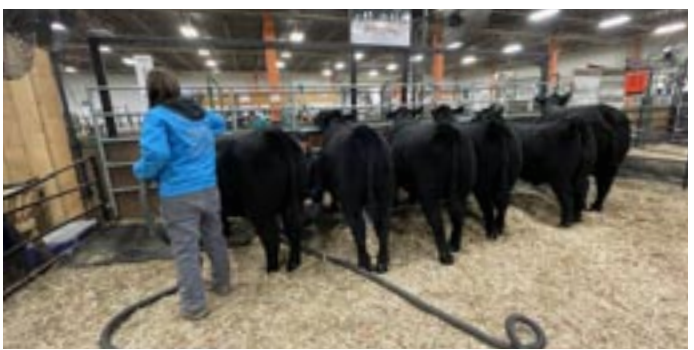


Maternal brother, HF Hot Ticket 38E, sold to Northway Cattle Company for \$19,000

This heavy weight is impressive by design. His mother is a tank, his dad is a truck, and Commotion is somewhere in between! If you want them as wide and thick as you can find them, this bull is for you. Born just 83 pounds, weaned off at 835 pounds, and weighing in at a year old with an impressive 1551 pound weight. Commotion holds the heaviest yearling weight in the offering and the highest ADG of 4.48 and a ratio of 124. What a bonus here when you can turn him out with your heifers for the first year if you so desire. His dam is what you might rank as an ideal cow. Phenotypically flawless, with impeccable feet and udder, and to top it off, she is a Tiger daughter!



Gail showing in Regina, HF Rip 17J



Agribition crew, hard at work... as per usual!



Maternal grand sire, HF On The Money 150C, sold to Cow Trax Cattle Co. for \$30,000



Maternal brother, HF Anchorman 70E, sold to Heinz Cattle Company for \$11,500

This calf is here to make a statement! A February born calf, off a first calf heifer, and he weaned of his mother at 844lbs! Statement has lots of hair, a good foot and leg structure, and he is sure to possess all the strong qualities of his sire. When you look at his numbers you will find a nice balance across the board and above breed average in qualities like Weaning, Yearling, Scrotal, Claw, Angle, and Carcass traits! Those are some of the building blocks that should check your boxes. Statement's grand dam is a powerful cow that raised an impressive bull calf, HF Anchorman 70E, selling to Heinz Cattle Company for \$11,500.



## 205J

Bull • HAMI 205J • February 01 2021 • #2208026

### HF STATEMENT 205J

SITZ STELLAR 726D  
**SITZ PROFOUND 680G**  
SITZ EPPONIA 223C

HF ON THE MONEY 150C  
**HF BLACKBIRD 150G**  
HF BLACKBIRD 56B

MOHNEN SUBSTANTIAL 272  
SITZ PRIDE 200B OSF  
SITZ UPWARD 9873  
SITZ EPPONIA 31Z  
KR BULLSEYE 3451  
HF BLOSSOM 5W  
J SQUARE S FIREMAN 14Y  
HF BLACKBIRD 25Y

Act BW	85
Adj WW	844
Adj YW	1333
ADG	3.06

BW	3.1
WW	67
YW	125
CED	1.0
CEM	3.0
Milk	29
CW	51
MARB	0.66
REA	0.52
FAT	0.028

## 207J

Bull • HAMI 207J • February 01 2021 • #2208027

### HF ESCAPE ARTIST 207J

MAY-WAY BREAKOUT 1310  
**HF ALCATRAZ 60F**  
HF MAYFLOWER 191Z

HF REBEL 53Y  
**HF TIBBIE 132B**  
HF TIBBIE 258W

AVF BREAKOUT 5409  
MAY-WAY LADY BANDO 086  
HF TIGER 5T  
HF MAYFLOWER 78P  
HF TIGER 5T  
HF TIBBIE 103T  
DUFF ENCORE 702  
HF TIBBIE 153R

Act BW	80
Adj WW	770
Adj YW	1215
ADG	2.78



EPD	BW	WW	YW	CED	CEM	Milk	CW	MARB	REA	FAT
	1.1	46	79	7.0	7.0	31	29	0.50	0.45	0.039



## 211J

Bull • HAMI 211J • February 02 2021 • #2208030

### HF LEADER 211J

SCHIEFELBEIN ATTRACTIVE 4565  
**SCHIEFELBEIN SHOWMAN 338**  
FROSTY ELBA 3745

BARTELS ELEMENT 1028 651  
**HF TIBBIE 245F**  
HF TIBBIE 188C

JMB TRACTION 292  
FROSTY ANSWER 3979  
S A V RENOWN 3439  
FROSTY UPWARD 1100  
POSS ELEMENT 215  
BLACK LOU 6040 1028 BARTELS  
HF SYNDICATE 213Z  
HF TIBBIE 179W

Act BW	83
Adj WW	796
Adj YW	1290
ADG	3.09



EPD	BW	WW	YW	CED	CEM	Milk	CW	MARB	REA	FAT
	1.8	73	135	5.0	9.0	25	55	0.33	0.78	-0.023



Have you ever noticed that anybody driving faster than you is a maniac, and anyone going slower than you is a moron?



**212J** Bull • HAMI 212J • February 02 2021 • #2208031

**HF IMPACT 212J**

- SCHIEFELBEIN ATTRACTIVE 4565
- SCHIEFELBEIN SHOWMAN 338**
- FROSTY ELBA 3745
- PLEASANT VALLEY LUTE 1207
- HF LUCY 159D**
- HF LUCY 122Z
- JMB TRACTION 292
- FROSTY ANSWER 3979
- S A V RENOWN 3439
- FROSTY UPWARD 1100
- PLAINVIEW LUTTON E102
- CHERRY KNOLL ELSA 8014
- CONNELLY CONSENSUS 7229
- HF LUCY 12U

Act BW	81
Adj WW	805
Adj YW	1310
ADG	3.16



BW	1.8
WW	68
YW	118
CED	5.0
CEM	8.0
Milk	21
CW	49
MARB	0.28
REA	0.76
FAT	-0.014



Dam, HF Lucy 159D



Full brother, HF Admission 122H, sold to Oliver Schunicht for \$9,500

Oliver Schunicht purchased a full brother to HF Impact 212J through our 2021 sale for \$9500.00. Impact's dam is a big bodied, easy fleshing matron with outstanding udder confirmation and sound structure. Heifer approved and performance to boot.



**213J** Bull • HAMI 213J • February 02 2021 • #2208032

**HF ELEMENT 213J**

- POSS ELEMENT 215
- BARTELS ELEMENT 1028 651**
- BLACK LOU 6040 1028 BARTELS
- J SQUARE S FIREMAN 14Y
- HF ROSEBUD 282B**
- HF ROSEBUD 333X
- POSS EASY IMPACT 0119
- POSS ERICA 004
- CONNELLY REFLECTION
- MS MCK BLACK ALLIANCE 6040
- MJ ESCALADE 2W
- BROOKMORE ENCHANTRESS 229S
- HF KODIAK 5R
- HF ROSEBUD 94P

Act BW	70
Adj WW	753
Adj YW	1181
ADG	2.67

EPD	BW	WW	YW	CED	CEM	Milk	CW	MARB	REA	FAT
	-0.1	51	85	10.0	13.0	22	37	0.46	0.44	0.013



Maternal grandsire, HF Tiger 5T



Maternal brother, HF Crack The Gate 25H, sold to Circle G Simmental & Angus \$11,000

**214J** Bull • HAMI 214J • February 02 2021 • #2208033

**HF STORM CENTER 214J**

MUSGRAVE BIG SKY  
**HF STORM CENTER 26D**  
HF MISS BLACKCAP 296Y

HF TIGER 5T  
**HF BLACKWOOD LADY 221C**  
HF BLACKWOOD LADY 306W

CONNELLY EARNAN 076E  
SAV PRIMROSE 7861  
HF TIGER 5T  
HF MISS BLACKCAP 27R  
HF KODIAK 5R  
HF ECHO 84R  
DUFF ENCORE 702  
HF BLACKWOOD LADY 85G

Act BW 76  
Adj WW 727  
Adj YW 1199  
ADG 2.95



BW 0.0  
WW 41  
YW 77  
CED 11.0  
CEM 9.0  
Milk 24  
CW 30  
MARB 0.32  
REA 0.44  
FAT 0.012

A calving ease specialist that will leave you with a truck load of replacement females you won't want to part with. Storm Center 214J is a bull that you'll have a tough time finding blemishes in. Longevity comes to mind when you analyze this guy, and if you look up his mother, you'll feel the same way. Blackwood Lady 221C is a great looking Tiger daughter with sound structure and a beautiful udder. We hold our Storm Center daughters with high regard for their soundness and maternal excellence. A maternal brother to Storm Center 214J sold in last year's sale to Circle G Simmental & Angus for \$11,000.00. Other maternal sibs have sold to Klassen Bros. for \$5500.00 and Heinz Cattle Co. for \$5500.00

*Thank You*

to Core Ag Inputs for co-sponsoring our sale hospitality. It is greatly appreciated!



**216J** Bull • HAMI 216J • February 03 2021 • #2224203

**HF PRESTIGE 216J ET**

SCHIEFELBEIN ATTRACTIVE 4565  
**SCHIEFELBEIN SHOWMAN 338**  
 FROSTY ELBA 3745

PLEASANT VALLEY LUTE 1207  
**HF TIBBIE 22C**  
 HF TIBBIE 212X

JMB TRACTION 292  
 FROSTY ANSWER 3979  
 S A V RENOWN 3439  
 FROSTY UPWARD 1100  
 PLAINVIEW LUTTON E102  
 CHERRY KNOLL ELSA 8014  
 HF TIGER 5T  
 HF TIBBIE 96F

Act BW	86
Adj WW	793
Adj YW	1337
ADG	3.40

BW	2.9
WW	72
YW	126
CED	3.5
CEM	7.0
Milk	25
CW	45
MARB	0.26
REA	0.65
FAT	-0.008



Dam, HF Tibbie 22C



Maternal grand sire, Pleasant Valley Lute 1207

Yet another flush brother from HF Tibbie 22C. Reflecting back when 22C was a calf, the image of her is embedded in my mind as if it were yesterday. When Jayden and Jaxon Payne called looking to purchase a special female to build their Angus program, Tibbie 22C was our first choice. We didn't want to part with 100% of her, but we did come to terms on selling half of her. Jayden and Jaxon took her home and raised and developed her into a beautiful Angus female that any breeder would love to have. As the breeders of Tibbie, we couldn't have been more proud to see the success she created for the young Payne entrepreneurs at Greenwood. When it comes to analysing pedigrees, remember this...more times than not, success breeds success. Flush brothers sell as lots 170J, 193J, 176J, 220J.



Cole, Joel, & Chance making quick work of clipping bulls!



Maternal brother, HF Silver Star 200G, sold to Szybunka Farms for \$8,500



Maternal grand sire, WK Smooth 2382

## 218J

Bull • HAMI 218J • February 03 2021 • #2208035

### HF HISTORIAN 218J

SCHIEFELBEIN ATTRACTIVE 4565  
**SCHIEFELBEIN SHOWMAN 338**  
FROSTY ELBA 3745

WK SMOOTH 2382 DDF  
**HF RUBY 194C**  
HF RUBY 62U

JMB TRACTION 292  
FROSTY ANSWER 3979  
S A V RENOWN 3439  
FROSTY UPWARD 1100  
SYDGEN DOC 9017  
THOENE IN FOCUS 763  
HF FREE WHEELER 191N  
WILBAR RUBY 955N

Act BW	88
Adj WW	740
Adj YW	1368
ADG	3.92

BW	2.3
WW	64
YW	122
CED	5.0
CEM	8.0
Milk	22
CW	54
MARB	0.28
REA	0.75
FAT	-0.025

Cookie cutter quality in large volume would best describe the Showman progeny on offer. Historian descends from the famous Ruby cow family that is so well known for producing the breed legend, HF Kodiak 5R. In fact, Wilbar Ruby 955N is on the bottom line of Historians pedigree as his maternal great grandmother... just a little history on Historian. Look him up, you'll like him.

## 220J

Bull • HAMI 220J • February 04 2021 • #2224296

### HF JAW DROPPER 220J ET

SCHIEFELBEIN ATTRACTIVE 4565  
**SCHIEFELBEIN SHOWMAN 338**  
FROSTY ELBA 3745

PLEASANT VALLEY LUTE 1207  
**HF TIBBIE 22C**  
HF TIBBIE 212X

JMB TRACTION 292  
FROSTY ANSWER 3979  
S A V RENOWN 3439  
FROSTY UPWARD 1100  
PLAINVIEW LUTTON E102  
CHERRY KNOLL ELSA 8014  
HF TIGER 5T  
HF TIBBIE 96F

Act BW	87
Adj WW	733
Adj YW	1233
ADG	3.13

EPD	BW	WW	YW	CED	CEM	Milk	CW	MARB	REA	FAT
	3.7	72	127	3.5	7.0	25	45	0.26	0.65	-0.008





**222J** Bull • HAMI 222J • February 05 2021 • #2208038

**HF SHOWMAN 222J**

SCHIEFELBEIN ATTRACTIVE 4565		JMB TRACTION 292	Act BW	83						
<b>SCHIEFELBEIN SHOWMAN 338</b>		FROSTY ANSWER 3979	Adj WW	775						
FROSTY ELBA 3745		S A V RENOWN 3439	Adj YW	1325						
BAR DOUBLE M THUNDER 14C		FROSTY UPWARD 1100	ADG	3.44						
<b>EASTONDALE BLACKBIRD 15'18</b>		BAR DOUBLE M THUNDER 67A								
EASTONDALE BLACKBIRD 85'12		BAR DOUBLE M ANNABELLA 38Z								
		BAD LANDS INITIATIVE 375X								
		EASTONDALE BLACKBIRD 110'06								
EPD	BW	WW	YW	CED	CEM	Milk	CW	MARB	REA	FAT
	1.8	67	124	4.0	9.0	23	48	0.32	0.61	0.009



**223J** Bull • WACE 223J • February 05 2021 • #2208039

**HF SHOWMAN 223J**

SCHIEFELBEIN ATTRACTIVE 4565		JMB TRACTION 292	Act BW	78						
<b>SCHIEFELBEIN SHOWMAN 338</b>		FROSTY ANSWER 3979	Adj WW	806						
FROSTY ELBA 3745		S A V RENOWN 3439	Adj YW	1334						
NORTH CAMP SILVER STAR 5103		FROSTY UPWARD 1100	ADG	3.30						
<b>HF MISTRESS 27G</b>		R B ACTIVE DUTY 0010X								
HF MISTRESS 11A		MALSONS JILT 13Z								
		CONNELLY CONSENSUS 7229								
		HF MISTRESS 98Y								
EPD	BW	WW	YW	CED	CEM	Milk	CW	MARB	REA	FAT
	0.5	71	128	8.0	9.0	27	50	0.47	0.62	0.021

*In Tribute...*

**Fredrick Wayne Taylor**  
Dec. 10, 1952 – Dec. 25, 2021

Fred Taylor was one of those special individuals who left an impact on just about every person he ever met. He was an honorable man, characterized by his integrity, caring demeanor, and faithful friendship towards every person he crossed paths with. Fred was very well known in many different circles, but especially the livestock industry. He was a great ambassador for the beef industry, and had a long career with the Canadian Beef Grading Agency. Fred also had a special talent when it came to meat preparation. We were very honoured to have Fred preparing his famous smoked prime rib for our annual sales for over 20 years. We always wanted the very best dining experience for our customers, and Fred and Connie Taylor provided the best of the best! Fred will be greatly missed by all...but never forgotten.







Dam, HF Tibbie 73D



Full brother, HF Portrayal 67H, sold to Bar-E-L Angus & South View Ranch \$43,000

**226J**

Bull • HAMI 226J • February 07 2021 • #2208042

**HF SHOW BIZ 226J**

SCHIEFELBEIN ATTRACTIVE 4565  
**SCHIEFELBEIN SHOWMAN 338**  
FROSTY ELBA 3745

HF DEFENDER 146B  
**HF TIBBIE 73D**  
HF TIBBIE 263Y

JMB TRACTION 292  
FROSTY ANSWER 3979  
S A V RENOWN 3439  
FROSTY UPWARD 1100  
HF REBEL 53Y  
HF LUCY 258U  
CONNEALY CONSENSUS 7229  
HF TIBBIE 43R

Act BW	87
Adj VVW	876
Adj YW	1532
ADG	4.10

BW	1.6
WW	74
YW	130
CED	4.0
CEM	7.0
Milk	29
CW	46
MARB	0.43
REA	0.73
FAT	-0.007

Presenting to you the second highest performing bull in the sale for weaning and yearling weight. Show Biz recorded a 876 pound weaning weight, along with a 1532 pound adjusted yearling weight. This guy is round and sound, reads great on paper with nicely balanced traits, and just so happens to have a mother that has done all of this before...just last year! A full brother to Show Biz, HF Portrayal 67H, sold through last year's sale to Bar-E-L Angus for \$43,000.00. Show Biz has big shoes to fill but one thing is for certain...there won't be too much guess work on how he performs.



The mild fall weather made time for more projects & pen upgrades!



**239J** Bull • HAMI 239J • February 10 2021 • #2224239

**HF PROFOUND 239J ET**

SITZ STELLAR 726D	MOHNEN SUBSTANTIAL 272	Act BW	85							
<b>SITZ PROFOUND 680G</b>	SITZ PRIDE 2008 OSF	Adj WW	786							
SITZ EPPONIA 223C	SITZ UPWARD 9873	Adj YW	1231							
HF TIGER 5T	SITZ EPPONIA 31Z	ADG	2.78							
<b>HF TIBBIE 27A</b>	HF KODIAK 5R									
HF TIBBIE 258W	HF ECHO 84R									
	DUFF ENCORE 70Z									
	HF TIBBIE 153R									
EPD	BW	WW	YW	CED	CEM	Milk	CW	MARB	REA	FAT
	2.1	58	112	4.5	6.0	28	46	0.51	0.45	0.028



**243J** Bull • HAMI 243J • February 11 2021 • #2208056

**HF SHOWMAN 243J**

SCHIEFELBEIN ATTRACTIVE 4565	JMB TRACTION 29Z	Act BW	84							
<b>SCHIEFELBEIN SHOWMAN 338</b>	FROSTY ANSWER 3979	Adj WW	730							
FROSTY ELBA 3745	S A V RENOWN 3439	Adj YW	1303							
HA COWBOY UP 5405	FROSTY UPWARD 1100	ADG	3.58							
<b>HF ROSEBUD 301F</b>	HA OUTSIDE 3008									
HF ROSEBUD 246Z	HA BLACKCAP LADY 160Z									
	HF TIGER 5T AMF									
	HF ROSEBUD 94P									
EPD	BW	WW	YW	CED	CEM	Milk	CW	MARB	REA	FAT
	0.9	67	130	11.0	11.0	22	49	0.48	0.63	-0.028



**244J** Bull • HAMI 244J • February 11 2021 • #2224305

**HF HOT PISTOL 244J ET**

HA COWBOY UP 5405	HA OUTSIDE 3008	Act BW	86							
<b>HF ROPER 27F</b>	HA BLACKCAP LADY 160Z	Adj WW	785							
HF ROSEBUD 246Z	HF TIGER 5T	Adj YW	1262							
PLEASANT VALLEY LUTE 1207	HF ROSEBUD 94P	ADG	2.99							
<b>HF TIBBIE 22C</b>	PLAINVIEW LUTTON E10Z									
HF TIBBIE 212X	CHERRY KNOLL ELSA 8014									
	HF TIGER 5T									
	HF TIBBIE 96F									
EPD	BW	WW	YW	CED	CEM	Milk	CW	MARB	REA	FAT
	2.4	64	113	8.0	5.0	21	42	0.30	0.19	0.008



Paternal brother, HF Two Wraps 12H, sold to Forbes Ranching Ltd. for \$25,000



Paternal grand dam, HF Rosebud 246Z

This is just one more calf that fits the mold. This is one of two ET calves out of HF Roper 27F x HF Tibbie 22C. Every calf out of 22C seems to carry a lot of their mother's characteristics, more moderate in frame size but just nice easy doing cattle that are built right. Hot Pistol is just that, built right. He is well balanced and phenotypically appealing, and he moves like a cat. He's soft made with a nice coat of hair and has a pleasant demeanor to him. To many of our customers, docility is very important, and Hot Pistol's mother breeds well tempered animals that are pleasant to work with. Keep an eye out for his flush brother 268J.

**246J**

Bull • HAMI 246J • February 11 2021 • #2208058

**HF LEFTY 246J**

POSS ELEMENT 215	POSS EASY IMPACT 0119	Act BW 72
<b>BARTELS ELEMENT 1028 651</b>	POSS ERICA 004	Adj WW 845
BLACK LOU 6040 1028 BARTELS	CONNEALY REFLECTION	Adj YW 1273
	MS MCK BLACK ALLIANCE 6040	ADG 2.67
MUSGRAVE BIG SKY	CONNEALY EARNAN 076E	
<b>HF TIBBIE 221E</b>	SAV PRIMROSE 7861	
HF TIBBIE 168A	CONNEALY CONSENSUS 7229	
	HF TIBBIE 1W	

EPD	BW	WW	YW	CED	CEM	Milk	CW	MARB	REA	FAT
-1.1	65	110	12.0	15.0	30	40	0.50	0.48	0.021	

**247J**

Bull • HAMI 247J • February 11 2021 • #2208059

**HF ELEMENT 247J**

POSS ELEMENT 215	POSS EASY IMPACT 0119	Act BW 78
<b>BARTELS ELEMENT 1028 651</b>	POSS ERICA 004	Adj WW 845
BLACK LOU 6040 1028 BARTELS	CONNEALY REFLECTION	Adj YW 1284
	MS MCK BLACK ALLIANCE 6040	ADG 2.74
HF G-MAN 29B	HF SIMULATOR 62Z	
<b>BAR-E-L BRIDE 4F</b>	HF ECHO 178W	
BAR-E-L BRIDE 114D	MUSGRAVE BIG SKY	
	DBRL 94T BRIDE 4W	

EPD	BW	WW	YW	CED	CEM	Milk	CW	MARB	REA	FAT
1.2	68	110	8.0	13.0	25	34	0.41	0.44	0.035	

**250J**

Bull • HAMI 250J • February 12 2021 • #2208061

**HF STORM CENTER 250J**

MUSGRAVE BIG SKY	CONNEALY EARNAN 076E	Act BW 80
<b>HF STORM CENTER 26D</b>	SAV PRIMROSE 7861	Adj WW 778
HF MISS BLACKCAP 296Y	HF TIGER 5T	Adj YW 1167
	HF MISS BLACKCAP 27R	ADG 2.43
GREENS PREMIUM 7578	WK ULTIMATUM	
<b>HF ERICA 101Y</b>	GREENS LORI 5078	
HF ERICA 26T	HF KODIAK 5R	
	HF ERICA 182R	

EPD	BW	WW	YW	CED	CEM	Milk	CW	MARB	REA	FAT
1.6	58	96	5.0	10.0	23	34	0.38	0.50	0.015	

**251J**

Bull • HAMI 251J • February 13 2021 • #2208062

**HF SHOWMAN 251J**

SCHIEFELBEIN ATTRACTIVE 4565	JMB TRACTION 292	Act BW 72
<b>SCHIEFELBEIN SHOWMAN 338</b>	FROSTY ANSWER 3979	Adj WW 815
FROSTY ELBA 3745	S A V RENOWN 3439	Adj YW 1359
	FROSTY UPWARD 1100	ADG 3.40
BAR-H CROSSFIRE 63A	S TITLEST 1145	
<b>HF RUBY 196F</b>	HF TIBBIE 93U	
HF RUBY 10B	HF SYNDICATE 213Z	
	HF RUBY 35Z	

EPD	BW	WW	YW	CED	CEM	Milk	CW	MARB	REA	FAT
-0.9	68	126	11.0	12.0	27	48	0.30	0.57	0.019	



Push that snooze button and you'll end up working for someone who didn't.



**252J** Bull • HAMI 252J • February 13 2021 • #2208063

**HF SLAMMER 252J**

SCHIEFELBEIN ATTRACTIVE 4565  
**SCHIEFELBEIN SHOWMAN 338**  
FROSTY ELBA 3745

HA COWBOY UP 5405  
**HF MISS BLACKCAP 101F**  
HF MISS BLACKCAP 296Y

JMB TRACTION 292  
FROSTY ANSWER 3979  
S A V RENOWN 3439  
FROSTY UPWARD 1100  
HA OUTSIDE 3008  
HA BLACKCAP LADY 1602  
HF TIGER 5T  
HF MISS BLACKCAP 27R

Act BW	83
Adj WW	786
Adj YW	1286
ADG	3.13

BW	2.6
WW	75
YW	135
CED	5.0
CEM	6.0
Milk	21
CW	51
MARB	0.10
REA	0.79
FAT	-0.029



Maternal brother to dam, HF Black Ace 30B, sold to Pleasant Valley Farm for \$42,000



Dam, HF Miss Blackcap 101F, sold to Nelson Ranching for \$18,000

HF Slammer 252J is an interesting breeding piece that is very worthy of your consideration. Phenotypically he fits the mold of a big time herd bull but there is also a lot of points to back up his physical presence when you go back and check out his pedigree. His young dam is a flush sister to HF Cowboy Cadillac 128E, which sold through our 2018 sale to Hextall Livestock. Another brother sold to East & West Ranching for \$19,000.00. Another brother sold to Parkview Farms for \$14,000.00... plus numerous others. HF Miss Blackcap 101F, herself, sold through our 2019 sale to Kevin Nelson for \$18,000.00. She is the right kind, packing a tight level under, good feet, and ideal confirmation.



**254J** Bull • HAMI 254J • February 13 2021 • #2208065

**HF STORM CENTER 254J**

MUSGRAVE BIG SKY  
**HF STORM CENTER 26D**  
HF MISS BLACKCAP 296Y

CONNEALY CONSENSUS 7229  
**HF ERICA 317Z**  
HF ERICA 25K

CONNEALY EARNAN 076E  
SAV PRIMROSE 7861  
HF TIGER 5T  
HF MISS BLACKCAP 27R  
CONNEALY CONSENSUS  
BLUE LILLY OF CONANGA 16  
GREENS PREMIUM 7578  
HF ERICA 61F

Act BW	83
Adj WW	759
Adj YW	1143
ADG	2.40

EPD	BW	WW	YW	CED	CEM	Milk	CW	MARB	REA	FAT
	1.8	53	90	6.0	8.0	20	17	0.39	0.33	0.022



**255J** Bull • HAMI 255J • February 13 2021 • #2208066

**HF TWISTER 255J**

MUSGRAVE BIG SKY  
**HF STORM CENTER 26D**  
HF MISS BLACKCAP 296Y

HF REBEL 53Y  
**HF QUEENIE 74A**  
HF QUEENIE 60R

CONNEALY EARNAN 076E  
SAV PRIMROSE 7861  
HF TIGER 5T  
HF MISS BLACKCAP 27R  
HF TIGER 5T  
HF TIBBIE 103T  
HF CHALLENGER 42N  
HF QUEENIE 204N

Act BW	85
Adj WW	803
Adj YW	1220
ADG	2.60

EPD	BW	WW	YW	CED	CEM	Milk	CW	MARB	REA	FAT
	1.2	51	83	6.0	9.0	23	24	0.16	0.39	0.014



**257J** Bull • HAMI 257J • February 13 2021 • #2208067

**HF SHOWMAN 257J**

SCHIEFELBEIN ATTRACTIVE 4565	JMB TRACTION 292	Act BW 70
<b>SCHIEFELBEIN SHOWMAN 338</b>	FROSTY ANSWER 3979	Adj WW 788
FROSTY ELBA 3745	S A V RENOWN 3439	Adj YW 1271
	FROSTY UPWARD 1100	ADG 3.02
HF POWDER KEG 71C	HF TIGER 5T	
<b>HF TIBBIE 108F</b>	HF EVENING TINGE 294X	
HF TIBBIE 54C	HF SYNDICATE 213Z	
	HF TIBBIE 312W	



EPD	BW	WW	YW	CED	CEM	Milk	CW	MARB	REA	FAT
0.7	72	130	9.0	10.0	23	58	0.16	0.78	-0.13	



**260J** Bull • HAMI 260J • February 16 2021 • #2208068

**HF SHOWMAN 260J**

SCHIEFELBEIN ATTRACTIVE 4565	JMB TRACTION 292	Act BW 85
<b>SCHIEFELBEIN SHOWMAN 338</b>	FROSTY ANSWER 3979	Adj WW 814
FROSTY ELBA 3745	S A V RENOWN 3439	Adj YW 1364
	FROSTY UPWARD 1100	ADG 3.44
BARTELS ELEMENT 1028 651	POSS ELEMENT 215	
<b>HF ROSEBUD 194F</b>	BLACK LOU 6040 1028 BARTELS	
HF ROSEBUD 255D	HF REBEL 53Y	
	HF ROSEBUD 98P	

EPD	BW	WW	YW	CED	CEM	Milk	CW	MARB	REA	FAT
2.8	75	133	3.0	10.0	27	56	0.27	0.76	-0.15	



**261J** Bull • HAMI 261J • February 16 2021 • #2224211

**HF LIVING LARGE 261J ET**

BASIN PAYWEIGHT 1682	BASIN PAYWEIGHT 006S	Act BW 85
<b>POSS MAVERICK</b>	21AR O LASS 7017	Adj WW 815
POSS PRIDE 5163	POSS HOOVER DAM 2509	Adj YW 1331
	POSS PRIDE 9526	ADG 3.23
DUFF 927K MOVIN UP 874	DUFF MOVIN UP 612	
<b>HF EVENING TINGE 294X</b>	O C C JUANADA 927K	
HF EVENING TINGE 157U	BWB TRAVELER 110P	
	HF EVENING TINGE 127L	

EPD	BW	WW	YW	CED	CEM	Milk	CW	MARB	REA	FAT
2.9	71	117	3.0	5.5	26	46	0.57	0.58	0.010	



**267J** Bull • HAMI 267J • February 17 2021 • #2224225

**HF SPLINTER 267J ET**

BASIN PAYWEIGHT 1682	BASIN PAYWEIGHT 006S	Act BW 81
<b>POSS MAVERICK</b>	21AR O LASS 7017	Adj WW 763
POSS PRIDE 5163	POSS HOOVER DAM 2509	Adj YW 1219
	POSS PRIDE 9526	ADG 2.85
DUFF 927K MOVIN UP 874	DUFF MOVIN UP 612	
<b>HF EVENING TINGE 294X</b>	O C C JUANADA 927K	
HF EVENING TINGE 157U	BWB TRAVELER 110P	
	HF EVENING TINGE 127L	

EPD	BW	WW	YW	CED	CEM	Milk	CW	MARB	REA	FAT
2.2	64	107	3.0	5.5	26	46	0.57	0.58	0.010	





**268J** Bull • HAMI 268J • February 18 2021 • #2224223

**HF PAINTED SMILE 268J ET**

HA COWBOY UP 5405	HA OUTSIDE 3008	Act BW	87							
<b>HF ROPER 27F</b>	HA BLACKCAP LADY 1602	Adj WW	676							
HF ROSEBUD 246Z	HF TIGER 5T	Adj YW	1148							
	HF ROSEBUD 94P	ADG	2.95							
PLEASANT VALLEY LUTE 1207	PLAINVIEW LUTTON E102									
<b>HF TIBBIE 22C</b>	CHERRY KNOLL ELSA 8014									
HF TIBBIE 212X	HF TIGER 5T									
	HF TIBBIE 96F									
EPD	BW	WW	YW	CED	CEM	Milk	CW	MARB	REA	FAT
	2.4	54	102	8.0	5.5	21	42	0.31	0.19	0.006



**269J** Bull • HAMI 269J • February 18 2021 • #2224299

**HF STUNNER 269J**

MUSGRAVE 316 STUNNER	LD CAPITALIST 316	Act BW	88							
<b>RIVER VALLEY STUNNER 4G</b>	MCATL BLACKBIRD 831-1378	Adj WW	851							
RIVER VALLEY LADY 2E	MOHNN IMPRESSIVE 1093	Adj YW	1346							
	RIVER VALLEY LADY 11B	ADG	3.09							
HA COWBOY UP 5405	HA OUTSIDE 3008									
<b>HF MISS ANNIE 115G</b>	HA BLACKCAP LADY 1602									
HF MISS ANNIE 295A	SH SUPERMAN 0159									
	HF MISS ANNIE 216X									
EPD	BW	WW	YW	CED	CEM	Milk	CW	MARB	REA	FAT
	3.7	75	124	0.0	0.0	26	-	-	-	-



**270J** Bull • HAMI 270J • February 18 2021 • #2208072

**HF GONE COUNTRY 270J**

POSS ELEMENT 215	POSS EASY IMPACT 0119	Act BW	90							
<b>BARTELS ELEMENT 1028 651</b>	POSS ERICA 004	Adj WW	838							
BLACK LOU 6040 1028 BARTELS	CONNELLY REFLECTION	Adj YW	1305							
	MS MCK BLACK ALLIANCE 6040	ADG	2.92							
HF TIGER 5T	HF KODIAK 5R									
<b>HF TIBBIE 159E</b>	HF ECHO 84R									
HF TIBBIE 210C	LLB REFLECTION 607A									
	HF TIBBIE 258W									
EPD	BW	WW	YW	CED	CEM	Milk	CW	MARB	REA	FAT
	3.2	69	119	3.0	9.0	32	51	0.27	0.51	0.019



**271J** Bull • HAMI 271J • February 19 2021 • #2224300

**HF STUNNER 271J**

MUSGRAVE 316 STUNNER	LD CAPITALIST 316	Act BW	75							
<b>RIVER VALLEY STUNNER 4G</b>	MCATL BLACKBIRD 831-1378	Adj WW	840							
RIVER VALLEY LADY 2E	MOHNN IMPRESSIVE 1093	Adj YW	1279							
	RIVER VALLEY LADY 11B	ADG	2.74							
GRAND RIVER DOWNLOAD 1917	BALDRIDGE DOWNLOAD 2013									
<b>HF EVENING TINGE 166G</b>	AHA QUEEN MOTHER 9322									
HF EVENING TINGE 294X	DUFF 927K MOVIN UP 874									
	HF EVENING TINGE 157U									
EPD	BW	WW	YW	CED	CEM	Milk	CW	MARB	REA	FAT
	1.6	69	111	5.0	7.0	25	-	-	-	-



**274J**

Bull • HAMI 274J • February 20 2021 • #2208075

**HF ELEMENT 274J**

POSS ELEMENT 215  
**BARTELS ELEMENT 1028 651**  
 BLACK LOU 6040 1028 BARTELS  
  
 PLEASANT VALLEY LUTE 1207  
**HF PRIDE 126D**  
 HF PRIDE 27U

POSS EASY IMPACT 0119  
 POSS ERICA 004  
 CONNEALY REFLECTION  
 MS MCK BLACK ALLIANCE 6040  
 PLAINVIEW LUTTON E102  
 CHERRY KNOLL ELSA 8014  
 HF KODIAK SR AMF CAF OHF MTF  
 HF PRIDE 61S

Act BW	88
Adj WW	751
Adj YW	1240
ADG	3.06

EPD	BW	WW	YW	CED	CEM	Milk	CW	MARB	REA	FAT
	2.1	56	97	5.0	11.0	22	43	0.33	0.55	0.013



Maternal grand dam, HF Tibbie 27A



Full brother, HF Element 282G, sold to East &amp; West Ranching for \$8,000

**283J**

Bull • HAMI 283J • February 26 2021 • #2208083

**HF SLOW RIDE 283J**

POSS ELEMENT 215  
**BARTELS ELEMENT 1028 651**  
 BLACK LOU 6040 1028 BARTELS

MUSGRAVE BIG SKY  
**HF TIBBIE 29E**  
 HF TIBBIE 27A

POSS EASY IMPACT 0119  
 POSS ERICA 004  
 CONNEALY REFLECTION  
 MS MCK BLACK ALLIANCE 6040  
 CONNEALY EARNAN 076E  
 SAV PRIMROSE 7861  
 HF TIGER 5T  
 HF TIBBIE 258W

Act BW	82
Adj WW	797
Adj YW	1275
ADG	2.99



BW	1.1
WW	60
YW	106
CED	9.0
CEM	13.0
Milk	26
CW	42
MARB	0.47
REA	0.43
FAT	0.029

A sale highlight by Element who has been quietly working behind the scenes at Hamilton Farms over the last few years, supplying us with functional cattle that are built to last. Good footed, tidy udders, and consistently manageable birthweights are what we expect from Element. HF Slow Ride is powerful in his build. A moderate birthweight and 3 pounds shy of an 800 pound weaning weight make him an ideal candidate for a herd bull prospect. Slow Ride's dam is a super nice young cow with a beautiful udder and sound structure. We have a maternal sister to Slow Ride retained in herd which has produced her first calf at just 22 months of age and doing a great job. A maternal brother to Slow Ride, sold as a heifer's first calf through our 2020 sale to East & West Ranching for \$8000.00.

Success builds character, failure reveals it.



**284J** Bull • HAMI 284J • February 26 2021 • #2208084

**HF PERFECT STORM 284J**

MUSGRAVE BIG SKY	CONNEALY EARNAN 076E	Act BW 82
<b>HF STORM CENTER 26D</b>	SAV PRIMROSE 7861	Adj WW 828
HF MISS BLACKCAP 296Y	HF TIGER 5T	Adj YW 1272
	HF MISS BLACKCAP 27R	ADG 2.78
CONNEALY CONSENSUS DDF	CONNEALY CONSENSUS	
<b>HF TIBBIE 77Z</b>	BLUE LILLY OF CONANGA 16	
HF TIBBIE 100M	REMITALL ICEMAN 10K	
	HF TIBBIE 86K	

EPD	BW	WW	YW	CED	CEM	Milk	CW	MARB	REA	FAT
1.3	55	95	7.0	8.0	25	32	0.52	0.45	0.024	



**291J** Bull • HAMI 291J • March 02 2021 • #2208090

**HF STORM CENTER 291J**

MUSGRAVE BIG SKY	CONNEALY EARNAN 076E	Act BW 81
<b>HF STORM CENTER 26D</b>	SAV PRIMROSE 7861	Adj WW 840
HF MISS BLACKCAP 296Y	HF TIGER 5T	Adj YW 1256
	HF MISS BLACKCAP 27R	ADG 2.60
HF TIGER 5T	HF KODIAK 5R	
<b>HF BARBARA MCHENRY 192Y</b>	HF ECHO 84R	
HF BARBARA MCHENRY 126R	BT RIGHT TIME 24J	
	HF BARBARA MCHENRY 70G	

EPD	BW	WW	YW	CED	CEM	Milk	CW	MARB	REA	FAT
1.9	59	100	7.0	10.0	26	33	0.25	0.47	0.004	



**293J** Bull • HAMI 293J • March 03 2021 • #2208092

**HF ELEMENT 293J**

POSS ELEMENT 215	POSS EASY IMPACT 0119	Act BW 86
<b>BARTELS ELEMENT 1028 651</b>	POSS ERICA 004	Adj WW 776
BLACK LOU 6040 1028 BARTELS	CONNEALY REFLECTION	Adj YW 1287
	MS MCK BLACK ALLIANCE 6040	ADG 3.19
MUSGRAVE BIG SKY	CONNEALY EARNAN 076E	
<b>HF BELLA 11D</b>	SAV PRIMROSE 7861	
MARSTON BELLA 1Z	HF TIGER 5T	
	EXAR BLACK BELLE 0046	

EPD	BW	WW	YW	CED	CEM	Milk	CW	MARB	REA	FAT
1.7	58	102	7.0	15.0	27	46	0.45	0.51	0.015	



**296J** Bull • HAMI 296J • March 05 2021 • #2208095

**HF STORM CENTER 296J**

MUSGRAVE BIG SKY	CONNEALY EARNAN 076E	Act BW 94
<b>HF STORM CENTER 26D</b>	SAV PRIMROSE 7861	Adj WW 777
HF MISS BLACKCAP 296Y	HF TIGER 5T	Adj YW 1221
	HF MISS BLACKCAP 27R	ADG 2.78
RING CREEK BURL IVES 88Y	RING CREEK BARDOLINE 69W	
<b>HF TIBBIE 98B</b>	HEATHER OF RING CREEK 447W	
HF TIBBIE 52W	HF KODIAK 5R	
	2HR TIBBIE 37R	

EPD	BW	WW	YW	CED	CEM	Milk	CW	MARB	REA	FAT
2.6	52	87	4.0	7.0	19	27	0.29	0.63	0.002	





Dam, HF Pride 223G, sold to Grand River Angus for \$5,000



Maternal brother to dam, HF Silversmith 225H, sold to Jenkins Lazy U Ranching \$9,000

One of the younger bulls in the offering by our Acclaim bull which we have been using extensively to follow AI program on heifers. HF Acclaim 297J will offer adequate performance while maintaining calving ease, and foot quality. Note his adjusted weaning weight coming in at 883 pounds. Acclaim 297J is the first coupon clipped from a super up and coming young female which we will be keeping a sharp eye on for future features.



Maternal brother to dam, HF Cloud-9 67E, sold to Poplar Meadows Angus for \$32,500



Dam, HF Rosebud 161F, sold to Nelson Ranching for \$10,000

The youngest bull in the offering, but truly one of the bulls for you to check out. There is always an advantage for younger bulls in a contemporary group to rank higher, but none the less, Seismic Zone's number 1 weaning ranking at 910 pounds cannot be overlooked. He backs up that impressive weaning weight with a equally impressive 1477 pound yearling weight. His young mother is ramping things up and undoubtedly will bring more to come.



## 297J

Bull • HAMI 297J • March 06 2021 • #2208096

### HF ACCLAIM 297J

JINDRA ACCLAIM  
**JCH J&K ACCLAIM 9013**  
 JCH J&K POLLY 7604

BUSHES DOMINO EFFECT 607  
**HF PRIDE 223G**  
 HF PRIDE 123D

JINDRA 3RD DIMENSION  
 JINDRA BLACKBIRD LASSY 1111  
 S CHISUM 255  
 JCH J&K POLLY 5665  
 S WHITLOCK 179  
 BUSHES TIME QUEEN 8852  
 PLEASANT VALLEY LUTE 1207  
 HF PRIDE 63Y

Act BW	80
Adj WW	883
Adj YW	1327
ADG	2.78

BW	2.9
WW	75
YW	135
CED	2.0
CEM	9.0
Milk	22
CW	56
MARB	0.40
REA	0.34
FAT	0.021



## 303J

Bull • HAMI 303J • March 19 2021 • #2208102

### HF SEISMIC ZONE 303J

SCHIEFELBEIN ATTRACTIVE 4565  
**SCHIEFELBEIN SHOWMAN 338**  
 FROSTY ELBA 3745

HA COWBOY UP 5405  
**HF ROSEBUD 161F**  
 HF ROSEBUD 259C

JMB TRACTION 292  
 FROSTY ANSWER 3979  
 S A V RENOWN 3439  
 FROSTY UPWARD 1100  
 HA OUTSIDE 3008  
 HA BLACKCAP LADY 1602  
 LLB REFLECTION 607A  
 HF ROSEBUD 217Z

Act BW	76
Adj WW	910
Adj YW	1477
ADG	3.54



BW	0.3
WW	83
YW	149
CED	9.0
CEM	9.0
Milk	26
CW	53
MARB	0.21
REA	0.73
FAT	0.023



Cochrane, AB



Cole Giles  
403-862-1395



Taylor Giles  
403-703-3026

Cole Giles and his sister Taylor operate 3G Cattle Ventures and they have been consigning these extra age bulls to our offering for a number of years now. The Giles family are close neighbors and have been raising Black Angus for a number of years. Many of their genetics are related to HF breeding, so this provides a really 'good fit', to offer these aged bulls in our sale. We have a close working relationship with the Giles, and in particular Cole, who has taken care of show and sale cattle for us for a number of years. Their cattle operation consists of a large commercial cow herd and a smaller select herd of purebred cows. The purebred cows thrive under the same management conditions as the commercial herd so you can be assured that the bulls offered here will be ranch ready and trouble free.

These 2-year-olds have been targeted for sale as aged bulls, and no bulls have been sold from this group previously. They are April, May, born bulls and have been raised strictly on a high forage-based ration through their first winter, and then pastured until they were 19 months old. From November 1, 2021, they were introduced to a high roughage TMR, and developed slowly up until sale time.



**RCT 4H**

RCT 4H • April 02 2020 • #2180542

**3 "G" HERMES 4H**

HA COWBOY UP 540S  
**HF ROPER 27F**  
 HF ROSEBUD 246Z

HA OUTSIDE 3008  
 HA BLACKCAP LADY 1602  
 HF TIGER 5T  
 HF ROSEBUD 94P  
 BAR-H CROSSFIRE 63A  
 HF TIBBIE 76Z  
 3 G RINGO 1W  
 HF MAYFLOWER 221U

Act BW 80  
 Adj WW 662



HF SHOOT OUT 49D  
**3 "G" MAYFLOWER 35F**  
 3 G MAYFLOWER 4Y

EPD	BW	WW	YW	CED	CEM	Milk	CW	MARB	REA	FAT
	0.5	55	104	11.0	7.0	21	-	-	-	-

**RCT 5H**

RCT 5H • April 04 2020 • #2180541

**3 "G" HAZARD 5H**

HA COWBOY UP 540S  
**HF ROPER 27F**  
 HF ROSEBUD 246Z

HA OUTSIDE 3008  
 HA BLACKCAP LADY 1602  
 HF TIGER 5T  
 HF ROSEBUD 94P  
 BAR-H CROSSFIRE 63A  
 HF TIBBIE 76Z  
 3 "G" HEADS UP 14B  
 CHICO PRIDE 52Z

Act BW 75  
 Adj WW 693



HF SHOOT OUT 49D  
**3 "G" PRIDE 29F**  
 3 "G" PRIDE 12D

EPD	BW	WW	YW	CED	CEM	Milk	CW	MARB	REA	FAT
	-0.2	61	111	12.0	7.0	22	-	-	-	-

**RCT 8H**

RCT 8H • April 06 2020 • #2189082

**3 "G" HERO 8H**

HA OUTSIDE 3008  
**HA COWBOY UP 540S**  
 HA BLACKCAP LADY 1602

KG SOLUTION 0018  
 HA EVER LADY 1575  
 SITZ UPWARD 307R  
 HA BLACKCAP LADY 5515  
 HF TIGER 5T  
 HF TIBBIE 103T  
 HF KODIAK 5R  
 2HR ANNIE 215R

Act BW 80  
 Adj WW 656



HF REBEL 53Y  
**HF ANNIE K 16B**  
 HF ANNIE K 157Y

EPD	BW	WW	YW	CED	CEM	Milk	CW	MARB	REA	FAT
	0.1	58	105	8.0	7.5	24	38	0.11	0.33	-0.008

**RCT 13H**

RCT 13H • April 10 2020 • #2174644

**3 "G" HARLEN 13H**

BAR-H CROSSFIRE 63A  
**HF SHOOT OUT 49D**  
 HF TIBBIE 76Z

S TITLST 1145  
 HF TIBBIE 93U  
 HF EL TIGRE 28U  
 HF TIBBIE 147K  
 HF TIGER 5T  
 3 G ERICA 1 U  
 CHICO XECUTIVE 15X  
 TRIARA PRIDE 610X

Act BW 100  
 Adj WW 725

3 "G" TIGER 2A  
**3 "G" PRIDE 21C**  
 CHICO PRIDE 52Z

EPD	BW	WW	YW	CED	CEM	Milk	CW	MARB	REA	FAT
	3.1	58	102	0.0	4.0	27	-	-	-	-



3G CATTLE VENTURES 2 YEAR OLD BULLS

Anyone can give up, that's easy to do. But to hold it together when everyone would understand if you fell apart, that's true strength.



**RCT 16H**

RCT 16H • April 12 2020 • #2174643

**3 "G" HAMIN 16H**

BAR-H CROSSFIRE 63A  
**HF SHOOT OUT 49D**  
 HF TIBBIE 76Z

PLEASANT VALLEY LUTE 1207  
**HF RUBY 138D**  
 HF RUBY 237Z

S TITLST 1145  
 HF TIBBIE 93U  
 HF EL TIGRE 28U  
 HF TIBBIE 147K  
 PLAINVIEW LUTTON E102  
 CHERRY KNOLL ELSA 8014  
 HF TIGER 5T  
 HF RUBY 62U

Act BW 95  
 Adj WW 641

EPD	BW	WW	YW	CED	CEM	Milk	CW	MARB	REA	FAT
	3.6	59	102	2.0	6.0	25	-	-	-	-



**RCT 25H**

RCT 25H • April 19 2020 • #2188943

**3 "G" HOSEA 25H ET**

SILVEIRAS CONVERSION 8064  
**BUBS SOUTHERN CHARM AA31**  
 HICKORY HILL ERICA 009

HF TIGER 5T  
**HF EVENING TINGE 218X**  
 2HR EVENING TINGE 12S

BT CROSSOVER 758N  
 EXG SARAS DREAM S609 R3  
 CONNEALY STIMULUS 8419  
 HICKORY HILL ERICA TA32  
 HF KODIAK 5R  
 HF ECHO 84R  
 BT TOUCHDOWN 14N  
 HF EVENING TINGE 188M

Act BW 100  
 Adj WW 714

EPD	BW	WW	YW	CED	CEM	Milk	CW	MARB	REA	FAT
	3.8	59	107	5.0	5.5	30	47	0.64	0.67	0.012



**RCT 26H**

RCT 26H • April 19 2020 • #2174639

**3 "G" HOWIE 26H**

BAR-H CROSSFIRE 63A  
**HF SHOOT OUT 49D**  
 HF TIBBIE 76Z

WK SMOOTH 2382  
**HF BLACKWOOD LADY 19C**  
 HF BLACKWOOD LADY 76W

S TITLST 1145  
 HF TIBBIE 93U  
 HF EL TIGRE 28U  
 HF TIBBIE 147K  
 SYDGEN DOC 9017  
 THOENE IN FOCUS 763  
 HF TIGER 5T  
 HF BLACKWOOD LADY 282T

Act BW 85  
 Adj WW 678



EPD	BW	WW	YW	CED	CEM	Milk	CW	MARB	REA	FAT
	1.4	57	97	-	-	23	-	-	-	-



**RCT 28H**

RCT 28H • April 20 2020 • #2188972

**3 "G" HASTING 28H ET**

SILVEIRAS CONVERSION 8064  
**BUBS SOUTHERN CHARM AA31**  
 HICKORY HILL ERICA 009

HF TIGER 5T  
**HF EVENING TINGE 218X**  
 2HR EVENING TINGE 12S

BT CROSSOVER 758N  
 EXG SARAS DREAM S609 R3  
 CONNEALY STIMULUS 8419  
 HICKORY HILL ERICA TA32  
 HF KODIAK 5R  
 HF ECHO 84R  
 BT TOUCHDOWN 14N  
 HF EVENING TINGE 188M

Act BW 100  
 Adj WW 772

EPD	BW	WW	YW	CED	CEM	Milk	CW	MARB	REA	FAT
	3.6	63	112	5.0	5.5	30	47	0.64	0.67	0.012

**RCT 32H**

RCT 32H • April 24 2020 • #2188974

**3 "G" HAYWOOD 32H ET**

SILVEIRAS CONVERSION 8064  
**BUBS SOUTHERN CHARM AA31**  
 HICKORY HILL ERICA 009

BT CROSSOVER 758N  
 EXG SARAS DREAM S609 R3  
 CONNEALY STIMULUS 8419  
 HICKORY HILL ERICA TA32  
 HF KODIAK 5R  
 HF ECHO 84R  
 BT TOUCHDOWN 14N  
 HF EVENING TINGE 188M

Act BW 85  
 Adj WW 743



HF TIGER 5T

**HF EVENING TINGE 218X**

2HR EVENING TINGE 12S

EPD	BW	WW	YW	CED	CEM	Milk	CW	MARB	REA	FAT
	1.5	59	104	5.0	5.5	30	47	0.64	0.67	0.012

**RCT 37H**

RCT 37H • April 28 2020 • #2174636

**3 "G" HARRAZ 37H**

BAR-H CROSSFIRE 63A  
**HF SHOOT OUT 49D**  
 HF TIBBIE 76Z

S TITTEST 1145  
 HF TIBBIE 93U  
 HF EL TIGRE 28U  
 HF TIBBIE 147K  
 MCATL PURE PRODUCT 903-55  
 HF EVENING TINGE 6X  
 CONNEALY CONSENSUS 7229  
 HF TIBBIE 65U

Act BW 85  
 Adj WW 663



HF SIMULATOR 62Z

**HF TIBBIE 119C**

HF TIBBIE 69A

EPD	BW	WW	YW	CED	CEM	Milk	CW	MARB	REA	FAT
	1.3	49	87	9.0	10.0	25	39	0.42	0.26	0.039

**RCT 42H**

RCT 42H • May 05 2020 • #2175442

**3 "G" HUTCH 42H**

HA COWBOY UP 5405  
**HF ALL-ROUND 130E**  
 HF MISS BLACKCAP 296Y

HA OUTSIDE 3008  
 HA BLACKCAP LADY 1602  
 HF TIGER 5T  
 HF MISS BLACKCAP 27R  
 BAR-H CROSSFIRE 63A  
 HF TIBBIE 76Z  
 3 "G" HEADS UP 14B  
 HF ERICA 353Z

Act BW 85  
 Adj WW 755

HF SHOOT OUT 49D

**3 "G" ERICA 20F**

3 "G" ERICA 6D

EPD	BW	WW	YW	CED	CEM	Milk	CW	MARB	REA	FAT
	3.1	60	106	3.0	5.0	23	43	0.14	0.48	0.000

**RCT 44H**

RCT 44H • May 08 2020 • #2175440

**3 "G" HARLOW 44H**

HA COWBOY UP 5405  
**HF ALL-ROUND 130E**  
 HF MISS BLACKCAP 296Y

HA OUTSIDE 3008  
 HA BLACKCAP LADY 1602  
 HF TIGER 5T  
 HF MISS BLACKCAP 27R  
 KR BULLSEYE 3451  
 HF TIBBIE 101Z  
 WK SMOOTH 2382  
 BLAST MISS MAYFLOWER 10X

Act BW 75  
 Adj WW 586



HF BULLEEY 238C

**3 "G" MISS MAYFLOWER60F**

HF MISS MAYFLOWER 233C

EPD	BW	WW	YW	CED	CEM	Milk	CW	MARB	REA	FAT
	1.6	43	85	7.0	8.0	18	24	0.24	0.45	-0.017



3G CATTLE VENTURES 2 YEAR OLD BULLS

# HAMILTON FARMS

## 2021 BORN FEATURE OPEN HEIFERS

Once again we have dug deep into the replacement pen to bring you some of the best individuals, based on genetics and phenotype.

These females exhibit everything that we at Hamilton Farms strive for...Power and performance combined with top maternal traits from our most proven cow families.



**1J**

Female • HAMI 1J • January 02 2021 • #2207879

### HF ROSEBUD 1J

AVF BREAKOUT 5409  
**MAY-WAY BREAKOUT 1310**  
 MAY-WAY LADY BANDO 086

HA COWBOY UP 5405

**HF ROSEBUD 212E**  
 HF ROSEBUD 98P

S A V BISMARCK 5682  
 AVF SARA 0045  
 MAY-WAY 112 819  
 MAY-WAY LADY BANDO 745  
 HA OUTSIDE 3008  
 HA BLACKCAP LADY 1602 OHF  
 RIVERBEND POWERLINE 0050  
 HF ROSEBUD 138J

Act BW	84
Adj WW	744
Adj YW	1058
ADG	1.97

BW	3.2
WW	67
YW	116
CED	5.0
CEM	8.0
Milk	30
CW	31
MARB	0.55
REA	0.21
FAT	0.038



Full sister to dam, HF Rosebud 253E, sold to Grand River Angus \$7,000



Maternal brother to dam, HF Prowler 43U

It is quite appropriate that the heifer to lead off the pen of heifers this year is HF Rosebud 1J. The Rosebud cow family was one of the foundation cows that got the ball really rolling at Hamilton Farms. Rosebud 1J is very complete in her make up, deep bodied, wedge shaped, great hair with the appearance of immense potential to survive our nasty winter climate. What a catchy, attractive Angus head and overall appearance! Her dam Rosebud 212E is a maternal sister to the well known and used bull HF Prowler 43U. Rosebud ranks in the top 6 & 7% for Weaning and Yearling Wts and Top 4% for milk. The performance in this female is top notch.

With May-Way Breakout on the top side of the pedigree makes her a paternal sister to the record setting HF Alcatraz 60F who has been used extensively throughout the world!

Perfection is not attainable, but if we chase perfection we can catch excellence.

**11J**

Female • HAMI 11J • January 05 2021 • #2207886

**HF ANNIE K 11J**

SCHIEFELBEIN ATTRACTIVE 4565  
**SCHIEFELBEIN SHOWMAN 338**  
 FROSTY ELBA 3745

KR BULLSEYE 3451

**HF ANNIE K 264C**  
 HF ANNIE K 31A

JMB TRACTION 292  
 FROSTY ANSWER 3979  
 S A V RENOWN 3439  
 FROSTY UPWARD 1100  
 MOGCK BULLSEYE  
 WK QUEEN 1540  
 HF REBEL 53Y  
 2HR ANNIE 215R

Act BW	60
Adj WW	650
Adj YW	970
ADG	2.00



EPD	BW	WW	YW	CED	CEM	Milk	CW	MARB	REA	FAT
	1.7	73	129	6.5	10.5	28	52	0.29	0.81	-0.004

There are 14 Showman heifers in the Sale offering and I challenge you to find one that doesn't follow the exact same design in their makeup!! Annie 11J may be a rib longer, but that same attractive angus character through the front one third, tons of rib capacity and length and powerful muscle shape to compliment her unmatched femininity and style. Annie 11J posts a big time spread from calving ease to explosive yearling growth. She had two maternal sisters bought by Jaycee Dutchik in 2019 and 2020. A sterling pedigree is attached to this prospective matron.



Maternal brother, HF Cowboy Charm 24H, sold to Huxley Colony for \$12,000



Maternal sister to dam, HF Mistress 144G, sold to Grand River Angus for \$17,000

**20J**

Female • WACE 20J • January 08 2021 • #2207895

**HF MISTRESS 20J**

SCHIEFELBEIN ATTRACTIVE 4565  
**SCHIEFELBEIN SHOWMAN 338**  
 FROSTY ELBA 3745

CONNEALY CONSENSUS 7229

**HF MISTRESS 11A**  
 HF MISTRESS 98Y

JMB TRACTION 292  
 FROSTY ANSWER 3979  
 S A V RENOWN 3439  
 FROSTY UPWARD 1100  
 CONNEALY CONSENSUS DDF  
 BLUE LILLY OF CONANGA 16  
 HF TIGER 5T  
 HF MISTRESS 6M

Act BW	78
Adj WW	724
Adj YW	1028
ADG	1.90

BW	0.5
WW	73
YW	128
CED	7.0
CEM	9.0
Milk	26
CW	47
MARB	0.45
REA	0.64
FAT	-0.002

The Mistress cow family originally started at Hamilton Farms with HF Mistress 9481, when our son Wacey bought her from Express Ranches 20 years ago. When there are daughters, grand daughters and great grand daughters still functioning in the herd, it is a real testament to their ability to thrive and maintain their status within the herd. With the proven genetics of Tiger, Connealy Consensus and then adding the exciting new sire on the block, Schiefelbein Showman 338, Mistress 20J will turn heads on sale day! Is she not the definition of a true mama cow in the making? Note the spread from Birth to Yearling! The docility of this young female is incredible to go along with her stellar phenotype and easy fleshing ability. Mistress 20J has 3 generations of Elite Dams on the bottom side of her pedigree! What a combination with the power and performance of Showman on the top.

When we seek to discover the best in others, we somehow bring out the best in ourselves.



Maternal grand sire,  
HF Syndicate 213Z

**30J** Female • HAMI 30J • January 10 2021 • #2207904

**HF MISS BLACKCAP 30J**

MAY-WAY BREAKOUT 1310  
**HF ALCATRAZ 60F**  
HF MAYFLOWER 191Z  
  
HF SYNDICATE 213Z  
**HF MISS BLACKCAP 327F**  
HF MISS BLACKCAP 127D

AVF BREAKOUT 5409  
MAY-WAY LADY BANDO 086  
HF TIGER 5T  
HF MAYFLOWER 78P  
CONNELLY CONSENSUS 7229  
HF MISS BLACKCAP 27R  
BSF HOT LOTTO 1401  
HF MISS BLACKCAP 27R

Act BW	70
Adj WW	651
Adj YW	918
ADG	1.67

BW	1.8
WW	51
YW	95
CED	6.0
CEM	6.0
Milk	31
CW	-
MARB	-
REA	-
FAT	-

The Miss Blackcap pedigree goes deep within our herd. The Alcatraz females are without a doubt going to raise the bar in the herd in the coming years. They love their babies at birth, have tight milky udders and predictions are that they will bring home a fat and sassy calf come fall. Here is a female that is built from pedigrees that are tried and true with the likes of Tiger 5T, Syndicate 213Z and Miss Blackcap 27R. This could be a junior project for a keen young lad or lass as the Alcatraz progeny excel in the disposition category!



**55J** Female • HAMI 55J • January 13 2021 • #2207923

**HF ROSEBUD 55J**

MAY-WAY BREAKOUT 1310  
**HF ALCATRAZ 60F**  
HF MAYFLOWER 191Z  
  
HF WHO'S THAT 7A  
**HF ROSEBUD 58C**  
HF ROSEBUD 288Y

AVF BREAKOUT 5409  
MAY-WAY LADY BANDO 086  
HF TIGER 5T  
HF MAYFLOWER 78P  
HF TIGER 5T  
HF LUCY 317Y  
HF HEMI 151T  
HF ROSEBUD 278U

Act BW	79
Adj WW	590
Adj YW	937
ADG	2.17

EPD	BW	WW	YW	CED	CEM	Milk	CW	MARB	REA	FAT
	2.1	48	90	-	-	28	--	-	-	-

Rosebud 55J has mama cow written all over her. Her dam Rosebud 58C was a high selling female in our 2016 Sale for \$16,000.00. Rosebud 55J's dam and granddam have beautiful udders and sired by Alcatraz, there should be no room for error in that department. The Rosebud cow family is a favorite at Hamilton Farms and longevity is a big part of that, they seem to flourish with little maintenance. The maternal grandsire (Who's That 7A) was a high seller going to Minert-Simonson Angus in Nebraska in 2014 for \$40,000.00



**66J**

Female • HAMI 66J • January 15 2021 • #2207931

**HF BLACKCAP 66J**

MAY-WAY BREAKOUT 1310  
**HF ALCATRAZ 60F**  
 HF MAYFLOWER 191Z

HF COWBOY CADILLAC 128E  
**HF MISS BLACKCAP 77G**  
 HF MISS BLACKCAP 220C

AVF BREAKOUT 5409  
 MAY-WAY LADY BANDO 086  
 HF TIGER 5T  
 HF MAYFLOWER 78P  
 HA COWBOY UP 5405  
 HF MISS BLACKCAP 296Y  
 PLEASANT VALLEY LUTE 1207  
 HF MISS BLACKCAP 27R

Act BW	69
Adj WW	679
Adj YW	994
ADG	1.97



EPD	BW	WW	YW	CED	CEM	Milk	CW	MARB	REA	FAT
	0.6	56	102	10.0	4.0	34	44	0.35	0.56	0.026

Eye appeal and extension are words that come to mind on this fancy Alcatraz heifer. Her granddam Miss Blackcap 220C was a female you couldn't help but notice, she simply commanded your attention! The grandsire on the bottom of the pedigree HF Cowboy Cadillac 128E sold to Hextall Livestock for \$32,500.00 in 2018. Other siblings to the dam of 66J sold through Hamilton Farms Sale to Roe Livestock & 3G Cattle Ventures for \$16,000.00. Two maternal siblings to Miss Blackcap 77G sold in Hamilton Farms Sale in 2021 to Iris Creek Farms for \$9,500.00 and Lew Hayes for \$12,000.00. Alcatraz on the top side will add mass and muscle shape and amazing hair.



Sire, Bar-E-L Expansion 12G



Maternal Brother, HF Desert Fox 44E, sold to Leedale Farming Company for \$10,000

**75J**

Female • WACE 75J • January 16 2021 • #2224274

**HF MISTRESS 75J**

BAR-E-L CUTTING EDGE 124D  
**BAR-E-L EXPANSION 12G**  
 BAR-E-L MAGNOLIA 105D

HF TIGER 5T  
**HF MISTRESS 98Y**  
 HF MISTRESS 6M

MUSGRAVE BIG SKY  
 DBRL 94T BRIDE 4W  
 BROOKING OPEN ROAD 4051  
 BAR-E-L MAGNOLIA 78Z  
 HF KODIAK 5R  
 HF ECHO 84R  
 GREENS PREMIUM 7578  
 EXAR MISTRESS 9481

Act BW	82
Adj WW	702
Adj YW	958
ADG	1.60

BW	2.5
WW	59
YW	98
CED	3.0
CEM	9.0
Milk	22
CW	-
MARB	-
REA	-
FAT	-

Mistress 75J combines four top cow families from two different herds. At Bar-E-L Angus, the Magnolia and the Bride cow families have certainly gained their stripes in a very "female strong" cow herd! And at Hamilton Farms, Echo and Mistress will certainly not play second fiddle to any cow family they are put up against. Mistress 98Y is designated an Elite Dam in the Canadian Angus Assoc. and has a Platinum rating in our Herdtrax ratings. Mistress 75J has a number of maternal siblings sold throughout Canada and the USA in the \$10,000.00 range. When you analyse the picture of Mistress 75J, she commands your undivided attention; long bodied, deep ribbed, smooth made with lovely extension through her front end and to top it off, great hair and a pretty, pretty head. I will let you analyse her for yourself.

The only person you should try to be better than is the person you were yesterday.



Dam, HF Rosebud 63E, sold to Grand River Angus \$14,000



Maternal brother, HF Silver Star 224H, sold to Tower Cattle for \$5,000

**105J** Female • HAMI 105J • January 21 2021 • #2207956

**HF ROSEBUD 105J**

SITZ STELLAR 726D  
**SITZ PROFOUND 680G**  
 SITZ EPPONIA 223C

BSF HOT LOTTO 1401  
**HF ROSEBUD 63E**  
 HF ROSEBUD 36A

MOHNEN SUBSTANTIAL 272  
 SITZ PRIDE 200B OSF  
 SITZ UPWARD 9873  
 SITZ EPPONIA 31Z  
 BARSTOW CASH  
 BSF PRINCESS EL CAP  
 HF REBEL 53Y  
 HF ROSEBUD 98P

Act BW	79
Adj WW	743
Adj YW	1058
ADG	1.97

BW	2.6
WW	76
YW	136
CED	1.0
CEM	6.0
Milk	24
CW	49
MARB	0.46
REA	0.47
FAT	0.022

This very angular female excels in truly relevant traits such as weaning and yearling weights which are in the top 1 and 2%. Sitz Profound, our new and upcoming herdsire stamps his females, they are soggy made, strong topped, have nice muscle shape with great feet and legs and proud Angus demeanor. Profound's sire, Sitz Stellar has certainly impacted the Angus world with his outstanding foot quality, fertility, and function and to top it off, Stellar's dam has an impeccable udder! We have used Profound extensively on heifers with remarkable success and yet they certainly can tip the scales in the fall as well. Profound himself is in the top 1 & 2% of the breed in foot quality which is an ideal place to start when building a great angus cow.

The Rosebud cow family as I may have mentioned earlier has been in our herd since the beginning of Hamilton Farms and I do not believe it will lose its notoriety anytime soon.

- ✓ Access to 150+ cardlock locations in Canada
- ✓ Customizable programs with competitive pricing
- ✓ Bulk fuel delivery direct to your yard or job site
- ✓ Realtime tank monitoring
- ✓ Wheel-to-wheel on-site fuel delivery
- ✓ Bulk and packaged lubricants
- ✓ Fuel tanks and supplies

*Thank You..*  
 for co-sponsoring our sale  
 hospitality it is greatly appreciated.

www.fuelingrelationships.ca  
 6811 – 52<sup>nd</sup> St. SE, Calgary, AB, T2C 4J5 | 403.531.5700  
 "Fueling Relationships with Responsible Service"



Maternal sister, HF Black Lady 6G, sold to Grand River Angus \$19,000



Maternal brother, HF Tiger 157Z, sold to East & West Ranching \$7,000

## 124J

Female • HAMI 124J • January 23 2021 • #2207970

### HF BLACK LADY 124J

SITZ STELLAR 726D  
**SITZ PROFOUND 680G**  
 SITZ EPPONIA 223C

MOHNEN SUBSTANTIAL 272  
 SITZ PRIDE 200B OSF  
 SITZ UPWARD 9873  
 SITZ EPPONIA 31Z  
 S A V 004 PREDOMINANT 4438  
 HF TIBBIE 100M  
 KBJ MAXER 447M  
 WINDOVER BLACK LADY 19L

Act BW	70
Adj WW	682
Adj YW	1071
ADG	2.43

BW	2.0
WW	65
YW	118
CED	2.0
CEM	6.0
Milk	23
CW	38
MARB	0.29
REA	0.46
FAT	0.002

HF HEMI 151T  
**HF BLACK LADY 136W**  
 WINDOVER BLACK LADY 37P

Blacklady 124J is one of only two Profound females in the sale but is similar to lot 105J in her overall makeup. She is very solid, pretty tough to pick holes in this gal. Black Lady 136W is a 2009 model (13 yrs old) and still going strong. She has been a well-oiled machine in our herd over the years, bringing home a stellar calf every season never missing a beat! A high seller going to Grand River Angus in 2020 for over \$19,000.00 has made her way to the donor pen recently. Black Lady 136W has an excellent udder, great feet, super amount of capacity and to top it off is designated as an Elite Dam in the Canadian Angus Assoc. Combined with Sitz Profound, the maternal power should be over the top impressive!

## 127J

Female • HAMI 127J • January 23 2021 • #2207972

### HF TIBBIE 127J

MAY-WAY BREAKOUT 1310  
**HF ALCATRAZ 60F**  
 HF MAYFLOWER 191Z  
 RING CREEK BURL IVES 88Y  
**HF TIBBIE 36B**  
 HF TIBBIE 284U

AVF BREAKOUT 5409  
 MAY-WAY LADY BANDO 086  
 HF TIGER 5T  
 HF MAYFLOWER 78P  
 RING CREEK BARDOLENE 69W  
 HEATHER OF RING CREEK 447W  
 HF KODIAK 5R  
 HF TIBBIE 90N

Act BW	78
Adj WW	626
Adj YW	946
ADG	2.00

EPD	BW	WW	YW	CED	CEM	Milk	CW	MARB	REA	FAT
	1.2	42	76	5.0	3.0	29	29	0.39	0.60	0.011



Tibbie 127J is an attractive Alcatraz daughter out of a cow that was purchased by the Pastink family or Henria Holsteins in 2015 through the Angus Collection Sale for \$20,000.00. Tibbie 36B has placed bulls into very reputable commercial herds like T&B Harty and Jenkins Lazy U for \$9,000.00 and \$9,500.00, respectively. The Alcatraz progeny are known for their great hair, muscle shape and superior foot quality and 127J displays all of the above mentioned.



174J Female • HAMI 174J • January 28 2021 • #2208007

**HF ANNIE K 174J**

CUDLOBE DOUBLE VISION 16D	AVF BREAKOUT 5409	Act BW 83
<b>CUDLOBE DOUBLE STEP 54F</b>	MAY-WAY LADY BANDO 086	Adj WW 607
CUDLOBE ENCHANTRESS 73A	HF TIGER 5T	Adj YW 948
HF KODIAK 5R	HF MAYFLOWER 78P	ADG 2.13
<b>HF ANNIE K 28Z</b>	SANDY BAR ADVANTAGE 43M	
2HR ANNIE 11S	WILBAR RUBY 955N	
	LEACHMAN RIGHT TIME	
	DOUBLE AA ANNIE K 291'98	

EPD	BW	WW	YW	CED	CEM	Milk	CW	MARB	REA	FAT
	2.0	50	88	5.0	10.0	22	46	0.62	0.42	0.005

Annie K is a pretty common name when talking about the prominent cow families, both at Hamilton Farms and around the country. Annie K 28Z has produced females that have gone to Bruhn Angus in Iowa for \$8,000.00, Dynasty Angus for \$11,750.00 and bulls to Leedale Farming and Gurney Land & Livestock for \$14,500.00. Cudlobe Double Step was a high seller in Cudlobe Sale 2019. Note his marbling score at +0.92 which has carried through his daughter 174J with a marbling EPD of +0.62. She has posted a nicely balanced set of numbers if carcass values are of interest to you.



Maternal sister, HF Annie 93H, sold to Anchorage Farms for \$ 11,500



Maternal brother, HF Control Panel 72E, sold to Bull Pound Ranch for \$10,000

181J Female • HAMI 181J • January 29 2021 • #2208011

**HF ANNIE 181J**

SCHIEFELBEIN ATTRACTIVE 4565	JMB TRACTION 292	Act BW 65
<b>SCHIEFELBEIN SHOWMAN 338</b>	FROSTY ANSWER 3979	Adj WW 682
FROSTY ELBA 3745	S A V RENOWN 3439	Adj YW 975
WK SMOOTH 2382 DDF	FROSTY UPWARD 1100	ADG 1.83
<b>HF ANNIE 193C</b>	SYDGEN DOC 9017	
HF ANNIE 212Y	THOENE IN FOCUS 763	
	HF SWAGGER 75W	
	HF ANNIE 82W	

BW	-1.6
WW	61
YW	114
CED	9.5
CEM	11.0
Milk	22
CW	44
MARB	0.31
REA	0.68
FAT	-0.018

HF Annie 181J posts a very moderate birth weight and a Birth EPD -1.6, with a substantial spread to Yearling weight at +114, which equates to calving ease with explosive performance. The Showman females all display such elegant female characteristics combined with stoutness, length of body and powerful hip. The udders in the Annie cow family are tough to beat. If this female is like her dam, you will quickly see a return on your investment. Her first calf sold to Bull Pound Ranch for \$10,000.00 and a heifer calf sired by Alcatraz sold to Anchorage Farms in 2020 for \$11,500.00. Possibly a prospect for a junior down the road as well!

How long are you going to wait before you demand the best for yourself?

**208J**

Female • HAMI 208J • February 01 2021 • #2208028

**HF ROSEBUD 208J**

HF SYNDICATE 213Z  
**HF NEGOTIATOR 280C**  
 HF BETTY 164W

CONNEALY CONSENSUS 7229  
 HF MISS BLACKCAP 27R  
 HF TIGER 5T  
 HF BETTY 115G  
 RING CREEK BARDOLENE 69W  
 HEATHER OF RING CREEK 447W  
 S A V 004 PREDOMINANT 4438  
 HF ROSEBUD 81L

Act BW	70
Adj WW	606
Adj YW	905
ADG	1.87

RING CREEK BURL IVES 88Y  
**HF ROSEBUD 54A**  
 HF ROSEBUD 19U

EPD	BW	WW	YW	CED	CEM	Milk	CW	MARB	REA	FAT
	-0.2	34	64	12.0	10.0	18	17	0.17	0.50	0.008



This moderate framed beauty is as deep through the heart girth as she is through the flank, straight in her lines, soft made with a lovely Angus head and plum hairy!! Sired by Negotiator (x Syndicate 213Z) and Tiger on the top side of the pedigree, calving ease is definitely a big plus. The paternal dam, HF Betty 164W was a donor and a fan favorite at Hamilton Farms, with an impeccable udder, and amazing disposition. As we have come to realize over the years, the Rosebuds seem to perform like the "energizer bunny," they just go and go; longevity is certainly one of their stronger attributes. A very docile heifer for a junior project.

**221J**

Female • HAMI 221J • February 05 2021 • #2208037

**HF BARDELLA 221J**

SCHIEFELBEIN ATTRACTIVE 4565  
**SCHIEFELBEIN SHOWMAN 338**  
 FROSTY ELBA 3745

JMB TRACTION 292  
 FROSTY ANSWER 3979  
 S A V RENOWN 3439  
 FROSTY UPWARD 1100  
 HF THUNDERBIRD 146Y  
 MVF ROSEBUD 313U  
 S A V ANGUS BEEF 3231  
 ANNA'S BARDELLA 1Z

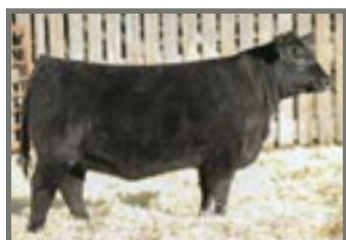
Act BW	76
Adj WW	689
Adj YW	993
ADG	1.90

PM THUNDERSTRUCK 22'13  
**BLAIR'S BARDELLA 803F**  
 PERROT BARDELLA 12C

EPD	BW	WW	YW	CED	CEM	Milk	CW	MARB	REA	FAT
	1.2	65	118	5.0	8.0	24	45	0.19	0.70	-0.010



These Showman females are extra deep ribbed, great muscle shape, super attractive front third, with solid feet and leg structure, and great hair to complete the package. Hamilton Farms has focused maternal traits, whether the traits are measured with EPD's or the immeasurable components of maternal function where we use the old school way of evaluating cattle with your eye or as some say "Cowboy Logic." The dam of Bardella 221J was purchased at the Power & Perfection Sale 2019 with Mac Oberle, Circle 7 Ranch and consigned by Blair Ag Cattle Co. Bardella 303F is a moderate framed female with tremendous spring of rib, extra muscle expression and sound feet and her daughter Bardella 221J is definitely cut from the same cloth.



Maternal sister, HF Tibbie 125H, sold to Grand River Angus \$15,500

The biggest sire offering in the sale is by Schiefelbein Showman 338 and if you study the pictures, he has a definite stamp to the phenotype of his progeny. For the extreme massiveness and muscle design he carries with him, his females are extremely feminine in their phenotype, stout made, big hipped, elegant fronted with great hair and natural fleshing ability. Tibbie 242Z has a great udder and is very sound footed which results in the production of calves that tip the scale and fill the pocketbook. A maternal sister to Tibbie 227J sold in 2021 to Grand River Angus for \$15,500.00 and a heifer calf went to Bruhn Angus in Iowa for \$7,500.00, just to mention a few.

**227J**

Female • HAMI 227J • February 07 2021 • #2208043

**HF TIBBIE 227J**

SCHIEFELBEIN ATTRACTIVE 4565  
**SCHIEFELBEIN SHOWMAN 338**  
 FROSTY ELBA 3745

JMB TRACTION 292  
 FROSTY ANSWER 3979  
 S A V RENOWN 3439  
 FROSTY UPWARD 1100  
 HF TIGER 5T  
 HF TIBBIE 86K  
 W C NORTHERN EDGE 0C04  
 HF TIBBIE 57D

Act BW	83
Adj WW	680
Adj YW	1064
ADG	2.40

HF TIGER 21X  
**HF TIBBIE 242Z**  
 HF TIBBIE 78M

BW	2.9
WW	66
YW	119
CED	0.0
CEM	6.0
Milk	23
CW	46
MARB	0.27
REA	0.67
FAT	-0.011

So it turns out that being an adult is really just Googling how to do stuff.



**228J** Female • HAMI 228J • February 07 2021 • #2208044

**HF ERICA 228J**

SCHIEFELBEIN ATTRACTIVE 4565	JMB TRACTION 292
<b>SCHIEFELBEIN SHOWMAN 338</b>	FROSTY ANSWER 3979
FROSTY ELBA 3745	S A V RENOWN 3439
	FROSTY UPWARD 1100
BAR-H CROSSFIRE 63A	S TITLST 1145
<b>HF ERICA 207F</b>	HF TIBBIE 93U
HF ERICA 256D	PLEASANT VALLEY LUTE 1207
	HF ERICA 317Z

Act BW	80
Adj WW	855
Adj YW	1212
ADG	2.23

BW	1.4
WW	85
YW	150
CED	5.0
CEM	9.0
Milk	25
CW	45
MARB	0.21
REA	0.62
FAT	0.019



Maternal brother, HF Clean Run 205H



Maternal grand sire, Bar-H Crossfire 63C

This Showman female is exceptional, both on paper and in person. This Erica female will definitely create some buzz for those searching for their next great one. She will lead the way with what we think is as good a group of females as we have ever offered from top to bottom, but she just naturally rises to the top or very close to it! Erica 228J is just as impressive in the pen as she is in her picture. The power and mass, the depth of body and still the style and femininity are uncanny! Erica 228J indexed 124 at weaning and 114 at yearling, ranking in the top 1% of the breed for WW and YW, with a 1.4 Birth EPD. Do take the time to find her in the pen, you won't regret it!

*Thank You..*

to Nutrien Ag Solutions, Crossfield for co-sponsoring our sale hospitality it is greatly appreciated.



**Nutrien**  
Ag Solutions™

**SHANNON KACHUR**

Branch Manager  
T 403.946.4588  
C 403.336.3148  
F 403.946.4560  
shannon.kachur@nutrien.com



Dam, HF Miss Blackcap 261E, sold to Stewart Cattle Company for \$6,500



Full sister to grand dam, HF Blackcap 228B

**233J**

Female • HAMI 233J • February 08 2021 • #2208048

**HF MISS BLACKCAP 233J**

SCHIEFELBEIN ATTRACTIVE 4565  
**SCHIEFELBEIN SHOWMAN 338**  
 FROSTY ELBA 3745

MUSGRAVE BIG SKY  
**HF MISS BLACKCAP 261E**  
 HF MISS BLACKCAP 258B

JMB TRACTION 292  
 FROSTY ANSWER 3979  
 S A V RENOWN 3439  
 FROSTY UPWARD 1100  
 CONNEALY EARNAN 076E  
 SAV PRIMROSE 7861  
 PLEASANT VALLEY LUTE 1207  
 HF MISS BLACKCAP 27R

Act BW	75
Adj WW	736
Adj YW	1125
ADG	2.43

BW	1.1
WW	73
YW	128
CED	9.0
CEM	12.0
Milk	22
CW	41
MARB	0.44
REA	0.65
FAT	-0.001

Wow! Stop the bus and take a good long look at this princess! Yet another female from the infamous Showman collection. She is not only a unique specimen to view in person, Miss Blackcap pairs that with a very balanced EPD profile. Again, like the Showman cattle are, they are very moderate at birth and explosive growth and power at weaning and yearling. Extremely deep bodied in her make up, sweet fronted, powerful muscle expression and great feet and legs. I think I may be repeating myself! The Miss Blackcap cow family has been one of the most amazing families in terms of dollars sold at Hamilton Farms. The dam, Miss Blackcap 261E has had females go into herds like Rio Grande Angus and bobcat Angus in Montana.

The first Showman females have calved now, and all reports are very positive! Look at the teat placement on this female, couldn't be better. We truly believe she is special, what are your thoughts?



Rod making sure the branding crew at the chute ahead knew that they were holding him up!

I'm in shape. Round is a shape.



**235J** Female • HAMI 235J • February 08 2021 • #2208050

**HF MISS BLACKCAP 235J**

SCHIEFELBEIN ATTRACTIVE 4565  
**SCHIEFELBEIN SHOWMAN 338**  
 FROSTY ELBA 3745

PLEASANT VALLEY LUTE 1207  
**HF MISS BLACKCAP 258B**  
 HF MISS BLACKCAP 27R

JMB TRACTION 292  
 FROSTY ANSWER 3979  
 S A V RENOWN 3439  
 FROSTY UPWARD 1100  
 PLAINVIEW LUTTON E102  
 CHERRY KNOLL ELSA 8014  
 TC FREEDOM 104 DMF  
 HF MISS BLACKCAP 50N

Act BW	82
Adj WW	697
Adj YW	1060
ADG	2.27

BW	1.8
WW	67
YW	120
CED	7.0
CEM	9.0
Milk	22
CW	43
MARB	0.34
REA	0.66
FAT	-0.005



Maternal sister, HF Miss Black Cap 45D, sold to Leslie Pelletier \$11,000



Maternal granddaughter, HF Miss Blackcap 147F, sold to JK Fraser & Compass Ranch \$15,000

Miss Blackcap 235J's dam is also the granddam of Miss Blackcap 233J and both sired by Showman, closely related and pretty much two peas in a pod phenotypically and in their performance profile. Miss Blackcap 235J is a "Feature" and a poster girl as many of the Blackcap females would rank. It is hard to put it all into words what this cow family has done over the years to increase the value and quality in our herd. A full sibling to the dam (258B) sold in the Hamilton Farms Sale 2016 for \$35,000.00 to Grand River Angus. The granddam to 235J, Miss Blackcap 27R has more in her repertoire than I have time to write, and you have time to read! The consistency is there, if you want a Showman female, this might just be the one for you!



**240J** Female • HAMI 240J • February 10 2021 • #2208053

**HF MISS BLACKCAP 240J**

SCHIEFELBEIN ATTRACTIVE 4565  
**SCHIEFELBEIN SHOWMAN 338**  
 FROSTY ELBA 3745

MUSGRAVE BIG SKY  
**HF MISS BLACKCAP 75F**  
 HF MISS BLACKCAP 296Y

JMB TRACTION 292  
 FROSTY ANSWER 3979  
 S A V RENOWN 3439  
 FROSTY UPWARD 1100  
 CONNEALY EARNAN 076E  
 SAV PRIMROSE 7861  
 HF TIGER 5T AMF  
 HF MISS BLACKCAP 27R

Act BW	73
Adj WW	723
Adj YW	1091
ADG	2.30

EPD	BW	WW	YW	CED	CEM	Milk	CW	MARB	REA	FAT
	1.4	78	138	9.0	11.0	25	53	0.24	0.77	-0.021

Miss Blackcap 240J, another Showman sired female with that relentless eye appeal and extra volume and in this case, a tick larger framed than her pen mates. A full brother sold to Granum Colony last year for \$10,000.00. Sam has a keen eye for picking out the good ones! Blackcap 240J indexed 113 at weaning and 106 at yearling and if you like numbers, note her low BW +1.4 and impressive WW +78, and YW +138. She has a nicely balanced set of numbers right across the board. Miss Blackcap 75F was purchased through our sale in 2019 for \$11,000.00 and has almost matched her return on investment with her first calf, with a full brother to 240J that sold to Granum Colony. She has great feet and udder and should be around for years to come. If you prefer a little more size and performance, 240J is the one to make note of.

If there are no stupid questions, then what kind of questions do stupid people ask? Do they get smart just in time to ask questions?



**242J** Female • HAMI 242J • February 10 2021 • #2208055

**HF PRINCESS 242J**

MUSGRAVE BIG SKY	CONNEALY EARNAN 076E	Act BW 82
<b>HF STORM CENTER 26D</b>	SAV PRIMROSE 7861	Adj WW 664
HF MISS BLACKCAP 296Y	HF TIGER 5T	Adj YW 973
	HF MISS BLACKCAP 27R	ADG 1.93
HF TIGER 5T	HF KODIAK 5R	
<b>MARSTON PRINCESS 2Z</b>	HF ECHO 84R	
EXAR QUEEN B 0767	RITO 6EM3 OF 4L1 EMBLAZON	
	LIMESTONE QUEEN B R266	

EPD	BW	WW	YW	CED	CEM	Milk	CW	MARB	REA	FAT
	1.0	48	87	9.0	10.0	26	32	0.37	0.47	0.035



This moderate framed "princess" is indeed just as her name indicates. Princess is sired by the \$35,000.00 high selling HF Storm Center 26D, who we have renamed our female builder. This female has the phenotype and pedigree to conform into a core producer in the herd. Note the Tiger influence top and bottom in the pedigree, so udder quality should be a given.

Princess 2Z has had progeny go into herds like Teepee Ranch, WA, Foster Cattle LLC in Idaho, Jenkins Lazy U, Leedale Farming, Rio Grande Angus, Moos Farms and McGowan Farms, all very reputable operations.

**245J** Female • HAMI 245J • February 11 2021 • #2208057

**HF BLACKLADY 245J**

MUSGRAVE BIG SKY	CONNEALY EARNAN 076E	Act BW 85
<b>HF STORM CENTER 26D</b>	SAV PRIMROSE 7861	Adj WW 686
HF MISS BLACKCAP 296Y	HF TIGER 5T	Adj YW 980
	HF MISS BLACKCAP 27R	ADG 1.83
HF SWAGGER 75W	HF TIGER 5T	
<b>HF BLACKLADY 142Y</b>	HF MISS BLACKCAP 27R	
WINDOVER BLACK LADY 37P	KBJ MAXER 447M	
	WINDOVER BLACK LADY 19L	

EPD	BW	WW	YW	CED	CEM	Milk	CW	MARB	REA	FAT
	2.4	51	88	6.0	7.0	23	22	0.45	0.43	0.017



Blacklady 245J is a long bodied female with a lot of mass and depth through her heart and width over her top. Two maternal brothers sold through Hamilton Farms Sale to Bull Pound Ranch and Diamond 7 Ranch and a female to Ring Creek Farm.

HF Storm Center 26D sold through our Sale in 2017 to Sun Rise Simmental and Darren Clifford for \$35,000.00. We were able to purchase half of him back 3 years ago and have used him naturally in the cow herd. He really shines when it comes to his daughters. We would expect great things from this Storm Center daughter, especially combining the Swagger influence on the bottom side of the pedigree.

**275J** Female • HAMI 275J • February 21 2021 • #2208076

**HF ECHO 275J**

SCHIEFELBEIN ATTRACTIVE 4565	JMB TRACTION 292	Act BW 75
<b>SCHIEFELBEIN SHOWMAN 338</b>	FROSTY ANSWER 3979	Adj WW 691
FROSTY ELBA 3745	S A V RENOWN 3439	Adj YW 984
	FROSTY UPWARD 1100	ADG 1.83
MAY-WAY BREAKOUT 1310	AVF BREAKOUT 5409	
<b>HF ECHO 279E</b>	MAY-WAY LADY BANDO 086	
HF ECHO 279X	HF KODIAK 5R	
	HF ECHO 167R	

EPD	BW	WW	YW	CED	CEM	Milk	CW	MARB	REA	FAT
	1.1	66	121	7.0	9.0	28	52	0.37	0.71	0.002



Another Showman female up for grabs with a great Echo family on the bottom side of the pedigree. A wedge shaped, easy fleshing female with feminine characteristics are a definite when it comes to selecting replacements and the Showman females seem to check all the boxes.

The dam of 275J, Echo 279E is a beautifully designed cow, sorta how you would draw the "ideal cow". With perfect feet and a great udder, we are definitely off to a great start. Her first calf, a bull sold to Bull Pound Ranch for \$8,000.00. The granddam of Echo 275J is Echo 279X, an Elite Dam in the Canadian Angus Assoc., ten calves with Avg Ratio 108.

Make sure you look this heifer up sale day. I'm trying to keep Brenda from retiring, so maybe if she gets excited about this cattle business, she'll stick around! Yes, this heifer belongs to Brenda.



**278J** Female • HAMI 278J • February 23 2021 • #2208078

**HF TIBBIE 278J**

SCHIEFELBEIN ATTRACTIVE 4565  
**SCHIEFELBEIN SHOWMAN 338**  
 FROSTY ELBA 3745

PLEASANT VALLEY LUTE 1207  
**HF TIBBIE 316B**  
 HF TIBBIE 70X

JMB TRACTION 292  
 FROSTY ANSWER 3979  
 S A V RENOWN 3439  
 FROSTY UPWARD 1100  
 PLAINVIEW LUTTON E102  
 CHERRY KNOLL ELSA 8014  
 HF TIGER 5T  
 HF TIBBIE 91P

Act BW	70
Adj WW	729
Adj YW	1022
ADG	1.83

BW	0.1
WW	66
YW	119
CED	8.0
CEM	10.0
Milk	27
CW	53
MARB	0.32
REA	0.80
FAT	-0.018

Another Tibbie x Showman combination and yet another "Feature"! The dam of 278J, HF Tibbie 316B sold in the Hamilton Farms Sale 2016 to Grand River Angus for \$26,000.00 and she is the kind of cow you would love to fill your pastures with. Tibbie 278J is a huge bodied, powerfully structured individual with a nicely balanced trait package to help your operation raise the bar and excel in all areas of profitability. This young female could even make her way down the road to your donor pen, she has the "look" and the pedigree to take her there. Showman milking females have certainly fulfilled our expectations, the final piece to the puzzle has been completed! We can move forward with confidence.



Dam, HF Tibbie 316B, sold to Grand River Angus for \$26,000



Maternal sister to dam, HF Tibbie 101Z



**279J** Female • HAMI 279J • February 23 2021 • #2208079

**HF MISS BLACKCAP 279J**

SCHIEFELBEIN ATTRACTIVE 4565  
**SCHIEFELBEIN SHOWMAN 338**  
 FROSTY ELBA 3745

HA COWBOY UP 5405  
**HF MISS BLACKCAP 140E**  
 HF MISS BLACKCAP 296Y

JMB TRACTION 292  
 FROSTY ANSWER 3979  
 S A V RENOWN 3439  
 FROSTY UPWARD 1100  
 HA OUTSIDE 3008  
 HA BLACKCAP LADY 1602  
 HF TIGER 5T  
 HF MISS BLACKCAP 27R

Act BW	80
Adj WW	723
Adj YW	1032
ADG	1.93

EPD	BW	WW	YW	CED	CEM	Milk	CW	MARB	REA	FAT
	2.1	77	140	7.0	6.0	25	54	0.19	0.71	-0.032

Blackcap 279J is the mirror image of her dam with mama cow written all over her! The dam of Blackcap 279J has a repertoire of high end, high dollar cattle worth mentioning. Six full brothers to Miss Blackcap 140E averaged \$15,500.00 going into herds like Parkview Farms, East & West Ranching, Bull Pound Ranch, Chico Ranches, Koots Cattle Co and Hextall Livestock and a full sister sold to Nelson Ranch for \$18,000.00. The repeatability in the cow line is amazing. Again, I will also mention the consistency of the Showman bred cattle. They possess so much depth, width and length with a nicely balanced set of numbers. This is a great opportunity to take home a Showman female, you will be a step ahead of purchasing semen and a lot of the marketing has been done! Don't miss out.

Failure is the condiment that gives success its flavor.



Maternal grand dam, HF Miss Black Cap 220C



Maternal brother to dam, HF Quick  
 Draw 145G, sold to 3G Cattle & Roe Livestock

**289J** Female • HAMI 289J • February 27 2021 • #2208088

**HF MISS BLACKCAP 289J**

JINDRA ACCLAIM  
**JCH J&K ACCLAIM 9013**  
 JCH J&K POLLY 7604

MUSGRAVE 316 STUNNER  
**HF MISS BLACKCAP 85G**  
 HF MISS BLACKCAP 220C

JINDRA 3RD DIMENSION  
 JINDRA BLACKBIRD LASSY 1111  
 S CHISUM 255  
 JCH J&K POLLY 5665  
 LD CAPITALIST 316  
 MCATL BLACKBIRD 831-1378  
 PLEASANT VALLEY LUTE 1207  
 MISS BLACKCAP 27R

Act BW	85
Adj WW	791
Adj YW	1106
ADG	1.97

BW	3.5
WW	77
YW	135
CED	0.0
CEM	5.0
Milk	29
CW	73
MARB	0.43
REA	0.52
FAT	0.031

Another Miss Blackcap female but with a different twist to the top of the pedigree on the dam's side and the sire of Miss Blackcap 289J. Here is a younger female with impressive performance indexing 112 at weaning. Her dam is a direct daughter of Musgrave 316 Stunner and going back to the iconic Miss Blackcap 27R on the bottom. Blackcap 289J is an extremely deep bodied individual with a lovely front end that blends in very nicely. A full brother to HF Blackcap 85G sold to Roe Livestock and 3G Cattle Ventures for \$16,000.00 in 2020. The granddam of Miss Blackcap 289J is Miss Blackcap 220C who sold through our Hamilton Farms Sale in 2016 for \$35,000.00 The Jindra Acclaim son is an outcross in our herd so if you are looking for something totally different, she is your choice.

**292J** Female • HAMI 292J • March 02 2021 • #2208091

**HF MISTY'S VALENTINE 292J**

SCHIEFELBEIN ATTRACTIVE 4565  
**SCHIEFELBEIN SHOWMAN 338**  
 FROSTY ELBA 3745

HF STORM CENTER 26D  
**HF MISTY'S VALENTINE 99F**  
 HF MISTY'S VALENTINE 254X

JMB TRACTION 292  
 FROSTY ANSWER 3979  
 S A V RENOWN 3439  
 FROSTY UPWARD 1100  
 MUSGRAVE BIG SKY  
 HF MISS BLACKCAP 296Y  
 SOUTHLAND EXCLUSIVE 62U  
 2HR MISTY'S VALENTINE 13R

Act BW	79
Adj WW	728
Adj YW	1048
ADG	2.00



EPD	BW	WW	YW	CED	CEM	Milk	CW	MARB	REA	FAT
	2.3	70	125	2.0	8.0	24	45	0.28	0.87	-0.031

Another Showman heifer and when they say "the apple doesn't fall far from the tree" this certainly is the case! HF Misty's Valentine 99F, sired by Storm Center, who we pride in building great females, displays depth of body and rib capacity, a very attractive head and front end and supper udder development and foot structure to complete the package of a true functioning maternal machine. A maternal sister was sold in the Hamilton Farms Sale 2021 to Foster Cattle LLC, Idaho. Misty's Valentine 292J indexed 104 at Weaning and 102 at Yearling with a nicely balanced set of numbers across the board.

Whatever you are, be a good one.



**302J**

Female • HAMI 302J • March 14 2021 • #2208101

**HF ANNIE 302J**

POSS ELEMENT 215 65  
**BARTELS ELEMENT 1028 651**  
 BLACK LOU 6040 1028 BARTELS

BSF HOT LOTTO 1401  
**HF ANNIE 10E**  
 HF ANNIE 212Y

POSS EASY IMPACT 0119  
 POSS ERICA 004  
 CONNEALY REFLECTION  
 MS MCK BLACK ALLIANCE 6040  
 BARSTOW CASH DDF  
 BSF PRINCESS EL CAP W2  
 HF SWAGGER 75W  
 HF ANNIE 82W

Act BW	73
Adj WW	711
Adj YW	1031
ADG	2.00

EPD	BW	WW	YW	CE	CEM	Milk	CW	MARB	REA	FAT
0.9	67	111	10.0	14.0	24	45	0.41	0.52	0.018	

Annie 302J is just a middle of March baby indexing 104 at Weaning and posting a 1031 lbs Adj 365 day Wt. Her dam Annie 10E is the granddam of Feature Bull Lot 92J out of a 2 yr old dam, pretty impressive stats on this Alcatraz son. The granddam of Annie 302J has two other sisters retained in the herd and her great granddam is an Elite/Premier Dam with 4 calves average ratio 106. Bartels Element has been used in the past to run with the heifers after AI'ing, so calving ease would certainly be one of his attributes along with foot quality and scrotal size. This heifer could certainly run with the big dogs down the road, don't discount her on her age.



**307J**

Female • HAMI 307J • March 26 2021 • #2208106

**HF ROSEBUD 307J**

SCHIEFELBEIN ATTRACTIVE 4565  
**SCHIEFELBEIN SHOWMAN 338**  
 FROSTY ELBA 3745

HA COWBOY UP 5405  
**HF ROSEBUD 157E**  
 HF ROSEBUD 3Y

JMB TRACTION 292  
 FROSTY ANSWER 3979  
 S A V RENOWN 3439  
 FROSTY UPWARD 1100  
 HA OUTSIDE 3008  
 HA BLACKCAP LADY 1602  
 HF DONE RIGHT 125R  
 HF ROSEBUD 153W

Act BW	80
Adj WW	693
Adj YW	1082
ADG	2.43

BW	1.5
WW	73
YW	130
CE	7.0
CEM	9.0
Milk	24
CW	54
MARB	0.20
REA	0.74
FAT	-0.012



Maternal brother to dam, HF Rebellion 148C, sold to Malinda Good \$16,000



Maternal sister to dam, HF Rosebud 181D, sold to Lewis Farms for \$11,000

Rosebud 307J is the youngest heifer in the sale offering, but don't let her age fool you. She has all the tools to mature into an attractive, deep bodied, sweet fronted female that roams your front pastures and could certainly go knocking on the gate of the donor pen!

Her dam, Rosebud 157E could be the deepest bodied cow we own, which is common with the Cowboy Up females. Her granddam was certainly a producer with progeny bringing from \$6,000.00 to \$16,000.00 consistently. Rosebud 157E's first calf sold was a heifer gathering \$8,500.00 going to Grand River Angus.

Common to the Showman progeny, the spread from BW EPD to WW and YW is very impressive! Start moderate and don't look back!!

Don't wait, the time will never be just right.

# BULL POUND RANCH

## 50 FIRST CUT COMMERCIAL REPLACEMENT OPEN HEIFERS

We are proud to host Brent and Kate Horner from Bull Pound Ranch with their offering of 50 high end, first cut open heifers. This will be a tremendous opportunity to acquire some of the fanciest breeding heifers you will come across. These heifers have not been pampered... coming to you straight from the Alberta Special Areas short grass country. When Brent and Kate visited with us about the potential to offer some commercial replacement heifers, they knew right from the beginning, that they wanted to offer the top sort. These heifers were hand selected from a group of 125 head. Brent and Kate have been purchasing high quality bulls from Hamilton Farms for over 12 years and these replacement heifers are 100% sired by HF bulls. The quality runs deep in this set of heifers and they will be sold in groups of five, with the high bidder having option to take as many groups as they want. These heifers are currently being developed at the Horner ranch and can be viewed anytime before March 30/2022. The heifers will NOT be present and available for viewing on sale day but there will be quality video of the heifers available. The heifers will sell by video auction.



For more information on these heifers give Brent or Kate a call.  
Brent Horner 403-633-0581 • Kate Horner 403-501-8595

### *Terms & Conditions*

**TERMS OF SALE:** Are cash or cheque at par, payable to Clerks of the sale on Sale Day. U.S. Funds will be accepted at the current rate of exchange. No release will be given until satisfactory settlement has been made. We reserve the right to withhold animals from export shipment for whom payments have not been received prior to departure times.

**ALL PERSONS:** who attend the sale do so at their own risk, and the owners, and sale staff assume no liability, legal or otherwise, for property loss or for any accidents that may occur.

**ANNOUNCEMENTS:** Errors discovered in the catalogue will be corrected by the announcements from the auction stand at sale time and such corrections will take precedence over the printed material in the catalogue.

**CATTLE INSPECTION:** All carry permanent identity tags, corresponding to Sale Lot Numbers. All shall be available for inspection prior to sale.

**ALL CATTLE ARE SOLD:** Subject to such tests as required for export under regulations of health of animals Branch, Department of Agriculture for Canada - those corresponding to Bureau of Animal Industry requirements.

**BREEDING GUARANTEE:** All cattle are sound and right, and all with a responsible breeder guarantee of satisfaction. In the event of any unlikely dispute, the regular terms and conditions, standard with the Canadian Angus Association shall apply.

**INSURANCE:** Ownership risk to purchaser commences when the Auctioneer's hammer falls. Livestock coverage will be available on sale day, from the sale management at any time.

Ability is what you're capable of doing. Motivation determines what you do. Attitude determines how well you do it.

A VERY SPECIAL THANKYOU TO ALL THE BUYERS WHO SUPPORTED OUR PROGRAM EVEN WHEN MANY COULDN'T EVEN BE THERE!

THANK YOU TO OUR 2021 CUSTOMERS AND SUPPORTERS

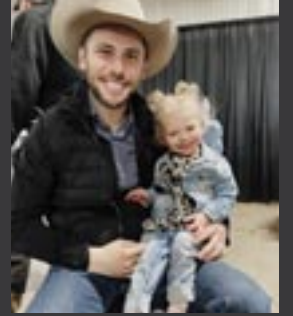




THANK YOU TO OUR 2021 CUSTOMERS AND SUPPORTERS

In every age 'the good old days' were a myth. No one ever thought they were good at the time. For every age has consisted of crises that seemed intolerable to the people who lived through them."

THANKFUL FOR OUR FAMILY & FRIENDS



FAN







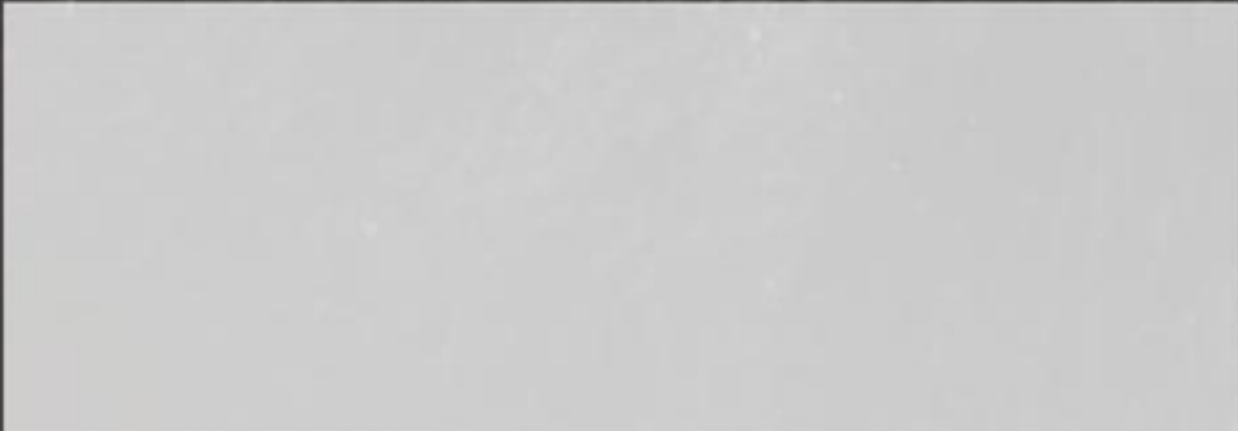
# FAMILY



THANKFUL FOR OUR FAMILY & FRIENDS

*Hamilton*  
FARMS

274132 Range Road 33  
Rockyview County, AB  
T4C 2Y2



Time Sensitive Material



[www.hamiltonfarms.ca](http://www.hamiltonfarms.ca)