

TARGETING THE NEEDS OF OUR CUSTOMERS!

# ON TARGET

19TH ANNUAL  
BULL & FEMALE SALE

TUESDAY MARCH 12, 2019 • 1:00 PM

BARRHEAD AG BARN, BARRHEAD, AB

SELLING **71** SIMMENTAL &  
ANGUS YEARLING BULLS  
& **10** SIMMENTAL &  
ANGUS OPEN HEIFERS  
THIS YEAR

- SIBL SIMMENTALS
- CINDER ANGUS
- DWAJO ANGUS



## BLI UPPER CLASS 846F

BLI 846F MARCH 14 2018 #PG1268536

LFE GOTHAM 819Y  
LFE THE RIDDLER 323B  
LFE BS CHARO 23Y  
**S: BLI DARK WHISKEY 659D**  
LFE DREAMING RED 503S  
LFE MS ARNOLD 609U  
MISS ARNOLD L2539

R PLUS RELOAD 2006Z  
R PLUS HITMAN 4194B  
MISS R PLUS 79X  
**D: BLI UPPER CLASS 647D**  
EMPEROR  
BLI UPPER CLASS 34U  
MS NORTHFORK 13J

BW	WW	YW	CE	MCE	MW	M
74	-	-	-	-	-	-
2.2	71.0	103.3	7.0	4.0	58.6	23.2

- The final bid in each round will denote the amount of that bidder's donation, eg.  
**Round 1** - Final Bid is \$300.00 to Randy Mitchell. Randy's donation is \$300.00.  
**Round 2** - Final bid is \$250.00 to Tom Jones. Tom's donation is \$250.00.  
**Round 3** - The female is re-auctioned on a downward scale until no further bids are received at the low of \$10.00
- Each \$10 purchase (donated) represents one chance in the final draw. eg. Randy Mitchell has 30 chances. Tom Jones has 25 chances and so on down the scale to the final \$10.00 donation worth one chance each.
- One ticket for every \$10.00 donated, bearing the contributor's name will be put into the draw barrel.
- At the end of the sale, one ticket will be drawn, with the person winning the heifer.

It is an honour to have the donation heifer this year and we have selected a female that represents our program well. Sired by our home raised Riddler son out of 609U and a first calving Hitman daughter that is a full sister to the 830F bull in the sale. A good honest female with a good temperament. Proceeds will donation for this year will be going to the Barrhead Health Care Center - Palliative Care; In memory of those we have lost or are battling cancer.

*Thanks again Barclay and Family*

**TAKE YOUR  
BULL HOME  
SALE DAY & RECEIVE  
\$100 OFF  
THE PURCHASE PRICE**

## OBI Welcome 2019

*It is once again with great pleasure to be working with the  
On Target Group to bring you there 2019 Bull & Female Sale*

It is with my pleasure to invite you to the 19th Annual On Target Bull and Female Sale. Yes this year Dwajo Angus and SIBL Simmentals are offering 11 open heifers from their herds in this year.

SIBL Simmentals have had a huge year this year with having a very successful Herd Reduction Sale in December and now the bulls from some of those cows that left the farm are on offer and what a set they are. They great hair coats, dispositions and thickness are some of the major features of these very impressive set of Simmental bulls.

Cinder Angus has also had a very good year with winning the Grand Champion Red Angus Female at the hardest show to win in Canada, Agribition. The powerful set of Red Angus cattle displayed by Cinder Angus this year shows their commitment in leading the country in some of the finest cattle out there. The bulls offered from Cinder Angus have thickness, good hair coats and very marketable.

Dwajo Angus continues year after year to promote their Angus herd at Farmfair, Northern Select, Red Round-Up and Lone Stone Female Sale. They bring the best to town and it sure did show this past year with High Sellers at the Northern Select and Red Round-Up. Dwajo bulls are offer a uniform set with great feet, longevity and thickness built in them.

This sale is very unique combining 3 breeds of cattle in one sale, options are there for their target group. The quality keeps getting higher and the demand of their bulls grows everywhere. They do market this sale and their own herd's very well and it shows in the interest they receive every year by going to all major shows and the local ones as well.

I am very familiar with all the herds involved in the On Target Sale so if you need any assistance before or on sale day, please do not hesitate to call me, anyone of the consignors or sales staff. We will be glad to help you.

**SEE YOU IN BARRHEAD, MARCH 12TH**

Mark Holowaychuk, OBI (403) 896-4990

Roger Peters, OBI (403) 828-9815

Taylor Kalbfleisch, OBI (780) 913-0908



## BUYERS DRAWS & EQUIPMENT USE

SPONSORED BY: DEERLINE SALES, BARRHEAD TD CANADA TRUST,  
MASTERFEEDS, PRODUCT FROM ZOETIS AND BARRHEAD  
TRANSIT MIX FROM BARN PREPARATION & CLEAN UP

## BUYERS DRAW 2019

THIS YEAR'S BUYER'S DRAW IS FOR THE MAYFIELD INN  
& DINNER THEATRE WITH HOTEL ACCOMMODATIONS.  
COURTESY OF THE ON TARGET GROUP.

## On Target Bull Guarantee

We guarantee to provide you with a sound, fertile bull capable of servicing cows. In the event that your bull is a non satisfactory breeder, the seller will not, under any circumstances, be responsible for more than the original selling price of any bull or female sold in the sale. The consignor will not provide replacement or credit for physical injury or mismanagement. Therefore we stress the importance of insurance on your bull. An insurance agent will be available sale day.

Note: Bulls can be wintered until April 15, 2019 at no charge but all bulls kept must be insured.



# TARGET

19TH ANNUAL **BULL** & **FEMALE** SALE

## OFFERING 81 LOTS:

32 Red Angus Bulls  
21 Black Angus Bulls  
18 Simmental Bulls  
7 Angus Open Heifers  
3 Simmental Open Heifers

**TUESDAY MARCH 12, 2019 • 1:00 PM**  
**BARRHEAD AG BARN, BARRHEAD, AB**  
**LUNCH AT NOON**

### SALES STAFF:

Steve Dorran, Auctioneer ..... 403-540-9498  
Craig Flewelling, Ringman ..... 403-556-0515  
Andrew Reedleder, Ringman ..... 403-848-1260  
Mark Holowaychuk, OBI ..... 403-896-4990  
Roger Peters, OBI ..... 403-828-9815  
Taylor Kalbfleisch, OBI ..... 780-913-0908  
Shane Castle, Castlerock Marketing ..... 306-741-7485

### DLMS

Mark Shologan ..... 780-699-5082

### INSURANCE

Monica Czech, CFI ..... 780-318-3636

### HOTEL ACCOMODATIONS

Barrhead Neighborhood Inn ..... 780-674-3300

**VIEW BULL VIDEOS ONLINE AT: [WWW.CATTLEVIDS.CA](http://WWW.CATTLEVIDS.CA)**  
**VIEW CATALOGUE ONLINE AT: [WWW.CATTLEMANAGEMENT.CA](http://WWW.CATTLEMANAGEMENT.CA)**

*On Target*  
Sale Group

### SIBL SIMMENTALS

Barclay & Michelle Smith & Family  
RR#1, Site 3, Box 6, Cherhill, AB T0E 0J0  
Home: 780-785-2045 • Cell: 780-305-6716

### CINDER ANGUS

Brad Yoder & Nicolle Hoskins & Family  
2407 TWP Rd 583A, Barrhead County, AB T7N 0L1  
Home: 780-674-5773 • Cell: 780-674-1196

### DWAJO ANGUS

Dwayne, Joanne & Jesse Emery  
Box 31 Camp Creek, AB T0G 0L0  
Home: 780-674-4410 • Cell: 780-305-4209

Can't make it to the sale? **Watch & Bid Online.**

With DLMS you can Watch, Listen & Bid on your computer  
just like you were there with online bidding over the internet

### Instructions for Viewing And Bidding At the Sale

Visit [www.dlms.ca](http://www.dlms.ca), Fill out the registration form located under registration  
and sign-up for your free user account to select a username and password.

**BIDDERS** - To be approved as a bidder, Log in and click BUYER APPROVAL tab,  
select the sale you are interested in bidding at and click sign up.

**For more information or for help getting approved Call:**

Whitney Bosovich 780.991-3025 or Mark Shologan - 780-699-5082

Direct Livestock Marketing Systems  
We're Making the Connection

**DLMS**  
[www.dlms.ca](http://www.dlms.ca)

To find an agent or sale near you today  
visit [www.dlms.ca](http://www.dlms.ca)

Purebred Sales • Daily Presort Sales  
Direct Off-farm Sales every Thursdays at 10:00 am

*Sale Day  
Phones:*

MARK HOLOWAYCHUK, OBI 403-896-4990 • SHANE CASTLE 306-741-7485  
ROGER PETERS, OBI 403-828-9815 • DWAYNE EMERY 780-305-4209  
• BRAD YODER 780-674-1196 • BARCLAY SMITH 780-305-6716

# SIBL SIMMENTALS

BARCLAY & MICHELLE SMITH & FAMILY  
IVAN & LINDA SMITH  
CHERRILL, AB  
HOME (780) 785-2045  
BARCLAY'S CELL (780) 305-6716



It is with great pride we welcome you to the 19th Annual On Target Bull and Female sale. The last year has been quite a whirlwind for us and our breeding program. We made the decision to right size our cowherd and offered up a number of females in our Half the Herd production sale held in December. We are truly grateful for the support we received there. A number of females we offered in that sale have bulls on offer here and we are truly proud of what they produced. Once again we displayed our program at Farmfair in Edmonton featuring 4 heifer calves we offered in the December sale, 1 bred heifer and 1 bull calf, selling here (4 out of 6 sired by Hitman). When the dust settled that day we were awarded both the Premier Breeder and Premier Exhibitor banners, an accomplishment that I had only ever dreamed of. We are truly fortunate to have the fantastic support network that we do, neighbors, friends and family and of course the crew that helps us out at home and at sale and show time! We could not do it without you. Thank you Mom and Dad for your continued help and support and being there when I can't. Thank you to my wife for being mostly understanding of this cow addiction I have and to the kids for your help and not telling mom or grandma about the new words you may have learned chasing cows.

Thank you to all of our bidders and buyers for your tremendous support last year and the many sales prior, it is an honor to do business with you and we look forward to continuing to provide you with a quality product into the future.



R PLUS HITMAN 4194B

## R PLUS HITMAN 4194B

LRPS 4194B FEBRUARY 24 2014 #PG1134497 RED PLD PUREBRED

FOXY ROCKSTAR  
R PLUS HARDROCK 145X  
MISS R PLUS 8014U  
S: R PLUS RELOAD 2006Z  
RED BARON HR P101  
IPU RED BARONESS 1T  
IPU MS BODYBUILDER 49P

KENCO/MF POWERLINE 204L  
S-PAW BLK SHOW OFF 5S  
S-PAW BLK PERFECTA 305P  
D: MISS R PLUS 79X  
CNS DREAM ON L186  
MISS R PLUS 6141S  
MISS R PLUS 4257P

As with any great breeding bull the proof is in the progeny, and Hitman excels with the quality of his progeny. Both male and female Hitman flat out produces. He has sired sale toppers for us for the past couple of years and the first daughters we have calved have us really excited about their production capabilities. Hitman now makes his home at South Holden Simmentals and we look forward to seeing the mark he leaves there.

BW	WW	YW	CE	MCE	MW	M
94	751	1223	-	-	-	-
3.1	69.2	99.7	7.5	3.5	47.0	12.4

## BLI SNIPER 806F

BLI 806F FEBRUARY 2 2018 #PG1244855  
HOMO POLLED PUREBRED

R PLUS GARD ROCK 145X  
R PLUS RELOAD 2006Z  
IPU RED BARONESS 1T  
S: R PLUS HITMAN 4194B  
S-PAW BLK SHOW OFF  
MISS R PLUS 79X  
MISS R PLUS 6141S

LFE BS LEWIS 322U  
MAF R HORIZON 7Y  
LFE KJLI DREAMLADY 79W  
D: CMS SUNSTAR 312A  
NORTH SKY RED HERC 18M  
CMS JEWEL 961W  
CMS LUBA 23L

BW	WW	YW	CE	MCE	MW	M
92	772	1259	-	-	-	-
3.5	71.8	95.5	6.5	4.1	48.6	12.7



BLI Sniper 806F has been our display bull since last summer and continues to be a pen favorite. 806F was the Reserve Bull Calf Champion last fall at Farmfair and was key in helping us be awarded Premier Breeder and Premier Exhibitor at Farmfair. Sniper once again is sired by Hitman who produces the right kind over and over again. On the bottom side of his pedigree the Czech – mate female has done a great job for us raising a son that went to Doug Hahn, a daughter to KD's Simmental and she is now working at Leewood Ranch. Sniper is good haired sound made, loose hided and has excellent muscle and rib shape. He will not over power you with frame but is just really hard to find a hole in. 806F is just a real honest herd bull candidate.



BLI SNIPER 806F - LOT 1



CMS SUNSTAR 312A - DAM OF LOT 1



BLI SNIPER 806F - LOT 1

## BLI FREIGHTTRAIN 812F

BLI 812F FEBRUARY 2 2018 #PG1255709  
POLLED PUREBRED - POLLED TEST PENDING

(2)

R PLUS GARD ROCK 145X  
R PLUS RELOAD 2006Z  
IPU RED BARONESS 1T

S: R PLUS HITMAN 4194B  
S-PAW BLK SHOW OFF  
MISS R PLUS 79X  
MISS R PLUS 6141S

TWIN-CHIEF WALKER 21W  
KOP REVOLVER 116Z  
KOP MS TRADEMARK 803W

D: BLI BREE 424B  
R PLUS 7167T  
BLI WILMA 938W  
BLI NOVA

BW	WW	YW	CE	MCE	MW	M
105	911	1521	-	-	-	-
4.9	73.8	104.4	3.9	1.4	56.8	19.9

Freight Train is just what his name states. The big time performance bull of our entire offering, 812F is extremely long spined, carries extra frame, huge middle and just loaded with power and performance from head to tail. 812F was mothered by what may have been one of our most productive cows with this being our second bull through the sale and in between raising a set of twin heifer calves and breeding back early each and every year. 812F's dam is now working for IH Simmentals and I am sure you will hear more of her in the future. If you like your cattle with extra mass and performance, then 812F will fit the bill.



BLI FREIGHT  
TRAIN 812F  
LOT 2



BLI BREE 424B  
DAM OF LOT 2



BLI FROST BITE 821F - LOT 3

## BLI FROST BITE 821F

BLI 821F FEBRUARY 7 2018 #PG1255716  
POLLED PUREBRED

(3)

R PLUS GARD ROCK 145X  
R PLUS RELOAD 2006Z  
IPU RED BARONESS 1T  
S: R PLUS HITMAN 4194B  
S-PAW BLK SHOW OFF  
MISS R PLUS 79X  
MISS R PLUS 6141S

LFE BOMBSHELL 508N  
LFE BIG DEAL 350L  
LFE PEARL 118N  
D: CRMS 86W  
LFE RED IMPACT 326J  
CRMS 66M  
CRMS KENDRA 35K

BW	WW	YW	CE	MCE	MW	M
90	700	1226	-	-	-	-
1.8	61.2	85.9	8.6	5.1	49.8	19.2

True to his name, Frost bite was born on a cold morning before expected but was up sucking when I found him. 821F maybe be short of his ears but is full of quality. This long spined, thick topped son of Hitman is consistent in type and kind with the rest of his half sibs. Mothered by a tremendous Big Deal daughter who raises good ones year after year. This is however her first bull and we are very happy with him. A full sister sold to KD's Simmentals this past fall and another female sold through the red and black sale as well. Again cow families shine through in our offering.



BLI FIRST DOWN 823F - LOT 4

LFE LF MISS ARNOLD 609U  
DAM OF LOT 4



## BLI FIRST DOWN 823F

BLI 823F FEBRUARY 7 2018 #PG1255718  
POLLED PUREBRED

(4)

R PLUS GARD ROCK 145X  
R PLUS RELOAD 2006Z  
IPU RED BARONESS 1T

S: R PLUS HITMAN 4194B  
S-PAW BLK SHOW OFF  
MISS R PLUS 79X  
MISS R PLUS 6141S

CNS DREAM ON L186  
LFE DREAMING RED 503S  
LFE CHARO 56K

D: LFE LF MISS ARNOLD 609U  
BOZ REDCAT D162  
MISS ARNOLD L2539  
MISS ARNOLD G1505

BW	WW	YW	CE	MCE	MW	M
97	714	1324	-	-	-	-
0.4	58.0	82.8	11.0	5.7	49.3	20.3

Our great donor cow 609U has done it again! 823F is a super soggy, heavy haired tank with excellent muscle and sound structure. 823F is a full brother to our lead off and high selling bull from last year that was very popular and sold to Grant Hunter. 609U was a feature female in our Half the Herd Female sale last fall and went on to be our high seller going to Scissors Creek and Swan Lake Farms. 609U continually raises progeny that rise to the top of the pack be it male or female. 823F has tremendous potential and is sure to make his mark in any program.

## BLI FORTITUDE 830F

BLI 830F FEBRUARY 19 2018 #PG1255749  
POLLED PUREBRED

(5)

R PLUS GARD ROCK 145X  
R PLUS RELOAD 2006Z  
IPU RED BARONESS 1T  
S: R PLUS HITMAN 4194B  
S-PAW BLK SHOW OFF  
MISS R PLUS 79X  
MISS R PLUS 6141S  
EMSIG  
EMPEROR  
351  
D: BLI UPPER CLASS 34U  
KFFC ELVIS HOLB  
MS NORTHFORK 13J  
MS NORTHFORK 40G

BW	WW	YW	CE	MCE	MW	M
107	765	1436	-	-	-	-
4.1	66.5	91.8	3.2	-0.7	51.9	18.6

830F is a half fleck polled powerhouse sired by Hitman. This long bodied, heavy muscled bull was mothered by one of our few remaining fleck cows with an ideal udder and tons of body and power. 830F's dam is now working at IH Simmentals and we have a full sister to 830F in our herd that we are very proud of. Cow power and performance are locked in with this excellent bull.



BLI FORTITUDE 830F - LOT 5

## BLI FINAL DRIVE 845F

BLI 845F MARCH 13 2018 #PG1255776  
POLLED BLAZE FACE PUREBRED

(6)

R PLUS GARD ROCK 145X  
R PLUS RELOAD 2006Z  
IPU RED BARONESS 1T  
S: R PLUS HITMAN 4194B  
S-PAW BLK SHOW OFF  
MISS R PLUS 79X  
MISS R PLUS 6141S  
KWA DYNO 114P  
3D MR RED PEPPER 441S  
LFE LIZZIE 619K  
D: LAZY BAR-B 19W  
CITY VIEW RED MILESTONE  
LAZY BAR-B REDMILE 38P  
LAZY BAR-B ALL RED 30K

BW	WW	YW	CE	MCE	MW	M
106	744	1415	-	-	-	-
4.1	62.3	90.3	4.9	3.8	53.2	22.0

845F is a bull we really like from a cow that has done an excellent job for us. Typical of the Hitman sired bulls, 845F is heavy muscled, long bodied and attractive and very sound and structurally correct. The 19W female has raised a bull for Gary Szybunka and has put females through the red and black sale. A full sister to 845F is our top bred heifer this year and we are really excited about her future. Put a group of these Hitman sons together to increase consistency and performance of a calf crop, you won't go wrong.



BLI UPPER CLASS 34U - DAM OF LOT 5



## BLI FINAL ASCENT 818F

BLI 818F FEBRUARY 5 2018 #PG1255715  
POLLED PUREBRED POLLED TEST PENDING

(7)

IPU RED WESTERN 49X  
KWA FLYF RED MOUNTAIN 16Z  
KWA MS ROCK 14X  
S: HARVIE RED SUMMIT 54B  
HARVIE JDF WALLBANGER 111X  
HARVIE DAKOTA ROSE 11Z  
WS DAKOTA ROSE M86  
WHEATLAND BULL 131L  
RUST BULL 66Z  
TNT MISS SADIE M68  
D: HARVIE COVERGIRL 136D  
RLA REDSTREAM 152S  
SUNNY VALLEY COVERGIRL 57U  
TSC COVERGIRL 908J

BW	WW	YW	CE	MCE	MW	M
90	723	1378	-	-	-	-
2.5	74.1	115.6	9.4	6.0	60.3	23.2

Final Ascent offers a total outcross for our repeat clients as he came in dam from a female we purchased from Harvie Ranching in the fall of 2017 from the SimPower sale. What a job she did for us in her first attempt. 818F is sired by the Supreme Farmfair champion Red Summit and out of a Rust bull daughter that encompasses some of the top cow families in the breed. Moderate in his birth and carrying tons of muscle and top 818F offers some real possibilities for having a big impact on a variety of programs.





BLI FARVA 824F - LOT 8

## BLI FARVA 824F

BLI 824F FEBRUARY 9 2018 #PG1255720  
POLLED PUREBRED

(8)

BMD RED WALKING TALL 13W  
KUNTZ MARSHALL 12Y  
TIMBER WENDY 3W

S: KUNTZ SHERIFF 8A  
MUIRHEAD'S COSMO 27N  
PEACOCK'S L'IL NETTIE 23Y  
MUIRHEAD NETTIE 5W

LFE GOTHAM 819Y  
LFE THE RIDDLER 323B  
LFE BS CHARO 23Y  
D: BLI MISS ARNOLD 652D  
LFE DREAMING RED 503S  
LFE RS MISS ARNOLD 609U  
MISS ARNOLD L2539

BW	WW	YW	CE	MCE	MW	M
80	701	1216	-	-	-	-
-1.7	70.3	107.4	14.7	9.6	61.8	26.6

824F again is proof of the quality of production of the Riddler daughters and the strength of the 609U cow family. This light birthweight herd sire candidate has a lot of potential and offers some very proven genetics. 824F's sire is the popular Sheriff bull who has done a great job siring light birthweight useful progeny that are widely accepted and this guy is no different. The dam to 824F is one of our top 2 year olds with flawless udder structure and has a ton of potential ahead of her.

## BLI ALLIANCE ROCKETS RUSTLER 10F

ALL 10F JANUARY 9 2018 #PG1234596  
POLLED PUREBRED

(9)

TNT POWER SURGE T404  
MRL 130Y  
MRL MISS 557U  
S: COME AS U R RED ROCKET  
MRL HERITAGE 131U  
MISS XCITING 14X  
MRL MISS 354T

CNS DREAM ON L186  
CLO LTS ENTOURAGE 72T  
WAR DIVA M704  
D: JF EBONY'S JOY 1262Y  
STF TOO RED G64  
JB EBONY'S JOY 702T  
SOSF EBONY'S JOY L-123

BW	WW	YW	CE	MCE	MW	M
99	757	1315	-	-	-	-
4.8	83.1	122.4	5.9	2.1	55.0	13.4

Our only Red Rocket son in the sale and we feel he has a lot to offer. Red Rocket is a new sire for us and offers some new genetics for our repeat buyers. Again we continue to talk about cow families and this guy comes from one of the best. The Joy cow family is a very prolific and shines through in some of the top pedigrees throughout the breed. The dam to Rustler is also the grand dam to 847F and I believe that shows the production ability first hand. Rustler is long spined, sound made and carries plenty of muscle and performance.



BLI ALLIANCE ROCKETS RUSTLER 10F - LOT 9



BLI ALLIANCE POLLED BRAVADO 6F  
LOT 10



BLI SPECIAL 207Z - GRANDDAM OF LOT 10

## BLI ALLIANCE POLLED BRAVADO 6F

ALL 6F JANUARY 6 2018 PG#1234600  
POLLED FULL FLECKVIEH - POLLED TEST PENDING

(10)

SMITHBUILT MOLSON 21M  
CHAMPS ROMANO  
CHAMOS PRICILLA  
S: CHAMPS BRAVO  
DFM MARCUS 14M  
VIRGINIA POL BARBI SUE  
ANCHOR "T" BARBI 46K

ANCHOR D VIPER 103W  
SUNNY VALLEY DAKOTA 9Z  
SOUTH SEVEN MISS 58X  
D: ALLIANCE SPECIAL'S DAKOTA  
EMPEROR  
BLI SPECIAL 207Z  
WYVERN RHEOLA FF

BW	WW	YW	CE	MCE	MW	M
88	746	1390	-	-	-	-
2.0	64.1	90.2	8.2	5.5	65.9	33.8

Polled Bravo 618 is our only Full Fleck bull on offer his year and is a good one. 618 is a full brother to our Bravo bull offered last year that was a favorite in the pen as well. 618 is similar in kind but offers more power and scale with the same soft hide and loose make up and is tremendously sound on his feet and legs. You will appreciate the overall completeness 628 has with his herd bull character and smooth front third. 618 has tremendous potential and could make a big impact on any herd.

## BLI EASTON 757E

CLAY 757E JULY 9 2017 #PG1213793

POLLED HETERO BLACK PUREBRED – POLLED TEST PENDING

11

R PLUS HARD ROCK 145X  
R PLUS RELOAD 2006Z  
IPU RED BARONESS 1T

S: R PLUS HITMAN 4194B  
S-PAW BLK SHOW OFF  
MISS R PLUS 79X  
MISS R PLUS 6141S

NICHOLS LEGACY G151  
HOOKS SHEAR FORCE 38K  
C&D TRACY

D: CRMS 330W  
CRMS KNIGHT NELSON 34N  
CRMS 77T  
CZAR MS JANIE 202M

BW	WW	YW	CE	MCE	MW	M
82	-	-	-	-	-	-
1.9	67.0	102.2	10.3	6.4	52.4	18.9

We do not typically have off age bulls offered but we think this one is very deserving. We flushed this guy's dam late and that is why he was born out of our normal calving period. 757E was not treated well through his first winter so he may have been held back a bit. However he has continued to impress us with his structural integrity, herdbull character, overall mass and his tremendous soundness. His dam is one of our top black cows and was selected to flush to our own herd bull Hitman who flat out worked for us. 757E has tremendous potential and deserves your appraisal and we are sure you will not be disappointed.

FEB 6/19 WEIGHT – 1630 LBS.



BLI EASTON 757E - LOT 11  
(BOTH PHOTOS)



## BLI FORTIFIED 802F

BLI 802F JANUARY 26 2018 #PG1268179

POLLED BLACK PUREBRED – COLOR AND POLLED TEST PENDING

12

LFE THE DARK KNIGHT 350U  
LFE GOTHAM 819Y  
LFE BEST LADY 47W

S: LFE THE RIDDLER 323B  
TNT TANKER U263  
LFE BS CHARO 23Y  
LFE CHARO 3N

WHEATLAND BULL 680S  
SNIDER'S XXL 1Y  
BBN MISS STAR 38S

D: CRMS 386D  
LFE BIG DEAL 350R  
CRMS 335Y  
CRMS 66T

BW	WW	YW	CE	MCE	MW	M
70	809	1503	-	-	-	-
3.2	83.3	125.3	5.1	4.8	63.6	21.9

What a way to start the yearling offering of our bulls. 802F really does put it all together. Light birthweight, explosive growth, tons of hair, big time muscle expression, huge rib shape and sound from the ground up. Riddler has worked very well in our program and we chose to try him on a handful of heifers, turned out to be an excellent decision. 802F has never had a bad day and has been a pasture and pen favorite since day 1. 802F is mothered by an XXL 1Y daughter who worked well and sired highly sought after bulls and very productive females. The Riddler daughters we have calved are super uddered females that are very productive and have us very excited about their future. Fortified could very well be one of the most complete black bulls we have ever offered.





## BLI FULL HOUSE 814F

BLI 814F FEBRUARY 2 2018 #PG1268178  
POLLED BLACK ¾ - POLLED AND COLOR TEST PENDING

13

SVF/NJC MO TOWN M216  
JS SURE BET 4T  
JS BLACK MAGIC WOMAN 13P  
S: GSC ALL IN 72A  
WAGR DREAM CATCHER 03R  
MISS WERNING KP 8543U  
MISS WERNING 534R

LFE GOTHAM 819Y  
LFE THE RIDDLER 323B  
LFE BS CHARO 23Y  
D: BLI DIVA 629D  
SIMMENTAL/SIMMENTAL

BW	WW	YW	CE	MCE	MW	M
80	763	1351	-	-	-	-
0.1	42.5	64.6	7.7	5.1	36.7	15.5

814F follows 802F very closely in type and kind and is proof of what the Riddler daughters are capable of producing. 814F offers a twist in pedigree on the top side being sired by the GSC All in 72A bull. All In is a direct son of what may be the greatest producing cow in the Simmental breed, 8543U. Combine that cow power with the Riddler and you get this chunk of a bull. 814F comes by his name honestly, full of meat and muscle, super hairy, and all bull. This light birth weight bull is impressive and deserves a look.

## BLI FORTY CREEK 847F

BLI 847F MARCH 14 2018 #PG1266946  
POLLED BLACK PUREBRED - COLOR AND POLLED TEST PENDING

14

LFE GOTHAM 819Y  
LFE THE RIDDLER 323B  
LFE BS CHARO 23Y  
S: BLI DARK WHISKEY 659D  
LFE DREAMING RED 503S  
LFE MS ARNOLD 609U  
MISS ARNOLD L2539

NICHOLS LEGACY G151  
HOOKS SHEAR FORCE 38K  
C&D TRACY  
D: ALLIANCE JOY'S IGNITION  
CRMS KNIGHT NELSON 34N  
CRMS 77T  
CZAR MS ANNIE 202M

BW	WW	YW	CE	MCE	MW	M
82	672	1332	-	-	-	-
1.9	67.0	102.0	10.3	6.4	52.4	18.9

It isn't often we retain bulls for our own use do to the smaller size of our herd but when this guy's sire was born we decided that is what we needed to do. It allowed for us to utilize a hetero black Riddler son and further incorporate the great genetics of our red donor cow 609U. 847F is proof that was a wise decision. Again you can see the positive traits of the Riddler shining through, explosive muscle, good hair, moderate birthweight and excellent growth. Mothered by another first calf heifer and what a job she did on her first attempt. 847F is only a mid-March but gives up very little to his counterparts.



## BLI FIRST CHANCE 860F

BLI 860F APRIL 20 2018 #PG1268180  
POLLED / SCURRED HETERO BLACK PUREBRED

15

WS PILGRIM H182U  
PROFIT  
WAGR PANARAMA 204Z  
S: R PLUS CAPITAL 6233D  
TWIN-CHIEF PRINCE 203P  
MISS R PLUS 7086T  
WFL MS 933J BLACK 5031R

LFE BS LEWIS 322U  
BLI YUKON 108Y  
LFE RS MISS ARNOLD 609U  
D: CRMS BLI CATALINA 375C  
WFL TIMBERQUEST 66R  
DDM 278X  
DDM 202T

BW	WW	YW	CE	MCE	MW	M
88	742	1374	-	-	-	-
2.9	56.5	79.4	8.3	4.1	49.6	21.4

Our only son of our new herd bull Capital 6233D as we used him only lightly in his first year. 860F offers another genetic twist for our repeat buyers with his sire being out of Profit who is an outcross for our program. 860F is the youngest bull in our offering but worthy of being here with his smooth build, sound structure and excellent muscle. We really like this young bull and are excited about the possibilities of his future.



## BLI ALLIANCE WIDE TRACK 7F

ALL 7F JANUARY 7 2018 #PG1234599

POLLED BLACK PUREBRED – POLLED AND COLOR TEST PENDING

16

HRM RIGHT ON T08  
3C W/C WIDE TRACK W9462  
3C STEVIE S6509 B

S: W/C WIDE TRACK 694Y

PVF-SSH 1L10 LIBERTY  
MISS WERNING 649S  
MISS WERNING 294M

HTP/SVF DURACELL T52  
SS/PRS HIGH VOLTAGE 244X  
KENCO MILEY COTTONTAIL

D: BOUNDARY SARAH 7C

OLF ODIN U15  
BOUNDARY SARAH 124A  
BOUNDARY SARAH 91Y

BW	WW	YW	CE	MCE	MW	M
88	837	1461	-	-	-	-
2.6	78.2	116.3	9.5	2.5	60.7	21.6



718 is a full brother to the popular Widetrack son we sold last year to Sunnybend Colony and offers a lot of the same qualities. Big topped, long spined and attractive. 718 moves out well and sound in his structure. We had 718 on display at the Canadian Bull Congress where he was a class winner in the Rancher's Choice bull show. Cow families are very important to us and 718 comes from an excellent one. 718 was also recognized by the Canadian Simmental Association as the 3rd place bull for the award of excellence, not only has he excelled in the showing but is sure to be an excellent breeding bull as well.

## Open Heifers

### BLI FREIDA 851F

BLI 851F MARCH 21 2018 #PG1269118

BLACK POLLED PUREBRED

18

LFE GOTHAM 819Y  
LFE THE RIDDLER 323B  
LFE BS CHARO 23Y

S: BLI DARK WHISKEY 659D

LFE DREAMING RED 503S  
LFE MS ARNOLD 609U  
MISS ARNOLD L2539

LFE THE DARK KNIGHT 350U  
LFE BS LEWIS 391A  
LFE BS FIRSTBASE 36X

D: CRMS 479D

MR NLC SUPERIOR S6018  
CRMS 359B  
CRMS 304W

BW	WW	YW	CE	MCE	MW	M
71	-	-	-	-	-	-
0.5	73.2	108.5	11.2	7.4	60.4	23.8

Our only black heifer in the sale offering and another younger female out of a 2 year old first calver. Sire by our Riddler son with 609U in the pedigree and a good 391A daughter. The 391A cattle have performed well, they are born easy, have enough performance and are very maternal.



CRM BLI FIRST CLASS 801F  
SOLD TO RANCIER FARMS IN OUR 2018 HERD REDUCTION SALE



BLI ELLA 720E - R PLUS HITMAN 4194B DAUGHTER  
CLASS WINNER AT FARMFAIR 2018



BLI ABBY 841F  
R PLUS CAPITALIST 6233D DAUGHTER - SOLD TO ALLIANCE SIMMENTALS

## BLI JESSE 837F

BLI 837F MARCH 5 2018 #PG1255764  
RED POLLED PUREBRED

19

WS PILGRIM H182U  
PROFIT  
WAGR PANARAMA 204Z  
S: R PLUS CAPITAL 6233D  
TWIN-CHIEF PRINCE 203P  
MISS R PLUS 7086T  
WFL MS 933J BLACK 5031R

R PLUS 20X  
BLI RED ADDICTION 224Z  
LFE RS MISS ARNOLD 609U  
D: JAYSHAW MS 14B  
MRL ALL IN 100S  
JAYSHAW YARIS  
NUG MISS 292T

BW	WW	YW	CE	MCE	MW	M
80	-	-	-	-	-	-
1.3	56.3	81.7	10.0	4.9	50.3	21.9

837F is a nice made female with plenty of length and overall shape and balance. She is attractive made and good haired. This red female is sired by our Profit son and out of a productive Red Addiction daughter that came from the good Jayshaw program.



R PLUS CAPITALIST 6233D - SIRE OF LOT 19

## BLI FIRST LADY 858F

BLI 858F APRIL 7 2018 APPLIED FOR  
RED POLLED PUREBRED

20

FBF1 COMBUSTIBLE  
FBF1/SF IGNITION  
FBF1 GORGEOUS LADY  
S: ALLIANCE BLACK DETONATOR  
DESTINY BUCKEYE  
JETSTREAM BRIGHT LITE 10B  
FARL LIGHT DREAMS

LFE THE DARK KNIGHT 350U  
LFE BS LEWIS 391A  
LFE BS FIRSTBASE 36X  
D: CRMS 475D  
R PLUS 149X  
CRMS 296B  
DDM 202U

BW	WW	YW	CE	MCE	MW	M
80	-	-	-	-	-	-
-	-	-	-	-	-	-

This sweet made red blaze female is one I really like and even with an April birthdate was one that got noticed all summer long. 858F is out of black parents and offers a new twist for a red pedigree. This deep sided, super hairy female looks to have a bright future. Her sire was purchased from Alliance Simmentals and was used on our heifer pen for the last 2 years.



ALLIANCE BLACK DETONATOR - SIRE OF LOT 20

## HIGH SELLING COWS AT OUR 2018 HERD REDUCTION SALE



BLI AFFAIR 315A - SOLD TO KD'S SIMMENTALS



LAZY B BAR BOON 6A - SOLD TO R PLUS SIMMENTALS

# CINDER ANGUS

BRAD, NICOLLE, BRYNNE & TAVIANNE YODER  
COUNTY OF BARRHEAD, AB  
HOME (780) 674-5773  
BRAD'S CELL (780) 674-1196



Welcome to the 19th On Target Sale. We have the pleasure this year of working with Dwajo and SIBL families. They are some great and successful cattlemen, and even better friends.

We would like to thank all the bidders and buyers of our bull and female program over the last 18 years. Your confidence of our quality cattle is truly humbling, and the reason we continue to dedicate ourselves to developing strong functional genetics that will go out and work in our industry.

This past year has been more than our family could have imagined, from Brynne earning the Intermediate Aggregate and Tavi ranking 3rd in aggregate at the highly competitive Summer Synergy junior program, to seeing them both on the big stage at Calgary Stampede receiving scholarships from the CS Foundation. The girls also garnered many other successes along the junior programs this summer, including the Lady Elaine Yearling Bracket Champion, and Brynne and her partner, Hannah, capturing the Western Canadian Junior Show Team Judging Champions. Red Roundup saw us have the high selling female with Red Cinder Freyja 29E, who then went on to win Grand Champion Red Angus Female at both Farmfair and Agribition. A good number of very astute cattlemen have invested in her genetics and she will be a standout for years to come.

With all the time on the show road, there are many people to thank for their help and expertise; Jared Couch, Abbie Nikkel, Tell Calvert, Julie Sharp, Cache McLerie, and Dallas Isaac. Without these terrific folks, we would not have been able to obtain the level of success that we did this past Fall.

The bulls in this year's sale offer some of the very best genetics we have had to sell; some terrific heifer bulls and some big performance, push down the scale, type of bulls. We can't wait to see you at the farm or at the sale this year. Your evaluation of our cattle keeps us on our toes!

*Brad, Nicolle, Brynne and Tavi*



RED CINDER BOURNE 329F - LOT 21



RED COCKBURN ASSASSIN 624D - SIRE OF LOTS 21, 22 & 23

## RED CINDER BOURNE 329F

TPY 329F FEBRUARY 23 2018 #2051983



RED LSF SAGA 1040Y  
RED PIE SPECIALIST 430  
RED PIE PLAYMATE 232  
S: RED COCKBURN ASSASSIN 624D  
RED LAZY MC HUSTLE 18T  
RED COCKBURN CORA 254Z  
RED WILBAR CORA 443P

RED CLAY COLT 21X  
RED LONE STONE REVOLVER 138Z  
RED LONE STONE JENNA 95U  
D: RED CINDER GLITTER 29B  
RED LONE STONE PURSUIT 81W  
RED CINDER FREYJA 29Y  
RED ROYAL FREYJA 29M

	BW	WW	YW	MILK
	84	775	1411	-
EPI ACTUAL	3.2	54	95	17

Here is a bull that we can confidently call the real deal. Red Cinder Bourne 329F is a very unique bull, from his huge performance to his quiet disposition. Bourne will be an outcross to many Red Angus cattle out there. This is a bull that has been an easy pick in the field and the pen the entire time. He has the most desirable growth; starting with a low birth weight of 84 lbs and an explosive adj 365 of 1411 lbs. Bourne isn't a bull that's just all about the numbers, he is an outstanding individual for his phenotype; he is stylish and full of athleticism, tremendous spring of rib and overall mass on a moderate frame. His sire, is Red Cockburn Assassin, created a huge buzz among breeders and garnered \$77 500 at Cockburn's 2017 sale. He has continued to outbreed himself in this individual. His dam is no slouch herself; a big topped, soggy female out of Red Lone Stone Revolver 138Z – 2015 Canadian Red Angus Show Bull of the Year. When you look closer at his pedigree, you'll appreciate the strength of his maternal contributions. One of our all-time favourite cows, Red Royal Freyja 29M, who has raised most notably the 2018 Farmfair and Agribition Grand Champion Female, Red Cinder Freyja 29E. This pedigree is loaded with prestigious, proven cattle on both sides, and we will guarantee that you will travel many miles to find a herd prospect that will rival him. This will be an investment that is going to produce dividends for years to come. **RETAINING 50% SEMEN INTEREST.**

**RED CINDER BAIN 114F - LOT 22****RED CINDER BAIN 114F**

CIND 114F FEBRUARY 02 2018 #2065694



RED LSF SAGA 1040Y  
 RED PIE SPECIALIST 430  
 RED PIE PLAYMATE 232  
**S: RED COCKBURN ASSASSIN 624D**  
 RED LAZY MC HUSTLE 18T  
 RED COCKBURN CORA 254Z  
 RED WILBAR CORA 443P

RED CINDER PURSUIT 101S  
 RED LONE STONE PURSUIT 81W  
 RED LONE STONE MISS INDEED 6S  
**D: RED CINDER MABEL 4Y**  
 RED YY CLOUT 225M  
 RED LONE STONE 225M SATINA 4S  
 RED MYALTA 101H MAYA 25M

	BW	WW	YW	MILK
EPD ACTUAL	83	738	1238	-
	2.8	42	73	17

Red Cinder Bain 114F is a Red Cockburn Assassin son with an 83 lb BW. Assassin is the outcross bull that set the Red Angus world on fire in 2017. Assassin checks many of the boxes for a herd bull; low birth weight and exemplary growth, attractive phenotype and style, and an ample bone to build on. Bain possesses all of his sire's qualities and is backed by a smooth, soft made dam with an ideal udder and disposition. Bain 114F himself, is super extended through his front end with an attractive skull shape. He has plenty of rib shape and muscle dimension that is built on a structurally sound foundation. His pedigree features Red Cinder Pursuit 101S, a truly maternal bull in our program. He has the quietest of dispositions, is easily handled and is halter broke. His performance numbers prove that he won't be left in the dust when it comes time to weigh in, making him a complete package. In our opinion, this is a pretty cool bull, with a nice genetic package that will be an asset to any purebred or commercial breeder's program.

**RED CINDER MR WICK 301F**

CIND 301F FEBRUARY 02 2018 #2051984



RED LSF SAGA 1040Y  
 RED PIE SPECIALIST 430  
 RED PIE PLAYMATE 232  
**S: RED COCKBURN ASSASSIN 624D**  
 RED LAZY MC HUSTLE 18T  
 RED COCKBURN CORA 254Z  
 RED WILBAR CORA 443P

TLA NORTHERN SAMURAI  
 RED KBJ SAM'S PROSPECTOR 133Z  
 KBJ ROUND LASSIE 18T  
**D: RED CINDER HEATHER 301W**  
 RED CLAYSMORE REDMAN 16B  
 RED HOWE MS HEATHER DDH 101G  
 RED MS HEATHER DDH 10Y

	BW	WW	YW	MILK
EPD ACTUAL	90	763	1342	-
	2.9	32	70	19

Red Cinder Mr Wick 301F is a long made, dark red bull with plenty of extension in his front end. He is sired by the most talked about bull last year from Cockburn Angus. Red Cockburn Assassin, who traded for \$77 500, adds another source of dimension, performance and calving ease to our program, and does this with a different pedigree and overall structural soundness. This pedigree is loaded with huge maternal goodness; Red Angus breeders will attest to the strength of these families – Pie Playmate, Cockburn Cora, Lassie 18T, and our cornerstone, Heather 101G. This folks, is a proven outcross pedigree. Don't hesitate to find and evaluate this one; he is halter broke and has a very easy-going disposition to pass onto his progeny. Past siblings have sold to Martin Clausen, Linda Weins and River Rock Angus.

**RED CINDER SURFER 114F**

CIND 14F JANUARY 12 2018 #2035766



RED BIEBER ROOSEVELT W384  
 RED BIEBER ROLLIN DEEP Y118  
 RED BIEBER TILLY 399W  
**S: RED BIEBER DEEP END B597**  
 RED LJC MISSION STATEMENT P27  
 RED BIEBER LAURA 158W  
 RED BASIN LAURA 5301

RED GOLD-BAR KING V415 107K  
 RED CINDER GONNA B FAMOUS 55W  
 RED ROYAL FREYJA 55M  
**D: RED CINDER MABEL 14Z**  
 RED CINDER PURSUIT 101S  
 RED CINDER MABEL 4W  
 RED LONE STONE 225M SATINA 4S

	BW	WW	YW	MILK
EPD ACTUAL	93	725	1403	-
	4.5	55	93	17

Surfer is a performance giant that can be used to cover all types of cows and expect his calves to push the scales down and put money in your pocket. 14F has lots of natural eye appeal and massive muscle pattern throughout his large frame. He mirrors many of the qualities of his sire; long, extended neck, deep middle, length galore and impressive performance data. 14F posted an adjusted WW of 725 and an adjusted YW of 1405. His sire, Bieber Deep End B597, is an American AI bull that we admire for him for his performance and stunning good looks. Deep End is also the son of Rollin Deep, a bull that has gained a reputation for highly marketable progeny. BIG is an adjective that describes many of Surfer's qualities; big bone, big butt, big foot and big nuts. This gentle, halter broke bull is going to be a breeding dream for someone. Past brothers have sold to Pansgreau Farms and Brent Quest.

**RED CINDER MR WICK 301F - LOT 23****RED CINDER SURFER 114F - LOT 24**



**RED CINDER  
SHARK TANK 883F  
LOT 25**

## RED CINDER SHARK TANK 883F

CIND 883F JANUARY 16 2018 #2035767



RED BIEBER ROOSEVELT W384  
RED BIEBER ROLLIN DEEP Y118  
RED BIEBER TILLY 399W  
**S: RED BIEBER DEEP END B597**  
RED LJC MISSION STATEMENT P27  
RED BIEBER LAURA 158W  
RED BASIN LAURA 5301

RED PERKS ADVANCE 121R  
RED CINDER PURSUIT 101S  
RED HOWE MS HEATHER DDH 101G  
**D: RED LONE STONE HERTA 83U**  
RED YY CLOUT 225M  
RED MYALTA 225M RENEE 60R  
RED MYALTA GM MEG 16M

	BW	WW	YW	MILK
EPD ACTUAL	94	638	1377	-
	2.9	42	85	19

Red Cinder Shark Tank 883F has many features that make him a nice option for purebred or commercial breeders. His sire, Deep End, is producing calves with extraordinary muscle shape and pattern, and ability to really move well. Shark Tank is no exception when it comes to movement; he really likes to get out and travel, with a nice stride and foot placement. He is a real powerhouse with lots of rib shape and capacity in his middle third. His dam, a 10 year old cow, is nothing short of impressive for her age and has a picture perfect udder. She has raised some tremendous progeny for us; including a bull sold to Wyatt Branden and two of our daughter's 4H heifers, one being a Power Eye daughter of Tavi's that has been running neck and neck with Brynne's very successful heifer this year. This pedigree and bull are front pasture quality that you can build a herd from.



**RED BIEBER DEEP END B597 - SIRE OF LOT 25**



**CINDER ROSETTE 117A - DAM OF LOT 26**

## RED CINDER CUPID 317F

CIND 317F FEBRUARY 14 2018 #2052166

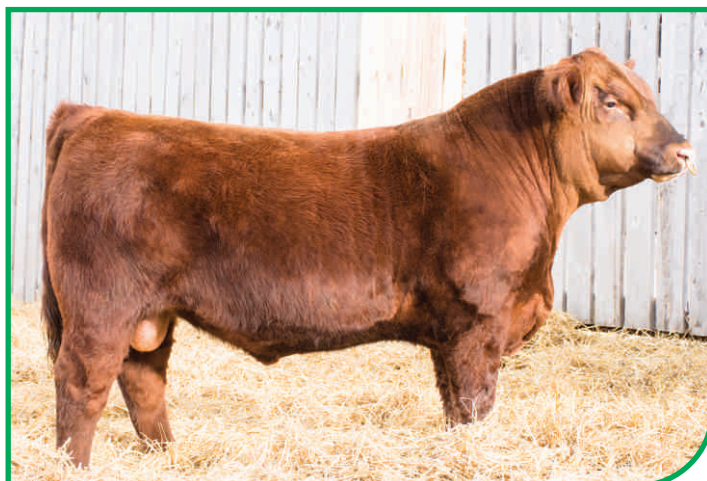


RED PERKS ADVANCE 121R  
RED CINDER PURSUIT 101S  
RED HOWE MS HEATHER DDH 101G  
**S: RED CINDER HOT SHOT 393D**  
RED LSF RR BULLETPROOF 0375X  
RED CINDER CHETA 93B  
RED CINDER GLY CHETA LASSIE93S

RED CINDER SMARTIN' UP 132P  
CINDER IBULL 119X  
CINDER TOTALLY ROSY 19S  
**D: CINDER ROSETTE 117A**  
RED CINDER PURSUIT 101S  
RED CINDER ROSETTE 17W  
RED MYALTA 225M RENA 17R

	BW	WW	YW	MILK
EPD ACTUAL	85	774	1279	-
	4.3	36	73	13

This is a bull that covers all the bases! Red Cinder Cupid 317F is a bull that stands out in the pen and that we truly have appreciated right from birth. His phenotype is ideal; he possesses a clean, tidy front end, matched with a strong fore rib and overall balance. Cupid has more than ample bone and foot under him and also has plenty of rib shape and capacity. His hair type and color are what we all want, and the topping to this bull is his gentle disposition. This pedigree boasts several maternally strong females from our program; the Heather's, Cheta's, Rose's, and Rosette's; it just doesn't get any more influential than that. His smooth makeup and an 85 lb birth weight will make him suitable for heifers or cows.



**RED CINDER CUPID 317F - LOT 26**

## RED CINDER FAST FREIGHT 893F

CIND 893F FEBRUARY 05 2018 #2052164



RED PERKS ADVANCE 121R  
RED CINDER PURSUIT 101S  
RED HOWE MS HEATHER DDH 101G  
S: RED CINDER HOT SHOT 393D  
RED LSF RR BULLETPROOF 0375X  
RED CINDER CHETA 93B  
RED CINDER GLY CHETA LASSIE93S

RED SIX MILE INDEED 810M  
RED DIMLER INDEED 92R  
RED CUMNOCK ARDATH 485K  
D: RED LONE STONE HERTA 93U  
RED GET-A-LONG KID ATLAS 026  
RED MYALTA GM MEG 16M  
RED MYALTA HERTA 3H

	BW	WW	YW	MILK
EPD ACTUAL	90	753	1289	-
	4.2	42	80	17

Fast Freight is a moderate framed bull with a 90 lb BW, that has a super front end and is long spined. The mother hails from the Lone Stone program and the home raised Hot Shot 393D bull that was purchased by Elizabeth Sieb. Hot Shot 939D boasts two of our prominent cow families; Cheta 93S (the grandam of the Captain Jack bull that sold to Thistle Ridge) and the Heather 101G cow who has produced some super females that continue to work in our program.



## RED CINDER SLICK 952F

CIND 952F FEBRUARY 12 2018 #2052165



RED PERKS ADVANCE 121R  
RED CINDER PURSUIT 101S  
RED HOWE MS HEATHER DDH 101G  
S: RED CINDER HOT SHOT 393D  
RED LSF RR BULLETPROOF 0375X  
RED CINDER CHETA 93B  
RED CINDER GLY CHETA LASSIE93S

RED SIX MILE INDEED 810M  
RED DIMLER INDEED 441P  
RED CUMNOCK LAKOTO 512K  
D: RED LONE STONE SUIJI LASS 52W  
RED GET-A-LONG KID ATLAS 026  
RED MYALTA NAOMI 38N  
RED CROWFOOT SUIJI LASS 6104F

	BW	WW	YW	MILK
EPD ACTUAL	85	756	1093	-
	4.7	42	62	15

Here's a Hot Shot 393D calf. This sire was a stand out in our pen for his phenotype and maternal backing. It was a natural decision to utilize him in our program, resulting in a strong set of calves from him. Slick 952F is a super balanced bull with an attractive skull shape and 82 lb BW that would make him suitable for heifers. His sister, who was purchased by Airam Farms, was Red Roundup Futurity Champion as a heifer calf and Reserve Senior Yearling at Farmfair. This cow has proven herself year after year; and this year is no different. Slick has a terrific disposition and everything in his genetics dictates that he will leave a great set of daughters for you.



## RED CINDER HARLEM 493F

BLY 493F APRIL 25 2018 #2038268



RED BADLANDS OPPORTUNITY 53Y  
RED BRYLOR OTB MARIOTA 90B  
RED T-S OLIVIA 706P  
S: RED JAS DIPLOMAT 34D  
RED STEWART FORMATION 13S  
RED FRASER POTEET 12X  
RED FRASER POTEET 529R

RED BRYLOR SMOKER 64S  
RED SLGN X-FILES 006X  
RED MEADO-WEST PERSUASION  
D: RED CINDER CHETA 193C  
RED LONE STONE PURSUIT 81W  
RED CINDER CHETA 93A  
RED CINDER GLY CHETA LASSIE93S

	BW	WW	YW	MILK
EPD ACTUAL	80	686	1167	-
	2.9	50	86	25

Harlem is a low 80 lb birth weight bull that will be a heifer's dream. He is exceptionally smooth fronted and correct. Four of his five Epd values are above the top 10%, including being top 1% for total maternal. Two bulls that we regard highly when selecting bulls for our program were Red Jas Diplomat and Red SLGN X-Files 006X; this is the result of both of them. Harlem's dam, is an X-Files daughter that was 2015 Reserve Champion Bred & Owned at Farmfair and is a sweetly made, moderate female with superb udder quality. Harlem is backed by an extremely strong maternal pedigree, including Fraser Poteet and Red Cinder Gly Cheta Lassie 93S. He won't be the biggest in the pen, as he is an April 25th born and we really felt that he has more than enough to offer that he really deserved to be in the sale.





## RED CINDER BULLET 115F

CIND 115F MARCH 19 2018 #2035773



RED CLAY COLT 21X  
RED LONE STONE REVOLVER 138Z  
RED LONE STONE JENNA 95U  
**S: RED CINDER RICOCHET 18C**  
RED HB GENERAL 103N  
RED LONE STONE 103N LADY 18S  
RED MYALTA 104H POPPY 18P

RED GOLD-BAR KING V415 107K  
RED CINDER GONNA B FAMOUS 55W  
RED ROYAL FREYJA 55M  
**D: RED CINDER QUEEN 15A**  
RED TOWAW PROSPECTOR 137M  
RED SF QUEEN 15R  
RED SF QUEEN 6L

	BW	WW	YW	MILK
BPD ACTUAL	79	908	1213	-
	2.7	30	53	17

Red Cinder Bullet 115F has heifer bull written all over him. He comes with a 79 lb BW, a smooth, extended front end and backed by a consistent cow family. His sire, Ricochet 18C, has left many smooth made calves at Cinder and has placed many marketable ones in several other herds. Three heifer calves sold this year in the Northern Sale and one to Dersta Farms at the Power and Perfection Sale at Agribition. We would definitely recommend him for use on heifers all day long.

## RED CINDER DING 160F

CIND 160F JANUARY 05 2018 #2035764

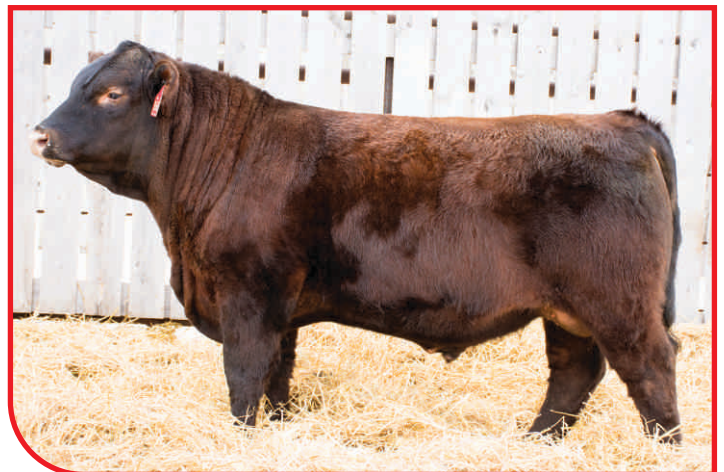


RED CLAY COLT 21X  
RED LONE STONE REVOLVER 138Z  
RED LONE STONE JENNA 95U  
**S: RED CINDER RICOCHET 18C**  
RED HB GENERAL 103N  
RED LONE STONE 103N LADY 18S  
RED MYALTA 104H POPPY 18P

RED GOLD-BAR KING V415 107K  
RED CINDER GONNA B FAMOUS 55W  
RED ROYAL FREYJA 55M  
**D: RED CINDER BIEBIRD 60Y**  
RED YY CLOUT 225M  
RED MYALTA 225M RENEE 60R  
RED MYALTA GM MEG 16M

	BW	WW	YW	MILK
BPD ACTUAL	71	688	1031	-
	-0.5	18	33	17

This, my friends, is the one to find if you are looking for a calving ease specialist. His dam, a moderate female with exceptional udder suspension and quality, has an average BW of 73 lbs on bull calves and 68 lbs on heifer calves. "Ding" 160F was a highly vigorous calf with a BW of 71 lbs and everything about him points directly towards being calving ease, plus he maintains an honest growth curve. This will be the bull that will let you sleep easy.



## RED CINDER CLUBBY 323F

CIND 323F JANUARY 12 2018 UNREG BULL

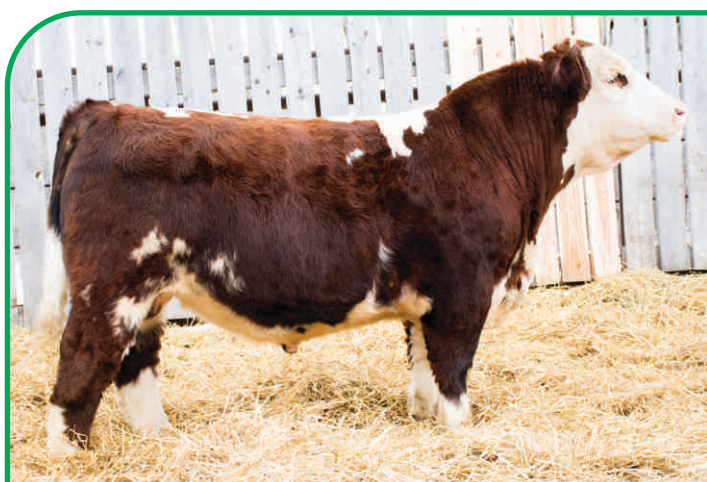
BW: 93 LBS AUG 10 WT: 750 LBS JAN 20 WT: 1200 LBS



MONOPOLY  
**S: MAN AMONG BOYS (CLUBBY)**  
CMAC HARD CORE

KCF BENNETT TOTAL  
**D: SIMMIE/ANGUS COW**  
SIMMIE/ANGUS COW

For all you club calf enthusiast, here is something special. A Man Among Boys son out of an Angus/Simmental cow that has a load of prominent Angus genetics in her. 323's dam is a commercial heifer that we couldn't help but keep in our replacement pen. She possesses femininity, power and an impeccable udder. Imposter 323F has a load of bone and as much natural muscle in him as any of our sale bulls. He has been a chunk of a calf from the beginning and has always been at the top of the growth charts. He's all haired up, has a great disposition, a little chrome and is ready to go breed some cows.





## RED CINDER RICOCHET 731F

CIND 731F JANUARY 21 2018 UNREG BULL

BW: 83 LBS AUG 10 WT: 810 LBS JAN 20 WT: 1320 LBS

RED CLAY COLT 21X  
RED LONE STONE REVOLVER 138Z  
RED LONE STONE JENNA 95U  
**S: RED CINDER RICOCHET 18C**  
RED HB GENERAL 103N  
RED LONE STONE 103N LADY 18S  
RED MYALTA 104H POPPY 18P

RED THAT'LL DO CUB 120M  
RED GEIS CUB 200R  
RED GEIS MARSLITE 149'02  
**D: SIMMIE/RED ANGUS COW TAG#731**  
DOUBLE BAR D ADONIS 603N  
LONESTONE MS ADONIT 31T  
MRLN PILAR

33

"Trickster" is a powerhouse of a bull. He exhibits an abundance of muscle shape and body length in a balanced package on a strong foundation. His heavy bone and large foot will lend his calves to high weight gains. He is sired by Ricochet, who himself was a powerful, long, smooth made bull and is out of a Geis Cub X Simmental dam. He has the best of both the breed worlds: calving ease and hybrid vigor, and is  $\frac{3}{4}$  Red Angus and  $\frac{1}{4}$  Simmental. With an 83 lb BW, imagine using him on some cows and sending 800 lb calves to the auction or keeping replacements to add some different genetics.



## RED CINDER RICOCHET 721F

CIND 721F FEBRUARY 4 2018 UNREG BULL

BW: 80 LBS AUG 10 WT: 760 LBS JAN 20 WT: 1200 LBS

RED CLAY COLT 21X  
RED LONE STONE REVOLVER 138Z  
RED LONE STONE JENNA 95U  
**S: RED CINDER RICOCHET 18C**  
RED HB GENERAL 103N  
RED LONE STONE 103N LADY 18S  
RED MYALTA 104H POPPY 18P

RED THAT'LL DO CUB 120M  
RED GEIS CUB 200R  
RED GEIS MARSLITE 149'02  
**D: SIMMIE/RED ANGUS COW TAG#721**  
DOUBLE BAR D ADONIS 603N  
LONESTONE MS ADONIT 31T  
MRLN PILAR

34

Ricochet, a home raised bull, has given us many dark, smooth, heavy performing calves and this bull is no exception. 721F is just like his sire in so many ways; smooth, long and a more than ample foot under him and the structure to build weight on. His dam is a  $\frac{3}{4}$  sister to 731F's dam, he is also  $\frac{3}{4}$  Red Angus and  $\frac{1}{4}$  Simmental, and will give your herd a nice boost of dark color and performance in a calving ease package.



RED CINDER FREYJA 29E - GRAND CHAMPION RED ANGUS FEMALE AT AGRIBITION 2018 AND FARMFAIR 2018  
SOLD IN THE 2018 RED ROUND-UP FOR \$15,000 TO BRYLOR RANCH. MATERNAL SISTER TO THE GRANDAM OF LOT 21

# DWAJO ANGUS

DWAYNE, JOANNE & JESSE EMERY  
CAMP CREEK, AB

HOME (780) 674-4410

DWAYNE CELL (780) 305-4209

JESSE'S CELL (780) 284-3490



DWAYNE EMERY



JOANNE EMERY



JESSE EMERY

As I sit here starting to write the Intro it is -40 with the windchill, we are calving cows like rest of the cattle producers and you have to ask why. To be honest we would all say it is because we enjoy it, the new calves been born, new genetics we have chosen to see how they have worked, all to bring you the best genetics, functional cattle, that you can use to improve your herd, be profitable, and enjoy the fruits of your labour.

We would like to Invite you to the 19th On Target Bull & Female Sale and come look at the genetics on offer by us and fellow consignors Cinder Angus, SIBL Simmentals. We have put some of our top heifers for sale this year to represent our herd as they are from different herd sires we have. Dwajo will offer 2 straws of semen to breed the heifers with if the buyer wishes to use it. We have a few different sires we have used Northern View Grand Slam and Bar-E-L Cassidy, RSL Iceman. Which have worked very well for us.

Also, this past fall we hosted the Farmfair International Tour at our place with over 65 folks from overseas and it was a sure pleasure to meet them all and display Dwajo Genetics to them.

We would like to thank all the bidders and buyers from last years sale, and all the people that help us through out the year. Scott, Rachel, Megan, Jordan, Logan and Anne we could not do it without all your help.

If you have any questions please do not hesitate to call any of us at Dwajo.

DWAYNE, JOANNE & JESSE EMERY



JESSE & ANNE

## RED TOPHAM PETERBILT 415B

TOP 415B FEBRUARY 20 2014 #1777891

RED VGW GAME PLAN 508  
RED PIE GAME ON 9109  
RED TPIE CASCADE 561

S: RED SSS POKER FACE 136Y

RED SODAK PRECISION 7408-97

RED SSS ELBA 132M

RED SSS ELBA 546K

RED PATRIOT 629

RED FLYING K PATRICK 85S

RED FLYING K BERRY 141K

D: RED TOPHAM MS BEULAH 845U

RED LODI PRINCE 2632

RED TOPHAM MS BEULAH 657S

RED MS TOPHAM BEULAH 17J

	BW	WW	YW	MILK
EPD ACTUAL	88	694	-	-
	2.3	39	71	14

Red Topham Peterbilt 415B has the largest offering on the sale and is a new sire group for Dwajo Angus. He has averaged 81 lbs for his BW on his bull progeny. He sires dark cherry red progeny with clean front ends, eye appeal and great feet. He adds muscle and thickness as well. The Peterbilt 415B progeny this year for Dwajo have been very sought after, siring a top 3 Finalist at the Red Round-Up Heifer Extravaganza and then selling for \$7000 the next day. The bulls selling are calving ease bulls with clean front ends and again dark cherry red.



## RED RSL ICEMAN 527C

RSL 527C JANUARY 30 2015 #1836606

EXAR MASTER 253  
JUSTAMERE 253 LADDIE 436S  
EARLY SUNSET LASSIE 102L

S: RED NORTHERN ICE MAN 8U

ROSE HILL BIG TIME 7F

MDN MYSTERY PRIDE

ROSE HILL MISS THOR 5C

RED TOWAW INDEED 104H  
RED SIX MILE TROY 243T  
RED RSL SUE 400F

D: RED SPITTALBURN COUNTESS 927W

RED SIX MILE NEW BLOOD 153N

RED SPITTALBURN COUNTESS 727T

RED SPITTALBURN COUNTESS 214M

	BW	WW	YW	MILK
EPD ACTUAL	69	602	-	-
	0.2	21	37	19

Another new sire group for our repeat customers, the Iceman sons are well made, calving ease and good footed bulls that all trace back to the Northern Ice Man bull that Get-A-Long, Brox and RSL owned. His dam is one of RSL Red Angus top end females. This sire group averaged 79 lbs for BW on his bulls and again calving ease giants.

# Dwajo Red Angus

## RED DWAJO MACK 4F

DJE 4F JANUARY 18 2018 #2042777



RED PIE GAME ON 9109  
RED SSS POKER FACE 136Y  
RED SSS ELBA 132M  
S: RED TOPHAM PETERBILT 415B  
RED FLYING K PATRICK 85S  
RED TOPHAM MS BEULAH 845U  
RED TOPHAM MS BEULAH 657S

RED TGA RED CR SAKE 3018N  
RED TGA CR SAKE 6005S  
RED TGA MISS RENEE 4028P  
D: DWAJO LADY 67Y  
MYTTY IN FOCUS  
HIPS LADY 68U  
HIPS LADY 7S

Here is a showy bull with a smooth front end, complimented with lots of thickness and a wide top. 4F is the kind of bull that will produce those heifers that everyone is looking for in the show ring. His dam is a larger framed cow with lots of volume, a great udder and good feet. She produced a heifer to Golden Sunset and a bull to Larry Bartz as well as a daughter who was retained for our herd. A great heifer bull here with a 78 lb. birthweight and adjusted 781 lb. WW. Mack will bring performance to your herd while maintaining calving ease. Heifer Bull.

	BW	WW	YW	MILK
EPD ACTUAL	78	781	1262	-
	0.7	36	74	25



## RED DWAJO THE KID 500F

TW DJE 500F JANUARY 18 2018 #2043274



RED PIE GAME ON 9109  
RED SSS POKER FACE 136Y  
RED SSS ELBA 132M  
S: RED TOPHAM PETERBILT 415B  
RED FLYING K PATRICK 85S  
RED TOPHAM MS BEULAH 845U  
RED TOPHAM MS BEULAH 657S

RED BJR EXCEL 149-5176  
RED ASPEN EXCEL 89H  
RED BJR LAKOTA 968-794  
D: RED ASPEN RUBY 4S  
RED BJR HI HO 319-969  
RED ASPEN RUBY 98H  
RED BJR JEAN 729-4H31

	BW	WW	YW	MILK
EPD ACTUAL	65	669	1281	-
	0.0	24	44	13

The kid is one of our favorites in the bull pen. He's thickly made while maintaining balance in terms of his coloring. We purchased 4S from Aspen Hill Angus as the pick of the heifers. We have been very pleased with her as a cow that continuously produces. Heifer Bull.



### **RED DWAJO BILLY 5F**

TW DJE 5F JANUARY 18 2018 #2042778

**(37)**

RED PIE GAME ON 9109  
RED SSS POKER FACE 136Y  
RED SSS ELBA 132M  
**S: RED TOPHAM PETERBILT 415B**  
RED FLYING K PATRICK 85S  
RED TOPHAM MS BEULAH 845U  
RED TOPHAM MS BEULAH 657S

RED BJR EXCEL 149-5176  
RED ASPEN EXCEL 89H  
RED BJR LAKOTA 968-794  
**D: RED ASPEN RUBY 4S**  
RED BJR HI HO 319-969  
RED ASPEN RUBY 98H  
RED BJR JEAN 729-4H31

	BW	WW	YW	MILK
EPD ACTUAL	73	708	1181	-
	0.0	24	44	13

Red Dwajo Billy is a thick, deep red bull that still has the nice front end that you can work with. His dam 4S is easy fleshing, wide topped, deep, nice udder cow. She has a 2.3 EPD for birth, passing on her easy fleshing and easy birth, she is definitely one of our top cows in our herd. Heifer Bull.



### **RED DWAJO ICEMAN 10F**

DJE 10F JANUARY 19 2018 #2042780

**(38)**

JUSTAMERE 253 LADDIE 436S  
RED NORTHERN ICE MAN 8U  
MDN MYSTERY PRIDE  
**S: RED RSL ICEMAN 527C**  
RED SIX MILE TROY 243T  
RED SPITTALBURN COUNTESS 927W  
RED SPITTALBURN COUNTESS 727T

RED TOWAW ARMAGEDDON 171S  
RED ANCHOR 1 ARMAGEDDON 63X  
RED ANCHOR 1 BEULA 65U  
**D: RED DWAJO PRALEE 128Z**  
RED BCAR WILD CARD  
RED DWAJO PRALEE 45U  
RED DWAJO PRALEE 117L

	BW	WW	YW	MILK
EPD ACTUAL	78	696	1189	-
	-0.6	18	38	23

One of the first Iceman bulls to sell! We purchased him for his calving ease which he has delivered on. His dam 128Z goes back to a Pralee cow yearling that we have had in our herd for a while. She has produced one bull to RSL Angus, a bull to Dean McCoy, and daughter to Schulz Angus. Heifer Bull.



### **RED DWAJO MR MIKE 13F**

DJE 13F JANUARY 21 2018 #2042784

**(39)**

RED PIE GAME ON 9109  
RED SSS POKER FACE 136Y  
RED SSS ELBA 132M  
**S: RED TOPHAM PETERBILT 415B**  
RED FLYING K PATRICK 85S  
RED TOPHAM MS BEULAH 845U  
RED TOPHAM MS BEULAH 657S

RED TOWAW ARMAGEDDON 171S  
RED ANCHOR 1 ARMAGEDDON 63X  
RED ANCHOR 1 BEULA 65U  
**D: RED DWAJO CR LASS 96A**  
RED SOO LINE MR H0904 6013  
RED DWAJO CR LASS 74U  
DWAJO CR LASS 74R

	BW	WW	YW	MILK
EPD ACTUAL	86	699	1207	-
	1.6	29	53	16

He is solid, sound and an attractive bull that has great feet. 13F should be able to cover those cows or heifers. His dam 96A is an attractive cow with a nice udder. She has produced a heifer to Wintering Hills Land & Cattle at Red Roundup and a bulls in last year's sale to Gerry Broekman. Heifer Bull.



## RED DWAJO PETERBILT 19F

DJE 19F JANUARY 23 2018 #2042787

(40)

RED PIE GAME ON 9109  
RED SSS POKER FACE 136Y  
RED SSS ELBA 132M  
S: RED TOPHAM PETERBILT 415B  
RED FLYING K PATRICK 85S  
RED TOPHAM MS BEULAH 845U  
RED TOPHAM MS BEULAH 657S

RED VGW OLY 903  
RED BIEBER OLY Y390  
RED BIEBER TANYA 201W  
D: DWAJO CR LASS 84B  
RED GOLD-BAR MESSENGER 206M  
DWAJO CR LASS 74R  
CARRUTHERS LASS 6F

	BW	WW	YW	MILK
EPD ACTUAL	90	747	1268	-
	2.9	37	67	19

A bull that has done well since the day he was born moderate BW and ww index of 100 and yearling index of 106. The grand dam is still working in our herd at 14 years of age with longevity and production. 19F will work well for you. A maternal brother sold to Meunier Farms at previous On Target Sale. Could be used on heifers.

## RED DWAJO ICEMAN 22F

DJE 22F JANUARY 24 2018 #2072828

(41)

JUSTAMERE 253 LADDIE 436S  
RED NORTHERN ICE MAN 8U  
MDN MYSTERY PRIDE  
S: RED RSL ICEMAN 527C  
RED SIX MILE TROY 243T  
RED SPITALBURN COUNTESS 927W  
RED SPITALBURN COUNTESS 727T

RED TGA RED CR SAKE 3018N  
RED TGA CR SAKE 6005S  
RED TGA MISS RENEE 4028P  
D: RED DWAJO LETTER LASSIE 26W  
RED U-2 ICON 223M  
RED LETTER LASSIE 83R  
RED LETTER LASSIE 23D

	BW	WW	YW	MILK
EPD ACTUAL	85	702	1239	-
	0.3	18	36	21

22F is sired by the RSL Icemen bull who we purchased for his dark red hide and calving ease which he has passed on to his calves. 26W has that udder on her that you would like to have on every cow Perfect. She has produced bulls to Paul Letts and Wallace Janssen, and female to Justin Douglas and 2 females in herd. 22F's grandsire Sake is in the top 10% for CE and top 1% for milk. Keep your replacement heifers out of this guy. Heifer bull.



## RED DWAJO PETERBILT 65F

DJE 65F FEBRUARY 03 2018 #2042822

(42)

RED PIE GAME ON 9109  
RED SSS POKER FACE 136Y  
RED SSS ELBA 132M  
S: RED TOPHAM PETERBILT 415B  
RED FLYING K PATRICK 85S  
RED TOPHAM MS BEULAH 845U  
RED TOPHAM MS BEULAH 657S

RED BASIN SENSATION 702E  
RED GOLD-BAR MESSENGER 206M  
RED TOWAW AMBER 155K  
D: RED DWAJO ALBERTA 111S  
RED BLUE SPRUCE ZOOK 50H  
RED DWAJO ALBERTA 43L  
RED DWAJO ALBERTA 28J

	BW	WW	YW	MILK
EPD ACTUAL	78	761	1221	-
	0.8	34	55	17

The Peterbilt off spring have been popular for their dark red hide, nice smooth front ends and a lot of muscle. 111S has been a consistent producer for us a bull to HR Hahn Cattle Co. and to Ruch Cattle Company. Females retained in herd and to other purebred operations. 78lb BW & 104 weaning index. Heifer bull.



## RED DWAJO PETERBILT 66F

DJE 66F FEBRUARY 04 2018 #2042825

43

RED PIE GAME ON 9109  
RED SSS POKER FACE 136Y  
RED SSS ELBA 132M  
S: RED TOPHAM PETERBILT 415B  
RED FLYING K PATRICK 85S  
RED TOPHAM MS BEULAH 845U  
RED TOPHAM MS BEULAH 657S

KBJ CHIEF 150L  
RED SOO LINE MR H0904 367P  
RED LPC ICELADY DYNAMIC 43K  
D: RED DWAJO HAMILEE 101T  
RED CRESCENT CREEK CHEROKEE 79  
RED DWAJO HAMILEE 35L  
RED DWAJO HAMILEE 32H

	BW	WW	YW	MILK
EPD ACTUAL	85	756	1245	-
	2.2	90	54	16

66F follows the rest of the Peterbilts nice front ends, easy calving and eye appeal. 101T has produced bull to Deb McDonald and females to Mexico and Schulz Angus. 2 retained in herd. Heifer bull.



## RED DWAJO ICEMAN 70F

DJE 70F FEBRUARY 05 2018 #2042826

44

JUSTAMERE 253 LADDIE 436S  
RED NORTHERN ICE MAN 8U  
MDN MYSTERY PRIDE  
S: RED RSL ICEMAN 527C  
RED SIX MILE TROY 243T  
RED SPITTALBURN COUNTESS 927W  
RED SPITTALBURN COUNTESS 727T

RED BAR-E-L WARDEN 144W  
RED T-K RECOIL 72Y  
RED T-K ANNA 54T  
D: RED DWAJO SUPERIOR 46D  
RED TGA CR SAKE 6005S  
RED DWAJO SUPERIOR 11W  
RED DWAJO SUPERIOR 54S

	BW	WW	YW	MILK
EPD ACTUAL	85	750	1296	-
	1.3	27	49	18

An Iceman bull out of a first calver and what a job she has done. 46D is in the top 9% for CE and still raised 70F who has a WW Index of 101 and YW Index of 111. CE and performance. Heifer Bull.



## RED DWAJO ICEMAN 72F

DJE 72F FEBRUARY 06 2018 #2042828

45

JUSTAMERE 253 LADDIE 436S  
RED NORTHERN ICE MAN 8U  
MDN MYSTERY PRIDE  
S: RED RSL ICEMAN 527C  
RED SIX MILE TROY 243T  
RED SPITTALBURN COUNTESS 927W  
RED SPITTALBURN COUNTESS 727T

RED DWAJO GLADIATOR 32L  
RED DWAJO SORCERER 3B  
RED ACC BONNIE 2Z  
D: RED DWAJO LUCY 126D  
RED BIEBER OLY Y390  
RED DWAJO LUCY 137B  
RED DWAJO LUCY 73N

	BW	WW	YW	MILK
EPD ACTUAL	79	785	1275	-
	1.0	32	53	21

72F's dam Lucy 126D has the who's who for pedigree at Dwajo; Gladiator and Lucy 73N have been pedigrees that have produced cattle that have sold at Red Round Up, Northern Select Sale, On Target Sale. Definite cattle that will work well for you. Ranked 3rd in WW in our herd. Can't wait to see what else she will produce. Heifer Bull.



## RED DWAJO SPANKY 75F

DJE 75F FEBRUARY 06 2018 #2042832

46

RED PIE GAME ON 9109  
RED SSS POKER FACE 136Y  
RED SSS ELBA 132M  
S: RED TOPHAM PETERBILT 415B  
RED FLYING K PATRICK 85S  
RED TOPHAM MS BEULAH 845U  
RED TOPHAM MS BEULAH 657S

RED GOLD-BAR SCF NITRO K 112N  
RED MAJESTIC RUBICON N 124R  
RED BRA SIERRA 243M  
D: RED DWAJO LEMAY  
RED PREMIER PATRIOT 16  
RED R & M 16L LEMAY 113P  
RED CLAYSMORE LEMAY 52Z

	BW	WW	YW	MILK
EPD ACTUAL	82	771	1229	-
	1.1	34	50	16

A Peterbilt bull known as Spanky as he is known for his good attitude and playful personality. His grandam 113P is still working strong for us and is one of the direct Patriot 16 daughters still working. 34W has produced bulls that have sold in our On Target Bull & Female Sale. 2 females have also been sold to Six Mile and SRC Ranch Ltd. Spanky would be a good addition to any herd. Heifer Bull.



## RED DWAJO ICEMAN 80F

DJE 80F FEBRUARY 09 2018 #2042839

47

JUSTAMERE 253 LADDIE 436S  
RED NORTHERN ICE MAN 8U  
MDN MYSTERY PRIDE  
S: RED RSL ICEMAN 527C  
RED SIX MILE TROY 243T  
RED SPITTALBURN COUNTESS 927W  
RED SPITTALBURN COUNTESS 727T

RED FLYING K DYNAMITE 66L  
RED SHODEREE DYNAMITE 80N  
RED SHODEREE FREDIA 188K  
D: RED DWAJO LARKABA 97S  
RED SVR BAR CODE 2K  
RED DWAJO LARKABA 33M  
RED BLUE SPRUCE LARKABA 52H

	BW	WW	YW	MILK
EPD ACTUAL	82	732	1302	-
	2.2	26	53	22

Iceman 80F is a bull you don't want to miss out on, he ranks No#2 in yearly index with 115. His dam 97S has been a cow that keeps producing the good ones. She has been a premier dam since 2014 raising 5 bulls sold in Our bull sale and 2 females gone into purebred herds Thistle Ridge and Z Bar Angus. Some proven genetics here and an 82 BW to boot. Heifer bull.



## RED DWAJO STRONGHOLD 84F

DJE 84F FEBRUARY 09 2018 #2042838

48

RED LJT CITADEL 812  
RED TROTTERS STRONGHOLD 156  
RED LJT PEARL 579  
S: RED SPUR STRONGHOLD 2171C  
RED HCFA GRAVITY 601  
RED SSR GRAVITY'S LEAGUE Y217  
RED K2 DAISY BLOSSOM 506

RED CORNER CREEK CASH 2R  
RED SOO LINE REVOLUTION 8084  
RED SOO LINE RHONDA 5109  
D: RED DWAJO LASS 140Y  
RED GOLD-BAR MESSENGER 206M  
DWAJO CR LASS 74R  
CARRUTHERS LASS 6F

	BW	WW	YW	MILK
EPD ACTUAL	81	724	1197	-
	-0.1	39	49	12

One of the last Stronghold 2171C bulls we will have left to sell as he got injured and we won't have any calf's this year. His daughters are milking now they have capacity and real nice udders. A Paternal sister was the high selling heifer this year at Northern Select sale sold to Cheramie Viator of Texas; which is a lady that has an eye for cattle. 84F has an EPD for birth of -0.1. Definite heifer bull here.



## RED DWAJO STRONGHOLD 89F

DJE 89F FEBRUARY 11 2018 #2042842

49

RED LJT CITADEL 812  
RED TROTTERS STRONGHOLD 156  
RED LJT PEARL 579  
S: RED SPUR STRONGHOLD 2171C  
RED HCFA GRAVITY 601  
RED SSR GRAVITY'S LEAGUE Y217  
RED K2 DAISY BLOSSOM 506

HF PRAIRIE SMOKE 124T  
RED TR MISTICAL 548W  
RED U-2/TR DIAMOND MIST 489P  
D: RED DWAJO LUCY 58Z  
RED GOLD-BAR MESSENGER 206M  
RED DWAJO LUCY 62R  
RED DWAJO LUCY 12H

	BW	WW	YW	MILK
EPD ACTUAL	85	778	1366	-
	1.3	40	76	12

Stronghold 89F is a bull that started at 85lbs and has performed well since birth; 105 WW Index and a 119 YW index ranking No#1 for yearling weight gained. A maternal brother sold to Williscroft Bros in last years sale. 89F is in the top 10% for yearly weight EPD. Heifer bull with some growth.



## RED DWAJO JES PETERBILT 99F

JES 99F FEBRUARY 16 2018 #2042772

50

RED PIE GAME ON 9109  
RED SSS POKER FACE 136Y  
RED SSS ELBA 132M  
S: RED TOPHAM PETERBILT 415B  
RED FLYING K PATRICK 85S  
RED TOPHAM MS BEULAH 845U  
RED TOPHAM MS BEULAH 657S

RED LAZY MC DIVIDE 8J  
RED TER-RON CINCH 910L  
RED ALDER ABG HAWAMBA 10G  
D: RED REDRICH ROSETTE 78W  
RED SSS BIG SKY 430K  
RED REDRICH MISS ME NOT 72M  
RED TOWAW ROSETTE 72K

	BW	WW	YW	MILK
EPD ACTUAL	85	658	1204	-
	3.7	35	60	13

99F is a moderate sized bull with lots of depth and width. His mother 78W was bought from the Northern Sale as a heifer calf from Red Rich Farms. This cow is one of the deepest cows with have on farm. So, if you want a moderate bull sized bull with some easy flesh ability this would be the bull for you. Could be used on heifers.



## RED DWAJO STRONGHOLD 106F

DJE 106F FEBRUARY 21 2018 #2042853

51

RED LJT CITADEL 812  
RED TROTTERS STRONGHOLD 156  
RED LJT PEARL 579  
S: RED SPUR STRONGHOLD 2171C  
RED HCFA GRAVITY 601  
RED SSR GRAVITY'S LEAGUE Y217  
RED K2 DAISY BLOSSOM 506

RED CORNER CREEK CASH 2R  
RED SOO LINE REVOLUTION 8084  
RED SOO LINE RHONDA 5109  
D: RED DWAJO DINA 138Z  
RED SSS ATLAS 446Y  
RED LAZY MC DINA 10L  
RED BLUE SPRUCE DINA 201Z

	BW	WW	YW	MILK
EPD ACTUAL	83	747	1199	-
	1.7	40	59	13

Another Stronghold bull that will work well for your heifers 83 pounds out of a cow that has produced a bull to Neil Letts in last year's sale. Last Stronghold bull to sell. Heifer Bull.



## RED DWAJO ICEMAN 119F

DJE 119F MARCH 10 2018 APPLIED FOR



JUSTAMERE 253 LADDIE 436S  
RED NORTHERN ICE MAN 8U  
MDN MYSTERY PRIDE  
S: RED RSL ICEMAN 527C  
RED SIX MILE TROY 243T  
RED SPITTALBURN COUNTESS 927W  
RED SPITTALBURN COUNTESS 727T

RED VGW OLY 903  
RED BIEBER OLY Y390  
RED BIEBER TANYA 201W  
D: RED DWAJO LUCY 137B  
RED SVR BAR CODE 2K  
RED DWAJO LUCY 73N  
DWAJO LUCY 79K

	BW	WW	YW	MILK
EPD ACTUAL	92	722	1342	-
	0.1	28	49	22

119F's dam 137B has produced well for us but no surprise as she goes back to our Lucy cow family that has been one of the mainstays in our herd. His maternal grandam has been designated an Elite dam since 2008. We have kept one daughter in herd and a maternal son sold to the good people from Poplar Grove in last years sale.



## RED DWAJO NESTER 132F

DJE 132F MARCH 18 2018 #2061575



RED PIE GAME ON 9109  
RED SSS POKER FACE 136Y  
RED SSS ELBA 132M  
S: RED TOPHAM PETERBILT 415B  
RED FLYING K PATRICK 85S  
RED TOPHAM MS BEULAH 845U  
RED TOPHAM MS BEULAH 657S

RED TGA RED CR SAKE 3018N  
RED TGA CR SAKE 6005S  
RED TGA MISS RENEE 4028P  
D: RED DWAJO LUCY 520X  
EVERBLACK MASTERPLAN 007  
DWAJO LUCY 79K  
RED CLAYSMORE LUCY 11B

	BW	WW	YW	MILK
EPD ACTUAL	85	912	1356	-
	2.1	42	65	23

Nester is a bull that really took off after birth he was number 1 bull in WW with a 125 index, his dam 520X is another one of those good Lucy cows so no surprise that she works. A bull that really will put some pounds on your calves. Heifer Bull.

## RED DWAJO SEEKER 137F

DJE 137F MARCH 24 2018 #2072829



RED CLAY COLT 21X  
RED LONE STONE REVOLVER 138Z  
RED LONE STONE JENNA 95U  
S: RED CINDER RICOCHET 18C  
RED HB GENERAL 103N  
RED LONE STONE 103N LADY 18S  
RED MYALTA 104H POPPY 18P

SAYRE PATRIOT  
RED PREMIER PATRIOT 16  
CAMILLA BELLE 54D  
D: RED R & M 16L LEMAY 113P  
RED LINE DESIGNER 45R  
RED CLAYSMORE LEMAY 52Z  
RED CLAYSMORE LEMAY 28R

	BW	WW	YW	MILK
EPD ACTUAL	92	872	1288	-
	3.9	39	55	19

Well those of you that have been in the business for while will find this pedigree little interesting. 113P is a direct daughter of the Red Angus icon Premier Patriot 16. 113P has only had 2 daughters; DJE 34W dam of Spanky 75F who is in the bull sale and one daughter to Redrich Farms. Different sire group here Cinder Ricochet 18C, nice dark red bull.



# Dwajo Black Angus

## BAR-E-L CASSIDY 70C

YHB 70C FEBRUARY 18 2015 #1864862

RING CREEK BARDOLINE 69W  
RING CREEK BURL IVES 88Y  
HEATHER OF RING CREEK 447W  
S: RING CREEK FLYNN 25A  
BASIN AMBUSH 7980  
RING CREEK AMBUSH LADY 43T  
RING CREEK 6371 LADY 1P

GREENS PREMIUM 7578  
HF SMOKIN' ACES 105Y  
HF ERICA 26T  
D: BAR-E-L MAGNOLIA 209A  
PLAINVIEW SAUGAHATCHEE 31X  
BAR-E-L DUCHESS 119M  
BAR-E-L MAGNOLIA 143K

	BW	WW	YW	MILK
EPD ACTUAL	80	795	-	-
	3.4	40	66	23

A new sire group here for our repeat customers and largest sire group with 8 bulls on offer. Bar-E-L Cassidy 70C was a bull we purchased from Bar-E-L Angus in 2016 with a unique twist on paper. He sires well muscled, good footed, wide topped and have loads of eye appeal. He averaged 87 lbs for BW on the bulls at our farm.



## BORDER BUTTE FOUNDATION 15C

BRDR 15C JANUARY 15 2015 #1855006

CONNEALY FRONT PAGE 0228  
KESSLERS FRONTMAN R001  
KESSLERS BELL 0024  
S: MUSGRAVE FOUNDATION  
CONNEALY FINAL PRODUCT  
MCATL BLACKCAP JUARA 29-434  
MA BLACKCAP JUARA 434

HARB PENDLETON 765 J H  
21AR ROUNDUP 7005  
21AR BLACKBIRD LADY F645  
D: CUDLOBE COUNTESS 25X  
BOYD ON TARGET 1083  
CUDLOBE COUNTESS 5'07  
MIDNITE COUNTESS 75F

	BW	WW	YW	MILK
EPD ACTUAL	90	702	1303	-
	2.1	61	111	23

A bull we obtained from Border Butte Angus at Coutts, Ab. For his outcross pedigree and his overall makeup and great disposition. His EPD's are all way above average with huge WW and YW numbers. His bull's calves have averaged 85 lbs at our place and are an easy doing set of bulls with a good foot under them and loads of hair. His bulls last year were very well accepted by all.



## DWAJO REALLY WINDY 60C

DJE 60C FEBRUARY 8 2015 #1877920

AA R WINDY RIDGE 362  
AA R REALLY WINDY 1205  
AA R LADY KELTON 2170  
S: V D A R REALLY WINDY 4097  
VDAR ENTERPRISE 2059  
VDAR BLACKBIRD 2031  
VDAR ENVIOUS BLACKBIRD 6060

STEVENSON FORTUNE 425C  
CRESCENT CREEK FORTUNE 16H  
CRESCENT CREEK HEROINE 92B  
D: DWAJO ZARA 94K  
EVERBLACK MASTERPLAN 007  
DWAJO ZARA 6H  
DWAJO ZARA 2W

	BW	WW	YW	MILK
EPD ACTUAL	87	778	1264	-
	0.4	44	69	10

A homegrown ET bull that we decided to use to carry on the Zara 94K lineage, she was one of our best cows at the farm. His sire Really Windy 4097 is an outcross sire to most herds across the land. 60C averaged 83 lbs for his bulls and they are stamped with great feet, easy moving and overall complete bulls.



# Dwajo Black Angus

DWAJO CASSIDY 2F - LOT 55

## DWAJO CASSIDY 2F

DJE 2F JANUARY 17 2018 #2042774



RING CREEK BURL IVES 88Y  
RING CREEK FLYNN 25A  
RING CREEK AMBUSH LADY 43T  
S: BAR-E-L CASSIDY 70C  
HF SMOKIN' ACES 105Y  
BAR-E-L MAGNOLIA 209A  
BAR-E-L DUCHESS 119M

S A V NET WORTH 4200  
CLEGG NET WORTH 22W  
LLB TIP TOP 118K  
D: EVERBLACK KATHLEEN 27Z  
SOO LINE TANK 5108  
EVERBLACK KATHLEEN 22T  
EVERBLACK KATHLEEN 65P

	BW	WW	YW	MILK
EPD ACTUAL	88	732	1201	-
	2.6	43	71	21

This bull is out of our new exciting herdsire, Bar-E-L Cassidy 70C. His calves are wide, deep and looking very good. His dam 27Z has a nice udder and good feet. New genetics for our old and new customers. Could be Used on Heifers.



DWAJO JES TITAN 6F - LOT 56 (BOTH PHOTOS)

## DWAJO JES TITAN 6F

JES 6F JANUARY 19 2018 #2042765



KESSLERS FRONTMAN R001  
MUSGRAVE FOUNDATION  
MCATL BLACKCAP JUARA 29-434  
S: BORDER BUTTE FOUNDATION 15C  
21AR ROUNDUP 7005  
CUDLOBE COUNTESS 25X  
CUDLOBE COUNTESS 5'07

YOUNG DALE KNOCK OUT 134U  
YOUNG DALE YOUNG GUN 67Y  
YOUNG DALE POLLYANNA 30U  
D: DWAJO ERICA 72B  
GREENS CONNECTION  
DWAJO ERICA 27N  
LLB ROYAL ERICA 137E

	BW	WW	YW	MILK
EPD ACTUAL	79	812	1262	-
	1.8	50	90	22

Do you guys hear that echo coming from the hills? It's the crowds yelling come see Dwajo Jes Titan 6F! Titan is a supremely deep, wide, powerful bull with a lot to offer. He has a 79BW as well as a WW ratio of 111. Titan sits at the top 10% for WW and the top 10% for YW. 6F's mother comes out of a line of smooth fronted, perfect uddered cows, with high fertility. 72B goes back to my very first 4-H cow I used in 4-H "27N". I now have 5 females in my heard that go back to cow with an increasing number of that cow family as they make fantastic females. With this bull's fantastic genetic history and current performance; it really makes him a Titan of the bullpen! Heifer bull.

## DWAJO FIRE STARTER 11F

DJE 11F JANUARY 20 2018 #2043275

(57)

CUDLOBE IN FOCUS 5S  
CUDLOBE TOTAL FOCUS 6A  
CUDLOBE EXQUISITE LADY 69Y  
**S: DWAJO BLISS 15D**  
YOUNG DALE YOUNG GUN 67Y  
DWAJO JESTRESS 32B  
DWAJO JESTRESS 122T

RED U2 MISSION 61W  
GEIS MISSION 270'12  
GEIS BELLEMERE 948'09  
**D: HAZEL BLUFF GAM 56D**  
SOO LINE TRADITION 6020  
HAZEL BLUFF TRADITION 58X  
DWAJO GAMMER 31U

	BW	WW	YW	MILK
EPD ACTUAL	65	690	1242	
	0.3	44	71	12

A calf out of a 1st calver that has done very well from a BW of 65 lbs to where he is now. In the top 9% Epd for calving ease. His dam is a nice size cow with some thickness. Heifer Bull.



## DWAJO FOUNDATION 27F

DJE 27F JANUARY 26 2018 #2042793

(58)

KESSLERS FRONTMAN R001  
MUSGRAVE FOUNDATION  
MCATL BLACKCAP JUARA 29-434  
**S: BORDER BUTTE FOUNDATION 15C**  
21AR ROUNDUP 7005  
CUDLOBE COUNTESS 25X  
CUDLOBE COUNTESS 5'07

MOGCK SURE SHOT  
KG SURE SHOT 1186  
KG EISA EVERGREEN 9426  
**D: DWAJO ZARA 78B**  
GDAR DUTCH 1508  
DWAJO ZARA 144T  
DWAJO ZARA 53N

	BW	WW	YW	MILK
EPD ACTUAL	90	862	1261	-
	3.5	59	94	25

Here is a deep, easy doing bull that has loads of performance. He is in the Top 6% for WW and Top 5% for YW for the breed. Goes back to the Zara Cow Family which goes back to our original herd in 1983. The cow family is still here because it works, this bull is no different. His dam has produced 2 bulls in previous sales to Chris and Janet Veltman and Stypula Farms.

## DWAJO CASSIDY 29F

DJE 29F JANUARY 26 2018 #2042794

(59)

RING CREEK BURL IVES 88Y  
RING CREEK FLYNN 25A  
RING CREEK AMBUSH LADY 43T  
**S: BAR-E-L CASSIDY 70C**  
HF SMOKIN' ACES 105Y  
BAR-E-L MAGNOLIA 209A  
BAR-E-L DUCHESS 119M

EARLEY GRID POWER 52P  
EARLEY GRID POWER 158S  
EARLEY BARBARA 15M  
**D: DWAJO HENRIETTA 119A**  
BOYD NEW DAY 8005  
JL HENRIETTA 06 28  
HENRIETTA OF PEAK DOT 795P

	BW	WW	YW	MILK
EPD ACTUAL	90	748	1252	-
	3.3	40	70	26

A nice thick, wide topped Cassidy son. His dam 119A has produced 2 bulls to Stypula Farms and Steve Hodgetts and also a heifer to Joe Schulz. Looking for a bull to put some extra milk into your cows; his dam is in the Top 2% for Milk Epd.



## DWAJO CASSIDY 31F

DJE 31F JANUARY 26 2018 #2042796

(60)

RING CREEK BURL IVES 88Y  
RING CREEK FLYNN 25A  
RING CREEK AMBUSH LADY 43T  
S: BAR-E-L CASSIDY 70C  
HF SMOKIN' ACES 105Y  
BAR-E-L MAGNOLIA 209A  
BAR-E-L DUCHESS 119M

SIX MILE FINAL ANSWER 701T  
DWAJO FINAL DOMINATION 33X  
DWAJO ZARA 144T  
D: DWAJO GAMMER 107Z  
DOUBLE D QUANTUM 4R  
DWAJO GAMMER 113X  
DWAJO GAMMER 9N

	BW	WW	YW	MILK
EPD ACTUAL	92	824	1163	-
	4.4	46	65	21

The first bull that 107Z has every had and he is a good one. We have had this cow family for 25 years; who originated from Minburn Angus. A bull that could add longevity to your herd like it has done for us.



## DWAJO REALLY WINDY 38F

DJE 38F JANUARY 28 2018 #2042807

(61)

A A R REALLY WINDY 1205  
V D A R REALLY WINDY 4097  
VDAR BLACKBIRD 2031  
S: DWAJO REALLY WINDY 60C  
CRESCENT CREEK FORTUNE 16H  
DWAJO ZARA 94K  
DWAJO ZARA 6H  
DUTCH 744 J V  
GDAR DUTCH 1508  
GDAR BLACKCAP LADY 6402  
D: DWAJO PRIDE 52S  
WIWA CREEK TREND 51'93  
DWAJO PRIDE 26F  
DWAJO PRIDE 52C

	BW	WW	YW	MILK
EPD ACTUAL	84	736	1279	-
	1.8	37	67	16

This is one handsome Really Windy bull with the typical front end and thickness that delivers performance. His 13-year-old dam is still producing, with 4 bulls in the On Target Bull sale and 2 females into the purebred herds. There is some predictability here; if you are looking for heifer bulls, the Really Windy bulls are the bulls to buy. Heifer Bull.



## DWAJO JES CASSIDY 49F

JES 49F JANUARY 31 2018 #2042770

(62)

RING CREEK BURL IVES 88Y  
RING CREEK FLYNN 25A  
RING CREEK AMBUSH LADY 43T  
S: BAR-E-L CASSIDY 70C  
HF SMOKIN' ACES 105Y  
BAR-E-L MAGNOLIA 209A  
BAR-E-L DUCHESS 119M  
CONNEALY REFLECTION  
MCATL REFLECTION 120-577  
BALA BELL 577 T M  
D: BLAIR'S ERICA 201A  
BROCKHILL PROPHECY 4P  
SOO LINE ERICA 8334  
GEIS ERICA 117'93

	BW	WW	YW	MILK
EPD ACTUAL	92	713	1224	-
	2.4	37	67	24

49F is a nice wide topped bull with a smooth shoulder that comes out of the 1st calf crop from our Bar-E-L Cassidy Bull. The cow was purchased from Blair's as a heifer calf and has been a good producer ever since. She has had 4 bull calves which have all been sold through our bull sale and have gone out there and did an excellent job. The cow has an excellent udder and produces some high performance calves no matter what you breed her to.

## DWAJO FOUNDATION 51F

DJE 51F FEBRUARY 01 2018 #2042814



KESSLERS FRONTMAN R001  
MUSGRAVE FOUNDATION  
MCATL BLACKCAP JUARA 29-434  
**S: BORDER BUTTE FOUNDATION 15C**  
21AR ROUNDUP 7005  
CUDLOBE COUNTESS 25X  
CUDLOBE COUNTESS 5'07

SITZ UPWARD 307R  
JL UPWARD 1181  
JL HEROINE 07079  
**D: DWAJO PRIDE 56B**  
H A IMAGE MAKER 0415  
DWAJO PRIDE 12R  
DWAJO PRIDE 26F

	BW	WW	YW	MILK
EPD ACTUAL	90	845	1322	-
	2.2	60	98	26

A Foundation bull calf with below Average birth EPD and above average for WW, YW and Milk. This guy is rated #2 with a WW Ratio of 114. A bull with all the numbers lining up and the eye appeal to go with it.



## DWAJO TORNADO 59F

DJE 59F FEBRUARY 2 2018 APPLIED FOR



AA R WINDY RIDGE 362  
AA R REALLY WINDY 1205  
AA R LADY KELTON 2170  
**S: V D A R REALLY WINDY 4097**  
VDAR ENTERPRISE 2059  
VDAR BLACKBIRD 2031  
VDAR ENVIOUS BLACKBIRD 6060

STEVENSON FORTUNE 425C  
CRESCENT CREEK FORTUNE 16H  
CRESCENT CREEK HEROINE 92B  
**D: DWAJO ZARA 94K**  
EVERBLACK MASTERPLAN 007  
DWAJO ZARA 6H  
DWAJO ZARA 2W

	BW	WW	YW	MILK
EPD ACTUAL	81	688	1237	-
	0.4	41	68	10

A cool embryo calf that is a full brother to our herdbull, Dwajo Really Windy 60C. What a job 60C is doing for us; we are calving out his 1st daughters and they have nice front ends, nice square udders and deep bodied. This bull will pass on the same traits, you won't be disappointed. Heifer Bull.



## DWAJO WINDY 63F

DJE 63F FEBRUARY 03 2018 #2042821



AA R REALLY WINDY 1205  
V D A R REALLY WINDY 4097  
VDAR BLACKBIRD 2031  
**S: DWAJO REALLY WINDY 60C**  
CRESCENT CREEK FORTUNE 16H  
DWAJO ZARA 94K  
DWAJO ZARA 6H

EARLEY GRID POWER 52P  
EARLEY GRID POWER 158S  
EARLEY BARBARA 15M  
**D: DWAJO BLACKBIRD 66A**  
GEIS KODIAK 34'07  
WAVENY BLACKBIRD 16W  
MINBURN BLACKBIRD 135N

	BW	WW	YW	MILK
EPD ACTUAL	87	680	1232	-
	1.1	37	71	17

A nice smooth fronted bull that has calving ease written all over him. His dam has produced one bull to Mexico and a heifer calf to Michael Podolak. Heifer Bull.





## DWAJO CASSIDY 67F

DJE 67F FEBRUARY 04 2018 #2042824



RING CREEK BURL IVES 88Y  
RING CREEK FLYNN 25A  
RING CREEK AMBUSH LADY 43T  
S: **BAR-E-L CASSIDY 70C**  
HF SMOKIN' ACES 105Y  
BAR-E-L MAGNOLIA 209A  
BAR-E-L DUCHESS 119M

C H QUANTUM 3330  
DOUBLE D QUANTUM 4R  
G H Y SANTELLA 9M9 264  
D: **DWAJO GAMMER 113X**  
MC BEE WMR SUPER X 745  
DWAJO GAMMER 9N  
DWAJO GAMMER 55H

	BW	WW	YW	MILK
EPD ACTUAL	86	678	1232	-
	1.1	37	71	19

Another Cassidy son with the same traits as his brothers, nice thick calves. 113X has produced a bull to Alex Hoy and 2 females to purebred herds and 1 daughter retained in herd, DJE Gammer 107Z, the dam of the DJE 31F bull in this sale. His grandam 9N was an Elite dam.



## DWAJO CASSIDY 73F

DJE 73F FEBRUARY 06 2018 #2042831



RING CREEK BURL IVES 88Y  
RING CREEK FLYNN 25A  
RING CREEK AMBUSH LADY 43T  
S: **BAR-E-L CASSIDY 70C**  
HF SMOKIN' ACES 105Y  
BAR-E-L MAGNOLIA 209A  
BAR-E-L DUCHESS 119M

SITZ TRADITION RLS 8702  
SOO LINE TRADITION 6020  
H A BELETTA 0219  
D: **DWAJO GAMMER 63W**  
GDAR DUTCH 1508  
DWAJO GAMMER 142S  
DWAJO GAMMER 55H

	BW	WW	YW	MILK
EPD ACTUAL	92	726	1258	-
	3.0	36	71	22

Here is a good thick bull with lots of performance; his dam 63N is a big, large volume cow with a great udder. She has produced 3 bulls thru the On Target Bull Sale.



## DWAJO FOUNDATION 74F

DJE 74F FEBRUARY 06 2018 #2042830



KESSLERS FRONTMAN R001  
MUSGRAVE FOUNDATION  
MCATL BLACKCAP JUARA 29-434  
S: **BORDER BUTTE FOUNDATION 15C**  
21AR ROUNDUP 7005  
CUDLOBE COUNTESS 25X  
CUDLOBE COUNTESS 5'07

SFL FORT ROCK 11F  
SAR FORT ROCK 151R  
SAR QUEEN MOTHER 24J  
D: **DWAJO LYNN 142X**  
LANDMARK NEW FRONTIER  
PJ'S LYNN 31'97  
LYNN OF LARKSPUR 8W

	BW	WW	YW	MILK
EPD ACTUAL	90	698	1180	-
	4.1	44	80	25

74F is a nice Foundation bull with a good producing dam. 142X has produced 3 heifers to Jacob Onyschuk, Rustic Lily and Schulz Angus. A bull to Marvin & Barb Branden. A cow that keeps producing, don't matter what she is bred to.



## DWAJO REALLY WINDY 78F

DJE 78F FEBRUARY 08 2018 #2042834

(69)

A A R REALLY WINDY 1205  
V D A R REALLY WINDY 4097  
VDAR BLACKBIRD 2031  
S: DWAJO REALLY WINDY 60C  
CRESCENT CREEK FORTUNE 16H  
DWAJO ZARA 94K  
DWAJO ZARA 6H  
MOGCK SURE SHOT  
KG SURE SHOT 1186  
KG EISA EVERGREEN 9426  
D: DWAJO JESTRESS 220C  
SOO LINE TRADITION 6020  
DWAJO JESTRESS 82X  
DWAJO JESTRESS 122T

	BW	WW	YW	MILK
EPD ACTUAL	89	738	1279	-
	2.1	45	79	16

A good calving ease bull out of our Really Windy 60C herdsire that has a quiet disposition. His young dam has produced a bull to John Paterson in last year's sale. 220C is on her way to becoming another great producer. Heifer Bull.

## DWAJO CASSIDY 82F

DJE 82F FEBRUARY 09 2018 #2042837

(70)

RING CREEK BURL IVES 88Y  
RING CREEK FLYNN 25A  
RING CREEK AMBUSH LADY 43T  
S: BAR-E-L CASSIDY 70C  
HF SMOKIN' ACES 105Y  
BAR-E-L MAGNOLIA 209A  
BAR-E-L DUCHESS 119M  
GUMBO GULCH CREED 94S  
DMM MASS APPEAL 50X  
DMM DYNA LASS 13N  
D: DWAJO TIBBIE 53Z  
GDAR DUTCH 1508  
DWAJO TIBBIE 18S  
DWAJO TIBBIE 2E

	BW	WW	YW	MILK
EPD ACTUAL	85	696	1236	-
	2.4	32	62	21

Another Cassidy Cookie Cutter bull; they are all made the same, thick and good. His dam is a beautiful cow with a nice udder and feet. She has a good disposition and makes a herdsire anytime. 53Z has produced a bull to Ashley Shrode, a heifer to Schulz Angus and one heifer kept in herd. Heifer Bull.



## DWAJO FOUNDATION 83F

DJE 83F FEBRUARY 09 2018 #2042835

(71)

KESSLERS FRONTMAN R001  
MUSGRAVE FOUNDATION  
MCATL BLACKCAP JUARA 29-434  
S: BORDER BUTTE FOUNDATION  
21AR ROUNDUP 7005  
CUDLOBE COUNTESS 25X  
CUDLOBE COUNTESS 5'07  
S A V ELIMINATOR 9105  
JL ELI 2126  
JL HOBSON 06 71  
D: DWAJO QUEEN GEM 11C  
GDAR DUTCH 1508  
DWAJO QUEEN GEM 62P  
MINBURN QUEEN GEM 71B

	BW	WW	YW	MILK
EPD ACTUAL	79	787	1299	-
	0.8	45	87	25

A Foundation out of a second calver that has the thick top, depth and great feet that the old bull has. A maternal brother sold in last year's sale to Dave Salmon & K Deen Angus. Proven at a young age that she can get it done. Heifer Bull.





### DWAJO CASSIDY 85F

DJE 85F FEBRUARY 10 2018 #2042840

72

RING CREEK BURL IVES 88Y  
RING CREEK FLYNN 25A  
RING CREEK AMBUSH LADY 43T  
S: BAR-E-L CASSIDY 70C  
HF SMOKIN' ACES 105Y  
BAR-E-L MAGNOLIA 209A  
BAR-E-L DUCHESS 119M

BARSTOW CASH  
BAR R BANKROLL 3036  
SILVEIRAS ELBA 4328  
D: DWAJO JESTRESS 100D  
NORTH FORK PRODIGY 9041  
DWAJO JESTRESS 59M  
DWAJO JESTRESS 17F

	BW	WW	YW	MILK
EPD ACTUAL	82	726	1271	-
	4.5	45	73	20

A Cassidy bull out of a 1st calver; this young Bank Roll cow has a great udder and has done very well for us. Could be Used on Heifers.

### DWAJO GRAND SLAM 122F

DJE 122F MARCH 12 2018 #2042857

73

VISIONTOPLINE ROYAL STOCKMAN  
VISION UNANIMOUS 1418  
VISION EDELLA 665  
S: NORTHERN VIEW GRAND SLAM 107D  
CONNEALY THUNDER  
NORTHERN VIEW PRINCESS 103A  
NORTHERN VIEW PRINCESS 73U

DUTCH 744 J V  
GDAR DUTCH 1508  
GDAR BLACKCAP LADY 6402  
D: DWAJO BARBAMERE 11B  
ATLASTA BB TRAVELER 6807 047T  
DWAJO BARBAMERE 5X  
ATLASTA BB 143U

	BW	WW	YW	MILK
EPD ACTUAL	85	720	1254	-
	1.3	40	81	16

This young bull is one of the Grand Slam bulls we will be offering because we lost the sire. He has great disposition and a nice front end with some thickness. His dam is a direct Dutch daughter and we have very few of them anymore. They make great cows from a sire we had in 2001. Heifer Bull.



DWAJO GRAND SLAM 122F  
LOT 73



DWAJO GRAND SLAM 122F  
SIRE OF LOTS 73 & 74

### DWAJO GRAND SLAM 124F

DJE 124F MARCH 13 2018 #2042858

74

VISIONTOPLINE ROYAL STOCKMAN  
VISION UNANIMOUS 1418  
VISION EDELLA 665  
S: NORTHERN VIEW GRAND SLAM 107D  
CONNEALY THUNDER  
NORTHERN VIEW PRINCESS 103A  
NORTHERN VIEW PRINCESS 73U

S A V ELIMINATOR 9105  
JL ELI 2126  
JL HOBSON 06 71  
D: DWAJO GAMMER 36C  
GDAR DUTCH 1508  
DWAJO GAMMER 83T  
DWAJO GAMMER 55H

	BW	WW	YW	MILK
EPD ACTUAL	89	811	1289	-
	2.8	45	86	22

This Grand Slam son is a heifer bull with some punch. Has a WW Ratio of 109; his grandam 83T is an Elite dam who has produced 6 bulls that went thru this bull sale. Some good proven genetics here. Heifer Bull.



## DWAJO WINDY 129F

DJE 129F MARCH 15 2018 APPLIED FOR



AA R REALLY WINDY 1205  
V D A R REALLY WINDY 4097  
VDAR BLACKBIRD 2031  
S: DWAJO REALLY WINDY 60C  
CRESCENT CREEK FORTUNE 16H  
DWAJO ZARA 94K  
DWAJO ZARA 6H

EARLEY GRID POWER 52P  
EARLEY GRID POWER 158S  
EARLEY BARBARA 15M  
D: DWAJO JESTRESS 62A  
LOOKOUT VALUE 402P  
DWAJO JESTRESS 122T  
DWAJO JESTRESS 153R

EPD ACTUAL	BW	WW	YW	MILK
	87	702	1319	-
	1.6	44	72	17

The youngest black bull in the sale; this fellow has a moderate BW and some serious thickness. His dam 62A has produced a couple bulls that have went thru this very ring. He deserves a serious look. Heifer Bull.



## Dwajo Heifers



DWAJO REALLY WINDY 60C - SIRE OF LOT 76

## DWAJO BARBARAME 32F

DJE 32F JANUARY 27 2018 #2042802



AA R REALLY WINDY 1205  
V D A R REALLY WINDY 4097  
VDAR BLACKBIRD 2031  
S: DWAJO REALLY WINDY 60C  
CRESCENT CREEK FORTUNE 16H  
DWAJO ZARA 94K  
DWAJO ZARA 6H

D H D TRAVELER 6807  
ATLANTA BB TRAVELER 6807 047T  
LEACHMAN WENDY 9031  
D: DWAJO BARBARAMERE 5X  
KBJ SPECIAL RUSS 214S  
ATLANTA BB 143U  
BB BARBARAMERE NELL 24S

EPD ACTUAL	BW	WW	YW	MILK
	84	662	-	-
	1.6	40	66	10

We are calving out the Windy heifers this year and they are smooth fronted with picture perfect udders. A daughter of 5X has a Grand Slam bull in the bull sale this year and he is quite the looker. 32F is a heifer that will definitely work for you.



DWAJO BARBARAME 32F - LOT 76

## DWAJO ZARA 45F

DJE 45F JANUARY 30 2018 #2042809



VISIONTOPLINE ROYAL STOCKMAN  
VISION UNANIMOUS 1418  
VISION EDELLA 665  
S: NORTHERN VIEW GRAND SLAM 107D  
CONNEALY THUNDER  
NORTHERN VIEW PRINCESS 103A  
NORTHERN VIEW PRINCESS 73U

CUDLOBE IN FOCUS 5S  
CUDLOBE TOTAL FOCUS 6A  
CUDLOBE EXQUISITE LADY 69Y  
D: DWAJO ZARA 11D  
DWAJO DUTCH 65' 68S  
DWAJO ZARA 5A  
DWAJO ZARA 94K

	BW	WW	YW	MILK
EPD ACTUAL	82	720	-	-
	3.1	60	106	19

When we decided to put heifers in the On Target Sale again; we wanted to put some heifers with different sire pedigrees and top end heifers of our herd to represent what we have at Dwajo. This Zara heifer is a tough one to put up for sale. We only had one calf crop out of Grand Slam and he left us very nice set of calves. 45F is out of the same cow family as our Windy bull and one of the original cow families we started with in 1983. So, look at this heifer and don't miss out on some great genetics. You could hang a halter on her or just let her raise calves as the front pasture kind.



## DWAJO JES TIBBIE 55F

JES 55F FEBRUARY 01 2018 #2042771



KESSLERS FRONTMAN R001  
MUSGRAVE FOUNDATION  
MCATL BLACKCAP JUARA 29-434  
S: BORDER BUTTE FOUNDATION 15C  
21AR ROUNDUP 7005  
CUDLOBE COUNTESS 25X  
CUDLOBE COUNTESS 5'07

WHITESTONE WIDESPREAD MB  
PRIME TIME GOWDY'S CONVOY  
ADA NEPTUNE HOLLY  
D: HRH TIBBIE 82Y  
DIAMOND T WARRIOR 01'02  
DIAMOND T TIBBIE 165'05  
DIAMOND TIBBIE'S 365 65'02

	BW	WW	YW	MILK
EPD ACTUAL	85	715	-	-
	3	54	95	21

55F is a big fancy powerful heifer with a lot of style. Foundations have excellent feet and depth to them. The mother 82Y was bought from Bob Hahn from the Northern Select sale as heifer calf. The cow has been a good producer with a good udder. The calves have been consistent high performance calves out of that cow.



## DWAJO PRIDE 87F

DJE 87F FEBRUARY 11 2018 #2042843



RING CREEK BURL IVES 88Y  
RING CREEK FLYNN 25A  
RING CREEK AMBUSH LADY 43T  
S: BAR-E-L CASSIDY 70C  
HF SMOKIN' ACES 105Y  
BAR-E-L MAGNOLIA 209A  
BAR-E-L DUCHESS 119M

DWAJO DUTCH 65P  
DWAJO DUTCH 65' 68S  
DWAJO ANNIE K 46L  
D: DWAJO PRIDE 24X  
H A IMAGE MAKER 0415  
DWAJO PRIDE 12R  
DWAJO PRIDE 26F

	BW	WW	YW	MILK
EPD ACTUAL	92	660	-	-
	4.3	40	69	25

This will be the first Cassidy heifer calf to sell for us. We bought Cassidy with JW Cattle Co from Bar-E-L for his depth of body, lots of hair, and maternal traits which he has passed on to 87F. The dam 24X is out of the Dutch family that left us some really nice females. 24X produced a couple bulls that sold through our On-Target Sale. Don't miss out on some new and proven genetics.



## RED DWAJO AMBER 12F

DJE 12F JANUARY 20 2018 #2042782

(80)

RED LJT CITADEL 812  
RED TROTTERS STRONGHOLD 156  
RED LJT PEARL 579

S: RED SPUR STRONGHOLD 2171C

RED HCFA GRAVITY 601  
RED SSR GRAVITY'S LEAGUE Y217  
RED K2 DAISY BLOSSOM 506

RED TGA RED CR SAKE 3018N

RED TGA CR SAKE 6005S

RED TGA MISS RENEE 4028P

D: RED DWAJO AMBER 6Y

RED BCAR WILD CARD

RED DWAJO AMBER 43U

RED TOWAW AMBER 155K

	BW	WW	YW	MILK
EPD ACTUAL	87	692	-	-
	1.2	33	59	20

A Stronghold heifer that will be the last one to sell out of him as we lost him last year. 12F is out of one of our top end cows, 6Y has produced 2 Reserve Int Champion bull calves at Farm Fair which one is a full brother to 12F that sold to K6 Farms. The Strongholds have made some very nice replacements for us. Don't miss out on some proven genetics.



RED SPUR STRONGHOLD 2171C  
SIRE OF LOT 80



RED DWAJO RAWHIDE 67D  
MATERNAL BROTHER OF LOT 80

## RED DWAJO JILL 35F

DJE 35F JANUARY 27 2018 #2042800

(81)

JUSTAMERE 253 LADDIE 436S

RED NORTHERN ICE MAN 8U

MDN MYSTERY PRIDE

S: RED RSL ICEMAN 527C

RED SIX MILE TROY 243T

RED SPITTALBURN COUNTESS 927W

RED SPITTALBURN COUNTESS 727T

RED SOO LINE MR H0904 7076

RED TER-RON WALLACE 142W

RED TER-RON BOBBIE 93T

D: RED LAURON JILL 123B

RED LAZY R C MONTE CARLO 375N

RED LAURON JILL 27S

RED LAURON JILL 45P

	BW	WW	YW	MILK
EPD ACTUAL	93	697	-	-
	4.6	30	50	20

This is the first Iceman heifer to sell and she is out of a cow we bought from good people at Lauron, 123B produced a top end heifer that sold to Brooklyn Holt out of the Northern Select Sale. RSL Iceman's dam is a cow with a great udder and foot and will pass on to 35F. Nice replacement heifer here.

## RED DWAJO AMBER 62F

DJE 62F FEBRUARY 02 2018 #2042820

(82)

RED PIE GAME ON 9109

RED SSS POKER FACE 136Y

RED SSS ELBA 132M

S: RED TOPHAM PETERBILT 415B

RED FLYING K PATRICK 85S

RED TOPHAM MS BEULAH 845U

RED TOPHAM MS BEULAH 657S

BCAR RANCHER 8'00

RED BCAR WILD CARD

BREED CREEK PRIDE 33F 21'98

D: RED DWAJO AMBER 43U

RED CC EXPANSION 5E

RED TOWAW AMBER 155K

RED BAR-V 6N AMBER 166A

	BW	WW	YW	MILK
EPD ACTUAL	90	719	-	-
	4	41	75	17

The Peterbilt heifers have turned out well for us, one placed 3rd in the heifer parade at Red Round Up and selling to Isabella Mackenzie of Brylor Ranch. They have real nice-looking udders and a real nice foot under them. 43U has produced 2 heifers in herd one of which is the dam of 12F and one heifer to Mexico. Amber 62F is dark red with lots of hair and a excellent foot. A heifer that could be a maintain in any herd.





## AngusONE Genetic Evaluation

Please note that the EPDs listed in this sale catalogue are the product of the new Canadian AngusONE Genetic Evaluation. These EPDs are calculated by Angus Genetics Inc in partnership with the American Angus Association. Therefore, EPDs for Canadian Red Angus, Canadian Black Angus, and American Black Angus animals are directly comparable to each other. This is a completely new base for Canadian Red Angus however, therefore, please be advised that the EPDs are not comparable to last year's EPDs for Red Angus. These EPDs are on a completely different scale, so please familiarize your selves with the new Breed Average and with the new threshold number for traits of importance to you. The new AngusONE breed averages are shown below to help you adjust to the new base. Percentile rank graphs for each animal are easy to use and available at [www.cdnangus.ca](http://www.cdnangus.ca). The right EPD for you will depend on your cow herd, your management, and your breeding goals. For more information on using EPDs please contact your Association, the Canadian Angus Association, at 1-888-571-3580, and for more information about the genetics offered in this catalogue and what might best suit your breeding needs please contact the seller.

### Average Black EPDs for all Calves born in 2018

### Average Red EPDs for all Calves born in 2018

	Birth Weight	Weaning Weight	Yearling Weight	Milk	Total Maternal	Scrotal Circ.	Calving Ease Direct	Calving Ease Mat.	Marbling	REA	Fat	Carcass Weight
EPD	+2.3 +1.2	+45 +35	+78 +58	+21 +19	+43 +36	+0.72 +0.58	+3.0 +2.4	+7.0 +5.6	+0.36 +0.23	+0.40 +0.33	+0.013 +0.003	+32 +20

## FARMFAIR INTERNATIONAL TOUR AT DWAJO ANGUS



*We would like to thank the local businesses we deal with for their generosity.  
Your support is greatly appreciated!*

**CO-OP**  
**Pembina West Co-op**  
 P. O. Box 4040, 4903 - 49 Street  
 Barrhead AB T7N 1A1

**CAROL CALDWELL**  
 Feed & Ag Manager  
 Home Centre

Business 780.674.2201  
 Ext. 307  
 Fax 780.674.5598

www.pembinawestcoop.ca feed@pwcoop.ca

**Fountain Tire**  
**Justin Grynke**  
 Owner/ Manager  
 5811 - 49 Street  
 Barrhead, AB T7N 1A5

justin.grynke@fountaintire.com  
 www.fountaintire.com

Phone 780.674.6151  
 Fax 780.674.2800

**GOODYEAR** BEST MANAGED COMPANIES

**Canadian Farm Insurance Corp.**  
 Phone: 780-447-3276  
 Fax: 780-733-7724  
 Direct: 780-733-7715  
 Cell: 780-318-3636

**MONICA CZECH**  
 302, 13220 St. Albert Trail NW, Edmonton, AB T5L 4W1  
 mczech@cdnfarmins.com www.cdnfarmins.com

Livestock Insurance

**GRIZZLY TRAIL MOTORS**  
 Chevrolet • Buick • GMC  
 6201 - 49 Street, Box 4497, Barrhead, Alberta T7N 1A4

**JEFF BEGERT**  
 Parts Manager  
 Email: jbegert@grizzlytrail.com

Bus: 780-674-2236  
 Fax: 780-674-4657

THANK YOU TO MONICA CZECH FROM  
 CANADIAN FARM INSURANCE FOR SUPPLYING  
 THE COFFEE AND DONUTS!

**RAYDAD FARMS**  
**Custom Silaging**

**RAYMOND MARQUETTE**  
 Ph: 780-674-4556  
 Cell: 780-307-4097

RR#1 WESTLOCK, AB T7P 2P9

**JF**  
**Jullion & Fluet Accounting Inc.**  
 Allan Fluet, Owner  
 Ph: 780-674-2436  
 F: 780-674-3425  
 E: allan@jullionfluet.com

5020 Elevator Road  
 Box 4435  
 Barrhead, AB  
 T7N 1A3

# Meet our Agriculture Services Team

We know that farming is more than a business – it's a way of life. We are committed to serving Canada's farm communities by providing flexible financial solutions that let you get on with the business of farming. We'll take the time necessary to understand your unique needs. Together we can meet today's challenges and anticipate tomorrow's opportunities.



## Kelsey Thompson

Account Manager  
Barrhead, Westlock, Mayerthorpe  
and surrounding communities  
780-674-2216 ext.306  
kelsey.s.thompson@td.com



## Corinne Olthuis

Account Manager, Small Business  
Barrhead and surrounding communities  
780-674-2216 ext. 302  
corinne.olthuis@td.com



## Denise Craig

Account Manager, Small Business  
Barrhead and surrounding communities  
780-674-2216 ext. 300  
denise.craig@td.com

Located at: 5037-50 St. Barrhead



The TD logo and other trade-marks are the property of The Toronto-Dominion Bank.

M05338 (0415)

Pedigreed growers of Barley & Oats

**ANDERSON SEED GROWERS**

Ken or Evelyn Anderson  
RR 1  
Barrhead, AB  
T7N 1N2

Phone: 780 674 5670  
Fax: 780 674 6612  
Email: asgseed@xplornet.com

**FRESON BROS.**

**Aaron Coutts**  
Store Manager

PH: 780-674-2011  
FAX: 780-674-3556

ACOUTTS@FRESON.COM

5020 - 49 STREET  
BARRHEAD, AB, T7N 1G4

www.freson.com

WELCOME TO FRESON BROS.  
WELCOME HOME.

RESIDENTIAL • COMMERCIAL  
INDUSTRIAL

**Barr Construction (1978) Ltd.**  
Box 4217  
BARRHEAD, ALBERTA T7N 1A2

barr02@telus.net  
Jim Gottschalk

BUS: 780-674-2194  
RES: 780-674-2912  
FAX: 780-674-6966

**WVC** Westlock Veterinary Center

*For all your herd health needs!*

Ph: 780-349-3663  
24 hr Emergency Service  
www.westlockvetcenter.com

BUS.: (780) 674-6199  
RES.: (780) 674-4361

FAX: (780) 674-2917

**LFA BARRHEAD**

PETROLEUM & LUBES  
CARDLOCK & RETAIL PUMPS

C/O ROD & LORRAINE JOHNSON

BOX 4515  
6102 - 48 ST.

BARRHEAD, ALBERTA  
T7N 1A4

# Custom Corral Cleaning

**Tim Semler (780) 307-5053** Po Box 4296  
Barrhead AB T7N 1A3



# K & D Custom Meats LTD

Specializing in Farm & Wild Game Processing,  
Custom Cutting, Custom Sausage, Jerky, &  
Smoked Goods

Location: 59109 Range Road 35  
Mailing Address: R.R#3 Barrhead, Alberta, T7N-1N4  
Phone: 780-284-3072 or 780-305-7511  
E-Mail: KandDcustommeatsltd@gmail.com  
Facebook: K & D Custom Meats LTD



# SCH TRAILERS

**Steve & Connie Hodgetts**

RR #2  
Barrhead, AB

Sales of:

- Aluminum Sled/ATV/UTV Trailers • Flat Deck/Car/Stock & Cargo Trailers
- Aluminum Truck Decks & Custom Order Trailers

Ph/Fax: (780) 674-5550 Website: [www.schtrailers.com](http://www.schtrailers.com)

# Your Animal's First Choice



## BARR-NORTH

VETERINARY SERVICES LTD.

**Dr. Cera Bowyer  
Dr. Chris Bowyer  
Dr. Tanya Knittig  
Dr. Derk Pierik  
Dr. Jason Schonknecht**

**780-674-2100**  
24 Hour Emergency Service

Box 4279 6302 - 49 st.  
Barrhead, AB T7N 1A3  
Fax: 780-674-2157 | [barrnorthvet.com](http://barrnorthvet.com)

[www.embroiderydenbhd.com](http://www.embroiderydenbhd.com)  
[k\\_embden@telus.net](mailto:k_embden@telus.net)

# EMBROIDERY DEN

embroidery • silk screening • dtg printing • promotions

P: 780-674-6401 F: 780-674-6402  
Box 4115 5009D-51 Street  
Barrhead, AB T7N 1A1

# KESLL WELDING & INSPECTION INC

**Kenneth C Emery**  
[kcemery22@gmail.com](mailto:kcemery22@gmail.com)

51120 Range Road 224  
Sherwood Park, AB T8C 1H1

780 914-1479

 A Canadian Tradition of Animal Nutrition Solutions | Une Tradition Canadienne de Solutions en Nutrition Animale



# Masterfeeds®

Doug Roxburgh an **Altech®** company  
(403) 896-5222  
[droxburgh@masterfeeds.com](mailto:droxburgh@masterfeeds.com)

# Creating more value together.

- Grower/Finisher Supplements • Bull Rations
- Creep Feeds • Hi-Range™ Mineral Program

**Shur-Gain Trow Nutrition Sales Nutritionists**  
Justin Rosadiuk Marius Labentowicz  
780.379.0141 780.975.7743

 9415 - 109 Street  
Westlock, AB  
780-349-5886

 **trow nutrition**  
a Nutreco company





**LOT 11 - BLI EASTON 757E**



**LOT 25  
RED CINDER  
SHARK TANK 883F**



**LOT 35 - RED DWAJO MACK 4F**

**TERMS & CONDITIONS:**

- All Cattle will sell under the standard terms and conditions set forth by the Canadian Angus and Simmental Associations.
- Terms - The terms of the sale are cash or cheque. All monies are in Canadian funds. The right of property shall not pass until after settlement has been made; payable at par to OBI. All settlements must be made with the clerk before any cattle will be released.
- Disputes - Every animal sells to the highest bidder and in cases of disputes, the auctioneer's decision will be final. Announcements from the auction block will take precedence over the printed matter in the catalogue.
- Liabilities - All persons attend the sale at their own risk. The seller, facility owner and sale manager assume no liability legal or otherwise, for any accidents that occur. It is understood that OBI is acting only as a medium between buyer and seller and is not responsible for any failure on the part of either party to live up to his obligations. Neither does OBI assume any financial obligations to collect or enforce the collection of any monies between parties and any legal action that may in exceptional cases be taken must be between the buyer and the seller.
- Insurance - Each animal becomes the risk of the purchase as soon as sold, so we do recommend insurance.
- Sale Cattle - All cattle will sell according to the Lot Number tags in the catalogue.
- Registration Papers - All animals selling are registered and will be transferred only upon full payment.

**CONCERNS – PLEASE CALL OBI FOR ANY CONCERNS THAT YOU HAVE AND WE WILL BE ABLE TO HELP YOU ACCORDINGLY.**



**OBI LIVESTOCK LTD.**  
28 GLENDALE BLVD  
RED DEER, AB T4P 2P3



# ON TARGET

19TH ANNUAL  
BULL & FEMALE SALE

