

8th Annual
McTavish Farms Ltd
WITH GUEST CHARLA MOORE FARMS
BULL SALE

1:30 PM, MARCH 22, 2019, AT THE FARM, MOOSOMIN, SK



CHAROLAIS & RED ANGUS

8th Annual
McTavish Farms
WITH CHARLA MOORE FARMS
BULL SALE

FRIDAY MARCH 22 2019
1:30PM AT THE FARM **MOOSOMIN, SK**

CHAROLAIS & RED ANGUS

SALE DAY PHONES

Jared McTavish(306) 435-9842
Sean McTavish(306) 435-9843
Jordan Moore(306) 452-8454
Farm(306) 435-4125

SALE STAFF

Brent Carey AUCTIONEER(403) 650-9028
Helge By RING SERVICE(306) 536-4261
Hugh Garrett RING SERVICE(306) 435-9436

ONLINE BIDDING

www.dlms.caMark Shologan (780) 699-5082

VIDEOS

All bulls will be sold by video presentation and will not be entering the ring. Please plan to view the bulls prior to sale time in the sale groups or better yet come before sale day and walk the pens. Videos will be online prior to the sale at www.mctavishfarms.ca

INSURANCE

Bonnie Thompson, Alameda Agencies
(306) 489-2258 or (306) 483-7311

SEMEN TESTING

All bulls will be semen tested. All 2-year-old bulls will be trichomonas foetus tested. Call for information. Test results will be available sale day along with current weights.

ACCOMMODATIONS

Canalta Hotel, Moosomin(306) 435-3034
Motel 6, Moosomin(306) 435-3666
Best Western Plus, Moosomin(306) 435-4700

DELIVERY & BOARD

Free delivery up to 500 km and boarding until May 1st. Bulls left after May 1st will be charged \$5.00/day plus \$100 delivery. For all other deliveries talk to Jared. We will help arrange delivery and haul bulls to accommodate trucking from central locations. We recommend you insure your bull if you leave him with us. Haul your bull(s) home sale day and receive \$100 off the purchase price.

BREEDER GUARANTEE

All bulls sell under the standard terms and conditions set out by breed Associations.

SIGHT UNSEEN PROGRAM

We hope you can join us sale day to see the bulls and enjoy some hospitality, but if you can't, our sight unseen program can assist you with your sale selections and purchases. Let us know what type of bull(s) you are looking for and we will select bulls that meet your expectations. Alternatively.....
WATCH & BID LIVE ONLINE with dlms.ca

IN-HERD SEMEN

McTavish Farms reserves the right to draw semen on any of the sale offerings for in-herd use only at our expense and your convenience.

DIRECTIONS

6 miles east of Moosomin on Hwy 1, 2.5 miles north. GPS: 50.1260, -101.5401
See map on inside back cover.



WELCOME

What an awesome year..... a CWA Show Champion, Reserve Grand Champion Bull with McTavish New Era 79E. The bull pen this year is very deep with the addition of new genetics, Elder's Cracker Jack 13D and SOS Hooey PLD 127D, along with the proven sires, WINN MANNS Cuervo 4A and Big Rig 639Y.

McTavish Farms Ltd., is located just off the #1 highway in the southeast corner of Saskatchewan, 6 miles east and 2 ½ miles north of Moosomin, Sk. We have been in the Charolais business for 30 years this spring. Although things have changed over the years, the core principles of our herd have not. Our Charolais and Red Angus bulls are built to calve and perform; structurally sound, moderately framed, stout, easy fleshing herd bulls with excellent temperament and thick hair coats. There are a lot of cow families that keep showing up in the pedigrees of the bulls on offer, proven by the Gold Star Dams of Distinction awarded. The genetics we offer March 22, 2019 are geared to work in your breeding program, both purebred and commercial herds. We have concentrated on

traits like calving ease, vigour at birth, sound udders, temperament and maternal qualities. We believe that our genetics will work in any environment and we are confident that they would work for you. We would be honoured to be considered as your genetic source for your next herd bull.

It is always a hectic time of year but we always look forward to bull sale time. We get to reacquaint with old friends, customers and meet many new cattlemen in search of genetics to enhance their breeding program.

Jordan Moore of Charla Moore Farms joins us again as a guest consignor.

New this year, our sale will be on DLMS if you want to watch or bid. Please join us for lunch before the sale, if you need help in any way, don't hesitate to give us a call. Videos will be available at www.mctavishfarms.ca. Come to the farm any time prior to sale day to view the bulls and their mothers. Hope to see you on the 22nd of March.

Jared

MCTAVISH FARMS

Box 1047, Moosomin, SK S0G 3N0
Jared & Heather (306) 435-4925 | (306) 435-9842
Betty McTavish (306) 435-4125
facebook: @mctavishfarms
www.mctavishfarms.ca

CHARLA MOORE FARMS

Box 335, Redvers, SK S0C 2H0
Jordan Moore (306) 452-8454



Charolais REFERENCEsires



Ref **WINN MANS BIG RIG 639Y**
BKJ 639Y :: APRIL 3, 2011 :: PMC347318

A feature bull at the 2013 Winn Man Sale. As runner up bidders, we approached Semex Alliance to purchase walking rights on Big Rig due to his outcross pedigree. He has provided calving ease with muscle shape, hair and performance. He's been used successfully on cows & heifers, reduced birth weights & calve with ease. The most impressive part is that his calves crush the scales at weaning time.

SIRE CJC TRADEMARK H45
MD ONTOP U1006
MD MS PACKER F462 DMM
SPARROWS DURANGO 585P
DAM WINN MANS TINA 639S
WINN MANS TINA 112L



Ref **WINN MANS CUERVO 4A**
BKJ 4A :: May 13, 2013 :: PMC362001

We purchased Cuervo out of Winn Mans 2015 bull sale. He is thick, rugged, and easy-doing, with extremely sound feet. He has been used successfully on heifers and cows. His calves have moderate birth weights, good feet, curly hair and are high performing.

ABC LATORO 263G
SIRE SPARROWS BIRMINGHAM 758T
SPARROWS JOSIE 13P
WINN MANS LANZA 610S
DAM WINN MANS VANESSA 9104W
WINN MANS VANESSA 531R



Ref **SOS HOOEY PLD 127D**
Feb 23, 2016 :: PMC709167

CJC TRADEMARK H45
SIRE MD ONTOP U1006
MD MS PACKER F462 DMM
SPARROWS DURANGO 585P
DAM WINN MANS TINA 639S
WINN MANS TINA 112L

This bull checked off all of the things that I look for in a new herd sire; hair, disposition, structural soundness, and comes from one "wicked" cow family. Multiple breeders across Canada are having great success with him.



Ref **ELDER'S CRACKER JACK 13D**
Jan 14, 2016 :: PMC708102

GERRARD PASTOR 35Z
SIRE ELDER'S BLACKJACK 788B
SVY STARSTRUCK 8X
D R REVELATION 467
DAM MEDONTE REVEALING 10Z
MEDONTE XPECTATION 15X

This is one impressive bull! Not many bulls are built as thick & deep and still softly made. One of my favorite things about this bull is that his mother is one tremendous cow. His calves are soft made with ample amounts of thickness and depth of body.



Ref **BRIMNER BULL 36D**
Feb 15, 2016 :: PMC714170

PLESANT DAWN RIO136X
SIRE PLEASANTDAWN INFUSION 413A
PLEASANT DAWN MAGGIE 40Y
HBC ENCORE 834U
DAM GBR MISS 62Z
GBR DELUXE 181W

Stout and soggy come to mind when describing 36D. This bull is structurally correct with all of the natural meat and muscle a person could want. Brimner Bull 36D has brought calving ease and performance to the table.

CANADIAN CHAROLAIS AVERAGE EXPECTED PROGENY DIFFERENCES FOR CALVES BORN IN 2017/18

EPDS ce4.5 | bw1.1 | ww43 | yw83 | milk21 | tm43 |

LOT 1

One of the first Hooey sons to be offered by us and what a bull!! Ricochet is one eye appealing bull with a boat load of substance to him. This heifer's first calf is as smooth as silk but he is also as deep and as thick as they come. If you are looking for a homo polled bull with great temperament, feet and legs, hair, and performance this is the bull for you. Not to mention eye appeal!



LOT 1

1

MCTAVISH RICOCHET 18F

BBMT 18F :: January 14, 2018 :: PMC748898 :: Polled

WINN MANS CHAVEZ 826Y
SIRE **SOS HOOEY PLD 127D**
FFBB ABBI 307A

DAWN MAGNUM 49Y
DAM **MCTAVISH LEONA 80D**
MCTAVISH LEONA 80A

MERIT 7329T
WINN MANS BREATHLESS 826U
CSS SIR NAVIGATOR 20Y
FFBB MISS SILVA PLD 730T
HEJ MAGNUM 26R PLEASANT
PLEASANT DAWN RIO 89T
MERIT 9874W
JWX LEONA 3L

PERF	BW	actWW	365D	EPDs	CE	BW	WW	YW	M	TM
	97	930	1496		1.1	3.4	44	89	18	40

HOMO POLLED

2

MCTAVISH AIR FORCE 17F

BBMT 17F :: February 18, 2018 :: PMC748897 :: Polled

WINN MANS CHAVEZ 826Y
SIRE **SOS HOOEY PLD 127D**
FFBB ABBI 307A

SVY MONUMENT PLD 159Y
DAM **MCTAVISH DM MISS 121C**
MCTAVISH DENI 91Z

MERIT 7329T
WINN MANS BREATHLESS 826U
CSS SIR NAVIGATOR 20Y
FFBB MISS SILVA PLD 730T
SPARROWS LANDMARK 963W
SVY STAR STRUCK 825U
GILLILAND DIAGO 7R
DEN-MAR MISS 13N

PERF	BW	actWW	365D	EPDs	CE	BW	WW	YW	M	TM
	104	875	1516		2.0	3.7	44	87	17	39

3RD GENERATION POLLED

LOT 2

McTavish Air Force 17F is an outstanding Hooey son out of a Monument daughter. The Monument sons were always pen favorites and now his daughters are getting the job done too. One has to admire the depth of rib, length and overall correctness in this bull. This bull has solid muscling with a ton of hair and moves out like a cat. This guy is worth the drive to come see.



BY

LOT 2



3

MCTAVISH STEALTH 37F

BBMT 37F :: January 24, 2018 :: PMC748995 :: Polled

WINN MANS CHAVEZ 826Y
SIRE **SOS HOOEY PLD 127D**
FFBB ABBI 307A

MERIT 7329T
WINN MANS BREATHLESS 826U
CSS SIR NAVIGATOR 20Y
FFBB MISS SILVA PLD 730T
MERIT 9874W
MCTAVISH EMERALD 35T
SVY MONUMENT PLD 159Y
MCTAVISH JEWEL 65Z

MCTAVISH LTD EDITION 54B
DAM **MCTAVISH JEWEL 96D**
MCTAVISH JEWEL 108B

PERF	BW	actWW	365D	EPDs	CE	BW	WW	YW	M	TM
	93	665	1309		6.3	0.5	42	81	16	37

HOMO POLLED



4

MCTAVISH HOOCH 88F

BBMT 88F :: January 27, 2018 :: PMC749125 :: Polled

WINN MANS CHAVEZ 826Y
SIRE **SOS HOOEY PLD 127D**
FFBB ABBI 307A

MERIT 7329T
WINN MANS BREATHLESS 826U
CSS SIR NAVIGATOR 20Y
FFBB MISS SILVA PLD 730T
HEJ MAGNUM 26R
PLEASANT DAWN RIO 89T
BxB DATELINE SON 65R
JMB SUNSET 712G

PLEASANT DAWN MAGNUM 49Y
DAM **MCTAVISH OAKLY 27B**
JMB MS OAKRIDGE 867U

PERF	BW	actWW	365D	EPDs	CE	BW	WW	YW	M	TM
	90	900	1428		7.6	0.0	35	72	19	35

3RD GENERATION POLLED



5

MCTAVISH COWBOY 94F

BBMT 94F :: January 30, 2018 :: PMC749132 :: Polled

WINN MANS CHAVEZ 826Y
SIRE **SOS HOOEY PLD 127D**
FFBB ABBI 307A

MERIT 7329T
WINN MANS BREATHLESS 826U
CSS SIR NAVIGATOR 20Y
FFBB MISS SILVA PLD 730T
MERIT 5257R
MERIT DIAMOND 3145N
ROLLING D DESIGN 730T
MCTAVISH JAY JAY 90S

MERIT 9874W
DAM **MCTAVISH JAYJAY 104C**
MCTAVISH MISS 28W

PERF	BW	actWW	365D	EPDs	CE	BW	WW	YW	M	TM
	96	660	1142		4.3	1.7	39	80	13	33

3RD GENERATION POLLED

6

MCTAVISH BUDDY 131F

BBMT 131F :: January 19, 2018 :: PMC749248 :: Polled

WINN MANS CHAVEZ 826Y
SIRE **SOS HOOEY PLD 127D**
FFBB ABBI 307A

MERIT 7329T
WINN MANS BREATHLESS 826U
CSS SIR NAVIGATOR 20Y
FFBB MISS SILVA PLD 730T
MERIT 5257R
MERIT DIAMOND 3145N
MCTAVISH SILVERADO 74H
MCTAVISH MARLA 54J

MERIT 9874W
DAM **MCTAVISH MARLA 60B**
MCTAVISH MSENTERPRIZE21R

PERF	BW	actWW	365D	EPDs	CE	BW	WW	YW	M	TM
	96	610	1184		6.4	1.0	30	65	12	28

3RD GENERATION POLLED

7

MCTAVISH PANHANDLE 127F

BBMT 127F :: February 19, 2018 :: PMC749245 :: Polled

PLEASANTDAWN INFUSION413A
SIRE **BRIMNER BULL 36D**
GBR MISS 62Z

PLESANT DAWN RIO136X
PLEASANT DAWN MAGGIE 40Y
HBC ENCORE 834U
GBR DELUXE 181W
SHSH PLD BROKER 1P
SNOWPOINT POL UNL 1400L
MNE PARK MODEL 50P
MCTAVISH EXPECTATION 20R

ROLLING D DESIGN 730T
DAM **MCTAVISH KAROLINA 75Z**
MCTAVISH MISS DILLY 50W

PERF	BW	actWW	365D	EPDs	CE	BW	WW	YW	M	TM
	105	780	1376		1.0	2.8	56	96	21	49

HOMO POLLED



LOT 8

LOT 8

McTavish Smoking Gun is one deep, deep bull. I really like how clean fronted and smooth made this bull is besides all the meat and muscle he brings to the table. This bull is a unique individual, not only is he red, homo polled, great disposition, he is a bull I would recommend on heifers. Smoking Gun's mother is one of those easy doing type of cows that would be fat on slough grass and willow sticks! Plus, there is longevity in this bloodline because she is still going strong in the cow herd at 13 years of age.

8 MCTAVISH SMOKING GUN 13F

BBMT 13F :: February 15, 2018 :: PMC748894 :: Polled

PLEASANTDAWN INFUSION413A
SIRE **BRIMNER BULL 36D**
GBR MISS 62Z

MSW CRAVEN RED 29M
DAM **LAE STRAWBERRY 646S**
MNE NINNY 69N

PLEASANT DAWN RIO136X
PLEASANT DAWN MAGGIE 40Y
HBC ENCORE 834U
GBR DELUXE 181W

KEYS HANDYMAN PLD 255H
SVS FIREBALL 19F
SPARROWS ELDORADO 361L
MNE LIKEABLE 80L

PERF	BW	actWW	365D	EPDs	CE	BW	WW	YW	M	TM
	93	890	1487		10.6	-1.5	45	79	18	40

HOMO POLLED

9 MCTAVISH CHACHING 30F

BBMT 30F :: February 3, 2018 :: PMC748987 :: Polled

ELDER'S BLACKJACK 788B
SIRE **ELDER'S CRACKER JACK 13D**
MEDONTE REVEALING 10Z

EATONS BIG BUD 10402 P
DAM **PLEASANT DAWN KATE 25C**
PLEASANT DAWN MAGIE 24T

GERRARD PASTOR 35Z
SVY STARSTRUCK 8X
D R REVELATION 467
MEDONTE XPECTATION 15X

EATONS TREASURE 8076
MISS GRAND HOUSE 360
HEJ MAGNUM 26R
PLEASANT DAWN EXCEL 4K

PERF	BW	actWW	365D	EPDs	CE	BW	WW	YW	M	TM
	96	950	1521		6.1	0.4	49	91	30	54

HOMO POLLED



LOT 9

LOT 9

"ChaChing" is what I think about when I envision the future calves from this bull. This bull checks a lot of boxes for me; homo polled, plenty of hair, length, natural thickness, depth of body and great disposition. This Cracker Jack son brings a unique pedigree with calving ease built into it. You can wear the rubber off your tires looking for a bull like this. Don't pass up an opportunity to put this quality of bull in your pasture.

Retaining 1/3 semen interest

10

MCTAVISH SWAGGER 4F

BBMT 4F :: February 22, 2018 :: PMC748885 :: Polled

ELDER'S BLACKJACK 788B
SIRE **ELDER'S CRACKER JACK 13D**
MEDONTE REVEALING 10Z

MERIT ROUNDUP 9508W
DAM **STEPPLER MISS 142A**
STEPPLER MISS 142Y

GERRARD PASTOR 35Z
SVY STARSTRUCK 8X
D R REVELATION 467
MEDONTE XPECTATION 15X
MXS VERMILLION 527R
MERIT YOLANDA 7244T
SPARROWS SEMINOLE 927W
STEPPLER MISS MARG 130R

PERF	BW	actWW	365D	EPDs	CE	BW	WW	YW	M	TM
	100	740	1332		4.7	0.8	53	96	23	49

2ND GENERATION POLLED

11

MCTAVISH BIG IRON 65F

BBMT 65F :: March 11, 2018 :: PMC749033 :: Polled

ELDER'S BLACKJACK 788B
SIRE **ELDER'S CRACKER JACK 13D**
MEDONTE REVEALING 10Z

PLEASANT DAWN MAGNUM 49Y
DAM **MCTAVISH ANGEL 36A**
MCTAVISH ANGEL 25U

GERRARD PASTOR 35Z
SVY STARSTRUCK 8X
D R REVELATION 467
MEDONTE XPECTATION 15X
HEJ MAGNUM 26R
PLEASANT DAWN RIO 89T
GILLILAND DIAGO 7R
MCTAVISH VICTORIA 3M

PERF	BW	actWW	actYW	EPDs	CE	BW	WW	YW	M	TM
	103	780	1190		5.3	1.7	59	109	28	58

HOMO POLLED

12

MCTAVISH STETSON 74F

BBMT 74F :: February 6, 2018 :: PMC749112 :: Polled

ELDER'S BLACKJACK 788B
SIRE **ELDER'S CRACKER JACK 13D**
MEDONTE REVEALING 10Z

MERIT 9874W
DAM **MCTAVISH EMERALD 11B**
MCTAVISH BUTTONS 23R

GERRARD PASTOR 35Z
SVY STARSTRUCK 8X
D R REVELATION 467
MEDONTE XPECTATION 15X
MERIT 5257R
MERIT DIAMOND 3145N
MCTAVISH SILVERADO 74H
MCTAVISH IVORY 35H

PERF	BW	actWW	365D	EPDs	CE	BW	WW	YW	M	TM
	91	735	1214		7.3	0.3	48	86	24	48

4TH GENERATION POLLED



13

MCTAVISH PATRIOT 110F

BBMT 110F :: February 17, 2018 :: PMC749220 :: Polled

ELDER'S BLACKJACK 788B
SIRE **ELDER'S CRACKER JACK 13D**
MEDONTE REVEALING 10Z

HBC ROCK 142Y
DAM **MCTAVISH LAURA 114A**
KCM LAURA 126Y

GERRARD PASTOR 35Z
SVY STARSTRUCK 8X
D R REVELATION 467
MEDONTE XPECTATION 15X
HBC SHOWDOWN 932W
HBC CARRIE 609S
HTA SENATOR 8130U
KCM LAURA 376N

PERF	BW	actWW	365D	EPDs	CE	BW	WW	YW	M	TM
	93	715	1326		6.9	0.6	46	85	25	48

HOMO POLLED



14

MCTAVISH LOCKED'N'LOADED 118F

BBMT 118F :: February 20, 2018 :: PMC749230 :: Polled

ELDER'S BLACKJACK 788B
SIRE **ELDER'S CRACKER JACK 13D**
MEDONTE REVEALING 10Z

CARNOT SC
DAM **MCTAVISH SAGE 1B**
MCTAVISH SILVER SAGE 52R

GERRARD PASTOR 35Z
SVY STARSTRUCK 8X
D R REVELATION 467
MEDONTE XPECTATION 15X
VIRGIL SC
ULNA
KBK DILLINGER 13L
HFD MISS KIMBELLE 23F

PERF	BW	actWW	365D	EPDs	CE	BW	WW	YW	M	TM
	97	870	1393		4.6	1.7	48	84	26	49

2ND GENERATION POLLED



15

MCTAVISH PHANTOM 23F

BBMT 23F :: February 6, 2018 :: PMC748903 :: Polled

MD ONTOP U1006
SIRE **WINN MANS BIG RIG 639Y**
WINN MANS TINA 639S

MNE PARK MODEL 50P
DAM **MCTAVISH BARBIE 79T**
MCTAVISH SIGNATURE 18H

CJC TRADEMARK H45
MD MS PACKER F462
SPARROWS DURANGO 585P
WINN MANS TINA 112L
MSW CRAVEN RED 29M
MNM TRUST 4H
JMB RED HOT 444D
DEN-MAR MISS DELIGHT 9Y

PERF	BW	actWW	365D	EPDs	CE	BW	WW	YW	M	TM
	94	725	1384		5.6	-0.2	39	75	20	39

3RD GENERATION POLLED

LOT 16

Here is a Big Rig son that combines that calving ease, low birth weight with curve bending performance. This powerhouse is impressive in the pen and screams herd bull. You've got to love his masculine, thick top, deep rib and the overall length of this bull.



16 MCTAVISH DOUBLE BARRELL 54F

BBMT 54F :: January 9, 2018 :: PMC749015 :: Polled

MD ONTOP U1006
SIRE **WINN MANS BIG RIG 639Y**
WINN MANS TINA 639S

MERIT 9874W
DAM **MCTAVISH BILLIE JEAN 30A**
MCTAVISH BILLIE JEAN 18T

CJC TRADEMARK H45
MD MS PACKER F462
SPARROWS DURANGO 585P
WINN MANS TINA 112L
MERIT 5257R
MERIT DIAMOND 3145N
GILLILAND DIAGO 7R
DEN-MAR MISS 15P

PERF	BW	actWW	365D	EPDs	CE	BW	WW	YW	M	TM
	94	920	1482		7.5	0.1	34	70	18	35

HOMO POLLED

17 MCTAVISH RANCH HAND 107F

BBMT 107F :: February 8, 2018 :: PMC749181 :: Polled

MD ONTOP U1006
SIRE **WINN MANS BIG RIG 639Y**
WINN MANS TINA 639S

EC NO DOUBT 2022P
DAM **MCTAVISH ANGEL 28A**
MCTAVISH VICKIE 36Y

CJC TRADEMARK H45
MD MS PACKER F462
SPARROWS DURANGO 585P
WINN MANS TINA 112L
M6 GRID MAKER 104 PET
EC LADY DUKE 2022P
ROLLING D DESIGN 730T
MCTAVISH ANGEL 25U

PERF	BW	actWW	365D	EPDs	CE	BW	WW	YW	M	TM
	102	735	1306		5.4	0.8	45	92	25	48

HOMO POLLED

LOT 17

A great Winn Mans Big Rig son. This bull is long, deep and thick. He has a calving ease presence about him with a nice tidy head and smooth shoulders. This bull is out of a heavy milking No Doubt daughter which raises them big pay weight calves every year.





18

MCTAVISH CHICO 28F

BBMT 28F :: January 25, 2018 :: PMC748983 :: Polled

MD ONTOP U1006
SIRE **WINN MANS BIG RIG 639Y**
WINN MANS TINA 639S

ROLLING D DESIGN 730T
DAM **MCTAVISH VICKIE 36Y**
MCTAVISH ANGEL 25U

CJC TRADEMARK H45
MD MS PACKER F462
SPARROWS DURANGO 585P
WINN MANS TINA 112L
SHSH PLD BROKER 1P
SNOWPOINT POL UNL 1400L
GILLILAND DIAGO 7R
MCTAVISH VICTORIA 3M

PERF	BW	actWW	365D	EPDs	CE	BW	WW	YW	M	TM
	94	720	1292		5.5	0.9	36	75	23	41

3RD GENERATION POLLED



19

MCTAVISH ROCKEFELLER 75F

BBMT 75F :: February 2, 2018 :: PMC749113 :: Polled

MD ONTOP U1006
SIRE **WINN MANS BIG RIG 639Y**
WINN MANS TINA 639S

MNE PARK MODEL 50P
DAM **MCTAVISH MISS DILLY 50W**
MCTAVISH EXPECTATION 20R

CJC TRADEMARK H45
MD MS PACKER F462
SPARROWS DURANGO 585P
WINN MANS TINA 112L
MSW CRAVEN RED 29M
MNM TRUST 4H
KBK DILLINGER 13L
MCTAVISH CHALLENGER 66M

PERF	BW	actWW	365D	EPDs	CE	BW	WW	YW	M	TM
	109	670	1263		1.0	3.2	39	72	20	39

3RD GENERATION POLLED



20

MCTAVISH GRISWOLD 120F

BBMT 120F :: February 23, 2018 :: PMC749233 :: Polled

MD ONTOP U1006
SIRE **WINN MANS BIG RIG 639Y**
WINN MANS TINA 639S

SVY MONUMENT PLD 159Y
DAM **MCTAVISH ANGEL 65D**
MCTAVISH ANGEL 36A

CJC TRADEMARK H45
MD MS PACKER F462
SPARROWS DURANGO 585P
WINN MANS TINA 112L
SPARROWS LANDMARK 963W
SVY STAR STRUCK 825U
PLEASANT DAWN MAGNUM 49Y
MCTAVISH ANGEL 25U

PERF	BW	actWW	365D	EPDs	CE	BW	WW	YW	M	TM
	100	735	1355		3.7	2.3	54	98	24	51

3RD GENERATION POLLED

LOT 21

I love how this guy stands in the pen. He is caulk full of meat and muscle. He is very correct, hairy and an eye catching bull. McTavish Bandit mother is one of those cows you look forward to seeing what she has every year.



LOT 21

21

MCTAVISH BANDIT 21F

BBMT 21F :: February 14, 2018 :: PMC748901 :: Polled

SPARROWS BIRMINGHAM 758T
SIRE **WINN MANS CUERVO 4A**
WINN MANS VANESSA 9104W

GILLILAND DIAGO 7R
DAM **MCTAVISH POLLY 50U**
MCTAVISH JEZABELLE 67R

ABC LATORO 263G
SPARROWS JOSIE 13P
WINN MANS LANZA 610S
WINN MANS VANESSA 531R
SVS MASTERCARD 2M
WOOD RIVER DIXIE 31K
KBK DILLINGER 13L
JWX KATRIN 110F

PERF	BW	actWW	365D	EPDs	CE	BW	WW	YW	M	TM
	106	780	1332		3.6	2.7	56	101	19	47

3RD GENERATION POLLED

22

MCTAVISH COMMANDER 27F

BBMT 27F :: January 23, 2018 :: PMC748908 :: Polled

SPARROWS BIRMINGHAM 758T
SIRE **WINN MANS CUERVO 4A**
WINN MANS VANESSA 9104W

BXB DATELINE SON 65R
DAM **JMB MS OAKRIDGE 867U**
JMB SUNSET 712G

ABC LATORO 263G
SPARROWS JOSIE 13P
WINN MANS LANZA 610S
WINN MANS VANESSA 531R
SODER DATELINE 526M
P-3 LADY PERFECT 6-198F
KOP GOLD STEEL 66E
JMB JOAN 539E

PERF	BW	actWW	365D	EPDs	CE	BW	WW	YW	M	TM
	101	770	1313		6.4	1.9	47	82	16	39

3RD GENERATION POLLED

LOT 22

Very solid Cuervo son. He is thick, hairy, great set of feet, and lot of natural muscling.



LOT 22



23 MCTAVISH TITANIUM 12F

BBMT 12F :: January 21, 2018 :: MC748893 :: Horned

SIRE SPARROWS BIRMINGHAM 758T
WINN MANS CUERVO 4A
WINN MANS VANESSA 9104W

ABC LATORO 263G
SPARROWS JOSIE 13P
WINN MANS LANZA 610S
WINN MANS VANESSA 531R

DAM GILLILAND DIAGO 7R
MCTAVISH LESLEY 86Z
MCTAVISH DESIGNER 75W

SVS MASTERCARD 2M
WOOD RIVER DIXIE 31K
ROLLING D DESIGN 730T
MCTAVISH SCARLET 77R

PERF	BW	actWW	365D	EPDs	CE	BW	WW	YW	M	TM
	106	600	1121		2.9	3.8	45	84	17	39

HORNED



24 MCTAVISH LINCOHN 31F

BBMT 31F :: January 21, 2018 :: PMC748989 :: Polled

SIRE SPARROWS BIRMINGHAM 758T
WINN MANS CUERVO 4A
WINN MANS VANESSA 9104W

ABC LATORO 263G
SPARROWS JOSIE 13P
WINN MANS LANZA 610S
WINN MANS VANESSA 531R
MXS CAVIAR 515R
HKS CUTTING EDGE LADY196P
LT RIO BLANCO 1234 P
RPJ REFLECTION 302N

DAM WHITECAP LAREDO 232T
RPJ REFLECTION 145Y
RPJ REFLECTION 657S

PERF	BW	actWW	365D	EPDs	CE	BW	WW	YW	M	TM
	104	820	1299		3.7	3.0	60	99	18	48

HOMO POLLED



25 MCTAVISH BUSHWHACKER 39F

BBMT 39F :: February 2, 2018 :: PMC749000 :: Polled

SIRE SPARROWS BIRMINGHAM 758T
WINN MANS CUERVO 4A
WINN MANS VANESSA 9104W

ABC LATORO 263G
SPARROWS JOSIE 13P
WINN MANS LANZA 610S
WINN MANS VANESSA 531R

DAM GILLILAND DIAGO 7R
MCTAVISH MEMPHISBELLE 1U
MCTAVISH SILVER SAGE 52R

SVS MASTERCARD 2M
WOOD RIVER DIXIE 31K
KBK DILLINGER 13L
HFD MISS KIMBELLE 23F

PERF	BW	actWW	365D	EPDs	CE	BW	WW	YW	M	TM
	101	785	1296		5.0	1.9	51	92	21	46

POLLED

26 MCTAVISH FORTY CREEK 49F

BBMT 49F :: January 24, 2018 :: QPMC749011 :: Polled

SPARROWS BIRMINGHAM 758T
SIRE **WINN MANS CUERVO 4A**
WINN MANS VANESSA 9104W

SCARTH RED ADAIR 333U
DAM **MCTAVISH ROSIE 91Y**
DEN-MAR MISS 13N

ABC LATORO 263G
SPARROWS JOSIE 13P
WINN MANS LANZA 610S
WINN MANS VANESSA 531R
SHAWNEE HAGAR 558R
BEAVER CREEK PRINCESS33S
DEN-MAR WYATT 13L
DEN-MAR MISS 32J

PERF	BW	actWW	365D	EPDs	CE	BW	WW	YW	M	TM
	100	785	1211		6.7	1.2	43	75	18	40

3RD GENERATION POLLED



27 MCTAVISH GRIMSHAW 67F

BBMT 67F :: February 16, 2018 :: PMC749037 :: Polled

SPARROWS BIRMINGHAM 758T
SIRE **WINN MANS CUERVO 4A**
WINN MANS VANESSA 9104W

HBC MAXIMIZER 102L
DAM **MCTAVISH WILMA 68U**
MCTAVISH MS FAYETTE 67S

ABC LATORO 263G
SPARROWS JOSIE 13P
WINN MANS LANZA 610S
WINN MANS VANESSA 531R
KC STOLICHNAYA H016 ET
ELDER'S SHINE 735G
MCTAVISH SILVERADO 74H
JWX KATRIN 110F

PERF	BW	actWW	365D	EPDs	CE	BW	WW	YW	M	TM
	102	795	1383		5.0	2.5	54	90	15	42

HOMO POLLED



28 MCTAVISH MERCHANT 69F

BBMT 69F :: January 10, 2018 :: MC749041 :: Horned

SPARROWS BIRMINGHAM 758T
SIRE **WINN MANS CUERVO 4A**
WINN MANS VANESSA 9104W

GILLILAND DIAGO 7R
DAM **MCTAVISH MOONBEAM 65Y**
MCTAVISH WILLOWAY 23P

ABC LATORO 263G
SPARROWS JOSIE 13P
WINN MANS LANZA 610S
WINN MANS VANESSA 531R
SVS MASTERCARD 2M
WOOD RIVER DIXIE 31K
KBK DILLINGER 13L
MCTAVISH JEWEL 42M

PERF	BW	actWW	365D	EPDs	CE	BW	WW	YW	M	TM
	97	700	1329		5.9	1.7	42	79	23	44

HORNED





29

MCTAVISH ANALYST 73F

BBMT 73F :: February 7, 2018 :: PMC749049 :: Polled

SIRE SPARROWS BIRMINGHAM 758T
WINN MANS CUERVO 4A
WINN MANS VANESSA 9104W

DAM PLEASANT DAWN MAGNUM 49Y
MCTAVISH KAROLINA 82D
MCTAVISH JEN 71U

ABC LATORO 263G
SPARROWS JOSIE 13P
WINN MANS LANZA 610S
WINN MANS VANESSA 531R
HEJ MAGNUM 26R
PLEASANT DAWN RIO 89T
GILLILAND DIAGO 7R
MCTAVISH EXPECTATION 20R

PERF	BW	actWW	365D	EPDs	CE	BW	WW	YW	M	TM
	90	700	1411		6.1	1.8	53	95	22	49

3RD GENERATION POLLED



30

MCTAVISH COMMODITY 79F

BBMT 79F :: January 30, 2018 :: PMC749117 :: Polled

SIRE SPARROWS BIRMINGHAM 758T
WINN MANS CUERVO 4A
WINN MANS VANESSA 9104W

DAM GILLILAND DIAGO 7R
MCTAVISH DAWN 8X
MCTAVISH DELTA DAWN 73N

ABC LATORO 263G
SPARROWS JOSIE 13P
WINN MANS LANZA 610S
WINN MANS VANESSA 531R
SVS MASTERCARD 2M
WOOD RIVER DIXIE 31K
KBK DILLINGER 13L
STANICK MISS GOODY 5G

PERF	BW	actWW	365D	EPDs	CE	BW	WW	YW	M	TM
	102	740	1267		2.3	3.5	53	101	20	47

HOMO POLLED



31

MCTAVISH HIGHBALL 82F

BBMT 82F :: January 8, 2018 :: PMC749120 :: Polled

SIRE SPARROWS BIRMINGHAM 758T
WINN MANS CUERVO 4A
WINN MANS VANESSA 9104W

DAM GILLILAND DIAGO 7R
MCTAVISH JEN 71U
MCTAVISH EXPECTATION 20R

ABC LATORO 263G
SPARROWS JOSIE 13P
WINN MANS LANZA 610S
WINN MANS VANESSA 531R
SVS MASTERCARD 2M
WOOD RIVER DIXIE 31K
KBK DILLINGER 13L
MCTAVISH CHALLENGER 66M

PERF	BW	actWW	365D	EPDs	CE	BW	WW	YW	M	TM
	90	730	1199		6.4	1.1	44	81	21	43

3RD GENERATION POLLED

32

MCTAVISH PIONEER 104F

BBMT 104F :: January 27, 2018 :: PMC749175 :: Polled

SPARROWS BIRMINGHAM 758T
SIRE **WINN MANS CUERVO 4A**
WINN MANS VANESSA 9104W

ROLLING D DESIGN 730T
DAM **MCTAVISH MISS 28W**
MCTAVISH JAY JAY 90S

ABC LATORO 263G
SPARROWS JOSIE 13P
WINN MANS LANZA 610S
WINN MANS VANESSA 531R
SHSH PLD BROKER 1P
SNOWPOINT POL UNL 1400L
DEN-MAR CORONA 28P
DRD JAY JAY 104J

PERF	BW	actWW	365D	EPDs	CE	BW	WW	YW	M	TM
	104	745	1269		3.7	2.5	47	83	20	44

3RD GENERATION POLLED**2-year-old BULLS**

33

MCTAVISH DIABLO 46E

BBMT 46E :: February 3, 2017 :: PMC730992 :: Polled

MD ONTOP U1006
SIRE **WINN MANS BIG RIG 639Y**
WINN MANS TINA 639S

SVY MONUMENT PLD 159Y
DAM **MCTAVISH DM GIRL 96C**
DEN-MAR MISS RED GIRL24R

CJC TRADEMARK H45
MD MS PACKER F462
SPARROWS DURANGO 585P
WINN MANS TINA 112L
SPARROWS LANDMARK 963W
SVY STAR STRUCK 825U
DIAMOND R RED KNIGHT 10N
DEN-MAR MISS KENDRA 7K

PERF	BW	205D	365D	EPDs	CE	BW	WW	YW	M	TM
	85	786	1292		6.4	0.1	38	64	23	41

3RD GENERATION POLLED

34

MCTAVISH SNIPER 122E

BBMT 122E :: January 24, 2017 :: MC731609 :: Horned

SPARROWS LANDMARK 963W
SIRE **SVY MONUMENT PLD 159Y**
SVY STAR STRUCK 825U

MERIT 9874W
DAM **MCTAVISH CRYSTAL 3Z**
MCTAVISH OASIS 42S

ABC NUEVO
SPARROWS PETITE 461N
WILDOR RAVEN 6M
SVY STARSTRUCK 559R
MERIT 5257R
MERIT DIAMOND 3145N
MNE PARK MODEL 50P
MCTAVISH MS VICTORIA 42L

PERF	BW	205D	365D	EPDs	CE	BW	WW	YW	M	TM
	90	649	n/a		4.1	1.4	42	76	19	40

HORNED



LOT 35

BY

LOT 35

Leptin tested TT. 9F is our only Custom Made son this year and he is a tank. Deep, thick, smooth front, length of spine and a nice tidy head. His dam is a nice smooth made good milking cow.

35 CHARLA MOORE CUSTOM MADE 9F

DAM 9F :: January 26, 2018 :: PMC753893 :: Polled

SIRE XAL FIRE IT UP 5A
SIRE **XAL CUSTOM MADE 1C**
GERRARD EVETTA 1A

ROLLING D SAGEBRUSH 74X
DAM **RAMM ABIGAIL 56A**
RAMM TRISTEN 23T

TR MR FIRE WATER 5792RET
MEDONTE WONDER STRUCK 12W
SVY BLITZ 125Y
GERRARD EVETTA 2L
HTA BRAVIA 855U
ROLLING D LIZZIE 467P
BAR J RONDEVOUS 203R
RAMM MELISSA 46M

PERF	BW	actWW	365D	EPDs	CE	BW	WW	YW	M	TM
	108	900	1408		2.8	2.5	43	80	20	42

DOUBLE POLLED

36 CHARLA MOORE ROUND UP 38F

DAM 38F :: February 8, 2018 :: PMC753892 :: Polled

MERIT ROUNDUP 9508W
SIRE **CHARLA MOORE ROUNDUP 1A**
CHARHEAD MISS MEL 20Y

PLEASANT DAWN MAGNUM 49Y
DAM **MCTAVISH JEWEL 42A**
MCTAVISH OASIS 3X

MXS VERMILLION 527R
MERIT YOLANDA 7244T
WINN MANS LANZA 610S
CHARHEAD MISS 37S
HEJ MAGNUM 26R
PLEASANT DAWN RIO 89T
ROLLING D DESIGN 730T
MCTAVISH OASIS 42S

PERF	BW	actWW	365D	EPDs	CE	BW	WW	YW	M	TM
	96	905	1367		5.3	1.2	47	92	20	44

4TH GENERATION POLLED



LOT 36

BY

LOT 36

4th generation polled. 38F and his dam BBMT 42A were champion cow with bull calf at side at the SCA summer showcase held this past July at Mctavish Farms. 38F was also the Reserve champion bull calf that day as well. 38F is the complete package clean head smooth shoulders lots of middle good hind quarter and width. His dam 42A is a big power cow with great feet and a very nice udder.

37 CHARLA MOORE ROUNDUP 24F

DAM 24F :: February 4, 2018 :: PMC753891 :: Polled

MERIT ROUNDUP 9508W
SIRE **CHARLA MOORE ROUNDUP 1A**
CHARHEAD MISS MEL 20Y

HARVIE ONTIME ET 304U
DAM **CHARLA MOORE MISS 16Y**
CHARLO MOORE BEAUTY 4R

MXS VERMILLION 527R
MERIT YOLANDA 7244T
WINN MANS LANZA 610S
CHARHEAD MISS 37S
CRYSTAL D SIR BOOM 60S
HARVIE MS NETTIE 3N
KBK LOCOMOTIVE 6L
RPJ BEAUTY 743G

PERF	BW	actWW	365D	EPDs	CE	BW	WW	YW	M	TM
	108	835	1341		2.2	2.8	42	79	19	40

24F is a bull that will sire those top dollar steers. He is hairy thick natural muscling and homo polled to boot.

HOMO POLLED



38 CHARLA MOORE ROUND UP 37F

DAM 37F :: February 7, 2018 :: PMC753896 :: Polled

MERIT ROUNDUP 9508W
SIRE **CHARLA MOORE ROUNDUP 1A**
CHARHEAD MISS MEL 20Y

C2 A-SERIES 32A
DAM **CHARLA MOORE MISS 49D**
CHARLA MOORE MISS 16Y

MXS VERMILLION 527R
MERIT YOLANDA 7244T
WINN MANS LANZA 610S
CHARHEAD MISS 37S
SODER RHAPSODY 501X
LECA MS IMAGE 76R
HARVIE ONTIME ET 304U
CHARLO MOORE BEAUTY 4R

PERF	BW	actWW	365D	EPDs	CE	BW	WW	YW	M	TM
	97	710	1342		3.9	1.8	46	88	17	40

37F is built for calving ease small head very smooth shoulders but doesn't give up any performance weaning off at 710 lbs Sept 29 off a first calf heifer.

HOMO POLLED



39 CHARLA MOORE ROUNDUP 42F

DAM 42F :: February 9, 2018 :: PMC754041 :: Polled

MERIT ROUNDUP 9508W
SIRE **CHARLA MOORE ROUNDUP 1A**
CHARHEAD MISS MEL 20Y

SPARROWS NOBEL 202Z
DAM **CHARLA MOORE MISS 88B**
LANOIE 259Z

MXS VERMILLION 527R
MERIT YOLANDA 7244T
WINN MANS LANZA 610S
CHARHEAD MISS 37S
SPARROWS ELDORADO 361L
SPARROWS CABERNET 217X
BEAVER CREEK XILE 215X
LANOIE 4X

PERF	BW	actWW	365D	EPDs	CE	BW	WW	YW	M	TM
	83	820	1383		11.8	-3.2	38	75	19	38

A heifer bull with performance. Deep hairy smooth made and sporting a 83 pound birth weight.

DOUBLE POLLED





40 CHARLA MOORE ROUND UP 54F

DAM 54F :: February 17, 2018 :: PMC753895 :: Polled

MERIT ROUNDUP 9508W
SIRE **CHARLA MOORE ROUNDUP 1A**
CHARHEAD MISS MEL 20Y

JWX WHEEL N DEAL 708W
DAM **CHARLA MOORE WEDNESDAY66B**
LANOIE WEDNESDAY 176W

MXS VERMILLION 527R
MERIT YOLANDA 7244T
WINN MANS LANZA 610S
CHARHEAD MISS 37S
JWX REVOLUTION 547R
BAR K PASSION 19T
HTA MCGARVA 608S
LANOIE MERILEE 22M

PERF	BW	actWW	365D	EPDs	CE	BW	WW	YW	M	TM
	108	840	1478		4.5	1.8	46	93	22	44

Powerhouse. 54F has a ton of meat and muscle and length of spin. If your looking to add pounds to your calves next fall take a look here.

HOMO POLLED



41 CHARLA MOORE ROUND UP 98F

DAM 98F :: March 24, 2018 :: PMC753899 :: Polled

MERIT ROUNDUP 9508W
SIRE **CHARLA MOORE ROUNDUP 1A**
CHARHEAD MISS MEL 20Y

LEJ ZEPLIN 233Z
DAM **CHARLA MOORE PANSY 9C**
DCV MS PANSY 5P

MXS VERMILLION 527R
MERIT YOLANDA 7244T
WINN MANS LANZA 610S
CHARHEAD MISS 37
JWX PRIVATE RYAN 505U
LEJ MS CUTIE PIE 718T
MOORE'S LARIAT 136L
DCV JOLENE 2J

PERF	BW	actWW	365D	EPDs	CE	BW	WW	YW	M	TM
	99	690	1371		4.9	0.9	41	82	20	41

98F is a March 24 calf with good hair really nice muscle pattern that will sire those top end calves. Full brother sold to Richard Jorgenson, Redvers in last years sale.

DOUBLE POLLED



Reference Sire

CHARLA MOORE ROUNDUP 1A

DAM 1A :: January 1, 2013 :: PMC351596 :: Polled

MXS VERMILLION 527R
SIRE **MERIT ROUNDUP 9508W**
MERIT YOLANDA 7244T

WINN MANS LANZA 610S
DAM **CHARHEAD MISS MEL 20Y**
CHARHEAD MISS 37S

SOS POLLED DETONATOR 8M
MXS ESPEON 122L
MERIT 1058L
MERIT YOLANDA 6116F
SPARROWS DURANGO 585P
WINN MAN MERIT 036K
PALADIN
CHARHEAD MISS 49M

PERF	BW	actWW	365D	EPDs	CE	BW	WW	YW	M	TM
					6.9	0.5	46	92	16	39



LOT 42

There is no need to convince anyone of the outstanding quality of this bull. He has been a standout from the very start. He is extremely well balance and exhibits a tremendous amount of depth of rib. He stands strong on his feet and legs and I think he is one of those whole package deals. His dam is a cow we bought out of the Sunset Ridge Red Angus dispersal. She is one of those broody type females that we like working with so much here at our operation.

42 RED MCTAVISH ADVANTAGE 45F

BBMT 45F :: February 22, 2018 :: 2019716

SIRE RED SSS STAUNCH 64Y
RED SSS STANDOFF 139B
RED SSS BLOCKANNA 275Z

DAM RED LCC FIELD DAY A614N
RED SUNSET RIDGE FOREVER 21Z
RED TOP LINE HEATHER 14X

RED SSS OLY 554T
RED SSS SCAARA 429W
RED SSS ENDORSE 639X
RED SSS BLOCKANNA 61U
RED BFCK CHEROKEE CNYN 4912
RED LCC PRINCESS LA099
RED TOPLINE RANCHMAN 838
RED TOP LINE HEATHER 316

PERF	BW	actWW	365D	EPDs	CE	BW	WW	YW	M	TM
	85	705	1385		-2.0	2.8	59	101	23	52

CANADIAN ANGUS AVERAGE EXPECTED PROGENY DIFFERENCES FOR RED CALVES BORN IN 2018

EPDS ce2.5 | bw1.2 | ww35 | yw59 | milk19 | tm37 |



43 RED MCTAVISH PAYCHECK 30F

BBMT 30F :: January 24, 2018 :: 2019702

SIRE RED SSS STAUNCH 64Y
RED SSS STANDOFF 139B
RED SSS BLOCKANNA 275Z

DAM RED JJL PAYCHECK 15W
RED MCTAVISH SANDY 30Y
RED MCTAVISH SCAARA 19W

RED SSS OLY 554T
RED SSS SCAARA 429W
RED SSS ENDORSE 639X
RED SSS BLOCKANNA 61U
RED SOO LINE NORTHERN 5291
RED RIVERDALE TEWSOX 564N
RED CHOPPER K OZZI 109T
RED MCTAVISH SANDY 3T

PERF	BW	actWW	365D	EPDs	CE	BW	WW	YW	M	TM
	94	770	1269		-2.0	3.3	55	91	21	49



44 RED MCTAVISH HIGHTIDE 34F

BBMT 34F :: January 8, 2018 :: 2019685

SIRE RED SSS STAUNCH 64Y
RED SSS STANDOFF 139B
RED SSS BLOCKANNA 275Z

DAM RED JJL PAYCHECK 15W
RED MCTAVISH REBECCA 10B
RED DOUBLE C REBECCA 7U

RED SSS OLY 554T
RED SSS SCAARA 429W
RED SSS ENDORSE 639X
RED SSS BLOCKANNA 61U
RED SOO LINE NORTHERN 5291
RED RIVERDALE TEWSOX 564N
RED DOUBLE C ROMERO 41R
RED DOUBLE C REBECA 497K

PERF	BW	actWW	365D	EPDs	CE	BW	WW	YW	M	TM
	83	690	1210		-3.0	3.5	48	79	19	43



45 RED MCTAVISH ZIPLINE 47F

BBMT 47F :: January 19, 2018 :: 2019696

SIRE RED SSS STAUNCH 64Y
RED SSS STANDOFF 139B
RED SSS BLOCKANNA 275Z

DAM RED JJL PAYCHECK 15W
RED MCTAVISH REBA 26A
RED MCTAVISH SCAARA 12W

RED SSS OLY 554T
RED SSS SCAARA 429W
RED SSS ENDORSE 639X
RED SSS BLOCKANNA 61U
RED SOO LINE NORTHERN 5291
RED RIVERDALE TEWSOX 564N
RED CHOPPER K OZZI 109T
RED MCTAVISH REBA 90R

PERF	BW	actWW	365D	EPDs	CE	BW	WW	YW	M	TM
	91	675	1332		-3.0	3.2	49	81	17	42

46

RED MCTAVISH YUMA 48F

BBMT 48F :: January 25, 2018 :: 2019703

RED SSS STAUNCH 64Y
SIRE **RED SSS STANDOFF 139B**
RED SSS BLOCKANNA 275Z

RED T-K FORTUNE HUNTER 95Z
DAM **RED MCTAVISH C-LINE 43B**
RED MCTAVISH BETTY 42Z

RED SSS OLY 554T
RED SSS SCAARA 429W
RED SSS ENDORSE 639X
RED SSS BLOCKANNA 61U
RED U2 MISSION IMPOSSIBLE 150W
RED D-BAR SOXRO 61W
RED 5L TRAVLIN EXP 1892-6295
RED HAMCO C-LINE 81X

PERF	BW	actWW	365D	EPDs	CE	BW	WW	YW	M	TM
	99	730	1373		-10	5.9	64	113	22	54

**2-year-old BULLS**

46

RED MCTAVISH REVOLVER 1E

BBMT 1E :: January 20, 2017 :: 1960934

RED CROWFOOT MOONSHINE 8081U
SIRE **RED HOWE MOONSHINE 13C**
RED HOWE ENVIOUS 151A

RED JJL PAYCHECK 15W
DAM **RED MCTAVISH REBA 12B**
RED MCTAVISH SHAWNIE 12X

CROWFOOT 6004S
RED CROWFOOT BRNDINA 6359S
RED C.WARD'S SURE SHOT 17Y
RED HOWE MS ENVIOUS 213U
RED SOO LINE NORTHERN 5291
RED RIVERDALE TEWSOX 564N
RED CHOPPER K OZZI 109T
RED MCTAVISH REBA 90R

PERF	BW	actWW	365D	EPDs	CE	BW	WW	YW	M	TM
	80	710	1262		1.0	2.5	44	62	12	34



47

RED MCTAVISH STANDOUT 3E

BBMT 3E :: January 17, 2017 :: 1960931

RED SSS STAUNCH 64Y
SIRE **RED SSS STANDOFF 139B**
RED SSS BLOCKANNA 275Z

RED JJL PAYCHECK 15W
DAM **RED MCTAVISH SHAWNEE 34C**
RED MCTAVISH SCAARA 1X

RED SSS OLY 554T
RED SSS SCAARA 429W
RED SSS ENDORSE 639X
RED SSS BLOCKANNA 61U
RED SOO LINE NORTHERN 5291
RED RIVERDALE TEWSOX 564N
RED CHOPPER K OZZI 109T
RED MCTAVISH ABELEEN 91R

PERF	BW	actWW	365D	EPDs	CE	BW	WW	YW	M	TM
	72	655	1244		2.0	1.4	46	73	20	43





48

RED MCTAVISH INFINITY 23E

BBMT 23E :: February 4, 2017 :: 1960950

SIRE RED SSS STAUNCH 64Y
RED SSS STANDOFF 139B
 RED SSS BLOCKANNA 275Z

DAM RED CHOPPER K OZZI 109T
RED MCTAVISH SCAARA 10W
 RED MCTAVISH SANDY 8T

RED SSS OLY 554T
 RED SSS SCAARA 429W
 RED SSS ENDORSE 639X
 RED SSS BLOCKANNA 61U
 RED TER-RON MAMBO 28K
 RED CHOPPER K SCAARA 216M
 RED DAK SANTIAGO 58R
 RED MCTAVISH SHAWNEE 82M

PERF	BW	actWW	365D	EPDs	CE	BW	WW	YW	M	TM
	84	660	1331		-1.0	2.6	48	90	19	43



49

RED MCTAVISH TROJAN 42E

BBMT 42E :: February 21, 2017 :: 1960958

SIRE RED SSS STAUNCH 64Y
RED SSS STANDOFF 139B
 RED SSS BLOCKANNA 275Z

DAM RED CHOPPER K TOP DESIGN 64R
RED HAMCO C-LINE 81X
 RED HAMCO C-LINE 348T

RED SSS OLY 554T
 RED SSS SCAARA 429W
 RED SSS ENDORSE 639X
 RED SSS BLOCKANNA 61U
 RED LCHMN TOP BRASS 1049H
 RED SSS SOAPY 607K
 RED GLACIER NYACK 688
 RED HAMCO C-LINE 317N

PERF	BW	actWW	365D	EPDs	CE	BW	WW	YW	M	TM
	89	735	1339		-3.0	3.4	55	97	18	46





- Twine and Netwrap
- Hay Preservative Equipment and Supplies
- Silage Film
- Silo Gard



#12 Larsen Road, Redvers, Sask. S0C2H0
Ph: 306.452.3418 Fax: 306.452.3277



HEAD FOR THE HILLS

VETERINARY HEALTH SERVICES INC.

Dr. Clarke Hill • Dr. Christine Ewert-Hill
Dr. Rafael Pineda

- Protect your livestock investment
- Will do semen collection & freezing
(for owner's on-farm use only)
- Will do breeding soundness evaluation

Phone Redvers Clinic for more information

306.452.3558

head4thehillsredvers@hotmail.com



Box 10 • Wauchope, SK • S0C 2P0
www.keymauctions.com

A.L.#304543

Dellan & Donna Mohrbutter
Auctioneer

t. 306.452.3815
c. 306.452-7847
f. 306.452-3733
auctionkeym@gmail.com
d.mohrbutter@sasktel.net

Dennis (Porky) Seymour
Auctioneer & Sales Rep

t. 306.485.8766

Murray Rossow

Sales Rep
t. 306.483.7454

UPCOMING SALES

April 6 - Antique & Hardware Sale, Manor, S>K

April 17 - Farm Auction Sale for Benny Luhr, Arcola, SK

April 20 - Small Animal & Bird Sale, Redvers, SK

April 28 - 20th Annual Spring Consignment Sale, Wauchope, SK

May 4 - Farm Auction Sale for Greg Jim Darrall Gilroy, Oxbow, SK

May 11 - Estate Sale for Leo Neuman, Alameda, SK

June 1 - Household & Antique Sale for Estella Taylor, Carnduff, SK



WELCOME TO THE
Next Generation
of Feed Processors

NORHEIM NOR RANCHING

Your Livestock Equipment Specialists

Lee Norheim - Owner
1.306.227.4503

Kelcy Elford - South West Sask
1.306.690.5209



WWW.NORHEIMRANCHING.COM

FAIRVIEW WELDING

- 30' Free Standing Panels
- 30' Wind Break Frames
- Bale Feeders

We can build to your specs

Darcy Van Sprundel, Wauchope, SK
306.452.3615 C 306.452.8038



REDVERS AGRICULTURAL & SUPPLY LTD.

New & Used Equipment Dealer

*Bale King, Degelman,
Farm King, Sakundiak, Schulte,
Seed Master, Versatile, MacDon*

Grain Seed, Grasses
and Custom Cleaning

Hwy #13 & #8, Box 150, Redvers, SK S0C 2H0
Ph: 306-452-3444

F: 306-452-3543 Seed Office: 306-452-3443
Email: redvers.agricultural@sasktel.net

MAZERGROUP

Come see us for all your sales,
parts and service needs!



OK TIRE[®]

& AUTO SERVICE

A & T TIRE LTD. ALEX HATTUM

Tel: 306.435.2220
Fax: 306.435.4914
505 Moose Street
Moosomin, SK S0G 3N0



PLAN AHEAD AND SAVE



PATTISON PRE-OWNED



www.PattisonAg.com

3M BEEF

Supplies Inc.

Specializing in Beef Nutrition

**ALL
PRODUCTS
DELIVERED!**

DISTRIBUTOR OF:

- Netwrap
- Silage Plastic & Grain Bags
- Licktubs
- Hay & Silage Inoculant
- Feed Testing

**CONTACT
David Moffatt**

Cell: 306-435-9245

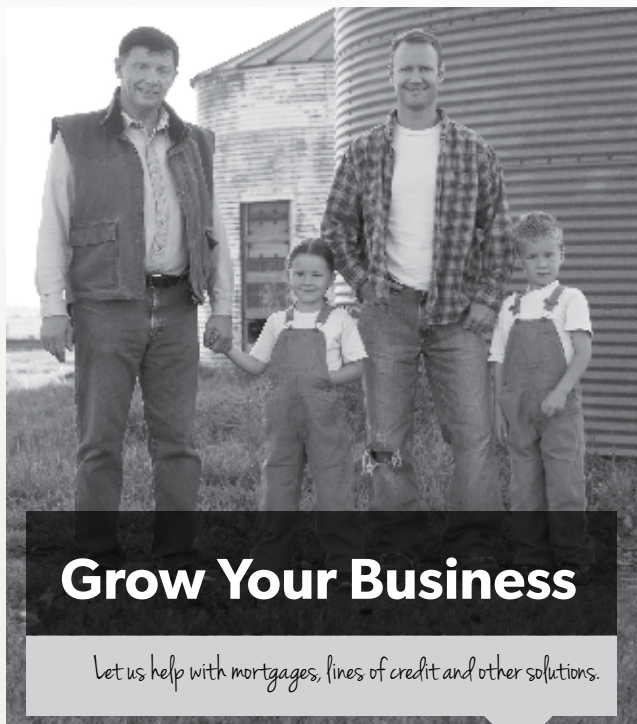
Home: 306-435-2019

sdmoffatt@sasktel.net

Box 24

Moosomin, SK

S0G 3N0



Grow Your Business

Let us help with mortgages, lines of credit and other solutions.

- Agriculture Accounts
- Loans
- Mortgages
- Farm Succession Planning
- Retirement Savings
- Insurance


1.800.667.7477
conexus.ca


conexus
Credit Union

HIGH-PERFORMANCE FERTILITY

precision ag

core

 PRECISIONAG1

 PRECISIONAG1

 PRECISIONAG1

(306) 457-2220, GRIFFIN SK | (306) 453-2255, CARLYLE SK

(306) 957-2220, ODESSA SK | (306) 482-4343, CARNDUFF SK

WWW.PRECISION-AG.COM

SHARPE'S

●●●●● CROP SERVICES



MAKE YOUR MOOOVE!

EARLY FORAGE OFFERS

We will take care of all your forage needs!

Talk to your local Sharpe's Agronomic Advisor today for details on the right forage for your field, individualized blends and how to take advantage of early forage offers.

Focused on Your Field



www.sharpes.ca



Angusville	Moosomin	Rocanville	Wapella
204.773.2466	306.435.3319	306.645.4555	306.532.4372



RVS

RANCHLAND

VETERINARY SERVICES

Tyson Buyer DVM
Box 65
Carnduff, SK S0C 0S0
306.482.1010
306.339.7673
ranchlandvet.ca

On Farm Embryo Transfer Services
~ Donor Housing ~ Recipient Herd ~
~ Owners Use Semen Collection ~
~ Embryo & Semen Storage and Distribution



FARM AND RANCH SUPPLY LTD.

Offering quality products
and everyday service you can trust!

- Assorted Feeds: Poultry, Swine, Horse and Cattle
- Right Now Minerals (Emerald, Onyx & Bronze)
 - Ritchie Water Bowls and Parts
- Nutri Source & Tuffy's Dog and Cat Food
- Custom Fencing and General Construction

J. Charles Adair

GENERAL MANAGER

1402 North Front Street
P.O. Box 1738, Moosomin, SK S0G 3N0

Office: 306-435-4211 Cell: 306-435-7871

Email: info@adairsales.com

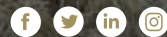
Website: www.adairsales.com

AT RICHARDSON PIONEER, WE ARE
TRULY INVESTED BECAUSE YOU ARE.



ANTLER AG BUSINESS CENTRE 306.452.3605

RICHARDSON
PIONEER



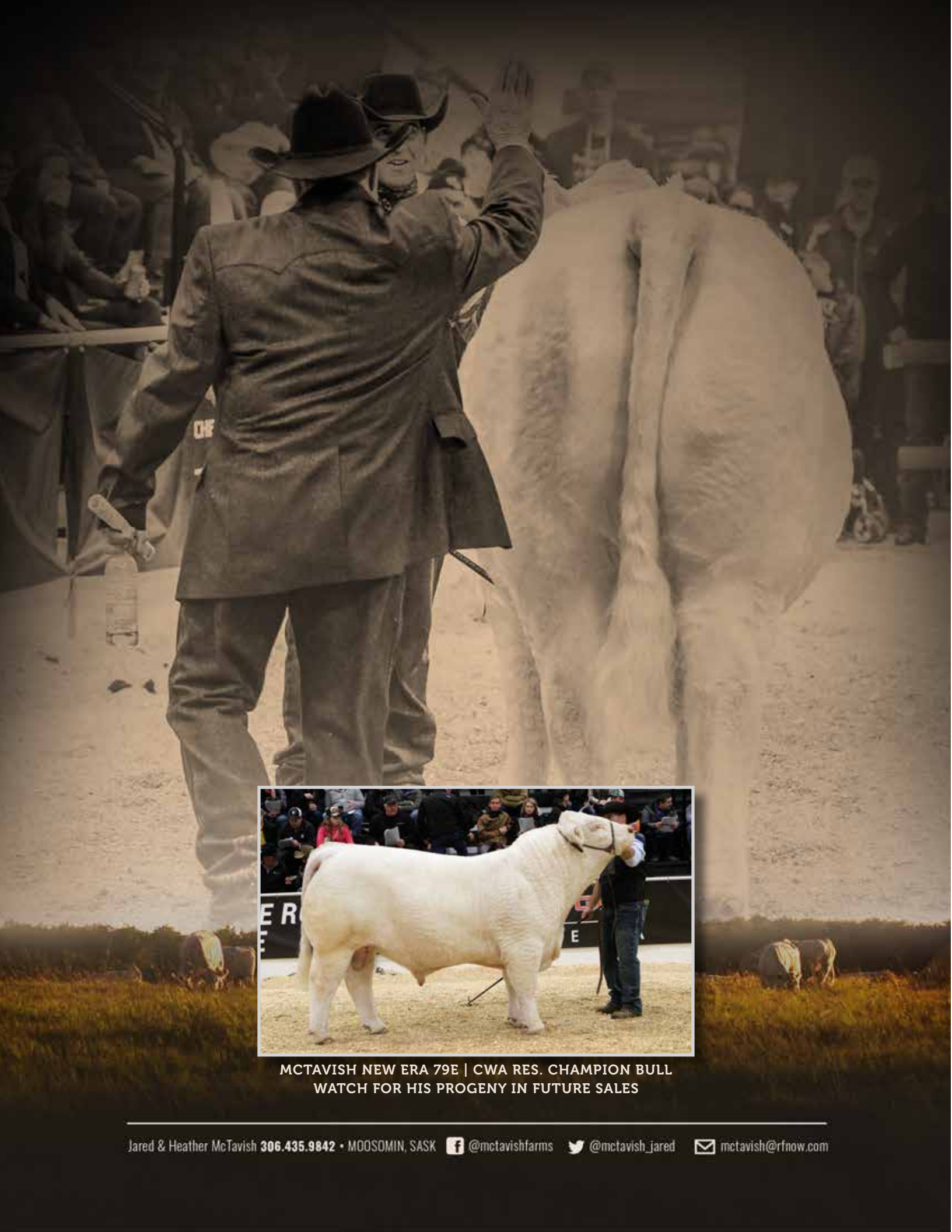
richardson.ca

KVS TRANSPORT

KORBIN VAN SPRUNDEL TRUCKING

**BOX 323, REDVERS, SK
S0C 2H0**

**1-306-452-8870
korbino@msn.com**



**MCTAVISH NEW ERA 79E | CWA RES. CHAMPION BULL
WATCH FOR HIS PROGENY IN FUTURE SALES**

Terms & Conditions

TERMS The terms of this sale are cash or cheque payable at par at the sale location. The right of property shall not pass until after settlement is made. All settlements must be made with the clerks of the sale before any cattle will be released.

ANNOUNCEMENTS All announcements from the auction block will take precedence over the printed matter in the catalogue. Buyers are therefore cautioned to pay attention to such announcements.

BIDS Every animal consigned to this sale must be sold by auction. No private sales will be allowed except otherwise provided for in the terms and conditions. No buy-bidding will be permitted. Each animal will be sold to the highest bidder. Mail or wire bids may be furnished in the confidential form to the sale consultant, auctioneer or ringman. Bids must be received in sufficient time prior to the sale.

BREEDER'S GUARANTEE Bulls: Should any bull fourteen (14) months of age or over fail to prove a breeder after being used on cows known to be breeders, the matter shall be reported to the seller within six (6) months after the bull has reached fourteen (14) months of age. The seller will then have the right and privilege of six (6) months to prove the bull a breeder. No guarantee is given that semen collected from the bull will freeze. The seller is not responsible for damage caused by foreign bodies after the animal has been sold nor for sickness not apparent at sale time.

EXCEPTION TO GUARANTEE In cases where the animal is subject to any hormonal or surgical reproduction techniques after the sale, this guarantee shall be null and void.

SETTLEMENT Transportation charges on animals returned to the seller are for account of the purchaser. No incidental expenses such as feed, signing fees, interest, veterinary charges, etc. will be charged by any party by making settlement. If the seller is successful in proving the animal in question to be a breeder, then said animal will be reclaimed by the purchaser at his expense. Should satisfactory replacement, FOB ranch or location of origin or a refund of the actual purchase price paid FOB, selling point. In no event shall the seller be responsible for more than the purchase price paid. Should a dispute arise of the quality of a replacement animal, the executive committee will act as mediators.

CERTIFICATE OF REGISTRY The proper registration papers, as the case may be, will be dually transferred and furnished to the buyer for each animal after settlement has been made.

PURCHASER'S RISK Each animal becomes the risk of the purchaser as soon as sold. Animals will be cared for at the purchasers risk for a reasonable amount of time.

DELIVERY Every effort shall be made to assist buyers in arranging transportation.

ACCIDENTS Although every precaution will be taken to protect the safety and comfort of buyers, neither the sales consultant, auctioneer, or breeder assumes any responsibility in this matter and disclaims any responsibility, legal or otherwise, in the event of accident or loss of property.

RIGHTS & OBLIGATIONS The above mentioned terms and conditions of the sale shall constitute a contract between the buyer and the seller and be equally binding to both. Resale of the animals following purchase of this sale shall constitute a separate transaction and the rights and obligations by the terms and conditions of this sale.

SALES GUARANTEE All cattle will be sold under the Canadian Charolais Association code of ethics.

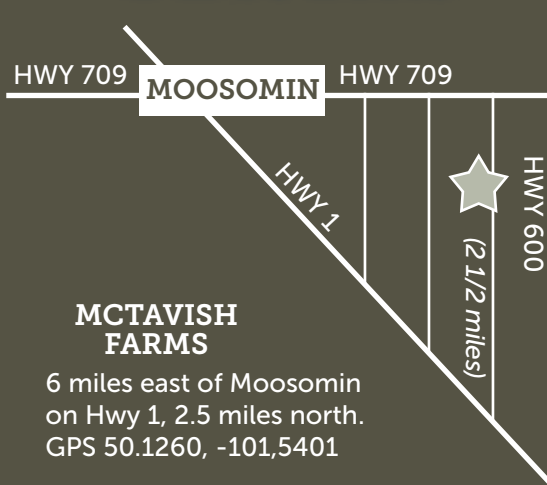
ONLINE **bidding** WWW.DLMS.CA

To view this sale on the Internet, visit www.dlms.ca prior to sale day to sign up for a free user account by clicking the "register" tab.

To be approved as a bidder, log in and click the "buyer approval" tab, select the **McTavish Bull Sale** then click "sign up."

WHITNEY BOSOVICH 780-991-3025
MARK SHOLOGAN 780-699-5082

Directions



BELLA SPUR CREATIVE
Box 567, Alix, Alberta T0C 0B0

TIME SENSITIVE MATERIAL



MCTAVISH FARMS BULL SALE
with guest CHARLA MOORE FARMS

FRIDAY MARCH 22 2019
1:30PM AT THE FARM **MOOSOMIN, SK**