



# SOUTHLAND ANGUS DISPERSAL SALE

December 1, 2012 • 1:00 pm  
Heartland Livestock • Swift Current SK



# SOUTHLAND ANGUS



## Black Angus Dispersal Sale

### Table of Contents

- Page 2 - Sale Information
- Page 3 - Welcomes to the Dispersal
- Page 5 - Feature "Thriller Lot"
- Page 7 - Cows with Heifer Calves
- Page 29 - Cows with Bull Cales
- Page 57 - Herdsires
- Page 60 - Norseman Cows
- Page 68 - Semen

### Schedule of Events

#### Any Time Prior to the sale.

- Cows at the Farm for Viewing.  
Call Shane to arrange viewing.

#### Thursday, November 29

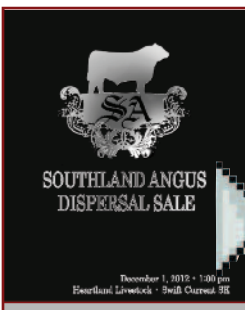
- Cows Moved to HLS Swift Current, SK  
Cattle available for viewing

#### Friday, November 30

- Cattle available for viewing all day  
5:00 pm Evening Social at HLS

#### Saturday, December 1

- Cattle available for viewing  
12:00 noon Lunch Served  
1:00 pm SALE TIME



View Sale Catalogue,  
sale updates and  
additional information  
online at:

[www.southlandangus.ca](http://www.southlandangus.ca)  
[www.dlms.ca](http://www.dlms.ca)

### Southland Angus Shane & Lexi Cadieux

Cole and Chael

Box 490 • Shaunavon, SK S0N 2M0

Phone: 306 297-2904

Shane Cell: 306 297-7781 • Lexi Cell: 406 633-0369

Email: [scadieux@sasktel.net](mailto:scadieux@sasktel.net)

Website: [www.southlandangus.ca](http://www.southlandangus.ca)

### Sale Management:



## Heartland Livestock Services

Heartland Livestock Services  
Swift Current, SK  
Bus: (306) 773-3174

Located on Hwy #1,  
3 miles West of Swift Current, SK

#### HLS Staff

Lee Crowley 306 773-3174

Don Peacock 306 662-8288

Richard Galliger 306 741-5115

Dallas Korfeld 306 741-8331

#### Internet Bidding Available

D | L | M | S  
[www.dlms.ca](http://www.dlms.ca)

For More Info on Internet Bidding or Approval  
Contact: Mark Shologan 780-699-5082



# Southland Angus Black Angus Dispersal Sale

**Saturday, December 1, 2012**

Lunch 12:00 Noon • Sale Time 1:00 PM  
At Heartland Livestock - Swift Current, SK

**SOUTHLAND ANGUS**

## Sale Location

Located 3 miles west of  
Swift Current, SK on Highway 1.

## Sale Staff

### Auctioneer:

Don Peacock 306 662-8288

### Ringmen:

Dennis Ericson 780 361-9347

Nathan Marin 306 869-7130

Don Ravellette 605 685-5147

## Sale Consultants:

### Rocking H Livestock

Tony Heins 701 400-4435

### Direct Livestock Marketing Systems - DLMS

Mark Shologan 780 699-5082

### Canadian Angus Hall of Fame

Hugh Ross 403 363-3539

**Ben Wright** 519 374-3335

**Bodie Winters** 406 861-4040

### Castlerock Marketing

Shane Castle 306 741-7485

### Bohrson Marketing Services

Scott Bohrson 403 370-3010

Geoff Anderson 306 731-7921

Colton Hamilton 403 507-5416

Brad Buchanan 519 400-0668

### McCune Marketing

Kent McCune 817 602-8629

### Cattle Business Weekly

Don Ravellette 605 685-5147

## Special Representation

<b>Rob Smith</b>	<b>CEO CAA</b>
<b>Brian Good</b>	<b>CAA Filed Representative</b>
<b>Gary Latimer</b>	<b>CAA President</b>
<b>Dale Easton</b>	<b>SAA President</b>
<b>Dave Callaway</b>	<b>Angus World</b>

## Sale Day Phones:

**Heartland Livestock Services**

**306 773-3174**

**Shane Cadieux 306 297-7781 Cell**

**Lexi Cadieux 406 633-0369 Cell**

**Mark Shologan - DLMS**

**780 699-5082 Cell**

## Accommodations:

Home Inn & Suites 306 778-7788

*Block of rooms saved under Southland Angus*

Howard Johnson 306 778-7730

*Block of rooms saved under Southland Angus*

Best Western 306-773-4660

Country Lane Inn 306-773-4668

Super 8 306-778-6088

*For assistance with accommodation please contact Lexi*

## Insurance:

### Livestock Insurance Managers

Bonnie Thompson, Alameda Agencies

(306) 489-2258 or cell (306) 483-7311

## Trucking Options:

### Flying N Purebred Livestock Hauling

Nathen Stone 780 312-4420

### H.S Knill Transport

519 442-3106 519 442-3106

*All cattle will ship directly from HLS Swift Current. We will assist in arranging loads across Canada & the US.*

*All costs will be at the cost of the new owners/ buyers.*

## US Exchange / Shipping:

U.S. Money will be accepted at the current rate of exchange announced prior to the sale. Southland will take care of all health testing and export papers required to export. All costs will be the responsibility of the buyer. No Cattle will be shipped until Full payment for cattle has been made.

## *Welcome from Heartland Livestock*

Welcome to the Southland Angus Dispersal Sale. As commercial cattle market operators it is a very proud and boastful day for us to handle the great Southland Dispersal Sale. Heartland Livestock Swift Current markets some 100,000 head of cattle annually and we have come to expect that some of our top cut loads of cattle offered are progeny of this great Southland Program and a result of progeny from their successful bull sales.

We realize Southlands show ring record is one of the top in the nation but we believe the program's success has been verified and validated with the fame and success Southland customers have achieved selling calves through this auction ring in Swift Current. The Cadieux family's eye for cattle has been a key for finding and breeding the right kind that make their and our customers money when they sell their calves in the fall.

With many regrets we hate to see Shane & Lexi, Ken & Irene & Family and the Southland Angus name leave the seed stock business but this dispersal is a precious opportunity for you to take advantage of the real world set of working cows that have excelled in both the show & commercial auction ring. Bull customers don't forget that the bull calves and herd bulls will be offered in this great sale. This will be your last chance to purchase a Southland bull and this is a great opportunity to purchase this fall before the crazy spring bull sale market.

If any of the crew from HLS Swift can be of assistance please feel free to contact us and we can help you with any of your sale needs. We look forward to seeing you in Swift Current on December 1st.

Sincerely,

*Lee Crowley*

Market Manager



*Don Peacock*

HLS Auctioneer



**Heartland  
Livestock Services**



## *Welcome from Rocking H Livestock*

The only thing that's constant is change and there is a big change coming to Shaunavon, Saskatchewan on December 1st with the dispersion of Southland Angus.

The Southland program has been responsible for several national champions as well as having many successful bull and female sales. This cowherd has withstood the test of time. Through the wet cycles, the dry cycles the high prices and the low, the Southland cows were always bred with the commercial cattleman in mind.

This program has produced many well known sires such as Hotline, Dr. Feelgood, Free Ride, Freestyle, and the most recent, Southland Thriller, who as a calf sold for \$57,000 in the Trowbridge and Friends Sale in Denver, CO. He went on to be named the 2011 Grand Champion Angus Bull at Agribition. These bulls are a testament to how strong this cowherd really is.

We would like to thank Shane and his family for being a long time customer of Rocking H Livestock Services. Even as our focus has changed from custom fitting to marketing, Southland has supported us and we are grateful to help Shane write the final chapter on Southland Angus.

It would be our pleasure to help you make your selections from the Southland Angus Dispersion. For those of you in the U.S., we are experienced in importing cattle to the U.S. and look forward to working with you.

*Tony and Tamra Heins*

Rocking H Livestock Services



**ROCKING H  
LIVESTOCK**  
TONY & TAMRA HEINS

**Tony Heins 701 400-4435**  
3320 45th ave, New Salem, ND 58563  
info@rockinghlivestock.com

## *Vet Letter*

The Southland Angus herd has always been under a complete herd health program. The cows have been given Bovishield Gold FP5+L5 (IBR PI3, 2 strains of BVD, BRSV, and 5 strains of Lepto); Vibrin (vibrio); Vision 7 (clostridials) and ScourBos 9 (scours). They also receive Ivomec twice per year.

The calves receive vaccinations at 2 ½ months and again at 7 months of age. Vaccinations include Somnustar PH (pneumonia and ITEME); Starvac 4 (IBR PI3, BRSV and 2 strains of BVD) and Vision 7 (clostridials). Ivomec is given every 6 months.

Shaunavon Animal Clinic  
Dr. Ken Cadieux, DVM

# *Welcome to the Dispersal Sale*

It is with great pride that Lexi and myself present our cow herd to the public. This is to date, the measure of my lifetime achievements. To breed maintenance free cattle that make our customers money. Right out of high school, I started breeding cattle and learned that no animal is perfect. Once I accepted this, all Southland cows got bred accordingly. One must be humble, and yet proud, to breed cattle. Humble enough to know that there is always room for improvement, but also proud and confident enough to know your product works. Along the way I've had many people try and advise me on how to properly breed cows. I listened to all of them, formed my own decision, and did exactly what I wanted to do. There are lots of people in this industry who will give us advice, but ultimately we are the masters of our own destination. Following a trend is great business for the individual who set the trend. When studying Southland pedigrees, one can see a program that follows its own course. When studying Southland Angus phenotype, one can see what an opportunity the Angus breed has on December 1; an opportunity to begin making your own mark in the breed. Remember, all great breeders first had to purchase great cattle.

In this sale you will notice Norseman Farms as a consigner. We have been leasing a group of cows from them for the last few years. Both Norseman Farms and ourselves have decided to put those cows in the sale. The calves off these cows are Southland bred and owned, however, the cows are consigned by Norseman Farms. We have had great luck with these cows, as you will see by the outstanding set of calves sired by Southland Dr Feelgood 194S. So, we know they will go out and work for others.

Now, to answer the question everyone has asked, why? I love Angus cattle and as many of you know, I love attending Angus events. But, there comes a time in life when we all have to make decisions. Living in the middle of oil country makes it hard to find dependable help, and to do things properly takes a lot of time and travel. I enjoy all these things, but more than anything I love my wife Lexi, and our two sons Cole and Chael. So, for the time being we are going to expand our grain farming and get into commercial cattle. This will keep us closer to home for all the football, lacrosse, hockey and 4-H functions our kids are involved in.



With that being said, this really, truly is a happy dispersion. No death, divorce, or bank has induced this sale. Only one man's love for his family and his cattle.

*Shane Cadieux*

[www.southlandangus.ca](http://www.southlandangus.ca)



**1** **SOUTHLAND BELLE 89R**

January 27 2005      CADS 89R      CAA #1289697  
 BW: 84lbs.      WW: 644 lbs.      DONOR COW

VERMILION DATELINE 7078 AMF CAF NHF  
 Sire: **VAR DATELINE 2674 (1266161)**  
 VAR MORIAH 6606

SUNMOUND ESTON 25E  
 Dam: **GER-RIS BELLE 26J (992880)**  
 RONAN R BELLE 3F

CONNEALY DATELINE  
 VERMILION BLACKBIRD 5044  
 WK REAL TIME  
 V A R MIRA 475  
 SUNMOUND ESTON OF YORK 26Y  
 SUNMOUND TIPTOP 3U  
 RONAN ALBERTAN 92A  
 RONAN BELLE 106Z

Sells Open Ready to Flush  
 SELLS WITH 2 STRAWS OF  
 SOUTHLAND TWO FIFTY 250T SEMEN

DPR	BW	WW	YW	MILK	TM
+3.9	+36	+70	+23	+41	



**Southland Sense 101Y – Son of Lot 1**  
 Purchased by Joseph Halyung



- The dam of the reigning Canadian Western Agribition Grand Champion Bull. Only a select few Angus cows ever boast this title.
- Aside from this incredible achievement, 89R has accomplished so much more. Her most current, and perhaps greatest, is her 2012 heifer calf by TW Upward 35X. This heifer would be hard to beat upon entering any show ring.
- Belle 89R has also conquered the flushing world. Two successful flushes so far this year have resulted in 37 grade 1 embryos.
- As a side note, there are only 2 straws of Southland Two Fitty 250T semen left in the world. Purchase Lot 1 & 1D for your only chance to make full siblings to the great breeding bull Southland Thriller 83X!!

**1A** **SOUTHLAND BELLE 60Z**

February 22 2012      CADS 60Z      CAA #1663086  
 BW: 86lbs.      WW: 749 lbs      HEIFER CALF

SITZ UPWARD 307R  
 Sire: **TW UPWARD 35X (1606227)**  
 MAR BLACKCAP 5073

DPR	BW	WW	YW	MILK	TM
+3.9	+52	+97	+27	+53	



**LOT 1A**  
**SOUTHLAND BELLE 60Z**





**Lot 1C**  
**Southland Thriller 83X - CWA Champion**



**Southland Two Fitty 250T**  
**Owned with Currie Angus**

**1C SOUTHLAND THRILLER 83X**

February 02 2010      CADS 83X      CAA #1577848  
 BW: 91lbs.      WW: 913 lbs.      SEMEN INTEREST

TC FREEDOM 104 AMF CAF NHF  
 Sire: **SOUTHLAND TWO FITTY 250T (1395273)**  
 SOUTHLAND LADY 201M

CONNELLY FOREFRONT AMF CAF NHF  
 T C RUBY 9095 CAF  
 PEAK DOT PANAMA 58G  
 CEDAR CREEK LADY 41G  
 VERMILION DATELINE 7078 AMF CAF NHF  
 VAR MORIAH 6606  
 SUNMOUND ESTON 25E  
 RONAN R BELLE 3F

VAR DATELINE 2674  
 Dam: **SOUTHLAND BELLE 89R (1289697)**  
 GER-RIS BELLE 26J

DP	BW	WW	YW	MILK	TM
	+1.7	+52	+85	+23	+49

Selling 10% Semen Interest in Southland Thriller 83X

**1D Southland Two Fitty 250T**

2 Straws Semen Stored at Bow Valley Genetics in Brooks, AB  
 Sire of Southland Thriller 83X      SEMEN

**1E 4 Embryos**

Southland Belle 89R X Southland Two Fitty 250T  
 Full Sibs to Southland Thriller 83X      EMBRYOS

**1G 4 Embryos**

Southland Belle 89R X Southland Two Fitty 250T  
 Full Sibs to Southland Thriller 83X      EMBRYOS

**1F 4 Embryos**

Southland Belle 89R X Southland Two Fitty 250T  
 Full Sibs to Southland Thriller 83X      EMBRYOS

**1H 5 Embryos**

Southland Belle 89R X Southland Two Fitty 250T  
 Full Sibs to Southland Thriller 83X      EMBRYOS



**2**

**SOUTHLAND  
MADISON 156M**

March 23 2012      CADS 126Z      CAA #1667176  
 BW: 78 lbs      WW: 565 LBS      COW

Sire: SANDY BAR BRAVE HEART 86K (1000999)  
 SANDY BAR QUEENETTE 108E

Dam: LAKESHORE 6B BONNIE 14'00 (1020681)  
 BUFFALO COULEE BONNIE 260E

RITO 8094 PRAIRIELANE 2060 AMF  
 CRESCENT CREEK BLACKCAP 112A  
 MACKIE'S BRUTE 4B  
 GFR QUEENETTE 25Z  
 JAY EN DEE PINE DRIVE 22'86  
 ROSS RIVER ALTA 6Y  
 GRASSMERE BIG JIM 1C  
 ANGUS ACRES BONNIE 60X

AI bred BAN Exchanger 23Y on May 4.  
 Exposed to BAN Exchanger 23Y from  
 May 15 – August 30.  
 Due mid-February

DFP	BW	WW	YW	MILK	TM
	+3	+24	+41	+10	-1



**Lot 2A**  
**Southland Madison 126Z**



• One of the greatest daughters of our Sandy Bar Brave Heart bull. 156M puts everything together that a donor prospect needs. With her intriguing pedigree, outstanding production record, and near perfect phenotype, 156M has likely only begun to have her impact on the Angus breed.

**2A**

**SOUTHLAND MADISON 126Z**

March 23 2012      CADS 126Z      CAA #1667176  
 BW: 91lbs.      WW: 690 lbs.      HEIFER CALF

Sire: LIMESTONE BLU RAY W661 (1591075)  
 C&H EVER ENTENSE 4036

DFP	BW	WW	YW	MILK	TM
	+4.4	+36	+58	+15	

**2B**

**SOUTHLAND MADISON 7Y**

February 06 2011      CADS 7Y      CAA #1631535  
 BW: 87lbs.      WW: 578 lbs.      BRED HEIFER

Sire: SOUTHLAND FREE RIDE 68R (1272820)  
 SOUTHLAND ERROLINE 44L

Dam: SOUTHLAND MADISON 156M (1247587)  
 LAKESHORE 6B BONNIE 14'00

CONNELLY FOREFRONT AMF CAF NHF  
 T C RUBY 9095 CAF  
 SCA 03H OF IDEAL 1418  
 SCA ERROLINE 16H  
 CRESCENT CREEK BRAVE HEART 35F  
 SANDY BAR QUEENETTE 108E  
 GILLIS PINE DRIVE 6B  
 BUFFALO COULEE BONNIE 260E

AI bred to BPF Special Focus 504 on May 6.  
 Exposed to Limestone Blu Ray W661  
 May 25 – August 15.  
 Safe to the AI

DFP	BW	WW	YW	MILK	TM
	+4.4	+46	+84	+20	



**Lot 2B**  
**Southland Madison 7Y**







**Southland Two Fitty 250T**  
Son of Lot 3



**Southland Main Street 52W**  
Son of Lot 3

**3**

**SOUTHLAND LADY 201M**

April 23 2002      CADS 201M      CAA #1244862  
BW: 83lbs.                                      COW

O S U PANAMA 4178  
Sire: **PEAK DOT PANAMA 58G** (889349)  
MIA OF PEAK DOT 539E  
CHAMPION HILL GENERAL STONE  
Dam: **CEDAR CREEK LADY 41G** (907410)  
CEDAR CREEK LADY 41B

PAPA EQUATOR 2928 AMF NHF  
D F EMPRESS 6079  
HF WALK-ON 14C  
MIA OF PEAK DOT 604Z  
CENTURY TOUCHSTONE 131  
R&J LADY 1427  
CANADIAN LUMBERJACK  
CEDAR CREEK LADY 51

Exposed to TW Upward 35X  
May 5 – August 30.  
Due to calve later February.

EPD	BW	WW	YW	MILK	TM
	+2.8	+35	+56	+20	

- What can we say about the dam of Southland Two Fitty 250T...
- She is also the dam of Southland Main Street 52W which was our co-high seller in 2010 to LLB Angus. There are several great daughters and granddaughters throughout this catalog. Being the grandma of Thriller, 201M is arguably going to be one of the most influential cows in recent Angus history.
- Her young heifer out of LLB Casino 333W is a great outcross female with as much potential as her mother.

**3B**

**SOUTHLAND LADY 28Y**

February 14 2011      CADS 28Y      CAA #1631608  
BW: 85lbs.                                      WW: 575 lbs.                                      BRED HEIFER

SOUTHLAND FREE RIDE 68R  
Sire: **SOUTHLAND FREE STYLE 163U** (1460243)  
SOUTHLAND ON TIME 21M  
PEAK DOT PANAMA 58G  
Dam: **SOUTHLAND LADY 201M** (1244862)  
CEDAR CREEK LADY 41G

TC FREEDOM 104 AMF CAF NHF  
SOUTHLAND ERROLINE 44L  
KBJ CONQOUR ALL 447J  
DOUBLE J LASS 452A  
O S U PANAMA 4178  
MIA OF PEAK DOT 539E  
CHAMPION HILL GENERAL STONE  
CEDAR CREEK LADY 41B

AI bred to BPF Special Focus 504 May 12.  
Exposed to Limestone Blu Ray W661  
May 30 – August 15.  
Safe to the AI.

EPD	BW	WW	YW	MILK	TM
	+4.3	+40	+70	+19	

**3A**

**SOUTHLAND LADY 151Z**

April 12 2012      CADS 151Z      CAA #1698721  
BW: 82lbs                                      WW<sup>6</sup> 699 lbs.                                      HEIFER CALF

FIGURE 8 ANGUS TOM BOY 509R  
Sire: **LLB CASINO 333W** (1520264)  
LLB KINOCOTRY BEAUTY 317L

EPD	BW	WW	YW	MILK	TM
	+2.9	+26	+42	+15	

**3C**

**SOUTHLAND LADY 17Z**

February 08 2012      CADS 17Z      CAA #1663060  
BW: 77lbs.                                      WW: 617 lbs.                                      HEIFER CALF

MYTTY IN FOCUS AMF CAF NHF  
Sire: **B P F SPECIAL FOCUS 504** (1644193)  
B P F BLACK CASH 341

S A F FOCUS OF E R AMF CAF NHF  
MYTTY COUNTESS 906  
J R SOMETHING SPECIAL AMF CAC NHF  
B P F BLACK CASH 944  
SCHURRTOP MC 2500 AMF CAF  
WERNER FALCON JILT 356R  
PEAK DOT PANAMA 58G  
CEDAR CREEK LADY 41G

WERNER STREET SENSE 247  
Dam: **SOUTHLAND LADY 124X** (1602958)  
SOUTHLAND LADY 201M

EPD	BW	WW	YW	MILK	TM
	+2	+48	+83	+23	

**4****HF ELSIEMERE 37M**

January 12 2002 HAMI 37M CAA #1132609  
 BW: 80lbs. WW: 680 lbs COW

WK ULTIMATUM  
 Sire: **GREENS PREMIUM 7578 (942965)**  
 GREENS LORI 5078

NORTHERN IMPROVEMENT 4480 GF  
 Dam: **C&C ELSIEMERE 0564 (1124970)**  
 SUMMITCREST ELSIEMERE 152C

Exposed to TW Upward 35X  
 May 5 – August 30.  
 Due to calve the end of April.

O S U 6T6 ULTRA  
 WK TILLIE  
 WK RAINFALL  
 G L C MISS ESSO 0708  
 TC STOCKMAN 365  
 BLACKCAP OF R R 5367  
 HOFF PROTOTYPE S C 357  
 SUMMITCREST ELSIEMERE 334U

D	BW	WW	YW	MILK	TM
P	+4	+47	+81	+19	

**4A****SOUTHLAND ELSIEMERE 139Z**

April 05 2012 CADS 139Z CAA #1698713  
 BW: 72lbs. WW: 677 lbs. HEIFER CALF

WK REWARD  
 Sire: **VAR REWARD 9360 (1606228)**  
 VAR RITO SOPHIE 3835

D	BW	WW	YW	MILK	TM
P	+1.3	+51	+96	+17	

**6****SOUTHLAND ERICA 40N**

January 09 2003 CADS 40N CAA #1183810  
 BW: 86lbs. WW: 630 lbs. COW

TC STOCKMAN 365  
 Sire: **DMM TRACTION 109J (985890)**  
 DMM MISS ESSENCE 22B

LAMBS OVERDRIVE 45E  
 Dam: **SOUTHLAND ERICA 75K (1003696)**  
 GNS ERICA LASS 34Z

AI bred to Southland Thriller 83X May 6.  
 Exposed to TW Upward 35X  
 May 25 – August 30.  
 Safe to the AI.

TC STOCKMAN  
 TC PRIDE 0014  
 DMM ESSOTERIC 67R  
 HEATHERDOWN MISSIE 26S  
 WIWA CREEK OVERDRIVE 5'88  
 DOUBLE J BARBARA 465X  
 HOFF HI SPADE S C 491  
 GNS ERICA LASS 48W

D	BW	WW	YW	MILK	TM
P	+5.6	+30	+55	+11	

**6A****SOUTHLAND ERICA 24Z**

February 10 2012 CADS 24Z CAA #1663067  
 BW: 79lbs. WW: 674 lbs HEIFER CALF

SITZ UPWARD 307R  
 Sire: **TW UPWARD 35X (1606227)**  
 MAR BLACKCAP 5073

D	BW	WW	YW	MILK	TM
P	+3.2	+45	+90	+21	

**7****LLB BLACKBIRD 229N**

March 21 2003 LLB 229N CAA #1197626  
 BW: 80lbs. WW: 646 lbs. COW

HF MOST WANTED 46H  
 Sire: **HF CONTROLLER 35L (1071549)**  
 HF LUCY 84J

KILMAURS OSCAR 4F  
 Dam: **KILMAURS BLACKBIRD 19H (1021097)**  
 KILMAURS BLACKBIRD 7F

Exposed to TW Upward 35X  
 May 5 – August 30.  
 Due to calve mid-February.

HF WALKER 107E  
 HFRF ROSEBUD 72F  
 GREENS PREMIUM 7578  
 HF MISS LUCY 8D  
 G D A R OSCAR 711 AMF NHF  
 KILMAURS MISS KELLY  
 CH 054 RITO 0100  
 LLB BLACKBIRD 32A

D	BW	WW	YW	MILK	TM
P	+3.9	+32	+66	+9	

**7A****SOUTHLAND BLACKBIRD 161Z**

APRIL 20, 2012 CADS 161Z CAA# 1701081  
 BW: 81 lbs. WW: 704 lbs HEIFER CALF

FIGURE 8 ANGUS TOM BOY 509R  
 Sire: **LLB CASINO 333W**  
 LLB KINOCENTRY BEAUTY 317L

D	BW	WW	YW	MILK	TM
P	+2.9	+24	+47	+10	+34

**5****BEA OF TULLAMORE 20N**

February 26 2003 GWJ 20N CAA #1184922  
 BW: 83lbs. WW: 595 lbs. COW

A J NORTH STAR  
 Sire: **WHITE LAKE STARWALKER 8H (930071)**  
 WHITE LAKE BLACKCAP 51A

Q A S TRAVELER 23-4 AMF CAF NHF  
 Dam: **DIAMOND D BEA 221J (975616)**  
 DIAMOND D BEA 121E

AI bred to Southland Thriller 83X May 17.  
 Exposed to TW Upward 35X  
 June 5 – August 30.  
 Safe to the AI.

CH 054 RITO 0100  
 J A R MISS ELBA 28  
 GRUBBS EASTWOOD  
 WHITE LAKE BLACKCAP 8W  
 BAND 234 OF IDEAL 3163  
 Q A S BLACKBIRD EVE 601 1  
 BLACK MEADOWS CASEY 25B  
 BLACK VELVET BEA 21A

D	BW	WW	YW	MILK	TM
P	+3	+37	+62	+15	

**5A****SOUTHLAND BEA 89Z**

March 02 2012 CADS 89Z CAA #1699857  
 BW: 84lbs WW: 732 lbs HEIFER CALF

SITZ UPWARD 307R  
 Sire: **TW UPWARD 35X (1606227)**  
 MAR BLACKCAP 5073

D	BW	WW	YW	MILK	TM
P	+3.3	+52	+93	+23	

**6B****SOUTHLAND ERICA 52X**

January 30 2010 CADS 52X CAA #1577840  
 BW: 92lbs. WW: 676 lbs. BRED HEIFER

TC FREEDOM 104 AMF CAF NHF  
 Sire: **SOUTHLAND TWO FITTY 250T (1395273)**  
 SOUTHLAND LADY 201M

DMM TRACTION 109J  
 Dam: **SOUTHLAND ERICA 40N (1183810)**  
 SOUTHLAND ERICA 75K

Exposed to BCAR Preference 122Y  
 May 4 – July 30.  
 Due to calve mid to late April.

CONNELLY FOREFRONT AMF CAF NHF  
 T C RUBY 9095 CAF  
 PEAK DOT PANAMA 58G  
 CEDAR CREEK LADY 41G  
 TC STOCKMAN 365  
 DMM MISS ESSENCE 22B  
 LAMBS OVERDRIVE 45E  
 GNS ERICA LASS 34Z

D	BW	WW	YW	MILK	TM
P	+3.9	+48	+77	+19	+43

**7B****SOUTHLAND BLACKBIRD 73Y**

FEBRUARY 27 2011 CADS 73Y CAA# 1701080  
 BW: 85 lbs BRED HEIFER

H S A F BANDO 1961  
 Sire: **C J PRESTIGE 25T**  
 C J BLACKBIRD 11P  
 HF CONTROLLER 35L  
 Dam: **LLB BLACKBIRD 229N**  
 KILMAURS BLACKBIRD 19H

S A F 598 BANDO 5175  
 J K S MISS CHEYENNE 196  
 TC FREEDOM 104  
 H F BLACKBIRD 61H  
 HF MOST WANTED 46H  
 HF LUCY 84J  
 KILMAURS OSCAR 4F  
 KILMAURS BLACKBIRD 7F 870397

Exposed to BCAR Preference 122Y  
 May 4 – July 30.  
 Due to calve mid – March

D	BW	WW	YW	MILK	TM
P	-	-	-	-	-

**8****SOUTHLAND TIMELY FASHION 57P**

January 29 2004      CADS 57P      CAA #1290356  
 BW: 81lbs.      COW

N BAR EMULATION EXT AMF CAF NHF  
 Sire: **SOUTHLAND MATRIX 24K (1003726)**  
 SOUTHLAND ANNE 79H

KBJ CONQUOR ALL 447J  
 Dam: **SOUTHLAND ON TIME 21M (1289079)**  
 DOUBLE J LASS 452A

Exposed to BAN Exchanger 23Y  
 May 2 – July 30.  
 Due to calve mid-February.

EMULATION N BAR 5522  
 N BAR PRIMROSE 2424  
 OMEGA FONZ 4F  
 CRESCENT CREEK DUCHESS 4B  
 CRESCENT CREEK MAXIMUM 37C  
 LLB KINOCOTRY BEAUTY 403E  
 LLB BRUTE  
 DOUBLE J LASS 272U

DPR	BW	WW	YW	MILK	TM
	+3.2	+28	+38	+10	



**SOUTHLAND ON TIME 21M**  
 DAM OF LOT 8

**8A****SOUTHLAND ON TIME 125Z**

March 22 2012      CADS 125Z      CAA #1667175  
 BW: 81lbs.      WW: 692 lbs      HEIFER CALF

BC 7022 RAVEN 7965  
 Sire: **LIMESTONE BLU RAY W661**  
 C&H EVER ENTENSE 4036

DPR	BW	WW	YW	MILK	TM
	+2.6	+34	+56	+15	

**9****SOUTHLAND MISS TIP 93P**

February 10 2004      CADS 93P      CAA #1240679  
 BW: 79lbs.      WW: 608 lbs.      COW

N BAR EMULATION EXT AMF CAF NHF  
 Sire: **SOUTHLAND MATRIX 24K (1003726)**  
 SOUTHLAND ANNE 79H

LAMBS OVERDRIVE 45E  
 Dam: **SOUTHLAND MISS TIP 112M (1105339)**  
 RONAN R ROSEBUD 7J

Exposed to BAN Exchanger 23Y  
 May 2 – July 30.  
 Due to calve early March.

EMULATION N BAR 5522  
 N BAR PRIMROSE 2424  
 OMEGA FONZ 4F  
 CRESCENT CREEK DUCHESS 4B  
 WIWA CREEK OVERDRIVE 5'88  
 DOUBLE J BARBARA 465X  
 ANGUS ACRES TEX 16S  
 RONAN R ROSEBUD 27Y

DPR	BW	WW	YW	MILK	TM
	+2.6	+24	+34	+7	



**Southland Route 66 66X**  
 Son of Lot 9 - purchased by Lyle Stork

**9A****SOUTHLAND MISS TIP 124Z**

March 22 2012      CADS 124Z      CAA #1667174  
 BW: 85lbs.      WW: 747 lbs      HEIFER CALF

BC 7022 RAVEN 7965  
 Sire: **LIMESTONE BLU RAY W661**  
 C&H EVER ENTENSE 4036

DPR	BW	WW	YW	MILK	TM
	+3.1	+34	+54	+14	

**10****SOUTHLAND ERICA 94P**

February 10 2004      CADS 94P      CAA #1240680  
 BW: 79lbs.      WW: 646 lbs.      COW

N BAR EMULATION EXT AMF CAF NHF  
 Sire: **SOUTHLAND MATRIX 24K (1003726)**  
 SOUTHLAND ANNE 79H

PEAK DOT RANSOM 158H  
 Dam: **SOUTHLAND ERICA 68M (1105415)**  
 SOUTHLAND ERICA 75K

Al bred to Southland Trademark 54Y May 13.  
 Exposed to TW Upward 35X  
 June 5 – August 30.  
 Due to calve in early March.

EMULATION N BAR 5522  
 N BAR PRIMROSE 2424  
 OMEGA FONZ 4F  
 CRESCENT CREEK DUCHESS 4B  
 PEAK DOT GENERAL STONE 13F  
 PR NEONIA 21C  
 LAMBS OVERDRIVE 45E  
 GNS ERICA LASS 34Z

DPR	BW	WW	YW	MILK	TM
	+1.1	+27	+49	+8	



**Southland Erica 94P**  
 Lot 10

**10A****SOUTHLAND ERICA 12Z**

February 07 2012      CADS 12Z      CAA #1663055  
 BW: 84lbs      WW: 663 lbs      HEIFER CALF

SOUTHLAND TWO FITTY 250T  
 Sire: **SOUTHLAND THRILLER 83X (1577848)**  
 SOUTHLAND BELLE 89R

DPR	BW	WW	YW	MILK	TM
	+2.3	+41	+67	+16	



**11**

**SOUTHLAND DANA 119P**

February 18 2004      CADS 119P      CAA #1240686  
 BW: 80lbs.      WW: 639 lbs.      COW

N BAR EMULATION EXT AMF CAF NHF  
 Sire: **SOUTHLAND MATRIX 24K (1003726)**  
 SOUTHLAND ANNE 79H

LAMBS OVERDRIVE 45E  
 Dam: **SOUTHLAND DANA 127M (1105309)**  
 LAKESHORE 106B DANA 31'97

AI bred to Southland Thriller 83X May 12.  
 Exposed to TW Upward 35X  
 June 5– August 30.  
 Pregnancy tested possible to the AI.

EMULATION N BAR 5522  
 N BAR PRIMROSE 2424  
 OMEGA FONZ 4F  
 CRESCENT CREEK DUCHESS 4B  
 WIWA CREEK OVERDRIVE 5'88  
 DOUBLE J BARBARA 465X  
 RED NORTHLINE TORO 106B  
 MYALTA MISS WISEGUY 20C

E	BW	WW	YW	MILK	TM
P	+2.3	+26	+40	+8	

- Certainly one of my favorite cows in the entire offering. She has pedigree, phenotype, and production. She has two sons working in purebred operations. If I could have a poster girl for the type of cow we strive to raise at Southland, it is 119P.
- She is big time donor potential!!

**11A SOUTHLAND DANA 4Z**

February 03 2012      CADS 4Z      CAA #1663048  
 BW: 74lbs.      WW: 660 lbs      HEIFER CALF

SOUTHLAND TWO FIFTY 250T  
 Sire: **SOUTHLAND THRILLER 83X (1577848)**  
 SOUTHLAND BELLE 89R

E	BW	WW	YW	MILK	TM
P	+0.8	+36	+63	+16	



**Lot 11A**  
**Southland Dana 4Z**



**Southland Style 27Y**  
 Son of Lot 11  
 Purchased by  
 Buchko Angus



**Southland Tommy Lee 133X**  
 Son of Lot 11 - Purchased by Hird Angus

**12****RED SOUTHLAND ANDREA 164P**

March 15 2004      CADS 164P      CAA #1234062  
 BW: 91lbs.      WW: 794 lbs      COW

RED LMAN KING ROB 8621 OSF MAF  
 Sire: **RED HCF RED ROCK 212 (1142980)**  
 RED BJR MS STONY 4X-516 OSF

RED PO RAM 8F  
 Dam: **RED LITTLE DE ANDREA 171H (929111)**  
 RED LITTLE DE ANDREA 603C

Exposed to TW Upward 35X  
 May 15 – August 30.  
 Due to calve in mid-March.

RED LEACHMAN ROBUST 7222  
 RED LEACHMAN ELEANOR  
 RED BJR MONU 4X-303 OSF MAF  
 RED BJR MS STONY 1193-3124  
 RED BJR RAM 5214 OSF MAF  
 RED VALLEYHILLS ROSE 24B  
 RED MAYBRIDGE BANDIT 8A  
 RED BAR-V 64Y ANDREA 164A

DPR	BW	WW	YW	MILK	TM
	+1.5	+58	+94	+9	

**12A****SOUTHLAND ANDREA 7Z**

February 05 2012      CADS 7Z      CAA #1663051  
 BW: 84lbs.      WW: 753 lbs      HEIFER CALF

SITZ UPWARD 307R  
 Sire: **TW UPWARD 35X**  
 MAR BLACKCAP 5073

DPR	BW	WW	YW	MILK	TM
	+0.9	+65	+113	+23	

**13****SOUTHLAND TIME OUT 168P**

March 16 2004      CADS 168P      CAA #1288331  
 BW: 84 lbs.

LAMBS OVERDRIVE 45E  
 Sire: **SOUTHLAND OVERDRIVE 131K (1003699)**  
 NETHERLEA RUTH 7B

GILLIS PINE DRIVE 6B  
 Dam: **LAKESHORE 6B COREEN 53'00**  
 ANGUS ACRES COREEN 59E

Exposed to TW Upward 35X  
 May 15 – August 30.  
 Due to calve the end of February.

WIWA CREEK OVERDRIVE 5'88  
 DOUBLE J BARBARA 465X  
 SWENCO DIRECT CURRENT  
 SWENCO RUTH 7W  
 JAY EN DEE PINE DRIVE 22'86  
 ROSS RIVER ALTA 6Y  
 ANGUS ACRES TOM BOY 196Z  
 ROYAL COREEN ANGUS ACRES 59S

DPR	BW	WW	YW	MILK	TM
	+3.1	+24	+35	+9	

**13A****SOUTHLAND COREEN 28Z**

February 12 2012      CADS 28Z      CAA #1663070  
 BW: 85lbs.      WW: 653 lbs      HEIFER CALF

SOUTHLAND FREE RIDE 68R  
 Sire: **SOUTHLAND FREE STYLE 163U**  
 SOUTHLAND ON TIME 21M

DPR	BW	WW	YW	MILK	TM
	+4.4	+38	+62	+14	

**14****J D TIBBIE 3R**

January 03 2005      ESG 3R      CAA #1248882  
 BW: 74lbs.      WW: 667 lbs.      COW

CONNELLY FOREFRONT AMF CAF NHF  
 Sire: **TC FREEDOM 104 AMF CAF NHF (1169224)**  
 T C RUBY 9095 CAF

CHAMPION HILL GENERAL STONE  
 Dam: **JD TIBBIE 1'97 (893913)**  
 GREENBUSH TIBBIE 12E

Exposed to TW Upward 35X  
 May 5 – August 30.  
 Due to calve in mid-March.

CONNELLY FRONTLINE AMF CAF NHF  
 EILEEN HEARTLAND CONANGA6443  
 TC STOCKMAN 365  
 TC RUBY 4068  
 CENTURY TOUCHSTONE 131  
 R&J LADY 1427  
 EARLY SUNSET EXTRA 56B  
 MVHF TIBBIE 37Z

DPR	BW	WW	YW	MILK	TM
	+3.8	+39	+71	+15	

**14A****SOUTHLAND ANDREA 7Z**

February 05 2012      CADS 7Z      CAA #1663051  
 BW: 84lbs.      WW: 615 lbs      HEIFER CALF

SITZ UPWARD 307R  
 Sire: **TW UPWARD 35X (1606227)**  
 MAR BLACKCAP 5073

DPR	BW	WW	YW	MILK	TM
	+0.9	+65	+113	+23	

**12B****SOUTHLAND ANDREA 106Y**

March 16 2011      CADS 106Y      CAA #1631516  
 BW: 86lbs.      WW: 533 lbs.      BRED HEIFER

HF KODIAK 5R AMF CAF NHF MAF  
 Sire: **HF XTREME 117U (1469320)**  
 HFDF ECHO 13N

RED HCF RED ROCK 212  
 Dam: **RED SOUTHLAND ANDREA 164P (1234062)**  
 RED LITTLE DE ANDREA 171H

AI bred to BAN Masterpiece 9X May 6.  
 Exposed to Limestone Blu Ray W661  
 May 25 – August 15.  
 Safe to the AI.

SANDY BAR ADVANTAGE 43M  
 WILBAR RUBY 955N  
 RIVERBEND POWERLINE 0050  
 HF ECHO 83J  
 RED LMAN KING ROB 8621 OSF MAF  
 RED BJR MS STONY 4X-516 OSF  
 RED PO RAM 8F  
 RED LITTLE DE ANDREA 603C

EPR	BW	WW	YW	MILK	TM
	-0.2	51	84	18	



**Southland Brooklyn 64X**  
 Son of Lot 13  
 Purchased by Nightshade Angus



**Southland Style 16Y**  
 Son of Lot 13  
 Purchased by  
 T – T Ranch, Bill Armstrong

**14B****SOUTHLAND TIBBIE 300X**

October 28 2010      CADS 300X      CAA #1653264  
 BW: 76lbs.      BRED HEIFER

HF KODIAK 5R AMF CAF NHF MAF  
 Sire: **HF XTREME 117U (1469320)**  
 HFDF ECHO 13N

TC FREEDOM 104 AMF CAF NHF  
 Dam: **J D TIBBIE 3R (1248882)**  
 JD TIBBIE 1'97

Exposed to Limestone Blu Ray W661  
 May 15 – August 15.  
 Due to calve the end of February or early  
 March.

SANDY BAR ADVANTAGE 43M  
 WILBAR RUBY 955N  
 RIVERBEND POWERLINE 0050  
 HF ECHO 83J  
 CONNELLY FOREFRONT AMF CAF NHF  
 T C RUBY 9095 CAF  
 CHAMPION HILL GENERAL STONE  
 GREENBUSH TIBBIE 12E

EPR	BW	WW	YW	MILK	TM
	+3	+47	+80	+18	

**15****BLACKBIRD OF TULLAMORE 14R**

January 10 2005      GWJ 14R      CAA #1302167  
 BW: 83lbs.      WW: 475 lbs.      COW

CONNEALY FRONTLINE AMF CAF NHF  
 Sire: **SV F COSMO 69L (1183551)**  
 S V F FOREVER LADY 200D

WHITE LAKE STARWALKER 8H  
 Dam: **BLACKBIRD OF TULLAMORE 60L**  
 BLACKBIRD OF TULLAMORE 43J

Exposed to TW Upward 35X  
 May 15 - August 30.  
 Due to calve the end of February.

CONNEALY DATELINE  
 PLEASANT PILL OF CONANGA CAF  
 G D A R EXECUTIVE 727 AMF NHF  
 FOREVER LADY 163 G D A R  
 A J NORTH STAR  
 WHITE LAKE BLACKCAP 51A  
 N BAR EMULATION EXT AMF CAF NHF  
 SAN 2000 BLACKBIRD 219F

DPR	BW	WW	YW	MILK	TM
	+4.1	+41	+77	+16	



Southland Free Ride 207X - Son of Lot 15  
 Purchased by Glendale Ranch Ltd.

**15A****SOUTHLAND BLACKBIRD 18Z**

February 08 2012      CADS 18Z      CAA #1663061  
 BW: 92lbs.      WW: 754 lbs      HEIFER CALF

SOUTHLAND FREE RIDE 68R  
 Sire: **SOUTHLAND FREE STYLE 163U**  
 SOUTHLAND ON TIME 21M

DPR	BW	WW	YW	MILK	TM
	+5.9	+49	+83	+17	

**16****SOUTHLAND MISS TIP 27R**

January 13 2005      CADS 27R      CAA #1289699  
 BW: 90lbs.      WW: 669 lbs.      COW

VERMILION DATELINE 7078 AMF CAF NHF  
 Sire: **VAR DATELINE 2674 (1266161)**  
 VAR MORIAH 6606

LAMBS OVERDRIVE 45E  
 Dam: **SOUTHLAND MISS TIP 112M (1105339)**  
 RONAN R ROSEBUD 7J

Exposed to TW Upward 35X  
 May 5 - August 30.  
 Due to calve in early April.

CONNEALY DATELINE  
 VERMILION BLACKBIRD 5044  
 WK REAL TIME  
 V A R MIRA 475  
 WIWA CREEK OVERDRIVE 5'88  
 DOUBLE J BARBARA 465X  
 ANGUS ACRES TEX 16S  
 RONAN R ROSEBUD 27Y

DPR	BW	WW	YW	MILK	TM
	+6.7	+42	+77	+14	



Lot 15A  
 Southland Blackbird 18Z

**16A****SOUTHLAND MISS TIP 158Z**

April 20 2012      CADS 158Z      CAA #1698727  
 BW: 86lbs.      WW 756 lbs      HEIFER CALF

WK REWARD  
 Sire: **VAR REWARD 9360**  
 VAR RITO SOPHIE 3835

DPR	BW	WW	YW	MILK	TM
	+4.9	+53	+94	+15	

**17****SOUTHLAND DANA 102S**

January 29 2006      CADS 102S      CAA #1336060  
 BW: 76lbs.      WW: 605 lbs.      COW

HIGH VALLEY 4C6 AMBUSH AMF CAF  
 Sire: **DMM AMBUSH 22M (1134411)**  
 DMM MISS ESSENCE 108J

LAMBS OVERDRIVE 45E  
 Dam: **SOUTHLAND DANA 127M (1105309)**  
 LAKESHORE 106B DANA 31'97

Exposed to TW Upward 35X  
 May 15 - August 30.  
 Due to calve the end of February.

PARAMONT AMBUSH 2172 AMF CAF NHF  
 HIGH VALLEY GLORIA 1Q2  
 TC STOCKMAN 365  
 DMM MISS ESSENCE 22B  
 WIWA CREEK OVERDRIVE 5'88  
 DOUBLE J BARBARA 465X  
 RED NORTHLINE TORO 106B  
 MYALTA MISS WISEGUY 20C

DPR	BW	WW	YW	MILK	TM
	+2.3	+26	+38	+8	

**17B****SOUTHLAND DANA 75Y**

February 28 2011      CADS 75Y      CAA #1631494  
 BW: 81lbs.      WW: 590 lbs.      BRED HEIFER

SOUTHLAND FREE RIDE 68R  
 Sire: **SOUTHLAND FRINGE 210U (1450907)**  
 POPLAR MDWS LADY HEATHER 3N

DMM AMBUSH 22M  
 Dam: **SOUTHLAND DANA 102S (1336060)**  
 SOUTHLAND DANA 127M

TC FREEDOM 104 AMF CAF NHF  
 SOUTHLAND ERROLINE 44L  
 LEADTIME OF ALCAN 150  
 POPLAR MDWS LADY HEATHER 16K  
 HIGH VALLEY 4C6 AMBUSH AMF CAF  
 DMM MISS ESSENCE 108J  
 LAMBS OVERDRIVE 45E  
 LAKESHORE 106B DANA 31'97

AI bred to Limestone Blu Ray W661 May 25.  
 Exposed to Limestone Blu Ray W661  
 June 5 - August 15.  
 Safe to the AI.

E P D	BW	WW	YW	MILK	TM
	+3.3	+41	+73	+17	

**17A****SOUTHLAND DANA 91Z**

March 04 2012      CADS 91Z      CAA #1699858  
 BW: 81lbs.      WW: 786 lbs      HEIFER CALF

BC 7022 RAVEN 7965  
 Sire: **LIMESTONE BLU RAY W661**  
 C&H EVER ENTENSE 4036

DPR	BW	WW	YW	MILK	TM
	+2.5	+34	+56	+14	



**18**

**SOUTHLAND HOTTIE 57R**

January 18 2005      CADS 57R      CAA #1272818  
 BW: 88lbs.      WW: 679 lbs.

GDAR SVF RUSS 184B  
 Sire: **ROTH REGULATOR 0405 CAF (1142436)**  
 BEAR MTN LADY ERALINE 302  
 KBJ CONQUOR ALL 447J  
 Dam: **SOUTHLAND HOTTIE 12M ET (1129382)**  
 CRESCENT CREEK DUCHESS 4B

G D A R EXECUTIVE 727 AMF NHF  
 G D A R FOREVER LADY 719  
 ONEILLS DUKE  
 ONEILLS ERALINE 100  
 CRESCENT CREEK MAXIMUM 37C  
 LLB KINOCOTRY BEAUTY 403E  
 RIVERSTOWN 2100 6Z  
 DUCHESS JLB 53 '83

AI bred to Southland Thriller 83X May 3.  
 Exposed to TW Upward 35X  
 May 25 – August 30.  
 Safe to the AI.

EBF	BW	WW	YW	MILK	TM
	+6.5	+46	+76	+12	

- All of her calves have been in the show pen, until we stopped showing in 2011. She has produced many high selling bulls for us, and will continue to do so for her new owner.
- Her 2012 calf, Lot 18A, is no exception. She is proof of 57R's production ability, and is one of the best heifers to come out of the Southland program.



**Southland Style 39Y – Son of Lot 18  
 Purchased by Jim Wright**

**18A SOUTHLAND HOTTIE 6Z**

February 04 2012      CADS 6Z      CAA #1663050  
 BW: 86lbs.      WW: 756 lbs      HEIFER CALF

TC FREEDOM 104 AMF CAF NHF  
 Sire: **SOUTHLAND TWO FITTY 250T**  
 SOUTHLAND LADY 201M

EBF	BW	WW	YW	MILK	TM
	+5.2	+45	+73	+18	



**Lot 15A  
 SOUTHLAND HOTTIE 6Z**



Lot 19 Show Picture  
Lloydminster Champion

**19**

**SOUTHLAND TWIST OF FATE 97S**

January 26 2006      CADS 97S      CAA #1336054  
 BW: 72lbs.      WW: 734 lbs.      COW

CONNEALY FOREFRONT AMF CAF NHF  
 Sire: **TC FREEDOM 104 AMF CAF NHF (1169224)**  
 T C RUBY 9095 CAF  
 DMM TRACTION 109J  
 Dam: **SOUTHLAND ANNE 16P (1232992)**  
 SOUTHLAND ANNE 79H

CONNEALY FRONTLINE AMF CAF NHF  
 EILEEN HEARTLAND CONANGA6443  
 TC STOCKMAN 365  
 TC RUBY 4068  
 TC STOCKMAN 365  
 DMM MISS ESSENCE 22B  
 OMEGA FONZ 4F  
 CRESCENT CREEK DUCHESS 4B

AI bred to TW Upward 35X May 23.  
 Exposed to TW Upward 35X  
 June 5 – August 30.  
 Due to calve the end of March or early April.

CVR	BW	WW	YW	MILK	TM
	+1.7	+43	+66	+29	

- Donor potential. A great cow that has done some winning, and in the right hands could easily do some more.
- This very docile cow stood 2nd in class at the World Angus Forum to the Champion Female. At that time, her calf was Lot 93. As you can see production is a priority at Southland.



Lot 19A  
Southland Twist of Fate 32Z

**19A**

**SOUTHLAND TWIST OF FATE 32Z**

February 14 2012      CADS 32Z      CAA #1663073  
 BW: 83lbs.      WW: 612 lbs      HEIFER CALF

SOUTHLAND TWO FIFTY 250T  
 Sire: **SOUTHLAND THRILLER 83X (1577848)**  
 SOUTHLAND BELLE 89R

CVR	BW	WW	YW	MILK	TM
	+2.6	+49	+76	+26	

**19B**

**SOUTHLAND FATE 302X**

October 25 2010      CADS 302X      CAA #1653263  
 BW: 79lbs.      BRED HEIER

HF KODIAK 5R AMF CAF NHF MAF  
 Sire: **HF XTREME 117U (1469320)**  
 HFDF ECHO 13N

SANDY BAR ADVANTAGE 43M  
 WILBAR RUBY 955N  
 RIVERBEND POWERLINE 0050  
 HF ECHO 83J  
 CONNEALY FOREFRONT AMF CAF NHF  
 T C RUBY 9095 CAF  
 DMM TRACTION 109J  
 SOUTHLAND ANNE 79H

TC FREEDOM 104 AMF CAF NHF  
 Dam: **SOUTHLAND TWIST OF FATE 97S**  
 SOUTHLAND ANNE 16P

AI bred to BPF Special Focus 504 May 16.  
 Exposed to Limestone Blu Ray W661  
 June 5 – August 15. Safe to the AI.

CVR	BW	WW	YW	MILK	TM
	+2	+49	+77	+25	



Lot 18B  
Southland Fate 302X



**20****SOUTHLAND DUCHESS 132S**

February 02 2006      CADS 132S      CAA #1336211  
 BW: 78lbs.      WW: 613 lbs.      COW

ROTH REGULATOR 0405 CAF  
 Sire: **NORTHLINE LANDSLIDE 787N (1180772)**  
 DREAM MAKERS JESTRESS 787G

LAMBS OVERDRIVE 45E  
 Dam: **SOUTHLAND DUCHESS 41L (1060770)**  
 OMEGA FRENCH DUCHESS

AI bred to Southland Thriller 83X May 16.  
 Exposed to TW Upward 35X  
 June 5 – August 30.  
 Favorable to the AI.

GDAR SVF RUSS 184B  
 BEAR MTN LADY ERALINE 302  
 MINBURN FREE LANCER 79D  
 KBJ JESTRESS 224D  
 WIWA CREEK OVERDRIVE 5'88  
 DOUBLE J BARBARA 465X  
 OMEGA BASIN  
 OMEGA DUCHESS

DPR	BW	WW	YW	MILK	TM
	+3.1	+23	+44	+6	



**Werner Street Sense 247**  
 Sire of Lot 20B

**20A****SOUTHLAND DUCHESS 44Z**

February 18 2012      CADS 44Z      CAA #1663081  
 BW: 84lbs.      WW: 746 lbs      HEIFER CALF

SITZ UPWARD 307  
 Sire: **TW UPWARD 35X**  
 MAR BLACKCAP 5073

DPR	BW	WW	YW	MILK	TM
	+3.5	+45	+84	+18	

**20B****SOUTHLAND DUCHESS 100Y**

March 10 2011      CADS 100Y      CAA #1631512  
 BW: 91lbs.      WW: 577 lbs.

SCHURRTOP MC 2500 AMF CAF  
 Sire: **WERNER STREET SENSE 247 (1442533)**  
 WERNER FALCON JILT 356R

NORTHLINE LANDSLIDE 787N  
 Dam: **SOUTHLAND DUCHESS 132S (1336211)**  
 SOUTHLAND DUCHESS 41L

Exposed to Limestone Blu Ray W661  
 May 15 – August 15.  
 Due to calve the end of February.

SCHURRTOP M C  
 SCHURRTOP R S 1413 2153  
 BR MIDLAND AMF CAF NHF  
 SUMMITCREST JILT 080J  
 ROTH REGULATOR 0405 CAF  
 DREAM MAKERS JESTRESS 787G  
 LAMBS OVERDRIVE 45E  
 OMEGA FRENCH DUCHESS

DPR	BW	WW	YW	MILK	TM
	+5.5	+37	+60	+11	



**Lot 20B**  
 Southland Duchess 100Y

**21****SOUTHLAND BONNY 220S**

February 21 2006      CADS 220S      CAA #1346547  
 BW: 76lbs.      WW: 632 lbs.

HIGH VALLEY 4C6 AMBUSH AMF CAF  
 Sire: **DMM AMBUSH 22M (1134411)**  
 DMM MISS ESSENCE 108J

RONAN R BANDOLIERMERE 108H  
 Dam: **SOUTHLAND BONNY 73L (1060900)**  
 RONAN BONNY ALLEGRA 28J

AI bred to Southland Thriller 83X May 13.  
 Exposed to TW Upward 35X  
 June 5 – August 30.  
 Safe to the AI

PARAMONT AMBUSH 2172 AMF CAF NHF  
 HIGH VALLEY GLORIA 1Q2  
 TC STOCKMAN 365  
 DMM MISS ESSENCE 22B  
 KEWETIN BANDOLIERMERE 4A  
 BLACKTOF ERICA 84B  
 RONAN GIANT 16C  
 RONAN BONNY ALLEGRA 12F

DPR	BW	WW	YW	MILK	TM
	+0.8	+24	+40	+14	



**Southland Fringe 29Y**  
 Son of Lot 21 - Purchased by PFRA

**21A****SOUTHLAND BONNY 27Z**

February 11 2012      CADS 27Z      CAA #1663069  
 BW: 86lbs.      WW: 692 lbs      HEIFER CALF

SOUTHLAND FREE RIDE 68R  
 Sire: **SOUTHLAND FREE STYLE 163U**  
 SOUTHLAND ON TIME 21M

DPR	BW	WW	YW	MILK	TM
	+3.4	+38	+65	+16	



**22**

**SOUTHLAND ERICA 1T**

January 05 2007      CADS 1T      CAA #1384708  
 BW: 78lbs.      WW: 660 lbs.      COW

CONNEALY FOREFRONT AMF CAF NHF  
 Sire: **TC FREEDOM 104 AMF CAF NHF (1169224)**  
 T C RUBY 9095 CAF

CONNEALY FRONTLINE AMF CAF NHF  
 EILEEN HEARTLAND CONANGA6443  
 TC STOCKMAN 365  
 TC RUBY 4068  
 N BAR EMULATION EXT AMF CAF NHF  
 SOUTHLAND ANNE 79H  
 PEAK DOT RANSOM 158H  
 SOUTHLAND ERICA 75K

SOUTHLAND MATRIX 24K  
 Dam: **SOUTHLAND ERICA 94P (1240680)**  
 SOUTHLAND ERICA 68M

Exposed to TW Upward 35X  
 May 15 – August 30.  
 Due to calve the end of February.

	BW	WW	YW	MILK	TM
UP	+1.9	+39	+75	+16	

- Powerful production here.
- 1T is the dam of our 2011 Female Sale high selling heifer to Tullamore Angus. When everyone gets to see her model heifer calf on December 1, it will be apparent what caliber of cow 1T is!!



**Southland Erica 5Y**  
 Daughter of Erica 1T

**22A SOUTHLAND ERICA 1Z**

January 23 2012      CADS 1Z      CAA #1663046  
 BW: 66lbs.      WW: 767 lbs      HEIFER CALF

SITZ UPWARD 307R  
 Sire: **TW UPWARD 35X (1606227)**  
 MAR BLACKCAP 5073

	BW	WW	YW	MILK	TM
UP	-0.5	+46	+100	+23	



**Lot 22A**  
 Southland Erica 1Z



**23**

**SOUTHLAND  
ROSEBUD 81T**

January 23 2007      CADS 81T      CAA #1399877  
 BW: 90lbs.      WW: 710 lbs.      COW

CONNEALY FOREFRONT AMF CAF NHF  
 Sire: **TC FREEDOM 104 AMF CAF NHF (1169224)**  
 T C RUBY 9095 CAF

ANGUS ACRES BART 78D  
 Dam: **RONAN R ROSEBUD 5J (956082)**  
 RONAN R ROSEBUD 32Z

CONNEALY FRONTLINE AMF CAF NHF  
 EILEEN HEARTLAND CONANGA6443  
 TC STOCKMAN 365  
 TC RUBY 4068  
 LDR BARDOLINE 7Z  
 ANGUS ACRES PRINCESS 78X  
 RONAN ULTRA  
 RONAN R ROSEBUD 98S

AI bred to Southland Trademark 54Y May 8.  
 Exposed to TW Upward 35X  
 May 25 – August 30.  
 Pregnancy tested possible to the AI.

BPF	BW	WW	YW	MILK	TM
	+2.8	+44	+74	+18	



**Lot 23A  
SOUTHLAND ROSEBUD 9Z**



**23A**

**SOUTHLAND ROSEBUD 9Z**

February 06 2012      CADS 9Z      CAA #1663053  
 BW: 83lbs.      WW: 735 lbs      HEIFER CALF

SITZ UPWARD 307R  
 Sire: **TW UPWARD 35X (1606227)**  
 MAR BLACKCAP 5073

BPF	BW	WW	YW	MILK	TM
	+3.4	+56	+99	+24	

**23B**

**SOUTHLAND ROSEBUD 68Y**

February 25 2011      CADS 68Y      CAA #1631492  
 BW: 82lbs.      WW: 566 lbs.      BRED HEIFER

SCHURRTOP MC 2500 AMF CAF  
 Sire: **WERNER STREET SENSE 247 (1442533)**  
 WERNER FALCON JILT 356R

TC FREEDOM 104 AMF CAF NHF  
 Dam: **SOUTHLAND ROSEBUD 81T (1399877)**  
 RONAN R ROSEBUD 5J

SCHURRTOP M C  
 SCHURRTOP R S 1413 2153  
 BR MIDLAND AMF CAF NHF  
 SUMMITCREST JILT 080J  
 CONNEALY FOREFRONT AMF CAF NHF  
 T C RUBY 9095 CAF  
 ANGUS ACRES BART 78D  
 RONAN R ROSEBUD 32Z

AI bred to BPF Special Focus 504 May 13.  
 Exposed to Limestone Blu Ray W661  
 June 1 – August 30.  
 Safe to the AI.

BPF	BW	WW	YW	MILK	TM
	+4.5	+44	+72	+16	



**Lot 23B  
SOUTHLAND ROSEBUD 68Y**





# 24 SOUTHLAND JEWEL 275T

February 25 2007      CADS 275T      CAA #1400030  
 BW: 74lbs.      WW: 618 lbs      COW

SANDY BAR BRAVE HEART 86K  
 Sire: SOUTHLAND JIMMY RAY 170N (1179634)  
 SOUTHLAND DIXIE 14K

EXAR MASTER 253  
 Dam: JUSTAMERE 253 JEWEL 104R (1281520)  
 BRANDEIS JESTRESS 13K

AI bred to Southland Thriller 83X May 5.  
 Exposed to TW Upward 35X  
 May 25 – August 30.  
 Safe to the AI

CRESCENT CREEK BRAVE HEART 35F  
 SANDY BAR QUEENETTE 108E  
 G D A R TRAVELER 044 AMF CAF NHF  
 SOUTHLAND FRAN 43H  
 WK GUNSMOKE  
 B J BRIDE 909  
 CAJUN FORTUNE 11F  
 JESTRESS OF BROOKSIDE 2U

EPD	BW	WW	YW	MILK	TM
	+1.4	+36	+60	+13	



# Lot 24A SOUTHLAND JEWEL 79Z

# 24A SOUTHLAND JEWEL 79Z

February 27 2012      CADS 79Z      CAA #1663098  
 BW: 85lbs.      WW: 773 lbs      HEIFER CALF

SITZ UPWARD 307R  
 Sire: TW UPWARD 35X  
 MAR BLACKCAP 5073

EPD	BW	WW	YW	MILK	TM
	+3	+52	+92	+22	

# 25 SOUTHLAND LENA 17U

January 12 2008      CADS 17U      CAA #1470920  
 BW: 82lbs.      WW: 638 lbs.      COW

JUSTAMERE BLACK TIMBER 721P  
 Sire: SOUTHLAND FUEL 45S (1336012)  
 SOUTHLAND REVIBE 141M

RONAN BANDOLIER 107F  
 Dam: KZJ LENA 124J (967607)  
 RONAN R LENA 7G

AI bred to Southland Trademark 54Y May 4.  
 Exposed to TW Upward 35X  
 May 25 – August 30.  
 Safe to the AI.

EXAR BIG TIMBER 1118  
 JUSTAMERE 088 BLACKBIRD 558F  
 SANDY BAR BRAVE HEART 86K  
 BRIMAR REVA LASS 323J  
 CAMILLA BANDOLIER 84G  
 RONAN BIRDIE 27Y  
 RONAN ALBERTAN 92A  
 RONAN R LENA 7C

EPD	BW	WW	YW	MILK	TM
	+2.3	+21	+32	+13	

# 25A SOUTHLAND LENA 56Z

February 21 2012      CADS 56Z      CAA #1663083  
 BW: 78lbs.      WW: 678 lbs      HEIFER CALF

BC 7022 RAVEN 7965  
 Sire: LIMESTONE BLU RAY W661  
 C&H EVER ENTENSE 4036

EPD	BW	WW	YW	MILK	TM
	+1.7	+30	+53	+17	



Southland Lena 119X - Daughter of Lot 25  
 Purchased by Silver Sage Angus



**26**

**MISS BAN MAYFLOWER 5U**

January 01 2008      **BAN 5U**      CAA #1437989  
 BW: 73lbs.      WW: 695 lbs      COW

SANDY BAR ADVANTAGE 43M  
 Sire: **HF KODIAK 5R (1274305)**  
 WILBAR RUBY 955N

HF PROGRESS 20K  
 Dam: **HF MAYFLOWER 39S (1331747)**  
 HF MAYFLOWER 56P

AI bred to Southland Thriller 83X May 18.  
 Exposed to TW Upward 35X  
 June 5 – August 30.  
 Safe to the AI

TC ADVANTAGE AMF CAF NHF  
 SANDY BAR JEMINA 44K  
 VERMILION YELLOWSTONE AMF CAF NHF  
 WILBAR RUBY 161J  
 NORTHERN IMPROVEMENT 4480 GF  
 DURALTA 14C ECHO 32E  
 RIVERBEND POWERLINE 0050  
 HF MAYFLOWER 63J

EPD	BW	WW	YW	MILK	TM
	-0.7	+44	+75	+21	



**Lot 26A**  
**Southland Mayflower 5Z**

**26A** **SOUTHLAND MAYFLOWER 5Z**

February 03 2012      **CADS 5Z**      CAA #1663049  
 BW: 79lbs.      WW: 640 lbs      HEIFER CALF

SOUTHLAND TWO FIFTY 250T  
 Sire: **SOUTHLAND THRILLER 83X**  
 SOUTHLAND BELLE 89R

EPD	BW	WW	YW	MILK	TM
	+0.8	+49	+80	+22	



**Southland Mayflower 10Y - Daughter Lot 26**  
**Purchased by Walkerbrae Farms**



**SOUTHLAND ANGUS**



# 27 SOUTHLAND SHANIA 56U

January 20 2008 CADS 56U CAA #1421934  
 BW: 80lbs. WW: 686 lbs. COW

G A R GRID MAKER AMF CAF NHF  
 Sire: **TC GRID TOPPER 355**  
 TC PRIDE 8067

KJN FUSION 4P  
 Dam: **SOUTHLAND SHANIA 225S (1346551)**  
 SOUTHLAND SHANIA 132N

Exposed to BAN Exchanger 23Y  
 May 2 – July 30. Due to calve mid-February.

E	BW	WW	YW	MILK	TM
P	+4.7	+39	+79	+14	

- This cow is very cherished at Southland. As a heifer she lost an eye out in the pasture and has literally never looked back...at least on the left side!
- We never showed her due to this and she decided to prove to us she was a great one by becoming the near perfect Angus that she is. She was slated to be a donor at Southland, and hopefully someone else believes in her like we do.

# 28 WYNNBROOK ULAH 28U

January 21 2008 WYF 28U CAA #1476335  
 BW: 90lbs. COW

B/R NEW DESIGN 036 AMF CAF NHF  
 Sire: **B/R NEW FRONTIER 095**  
 WHITE FENCE PRIDE H1

G A R SLEEP EASY 1009 AMF CAF NHF  
 Dam: **WHITESTONE RITA J054 OF F281**  
 WHITESTONE F281 OF 5H27 0133

Exposed to TW Upward 35X  
 May 5 – August 30.  
 Due to calve mid-March

E	BW	WW	YW	MILK	TM
P	+3.7	+42	+80	+30	

# 28A SOUTHLAND ULAH 131Z

March 26 2012 CADS 131Z CAA #1667179  
 BW: 74lbs. WW: 731 lbs HEIFER CALF

BC 7022 RAVEN 7965  
 Sire: **LIMESTONE BLU RAY W661**  
 C&H EVER ENTENSE 4036

E	BW	WW	YW	MILK	TM
P	+0.9	+37	+77	+25	



# 27A SOUTHLAND SHANIA 110Z

March 16 2012 CADS 110Z CAA #1667163  
 BW: 79lbs. WW: 691 lbs HEIFER CALF

BC 7022 RAVEN 7965  
 Sire: **LIMESTONE BLU RAY W661**  
 C&H EVER ENTENSE 4036

E	BW	WW	YW	MILK	TM
P	+2.5	+38	+77	+17	

# 28B SOUTHLAND ULAH 21Y

February 11 2011 CADS 21Y CAA #1631543  
 BW: 86lbs. WW: 770 lbs. BRED HEIFER

NORTHLINE LANDSLIDE 787N  
 Sire: **SOUTHLAND DR FEELGOOD 194S**  
 SOUTHLAND ON TIME 21M

B/R NEW FRONTIER 095 AMF CAF NHF  
 Dam: **WYNNBROOK ULAH 28U (1476335)**  
 WHITESTONE RITA J054 OF F281

ROTH REGULATOR 0405 CAF  
 DREAM MAKERS JESTRESS 787G  
 KBJ CONQUOR ALL 447J  
 DOUBLE J LASS 452A  
 B/R NEW DESIGN 036 AMF CAF NHF  
 WHITE FENCE PRIDE H1  
 G A R SLEEP EASY 1009 AMF CAF NHF  
 WHITESTONE F281 OF 5H27 0133

AI bred to BPF Special Focus 504 May 21  
 Exposed to Limestone Blu Ray W661  
 June 10 – August 15.  
 Possible to the AI

E	BW	WW	YW	MILK	TM
P	+4.4	+51	+81	+19	

**29****SOUTHLAND DANA 103U**

January 27 2008      CADS 103U      CAA #1450740  
 BW: 80lbs.      WW: 618 lbs.      COW

TC FREEDOM 104 AMF CAF NHF  
 Sire: **SOUTHLAND FREE RIDE 68R** (1272820)  
 SOUTHLAND ERROLINE 44L

SOUTHLAND MATRIX 24K  
 Dam: **SOUTHLAND DANA 119P** (1240686)  
 SOUTHLAND DANA 127M

Al bred to TW Upward 35X May 21.  
 Exposed to TW Upward 35X  
 May 25 – August 30.  
 Safe to the AI

CONNEALY FOREFRONT AMF CAF NHF  
 T C RUBY 9095 CAF  
 SCA 03H OF IDEAL 1418  
 SCA ERROLINE 16H  
 N BAR EMULATION EXT AMF CAF NHF  
 SOUTHLAND ANNE 79H  
 LAMBS OVERDRIVE 45E  
 LAKESHORE 106B DANA 31'97

EPD	BW	WW	YW	MILK	TM
	+3.4	+39	+72	+19	



Lot 29A  
 Southland Dana 35Z

**29A****SOUTHLAND DANA 35Z**

February 14 2012      CADS 35Z      CAA #1663075  
 BW: 87lbs      WW: 731 lbs      HEIFER CALF

SITZ UPWARD 307R  
 Sire: **TW UPWARD 35X** (1606227)  
 MAR BLACKCAP 5073

EPD	BW	WW	YW	MILK	TM
	+4.3	+54	+98	+25	

**30****SOUTHLAND ERICA 118U**

January 30 2008      CADS 118U      CAA #1450747  
 BW: 83lbs.      WW: 671 lbs.      COW

TC FREEDOM 104 AMF CAF NHF  
 Sire: **SOUTHLAND FREE RIDE 68R** (1272820)  
 SOUTHLAND ERROLINE 44L

DMM AMBUSH 22M  
 Dam: **SOUTHLAND ERICA 137R** (1272488)  
 SOUTHLAND ERICA 80L

Al bred to Southland Thriller 83X May 14  
 Exposed to TW Upward 35X  
 June 5 – August 30.  
 Safe to the AI

CONNEALY FOREFRONT AMF CAF NHF  
 T C RUBY 9095 CAF  
 SCA 03H OF IDEAL 1418  
 SCA ERROLINE 16H  
 HIGH VALLEY 4C6 AMBUSH AMF CAF  
 DMM MISS ESSENCE 108J  
 LAMBS OVERDRIVE 45E  
 OMEGA LASS 59G

EPD	BW	WW	YW	MILK	TM
	+4.3	+47	+83	+17	



Southland Dana 134X - Daughter of Lot 29  
 Purchased by Symens Land & Cattle

**30A****SOUTHLAND ERICA 20Z**

February 09 2012      CADS 20Z      CAA #1663063  
 BW: 78lbs.      WW: 649 lbs      HEIFER CALF

SOUTHLAND TWO FIFTY 250T  
 Sire: **SOUTHLAND THRILLER 83X** (1577848)  
 SOUTHLAND BELLE 89R

EPD	BW	WW	YW	MILK	TM
	+2	+47	+84	+20	

**31****J D MADGE 16W**

January 13 2009      ESG 16W      CAA #1488127  
 BW: 89lbs.      COW

S A V 8180 TRAVELER 004  
 Sire: **ANKONIAN WERNER WILD FIRE 96**  
 FSR ELBA SPECIAL DESIGN S406

SCA TONTO 6A  
 Dam: **HAPPYVALE MADGE 97G** (905167)  
 HAPPYVALE MADGE 54D

Exposed to BAN Exchanger 23Y  
 May 2 – July 30.  
 Due to calve early February

SITZ TRAVELER 8180 AMF CAF NHF  
 BOYD FOREVER LADY 8003  
 W C C SPECIAL DESIGN L309 AMF CAF NHF  
 W C C ELBA M82  
 LEACHMAN TONTO AMF NHF  
 EARLY SUNSET JUNO 49S  
 BALDRIDGE ALFALFA 951  
 PENOSKY BAR MADGE 174

EPD	BW	WW	YW	MILK	TM
	+2.5	+39	+68	+19	

**31B****SOUTHLAND MADGE 17Y**

February 10 2011      CADS 17Y      CAA #1643887  
 BW: 84lbs.      BRED HEIFER

FIGURE 8 ANGUS TOM BOY 509R  
 Sire: **LLB CASINO 333W** (1520264)  
 LLB KINCHTRY BEAUTY 317L

ANKONIAN WERNER WILD FIRE 96  
 Dam: **J D MADGE 16W** (1488127)  
 HAPPYVALE MADGE 97G

ADELPHI TOM BOY 20H  
 FIGURE 8 ANGUS LADY 604J  
 KILMAURS DAQUANTAE 1H  
 DOUBLE J BEAUTY 403A  
 S A V 8180 TRAVELER 004 D  
 FSR ELBA SPECIAL DESIGN S406  
 SCA TONTO 6A  
 HAPPYVALE MADGE 54D

Al bred to BPF Special Focus 504 May 3  
 Exposed to Limestone Blu Ray W661  
 May 25 – August 15.  
 Safe to the AI

EPD	BW	WW	YW	MILK	TM
	+3.8	+30	+50	+15	

**31A****SOUTHLAND MADGE 82Z**

February 28 2012      CADS 82Z      CAA #1663100  
 BW: 92lbs.      WW: 722 lbs.      HEIFER CALF

WK REWARD  
 Sire: **VAR REWARD 9360**  
 VAR RITO SOPHIE 3835

EPD	BW	WW	YW	MILK	TM
	+5	+57	+90	+17	



**32**

**SOUTHLAND GEORGINA 247U**

February 21 2008      CADS 247U      CAA #1450919  
 BW: 88lbs.      WW: 729 lbs      COW

TC FREEDOM 104 AMF CAF NHF  
 Sire: **SOUTHLAND FREE RIDE 68R (1272820)**  
 SOUTHLAND ERROLINE 44L  
 SOUTHLAND MATRIX 24K  
 Dam: **SOUTHLAND GEORGINA 149P (1240696)**  
 SOUTHLAND GEORGINA 60M

CONNELLY FOREFRONT AMF CAF NHF  
 T C RUBY 9095 CAF  
 SCA 03H OF IDEAL 1418  
 SCA ERROLINE 16H  
 N BAR EMULATION EXT AMF CAF NHF  
 SOUTHLAND ANNE 79H  
 LAMBS OVERDRIVE 45E  
 STRETTON CREEK GEORGINA 2C

AI bred to Southland Thriller 83X May 18  
 Exposed to TW Upward 35X  
 June 5 – August 30.  
 Safe to the AI

DFP	BW	WW	YW	MILK	TM
	+4	+43	+77	+20	



**32A**

**SOUTHLAND GEORGINA 14Z**

February 08 2012      CADS 14Z      CAA #1663057  
 BW: 79lbs.      WW: 761 lbs      HEIFER CALF

SOUTHLAND TWO FIFTY 250T  
 Sire: **SOUTHLAND THRILLER 83X (1577848)**  
 SOUTHLAND BELLE 89R

DFP	BW	WW	YW	MILK	TM
	+2.1	+46	+81	+22	

Lot 32A  
**SOUTHLAND GEORGINA 14Z**

**32B**

**SOUTHLAND GEORGINA 44Y**

February 19 2011      CADS 44Y      CAA #1631475  
 BW: 85lbs.      WW: 624 lbs.      BRED HEIFER

NORTHLINE LANDSLIDE 787N  
 Sire: **SOUTHLAND DR FEELGOOD 194S**  
 SOUTHLAND ON TIME 21M  
 SOUTHLAND FREE RIDE 68R  
 Dam: **SOUTHLAND GEORGINA 247U (1450919)**  
 SOUTHLAND GEORGINA 149P

ROTH REGULATOR 0405 CAF  
 DREAM MAKERS JESTRESS 787G  
 KBJ CONQOUR ALL 447J  
 DOUBLE J LASS 452A  
 TC FREEDOM 104 AMF CAF NHF  
 SOUTHLAND ERROLINE 44L  
 SOUTHLAND MATRIX 24K  
 SOUTHLAND GEORGINA 60M

Exposed to Limestone Blu Ray W661  
 May 5 – August 15.  
 Due to calve mid-February.

DFP	BW	WW	YW	MILK	TM
	+4.7	+51	+79	+14	



Lot 32B  
**Southland Georgina 44Y**



**33****SOUTHLAND ROSEBUD 47W**

January 23 2009      CADS 47W      CAA #1595376  
 BW: 80lbs.      WW: 636 lbs.      COW

TC FREEDOM 104 AMF CAF NHF  
 Sire: **SOUTHLAND TWO FITTY 250T (1395273)**  
 SOUTHLAND LADY 201M

ANGUS ACRES BART 78D  
 Dam: **RONAN R ROSEBUD 5J (956082)**  
 RONAN R ROSEBUD 32Z

CONNEALY FOREFRONT AMF CAF NHF  
 T C RUBY 9095 CAF  
 PEAK DOT PANAMA 58G  
 CEDAR CREEK LADY 41G  
 LDR BARDOLENE 7Z  
 ANGUS ACRES PRINCESS 78X  
 RONAN ULTRA  
 RONAN R ROSEBUD 98S

D	BW	WW	YW	MILK	TM
	+1.8	+36	+58	+13	

AI bred to TW Upward 35X May 20  
 Exposed to TW Upward 35X  
 June 5 - August 30.  
 Possible to the AI

**33A****SOUTHLAND ROSEBUD 99Z**

March 09 2012      CADS 99Z      CAA #1699861  
 BW: 80lbs.      WW: 710 lbs      HEIFER CALF

WK REWARD  
 Sire: **VAR REWARD 9360**  
 VAR RITO SOPHIE 3835

D	BW	WW	YW	MILK	TM
	+2.7	+51	+85	+14	

**34****SOUTHLAND BONNY 117W**

February 04 2009      CADS 117W      CAA #1595380  
 BW: 81lbs.      WW: 635 lbs.      COW

TC FREEDOM 104 AMF CAF NHF  
 Sire: **SOUTHLAND TWO FITTY 250T (1395273)**  
 SOUTHLAND LADY 201M

DMM FLEX 6L  
 Dam: **SOUTHLAND BONNY 24P (1232997)**  
 RONAN BONNY ALLEGRA 28J

CONNEALY FOREFRONT AMF CAF NHF  
 T C RUBY 9095 CAF  
 PEAK DOT PANAMA 58G  
 CEDAR CREEK LADY 41G  
 DMM FLEX 24E  
 DMM MISS ESSENCE 126H  
 RONAN GIANT 16C  
 RONAN BONNY ALLEGRA 12F

E	BW	WW	YW	MILK	TM
P	+3.4	+32	+57	+18	

Exposed to TW Upward 35X  
 May 15 - August 30  
 Due to calve in early May

**34A****SOUTHLAND BONNY 68Z**

February 24 2012      CADS 68Z      CAA #1663091  
 BW: 80lbs.      WW: 673 lbs      HEIFER CALF

WK REWARD  
 Sire: **VAR REWARD 9360**  
 VAR RITO SOPHIE 3835

E	BW	WW	YW	MILK	TM
P	+3.4	+49	+84	+17	

**35****SOUTHLAND ROSEBUD 165W**

February 13 2009      CADS 165W      CAA #1595383  
 BW: 67lbs.      WW: 730 lbs.      COW

EXAR SUDDEN IMPACT 1537 AMF CAF NHF  
 Sire: **MF DESTROYER 093 AMF CAF (1362129)**  
 M F CHERRY 115

TC FREEDOM 104 AMF CAF NHF  
 Dam: **SOUTHLAND ROSEBUD 81T (1399877)**  
 RONAN R ROSEBUD 5J

NORTHERN IMPROVEMENT 4480  
 B L R BLUSHING PRIDE 9097  
 STEVENSON ROYCE 741C CAF NHF  
 M F CHERRY 597  
 CONNEALY FOREFRONT AMF CAF NHF  
 T C RUBY 9095 CAF  
 ANGUS ACRES BART 78D  
 RONAN R ROSEBUD 32Z

D	BW	WW	YW	MILK	TM
	+2.7	+54	+91	+34	

AI bred to Southland Thriller 83X May 18  
 Exposed to TW Upward 35X  
 June 5 - August 30  
 Safe to the AI

**36****SOUTHLAND ERROLINE 173W**

February 13 2009      CADS 173W      CAA #1595384  
 BW: 76lbs.      WW: 649 lbs.      COW

SCHURRTOP MC 2500 AMF CAF  
 Sire: **WERNER STREET SENSE 247 (1442533)**  
 WERNER FALCON JILT 356R

SOUTHLAND MATRIX 24K  
 Dam: **SOUTHLAND ERROLINE 156P (1232904)**  
 SOUTHLAND ERROLINE 18M

SCHURRTOP M C  
 SCHURRTOP R S 1413 2153  
 BR MIDLAND AMF CAF NHF  
 SUMMITCREST JILT 080J  
 N BAR EMULATION EXT AMF CAF NHF  
 SOUTHLAND ANNE 79H  
 LAMBS OVERDRIVE 45E  
 SCA ERROLINE 30D

E	BW	WW	YW	MILK	TM
P	+2	+36	+54	+13	

Exposed to TW Upward 35X  
 May 15 - August 30  
 Due to calve in early March

**35A****SOUTHLAND ROSEBUD 39Z**

February 15 2012      CADS 39Z      CAA #1663077  
 BW: 85lbs.      WW: 740 lbs      HEIFER CALF

WK REWARD  
 Sire: **VAR REWARD 9360**  
 VAR RITO SOPHIE 3835

D	BW	WW	YW	MILK	TM
	+3.8	+61	+101	+25	

**36A****SOUTHLAND ERROLINE 77Z**

February 27 2012      CADS 77Z      CAA #1663097  
 BW: 84lbs.      WW: 680 lbs      HEIFER CALF

WK REWARD  
 Sire: **VAR REWARD 9360**  
 VAR RITO SOPHIE 3835

E	BW	WW	YW	MILK	TM
P	+3.6	+53	+83	+14	

**35B****SOUTHLAND ROSEBUD 2Y**

February 03 2011      CADS 2Y      CAA #1631531  
 BW: 79lbs.      WW: 746 lbs.      BRED HEIFER

BC 7022 RAVEN 7965  
 Sire: **LIMESTONE BLU RAY W661 (1591075)**  
 C&H EVER ENTENSE 4036

MF DESTROYER 093 AMF CAF  
 Dam: **SOUTHLAND ROSEBUD 165W (1595383)**  
 SOUTHLAND ROSEBUD 81T

B C MARATHON 7022 AMF CAF NHF  
 O C C BLACKBIRD 796F  
 BR MIDLAND AMF CAF NHF  
 SHADYBROOK EVER ENTENSE 491G  
 EXAR SUDDEN IMPACT 1537 AMF CAF NHF  
 M F CHERRY 115  
 TC FREEDOM 104 AMF CAF NHF  
 RONAN R ROSEBUD 5J

D	BW	WW	YW	MILK	TM
	+2.7	+56	+93	+27	

AI bred to BPF Special Focus 504 May 21  
 Exposed to BCAR Preference 122Y  
 June 5 - July 30.  
 Favorable to the AI



Lot 35B  
 Southland Rosebud 2Y



**37****SOUTHLAND MONICA 238W**

March 09 2009      CADS 238W      CAA #1595388  
 BW: 80lbs.      WW: 595 lbs.      COW

TC FREEDOM 104 AMF CAF NHF  
 Sire: **SOUTHLAND FREE RIDE 68R (1272820)**  
 SOUTHLAND ERROLINE 44L

SOUTHLAND MATRIX 24K  
 Dam: **SOUTHLAND MONICA 160P (1240681)**  
 SOUTHLAND MONICA 129M

Exposed to TW Upward 35X  
 May 5 – August 30.  
 Due to calve in early March

CONNEALY FOREFRONT AMF CAF NHF  
 T C RUBY 9095 CAF  
 SCA 03H OF IDEAL 1418  
 SCA ERROLLINE 16H  
 N BAR EMULATION EXT AMF CAF NHF  
 SOUTHLAND ANNE 79H  
 SANDY BAR BRAVE HEART 86K  
 SOUTHLAND MONICA 140K

DPR	BW	WW	YW	MILK	TM
	+2.7	+42	+76	+20	



Sire of Lot 38  
**SAV Pioneer**

**37A****SOUTHLAND MONICA 166Z**

April 27 2012      CADS 166Z      CAA #1698729  
 BW: 81lbs.      WW: 762 lbs      HEIFER CALF

FIGURE 8 ANGUS TOM BOY 509R  
 Sire: **LLB CASINO 333W (1520264)**  
 LLB KINCHTRY BEAUTY 317L

DPR	BW	WW	YW	MILK	TM
	+3.4	+30	+52	+15	

**38****PFLC MISS SUNSHINE 6X**

January 01 2010      PFLC 6X      CAA #1543461  
 BW: 70lbs.      COW

S A V FINAL ANSWER 0035 AMF CAF NHF  
 Sire: **S A V PIONEER 7301 (1481377)**  
 S A V BLACKBIRD 5297 CAC

S A V 5175 BANDO 1024 CAC  
 Dam: **XCEL GONNA SHINE 101U (1463897)**  
 LADY OF PEAK DOT 516R

Exposed to BCAR Preference 122Y  
 May 4 – July 30  
 Due to calve mid-February

SITZ TRAVELER 8180 AMF CAF NHF  
 S A V EMULOUS 8145 CAF  
 BOYD NEW DAY 8005 AMF CAF NHF  
 S A V BLACKBIRD 1082 CAC  
 S A F 598 BANDO 5175 AMF CAC  
 CHAMPION HILL SLEEPY MISS  
 STEVENSON RAINMAKER D15K  
 LADY OF PEAK DOT 871L

DPR	BW	WW	YW	MILK	TM
	-	-	-	-	-

**39****BANDURA MS MIA 23X**

January 15 2010      BAN 23X      CAA #1557053  
 BW: 92lbs.      WW: 674 lbs.      COW

HF FREE WHEELER 191N  
 Sire: **LLB FREE WHEELER 268S (1339786)**  
 LLB NITCHIE 637J

BON VIEW NEW DESIGN 878 AMF CAF NHF  
 Dam: **BAN MS MIA (1427269)**  
 HOWE MS MIA 192R

Exposed to BCAR Preference 122Y  
 May 4 – July 30  
 Due to calve mid-February.

TC FREEDOM 104 AMF CAF NHF  
 DURALTA 14C ECHO 32E  
 MERIT LUCAS 7040  
 DOUBLE J NITCHIE 73D  
 B/R NEW DESIGN 036 AMF CAF NHF  
 BON VIEW GAMMER 85 CAC  
 EBON HILL LIBERTY 13'01  
 HOWE MS MIA 48M

DPR	BW	WW	YW	MILK	TM
	+5.9	+44	+80	+28	

**38A****SOUTHLAND SUNSHINE 84Z**

February 28 2012      CADS 84Z      CAA #1663102  
 BW: 65lbs.      WW: 753 lbs      HEIFER CALF

FIGURE 8 ANGUS TOM BOY 509R  
 Sire: **LLB EXCEL 249W (1508007)**  
 LLB LADY PRIDE 650S

DPR	BW	WW	YW	MILK	TM
	-1	+9	+26	+6	

**39A****Southland Ms Mia 97Z**

MARCH 7 2012      CADS 97Z      CAA# APPLIED  
 BW: 80 lbs      WW: 689 lbs      HEIFER CALF

ADELPHI BURGESS J 39X 672997  
 Sire: **FIGURE 8 ANGUS TOM BOY 509R 1252270**  
 FIGURE 8 ANGUS BIG DEAL 911711

DPR	BW	WW	YW	MILK	TM

**40****SOUTHLAND DIXIE 46X**

January 30 2010      CADS 46X      CAA #1597539  
 BW: 81lbs.      WW: 638 lbs.      COW

NORTHLINE LANDSLIDE 787N  
 Sire: **SOUTHLAND DR FEELGOOD 194S**  
 SOUTHLAND ON TIME 21M

SOUTHLAND MATRIX 24K  
 Dam: **SOUTHLAND DIXIE 38M (1105423)**  
 SOUTHLAND DIXIE 173K

Exposed to BCAR Preference 122Y  
 May 4 – July 30.  
 Due to calve mid-February.

ROTH REGULATOR 0405 CAF  
 DREAM MAKERS JESTRESS 787G  
 KBJ CONQUOR ALL 447J  
 DOUBLE J LASS 452A  
 N BAR EMULATION EXT AMF CAF NHF  
 SOUTHLAND ANNE 79H  
 NAF STOCKER 6G  
 CRESCENT CREEK PRIDE 40B

DPR	BW	WW	YW	MILK	TM
	+2.7	+36	+52	+8	



Lot 40  
**Southland Dixie 46X**

**40A****SOUTHLAND DIXIE 59Z**

February 22 2012      CADS 59Z      CAA #1663085  
 BW: 76lbs.      WW: 642 lbs      HEIFER CALF

FIGURE 8 ANGUS TOM BOY 509R  
 Sire: **LLB CASINO 333W (1520264)**  
 LLB KINCHTRY BEAUTY 317L

DPR	BW	WW	YW	MILK	TM
	+3.3	+28	+40	+9	

**41****SOUTHLAND BARBARA 63X**

February 01 2010      CADS 63X      CAA #1577843  
 BW: 77lbs.      WW: 678 lbs.      COW

NORTHLINE LANDSLIDE 787N  
 Sire: **SOUTHLAND DR FEELGOOD 194S**  
 SOUTHLAND ON TIME 21M

N BAR EMULATION EXT AMF CAF NHF  
 Dam: **SOUTHLAND BARBARA 16L (1060838)**  
 SOUTHLAND BARBARA 117J

Exposed to BCAR Preference 122Y  
 May 4 - July 30.  
 Due to calve mid-February.

ROTH REGULATOR 0405 CAF  
 DREAM MAKERS JESTRESS 787G  
 KBJ CONQUOR ALL 447J  
 DOUBLE J LASS 452A  
 EMULATION N BAR 5522  
 N BAR PRIMROSE 2424  
 LAMBS OVERDRIVE 45E  
 OMEGA BELL

DPR	BW	WW	YW	MILK	TM
	+2.7	+42	+57	+9	



Lot 41  
 Southland Barbara 63X

**41A****SOUTHLAND BARBARA 70Z**

February 24 2012      CADS 70Z      CAA #1663092  
 BW: 85lbs.      WW: 760 lbs      HEIFER CALF

FIGURE 8 ANGUS TOM BOY 509R  
 Sire: **LLB EXCEL 249W (1508007)**  
 LLB LADY PRIDE 650S

DPR	BW	WW	YW	MILK	TM
	+5.1	+35	+43	+10	

**42****NORSEMAN QUEEN RUTH 68'10**

February 20 2010      NORS 68X      CAA #1560765  
 BW: 73lbs.      WW: 654 lbs.      COW

HF FREE WHEELER 191N  
 Sire: **HF SHADOW 12S (1332004)**  
 HF BLACKBIRD 145P

RRD FAME 1K  
 Dam: **CRESCENT CREEK QUEEN RUTH 25M**  
 CRESCENT CREEK QUEEN RUTH 02J

Exposed to BCAR Preference 122Y  
 May 4 - July 30.  
 Due to calve mid-March.

TC FREEDOM 104 AMF CAF NHF  
 DURALTA 14C ECHO 32E  
 HF POWER SOURCE 94M  
 HF BLACKBIRD 120L  
 S A F FAME AMF CAF NHF  
 RRD TIBBIE 4E  
 TLA PRIDE'S REVIVAL 85G  
 CRESCENT CREEK QUEEN RUTH 14Z

DPR	BW	WW	YW	MILK	TM
	0.1	+37	+71	+15	

**43****SOUTHLAND RACHEL 92X**

February 03 2010      CADS 92X      CAA #1655284  
 BW: 84lbs.      WW: 659 lbs.      COW

CIRCLE A ADVENTURE 0124  
 Sire: **ONEILLS EXPEDITION (1422827)**  
 ONEILLS DELIA 715 AMF CAF NHF

DMM FLEX 6L  
 Dam: **SOUTHLAND RACHEL 96R (1274062)**  
 SOUTHLAND RACHEL 157M

Exposed to BCAR Preference 122Y  
 May 4 - July 30.  
 Due to calve early to mid-February

S A F FOCUS OF E R AMF CAF NHF  
 ACF EVERGREEN 8007  
 CIRCLE OAK TRAVELER 524  
 ONEILLS DELIA 703 CAF  
 DMM FLEX 24E  
 DMM MISS ESSENCE 126H  
 SANDY BAR BRAVE HEART 86K  
 SOUTHLAND RACHEL 182K

EPR	BW	WW	YW	MILK	TM
	+4.3	+36	+70	+16	

**42A****SOUTHLAND QUEEN RUTH 36Z**

FEBRUARY 14 2012      CADS 36Z      CAA# 1701360  
 BW:      WW: 655 lbs      HEIFER CALF

NORTHLINE LANDSLIDE 787N  
 Sire: **SOUTHLAND DR FEELGOOD 194S**  
 SOUTHLAND ON TIME 21M

DPR	BW	WW	YW	MILK	TM
	+2.6	+46	+73	+12	+45

**43A****SOUTHLAND RACHEL 64Z**

February 23 2012      CADS 64Z      CAA #1663089  
 BW: 74lbs.      WW: 595 lbs      HEIFER CALF

FIGURE 8 ANGUS TOM BOY 509R  
 Sire: **LLB CASINO 333W (1520264)**  
 LLB KINCHTRY BEAUTY 317L

EPR	BW	WW	YW	MILK	TM
	+3.1	+26	+49	+13	

**44****Werner Rachel 0096**

FEBRUARY 1 2010      IMP 96X      AAA# 16655459  
 BW: 88 lbs      COW

Connealy Reflection  
 Sire: **MCATL Reachout 836**  
 MA Lady Barbara 453

TC Grid Topper 355  
 Dam: **Werner Mill Iron Rachel 7300**  
 BT Rachel 847P

Exposed to BCAR Preference 122Y  
 May 4 - July 30.  
 Due to calve mid-March

Bon View New Design 878  
 Happy Grill of Conanga 6260  
 TC Freedom 104  
 Lady Barbara 348 M M  
 G A R Grid Maker  
 TC Pride 8067  
 Leachman Dateline 8661  
 BT Rachel 138J

DPR	BW	WW	YW	MILK	TM
	+3.2	+55	+101	+29	

**45****SOUTHLAND VALOR 103X**

February 04 2010      CADS 103X      CAA #1655354  
 BW: 84lbs.      WW: 734 lbs.      HEIFER CALF

SOUTHLAND FREE RIDE 68R  
 Sire: **SOUTHLAND EXCLUSIVE 62U (1421885)**  
 SOUTHLAND SUSAN 58L

SOUTHLAND MATRIX 24K  
 Dam: **SOUTHLAND VALOR 129P (1289029)**  
 SOUTHLAND VALOR 205M

Exposed to BCAR Preference 122Y  
 May 4 - July 30.  
 Due to calve the end of February.

TC FREEDOM 104 AMF CAF NHF  
 SOUTHLAND ERROLINE 44L  
 RONAN R BANDOLIEMERE 108H  
 RONAN SUSAN 36J  
 N BAR EMULATION EXT AMF CAF NHF  
 SOUTHLAND ANNE 79H  
 PEAK DOT PANAMA 58G  
 MISS POPICK VALOR 100E

EPR	BW	WW	YW	MILK	TM
	+4	+48	+78	+19	

**45A****SOUTHLAND VALOR 86Z**

March 01 2012      CADS 86Z      CAA #1699856  
 BW: 71lbs.      WW: 637 lbs      HEIFER CALF

FIGURE 8 ANGUS TOM BOY 509R  
 Sire: **LLB CASINO 333W (1520264)**  
 LLB KINCHTRY BEAUTY 317L

EPR	BW	WW	YW	MILK	TM
	+2.3	+30	+53	+15	

**46****SOUTHLAND HOTTIE 107X**February 05 2010  
BW: 84lbs.CADS 107X    CAA #1655784  
COWSCHURRTOP MC 2500 AMF CAF  
Sire: **WERNER STREET SENSE 247** (1442533)  
WERNER FALCON JILT 356RTC FREEDOM 104 AMF CAF NHF  
Dam: **SOUTHLAND HOTTIE 136T** (1399925)  
SOUTHLAND HOTTIE 12M ETExposed to BCAR Preference 122Y  
May 4 - July 30.  
Due to calve early to mid-February.SCHURRTOP M C  
SCHURRTOP R S 1413 2153  
BR MIDLAND AMF CAF NHF  
SUMMITCREST JILT 080J  
CONNEALY FOREFRONT AMF CAF NHF  
T C RUBY 9095 CAF  
KBJ CONQUOR ALL 447J  
CRESCENT CREEK DUCHESS 4B

EPD	BW	WW	YW	MILK	TM
	+5.3	+48	+76	+22	

**Southland Hottie 136T**  
Dam of Lot 46 - Southland Hottie 107X**46A****SOUTHLAND HOTTIE 63Z**February 23 2012  
BW: 78lbs.CADS 63Z    CAA #1663088  
WW: 749 lbs    HEIFER CALFFIGURE 8 ANGUS TOM BOY 509R  
Sire: **LLB CASINO 333W** (1520264)  
LLB KINCHTRY BEAUTY 317L

EPD	BW	WW	YW	MILK	TM
	+3.9	+32	+52	+16	

**47****SOUTHLAND LADY 123X**February 07 2010  
BW: 80lbs.CADS 123X    CAA #1597519  
WW: 695 lbs.    COWSCHURRTOP MC 2500 AMF CAF  
Sire: **WERNER STREET SENSE 247** (1442533)  
WERNER FALCON JILT 356RPEAK DOT PANAMA 58G  
Dam: **SOUTHLAND LADY 201M** (1244862)  
CEDAR CREEK LADY 41GExposed to BCAR Preference 122Y  
May 4 - July 30.  
Due to calve mid-MarchSCHURRTOP M C  
SCHURRTOP R S 1413 2153  
BR MIDLAND AMF CAF NHF  
SUMMITCREST JILT 080J  
O S U PANAMA 4178  
MIA OF PEAK DOT 539E  
CHAMPION HILL GENERAL STONE  
CEDAR CREEK LADY 41B

EPD	BW	WW	YW	MILK	TM
	+3.6	+41	+65	+18	

**Southland Lady 201M**  
Dam of Lot 47**47A****SOUTHLAND LADY 108Z**March 16 2012  
BW: 74lbs.CADS 108Z    CAA #1667162  
WW: 587 lbs    HEIFER CALFFIGURE 8 ANGUS TOM BOY 509R  
Sire: **LLB CASINO 333W** (1520264)  
LLB KINCHTRY BEAUTY 317L

EPD	BW	WW	YW	MILK	TM
	+3	+29	+47	+14	

**Southland Main Street 52W**  
Owned with LLB Angus  
Full brother to Lot 47**48****JUSTAMERE 807 CHERISE 125X**January 25 2010  
BW: 70lbs.AFA 125X    CAA #1568455  
WW: 717 lbs.    COWBC 7022 RAVEN 7965  
Sire: **EXARPAF RA 0142 807 AMF** (1535325)  
P A F 776C DATELINE 0142JUST-ROCK 1118 QUINLAN 617P  
Dam: **JUSTAMERE 617P CHERISE 527U**  
JUSTA 088 CHERISE 513FExposed to BCAR Preference 122Y  
May 4 - July 30.  
Due to calve mid to end of February.B C MARATHON 7022 AMF CAF NHF  
O C C BLACKBIRD 796F  
CONNEALY DATELINE  
O C C BLACKBIRD 766C  
EXAR BIG TIMBER 1118  
DIAMOND D QUEEN 406G  
WESTWIND BREAKER 088  
JUSTA SOURCE CHERISE 822Y

EPD	BW	WW	YW	MILK	TM
	+1.8	+38	+76	+19	

**49****SOUTHLAND RUBY 79Y**March 01 2011  
BW: 80lbs.CADS 79Y    CAA #1640792  
WW: 543 lbs    BRED HEIFERB C LOOKOUT 7024 AMF CAF NHF  
Sire: **BXB LOOKALIKE 224W** (1576847)  
BXB DESIGNER 109NSOUTHLAND FREE RIDE 68R  
Dam: **SOUTHLAND RUBY 213U** (1450910)  
SOUTHLAND RUBY 116L

EPD	BW	WW	YW	MILK	TM
	+4.4	+38	+69	+19	

AI bred to Limestone Blu Ray W661  
May 29.  
Exposed to Limestone Blu Ray W661  
June 5 - August 15.  
Safe to the AI**48A****SOUTHLAND CHERISE 23Z**February 10 2012  
BW: 77lbs.CADS 23Z    CAA #1663066  
WW: 654 lbs    HEIFER CALFMYTTY IN FOCUS AMF CAF NHF  
Sire: **B P F SPECIAL FOCUS 504**  
B P F BLACK CASH 341

EPD	BW	WW	YW	MILK	TM
	+1.3	+48	+88	+24	

**49A****SOUTHLAND RUBY 156Z**April 18 2012  
BW: 78lbs.CADS 156Z    CAA #1698724  
WW: 715 lbs    HEIFER CALFWK REWARD  
Sire: **VAR REWARD 9360** (1606228)  
VAR RITO SOPHIE 3835SOUTHLAND FREE RIDE 68R  
Dam: **SOUTHLAND RUBY 213U** (1450910)  
SOUTHLAND RUBY 116L

EPD	BW	WW	YW	MILK	TM
	+2.9	+51	+90	+15	

**50****SOUTHLAND ERICA 130X**

February 08 2010      CADS 130X      CAA #1597538  
 BW: 82lbs.      WW: 699 lbs.      COW

NORTHLINE LANDSLIDE 787N  
 Sire: **SOUTHLAND DR FEELGOOD 194S**  
 SOUTHLAND ON TIME 21M

SOUTHLAND FREE RIDE 68R  
 Dam: **SOUTHLAND ERICA 118U (1450747)**  
 SOUTHLAND ERICA 137R

Exposed to BCAR Preference 122Y  
 May 4 - July 30.  
 Due to calve mid to end of May.

ROTH REGULATOR 0405 CAF  
 DREAM MAKERS JESTRESS 787G  
 KBJ CONQUOR ALL 447J  
 DOUBLE J LASS 452A  
 TC FREEDOM 104 AMF CAF NHF  
 SOUTHLAND ERROLINE 44L  
 DMM AMBUSH 22M  
 SOUTHLAND ERICA 80L

EPD	BW	WW	YW	MILK	TM
	+4.9	+50	+79	+13	

**50A****SOUTHLAND ERICA 73Z**

February 25 2012      CADS 73Z      CAA #1663094  
 BW: 86lbs.      WW: 678 lbs      HEIFER CALF

FIGURE 8 ANGUS TOM BOY 509R  
 Sire: **LLB CASINO 333W (1520264)**  
 LLB KINCHTRY BEAUTY 317L

EPD	BW	WW	YW	MILK	TM
	+5.9	+38	+54	+12	

**Lot 50A**  
**Southland Erica 73Z**

**51****SOUTHLAND ERICA 64Y**

February 24 2011      CADS 64Y      CAA #1631489  
 BW: 85lbs.      WW: 569 lbs.      BRED HEIFER

SOUTHLAND FREE RIDE 68R  
 Sire: **SOUTHLAND FREE STYLE 163U (1460243)**  
 SOUTHLAND ON TIME 21M

JUSTAMERE BLACK TIMBER 721P  
 Dam: **SOUTHLAND ERICA 206S (1346540)**  
 SOUTHLAND ERICA 163N

Exposed to Limestone Blu Ray W661  
 May 15 - August 15.  
 Due to calve mid-February.

EPD	BW	WW	YW	MILK	TM
	+3.9	+37	+68	+16	



**Lot 51**  
**Southland Erica 64Y**

**51A****SOUTHLAND ERICA 13Z**

February 07 2012      CADS 13Z      CAA #1663056  
 BW: 87lbs.      WW: 736 lbs      HEIFER CALF

SOUTHLAND FREE RIDE 68R  
 Sire: **SOUTHLAND FREE STYLE 163U (1460243)**  
 SOUTHLAND ON TIME 21M

JUSTAMERE BLACK TIMBER 721P  
 Dam: **SOUTHLAND ERICA 206S (1346540)**  
 SOUTHLAND ERICA 163N

EPD	BW	WW	YW	MILK	TM
	+4.1	+42	+72	+16	

**52****SOUTHLAND ROSEBUD 116Y**

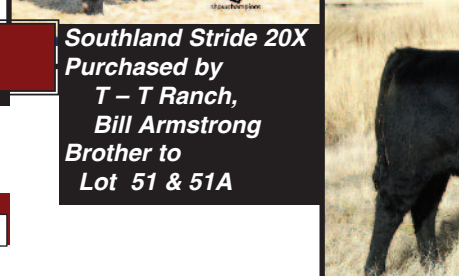
April 12 2011      CADS 116Y      CAA #1640808  
 BW: 80lbs.      WW: 610 lbs.      BRED HEIFER

WK REWARD  
 Sire: **VAR REWARD 9360 (1606228)**  
 VAR RITO SOPHIE 3835

ANGUS ACRES TEX 16S  
 Dam: **RONAN R ROSEBUD 7J (956079)**  
 RONAN R ROSEBUD 27Y

AI bred to BAN Masterpiece 9X  
 May 14  
 Exposed to Limestone Blu Ray W661  
 June 5 - August 15.  
 Safe to the AI

EPD	BW	WW	YW	MILK	TM
	+3.1	+44	+70	+9	



**Southland Stride 20X**  
 Purchased by  
 T - T Ranch,  
 Bill Armstrong  
 Brother to  
 Lot 51 & 51A



**Southland Hot Stuff 65T**  
 Maternal Sister to Lot 52 & 52A  
 Purchased by Noreseman Farms

**52A****SOUTHLAND ROSEBUD 106Z**

March 15 2012      CADS 106Z      CAA #1667161  
 BW: 79lbs.      WW: 675 lbs      HEIFER CALF

BC 7022 RAVEN 7965  
 Sire: **LIMESTONE BLU RAY W661 (1591075)**  
 C&H EVER ENTENSE 4036

ANGUS ACRES TEX 16S  
 Dam: **RONAN R ROSEBUD 7J (956079)**  
 RONAN R ROSEBUD 27Y

EPD	BW	WW	YW	MILK	TM
	+2.6	+31	+52	+11	

**52B****SOUTHLAND ROSEBUD 61Y**

February 23 2011      CADS 61Y      CAA #1640795  
 BW: 79lbs.      WW: 596 lbs.      BRED HEIFER

B C LOOKOUT 7024 AMF CAF NHF  
 Sire: **BXB LOOKALIKE 224W (1576847)**  
 BXB DESIGNER 109N

SOUTHLAND JIMMY RAY 170N  
 Dam: **SOUTHLAND ROSEBUD 281U (1462646)**  
 RONAN R ROSEBUD 7J

EPD	BW	WW	YW	MILK	TM
	+2.9	+31	+57	+14	

AI bred to BPF Special Focus 504  
 May 21.  
 Exposed to Limestone Blu Ray W661  
 June 5 - August 15.  
 Safe to the AI.