



**Brandl Cattle Co. &  
Guest Lake Bottom Cattle Co.  
Black & Red Angus & Simmental Bull Sale**



**Saturday, March 2nd, 2013  
Live Video Auction - 3:00 PM  
At the Farm - Jarvie, AB**



# Welcome to Our 11th Annual Bull Sale

It's always interesting from year to year to reflect back on thoughts in previous years opening comments. Many things have stayed constant in our operation. Our commitment to structurally sound functional cattle that pay the bills, trouble free low maintenance cattle with MUSCLE, PERFORMANCE, and MATERNAL POWER is unwavering.

One thing that's constant though is change. Eight years ago with requests from customers and surrounding cattlemen we incorporated a Red Angus program into our operation and our bull sale. They have complimented our Black Angus very well and have diversified our customer base. We have proven they were not just a side show - our reds also mean business!

This year we are very excited to introduce the next phase to our bull sale - Welcome to Lake Bottom Cattle Co., Barrie, Colleen and Dacie Przekop who are consigning an outstanding group of Simmental bulls to the sale. We have watched their program develop over the past several years. They have definitely shown a commitment to purchase and breed some of the best genetics available to them. Their bulls are sound footed, good tempered, deep bodied, heavy muscled beef machines. We are sure you will be impressed with both the bulls and the Przekop family and their commitment to customer satisfaction.

Evolution in the cattle industry has seen the majority of commercial herds utilizing both Angus and Simmental genetics. The two breeds compliment each other extremely well. In fact in the last couple years I have had several top cattlemen state that they really believe that in 20 years time Angus and Simmental will dominate the commercial industry just like Holstein dominates the dairy industry. In 2011 almost 50% of the purebred cattle registered in Canada were Angus (58 000 head) Simmental was next at 17 500 head, followed by Hereford, Charolais and Limousin at 15 500, 14 000 and 5 500 head respectively.

Brandl Cattle Co. is committed to supplying our customers with all the tools to be successful into the future. Our customers sell their product by the pound. Life also seems to get busier. There is no time for problem cattle. Calves must be born unassisted, cows must mother and raise calves on their own, maintain themselves, breed back and wean a quality calf. Those calves must then perform on feed and hang up a top quality carcass. It is because our cattle are accomplishing this that we continue to sell more bulls each year even when cowherds are declining in many areas. 80 % of our bulls sell to repeat customers and the other 20% of our customers we are taking away from someone else!

Join us Saturday, March 2nd. The sale will start at 3:00 PM and be followed by a customer appreciation steak supper as well as some entertainment. This year the Pembina West and Flatbush 4-H Beef Clubs will be hosting the Spring Barn Dance starting at 8:00 PM featuring the band "Ain't No Rodeo" There will be silent auction items and a dutch auction on a garden shed. All bull sale attendants will get in free.

We look forward to your appraisal of our bulls. If you have any questions please do not hesitate to contact us or any of our professional sales staff.

Regards,

*Byron*



**Byron & Gwen**

**Kailey, Wynton & Landon Brandl**

**Box 128 Jarvie, AB T0G 1H0**

**Ph/Fx: 780-954-2599**

**Email: brandl@mcsnet.ca**



# Black Angus, Red Angus & Simmental Bull Sale

*And Guest*



## SALE DAY PHONES

Brandl Cattle Co. (780) 954-2599  
Byron Brandl Cell (780) 349-1765  
Gwen Brandl Cell (780) 349-1704  
Barrie Cell: 780-656-5466  
Dacie Cell: 780-656-5513  
Jason French (780) 305-9789  
Mark Shologan (780) 699-5082

## *Offering 66 Bulls*

**33 Black Angus Bulls • 15 Red Angus Bulls  
18 Simmental Bulls**

### *- Please Note Live Video Sale -*

This is a video sale in a Heated Sale Barn. No live animals will be entering the ring; the bulls will be penned outside the sale barn with pre-recorded videos played on large TV Screens during the sale.

Therefore, we encourage you to come early on Sale Day or stop by prior to the sale day to inspect the sale offering.

**Video Clips for Sale lot  
available at: [www.cattlevids.ca](http://www.cattlevids.ca)**



**CATTLEVIDS.CA**

• **Saturday March 2nd 2013** •

**Live Auction Sale Time: 3:00 PM**

Sale Location: Brandl Cattle Co New Sale Facility  
See Back Cover for Map to Farm

Brandl Cattle Co. invites everyone to come for supper and entertainment after the sale ..

Again This Year...Spring Barn Dance  
with all proceeds to Pembina West & Flatbush 4-H Beef Club  
**8PM - 1AM** - Details on Page 5.

**Sale goes no matter the weather - Please come  
and view the the cattle anytime prior to the sale.**

## *Sale Staff*

### **Auctioneer:**

Ryan Dorran Cell: 403-507-6483

### **Ringmen:**

Robert Lind: 780-542-0123  
Bryon Wolters: 780-581-8396

### **Sale Reps:**

Shane Castle - Ph: (306) 741-7485  
Bryan McKenzie - Ph: (403) 627-8266  
Jason French - Ph: (780)-305-9789

### **DLMS Online Internet Bidding:**

Mark Shologan - 780-699-5082  
See page 5 complete details.

### **Insurance:**

Canadian Farm Insurance  
Monica Czech - (780) 732-8613

### **Special Guest Representatives:**

Brian Good - Canadian Angus Assn Commercial Fieldman

### *Local Accomodations*

Westlock Inn                      West 18 Inn  
Ph. 780-349-4483                  Ph. 780-349-4102

Fawcett Sportsmen Inn  
Fawcett Truck Stop 780-681-2248

If you wish we would be happy to arrange accommodations for you.

## *Sight Unseen Purchase Plan*

We would like you to attend our sale, but if you can not you can have Byron or any of our sales staff personally handle your purchase. Call them with your specifications and discuss the offering, preferably a week before the sale. Byron or any of the sales staff will gladly assist you with your sale selections and represent you on sale day. We guarantee full satisfaction upon delivery or you don't own them.

## *Bull Delivery Options*

### **Option 1 - Immediate Pick Up**

Possession within 3 days will get a \$50 refund.

### **Option 2 - BCC/ LBCC Delivery**

Brandl Cattle Co./ Lake Bottom Cattle Co. will deliver bulls free of charge at our convenience following the sale with in 500 KM of Jarvie, further will be at cost.

### **Option 3 - BCC/ LBCC Development**

Yearling bulls can be left at Brandl Cattle Co / Lake Bottom Cattle Co after Sale at the buyers risk for No Charge. After April 1 a charge of \$3.00/ day until buyer wishes to transport own bulls. Insurance recommended.

**Note:** All bulls 2 years and older must be in buyers possession by March 15th.

## *Volume Buyers Discount*

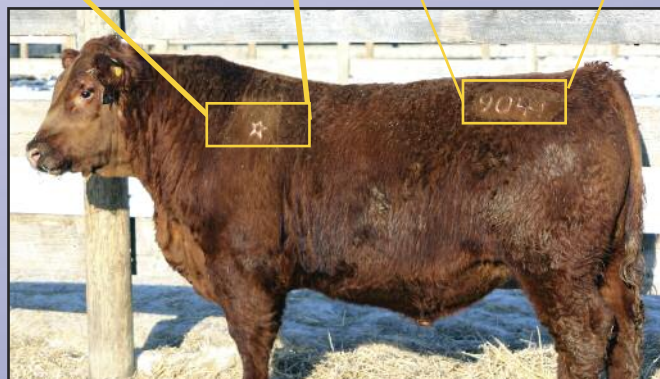
Volume Discount -

3 bulls 3%, 4 bulls 4%, 5 or more bulls 5%

## *Brandl Cattle Co*

## *Freeze Brand Number*

All BCC bulls carry the 5 point star brand on the left shoulder - BCC Brand of Quality and an individual freeze brand with their own number....no more reading tattoos when the bulls loose their ear tags!



## **The BCC 10 and Over Club (Who will be the first to 20?)**

### **Uphill Feeders -**

Gordon, Bev Dylan Hansen  
Colby and Laurie Hansen 19 Bulls

Jay & Robin Booth 19 Bulls

Clyde McCoy 16 Bulls

Dave & Myrna van de Ligt 14 Bulls

### **French Creek Farms -**

Michel & Rhonda Kaliel/  
David & Mary Kaliel 11 Bulls

### **Allen Crop & Cattle -**

Earl & Ward Allen 11 Bulls

### **Eastlight Farms -**

Fred & Rita/Donald van de Ligt 13 Bulls

Brad & Christine Tymkow 11 Bulls

### **Almost There**

K5 Farms - Ken & Joanne Kaliel 9 Bulls

Bill & Barb McCarthur 9 Bulls

Ben & Hendria Hospers 9

Lyons - Ross & Penny/ Beau & Cristy 8 Bulls

Rinas - Barry & Stacey/ Don & Dorothy 8 Bulls

# Can't make it to the sale?

## Bid Live Online.



### Instructions for Viewing And Bidding At the Sale

1. Visit [www.dlms.ca](http://www.dlms.ca)
2. Fill out the registration form located under registration.
3. Click on downloads and follow the four step instructions located on the screen.
4. Click test your computer. You will see the Test Video and Bid Control Box.

To be Approved as a bidder or any other questions please e-mail [mshologan@dlms.ca](mailto:mshologan@dlms.ca) or call Mark - 780-699-5082

With DLMS you can Watch, Listen & Bid on Your Computer just like you were there with Online Bidding over the Internet

Direct Livestock Marketing Systems

*We're Making the Connection*

# DLMS

[www.dlms.ca](http://www.dlms.ca)

**Visit [www.dlms.ca](http://www.dlms.ca) today !**

### *Yearling Bull Herd Health Protocol*

All bulls have been vaccinated for Blackleg, Tetanus, IBR, PI3, BVD and other associated viruses/diseases including Footrot as per the following schedule:

- Birth - Powerbac Probiotic, Power Boost Vitamin & Mineral Drench
- March/April - Covexin 9, Pyramid MLV4, Somnustar PH, Injectable Ivomec
- September - Vision 8 Somnus, Vista Once, Ivomec Pour-On
- January - Fusogard
- February - Fusogard, Ivomec Pour-On

### *Semen Testing*

All of the bulls selling will have satisfactorily passed a semen test by Deanna Spiker, DVM - Jarvie, AB prior to delivery.

### *Footrot Vaccine*

All Brandl Cattle Co bulls selling in the sale have received 2 shots of Fusogard hoofrot vaccine, this is to help keep the bulls working for you our customers.



*View Sale Catalogue*

*& Videos Online at:*

[www.brandlcattleco.com](http://www.brandlcattleco.com)

[www.dlms.ca](http://www.dlms.ca)

[www.cattlevids.ca](http://www.cattlevids.ca)

## Using Yearling Bulls

We firmly believe in the use of yearling bulls and feel that it is one of the best years of their lives. It is a time when they are easy to manage and introduce to the herd and their only concern is breeding cows. When yearling bulls are managed appropriately they will perform better over time than bulls purchased as two year olds. Here are some guidelines for care of your yearling bulls:

- Upon arrival at your ranch, keep yearling bulls separate from older bulls and feed them a maintenance ration of 5 - 8 lbs of grain or pellets and free choice of hay. Then reduce the amount of grain so they are on straight hay or grass two weeks prior to turn out.
- Where possible try to limit the bulls to 45 - 60 days of pasture service the first year. At this time remove them and put them in a separate pasture with plenty of grass or good quality hay.
- A winter feeding ration of 3 - 5 lbs of grain or pellets plus free choice hay will put the bulls in condition and allow them to grow and develop. You will also benefit by one and probably two or more years of use out of a well managed and healthy bull purchased as a yearling.

# *Come for the bulls.....*

*but stay for the Spring Barn Dance!*



**Brandl Cattle Co. invites everyone to come for  
The Spring Barn Dance ..**

**Music by "Ain't No Rodeo" from 8 PM to 1 AM**

- all bull customers past and present get in free.
- Don't need a bull – don't even have cows tickets \$15 each all proceeds to Flatbush & Pembina West 4-H Beef Clubs
- silent auction items



## **Pembina West 4-H Beef Club & Flatbush 4-H Club Garden Shed raffle**

Bill Fauque and Peter Hanlon have graciously donated a garden shed as a 4-H fundraiser this year. Tickets will be sold by dutch auction during the dance.

**On behalf of both Flatbush  
4-H Beef Club and Pembina West 4-H Beef Club  
ThankYou everyone for your generosity!**



# Brandl Cattle Company Black Reference Sires

## Ref Sire *Bosulow Elmark Q209*



BW	86
205 Day Wt.	879
365 Day Wt.	1510

WEDDERLIE NETMARK A281  
**SIRE: BOSULLOW BLACKMARK E151**  
 BOSULLOW BLACKIRD C092

NIGHTINGALE ECHT A060  
**DAM: BOSULLOW ERICA C085**  
 BOSULLOW ERICA W3

- Total Outcross to North American genetics
- Explosive performance
- Top 1% EBV's for weight, milk, carcass & fertility
- First daughters are now in production and are working exceptionally well



## Ref Sire *BCC Prairie Moon 5570*



BW	98
205 Day Wt.	725
365 Day Wt.	1209

SANDY BAR CASTLEROCK 173P  
**SIRE: SAR SILVER PRAIRIE 173S**  
 SFL BLUEBIRD LASS 15F

BCC JAZZ 044  
**DAM: BCC CLARICE 26K**  
 PJ'S CINDY-LEE 15'97

- Outcross pedigree with generations of Muscle, Performance & Maternal Power
- His dam is an ELITE female with a weaning index of 109 on 10 calves



## Ref Sire *Justamere 422 Eric 72870*



BW	85
205 Day Wt.	735
365 Day Wt.	1200

EXAR SUDDEN IMPACT 1537  
**SIRE: EXARPAF 422**  
 PAF 8571 AT 1013

SAR DIVERSITY'S TRAVELER 2280  
**DAM: ENNS DIVERSITY'S ERICA 25P**  
 S A R STOCKMAN ERICA 2626

- Purchased from Justamere Dispersal in 2009
- Calving ease with excellent performance
- Paternal brother to Justamere 422 Impact 244Y Canadian Junior Show Bull of the Year



# Black Angus 2 Year Olds



Lot  
★  
17Y

## BCC Jaguar 17Y

BCC 17Y 1659118 17 JAN 2011

HF KODIAK 5R  
**SIRE: HF TIGER 5T**  
HF ECHO 84R

GDAR SVF TRAVELER 234D  
**DAM: MVF ELLEN 26N**  
MVF ELLEN 111J

BW	205 Day Wt.	365 Day Wt.
85	710	1125

E	BW	WW	YW	MILK	TM
P	2.3	56	105	24	21
D					

The 2009 World Angus Forum Sale had some of the top genetics available anywhere. There we purchased embryos from the mating of the World Forum Champion "Tiger" and Mountainviews great Ellen female resulting in this outstanding young sire. We used 17Y on our heifers and our 2 and 3 year old cows last year. As a yearling he settled a large group of females promptly and efficiently. The calves from him are a very impressive sire group already. We are selling this bull outright, but given the right buyer location and breeding seasons we may be interested in purchasing back an interest in this bull.

Lot  
★  
37Y

## BCC Elmark 37Y

BCC 37Y 1617483 25 JAN 2011

BOSULLOW BLACKMARK E151  
**SIRE: BOSULLOW ELMARK G209**  
BOSULLOW ERICA C085

DMM DYNASTY 03G  
**DAM: BCC BLACK VELVET 11K**  
BCC BLACK VELVET 47H



BW	94
205 Day Wt.	803
365 Day Wt.	1223

EPD	
BW	4.4
WW	42
YW	59
MILK	7
TM	28

This was the runner up for High Point Bull on the 2012 Alberta Farmer Express Summer Show Series. The 11K dam has been a solid producer for us having sold sons to Blue Jay Angus Farm, Dennis Carbert and Michel Kaliel. We have the only sons of Elmark in North America for sale. Last year the Elmark sons averaged \$5325.

*Dam:*  
**BCC Black**  
**Velvet 11K**







## BCC Impact 71Y

BCC 71Y 1617490 10 FEB 2011

EXARPAF 422

**SIRE: JUSTAMERE 422 ERIC 728W**  
ENNS DIVERSITY'S ERICA 25P

BCC SHOCKIN' Y'ALL 1P  
**DAM: BCC BLACK VELVET 7T**  
BCC BLACK VELVET 22N

BW	76
205 Day Wt.	664
365 Day Wt.	1042

EPD	4.4
BW	43
WW	75
YW	15
MILK	36
TM	

The more offspring we see from the Justamere Eric bull the more we like him. Easy calving with exceptional performance. You would never guess that this robust young sire is a twin. This bull is small headed and smooth shouldered and well structured. Your heifers need him and your cows will love him. This is a maternal brother to Lot 14Z. The 7T dam is a really good brood matron with a son selling to Brad & Christine Tymkow and a daughter to Steinley Farms, SK. The 22N grand dam is an ELITE female with a weaning index of 106 on 6 calves.



Dam of Lot 4Z : BCC Black Velvet 7S

NIGHTINGALE DEFIANCE E264  
**SIRE: NIGHTINGALE PROUD JAKE G405**  
NIGHTINGALE PRIDE JEANIE D237  
HYLINE RIGHT WAY 781  
**DAM: BCC BLACK VELVET 7S**  
BCC BLACK VELVET 47H



## BCC Hercules 4Z

BCC 4Z 1680846 8 JAN 2012

BW	205 Day Wt.	365 Day Wt.
87	795	1237

EPD	BW	WW	YW	MILK	TM
2.4	37	58	12	31	

The first son of Nightingale Proud Jake to sell in North America! Always willing to be leaders and not followers we are the only breeders in N.A. to use some bulls from England in our program. 4Z is a long smooth muscle machine. His dam produced a son to Keith and Lindy Wiart as well as one last year to Jay and Robin Booth.



## BCC Elmark 14Z

BCC 14Z 1680853 14 JAN 2012

BOSULLOW BLACKMARK E151

**SIRE: BOSULLOW ELMARK G209**  
BOSULLOW ERICA C085

BCC SHOCKIN' Y'ALL 1P  
**DAM: BCC BLACK VELVET 7T**  
BCC BLACK VELVET 22N

BW	92
205 Day Wt.	763
365 Day Wt.	1366

EPD	4.8
BW	42
WW	65
YW	9
MILK	30
TM	

Big and powerful sums it up. This Elmark son is from the daughter of Shockin' Y'All that was undefeated in the showing as a yearling heifer. She has gone on to produce sons for top cattlemen including Brad Tymkow, Clyde McCoy and Bob Brandl as well as a daughter sold to Steinley Farms, SK. Mark this bull as one of the top performance and maternal prospects available.



# Black Angus



*Dam: BCC Lady Ann 1U*

Lot  
★  
15Z

*BCC Elmo 15Z*

**BCC 15Z 1680854 15 JAN 2012**

BOSULLOW BLACKMARK E151  
**SIRE: BOSULLOW ELMARK G209**  
 BOSULLOW ERICA C085  
 PINE DRIVE BIG SKY  
**DAM: BCC LADY ANN 1U**  
 BCC LADY ANN 015

BW	205 Day Wt.	365 Day Wt.
85	787	1262

EPD	BW	WW	YW	MILK	TM
	3.2	34	48	10	27

Definitely a unique pedigree being an Elmark off a Pine Drive daughter. The Pine Drives are some of the most maternal females ever. Lady Ann 1U produced a son that sold two years ago to Ron & Trevor Kwasney for \$5000.

Lot  
★  
16Z

*BCC Elmark 16Z*

**BCC 16Z 1680855 16 JAN 2012**

BOSULLOW BLACKMARK E151  
**SIRE: BOSULLOW ELMARK G209**  
 BOSULLOW ERICA C085  
 BCC SHOCKIN' Y'ALL 1P  
**DAM: BCC LADY WREN 28T**  
 BCC LADY WREN 42N



BW	90
205 Day Wt.	776
365 Day Wt.	1302

EPD	4.0
BW	45
WW	68
YW	8
MILK	31
TM	

Another big powerful Elmark son. He is a maternal brother to bulls sold to Leonard and Doris Stewart for \$3800 and Uphill Feeders (Hansen's) for \$6800. We also have a sister retained in our herd.



*BCC Moonwalker 19Z*

**BCC 19Z 1680857 18 JAN 2012**

SAR SILVER PRAIRIE 173S  
**SIRE: BCC PRAIRIE MOON 55W**  
 BCC CLARICE 26K  
 BCC RIGHT WAY 19S  
**DAM: BCC BLACK VELVET 10U**  
 BCC BLACK VELVET 92S

BW	205 Day Wt.	365 Day Wt.
80	784	1270

E	BW	WW	YW	MILK	TM
P	2.5	25	46	24	37

A bull for your heifers with the power to use on your cows. Being a Prairie Moon son his pedigree combines the CAA ELITE female 26K on the top with the maternal Black Velvets. The 10U dam has an average weaning index of 112 on her first 3 calves. At that rate she will be destined for ELITE status herself. Here's a stud with as much depth and capacity as you will find.



*BCC Prairie Moon 22Z*

**BCC 22Z 1699284 20 JAN 2012**

We encourage you to take advantage of the livestock insurance that will be available sale day.

BW	72
205 Day Wt.	671
365 Day Wt.	1201

SAR SILVER PRAIRIE 173S  
**SIRE: BCC PRAIRIE MOON 55W**  
 BCC CLARICE 26K  
 BCC BIG DEAL 78S  
**DAM: BJ MISS BURGESS 14W**  
 BJ LADY ANN 29T



Canadian Farm  
Insurance Corp.

Monica Czech

Phone: (780) 732-8613  
 Fax: (780) 448-0281  
 Toll Free: 1-877-472-8678

Suite 375, 13220 St. Albert Trail • Edmonton, AB T5L 4W1  
 cfauque@cdnfarmins.com • www.cfiinsurance.ca  
**Commercial • Personal Lines • Farm • Livestock**

EPD	12.3
BW	56
WW	105
YW	24
MILK	21
TM	

Calving Ease bull that is very stout. The Big Deal sire was sold to Bob & Rose Brandl for a calving ease sire as well. A maternal brother sold last year to Doug & Cindy Kreuter for \$4600. Miss Burgess 14W is turning out to be an extremely nice female with plenty of depth, capacity and a beautiful udder in a medium sized package.

# Black Angus

Lot  
★  
27Z

## BCE Moon Rocket 27Z

BCC 27Z 1680861 22 JAN 2012

SAR SILVER PRAIRIE 173S

**SIRE: BCC PRAIRIE MOON 55W**

BCC CLARICE 26K

BCC BIG DEAL 78S

**DAM: BJ BLACK VELVET 6W**

BJ BLACK VELVET 33T

BW 82  
205 Day Wt. 676  
365 Day Wt. 1191

EPD  
BW 2.6  
WW 12  
YW 30  
MILK 20  
TM 26

Here's a heifer bull with carcass quality. This is a stout, strong topped thick quartered prospect. His dam is a deep bodied, easy fleshing young female with a bright future.



Lot  
★  
29Z

## BCE Eldorado 29Z

BCC 29Z 1680863 24 JAN 2012

BOSULLOW BLACKMARK E151

**SIRE: BOSULLOW ELMARK G209**

BOSULLOW ERICA C085

BCC DYNASTY 30L

**DAM: BCC LADY WREN 42N**

BCC LADY WREN 57K

BW 91  
205 Day Wt. 695  
365 Day Wt. 1166

EPD  
BW 4.4  
WW 29  
YW 49  
MILK 6  
TM 21

A long thick Elmark son from the CAA ELITE Lady Wren 42N. Maternal brothers include the \$5300 high seller to Fred and Rita van de Ligt as well as bulls to Barn Owl Angus and Eugene & Elaine Gingras.



*Dam: BCE Lady Wren 42N*

Lot  
★  
30Z

## BCE Elmer 30Z

BCC 30Z 1680864 25 JAN 2012

BOSULLOW BLACKMARK E151

**SIRE: BOSULLOW ELMARK G209**

BOSULLOW ERICA C085

CAMILLA BANDOLIER 85J

**DAM: BCC BLACK VELVET 12N**

BCC BLACK VELVET 46L

BW 90  
205 Day Wt. 786  
365 Day Wt. 1310

EPD  
BW 3.3  
WW 31  
YW 46  
MILK 2  
TM 18

Blending the old and the new. An Elmark from a dam sired by the old Camilla Bandolier bull that was famous in the 1970's. Maternal brothers have sold to Rick & Matty Graf, Gordon & Bev Hansen and Leonard & Doris Stewart. Moderate BW and excellent performance. These Elmark sons will add cutability and yield.



*Dam: BCE Black Velvet 12N*

Lot  
★  
34Z

## BCC Prairie Fire 34Z

BCC 34Z 1680866 28 JAN 2012

SAR SILVER PRAIRIE 173S

**SIRE: BCC PRAIRIE MOON 55W**

BCC CLARICE 26K

BCC HONKY TONK 21M

**DAM: BJ LADY WREN 28W**

BJ LADY WREN 12'99



BW **83**  
205 **775**  
Day Wt.  
365 **1260**  
Day Wt.

EPD  
BW **3.3**  
WW **23**  
YW **44**  
MILK **21**  
TM **33**

A low BW heifer bull combining Prairie Moon and Honky Tonk. The Honky Tonk daughters are really proving their worth being moderate sized good uddered females that are built for longevity.

Lot  
★  
38Z

## BCC Full Moon 38Z

BCC 38Z 1680869 29 JAN 2012

SAR SILVER PRAIRIE 173S

**SIRE: BCC PRAIRIE MOON 55W**

BCC CLARICE 26K

BJ MR BAROS 89T

**DAM: BCC TESSA 17W**

BCC TESSA 19F



BW **87**  
205 **694**  
Day Wt.  
365 **1214**  
Day Wt.

EPD  
BW **5.0**  
WW **10**  
YW **22**  
MILK **21**  
TM **26**

A moderate BW Prairie Moon x Mr Baros (Honky Tonk) combination and going back to the old Jack Daniels daughter 19F on the bottom of the pedigree. She produced until she was 16. Here's a bull with a wealth of maternal power and longevity built in.



Lot  
★  
42Z

## BCC Elmagifico 42Z

BCC 42Z 1680872 30 JAN 2012

BOSULLOW BLACKMARK E151

**SIRE: BOSULLOW ELMARK G209**

BOSULLOW ERICA C085

LAMBS OVERDRIVE 45E

**DAM: BCC MISS CASSIE 46M**

BJ MISS CASSIE 29'89



BW **88**  
205 **753**  
Day Wt.  
365 **1299**  
Day Wt.

EPD  
BW **3.6**  
WW **30**  
YW **44**  
MILK **5**  
TM **20**

If I was going to pick a bull to keep daughters off of this just might be the one. Excellent performance, length, depth, capacity and from a great old cow. 46M has been a stellar producer with sons selling to Clyde McCoy, Ben & Hendria Hospers and Brian Willett. We had to part with 46M after a stifle injury from a badger hole but not before we were able to flush embryos from her, so look forward to some full siblings next year.

# Black Angus

Lot  
★  
43Z

## BCC Impact 43Z

BCC 43Z 1680873 30 JAN 2012

EXARPAF 422

**SIRE: JUSTAMERE 422 ERIC 728W**

ENNS DIVERSITY'S ERICA 25P

BCC JOHNNIE WALKER 4U

**DAM: BCC BLACK VELVET 59X**

BCC BLACK VELVET 30S

BW	88
205 Day Wt.	758
365 Day Wt.	1234

EPD	
BW	4.1
WW	36
YW	60
MILK	16
TM	34

A heifers first calf with amazing depth, thickness and fleshing ability. The Justamere 422 Eric sire is a paternal brother to Justamere 422 Impact 244Y the 2012 Canadian Gold Show Junior Champion Bull. The 59X dam is sired by the Jack Daniels son of the ELITE 26K female. Johnny Walker 4U was a \$4700 bull to John, Tammy and Melissa LeBlanc at Sunset House, AB Muscle, Performance and Maternal Power right here!



Lot  
★  
49Z

## BCC Impact 49Z

BCC 49Z 1680876 1 FEB 2012

EXARPAF 422

**SIRE: JUSTAMERE 422 ERIC 728W**

ENNS DIVERSITY'S ERICA 25P

BCC PREMIUM EDITION 47U

**DAM: BCC MISS BURGESS 49X**

BCC MISS BURGESS 8U

BW	205 Day Wt.	365 Day Wt.
84	839	1503

EPD	BW	WW	YW	MILK	TM
	3.6	45	73	19	42

Yeah your reading that right - 1503 lbs for a 365 day wt, and with just an 84 lb BW! Now that's curve bending genetics. Did I mention this is a heifers first calf? The first year we used the Justamere bull we thought he was too much bull for heifers so we used him on cows. Once those long, smooth calves hit the ground we knew we needed to breed the heifers with him too. Our heifers weaned some of the heaviest calves this year!! With a weaning index of 115 and a 365 day index of 137 the future is bright for both this young bull and his dam. The dam is sired by Premium Edition the \$5000 sire to Wayne McNary in the 2011 sale. Stoke the fire with this guy!

Lot  
★  
54Z

## BCC Moonbeam 54Z

BCC 54Z 1680880 4 FEB 2012

SAR SILVER PRAIRIE 173S

**SIRE: BCC PRAIRIE MOON 55W**

BCC CLARICE 26K

BCC GREAT NORTHERN 45H

**DAM: BCC BLACK VELVET 18P**

BCC BLACK VELVET 43H



*Dam: BCC Black Velvet 18P*

BW 74  
205 Day Wt. 625  
365 Day Wt. 1050

EPD 2.4  
BW 9  
WW 9  
YW 21  
MILK 17  
TM 22

Nope he's not the biggest bull in the sale. He is however a ultra low BW bull with a small head and a great set of nuts. The 18P dam has consistently produced bulls that have made many heifers and bull customers very happy. Those would include Ken & Joanne Kaliel, Frank Homa, and Kwasney Farms. A daughter of 18P also resides at Leif Brost's Hawkeye Ranching, Cypress County, AB

Lot  
★  
58Z

## BCC Elway 58Z

BCC 58Z 1680883 4 FEB 2012

BOSULLOW BLACKMARK E151

**SIRE: BOSULLOW ELMARK G209**

BOSULLOW ERICA C085

DMM DYNASTY 03G

**DAM: BCC BLACK VELVET 27U**

BCC BLACK VELVET 52H



*Dam: BCC Black Velvet 27U*

BW 98  
205 Day Wt. 770  
365 Day Wt. 1279

EPD 6.0  
BW 35  
WW 52  
YW 12  
MILK 30  
TM 30

Powerful Elmark son from a bid deep strong uddered Dynasty daughter. The 27U dam is also a daughter of one of the greatest Jack Daniels daughters ever. 52H is a CAA ELITE Female

Lot  
★  
63Z

## BCC Foresight 63Z

BCC 63Z 1701704 7 FEB 2012

PAPA FORTE 1921

**SIRE: WOODHILL FORESIGHT**

BON VIEW GAMMER 85

LANDMARK NEW FRONTIER

**DAM: PJ'S LYNN 31'97**

LYNN OF LARKSPUR 8W



*Dam: PJ's Lynn 31'97*

BW 92  
205 Day Wt. 718  
365 Day Wt. 1188

EPD 5.3  
BW 47  
WW 85  
YW 28  
MILK -  
TM -

An embryo transplant son of the immortal PJ's Lynn 31'97. She was known as the chicken for the way she produced eggs in our embryo program, averaging over 30 embryos per flush. Her progeny can be found across North America and Europe. This bull is a full brother to the two fundraising heifers that raised nearly \$11 000 for the Canadian Angus Foundation and the Canadian Junior Angus Assn. They resulted from embryos we donated to the foundation in 2009. Foresight x Lynn 31'97 is a guaranteed maternal treasure.

# Black Angus

Lot  
★  
67Z

## BCC Prairie Storm 67Z

BCC 67Z 1680889 8 FEB 2012

SAR SILVER PRAIRIE 173S

SIRE: BCC PRAIRIE MOON 55W

BCC CLARICE 26K

BCC SPECIAL EDITION 36R

DAM: BCC LADY WREN 56U

BCC LADY WREN 2S

BW 89  
205 Day Wt. 750  
365 Day Wt. 1177

EPD  
BW 3.7  
WW 21  
YW 37  
MILK 23  
TM 34

56U is one of those cows that always raises a real good one. She has an average weaning index of 109 on 3 calves. Her bull in last years sale sold to Clyde McCoy, and she has a daughter that was the high selling bred heifer in th the Canadian Legacy sale To Demund Rasmussen, Radville,SK.



Lot  
★  
68Z

## BCC Impact 68Z

BCC 68Z 1680890 8 FEB 2012

EXARPAF 422

SIRE: JUSTAMERE 422 ERIC 728W

ENNS DIVERSITY'S ERICA 25P

SOUTHOLM ACCUTRON

DAM: BCC MISS BLOSSOM 13X

BCC MISS BLOSSOM 43N

BW 74  
205 Day Wt. 804  
365 Day Wt. 1293

EPD  
BW 2.0  
WW 32  
YW 59  
MILK 16  
TM 32

Ultra low BW and outstanding performance. Another growth curve bender sired by Eric. The dam is a first calver sired by Accutron who is noted for calving ease, good feet and udders. Several Accutron daughters are ELITE females and they produce well into their teens.



Lot  
★  
70Z

## BCC Foresight 70Z

BCC 70Z 1701705 9 FEB 2012

PAPA FORTE 1921

SIRE: WOODHILL FORESIGHT

BON VIEW GAMMER 85

LANDMARK NEW FRONTIER

DAM: PJ'S LYNN 31'97

LYNN OF LARKSPUR 8W

BW 104  
205 Day Wt. 822  
365 Day Wt. 1321

EPD  
BW 5.3  
WW 47  
YW 85  
MILK 28  
TM -

Another ET calf from the Foresight x Lynn flush. This is a full sibling to Lot 63Z. Foresight sons are noted for their fertility, carcass quality, and maternal strength. PJ's Lynn 31'97 sold to Blairs.Ag at Lanigan, SK This bull has a little more BW but look at the outstanding performance and his milk numbers are in the top 4% of the breed!







## BCE Prairie Thunder 79Z

BCC 79Z 1680893 12 FEB 2012

SAR SILVER PRAIRIE 173S

**SIRE: BCC PRAIRIE MOON 55W**

BCC CLARICE 26K

BCC HONKY TONK 21M

**DAM: BJ BLACKBIRD 27T**

BJ BLACKBIRD 10'97

BW **93**  
205 Day Wt. **742**  
365 Day Wt. **1207**

EPD **4.7**  
BW **19**  
WW **38**  
YW **17**  
MILK **27**  
TM

The Prairie Moon x Honky Tonk combination does a real nice job. As it should with both of those sires being out of ELITE females. 27T's son from last year bred heifers for John Tymko at Jarvie.



## BCE Impact 81Z

BCC 81Z 1680895 12 FEB 2012

EXARPAF 422

**SIRE: JUSTAMERE 422 ERIC 728W**

ENNS DIVERSITY'S ERICA 25P

SOUTHOLM ACCUTRON

**DAM: BCC MISS BURGESS 23X**

BCC MISS BURGESS 22M

BW **89**  
205 Day Wt. **830**  
365 Day Wt. **1299**

EPD **3.5**  
BW **31**  
WW **53**  
YW **19**  
MILK **35**  
TM

A 3/4 brother to Lot 68Z. I wouldn't be scared to use any of these Eric bulls on heifers. This bull himself is a heifers first calf and look at that performance with a weaning index of 113. Miss Burgess 22M is recognized by the Canadian Angus Assn as an ELITE female with 9 calves at an average index of 106.



## BCE Prairie Moon 93Z

BCCK 93Z 1699285 18 FEB 2012

SAR SILVER PRAIRIE 173S

**SIRE: BCC PRAIRIE MOON 55W**

BCC CLARICE 26K

DOUBLE D QUANTUM 4R

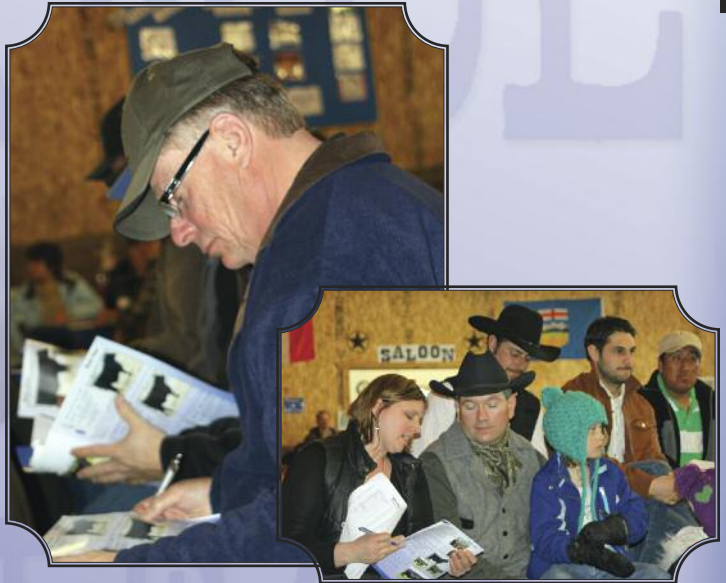
**DAM: DWAJO PRIDE 95U**

DWAJO PRIDE 8N

BW **90**  
205 Day Wt. **614**  
365 Day Wt. **1099**

EPD **3.9**  
BW **16**  
WW **39**  
YW **16**  
MILK **-**  
TM

This is a son of Kailey's cow that she purchased as a heifer calf from Dwajo Angus at Barrhead. The Quantum sire saw heavy use in their herd and his daughters continue to be very functional females. A maternal brother to 93Z sold to Trevor & Christy Lebsack at Slave Lake.



## BCE Prairie Sky 97Z

BCC 97Z 1680899 21 FEB 2012

SAR SILVER PRAIRIE 173S

**SIRE: BCC PRAIRIE MOON 55W**

BCC CLARICE 26K

BCC EILEENMERE LAD 17F

**DAM: BCC BLACK VELVET 33N**

BCC BLACK VELVET 8J

BW **88**  
205 Day Wt. **755**  
365 Day Wt. **1214**

EPD **4.4**  
BW **20**  
WW **45**  
YW **19**  
MILK **29**  
TM

A moderate BW Prairie Moon son from a dam with a huge amount of volume and a strong udder. Maternal brothers have sold to Fred & Rita van de Ligt and John & Tammy LeBlanc. The 8J grand dam is an ELITE female.



*Dam: BCE Black Velvet 33N*

# Black Angus



## BCC Moon and Stars 98Z

BCC 98Z 1680900 21 FEB 2012

SAR SILVER PRAIRIE 173S

SIRE: BCC PRAIRIE MOON 55W

BCC CLARICE 26K

BCC GREAT NORTHERN 45H

DAM: BCC MISS BURGESS 45L

BCC MISS BURGESS 13G

BW 93  
205 Day Wt. 676  
365 Day Wt. 1103

EPD BW 5.8  
WW 11  
YW 25  
MILK 19  
TM 25

If there was an award for the cow with the most heart and soul this bulls dam would win it hands down. She wrecked her stifle a few years back and continued breeding back regularly and weaning an above average calf. We finally had to put her down after weaning this calf. She produced sons to Ross & Beau Lyons, Barn Owl Angus, and 2 to Jay & Robin Booth.



## BCC Epic 104Z

BCCK 104Z 1680919 25 FEB 2012

EXARPAF 422

SIRE: JUSTAMERE 422 ERIC 728W

ENNS DIVERSITY'S ERICA BCC

JOHNNIE WALKER 4U

DAM: BCC ISABELLE 60X

BCC LYNN 108S

BW 74  
205 Day Wt. 743  
365 Day Wt. 1174

EPD BW +0.5  
WW 26  
YW 44  
MILK 15  
TM -

A low BW Eric son from a first calf heifer that is a daughter of the \$4700 Johnnie Walker bull sold to LeBlanc's. The 60X dam comes from the Lynn family and has both of her grand dams with ELITE status. This bull is consigned by Kailey. She previously sold a son of the 108S grand dam to Trevor & Kristy Lebsack.



## BCC Black Moon 108Z

BCC 108Z 1680904 29 FEB 2012

SAR SILVER PRAIRIE 173S

SIRE: BCC PRAIRIE MOON 55W

BCC CLARICE 26K

LAMBS OVERDRIVE 45E

DAM: BCC BLACK VELVET 22N

BCC BLACK VELVET 11H

BW 98  
205 Day Wt. 628  
365 Day Wt. 1170

EPD BW 6.4  
WW 6  
YW 22  
MILK 18  
TM 21

This bull will just be a year old by sale time but he is the fourth highest gaining bull on feed at 3.4 lb/day with an index of 112. He is a solidly built prospect that stands on a great foundation. His dam is an ELITE female and sons have sold to Paul & Lorraine Boulerville, Lyle Hogarth, and Clyde McCoy.



## BCC Moon River 113Z

BCC 113Z 1680838 4 MAR 2012

SAR SILVER PRAIRIE 173S

SIRE: BCC PRAIRIE MOON 55W

BCC CLARICE 26K

BJ MR BAROS 89T

DAM: BCC GEORGIA 51W

BCC GEORGINA 15K

BW 103  
205 Day Wt. 751  
365 Day Wt. 1209

EPD BW 7.9  
WW 16  
YW 32  
MILK 21  
TM 29

A 3/4 brother to Lot 38Z. These Prairie Moon x Mr Baros bulls have a lot of maternal power bred into them. Georgina 15K is an ELITE female and has sons that have worked for Ward Allen, Ken Kaliel, Lorne Koch, and Dave van de Ligt.



## SCAR'S Tiger 2Z

FW 2Z 1693792 1 APRIL 2012

HF TIGER 5T

SIRE: RING CREEK TIGER KING 30W

RING CREEK 142P LADY 49T

CAJUN SAUGAHATCHEE 4L

DAM: SCAR BETTY 9P

SCAR BETTY 4M

BW 82  
205 Day Wt. 816  
365 Day Wt. 1260

EPD BW 3.6  
WW 37  
YW 76  
MILK 18  
TM 37

We had the opportunity to purchase a group of calves from Guy Belanger at Smith, all sired by Tiger King. Originally we were not going to put any of them in the sale but sell them privately later on mostly because of their younger age, but everyone needs to see a couple of these. Note the low BW and the explosive 205 day wt.

Lot  
★  
306Z

## SCAR'S Tiger 6Z

FW 6Z 1693797 9 APRIL 2012

HF TIGER 5T

**SIRE: RING CREEK TIGER KING 30W**

RING CREEK 142P LADY 49T

RING CREEK BPC KING 25R

**DAM: SCAR'S DARK STAR 8U**

PJ'S DARK STAR 45'98



BW **82**  
205 Day Wt. **842**  
365 Day Wt. **1271**

EPD **3.6**  
BW **42**  
WW **87**  
YW **24**  
MILK **45**  
TM

An early April bull with a low BW and an incredible 842 weaning wt. The Tiger King sire is an own son of the many times champion HF Tiger. Tiger King ranked 1/47 for yearling weight in his calf crop at Ring Creek Farms. Don't miss this meat machine x calving specialist because of his age. By breeding season he will be all that and more!

## Brandl Cattle Company Red Angus Reference Sires

### Ref Sire *Red Brylor Mak'n Hay 31X*

★  
Hay

RED BIEBER MAKE MIMI 7249

**SIRE: RED BIEBER MAKIN HAY 9913**

RED BIEBER ADELLE 8958

RED FINE LINE MULBERRY 26P

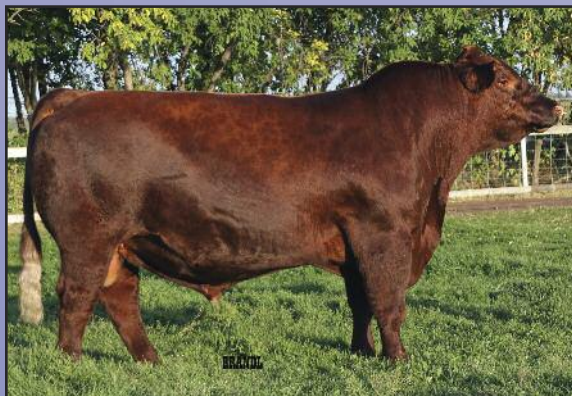
**DAM: RED FRASER POTEET 803U**

RED FRASER POTEET 612S

BW **83**  
205 Day Wt. **812**  
365 Day Wt. **1221**



-\$12 000 purchase from 2011 Brylor Ranch Bull Sale  
-Paternal Brother to \$47 500 1/3 interest Red Brylor WRAZ Mak'n Waves 39X  
-Maternal Brother to \$25 000 Red Brylor Arson 55Y High Selling Bull at Brylor Ranches 2012 Sale  
Calving ease sire with depth of body, performance and fleshing ability. Possibly the most consistent red sire group ever at Brandl Cattle Co.



### Ref Sire *Red BCC Emperor 54W*

★  
Emperor

RED COMPASS MULBERRY 449M

**SIRE: RED FINE LINE MULBERRY 26P**

RED DUS FAYETTE 8G

RED BADLANDS BONUS 702

**DAM: RED JSF CHEROK 15M**

RED JSF CHEROK 19J

BW **93**  
205 Day Wt. **737**  
365 Day Wt. **1345**

- High Selling Bull 2011 to Jason and Trisha French at \$6900 for 2/3 interest
- Extreme depth and thickness with a powerful foot
- Sires tremendous muscle and performance-
- First daughters in production have excellent udders



## R&D BCC Emperor 1Z

BCC 1Z 1680843 1 JAN 2012

RED FINE LINE MULBERRY 26P

SIRE: RED BCC EMPEROR 54W

RED JSF CHEROK 15M

RED SSS BEDROCK 68H

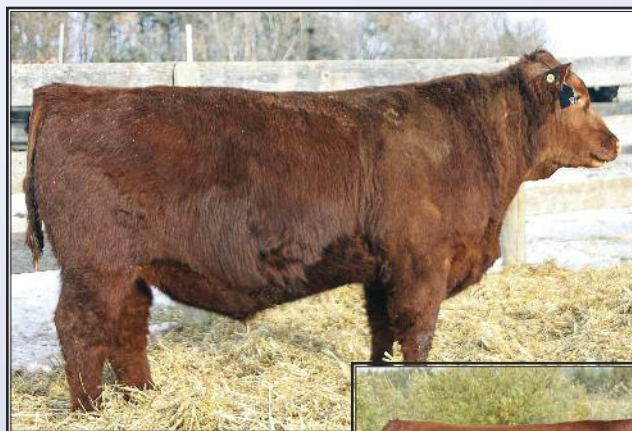
DAM: RED CRIPPS MAXINE 821U

RED SSS MAXINE 556F

BW 82  
205 Day Wt. 708  
365 Day Wt. 1312

EPD  
BW -0.1  
WW 49  
YW 77  
MILK 25  
TM 50

Might as well lead off the red division with a really good one! Low BW, great performance, muscle, capacity, from a great cow. Oh yeah that's our plan here - Calving Ease, Muscle, Performance & Maternal Power! This is a full brother to the bull that sold for \$5000 to Fred & Rita van de Ligt last year. Only difference is this bull is 10 lbs lighter at birth and 128 lbs heavier at a year! The other good news - the first Emperor daughters are now in production and wow are they going to make deep easy fleshing cows with great udders and feet.



Dam: Red Cripps  
Maxine 821U



## R&D BCC Stallion 9Z

BCC 9Z 1680849 10 FEB 2012

RED BHC SANDSTONE

SIRE: RED BRYLOR STALLION 19J

RED PTTV COUNTESS 13'97

RED SSS KA-BOOM 818G

DAM: RED FINE LINE TAMMY 62K

RED FINE LINE TAMMY 2F

BW 87  
205 Day Wt. 785  
365 Day Wt. 1268

EPD  
BW 3.2  
WW 56  
YW 89  
MILK 7  
TM 35

In 2007 at the Fineline Dispersal I asked Nick Van Gaalen which was his most consistent cow at producing quality commercial bulls. I'm sure happy with his suggestion. Prior to coming to our place she had already produced 4 top bulls, and for us she has produced one to Charles & Berenice Grabler, Bill & BarbMcCarthur and now 9Z. The best part is that at 13 years of age she's got more gas in the tank yet. Over the course Stallions have been some of the soundest, most productive cattle out there.



Dam: Red Fine Line Tammy 62K



## R&D BCC Emperor 17Z

BCC 17Z 1680856 16 JAN 2012

RED FINE LINE MULBERRY 26P

SIRE: RED BCC EMPEROR 54W

RED JSF CHEROK 15M

RED PERKS CHATEAU 309R

DAM: RED WILLOW CREEK ZAMIE 304U

RED WILLOW CREEK ZAMIE 122N

BW 78  
205 Day Wt. 621  
365 Day Wt. 1111

EPD  
BW -1.1  
WW 51  
YW 82  
MILK 19  
TM 44

Your heifers need this bull with a negative birth EPD. The 304U dam is a very well made, moderate sized female with a great disposition. A maternal brother sold to Gerald and Laura Minekus at Rich Valley.



## R&D BCC Makin' Money 18Z

BCC 18Z 1701706 16 JAN 2012

RED BIEBER MAKIN HAY 9913

SIRE: RED BRYLOR MAK'N HAY 31X

RED FRASER POTEET 803U RED

BRYLOR ULTIMATUM 223U

DAM: RED BCC LADY 113X

RED T-S LADY 154L

BW 76  
205 Day Wt. 726  
365 Day Wt. 1175

EPD  
BW 0.3  
WW 54  
YW 86  
MILK 26  
TM 53

A heifers first calf by Makin' Hay. The Makin' Hay sons are all smooth, easy fleshing bulls with a little more depth. 18Z has calving ease as well as ranking in the top 2% of all Red Angus for milk and maternal numbers



*R&D BCC Makin' Change 32Z*

**BCC 32Z 1701708 26 JAN 2012**

RED BIEBER MAKIN HAY 9913

**SIRE: RED BRYLOR MAK'N HAY 31X**

RED FRASER POTEET 803U

RED BRYLOR ULTIMATUM 223U

**DAM: RED BCC STORM 61X**

RED FINE LINE STORM 10R



BW	74
205 Day Wt.	785
365 Day Wt.	1297

EPD	0
BW	0
WW	56
YW	90
MILK	27
TM	55

Check this out. Lot 32Z is a 3/4 brother to Lot 18Z and 65Z. The first calving Ultimatum daughters are all very productive young females with a lot of capacity. Calving Ease, Maternal, and Performance all wrapped up in a very neat package. This young bull ranked 4th at weaning with a 114 index and 2nd on feed gain with an ADG of 3.2 lbs/day



*R&D BCC Stout 36Z*

**BCC 36Z 1680867 28 JAN 2012**

RED LAZY MC STOUT 30S

**SIRE: RED DIAMOND T HIPS STOUT 107U**

RED TOWAW MONIQUE 2K

RED BRYLOR NEW TREND 22D

**DAM: RED BCC RENEE 60T**

RED THAT'LL DO RENEE 683H



BW	81
205 Day Wt.	703
365 Day Wt.	1212

EPD	-0.4
BW	-0.4
WW	41
YW	54
MILK	25
TM	45

Talk about a young bull with a bright future! Low BW, excellent performance, volume, muscle, style and a great pedigree. Sired by the great breeding Stout bull that sold in the Mile High Classic Sale for \$39 000. The dam is none other than a New Trend daughter from our old faithful 683H cow. She is the dam of Panama 69P who continues to be one of the top sires for Teron Red Angus at Forestburg, AB



*Dam of Lot 17*

*: Red Willow Creek Zamie 304U*



*R&D BCC Harvest Moon 45Z*

**BCC 45Z 1680874 31 JAN 2012**

SAR SILVER PRAIRIE 173S

**SIRE: BCC PRAIRIE MOON 55W**

BCC CLARICE 26K

SAR SILVER PRAIRIE 173S

**DAM: BCC MISS BURGESS 78W**

BCC MISS BURGESS 22M

BW	87
205 Day Wt.	712
365 Day Wt.	1101

EPD	3.6
BW	3.6
WW	42
YW	71
MILK	32
TM	53

Outcross Red Genetics! Knowing that Silver Prairie had a red gene we decided to double up on him and it worked. A red calf with an entire black pedigree. Used on red cows this bull will breed 100% red. He ranks in the top 1% of the breed for milk and has both 26K and 22M as ELITE females in his pedigree, not to mention Eileenmere Lad 17F that lit up the scoreboard for performance and carcass data in the UK.

# Red Angus



*Dam: RED BCC Annie 69W*

Lot  
★  
47Z

## RED BCC Makin' Whoopee 47Z

BCC 47Z 1701710 1 FEB 2012

RED BIEBER MAKIN HAY 9913  
SIRE: RED BRYLOR MAK'N HAY 31X  
RED FRASER POTEET 803U

RED FINE LINE MULBERRY 26P  
DAM: RED BCC ANNIE 69W  
RED JD LANN ANNIE 202P

BW	205 Day Wt.	365 Day Wt.
84	850	1269

EPD	BW	WW	YW	MILK	TM
	0.7	72	116	24	60

WOW does not begin to explain this calf! For those interested in numbers just take a good look. Weaning, Yearling and Total Maternal EPD's in the top 1% of the breed, as well as carcass weight top 1% and yield grade top 2%. A low birth weight and a weaning index of 122. I'll say it again...WOW! Now look at the bull with his strong foot and leg structure, depth, smoothness, style and off of an awesome Mulberry daughter whose own dam is an ELITE female. When you combine all this with the fact that he is sired by our \$12 000 Mak'n Hay herdsire whose 3/4 brother is the 2012 National Western Reserve Junior Champion Bull who sold for \$47 500 for 1/3 interest and Mak'n Hays younger maternal brother topped the 2012 Brylor sale at \$25 000 and I'd dare say this is one of the premium Red Angus bulls that will sell this spring!

Lot  
★  
53Z

## RED BCC Makin' Cash 53Z

BCC 53Z 1701711 4 FEB 2012

RED BIEBER MAKIN HAY 9913  
SIRE: RED BRYLOR MAK'N HAY 31X  
RED FRASER POTEET 803U

RED ZAMA PINE 517G  
DAM: RED BRYLOR DVSF CHARITY 414L  
RED BRYLOR CHARITY 1D



*Dam: Red Brylor DVSF Charity 414L*

BW	85
205 Day Wt.	705
365 Day Wt.	1158

EPD	
BW	2.4
WW	46
YW	74
MILK	23
TM	46

Here's something that not many people will know - This bull is a brother to the dam of Red Brylor Big Rock 85T that sold for \$85 000 for 2/3 interest! Yes, our very own 414L is Big Rock's grandmother. This is a very well put together bull that will leave you an awesome set of daughters. A maternal brother to 53Z sold to Trevor & Kristy Lebsack



## R&D BCC Makin' Memories 65Z

BCC 65Z 1701712 8 FEB 2012

RED BIEBER MAKIN HAY 9913

SIRE: RED BRYLOR MAK'N HAY 31X

RED FRASER POTEET 803U

RED BRYLOR ULTIMATUM 223U

DAM: RED BCC FIREFLY 89X

RED SNOWY RIVER FIREFLY 143L

BW	85
205 Day Wt.	705
365 Day Wt.	1175

EPD	1.8
BW	52
WW	82
YW	23
MILK	49
TM	

65Z is a 3/4 brother to both 18Z and 32Z. The Mak'n Hay and Ultimatum combination worked every time. Moderate BW with very good performance. Maternal Power bred in from both sire and dam. The 143L grand dam has been a solid producer with sons working for Colby Hansen as well as Lena Ricci.



## R&D BCC Makin' Steak 76Z

BCC 76Z 1712573 10 FEB 2012

RED BIEBER MAKIN HAY 9913

SIRE: RED BRYLOR MAK'N HAY 31X

RED FRASER POTEET 803U

RED BUF CRK CHF 824-1658

DAM: RED BCR SCAARA 10N

RED MISS SCAARA 531E

BW	102
205 Day Wt.	817
365 Day Wt.	1298

EPD	2.6
BW	62
WW	98
YW	25
MILK	55
TM	

Here's a young bull that pushes the scales down. He ranked #3 at weaning with a 114 index. The 10N dam has an average weaning index of 111. A maternal brother sold last year to Keith & Colette Conquergood for \$5200 and a really good daughter sold to Dinant Red Angus at Camrose.



## R&D BCC Makin' Magic 83Z

BCC 83Z 1701718 13 FEB 2012

RED BIEBER MAKIN HAY 9913

SIRE: RED BRYLOR MAK'N HAY 31X

RED FRASER POTEET 803U

RED FINE LINE MULBERRY 26P

DAM: RED BCC VIDALIA 106X

RED BRYLOR VIDALIA 140M

BW	205 Day Wt.	365 Day Wt.
78	732	1227

EPD	BW	WW	YW	MILK	TM
0.4	57	95	23	52	

This bulls dam is one of my favorite two year olds. She's a Mulberry daughter off of our old Dynamo cow. Not only that she's a Dynamo off of none other that New Trends dam! For pedigree buffs this is a very impressive lineage. From top to bottom Mak'n Hay has done a great job for us. They are all long, smooth, deep. good haired and structurally sound. Another guaranteed calving ease bull here.

Lot  
★  
84Z

## R&D BEE Makin' it Work 84Z

BCC 84Z 1701719 13 FEB 2012

RED BIEBER MAKIN HAY 9913  
SIRE: RED BRYLOR MAK'N HAY 31X  
RED FRASER POTEET 803U

RED THAT'LL DO FUSION 26F  
DAM: RED THAT'LL DO RENEE 683H  
RED THAT'LL DO RENEE 57A

BW 98  
205 Day Wt. 756  
365 Day Wt. 1248

EPD  
BW 2.2  
WW 46  
YW 67  
MILK 22  
TM 45

I have a hard time to believe this bulls mother is 15 this year. She is still as youthful as most 5 year old cows around the country. I know she still has a better udder and feet than the majority of cows in the business. She still weaned this calf at a 104 index at 14 years. Maternal brothers are working for Steve & Valerie Breitreutz, Ross & Beau Lyons and also a herd bull still doing a tremendous job at Ter-ron Red Angus at Forestburg.



Dam: Red That'll Do Renee 683H

Lot  
★  
89Z

## R&D BEE Makin' Believe 89Z

BCC 89Z 1701721 16 FEB 2012

RED BIEBER MAKIN HAY 9913  
SIRE: RED BRYLOR MAK'N HAY 31X  
RED FRASER POTEET 803U

RED LAMB'S CURNT VALUE MANN 4L  
DAM: RED BRYLOR ELLE CHEROK 83P  
RED BRYLOR CHEROK 22L

BW 78  
205 Day Wt. 665  
365 Day Wt. 1121

EPD  
BW -0.7  
WW 43  
YW 68  
MILK 25  
TM 47

Yet another excellent calving ease bull sired by Mak'n Hay. This one also comes with a royal heritage. His mother is a sister to the 2010 Denver National Western Stock Show Reserve Grand Champion Female both being daughters of Red Brylor Cherok 22L. 83P also produced an awesome bull that sold to Chris Fauque. In fact he is the sire of Kailey's 4-H steer.



Grand Dam:  
Red Brylor  
Cherok 22L



Lot  
★  
95Z

## R&D BEE New Moon 95Z

BCC 95Z 1680898 20 FEB 2012

SAR SILVER PRAIRIE 173S  
SIRE: BCC PRAIRIE MOON 55W  
BCC CLARICE 26K

CAMILLA BANDOLIER 85J  
DAM: BCC BLACK VELVET 3N  
BCC BLACK VELVET 234

BW 79  
205 Day Wt. 683  
365 Day Wt. 1114

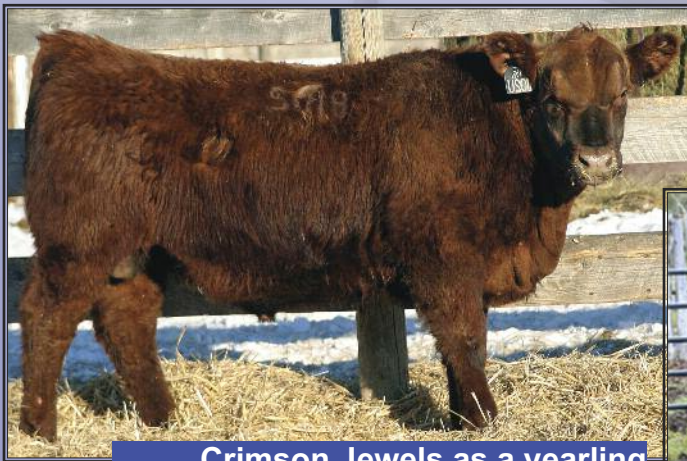
EPD  
BW 2.7  
WW 33  
YW 59  
MILK 27  
TM 44

Outcross Red Genetics. We learned a few years back that the old Camilla Bandolier 85J bull had a red gene. In 2007 we sold a red Bandolier daughter at Red Roundup for \$14 750. Knowing as well that Silver Prairie had a red gene we gave this mating a try. A red bull from two black parents. Used on red cows he will produce red calves. This bull is a maternal brother to the "Blackberry" bull we sold to Eugene and Elaine Gingras. He was the sire of Kailey's 4-H steer last year.





## Value for Your Dollar

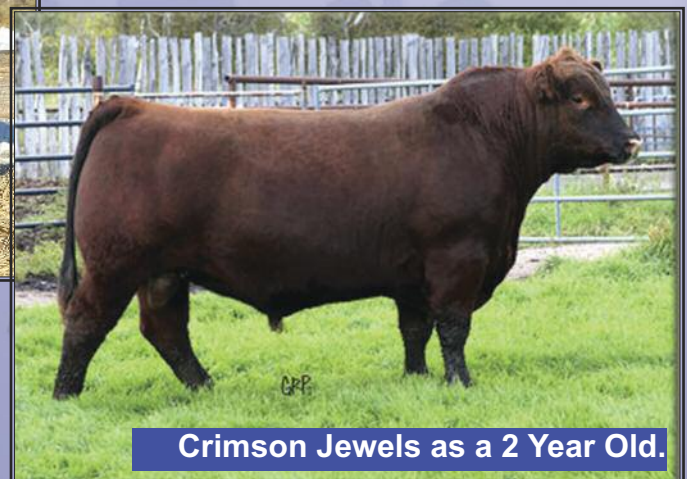


**Crimson Jewels as a yearling**

## The ROI Story Of Crimson Jewels

A large part of this business is all about your Return On Investment (ROI). At Brandl Cattle Co. we do not believe in over feeding our bulls. They are grown out modestly so that they perform for you and last many years. We also do not have a crew or the time to primp and fluff all of the bulls for photo day or for the sale. The bulls come to you in a pretty natural form. With that said there are many diamonds in the rough that can be found here.

A prime example of great ROI is Red BCC Crimson Jewels 102U. He sold as a yearling in our 2009 Sale to Brownalta Angus for \$2700. As a two year old he was purchased by Bryan MacKenzie and then he sold a 1/3 interest in the 2010 Masterpiece Sale for \$12 000. Crimson Jewels has gone on to become one of the leading AI sires in the Brylor Semen Sales lineup with offspring across North America and Australia. Last fall Three Fires Ranch, KS and Brylor Ranch sold a heifer calf sired by Red BCC Crimson Jewels 102U in the Under The Influence Sale in Kansas for \$27 500. That's some serious ROI !!! Crimson Jewels is now owned by Brylor Ranch and WRAZ Red Angus, Wawota, SK.



**Crimson Jewels as a 2 Year Old.**

# Welcome from Lake Bottom Cattle Co.

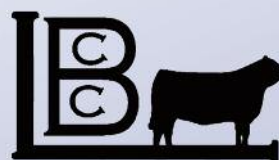
So many places to begin with our Thanks. Firstly to Byron, Gwen, their family and Brandl Cattle Company for inviting us to be a part of their amazing sale, and all of it's aspects. Their commitment to the Angus industry and their community makes it our honor to be a part of this annual event they have had for over 10 years. Our congratulations to them in achieving this milestone.

Then to extend our thanks to the Simmental industry producers and the tremendous breeders who have made it so much fun and welcoming for us. Our beginning with Simmental began with a lone 4-H fleck heifer project of our oldest daughter Ashton from our good friends at Lonesome Willow Simmentals – John & Lois Malysh. As years went by our focus expanded to becoming more involved with the purebreds - going to sales, going through sale catalogues, reading up on the pedigrees, and slowly making our choices and picks of who we wanted have in our lines.

Those choices and picks have brought us to a point where we have a solid group of cattle that we are very proud of, but yet strict with as well. As much as we love all our animals, they have to meet some very tight guidelines. The past few years we have had some great success with our female and male products – heifers, breds, and bulls. We have been very pleased with our off-farm and consignment sales over the years. For that we extend a very warm Thank You to our past buyers for their support and invite them to join us at this sale to share in our excitement and accept our personal Thanks. As well, to look at what we have to offer for the 2013 Bull year.

Bringing the selections we have to Stoke the Fire is very exciting for us. We ask our cattle to work for us and they have. They've proven for us each year that they can raise those strong, long, sturdy and productive offspring that strive in the cattle industry. They have what it takes for the purebred breeder as well as the commercial producer.

So, on behalf of our family and Lake Bottom Cattle, welcome to our farm; welcome to the Sale; and most of all, our best wishes for continued success of the improving cattle industry in Alberta.



**Barrie, Colleen  
& Dacie  
Przekop**

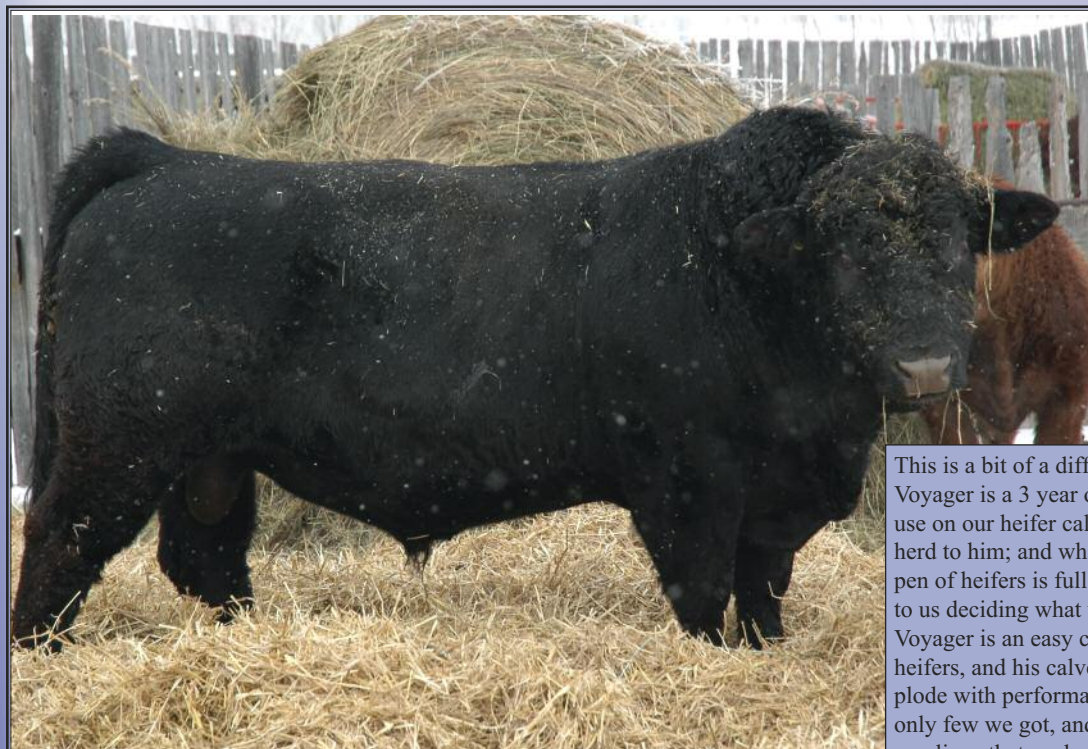
LAKE BOTTOM CATTLE CO

Box 42 • Smoky Lake, AB  
T0A 3C0

Barrie Cell: 780-656-5466

Dacie Cell: 780-656-5513

Email: lakebottom\_cattle@yahoo.ca



This is a bit of a different offering here from us being that Voyager is a 3 year old bull. We originally bought Voyager to use on our heifer calves, and ended up breeding half of the herd to him; and what did we get? Heifers. Our replacement pen of heifers is full of Voyager daughters. So it came down to us deciding what were are to do with him; so here he is. Voyager is an easy calving bull, would be great to breed to heifers, and his calves are born hairy, unassisted, and they explode with performance. There are his sons in the sale, the only few we got, and we are very proud with the outcome. His yearlings that we have are outstanding, and we are excited to be offering some of his offspring in the future.

Lot  
★  
25X

*Skors Voyager 25X*

ETZ 25X BPG737767 3 JAN 2010

BW	205 Day Wt.	365 Day Wt.	E	CE	BW	WW	YW	MCE	MWW	MILK
89	849	1463	P	10.6	-0.2	26.7	52.3	5.0	17.4	4.0

SVJ POWER SURGE  
SIRE: WESTFALL VOYAGER 721P  
DRAKE SUMMER SISTER

CNS DREAM ON L186  
DAM: SKORS BLACK DIXIE 19U  
SKORS MS RESSES 100S



*LBCC Yes Man 20Y*

**LBCC 20Y 764612 4 JAN 2011**

TNT TOP GUN R244

**SIRE: CMS UNIQUE 853U**

CMS RED ROBIN 07N

MARK'S MR TARA-BULL 124S

**DAM: LBCC WHATA DOLL 910W**

MARKS MISS BLACK DOLL 90T

BW	<b>80</b>
205 Day Wt.	
365 Day Wt.	

EPD	
CE	<b>3.7</b>
BW	<b>2.3</b>
WW	<b>29.5</b>
YW	<b>54.7</b>
MCE	<b>2.0</b>
MWW	<b>13.1</b>
MILK	<b>-1.6</b>

Yes Man is a pretty exciting black bull. He comes from our "Doll" line of cows and they always produce a calf that is impressive. Yes Man is long and stout made, bringing a very smooth front end with him. He is going to bring heifer calves that will stay in the keeper pen, and bulls that will bring muscle to the table.



*LBCC Yuk-A-Flux 32Y*

**LBCC 32Y 764477 24 JAN 2011**

TNT TOP GUN R244

**SIRE: CMS UNIQUE 853U**

CMS RED ROBIN 07N

LFE HIGH VOLTAGE 822L

**DAM: MMP ROCK STEADY 41R**

MMP TRICK PONY 41M

BW	205 Day Wt.	365 Day Wt.	EPD	CE	BW	WW	YW	MCE	MWW	MILK
<b>95</b>	<b>950</b>		<b>5.6</b>	<b>3.1</b>	<b>42.7</b>	<b>77.7</b>	<b>2.5</b>	<b>19.7</b>	<b>-1.7</b>	

Yuk-A-Flux is the most powerful red two-year old that we have on offer. This bull is going to go out and cover cows. His mother, who is also the dam of LBCC Sharp Dressed Man99Z, is a cow that adds muscle, depth, length, and style to all of her bull calves. They have a natural power and the potential to throw some chrome on to their calves.

# Simmental 2 Year Olds

Lot  
★  
43Y

## LBCC Yahtzee 43Y

LBCC 43Y APPLIED 10 FEB 2011

TNT TOP GUN R244

SIRE: CMS UNIQUE 853U

CMS RED ROBIN 07N

TH BLACK BOOMER 10P

DAM: MOES BLACK MAI TAI 200T

BUTE MS PATSY 20P

BW 88  
205  
Day Wt.  
365  
Day Wt.

EPD  
CE -  
BW -  
WW -  
YW -  
MCE -  
MWW -  
MILK -

Yahtzee was an eye-catching bull right from when he was a yearling. He has really filled out nicely and has a lot of length. He has a good smooth front end, and is very complete. His full brother is also selling in the sale in the yearling section, Mai Tai has been a cow that we have counted on year after year to produce us some great bull calves, and this bull is another one we are proud to offer.



Lot  
★  
48Y

## LBCC Bull 48Y

LBCC 48Y APPLIED 16 FEB 2011

TNT TOP GUN R244

SIRE: CMS UNIQUE 853U

CMS RED ROBIN 07N

LFE MR LEWIS 348N

DAM: MISS PENSAL FIGURE 2U

MISS RED PENSAL 71K

BW 90  
205  
Day Wt.  
365  
Day Wt.

EPD  
CE -  
BW -  
WW -  
YW -  
MCE -  
MWW -  
MILK -

This is another good red Unique son that we are excited to send off. He is deep sided, clean fronted, and has a lot of rib. His mother has delivered our farm bull after bull and they have all been eye catchy. His mother is a blaze-faced cow, so there is also the potential that he will add some chrome on to his calves.



Lot  
★  
52Y

## LBCC Yellow Rain 52Y

LBCC 52Y 764613 22 FEB 2011

TNT TOP GUN R244

SIRE: CMS UNIQUE

CMS RED ROBIN 07N

PVF-CW RAPID FIRE 0195K

DAM: MARK'S MS BEEF 61S

JONESY'SMISSPREMIERBEEF4P

BW 101  
205  
Day Wt.  
365  
Day Wt.

EPD  
CE 5.6  
BW 2.9  
WW 35.5  
YW 69.1  
MCE 3.8  
MWW 20.4  
MILK 2.6

Yellow Rain is another bull calf out of our Mr. Beef cow. His full brother LBCC Beefed Up 73Z is also on offer, and Yellow Rain is a great indication of what to expect. This bull is framey, long, and has a ton of capacity.





*LBCC Mai Tia Addiet 66Z*

LBCC 66Z BPG775582 4 JAN 2012

TNT TOP GUN R244

**SIRE: CMS UNIQUE 853U**

CMS RED ROBIN 07N

TH BLACK BOOMER 10P

**DAM: MOES BLACK MAI TAI 200T**

BUTE MS PATSY 20P



BW	82
205 Day Wt.	765
365 Day Wt.	
EPD	
CE	5.9
BW	2.9
WW	39.3
YW	69.5
MCE	1.9
MWW	18.5
MILK	-1.2

Here is a cool black Unique bull calf that we are excited to have out. He has style, smooth made and will add that extra length to his calves. He is a bull that is going to make good females, which you will surely want in the replacement pen.



*LBCC Beefed Up 73Z*

LBCC 73Z 775581 13 JAN 2012

TNT TOP GUN R244

**SIRE: CMS UNIQUE 853U**

CMS RED ROBIN 07N

PVF-CW RAPID FIRE 0195K

**DAM: MARK'S MS BEEF 61S**

JONESY'SMISSPREMIERBEEF4P



BW	105
205 Day Wt.	876
365 Day Wt.	
EPD	
CE	5.6
BW	2.9
WW	35.5
YW	68.1
MCE	3.8
MWW	20.4
MILK	2.6

Beefed Up is out of a black Mr. Beef cow, which always brings a bull that surpasses our expectations and this bull is surely one of them. This bull has performed right from day one, and will be a bull that will add pounds to calves in any herd.



*LBCC Zinger 79Z*

LBCC 79Z 775229 18 JAN 2012

WESTFALL VOYAGER 721P

**SIRE: SKORS VOYAGER 25X**

SKORS BLACK DIXIE 19U

HOOKS SHEAR FORCE 38K

**DAM: BLI BLACK UNIQUE 133U**

MISS PRICKLY PEAR 133L



BW	100
205 Day Wt.	840
365 Day Wt.	
EPD	
CE	12.6
BW	-1.6
WW	24.0
YW	47.1
MCE	5.8
MWW	19.5
MILK	7.5

Zinger is another Voyager bull calf that is as correct as they come. This is a bull that is long, smooth fronted, and moves like a dream. This bull is going to be another black standout come sale day. This will be a bull that you won't be scared to let cover cows. With lines such as Shear Force, Dream On, and Power Drive in his pedigree, Zinger is definitely a bull that will impress!



*LBCC Chrome 76Z*

LBCC 76Z 775580 16 JAN 2012

TNT TOP GUN R244  
**SIRE: CMS UNIQUE 853U**  
 CMS RED ROBIN 07N  
 LFE MR LEWIS 348N  
**DAM: MISS KIE HODGIE 112U**  
 MISS RED HODGIE 93P

BW	205 Day Wt.	365 Day Wt.	EPD	CE	BW	WW	YW	MCE	MWW	MILK
92	843		6.7	1.9	34.0	61.8	3.3	16.3	-0.8	

Chrome is a powerhouse of a bull. He will add pounds to your calves and will give them a dash of color for eye appeal. He is a great cherry red color and has a hair coat that will be great on any set of calves. This bull will be a great addition to any commercial man's herd. Chrome is a Unique son that will stand out on sale day.



*LBCC Unwind It 80Z*

LBCC 80Z 775228 18 JAN 2012

TNT TOP GUN R244  
**SIRE: CMS UNIQUE 853U**  
 CMS RED ROBIN 07N  
 CNS DREAM ON L186  
**DAM: MARK'S MARIA 62S**  
 LFE MY MARIA 190L



BW	90
205 Day Wt.	760
365 Day Wt.	

EPD	7.1
CE	1.7
BW	37.3
WW	66.7
YW	2.5
MCE	20.4
MWW	1.7
MILK	

Unwind It is a structurally correct bull that is certain to wow producers on sale day. With a maternal pedigree that includes Dream On, you can expect a bull that is smooth made and will put the pounds on his babies!



*LBCC Rodney 82Z*

LBCC 82Z 775227 19 JAN 2012

TNT TOP GUN R244

SIRE: CMS UNIQUE 853U

CMS RED ROBIN 07N

LFE RED TANKER 490P

DAM: MARKS MISS TANKER 123W

MRL MISS 726R



BW	96
205 Day Wt.	730
365 Day Wt.	

EPD	7.4
CE	
BW	2.1
WW	35.4
YW	67.7
MCE	2.0
MWW	16.9
MILK	-0.9

Rodney is a very correct, smooth made bull. Unique has made another hit with this bull. Be sure to look at the muscle and depth of quarter in this bull, you will be impressed with what he has to offer. His mother and grandmother have been great producing cows in our herd, so he is surely to make some outstanding females in the future.



*LBCC Tobby 83Z*

LBCC 83Z 1/2 BLOOD 23 JAN 2011

TNT TOP GUN R244

SIRE: CMS UNIQUE 853U

CMS RED ROBIN 07N

RED BRYLOR SDL PASQUALE 213P

DAM: RED GET-A-LONG LADY ERICA 830

RED GET-A-LONG LADY ERICA 586



BW	75
205 Day Wt.	800
365 Day Wt.	

EPD	-
CE	-
BW	-
WW	-
YW	-
MCE	-
MWW	-
MILK	-

Here is our "best of both worlds" offering. This bull is out of our one purebred Angus cow that seems to bring us an eye catching hybrid bull calf year after year. The combination of the breeds is a homerun! Be sure to have a look at this bull and see for yourself.

HALF BLOOD SIMMENTAL X ANGUS



*LBCC Twisted Tea 84Z*

LBCC 84Z 775224 23 JAN 2012

WESTFALL VOYAGER 721P

SIRE: SKORS VOYAGER 25X

SKORS BLACK DIXIE 19U

SSP BIG RED 532R

DAM: YR RED CAMILLE 927W

YR RED ROSE BUD 48M



BW	92
205 Day Wt.	810
365 Day Wt.	

EPD	6.1
CE	
BW	2.9
WW	39.3
YW	68.7
MCE	5.5
MWW	26.9
MILK	7.2

Here is our only red offering out of Voyager, and boy is he impressive! Like all of the calves that Voyager has left us he is big hipped, smooth fronted, and has a hair coat that stands out. He has a ton of length to him and certainly would make a great addition to any herd. With bloodlines going back to Joker and Ribeye - calves are sure to be a hit in any herd.



Lot  
★  
88Z

*LBCC Crazy Train 88Z*

LBCC 88Z 775223 278 JAN 2012

TNT TOP GUN R244  
**SIRE: CMS UNIQUE 853U**  
 CMS RED ROBIN 07N  
 NLC GOOD A NUFF 33G  
**DAM: MRL MISS 726R**  
 MRL MISS 476N

BW	205 Day	365 Day Wt.	EPD	CE	BW	WW	YW	MCE	MWW	MILK
104	822			6.6	2.0	34.5	67.6	2.5	16.2	-1.1

This is one bull that we have been excited about since he was young. Train is a bull that when you put him out in a pasture he will cover cows. The best part is; you can expect his stylish look, length, and pounds to be added to his calves. This is an impressive Unique son that you can't let pass by without having a look at him in the pen.

Lot  
★  
90Z

*LBCC Red Man 90Z*

LBCC 90Z 775226 3 FEB 2012

TNT TOP GUN R244  
**SIRE: CMS UNIQUE 853U**  
 CMS RED ROBIN 07N  
 LFE RED TANKER 490P  
**DAM: MARKS MISS BLACK DOLL 90T**  
 MARK'S MISS 1N



BW	96
205 Day Wt.	782
365 Day Wt.	
EPD	
CE	5.5
BW	1.8
WW	27.6
YW	52.9
MCE	1.0
MWW	12.0
MILK	-1.9

Red Man is a bull that is going to go out and add pounds to any set of calves. Unique has added the muscle and meat to make this bull, along with Red Tanker and Joker in his background, he is sure to make females that will produce for years to come, and bulls that will be a desire for anyone.





*LBCC Chicks Dig It 92Z*

LBCC 92Z 775579 5 FEB 2012

TNT TOP GUN R244

**SIRE: CMS UNIQUE 853U**

CMS RED ROBIN 07N

LFE MR LEWIS 348N

**DAM: MISS KIE SUZETT 117U**

MISS POUND SUZETT 63P



BW	90
205 Day Wt.	788
365 Day Wt.	

EPD	
CE	6.5
BW	2.0
WW	35.4
YW	63.7
MCE	3.5
MWW	18.0
MILK	0.3

Here is a Unique son that is sure to impress. This bull has a ton of length and he sure is a head turner. His mother is a strong powerful cow that produces great bulls year after year.



*LBCC Sharp Dressed Man 99Z*

LBCC 99Z 775225 23 FEB 2012

TNT TOP GUN R244

**SIRE: CMS UNIQUE 853U**

CMS RED ROBIN 07N

LFE HIGH VOLTAGE 822L

**DAM: MMP ROCK STEADY 41R**

MMP TRICK PONY 41M

BW	205 Day Wt.	365 Day Wt.	EPD	CE	BW	WW	YW	MCE	MWW	MILK
96	801		5.6	31	42.7	77.7	2.5	19.7	-1.7	

Here has been a head turner right from when he was out on pasture with his mom. Not only does his blaze face make him appealing, he is the right make any way you look at him. This bull has more quarter and more hip in him then any other bull on offer. The mother of this bull has been raising bulls that rise to the top of the pen year after year. This is one bull you need to stop and look at on sale day.

# Thank You to the following businesses for sponsoring the Spring Barn Dance



**Dr. Tanya Knittig**  
**Dr. Chris Bowyer**  
**Dr. Cerah Bowyer**  
**Dr. Kelli Kinsman**

**BARR-NORTH**  
VETERINARY SERVICES LTD.

**780-674-2100**  
24 Hours Emergency Service

Box 4279 4810-62 Ave, Barrhead, AB, T7N 1A3



**BYRON & GWEN BRANDL & Family**

Performance Tested  
Purebred Black & Red Angus

Phone or Fax:  
**(780) 954-2599**  
E-mail: brandl@mcsnet.ca  
www.brandlcattleco.com

Box 128, Jarvie, AB T0G 1H0

**Muscle, Performance, Maternal Power**



**KEN LYNES**  
Farm Supply  
Supervisor & Sales

**CHAMPION**  
Feed Services Ltd.

9415 - 109 Street  
Westlock, Alberta  
T7P 2M6

Tel: (780) 349-5686  
1-800-661-3924

Fax: (780) 349-3023  
Email: kenl@championfeeds.com

**Chapotelle Bros.  
Contracting**

Gary Chapotelle  
Box 44  
Jarvie AB T0G 1H0  
Phone/Fax: (780) 954-2374

Corral Cleaning  
Cat Work  
Gravel Trucks  
Backhoe Work



**CHUCK'S  
DITCHING LTD.**

BACKHOE WORK

BOX 36  
JARVIE, AB.  
PH. (780) 954-3787

Calvin & Colleen



**servus**  
credit union

**Jason McElroy, B. Comm, FCUIC**  
Branch Manager

Barrhead  
4929 50 Avenue, P.O. Box 4538 t: 780.674.3348 ext 1331  
Barrhead, AB T7N 1A4 f: 780.674.6287  
jason.mcelroy@servus.ca servus.ca



**Farm Credit Canada**  
Financement agricole Canada

Rhonda Schmidt  
Relationship Manager  
Directrice des relations d'affaires

5019 50<sup>th</sup> Street, P.O. Box 4680  
5019 50<sup>th</sup> Street, C.P. 4680  
Barrhead AB T7N 1A5

780-674-8790  
780-674-3610  
780-305-4270

1-888-674-4744  
1-888-332-3301  
(Ex. hours/ heures prolongées)

rhonda.schmidt@fcc-fac.ca www.fcc-fac.ca

Canada



*Working for the Farmer!*

**SUPERIOR  
BALE  
FEEDERS.CA**

Fred DeBock Ph. (780) 785 - 2849



**SPIKER**  
VETERINARY SERVICES

24 Hour Mobile Vet Services

Deanna Spiker, D.V.M.  
Ph. 780-206-5772  
E-mail: ddspiker@telusplanet.net  
Box 150, Jarvie, AB T0G 1H0



**T-Down TRAILERS**

SALES & LEASING Brooks, Alberta

EBY • MUSTANG • OASIS • REESE HITCHES

Ross W. Annett

Office (403) 362-5252 Fax (403) 362-5254  
Cellular (403) 793-4715 E-mail: ross@tdown.ca

www.tdown.ca


ALUMINUM • STEEL  
HORSE & STOCK • FLAT BEDS • CARGO • INDUSTRIAL/RECREATIONAL

**Westlock  
Veterinary  
Center**

10004 - 94 A Avenue  
Westlock, Alberta T7P 2M9  
Ph: 780-349-3663  
(24 Hrs. Emergency)  
Fax: 780-349-4323  
www.westlockvetcenter.ca

Office Hours:  
Mon. - Fri. 8:30 - 5:30 Sat. 8:30 - 4:00

- Dr. Tannis Jackson
- Dr. Trevor Jackson
- Dr. Collin Lawrence
- Dr. Jim Lawrence
- Dr. Robert Lawrence
- Dr. Roy Lewis
- Dr. Reagan Shalapay



**JARVIE GENERAL STORE**



Groceries  
Liquor  
Country Cafe

Propane  
Gas/Diesel  
Giftware

**780-954-2493**  
Main Street, Jarvie AB



**Feed that works as hard as you do!**



**TRIPLE GOLD 13% BULL PELLETT**

- Formulated to target controlled growth and promote conditioning of mature cattle
- Maintains condition of mature bulls
- Promotes moderate growth in replacement and bred heifers

**TRIPLE GOLD 13% SHOW BULL PELLETT**

- Formulated for cattle destined for shows and sales
- Higher in oil content to increase conditioning and hair shine
- Feed at least 6-8 weeks prior to sale day



**TRIPLE GOLD 13% TD SHOW BULL PELLETT**

- Raise the next Grand Champion using the 'Touch-Down' Show Pellet
- Highest oil content in the Triple Gold product line for maximum conditioning and shine

Sherwood Park, AB Ponoka, AB  
1.800.663.0497 1.877.783.6020

Olds, AB Lethbridge, AB  
1.877.864.6537 1.800.720.7950



Kandee & Damond  
Stadnyk/Archie  
Gale Farms  
- High Selling Bull -



- Volume Buyer – Sale Day -  
Ben & Hendria Hospers

## Thank You to Our 2012 Bull Buyers

Jay & Robin Booth  
Mitchell Benson  
Allan & Vicki Dzivinski  
Merrick Campbell  
Clyde McCoy (7)  
Dean & Linda McCoy  
Keith & Colette Conquergood  
Bob & Rose Brandl  
Dave & Myrna van de Ligt (2)  
Jennifer Varemy  
Dwayne Granger  
Brian Willett  
Raymond Zilinski  
Archie Gale Farms  
Keith & Lindi Wiart  
Calvin & Colleen Chapotelle  
Micheal Kamelchuk (2)  
Doug & Cindy Kreutzer  
Ben & Hendria Hospers (5)  
Colby & Laurie Hansen

Robert & Connie Amundson  
Brad & Christine Tymkow  
Paul & Lorraine Boulерice  
BN Ranch  
Edward & Sophie Letkie  
Frank Homa  
Doris & Leonard Stewart (2)  
Donald van de Ligt  
Fred & Rita van de Ligt (2)  
Milton Lorenson  
Ron Seifridt  
Larry Moore



- Volume Buyer -  
- Sale and Privately -Clyde McCoy

### Terms & Conditions

**CATTLE INSPECTION:** All carry tags corresponding to the sale lot numbers. All bulls will be available for viewing prior to the sale.

**BREEDING GUARANTEE:** All bulls are sound and right and sell with a responsible breeder guarantee of satisfaction. In the event of any unlikely dispute, the regular terms and conditions, standard with the Canadian Angus Association/ Canadian Simmental Association shall apply. All complaints must be reported in writing by the buyer to the seller within 6 months and any animal returned must be free of disease and in good health.

**TERMS OF SALE:** 50% cash or cheque payable to Brandl Cattle Co. or Lake Bottom Cattle Co. on sale day and a post dated cheque for the remaining 50% dated April 1, 2013 or pay the full amount at time of sale. No release will be given until satisfactory settlement has been made.

**VOLUME DISCOUNT:** 3 bulls 3%, 4 bulls 4%, 5 or more bulls 5% on total Purchases.

**INSURANCE:** Ownership risk to purchaser commences immediately. Livestock insurance will be available sale day.

**LIABILITY:** All persons attending this function do so at their own risk, and the owners and sale staff assume no liability, legal or otherwise, for property loss or for any accidents that may occur.

**ANNOUNCEMENTS:** Errors discovered in this catalogue will be corrected by announcements at the time of the sale and such corrections will take place over all printed material.

**DELIVERY:** Three options for Delivery **OPTION 1:** Buyer takes immediate possession and transports own bulls within 3 days of sale and receives a \$50/bull rebate on the purchase price. **OPTION 2:** BCC / LBCC will deliver bulls free of charge at our convenience with in 500 KM of Jarvie, further will be at cost. **OPTION 3:** Yearling bulls can be left at BCC / LBCC at the buyers risk at a charge of \$3.00/day until buyer wishes to transport own bulls. Insurance recommended.

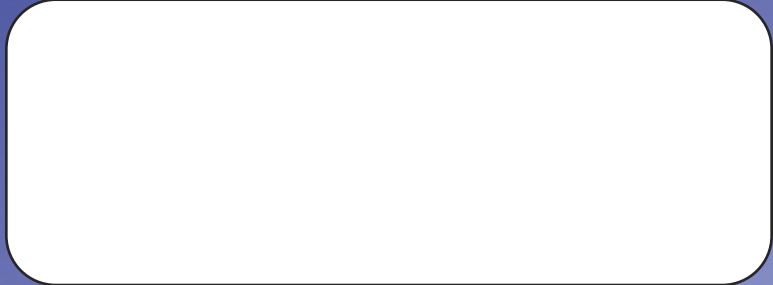
- All bulls will have passed a semen test prior to delivery.  
Deanna Spiker, DVM - Jarvie, AB prior to delivery.
- Sound cattle with good feet, legs and fertility. Cattle bred for reality, not purebred fads.
- All Brandl Cattle Co bulls have received 2 shots of hoofrot vaccine, this is to help keep the bulls working for you our customers
- Quality before quantity - No steers with nuts. All of our \$1800 bulls are steers!
- Uniformity - starting with a predictable cowherd, our bulls are bred similarly.  
Many ½ and ¾ brothers.
- We plan on staying in the business for a long time. Satisfied customers will keep it that way.



Brandl Cattle Co.  
Box 128  
Jarvie, AB  
T0G 1H0



Time Sensitive Material



# Stoke The Fire!!!

*In Your Angus &  
Simmental Pastures*

